



Advanced
Construction
Information
Development Ltd.

Residential Project

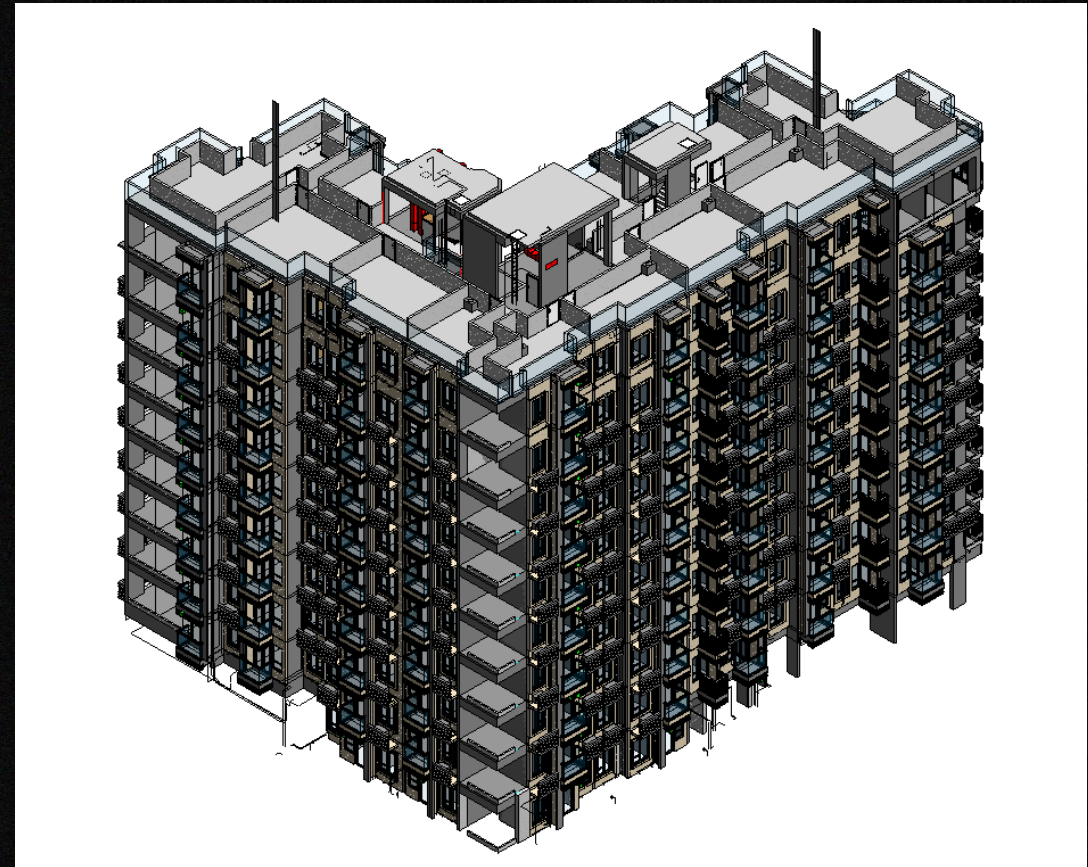
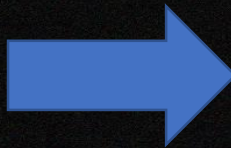
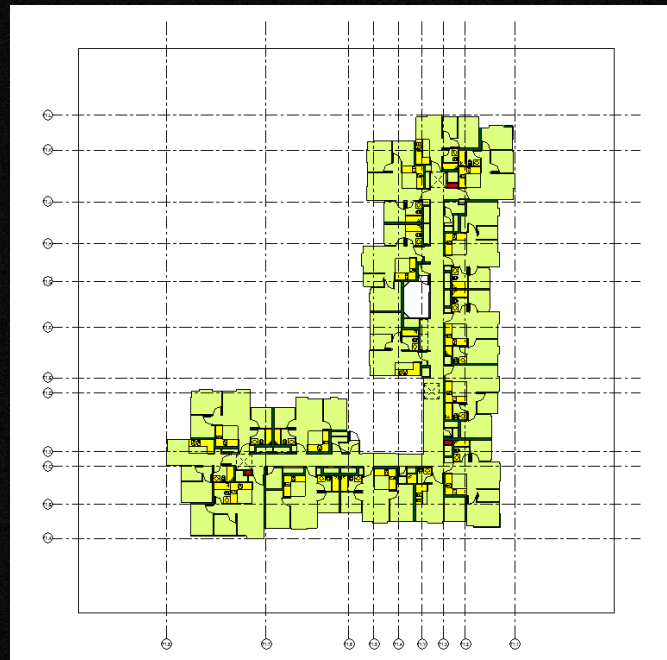
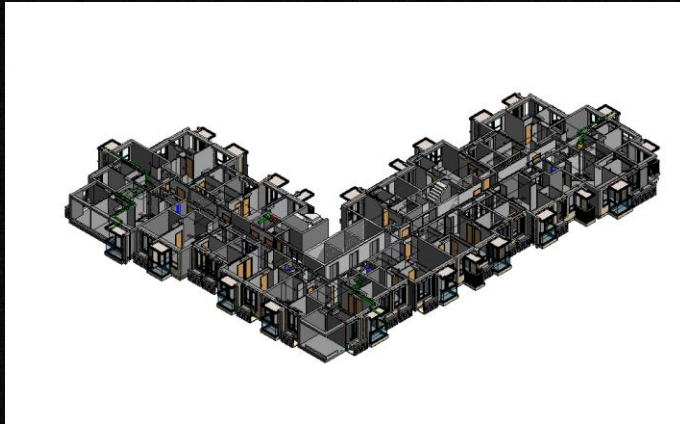
Model Division, Window, Door and Precast Schedule

Rendering



Model Division

Link the typical floor file in to ALL File and duplicate the typical floor in the ALL file.(Don't use array function as room cannot be array.)

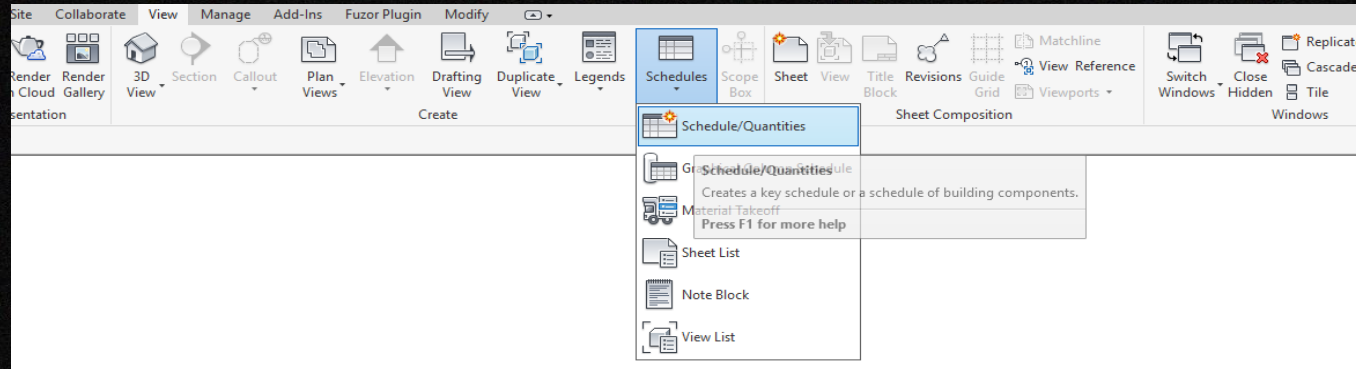


Window Schedule

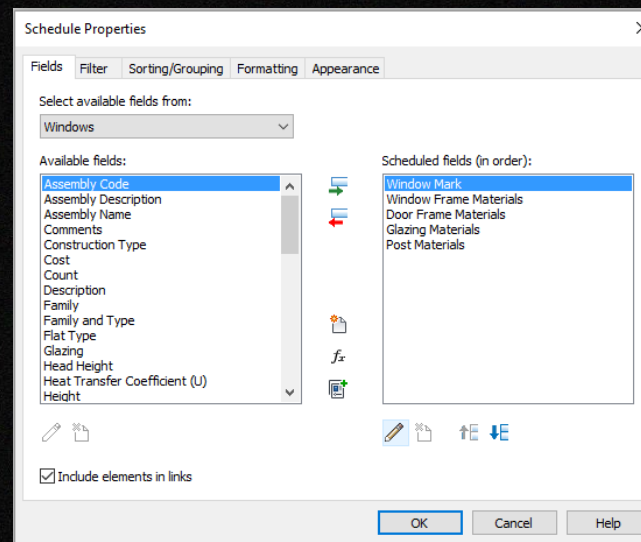
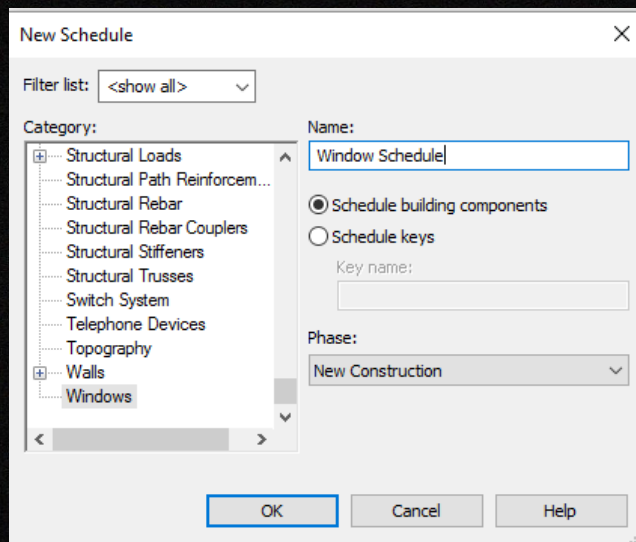


Create Window Schedule

- Select “Schedule/Quantities” to create a window schedule.

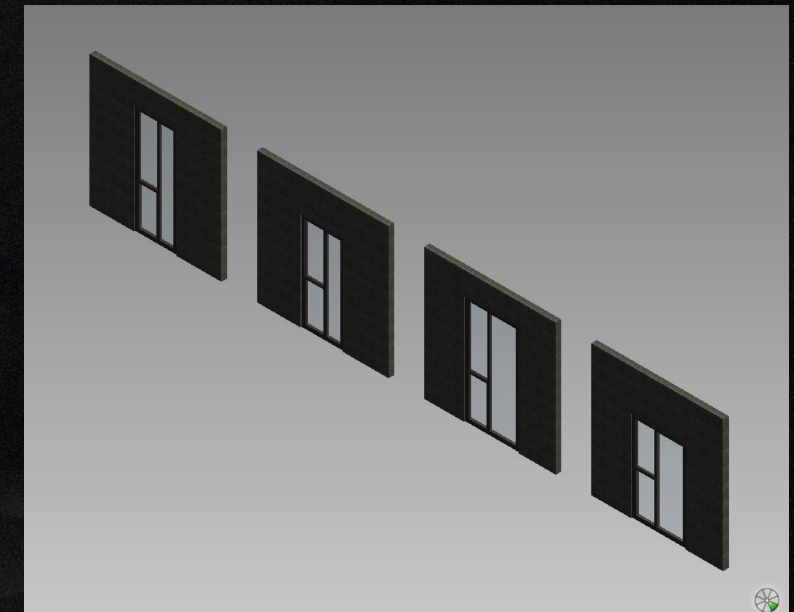
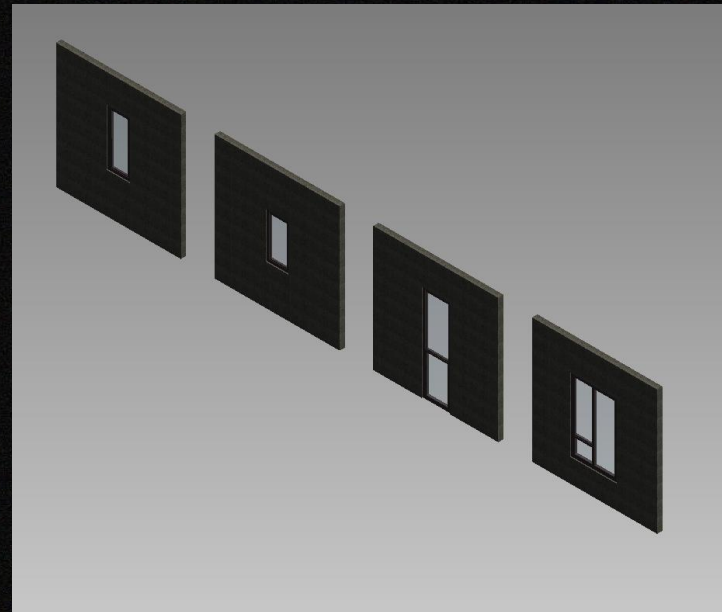
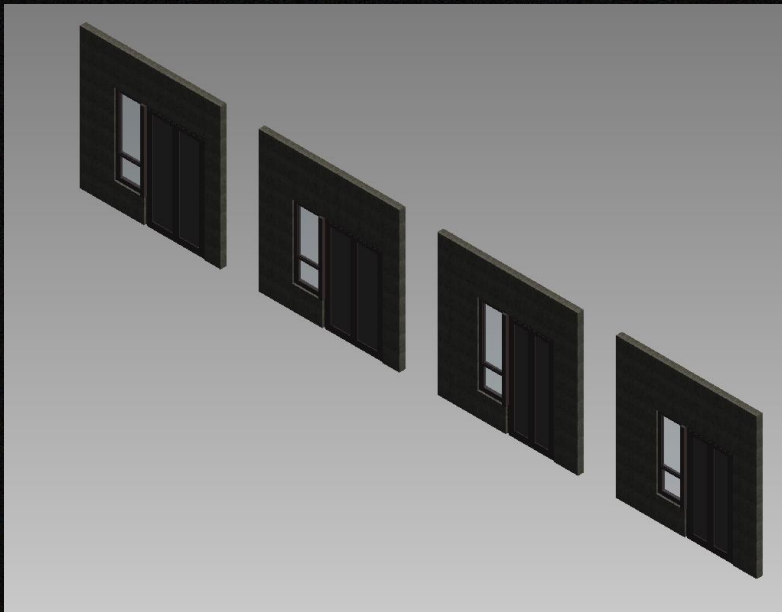


- Select Window Schedule and add field for Type, Window Mark, Window Frame Materials, Level, Room Name, Door Frame Materials, Glazing Materials



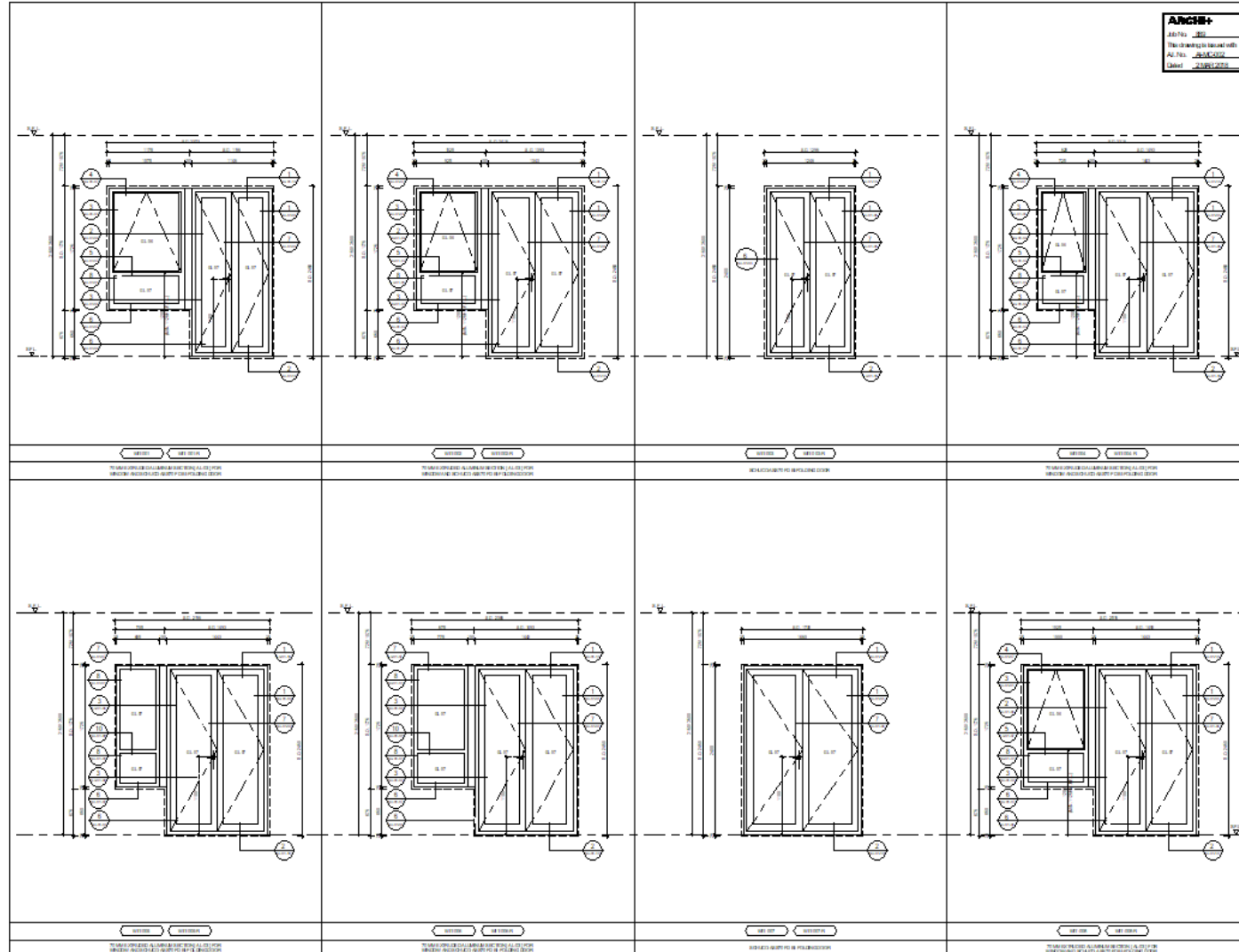
Window Schedule - Window Jamb Detail

- Place all Windows Type in a new Revit Project.
- Different dimension of same type window should be considered as another type mark.
- Type mark is for type, window mark is for instance.



Create Window Schedule

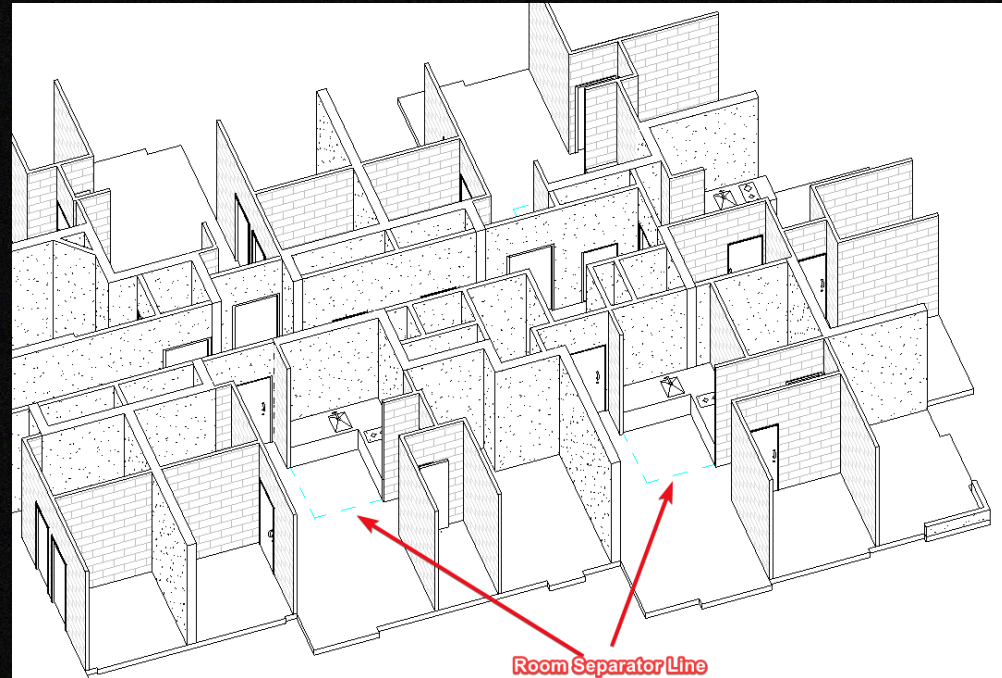
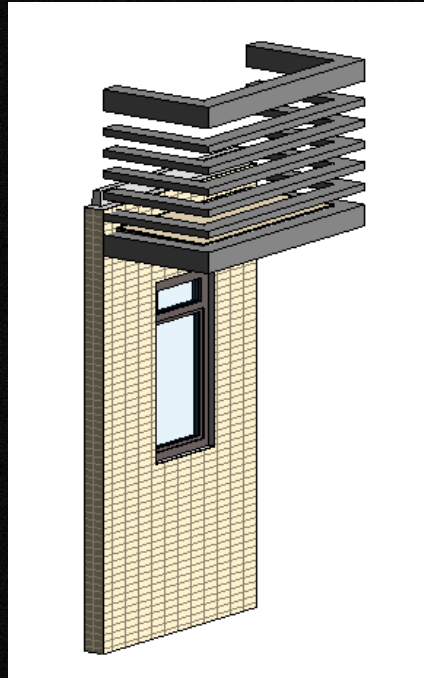
- Window Mark, Type Mark and Material should be shown in the schedule.



Precast Façade Schedule



Precast Façade Schedule

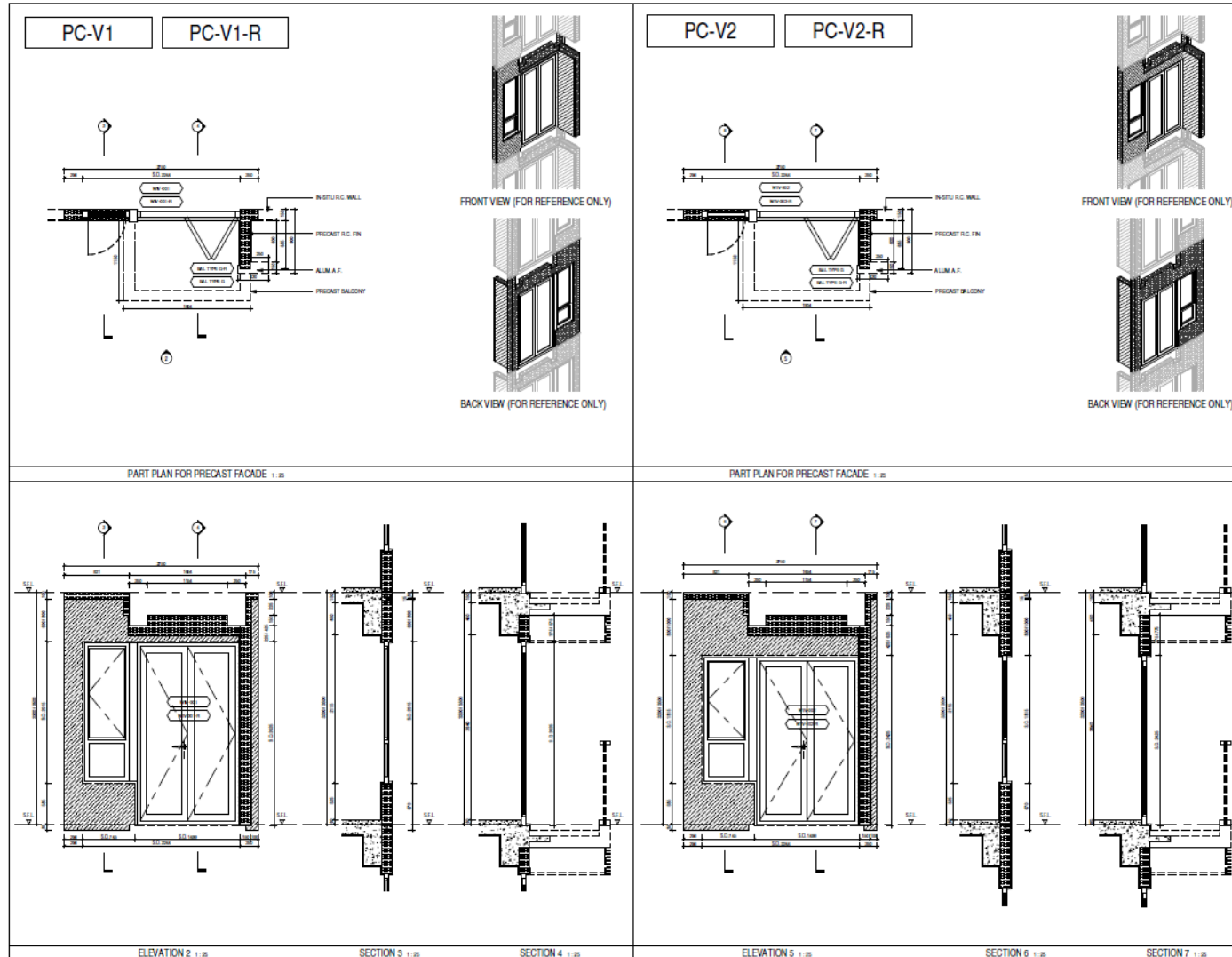


- Use **Generic Model Family** to do the Precast Façade. **Room Calculation Point** is used to define the location of Family

- Room with Precast Façade are lack of a wall. **Room separator** should be used to define the room name. Generic Model Schedule shows the room name and number.

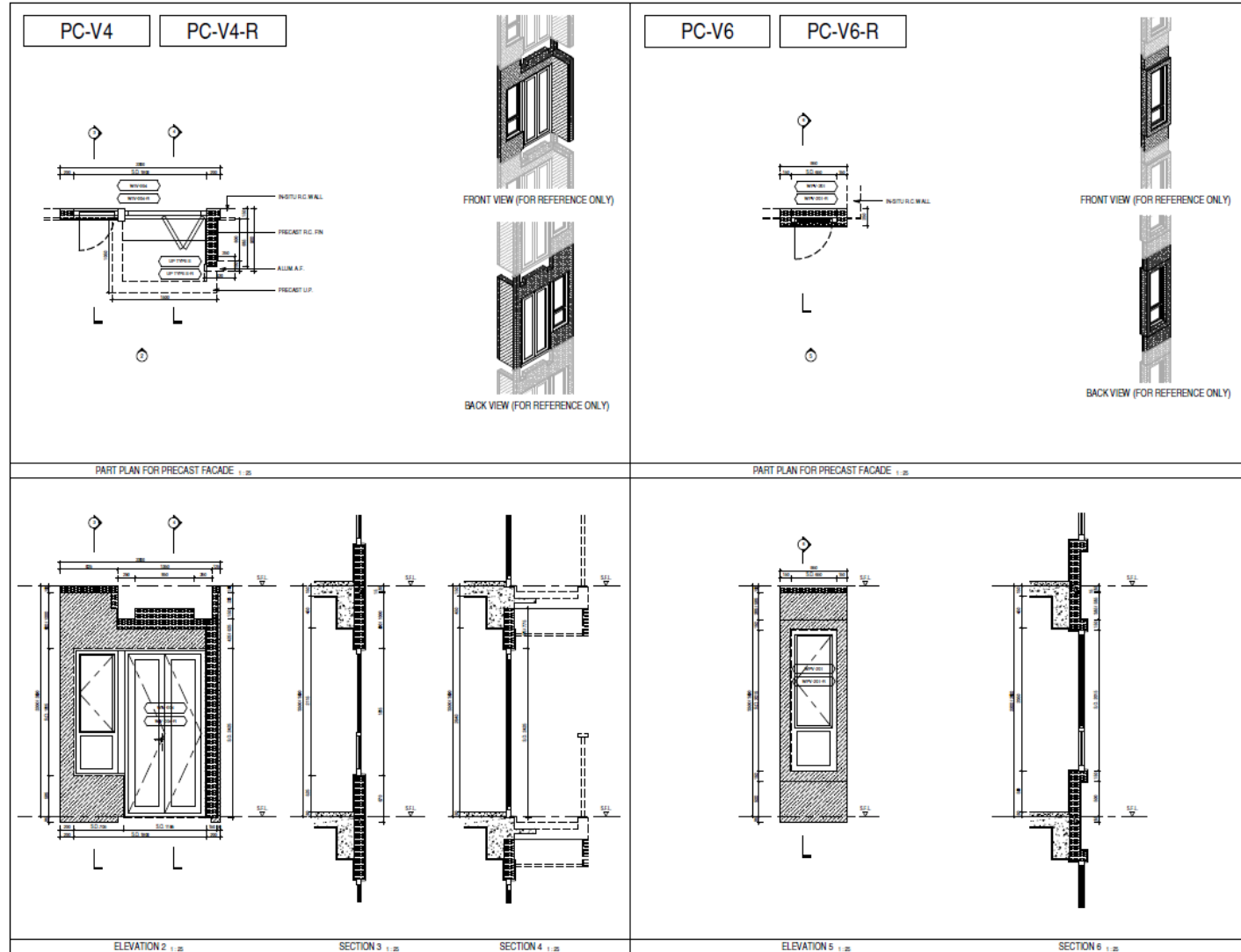
- For Precast Façade Schedule, set a parameter "Precast Façade" for wall category. Tick the parameter for the longest wall of precast facade. Filter the precast façade in different color.
- In the sheet file, use the setting by link view from the model file, so that the pattern can be shown in the sheet file.

Part Plan , Section, Elevation and 3D view should be shown in the Precast Façade Schedule.





Precast Façade Schedule Example


Part Plan , Section, Elevation and 3D view should be shown in the Precast Façade Schedule.






 hongkong@a-c-i-d.com

 +852 3468 5250

 +852 3585 5599

 **A.C.I.D. – HK**
hkacid.com

 **A.C.I.D. – China**
www.a-c-i-d.com

 **BIM Studio**
香港荃灣海盛路 3 號 TML 廣場 35 樓 A2
A2, 35/F, TML Tower,
3 Hoi Shing Road, Tsuen Wan, Hong Kong

THANK YOU !

