

BIM in Construction Productivity

David Fung

HKIA Registered Architect

HKIBIM Vice-Chairman

HKUSPACE, Lecturer

B

= Building

建築

I

= Information

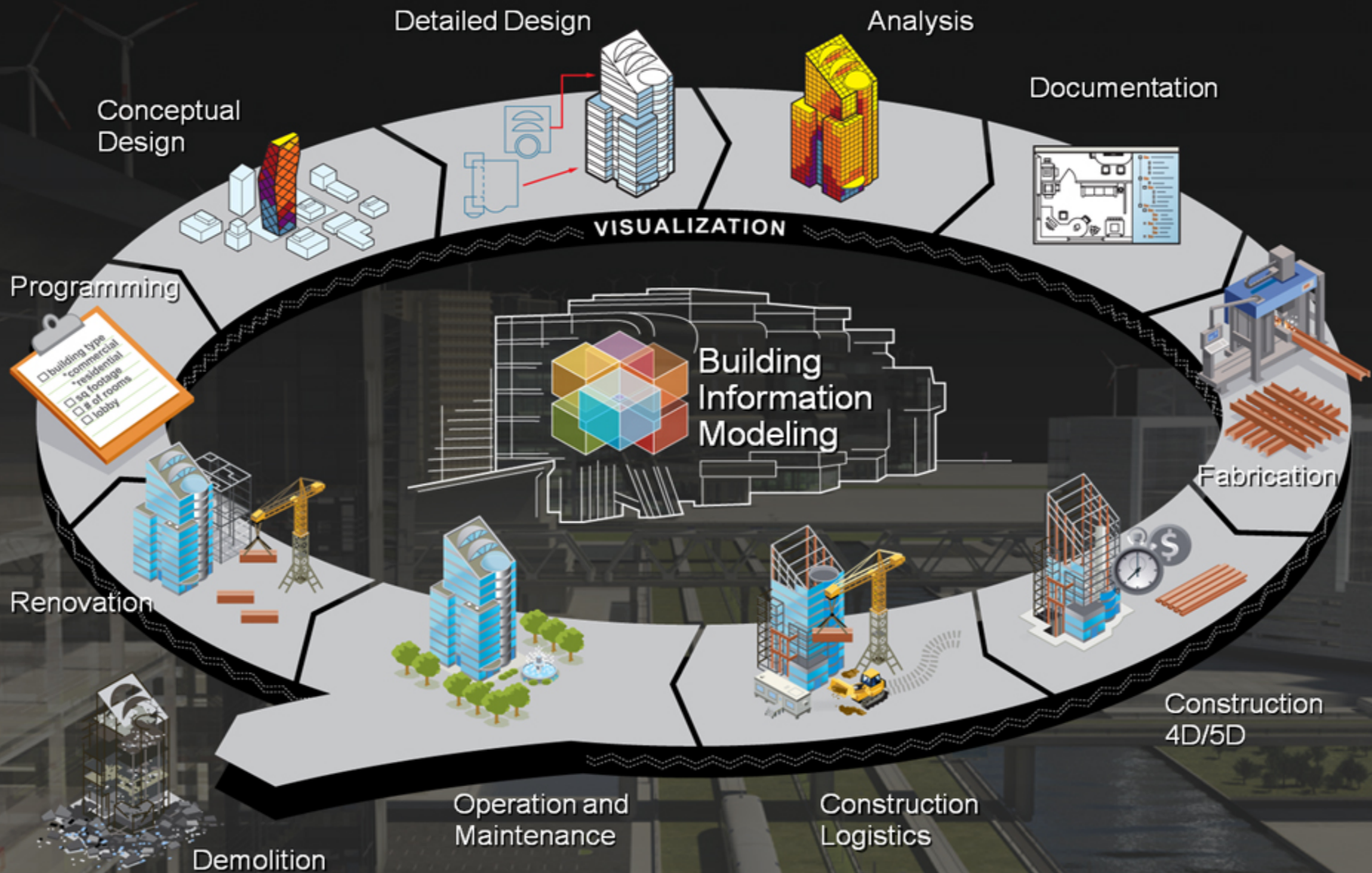
資訊

M

= Modelling

模型/ 模擬

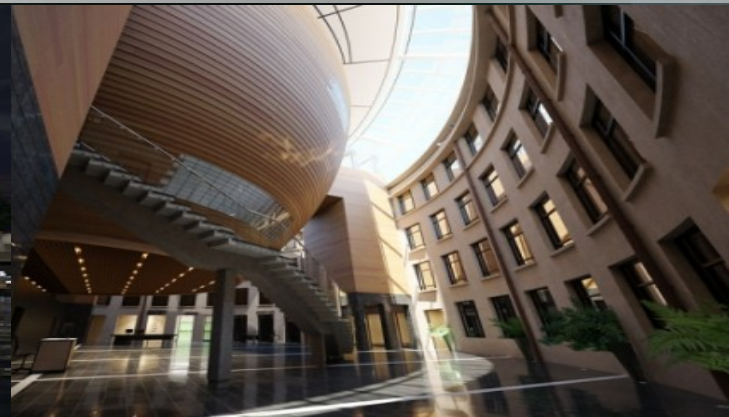
Use of Building Information Modeling (BIM)



Fake BIM

M + ?

JUST 3D MODEL – NOT BIM



Fake BIM



Fake BIM

- Rendering
- CG (Computer Graphic)
- Animations
- Interactive Gaming

**Use BIM tools not
necessarily means
BIM!**

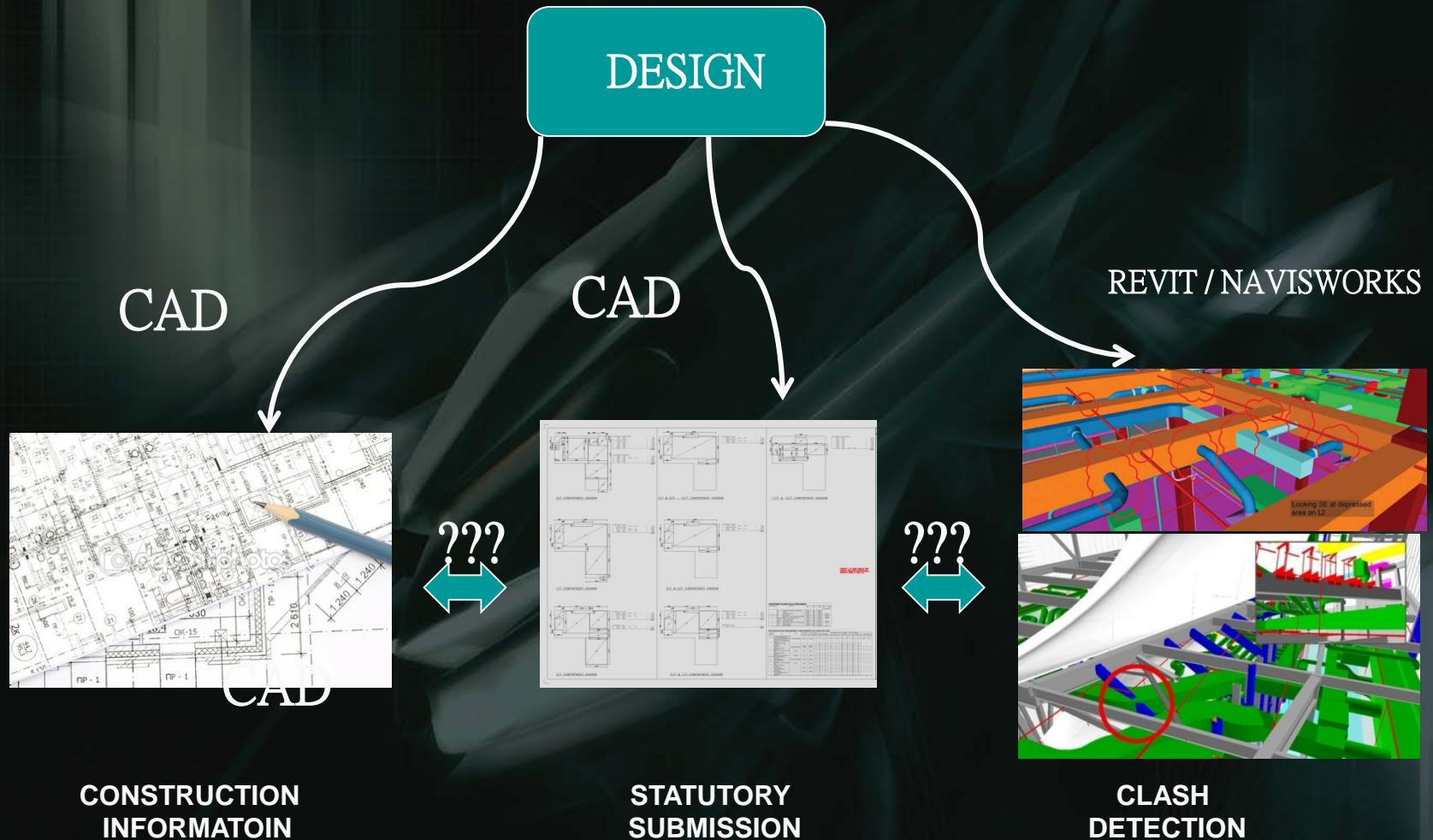


HALF-BIM

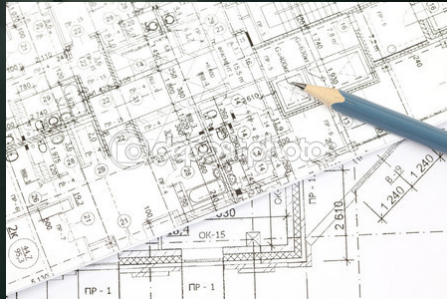
I <> M

3D MODEL >> QTO , CLASH ANALYSIS

HALF BIM

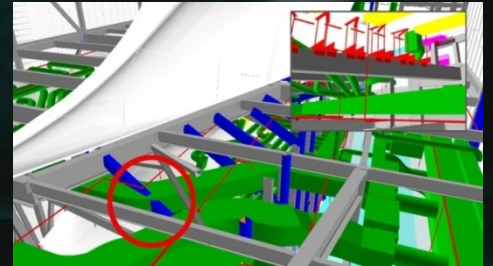
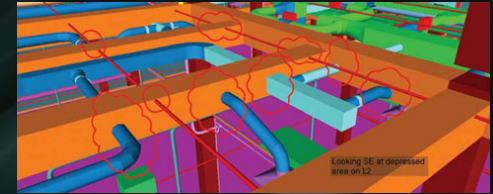


REAL BIM

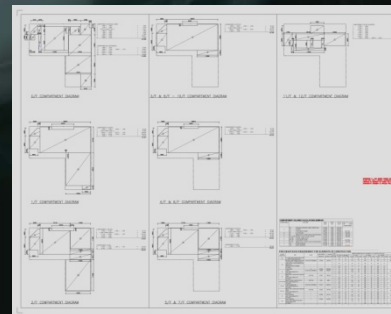


CONSTRUCTION
INFORMATOIN

DESIGN
in
BIM



CLASH
DETECTION



STATUTORY
SUBMISSION

REAL BIM

I = M

I > M

INFORMATION FROM MODEL,
INFORMATION MORE IMPORTANT

B I M

=



Modelling

Information

Business

REAL BIM

$$M + I = B$$

BIM is a process, Business is the objective