



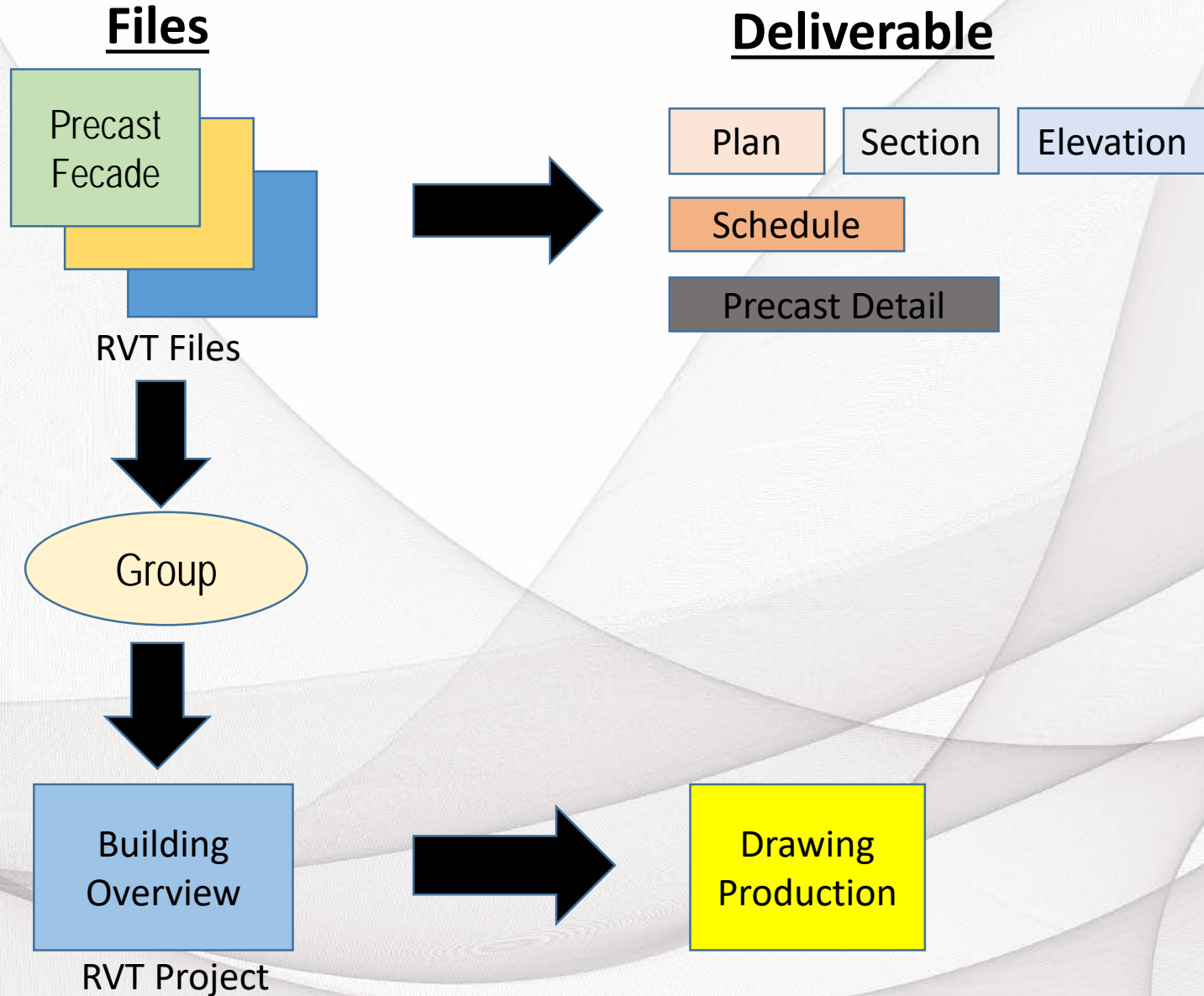
NCIC

A DVANCED
C ONSTRUCTION
I NFORMATION
D EVELOPMENT



| Precast Facade System

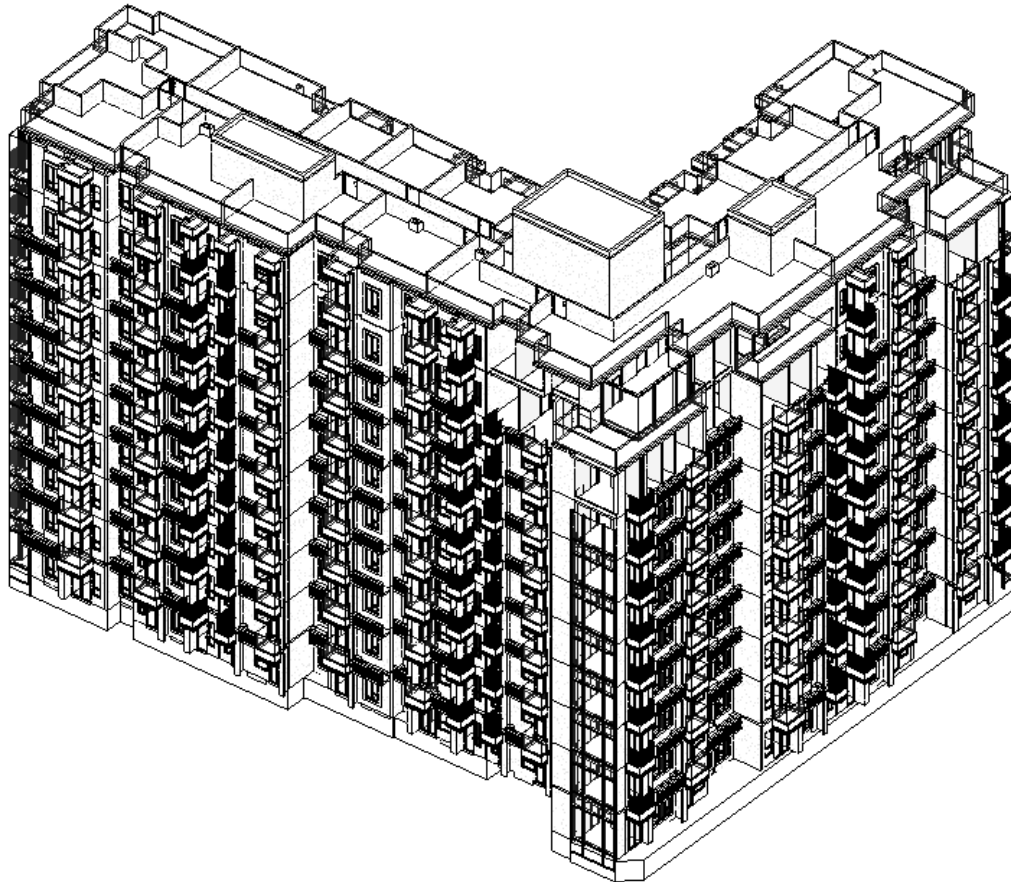
Overall Workflow of Precast Facade System



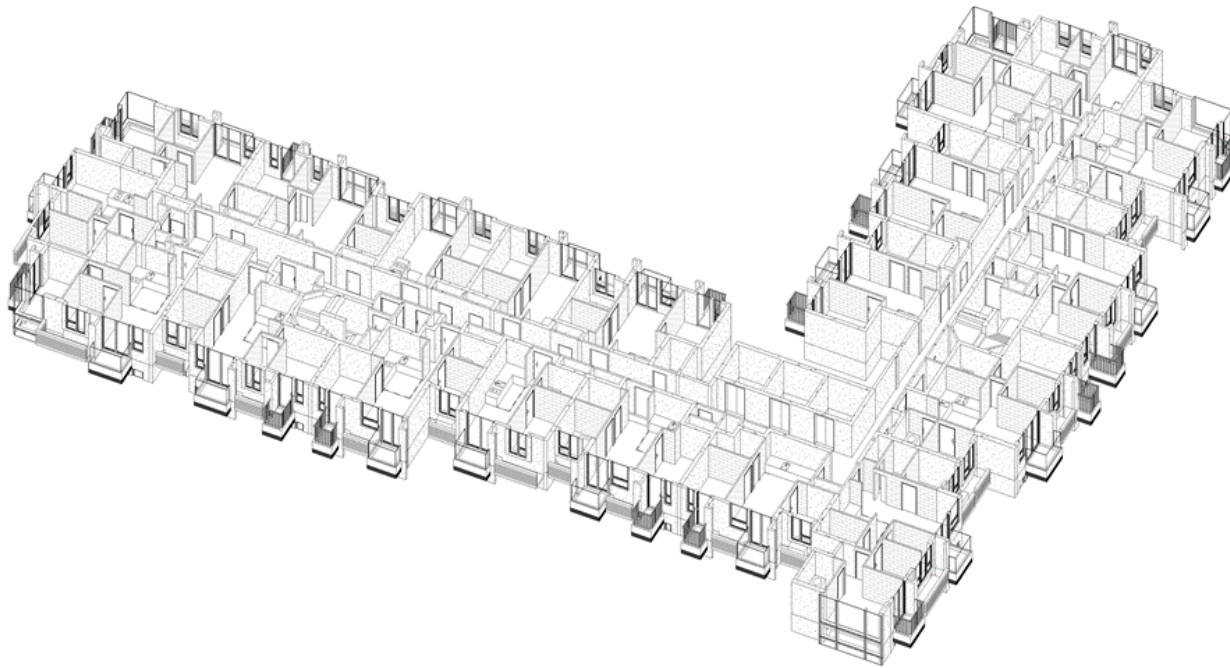


| From Panel to Tower

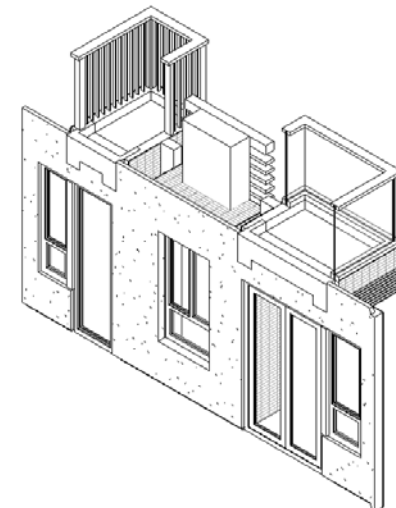
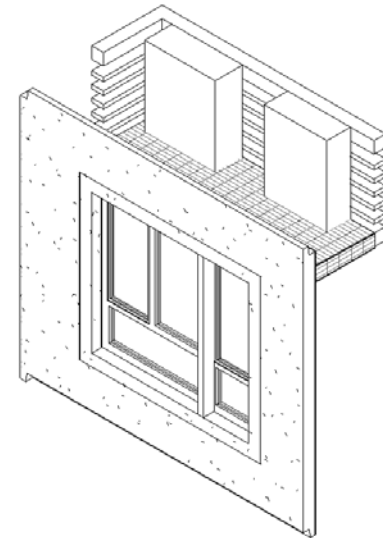
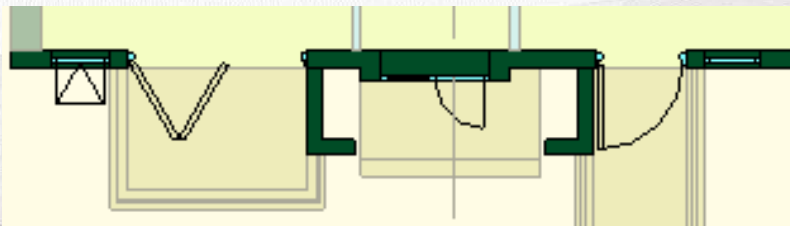
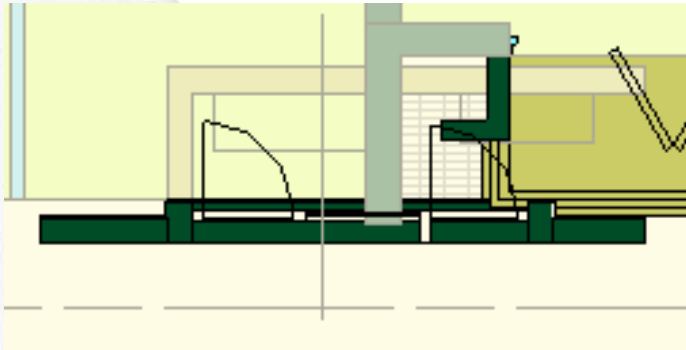
- **Build the building core in separate file and link the panel file in.**



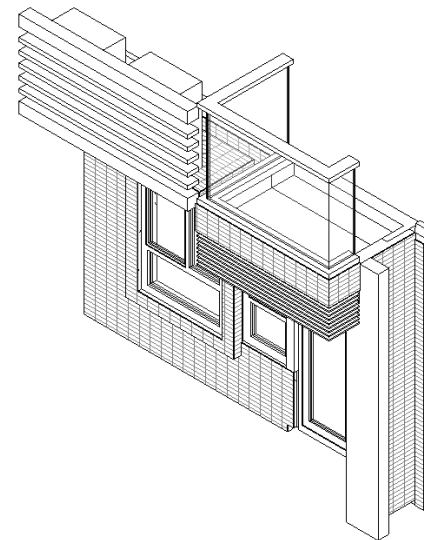
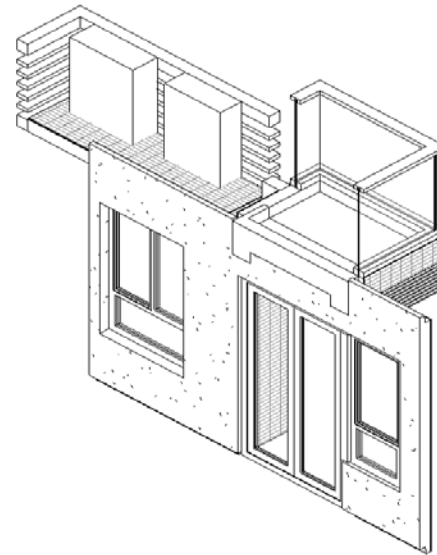
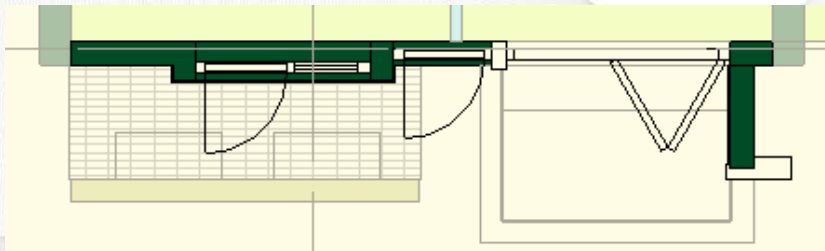
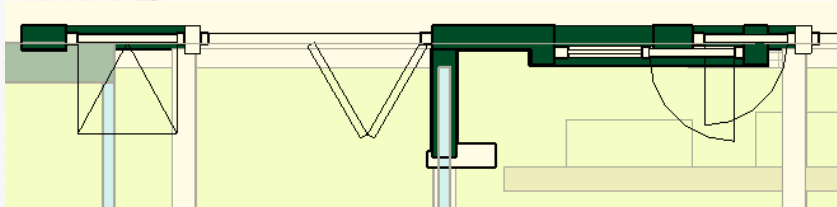
- **3D view for one of the floor**



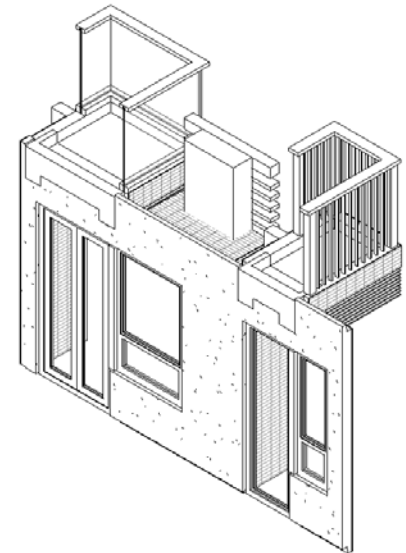
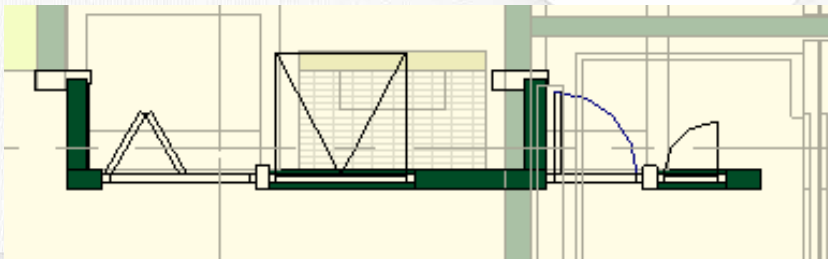
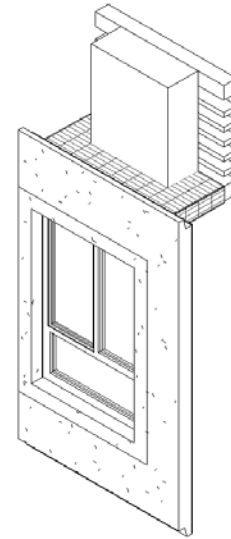
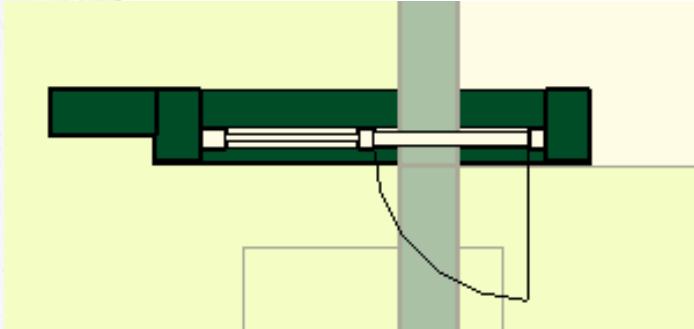
▪ Precast Facade Panel



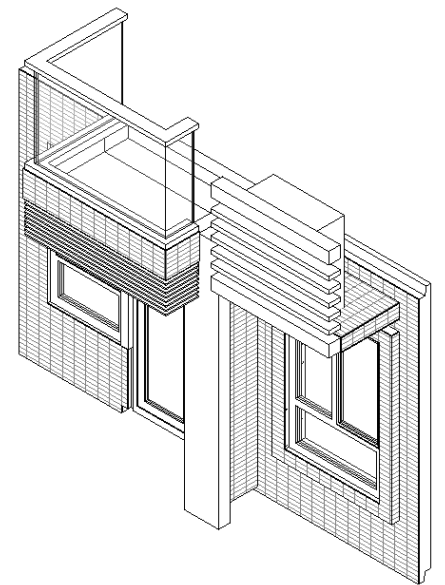
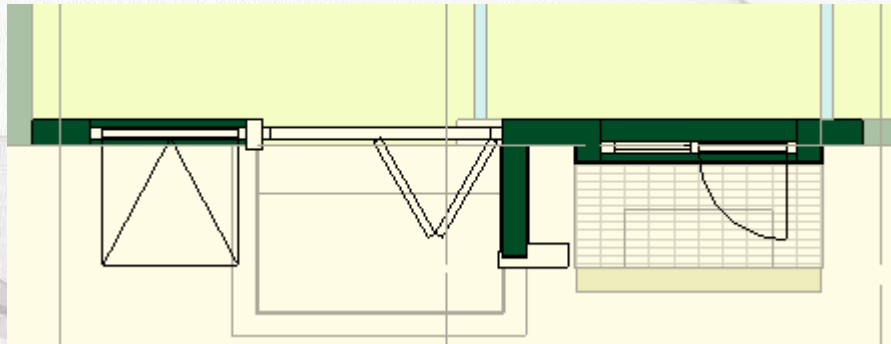
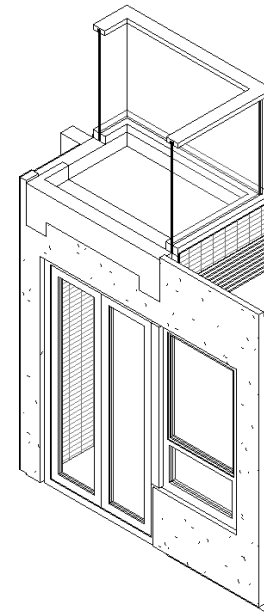
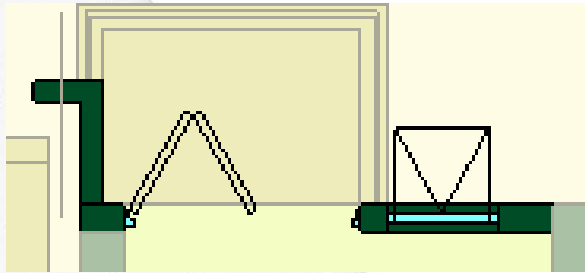
▪ Precast Facade Panel



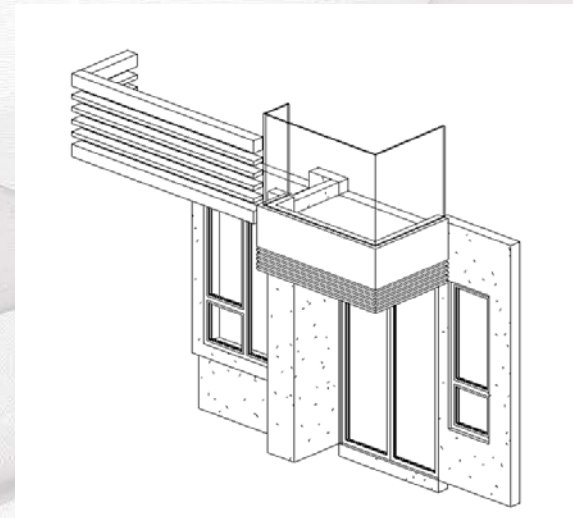
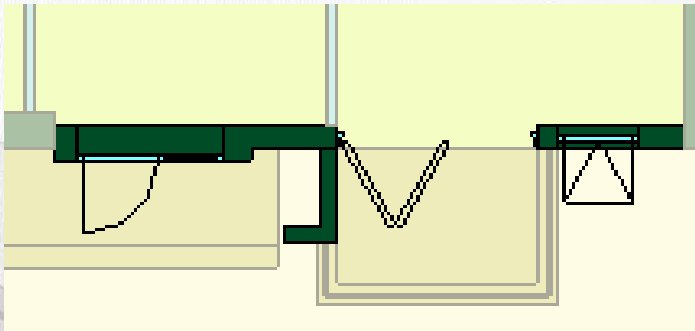
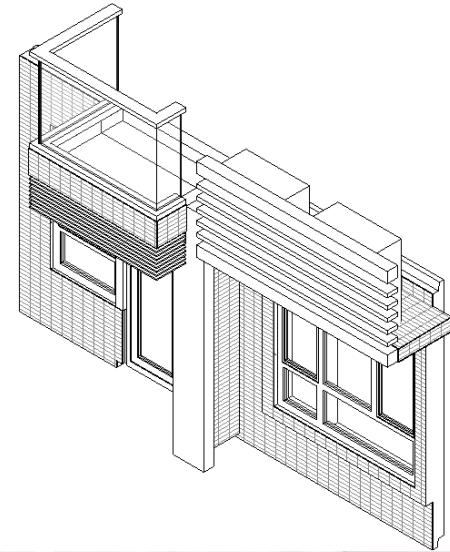
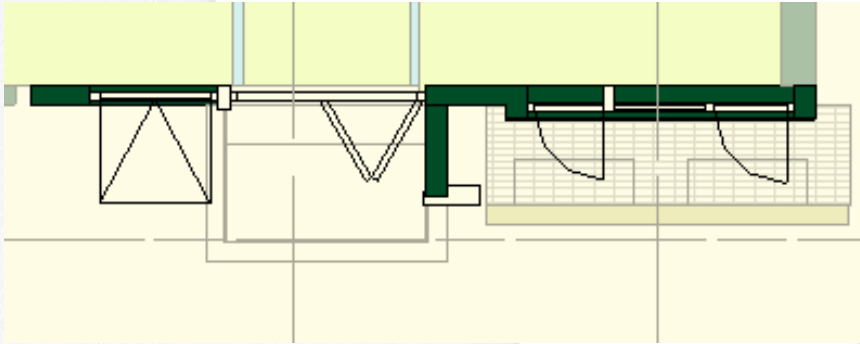
▪ Precast Facade Panel



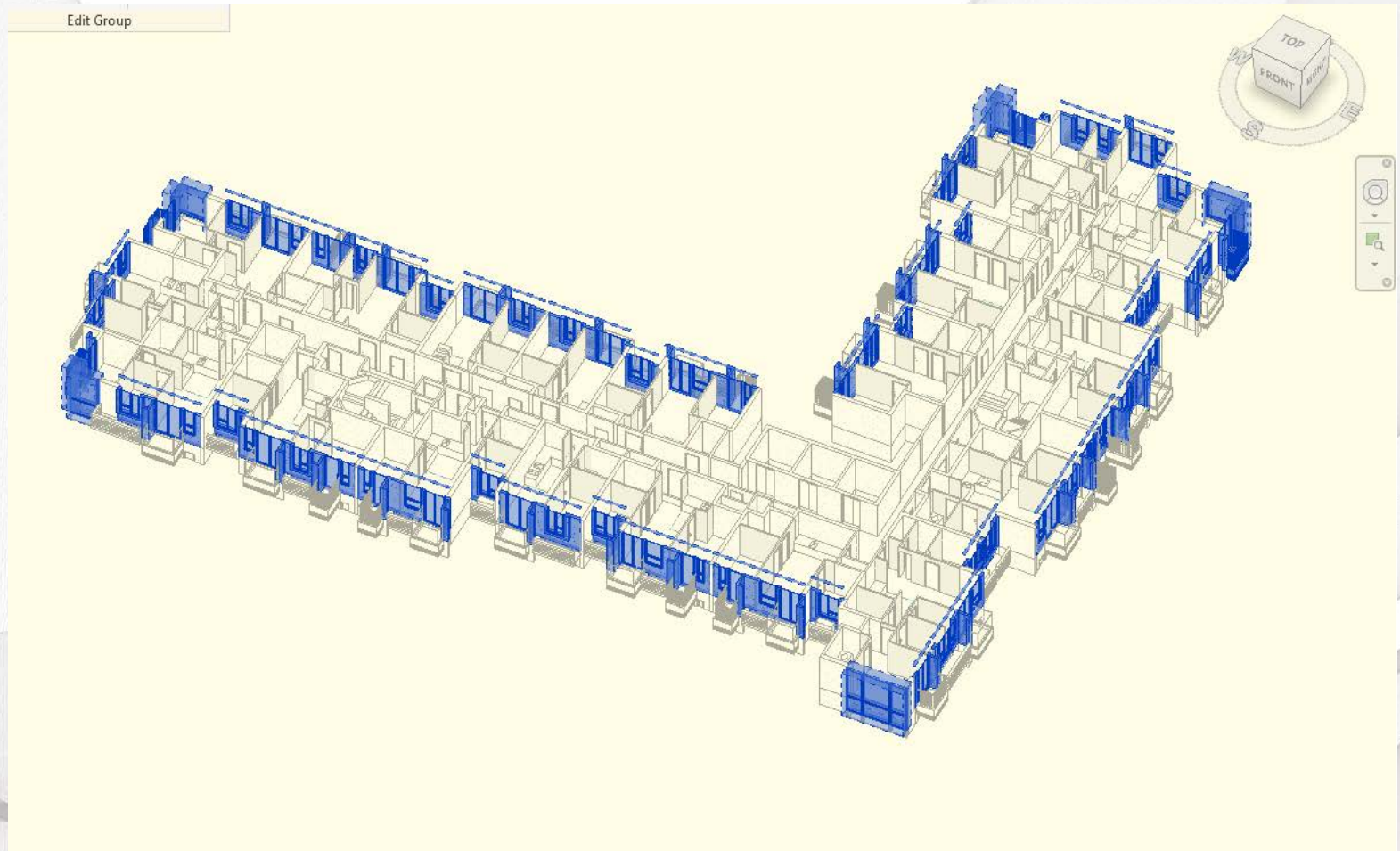
▪ Precast Facade Panel

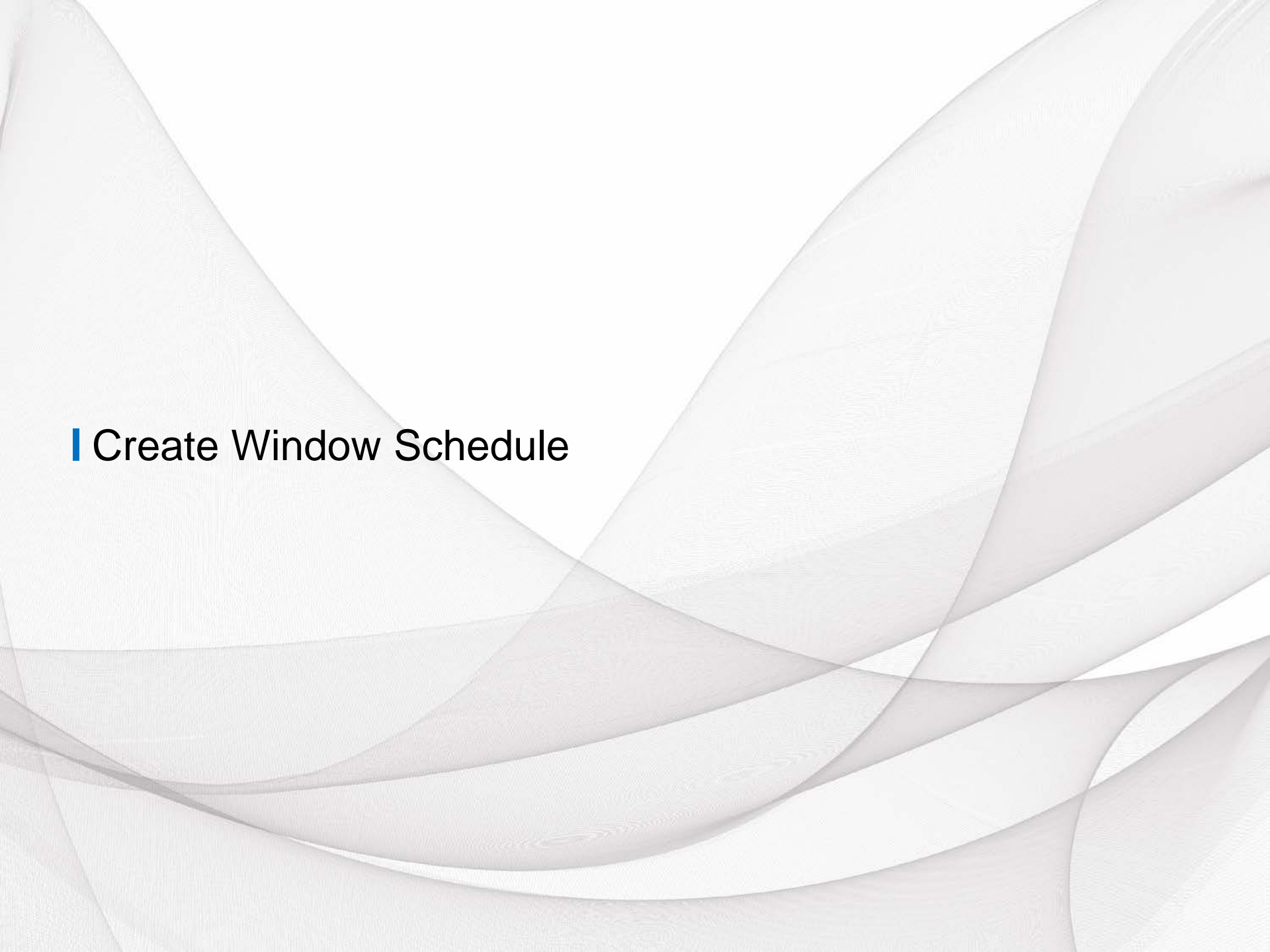


▪ Precast Facade Panel



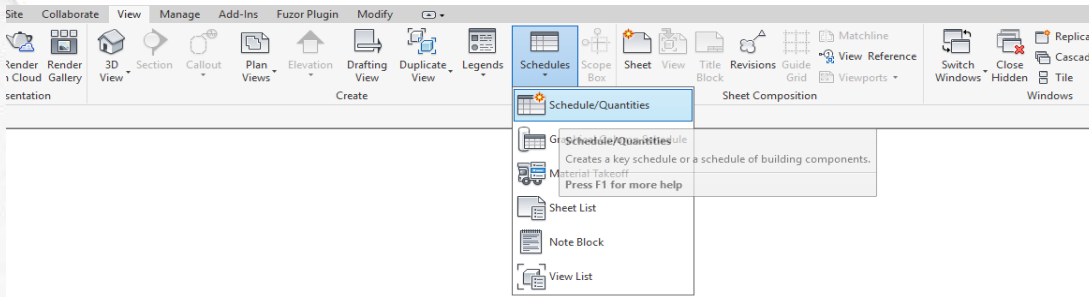
- **Group the precast facade revit link as model group in the project**



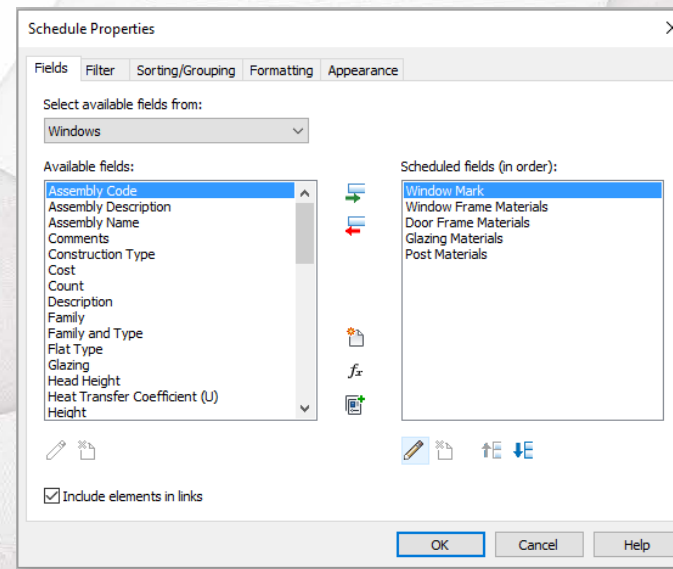
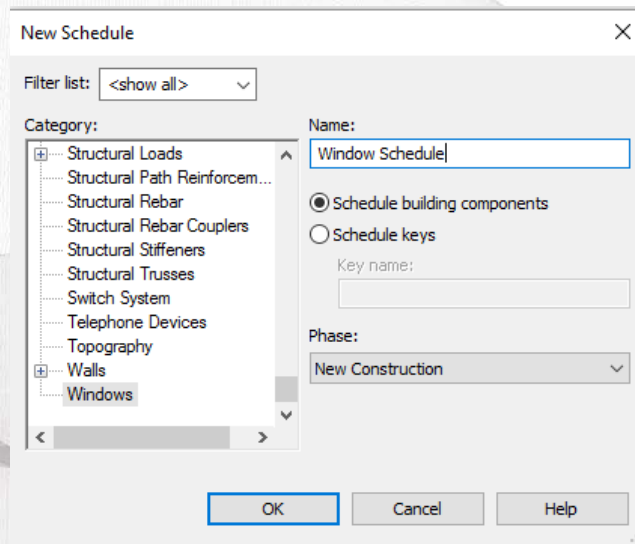


| Create Window Schedule

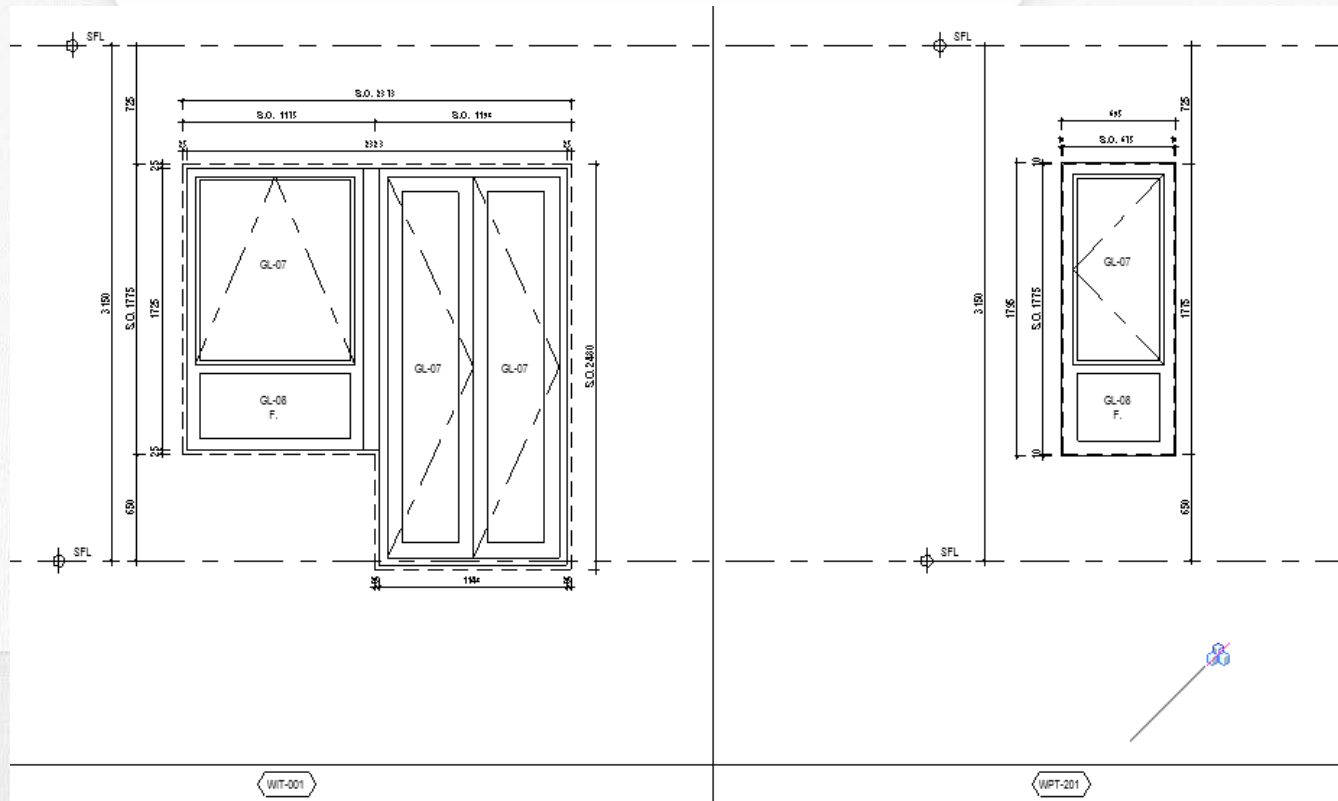
■ Select “Schedule/Quantities” to create a window schedule



■ Select Window Schedule and add field for Window Mark, Window Frame Materials, Door Frame Materials, Glazing Materials and Post Material.



- All the panel can be used to produce window schedule.
- Place the window schedule in the sheet.



Window Mark	Window Frame Materials	Door Frame Materials	Glazing Materials	Post Materials
WIT-001	70 MM EXTRUDED ALUMINUM SECTION AL-04		IGU	
WPT-201	70 MM EXTRUDED ALUMINUM SECTION AL-04		IGU	

Window Schedule Layout



Window Schedule Layout

																<div> <div>SD 29/04/14</div> <div>PP 8/3/08</div> </div>
																<div> <div>ARCHI+</div> <div>ARCHI+ INTERNATIONAL (PVT) LTD</div> <div>PROJECT</div> <div>PROPOSED RESIDENTIAL DEVELOPMENT AT THE SUEZ CANAL TOWN LOT 25, AREA 112, YUEN LONG, N.T.</div> <div>DATE</div> <div>20/05/2014</div> <div>BY</div> <div>AL</div> <div>SCALE</div> <div>1:25</div> <div>REVISION</div> <div>AL</div> <div>PROJECT NO.</div> <div>889</div> <div>REV. NO.</div> <div>889-A2-03-V-L12</div> </div>

- **Window Schedule Layout**

SECTION 1				SECTION 2				SECTION 3				SECTION 4			
1000 mm SECTION 1 - WINDOW SECTION (A1)				1000 mm SECTION 2 - WINDOW SECTION (A1)				1000 mm SECTION 3 - WINDOW SECTION (A1)				1000 mm SECTION 4 - WINDOW SECTION (A1)			
SECTION 5				SECTION 6				SECTION 7				SECTION 8			
1000 mm SECTION 5 - WINDOW SECTION (A1)				1000 mm SECTION 6 - WINDOW SECTION (A1)				1000 mm SECTION 7 - WINDOW SECTION (A1)				1000 mm SECTION 8 - WINDOW SECTION (A1)			

ARCHI+
 ARCHITECTS
 1000 mm SECTION 1 - WINDOW SECTION (A1)
 1000 mm SECTION 2 - WINDOW SECTION (A1)
 1000 mm SECTION 3 - WINDOW SECTION (A1)
 1000 mm SECTION 4 - WINDOW SECTION (A1)
 1000 mm SECTION 5 - WINDOW SECTION (A1)
 1000 mm SECTION 6 - WINDOW SECTION (A1)
 1000 mm SECTION 7 - WINDOW SECTION (A1)
 1000 mm SECTION 8 - WINDOW SECTION (A1)

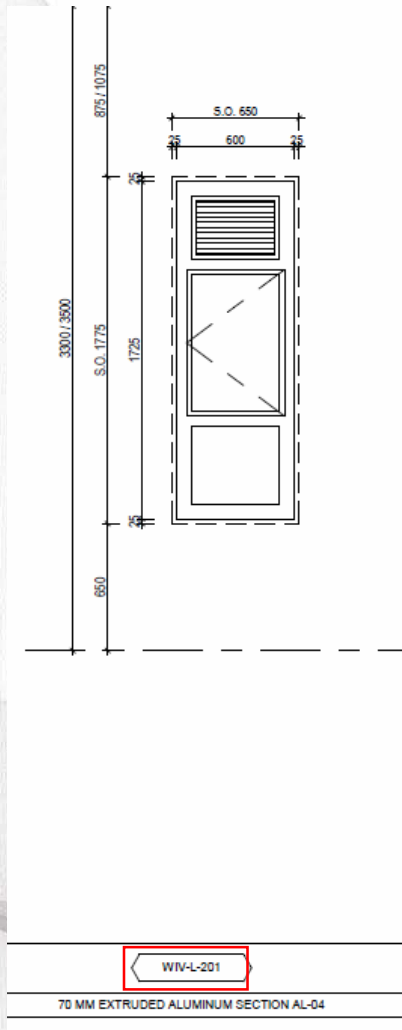
RD 2/24/14
 PP 8/1008
 1000 mm SECTION 1 - WINDOW SECTION (A1)
 1000 mm SECTION 2 - WINDOW SECTION (A1)
 1000 mm SECTION 3 - WINDOW SECTION (A1)
 1000 mm SECTION 4 - WINDOW SECTION (A1)
 1000 mm SECTION 5 - WINDOW SECTION (A1)
 1000 mm SECTION 6 - WINDOW SECTION (A1)
 1000 mm SECTION 7 - WINDOW SECTION (A1)
 1000 mm SECTION 8 - WINDOW SECTION (A1)

- **Window Schedule Layout**

[illegible]

Window Schedule Format

Sheet



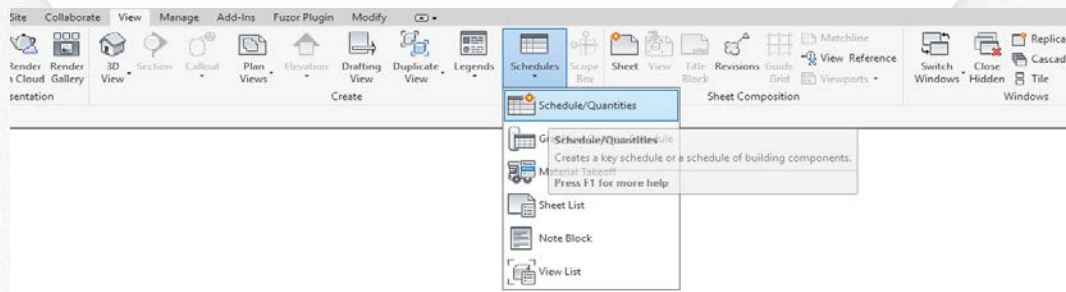
Parameter(Window Mark)

Window Schedule 20180209						
Window Mark	Type	Level	From Room: Flat Type	From Room: Name	Window Frame Materials	Glazing Materials
WV-B-201-R	WV-B-201-R	VL-G/F	B	BA3	70 MM EXTRUDED ALUMINUM SECTION AL-04	IGU
WV-L-201H-R	WV-L-201H-R	VL-G/F	B	KIT	70 MM EXTRUDED ALUMINUM SECTION AL-04	IGU
WV-L-201H	WV-L-201H	VL-G/F	A	KIT	70 MM EXTRUDED ALUMINUM SECTION AL-04	IGU
WV-303H	WV-303H	VL-G/F	B	BR3	70 MM EXTRUDED ALUMINUM SECTION AL-04	IGU
WV-S-002	WV-S-002	VL-G/F	B	LIVIDIN	70 MM EXTRUDED ALUMINUM SECTION AL-04	IGU
WV-302H-R	WV-302H-R	VL-G/F	B	BR2	70 MM EXTRUDED ALUMINUM SECTION AL-04	IGU
WV-S-001-R	WV-S-001-R	VL-G/F	B	MBR	70 MM EXTRUDED ALUMINUM SECTION AL-04	IGU
WV-S-001	WV-S-001	VL-G/F	A	MBR	70 MM EXTRUDED ALUMINUM SECTION AL-04	IGU
WV-302H	WV-302H	VL-G/F	A	BR2	70 MM EXTRUDED ALUMINUM SECTION AL-04	IGU
WV-S-002	WV-S-002	VL-G/F	A	LIVIDIN	70 MM EXTRUDED ALUMINUM SECTION AL-04	IGU
WV-303H-R	WV-303H-R	VL-G/F	A	BR3	70 MM EXTRUDED ALUMINUM SECTION AL-04	IGU
WV-301-R	WV-301-R	VL-1/F	C	BR4	70 MM EXTRUDED ALUMINUM SECTION AL-04	IGU
WV-L-202-R	WV-L-202-R	VL-1/F	C	KIT	70 MM EXTRUDED ALUMINUM SECTION AL-04	IGU
WV-L-202	WV-L-202	VL-1/F	A	KIT	70 MM EXTRUDED ALUMINUM SECTION AL-04	IGU
WV-L-101	WV-L-101	VL-1/F	B	KIT	70 MM EXTRUDED ALUMINUM SECTION AL-04	IGU
WV-B-201	WV-B-201	VL-1/F	B	MBA	70 MM EXTRUDED ALUMINUM SECTION AL-04	IGU
WV-B-201-R	WV-B-201-R	VL-1/F	B	BA2	70 MM EXTRUDED ALUMINUM SECTION AL-04	IGU
WV-301-R	WV-301-R	VL-2/F	C	BR4	70 MM EXTRUDED ALUMINUM SECTION AL-04	IGU
WV-L-202-R	WV-L-202-R	VL-2/F	C	KIT	70 MM EXTRUDED ALUMINUM SECTION AL-04	IGU
WV-L-202	WV-L-202	VL-2/F	A	KIT	70 MM EXTRUDED ALUMINUM SECTION AL-04	IGU
WV-L-101	WV-L-101	VL-2/F	B	KIT	70 MM EXTRUDED ALUMINUM SECTION AL-04	IGU
WV-B-201	WV-B-201	VL-2/F	B	MBA	70 MM EXTRUDED ALUMINUM SECTION AL-04	IGU
WV-B-201-R	WV-B-201-R	VL-2/F	B	BA2	70 MM EXTRUDED ALUMINUM SECTION AL-04	IGU
WV-301-R	WV-301-R	VL-3/F	B	BR3	70 MM EXTRUDED ALUMINUM SECTION AL-04	IGU
WV-L-202-R	WV-L-202-R	VL-3/F	B	KIT	70 MM EXTRUDED ALUMINUM SECTION AL-04	IGU
WV-L-202	WV-L-202	VL-3/F	A	KIT	70 MM EXTRUDED ALUMINUM SECTION AL-04	IGU
WV-F-001	WV-F-001	VL-3/F	B	BR2	70 MM EXTRUDED ALUMINUM SECTION AL-04	IGU
WV-S-002	WV-S-002	VL-3/F	B	LIVIDIN	70 MM EXTRUDED ALUMINUM SECTION AL-04	IGU
WV-S-002	WV-S-002	VL-3/F	A	LIVIDIN	70 MM EXTRUDED ALUMINUM SECTION AL-04	IGU
WV-201H	WV-201H	VL-3/F	B	BR4	70 MM EXTRUDED ALUMINUM SECTION AL-04	IGU
WV-S-002	WV-S-002	VL-5/F	B	LIVIDIN	70 MM EXTRUDED ALUMINUM SECTION AL-04	IGU
WV-502	WV-502	VL-5/F	B	LIVIDIN	70 MM EXTRUDED ALUMINUM SECTION AL-04	IGU
WV-502	WV-502	VL-5/F	A	LIVIDIN	70 MM EXTRUDED ALUMINUM SECTION AL-04	IGU
WV-503	WV-503	VL-5/F	A	LIVIDIN	70 MM EXTRUDED ALUMINUM SECTION AL-04	IGU
WV-503	WV-503	VL-5/F	B	LIVIDIN	70 MM EXTRUDED ALUMINUM SECTION AL-04	IGU
WV-303	WV-303	VL-5/F	B	BR4	70 MM EXTRUDED ALUMINUM SECTION AL-04	IGU
WV-S-002	WV-S-002	VL-5/F	A	LIVIDIN	70 MM EXTRUDED ALUMINUM SECTION AL-04	IGU
WV-L-301	WV-L-301	VL-5/F	B	KIT	70 MM EXTRUDED ALUMINUM SECTION AL-04	IGU
WV-302H-R	WV-302H-R	VL-6/F	B	BR2	70 MM EXTRUDED ALUMINUM SECTION AL-04	IGU
WV-S-001-R	WV-S-001-R	VL-6/F	B	BR3	70 MM EXTRUDED ALUMINUM SECTION AL-04	IGU
WV-S-001	WV-S-001	VL-6/F	A	BR4	70 MM EXTRUDED ALUMINUM SECTION AL-04	IGU
WV-501H	WV-501H	VL-6/F	A	BR3	70 MM EXTRUDED ALUMINUM SECTION AL-04	IGU
WV-302H	WV-302H	VL-6/F	A	BR2	70 MM EXTRUDED ALUMINUM SECTION AL-04	IGU
WV-303H	WV-303H	VL-G/F	B	MBR	70 MM EXTRUDED ALUMINUM SECTION AL-04	IGU
WV-302H	WV-302H	VL-G/F	B	MBR	70 MM EXTRUDED ALUMINUM SECTION AL-04	IGU
WV-B-202	WV-B-202	VL-G/F	B	MBA	70 MM EXTRUDED ALUMINUM SECTION AL-04	IGU
WV-201H	WV-201H	VL-G/F	A	MBR	70 MM EXTRUDED ALUMINUM SECTION AL-04	IGU
WV-501H	WV-501H	VL-G/F	A	MBR	70 MM EXTRUDED ALUMINUM SECTION AL-04	IGU
WV-101	WV-101	VL-1/F	A	BR2	70 MM EXTRUDED ALUMINUM SECTION AL-04	IGU
WV-101	WV-101	VL-2/F	A	BR2	70 MM EXTRUDED ALUMINUM SECTION AL-04	IGU
WV-101	WV-101	VL-3/F	A	BR2	70 MM EXTRUDED ALUMINUM SECTION AL-04	IGU

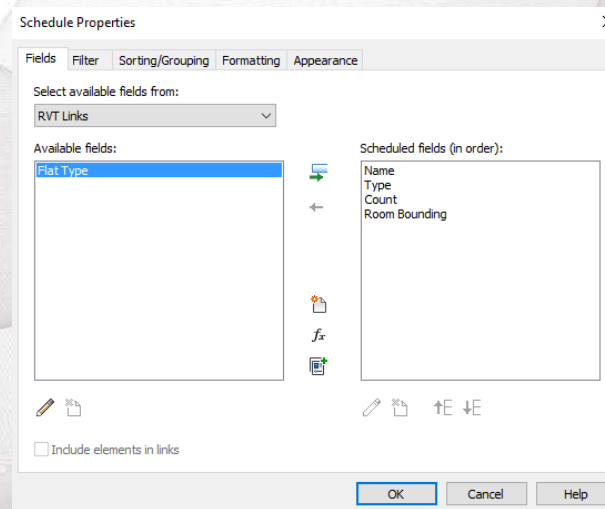
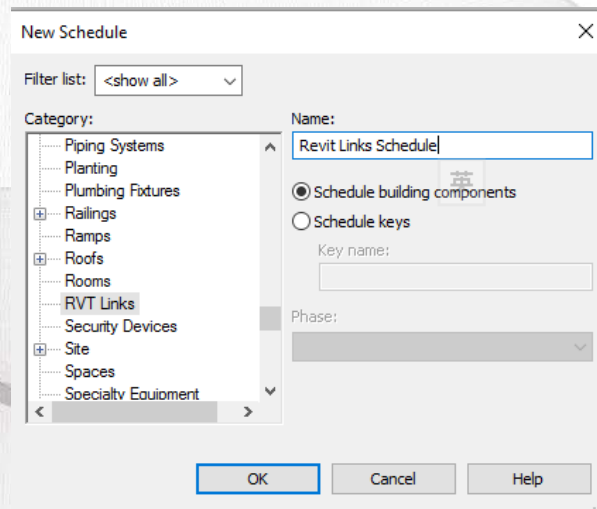


| Create Revit Links Schedule

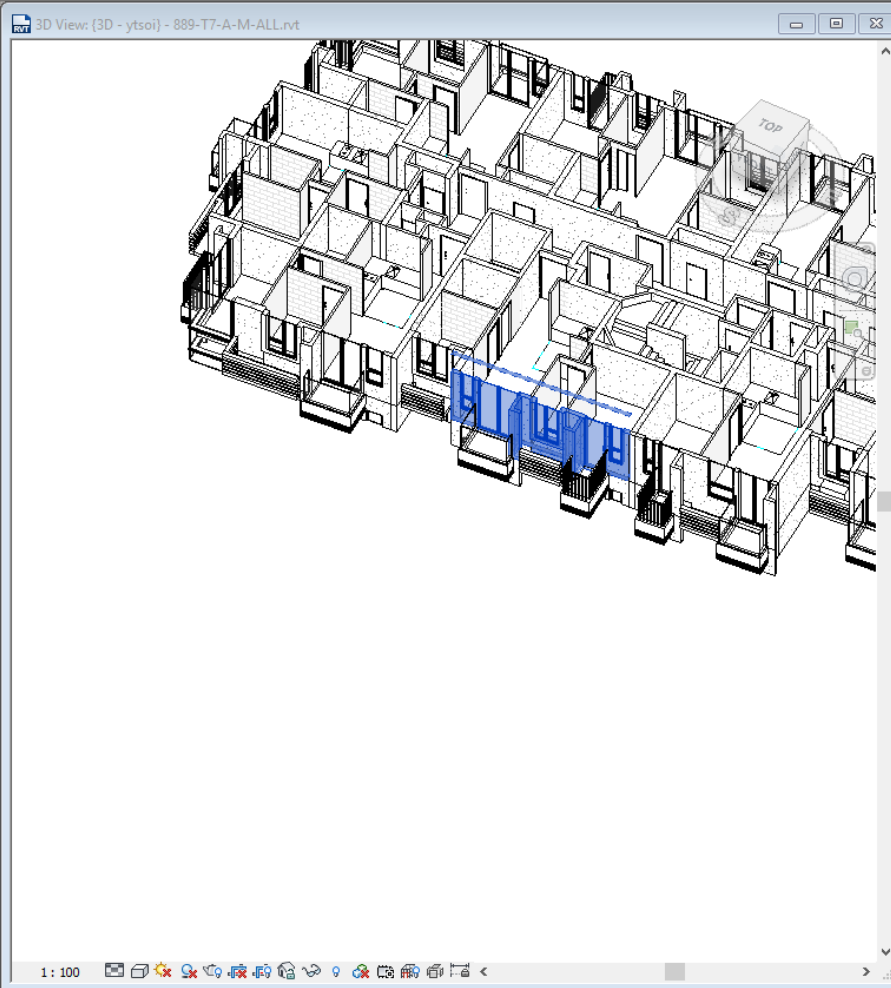
- In order to have obtain "level" of windows and doors listed in the the schedule for Windows and Doors embed into the Precast Panel, Revit Links Schedule should be shown in the sheet.
- Select "Schedule/Quantities" to create a Revit Links Schedule.



- Select Revit Links Schedule and add field for Name, Type, Count and Room Bounding.



- Below Revit Links Schedule shows some of the flats may include two or three types of precast façade.



The screenshot displays a 3D architectural model of a multi-story building with a complex facade. A blue rectangular area on the facade is highlighted, indicating a specific section of the building. To the right of the model, a 'Schedule: Revit Links Schedule - 889-T7-A-M-ALL.rvt' is open, showing a list of precast facade types and their quantities.

Revit Link Name	Quantity	Count
889-PC-A-M-Type8R.rvt	184	1
889-PC-A-M-Type8R.rvt	216	1
889-PC-A-M-Type8R.rvt	222	1
889-PC-A-M-Type8R.rvt	254	1
889-PC-A-M-Type8R.rvt	260	1
889-PC-A-M-Type8R.rvt	292	1
889-PC-A-M-Type8R.rvt	298	1
889-PC-A-M-Type8R.rvt	330	1
889-PC-A-M-Type8R.rvt	336	1
889-PC-A-M-Type8R.rvt	368	1
889-PC-A-M-Type8R.rvt	375	1
889-PC-A-M-Type8R.rvt	420	1
889-PC-A-M-Type8R.rvt	426	1
889-PC-A-M-Type11-10F.rvt	148	1
889-PC-A-M-Type11-3500H.rvt	91	1
889-PC-A-M-Type11.rvt	23	1
889-PC-A-M-Type11.rvt	30	1
889-PC-A-M-Type11.rvt	171	1
889-PC-A-M-Type11.rvt	175	1
889-PC-A-M-Type11.rvt	209	1
889-PC-A-M-Type11.rvt	213	1
889-PC-A-M-Type11.rvt	247	1
889-PC-A-M-Type11.rvt	251	1
889-PC-A-M-Type11.rvt	285	1
889-PC-A-M-Type11.rvt	289	1
889-PC-A-M-Type11.rvt	323	1
889-PC-A-M-Type11.rvt	327	1
889-PC-A-M-Type11.rvt	362	1
889-PC-A-M-Type11.rvt	366	1
889-PC-A-M-Type11.rvt	413	1
889-PC-A-M-Type11.rvt	417	1
889-PC-A-M-Type13.rvt	55	1
889-PC-A-M-Type13.rvt	187	1
889-PC-A-M-Type13.rvt	225	1
889-PC-A-M-Type13.rvt	263	1
889-PC-A-M-Type13.rvt	301	1
889-PC-A-M-Type13.rvt	339	1
889-PC-A-M-Type13.rvt	378	1
889-PC-A-M-Type13.rvt	429	1
889-PC-A-M-Type13R-10F.rvt	141	1
889-PC-A-M-Type13R-3500H.rvt	116	1
889-PC-A-M-Type13R.rvt	57	1
889-PC-A-M-Type13R.rvt	188	1



Thank you !