

The logo consists of the letters 'NCID' in a bold, white, sans-serif font. The letters are stylized with thick strokes and sharp angles, giving it a modern, architectural feel. The 'N' and 'C' are connected, as are the 'I' and 'D'.

NCID

A DVANCED  
C ONSTRUCTION  
I NFORMATION  
D EVELOPMENT

## I BIM in a Team

David Fung

*HKIA Registered Architect*

*HKIBIM Board Member BIM specialist*

*HKUSPACE, CHUHAU COLLEGE,*

*Department of Architecture, Associate Professor*

*Managing Director, A.C.I.D.*



Bible said, "Men do not live on bread alone, but on every word from the mouth of God."

Project directors said, "Projects are not done by individual alone, but by every contribution coming from each of the TEAM members."



# TEAMS

1. In - House Design & Production TEAM
2. Project TEAM
3. Other Consultant TEAM



use of passive environmental controls, setting a precedent in Pakistan.

Our London and Manchester offices have collaborated with our specialist Advanced Modelling Group, using Ecotect analysis to interpret the climatic performance.







## Professional Designers

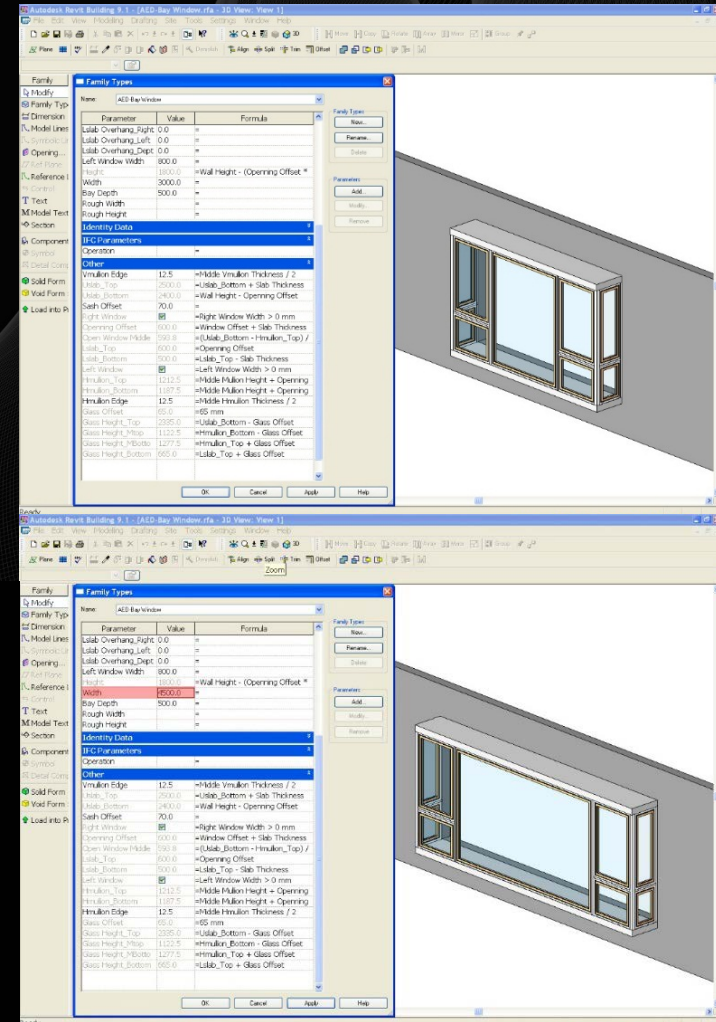
- Know what to design professional
- Know what to communicate!

## Family Man

- Champion of System
- Parametric Modeling
- Mathematical Sense!!!

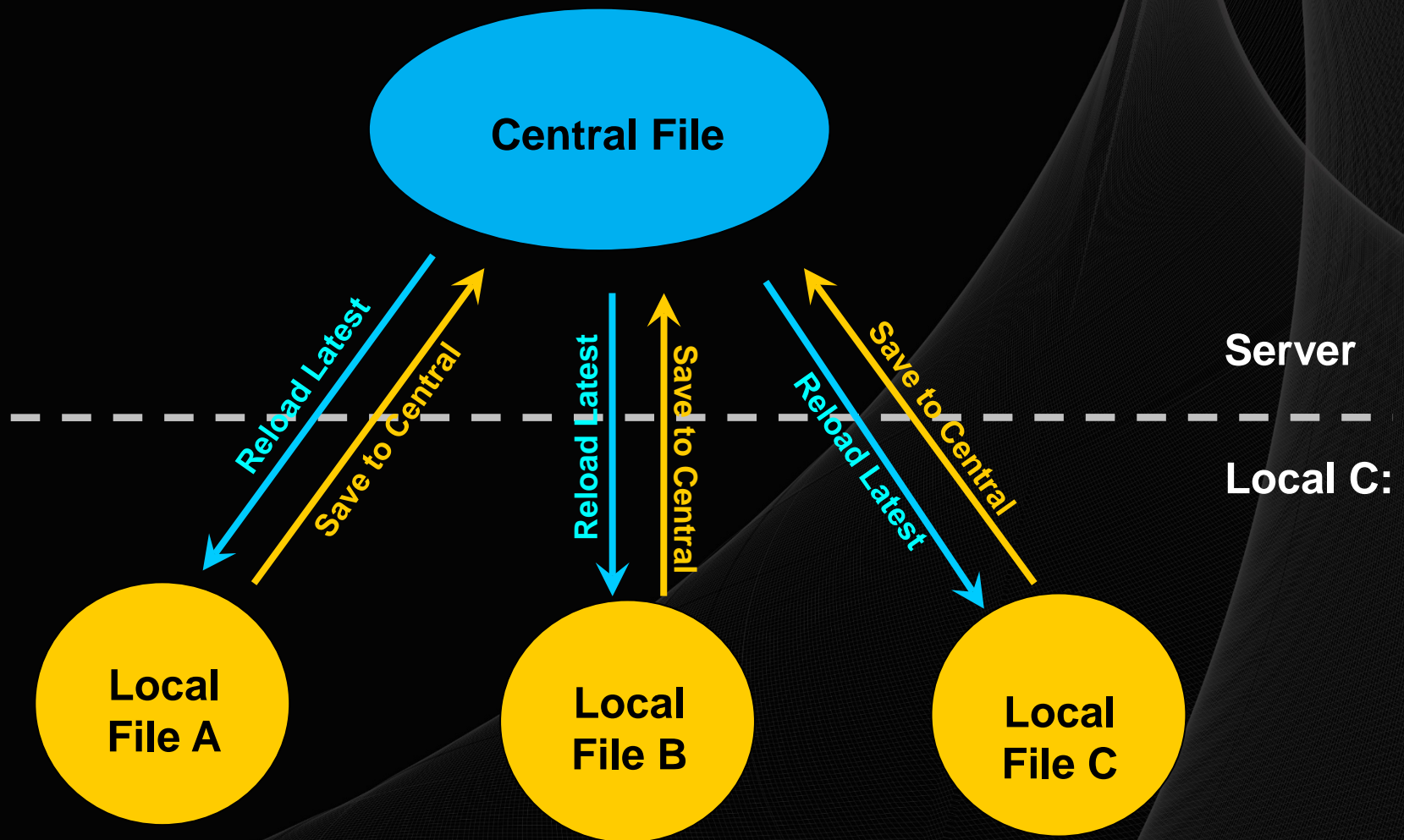
## Technicians

- Competent BIM operators

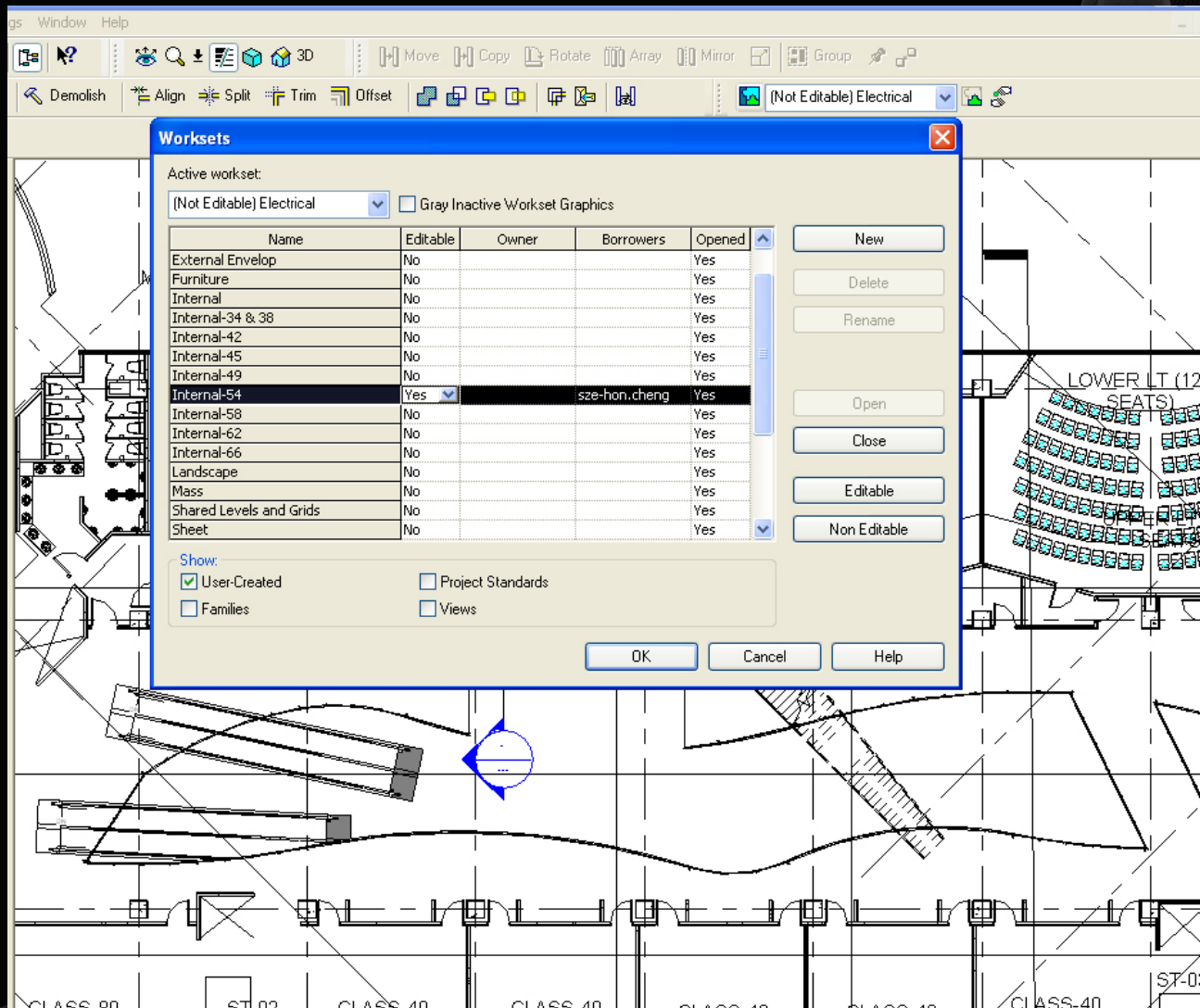


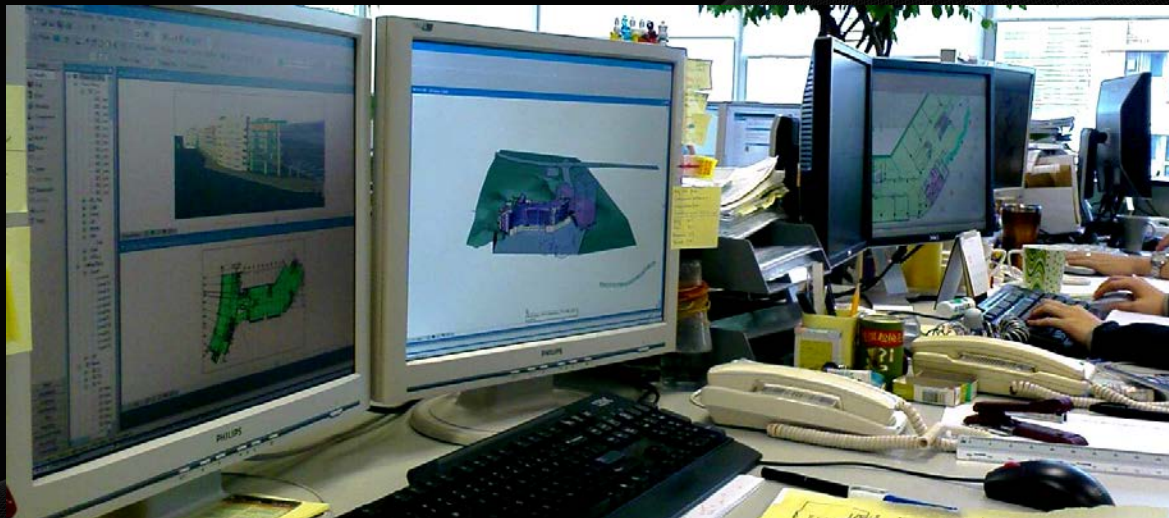


- Same Reference System
- Same Co-ordinates, same Height
- Complex model broken into pieces
- Fast network
- Physical Communication
- Same BIM Project Standard - naming

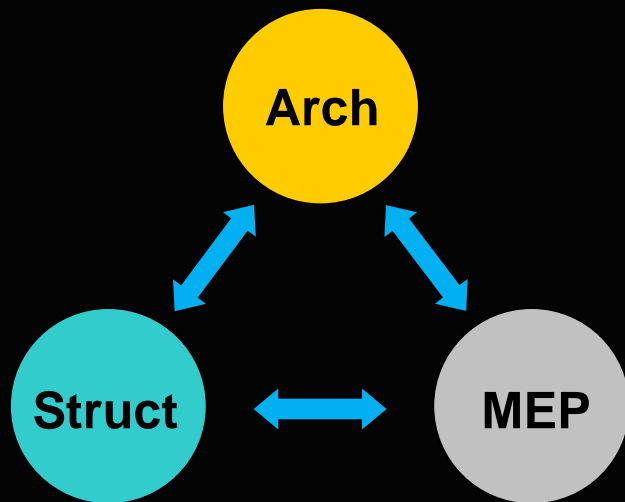


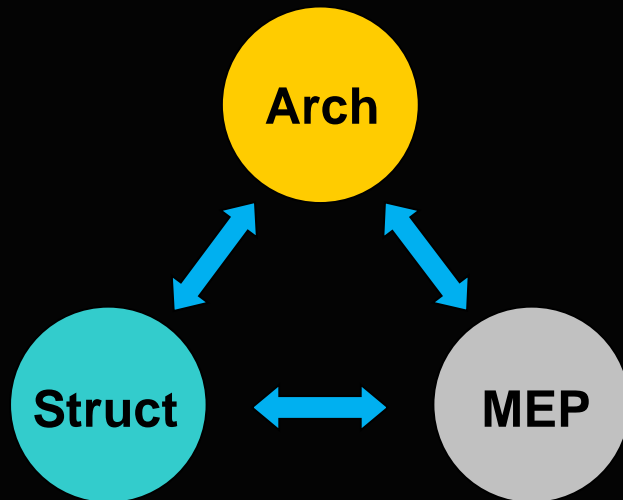






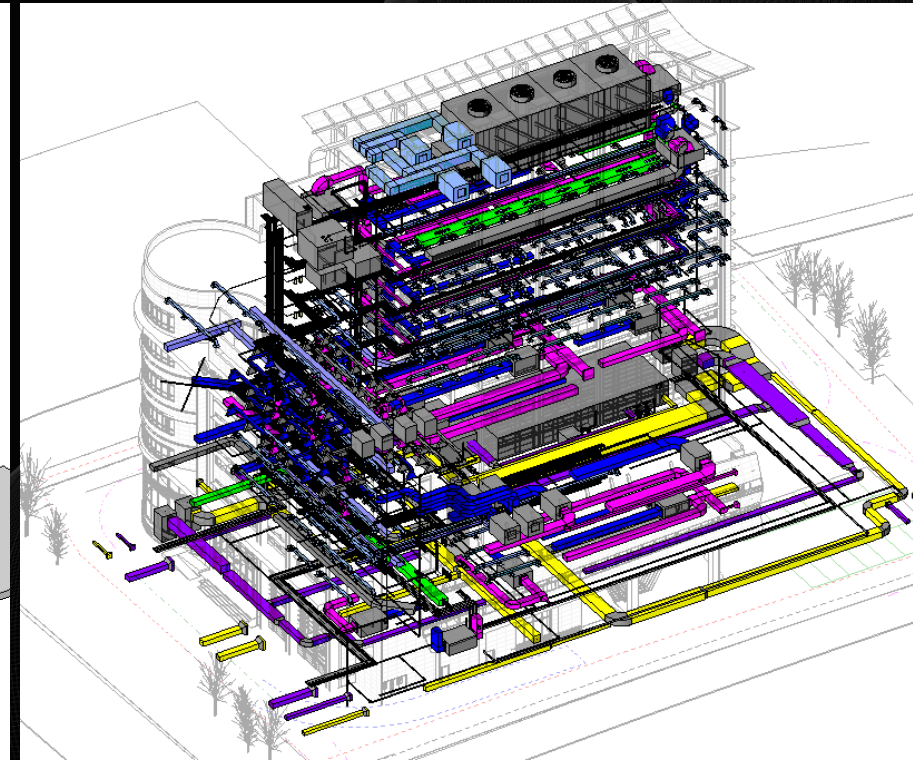
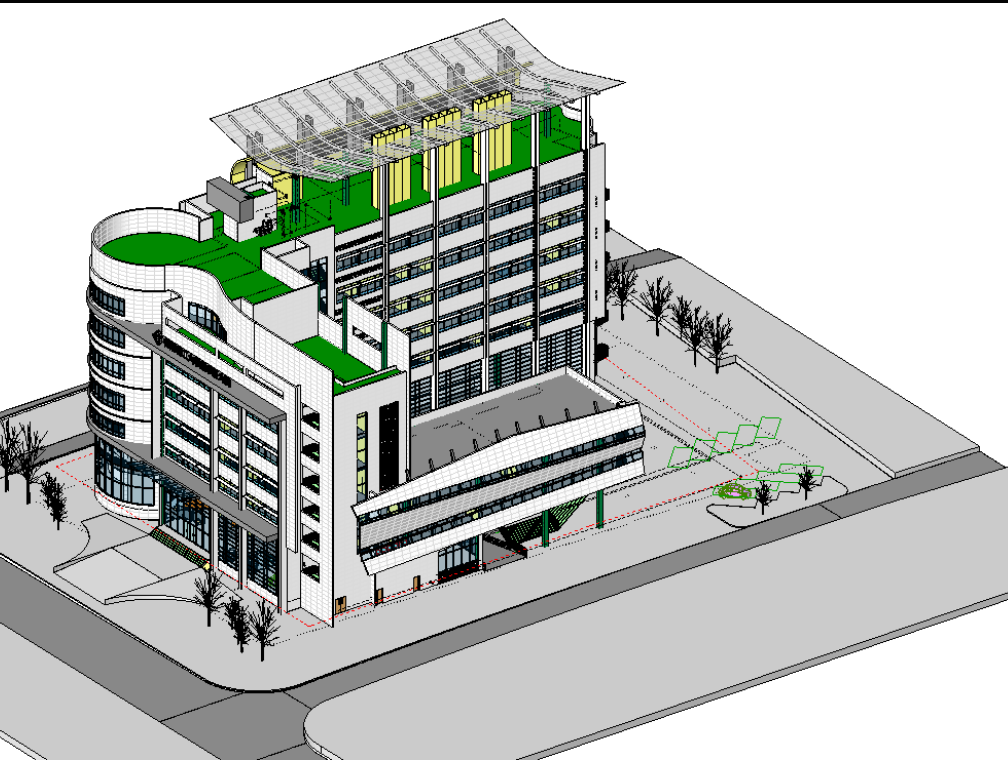






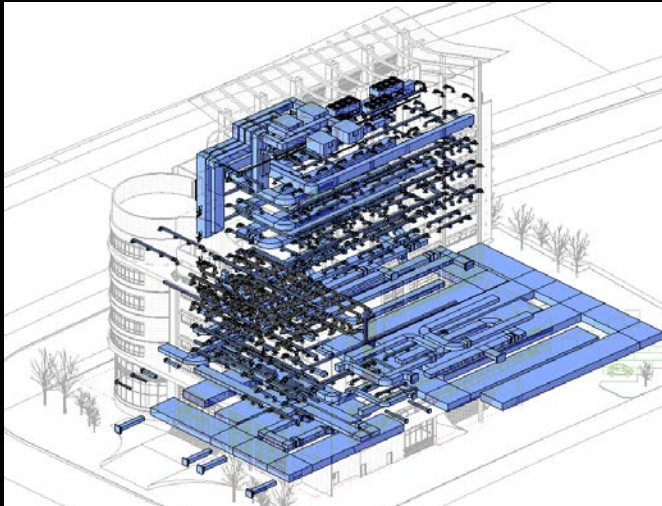
Best Practice: Office with All Disciplines  
Second Best: Efficient Communication



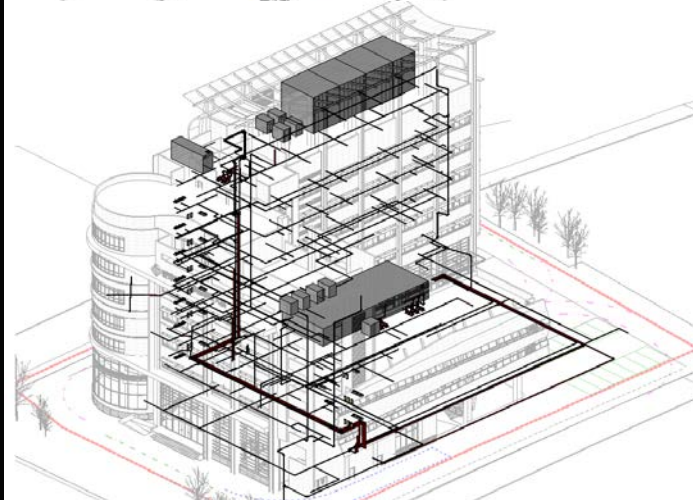
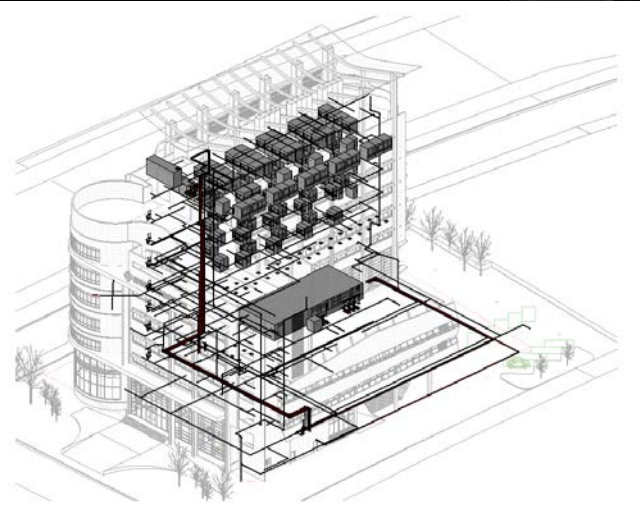




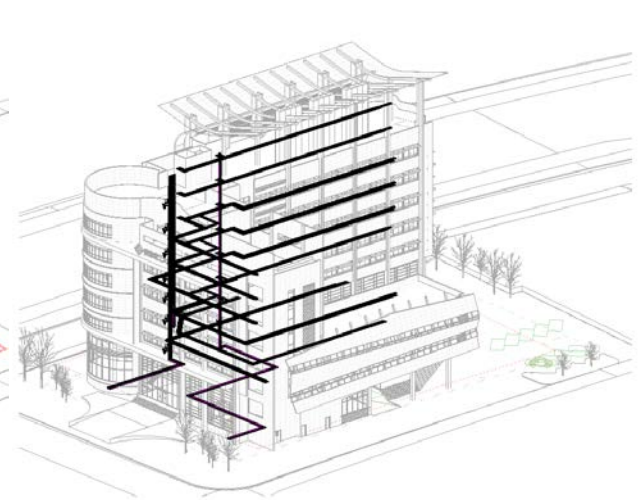
## HVAC Installation



## Fire Services Installation

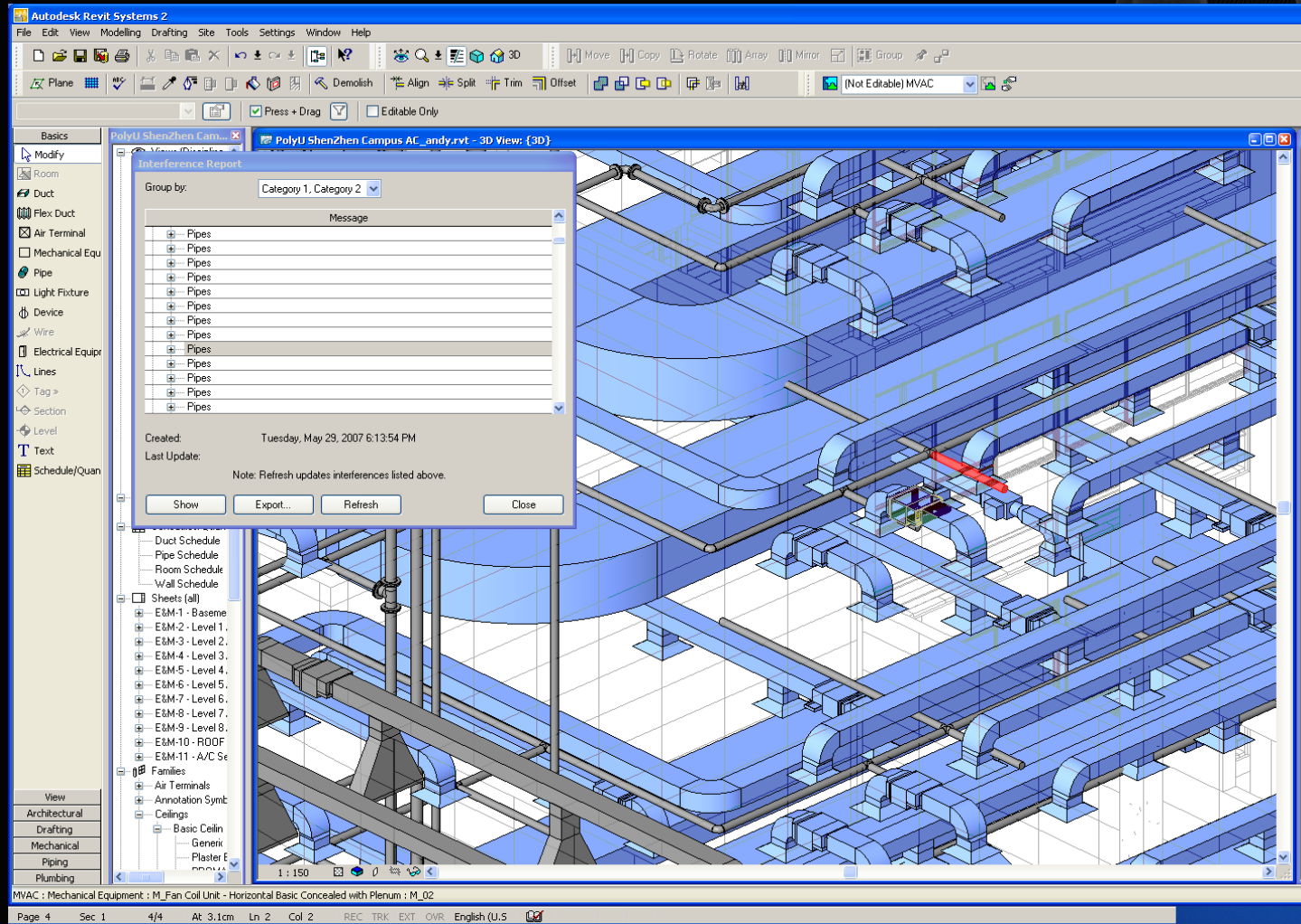


## P/D Installation



## Electricity Installation

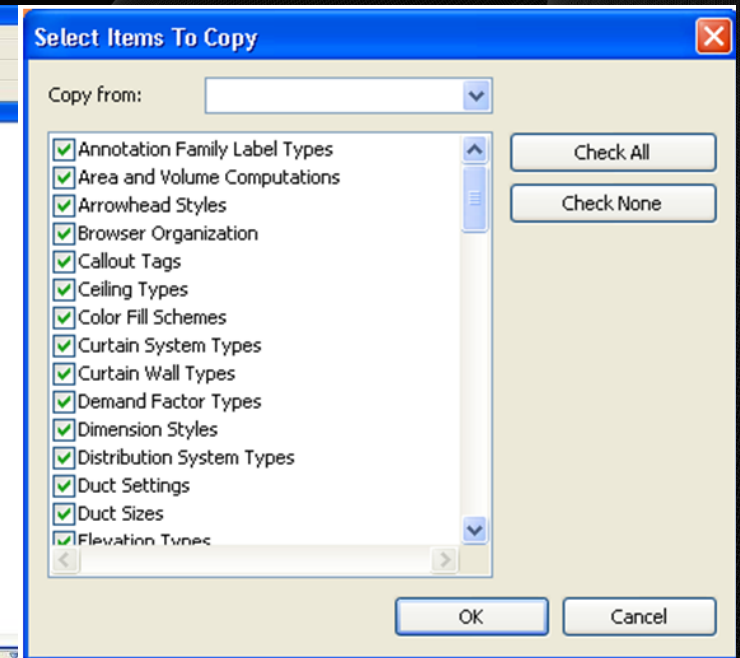
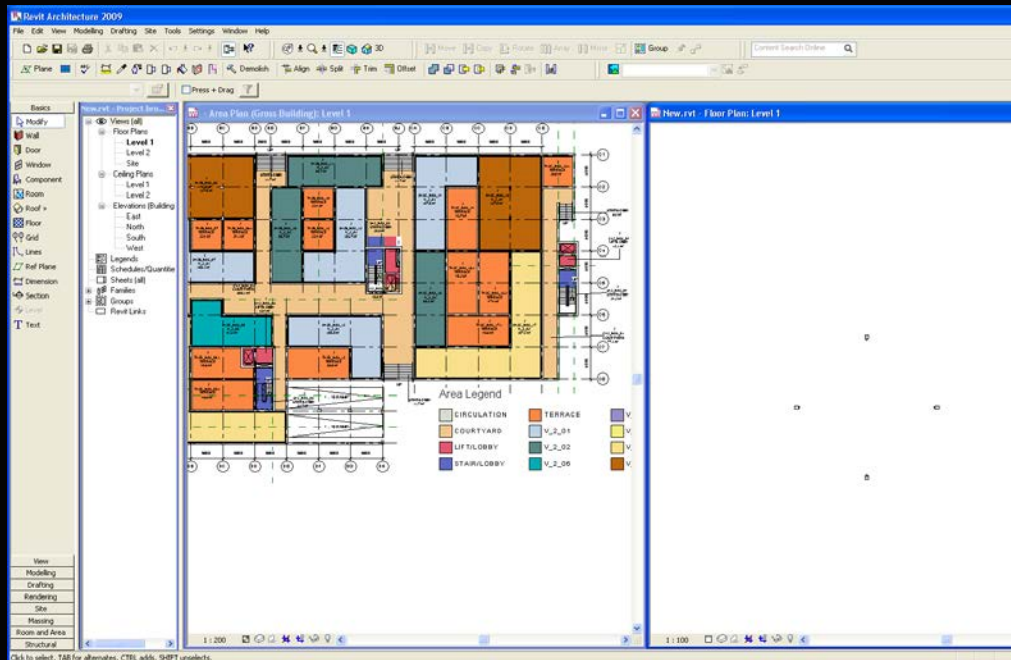




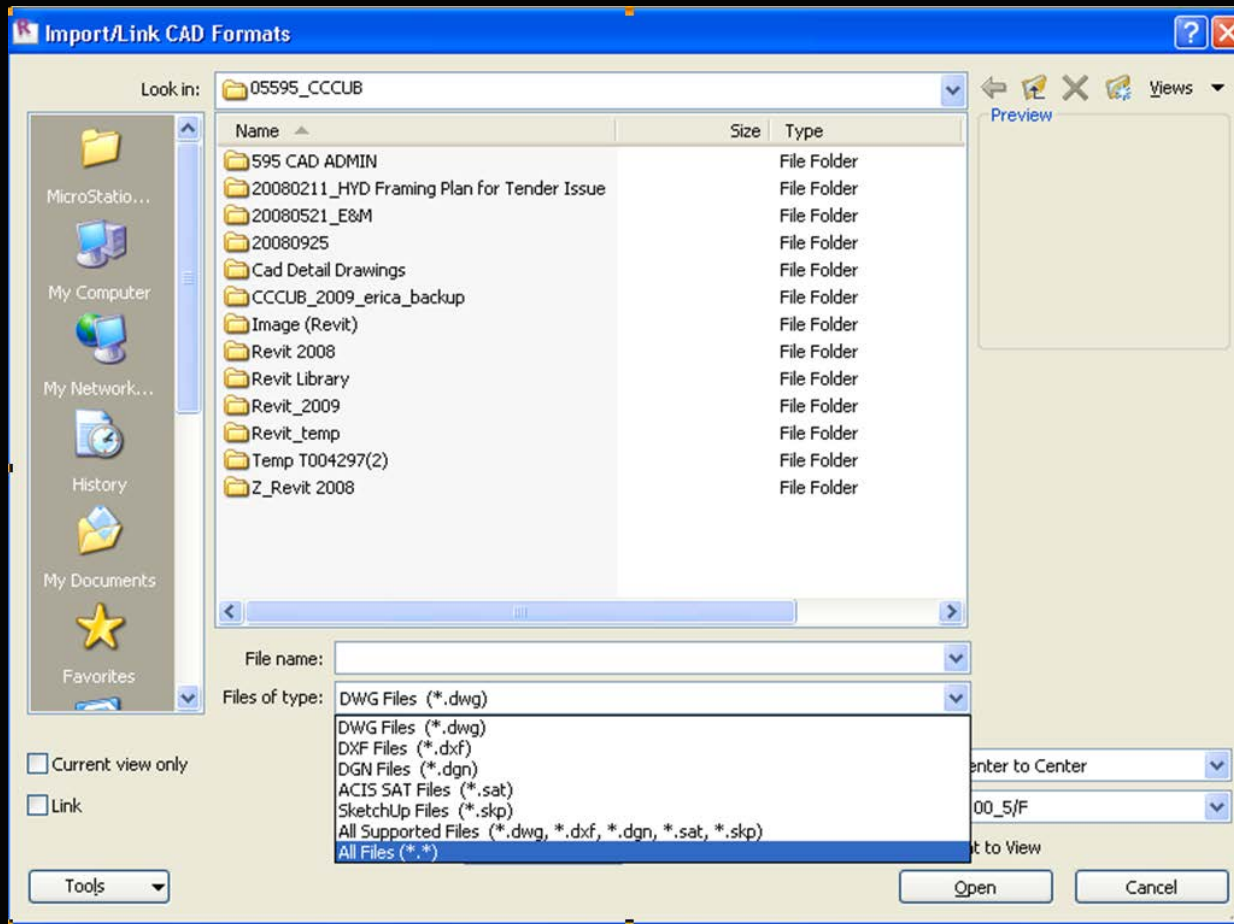




- Communication
- Email (?) / FTP
- Time Lag
- Same Co-ordinate, Height
- Different Project Standard



- **Filing Conversion**
- Receive information – Rebuild from traditional 2D to 3D presentation





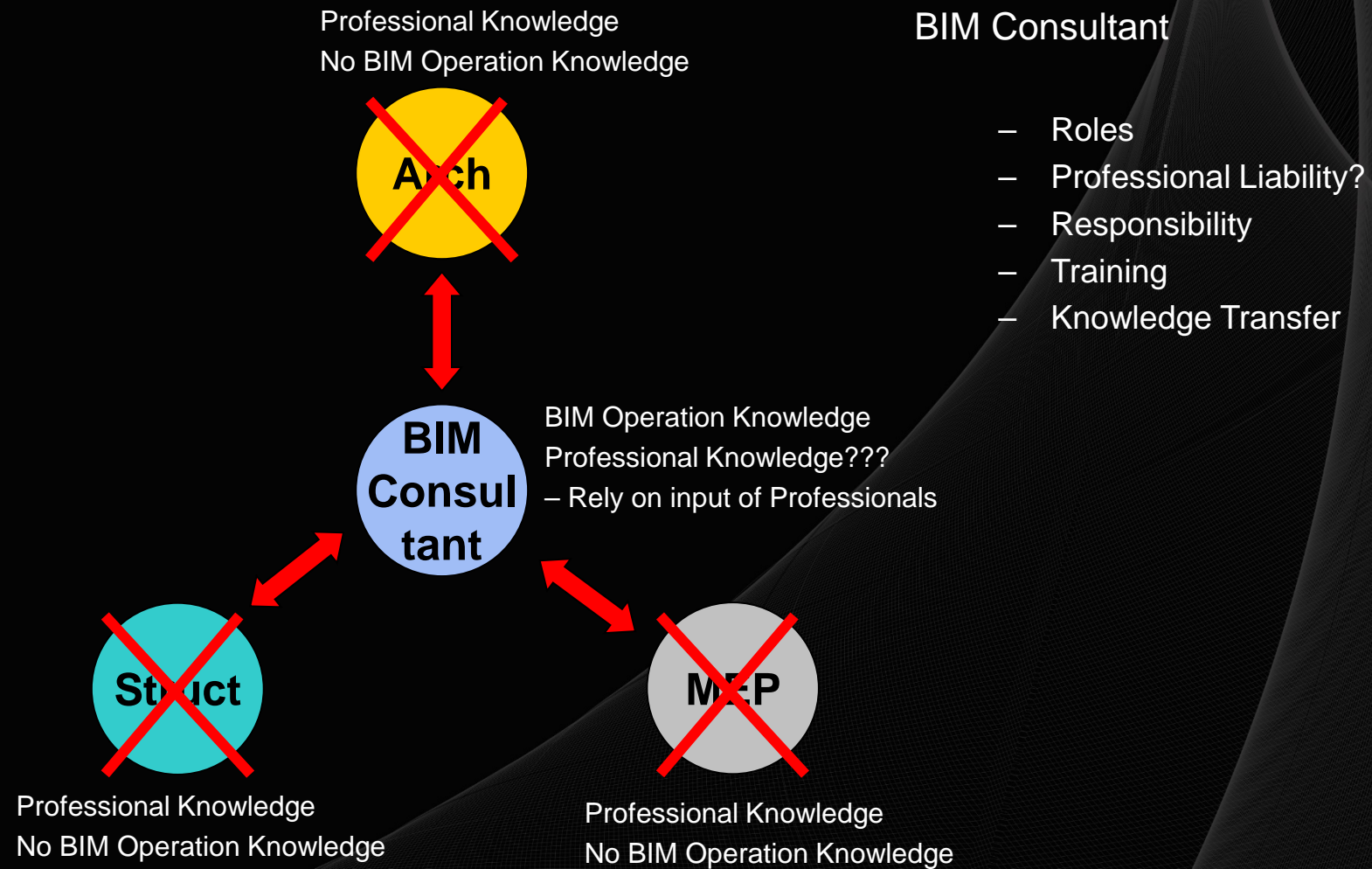
- **Filing Conversion**
- Release Information – Convert back to other 2D information, lost of information, CAD standard

Export Layers: C:\Program Files (x86)\Revit Architecture 2009\Data\exportlayers-dwg-AIA.txt

Category	Projection		Cut	
	Layer name	Color ID	Layer name	Color ID
Cut Pattern	A-WALL-PATT	2	A-WALL-PATT	2
Finish 1 [4]	{ A-WALL-MBNT }	2	{ A-WALL }	2
Finish 2 [5]	{ A-WALL-MBNT }	2	{ A-WALL }	2
Hidden Lines	A-WALL-HIDN	2	A-WALL-HIDN	2
Membrane Layer	{ A-WALL-MBNT }	2	{ A-WALL }	2
Structure [1]	{ A-WALL-MBNT }	2	{ A-WALL }	2
Substrate [2]	{ A-WALL-MBNT }	2	{ A-WALL }	2
Surface Pattern	A-WALL-PATT	2	A-WALL-PATT	2
Thermal/Air Layer [	{ A-WALL-MBNT }	2	{ A-WALL }	2
Wall Sweep - Corni	{ A-WALL-MBNT }	2	{ A-WALL }	2
Wall Sweeps	{ A-WALL-MBNT }	2	{ A-WALL }	2
<b>Walls/Interior</b>	I-WALL	2	I-WALL	2
<b>Walls/Exterior</b>	A-WALL	2	A-WALL	2
<b>Walls/Foundation</b>	S-FNDN	2	S-FNDN	2
<b>Walls/Retaining</b>	SITE-WALL	2	SITE-WALL	2
<b>Window Tags</b>	A-GLAZ-IDEN	6		
<b>Windows</b>	A-GLAZ	6	A-GLAZ	6
Architrave	{ A-GLAZ }	6	{ A-GLAZ }	6
Cavity Closer	{ A-GLAZ }	6	{ A-GLAZ }	6
Elevation Swing	{ A-GLAZ }	6	{ A-GLAZ }	6
Flashings	{ A-GLAZ }	6	{ A-GLAZ }	6
Frame-Sash	{ A-GLAZ }	6	{ A-GLAZ }	6
Frame/Mullion	A-GLAZ-FRAM	6	A-GLAZ-FRAM	6
Glass	A-GLAZ-GLAS	6	A-GLAZ-GLAS	6
Hidden Lines	{ A-GLAZ }	6	{ A-GLAZ }	6
Jamb Liner	{ A-GLAZ }	6	{ A-GLAZ }	6

Load... Standard... Save As...

OK Cancel Help





- QS, Environmental Consultants
- Specialist...

