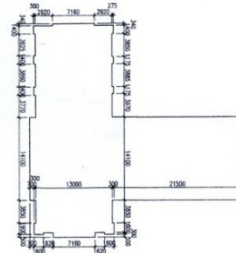


SITE COVERAGE & PLOT RATIO CALCULATION

1. UNDER BUILDING REGULATION

- A. CLASS OF SITE = A
- B. AREA OF SITE (FROM LEASE) = 1990.8 a.m.
- PROPOSED USE OF SITE = NON-DOMESTIC
- MEAN STREET LEVEL = 12.000
- BUILDING TOP LEVEL = 33.9999 m
- PROPOSED HEIGHT OF BUILDING = 84.0 m p.s.
- NON-DOMESTIC PERMITTED PERCENTAGE SITE COVERAGE = 95 %
- NON-DOMESTIC PERMITTED PLOT RATIO = 6.7
- C. SITE COVERAGE = 788.919 a.m.
- THEREFORE SITE COVERAGE = 39.63 % < 95 %
- D. PLOT RATIO = 24.4 / 3.7 = 6.6
- PROPOSED NON-DOMESTIC GROSS FLOOR AREA = 24.4 / 3.7 = 6.6
- PROPOSED NON-DOMESTIC PLOT RATIO = 2336.567 a.m. / 1990.8 a.m. = 1.19 < 6.7 (O.K.)



SITE COVERAGE DIAGRAM

2. UNDER LEASE CONDITION

- A. PERMITTED USE OF SITE = CHURCH TOGETHER WITH ANCILLARY CHURCH FACILITIES
- PROPOSED USE OF SITE = AS ABOVE
- B. GROSS FLOOR AREA : MAXIMUM PERMISSIBLE GFA UNDER LEASE = 2,520 a.m.
- TOTAL GFA OF PROPOSED DEVELOPMENT = 2,441.21 a.m.
- C. BUILDING HEIGHT : MEAN FORMATION LEVEL OF SITE : 12.000
- BUILDING TOP LEVEL : 84.000 a.m.
- BUILDING HEIGHT : 49.000 m (15)
- D. SITE COVERAGE : MAXIMUM PERMISSIBLE SITE COVERAGE : 40%
- PROPOSED SITE COVERAGE : 39.63% < 40% (O.K.)
- E. PARKING SPACE : PARKING REQUIREMENT UNDER LEASE = 14 CARPARKING SPACES
- PROPOSED PARKING PROVISION = AND 1 U/LA BAY SAME AS ABOVE

STAIR WIDTH OF STAIR PROVIDED (NO. OF STOREY SERVED ABOVE GROUND DISCHARGE VALUE)	ACTUAL	NO. OF PERSONS ABOVE GROUND
ST-A 150	2	250
ST-B 150	2	250
ST-C 175	3	484
		1504

FLOOR	CAPACITY OF ROOM OR STOREY	MIN. NO. OF EXIT DOORS (FROM ROOM OR STOREY)	MIN. WIDTH OF EXIT ROUTES (FROM STOREY)							
			EXIT DOORS	EXIT ROUTES	EXIT DOORS	EXIT ROUTES	EXIT DOORS	EXIT ROUTES	EXIT DOORS	EXIT ROUTES
1/F	281	2	3500	3500	3500	3575	1050	1050	1050	1050
2/F	488	2	3500	3500	3500	3575	1050	1050	1050	1050
3/F	28	1	1700	1700	2350	750	1050	850	1050	1050

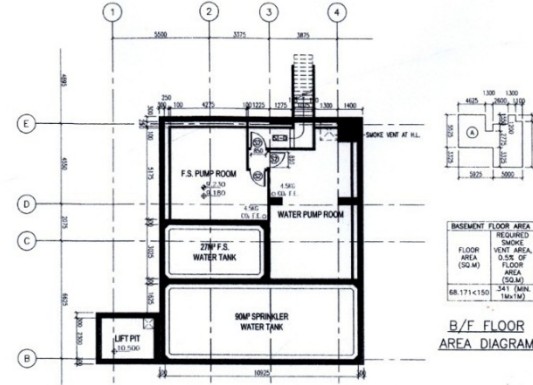
LOCATION	USE	SCHEDULE OF SANITARY FITMENTS PROVISIONS									
		TOTAL W.C.	W.C.	F.	B.	S.	U.	W.C.	W.C.	W.C.	W.C.
OFFICE	18	13	1	1	1	1	1	1	1	1	1
OFFICE OF PUBLIC	843	1472	111	5	14	30	10	5	14	30	10

COMPARTMENT	CLASS	COMPARTMENT VOLUME	PROP. RESIST.	FIRE RESISTANCE REQUIREMENT FOR ELEMENTS OF CONSTRUCTION									
				R.C. WALL	R.C. SLAB	R.C. COLUMN	R.C. BEAM	R.C. STAIR	R.C. WALL	R.C. SLAB	R.C. COLUMN	R.C. BEAM	R.C. STAIR
A	(BASEMENT)	204.813	4	180	25	170	45*	35	450	280	80*	170	50*
B	(CARPARKING)	817.028	1	75	15	100	20	25	200	200	30	85	20
C	(CARPARKING)	338.502	1	75	15	100	20	25	200	200	30	85	20
D	(PLACE OF ASSEMBLY)	1683.478	1	75	15	100	20	25	200	200	30	85	20
E	(PLACE OF ASSEMBLY)	4314.893	1	75	15	100	20	25	200	200	30	85	20
F	(PLACE OF ASSEMBLY)	3508.148	1	75	15	100	20	25	200	200	30	85	20
G	(PLACE OF ASSEMBLY)	433.478	1	75	15	100	20	25	200	200	30	85	20
H	(WALL PLANT RETENTION DIFFERENT USES/LEAS)	-	2	100	25	125	25	35	300	200	40	125	35

REFUSE STORAGE CALCULATION

UFR = 1341.440 a.m. < 3,980 a.m.

THEREFORE, STORAGE CHAMBER IS NOT REQUIRED ACCORDING TO B09/SCM, 53(3)



B/F PLAN, 1:100

FLOOR	USE	CAPACITY OF ROOM OR STOREY	MIN. WIDTH OF EXIT ROUTES (FROM STOREY)							
			EXIT DOORS	EXIT ROUTES	EXIT DOORS	EXIT ROUTES	EXIT DOORS	EXIT ROUTES	EXIT DOORS	EXIT ROUTES
1/F	281	2	3500	3500	3500	3575	1050	1050	1050	1050
2/F	488	2	3500	3500	3500	3575	1050	1050	1050	1050
3/F	28	1	1700	1700	2350	750	1050	850	1050	1050

FLOOR	USE	CAPACITY OF ROOM OR STOREY	MIN. WIDTH OF EXIT ROUTES (FROM STOREY)							
			EXIT DOORS	EXIT ROUTES	EXIT DOORS	EXIT ROUTES	EXIT DOORS	EXIT ROUTES	EXIT DOORS	EXIT ROUTES
1/F	281	2	3500	3500	3500	3575	1050	1050	1050	1050
2/F	488	2	3500	3500	3500	3575	1050	1050	1050	1050
3/F	28	1	1700	1700	2350	750	1050	850	1050	1050

FLOOR	USE	CAPACITY OF ROOM OR STOREY	MIN. WIDTH OF EXIT ROUTES (FROM STOREY)							
			EXIT DOORS	EXIT ROUTES	EXIT DOORS	EXIT ROUTES	EXIT DOORS	EXIT ROUTES	EXIT DOORS	EXIT ROUTES
1/F	281	2	3500	3500	3500	3575	1050	1050	1050	1050
2/F	488	2	3500	3500	3500	3575	1050	1050	1050	1050
3/F	28	1	1700	1700	2350	750	1050	850	1050	1050

FLOOR	USE	CAPACITY OF ROOM OR STOREY	MIN. WIDTH OF EXIT ROUTES (FROM STOREY)							
			EXIT DOORS	EXIT ROUTES	EXIT DOORS	EXIT ROUTES	EXIT DOORS	EXIT ROUTES	EXIT DOORS	EXIT ROUTES
1/F	281	2	3500	3500	3500	3575	1050	1050	1050	1050
2/F	488	2	3500	3500	3500	3575	1050	1050	1050	1050
3/F	28	1	1700	1700	2350	750	1050	850	1050	1050

Plan Approved
 K. S. S. WONG
 Chief Building Engineer
 for BUILDING AUTHORITY
 - 1 NOV 2005

