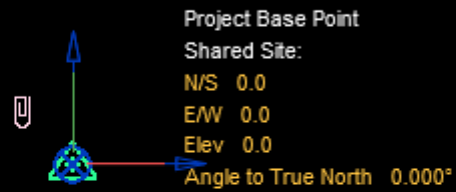


The logo consists of the letters 'NCID' in a bold, white, sans-serif font. The letters are stylized with thick strokes and sharp angles, giving it a modern, architectural feel. The 'N' and 'C' are connected, as are the 'I' and 'D'.

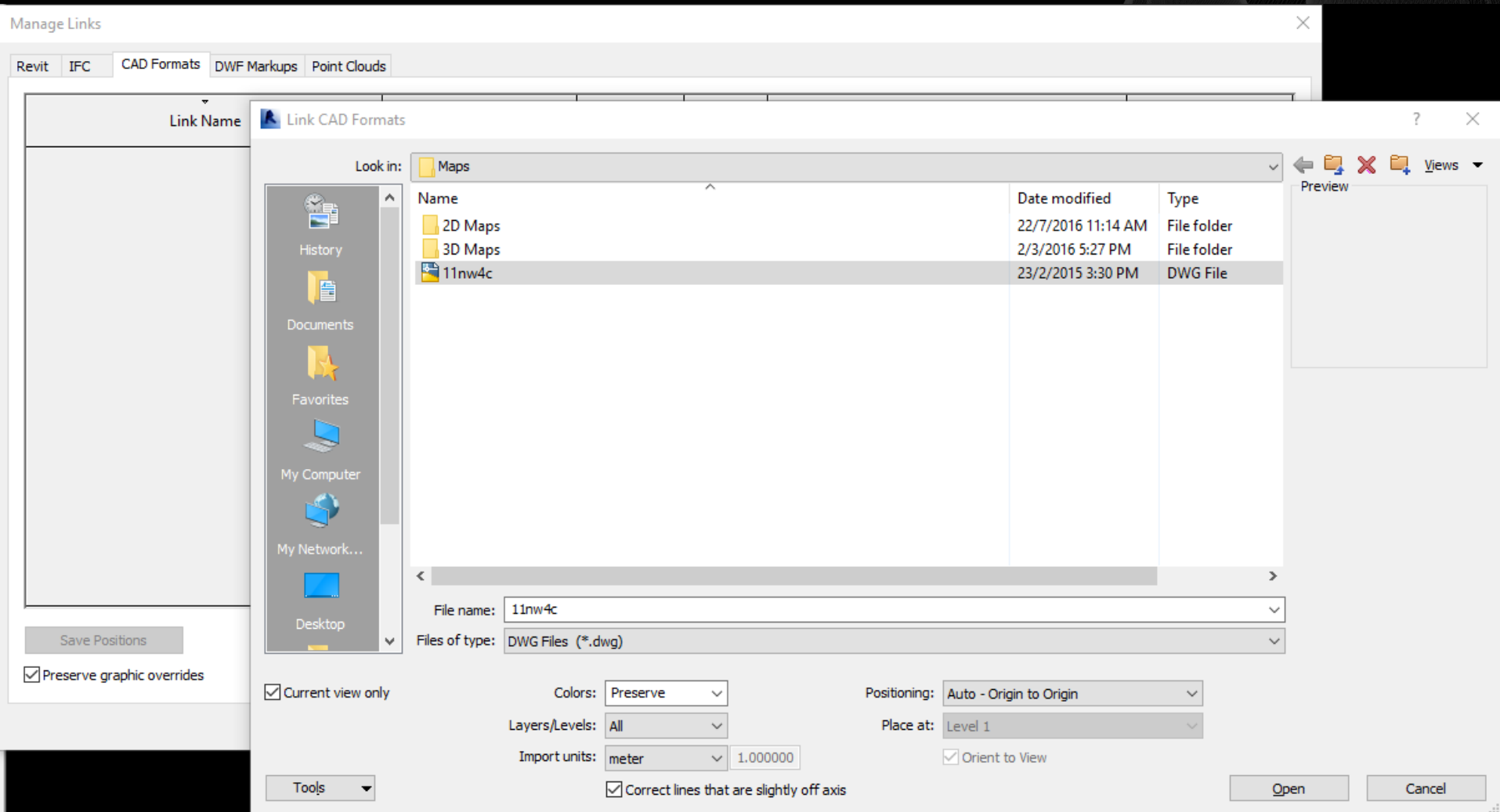
NCID

A DVANCED  
C ONSTRUCTION  
I NFORMATION  
D EVELOPMENT

Set up the project base point and survey point follow Hong Kong 1980 grid system

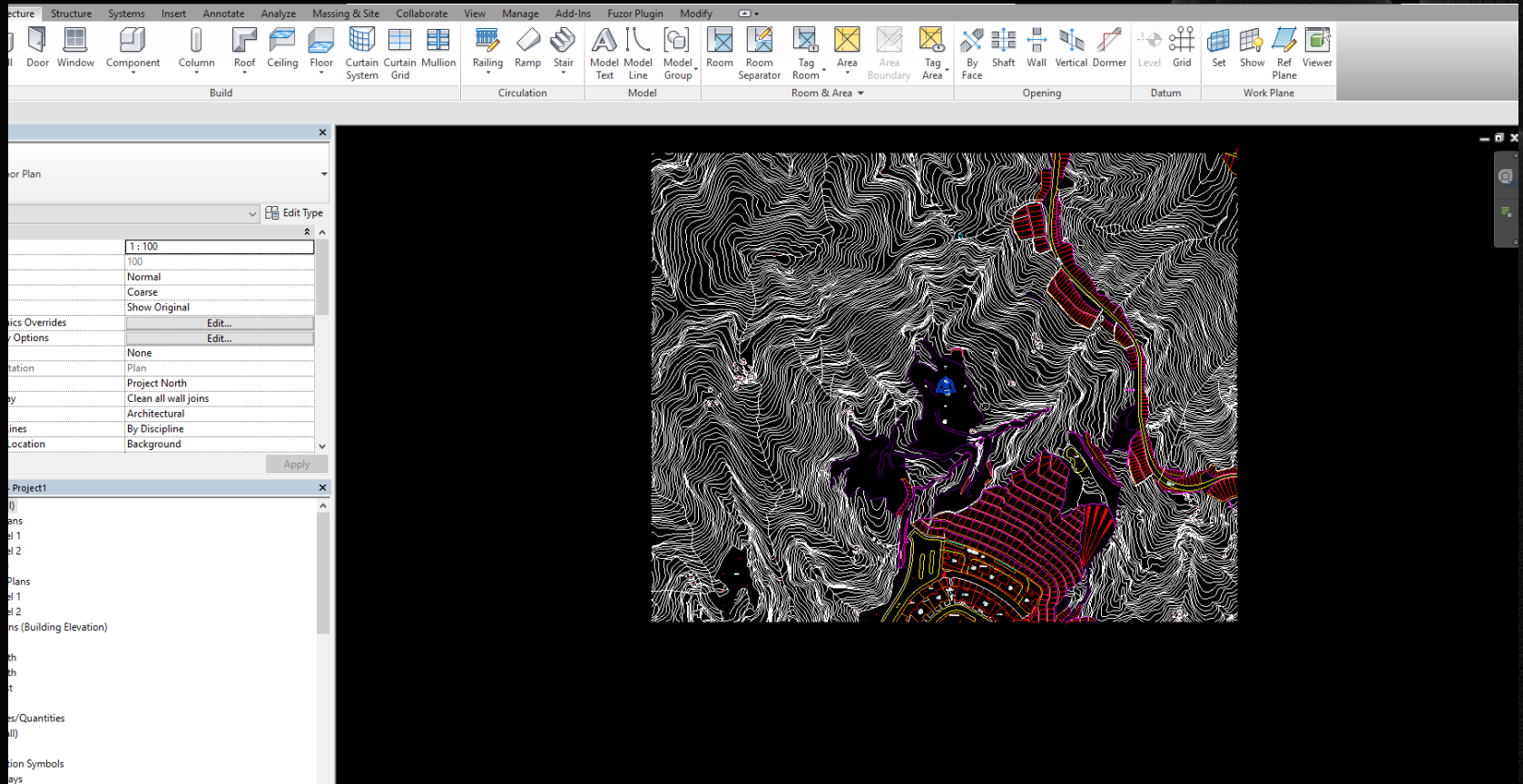


# Link the drawing into revit

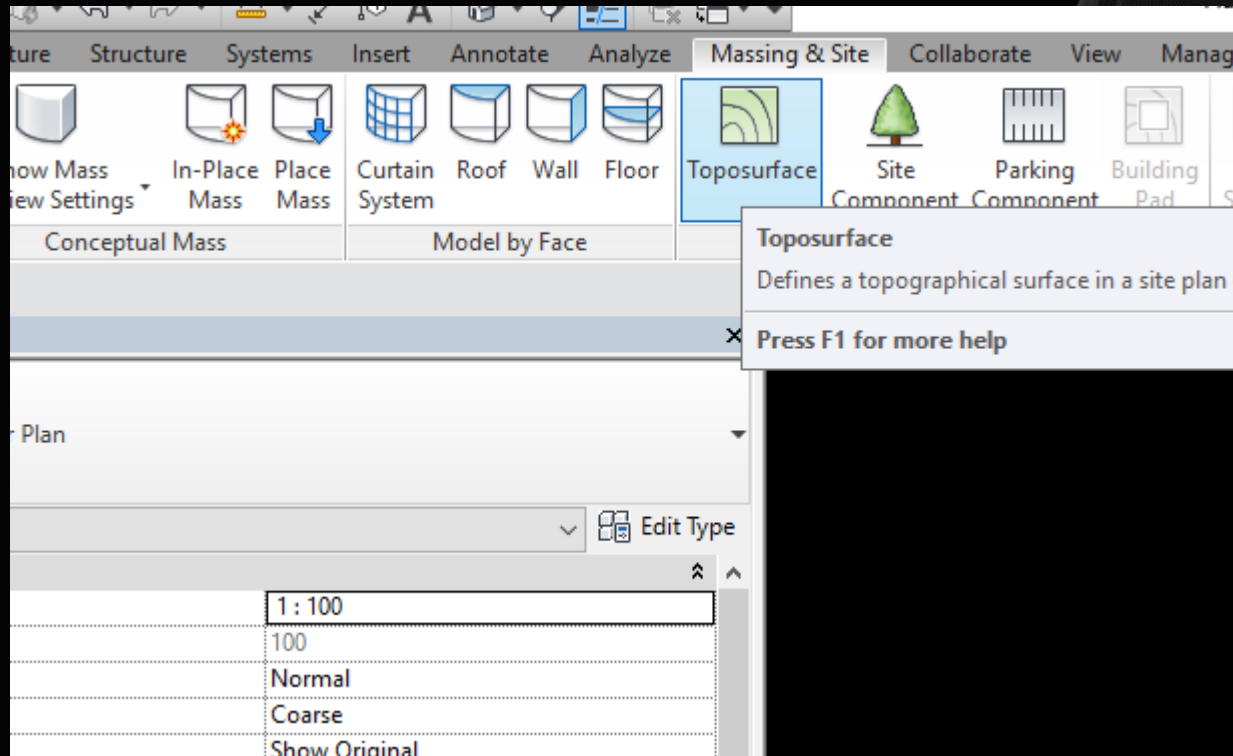




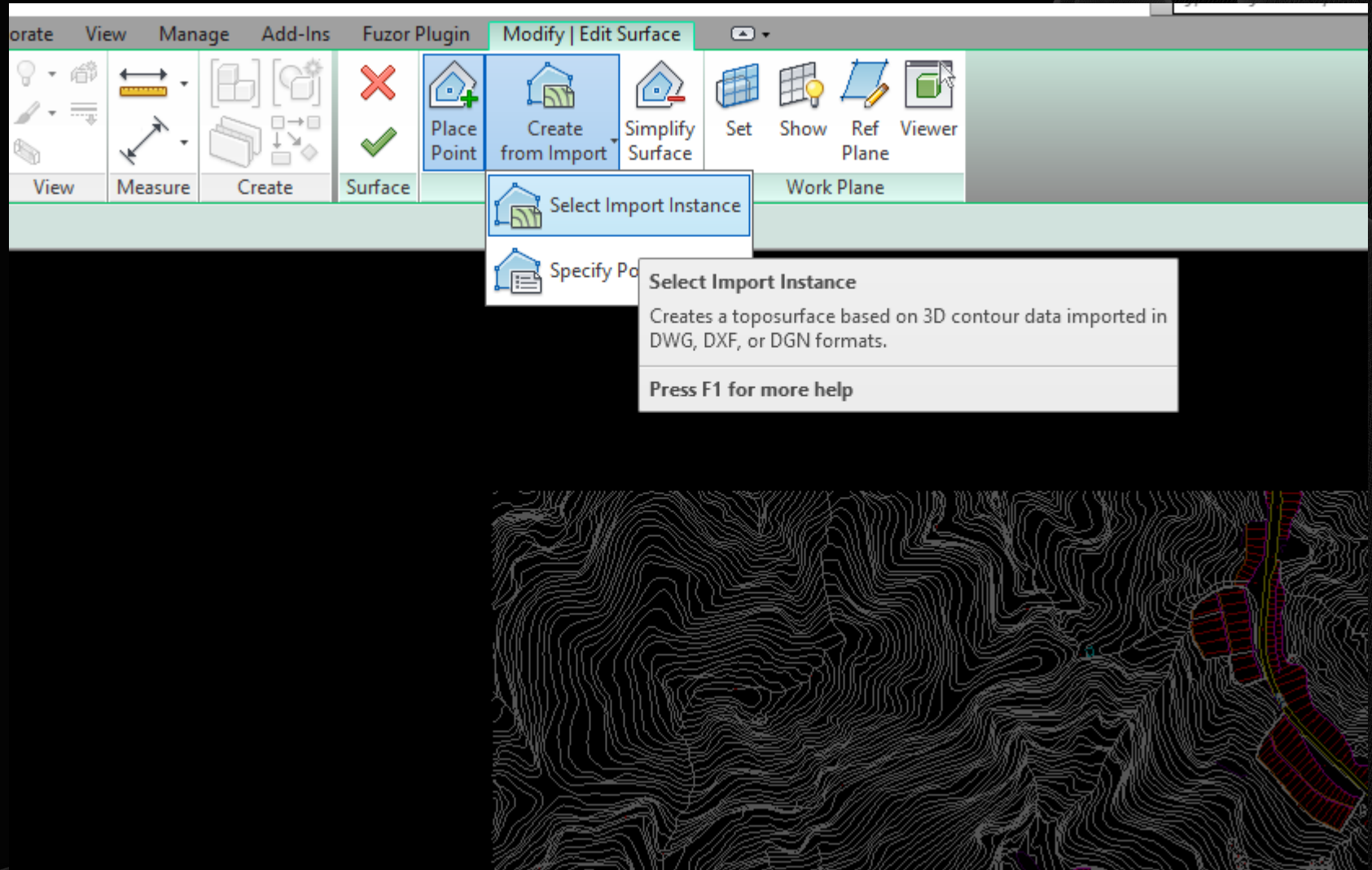
Set up the project base point and survey point follow Hong Kong 1980 grid system



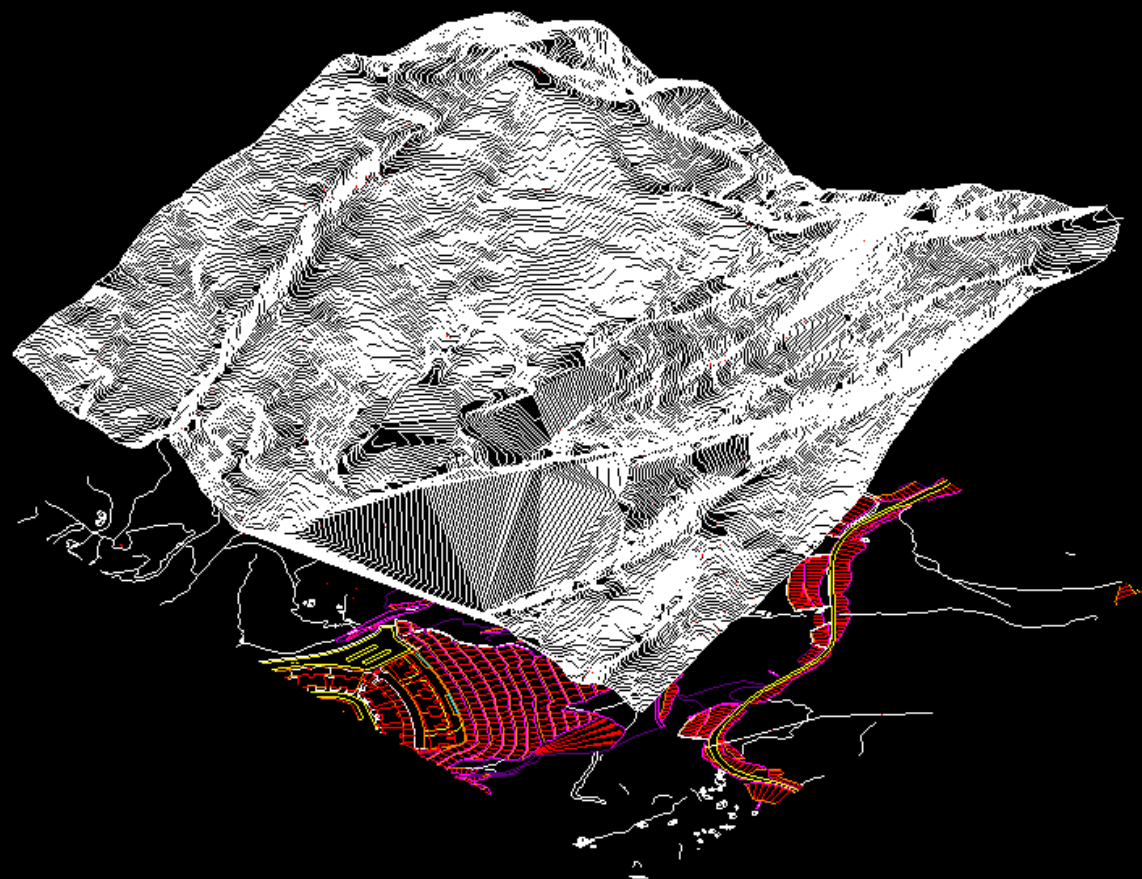
Use the toposurface option to create toposurface



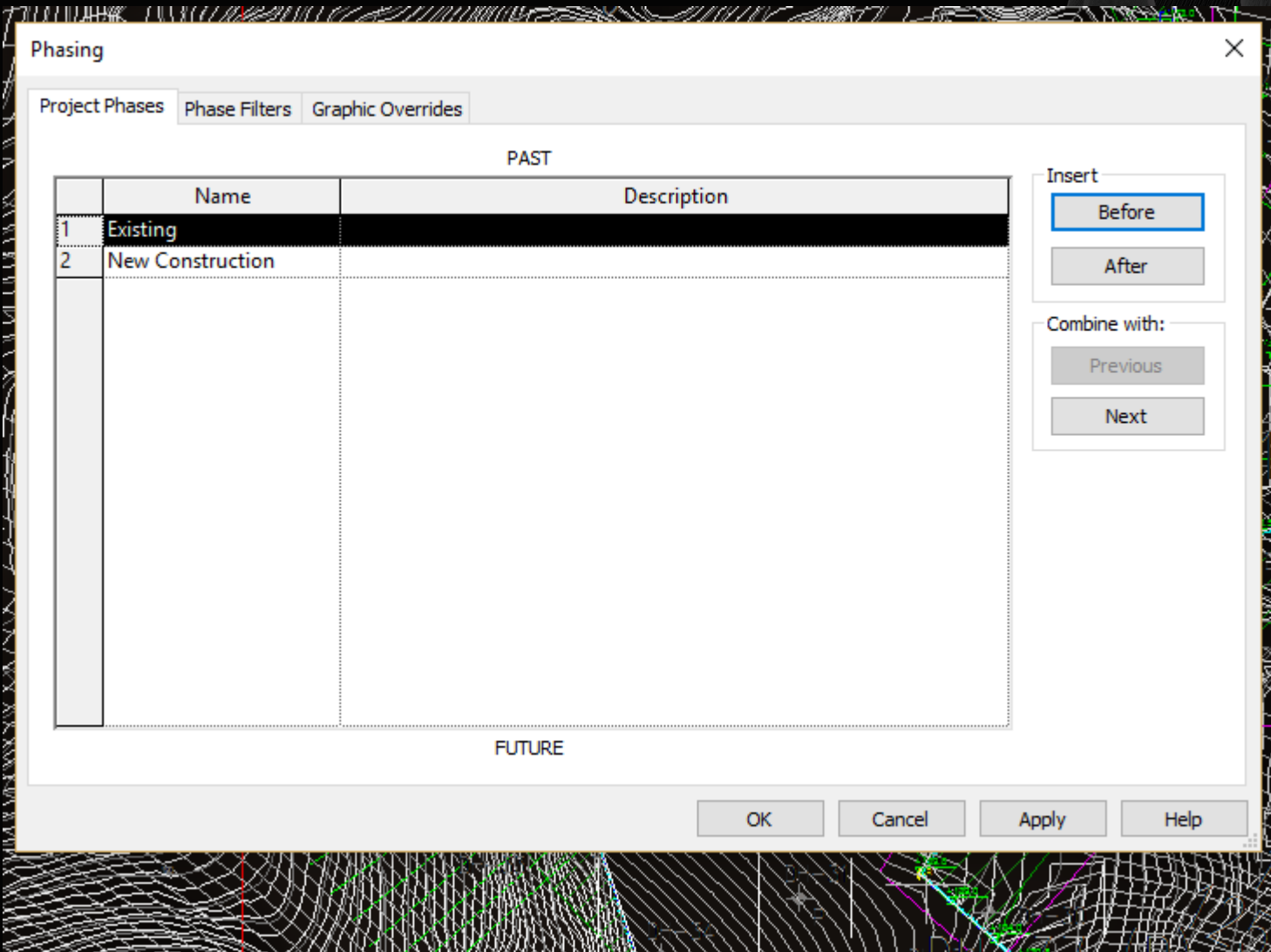
Use the toposurface option to create toposurface





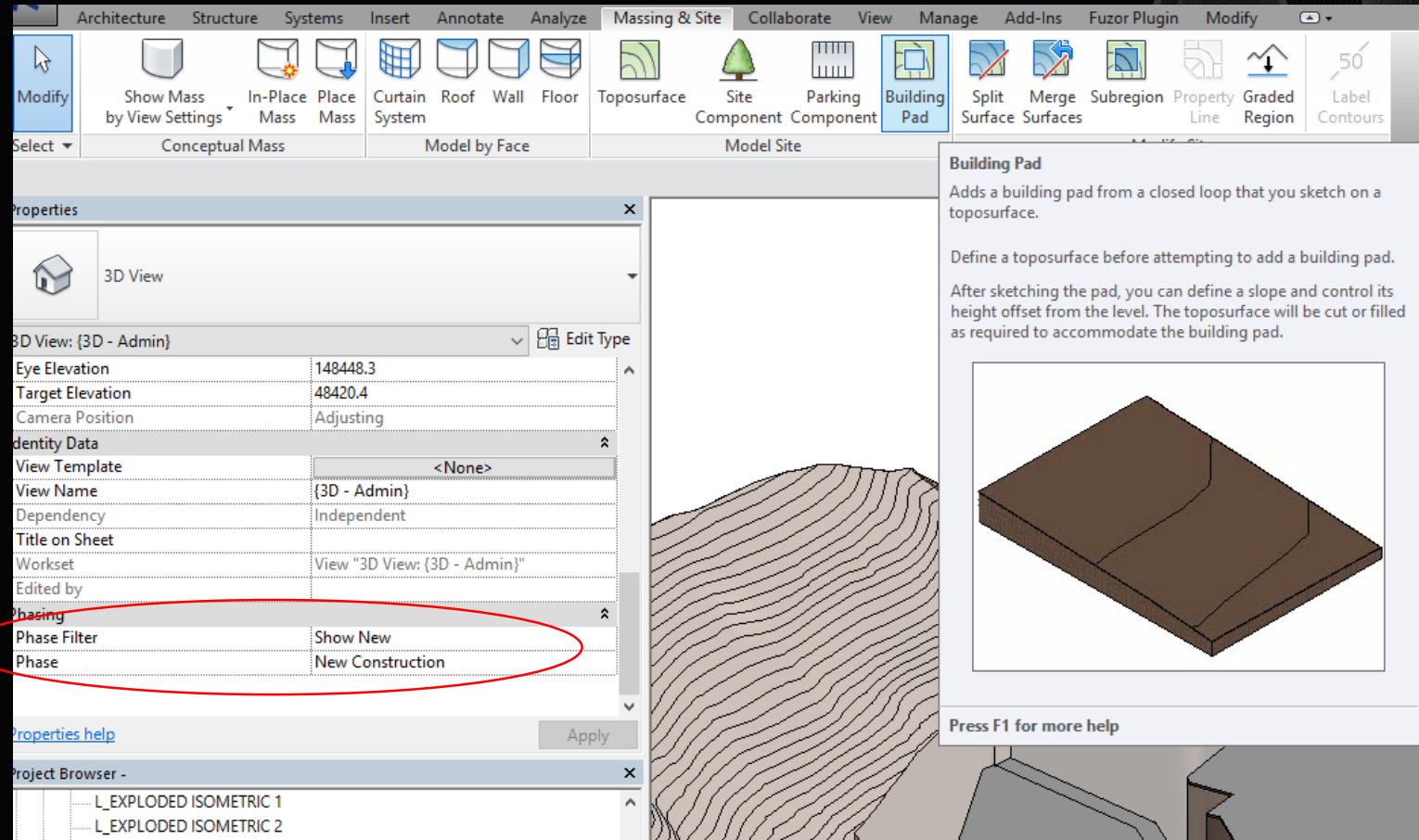


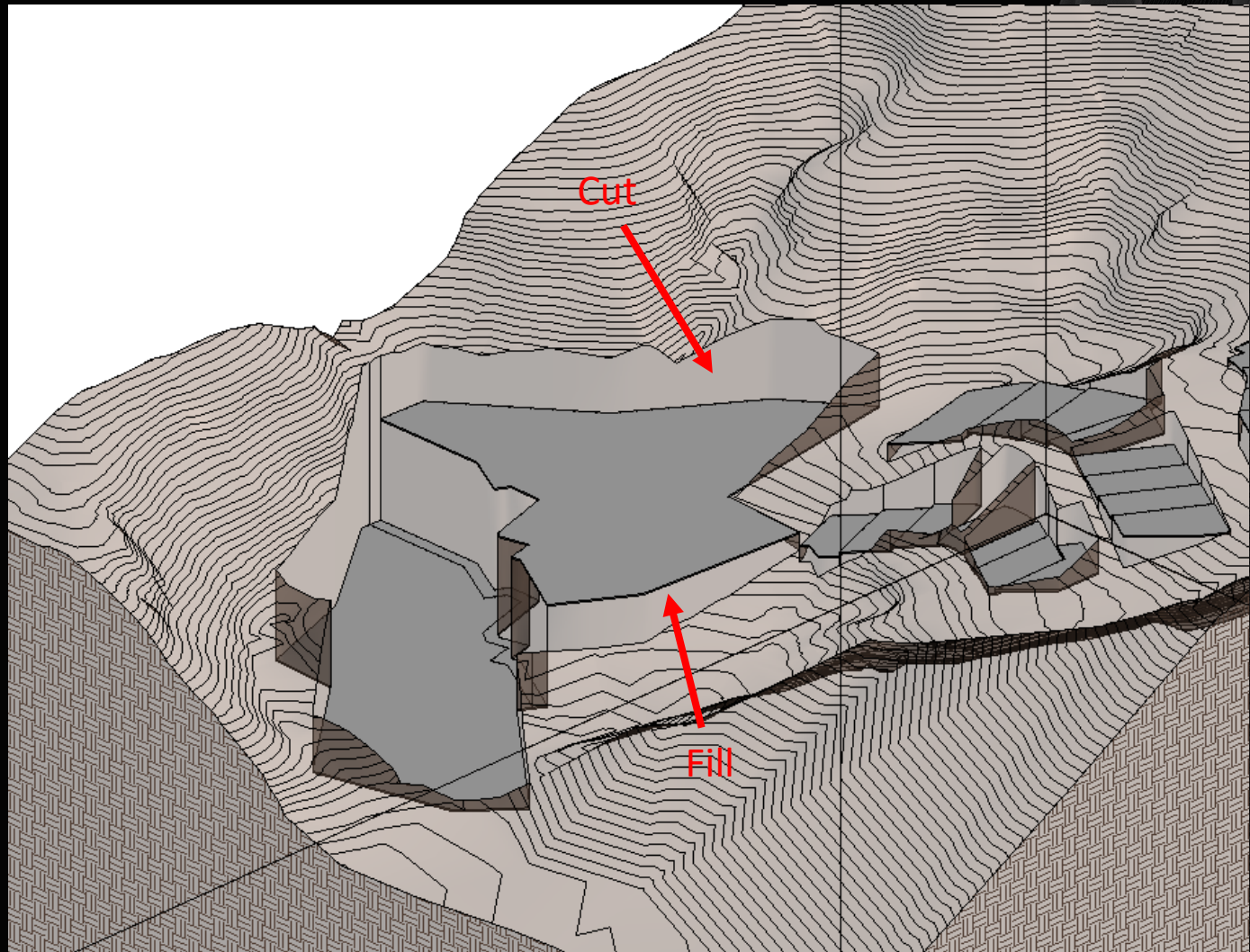
Use phasing option to classify existing phase and New construction phase





The building pad should be used to define cut and fill area under new construction phase  
In order to calculate the cut and fill volume







The phase and phase filter can control what you want to show

The screenshot displays a 3D software interface. On the left, a 'Properties' panel is open, showing settings for a '3D View'. The 'Phase Filter' is set to 'Show All' and the 'Phase' is set to 'New Construction'. A red circle highlights the 'Phase Filter' and 'Phase' settings. Below the properties panel is a 'Project Browser' showing a list of items, including 'EXPLODED ISOMETRIC 5', 'EXPLODED ISOMETRIC 6', 'GROUND LEVEL', 'L\_EXPLODED ISOMETRIC 1', 'L\_EXPLODED ISOMETRIC 2', 'L\_EXPLODED ISOMETRIC 3', 'L\_EXPLODED ISOMETRIC 4', 'L\_EXPLODED ISOMETRIC 5', 'L\_EXPLODED ISOMETRIC 6', 'ROCK LEVEL', '(3D - Admin)', '(3D - Admin) Copy 1', '(3D - user)', '(3D - wingong)', '(3D)', and 'Elevations (Building Elevation)'. The main 3D view on the right shows a terrain with contour lines and several buildings. The buildings are colored in shades of gray and blue, indicating different phases or materials. The terrain is rendered with a hatched pattern, and the buildings are shown in a 3D perspective view.

Properties

3D View

3D View: {3D - Admin} Edit Type

Eye Elevation	177296.3
Target Elevation	49250.4
Camera Position	Adjusting

Identity Data

View Template	<None>
View Name	{3D - Admin}
Dependency	Independent
Title on Sheet	
Workset	View "3D View: {3D - Admin}"
Edited by	wingong

Phasing

Phase Filter	Show All
Phase	New Construction

Properties help Apply

Project Browser - NKIL\_ACD\_M3\_Contour\_wingong

- EXPLODED ISOMETRIC 5
- EXPLODED ISOMETRIC 6
- GROUND LEVEL
- L\_EXPLODED ISOMETRIC 1
- L\_EXPLODED ISOMETRIC 2
- L\_EXPLODED ISOMETRIC 3
- L\_EXPLODED ISOMETRIC 4
- L\_EXPLODED ISOMETRIC 5
- L\_EXPLODED ISOMETRIC 6
- ROCK LEVEL
- (3D - Admin)
- (3D - Admin) Copy 1
- (3D - user)
- (3D - wingong)
- (3D)
- Elevations (Building Elevation)
  - East
  - North



The building pad should be used to define cut and fill area In order to calculate the cut and fill volume

<CUT AND FILL SCHEDULE>			
A	B	C	D
Name	Cut	Fill	Net cut/fill
Building Pad 128.1	89766.28 m <sup>2</sup>	0.00 m <sup>2</sup>	-89766.28 m <sup>2</sup>
Building Pad 129.6	52388.25 m <sup>2</sup>	0.00 m <sup>2</sup>	-52388.25 m <sup>2</sup>
Building Pad (Slop)	5383.86 m <sup>2</sup>	0.00 m <sup>2</sup>	-5383.86 m <sup>2</sup>
H1	0.00 m <sup>2</sup>	12829.57 m <sup>2</sup>	12829.57 m <sup>2</sup>
H2	0.99 m <sup>2</sup>	1540.68 m <sup>2</sup>	1539.69 m <sup>2</sup>
H3	322.57 m <sup>2</sup>	597.32 m <sup>2</sup>	274.75 m <sup>2</sup>
H4	555.67 m <sup>2</sup>	317.85 m <sup>2</sup>	-237.82 m <sup>2</sup>
H5	320.11 m <sup>2</sup>	396.49 m <sup>2</sup>	76.38 m <sup>2</sup>
H6	100.66 m <sup>2</sup>	604.80 m <sup>2</sup>	504.14 m <sup>2</sup>
H7	64.09 m <sup>2</sup>	519.90 m <sup>2</sup>	455.81 m <sup>2</sup>
H8	75.76 m <sup>2</sup>	341.93 m <sup>2</sup>	266.18 m <sup>2</sup>
H9	118.69 m <sup>2</sup>	500.14 m <sup>2</sup>	381.44 m <sup>2</sup>
H10	446.47 m <sup>2</sup>	77.97 m <sup>2</sup>	-368.50 m <sup>2</sup>
H11	358.78 m <sup>2</sup>	110.05 m <sup>2</sup>	-248.73 m <sup>2</sup>
H12	307.47 m <sup>2</sup>	163.24 m <sup>2</sup>	-144.23 m <sup>2</sup>
H13	237.83 m <sup>2</sup>	318.27 m <sup>2</sup>	80.44 m <sup>2</sup>
H14	245.48 m <sup>2</sup>	371.02 m <sup>2</sup>	125.54 m <sup>2</sup>
H15	276.46 m <sup>2</sup>	301.88 m <sup>2</sup>	25.42 m <sup>2</sup>
H16	985.19 m <sup>2</sup>	7.99 m <sup>2</sup>	-977.20 m <sup>2</sup>
H17	736.52 m <sup>2</sup>	40.41 m <sup>2</sup>	-696.11 m <sup>2</sup>
H18	423.65 m <sup>2</sup>	193.23 m <sup>2</sup>	-230.42 m <sup>2</sup>
H19	176.54 m <sup>2</sup>	382.37 m <sup>2</sup>	205.83 m <sup>2</sup>
H20	100.54 m <sup>2</sup>	520.46 m <sup>2</sup>	419.92 m <sup>2</sup>
H21	75.79 m <sup>2</sup>	508.42 m <sup>2</sup>	432.63 m <sup>2</sup>
H22	57.18 m <sup>2</sup>	251.52 m <sup>2</sup>	194.34 m <sup>2</sup>
H23	447.02 m <sup>2</sup>	14.94 m <sup>2</sup>	-432.08 m <sup>2</sup>
H24	1413.82 m <sup>2</sup>	0.00 m <sup>2</sup>	-1413.82 m <sup>2</sup>
H25	1070.35 m <sup>2</sup>	0.00 m <sup>2</sup>	-1070.35 m <sup>2</sup>
H26	617.03 m <sup>2</sup>	0.00 m <sup>2</sup>	-617.03 m <sup>2</sup>
H27	299.07 m <sup>2</sup>	30.22 m <sup>2</sup>	-268.84 m <sup>2</sup>
H28	122.06 m <sup>2</sup>	190.70 m <sup>2</sup>	68.64 m <sup>2</sup>
H29	25.62 m <sup>2</sup>	407.21 m <sup>2</sup>	381.59 m <sup>2</sup>
H30	262.03 m <sup>2</sup>	62.49 m <sup>2</sup>	-199.54 m <sup>2</sup>
H31	647.61 m <sup>2</sup>	7.26 m <sup>2</sup>	-640.34 m <sup>2</sup>
H32	938.61 m <sup>2</sup>	0.00 m <sup>2</sup>	-938.61 m <sup>2</sup>
H33	1187.99 m <sup>2</sup>	0.00 m <sup>2</sup>	-1187.99 m <sup>2</sup>
H34	795.08 m <sup>2</sup>	0.00 m <sup>2</sup>	-795.08 m <sup>2</sup>
H35	771.66 m <sup>2</sup>	0.00 m <sup>2</sup>	-771.66 m <sup>2</sup>
H36	685.46 m <sup>2</sup>	0.00 m <sup>2</sup>	-685.46 m <sup>2</sup>
Grand total: 39	162808.24 m <sup>2</sup>	21608.33 m <sup>2</sup>	-141199.91 m <sup>2</sup>

! Thank you !