



NCID

A DVANCED
C ONSTRUCTION
I NFORMATION
D EVELOPMENT

| Typical Floor Study



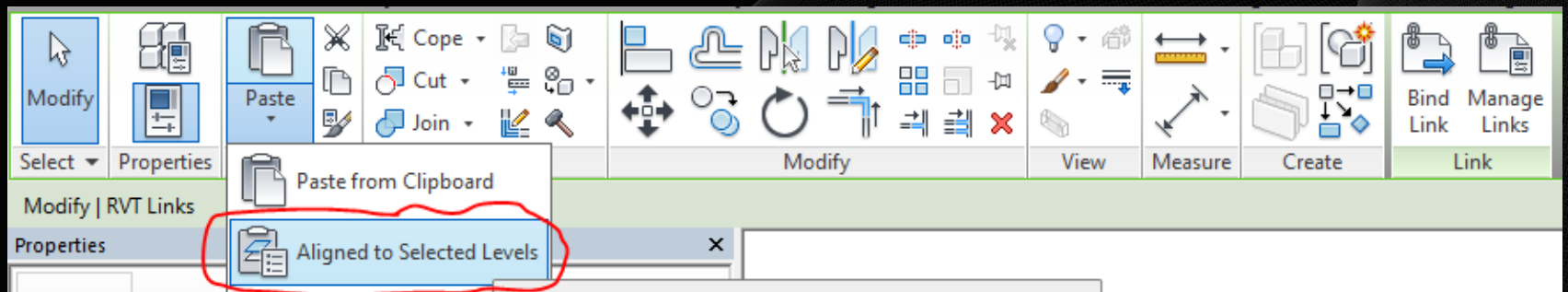
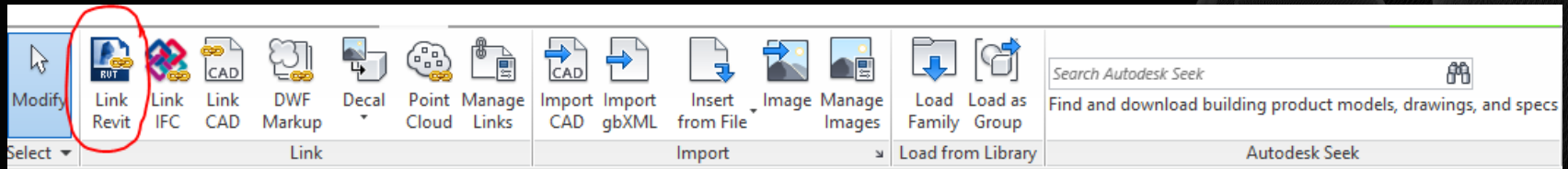
Create Multiple Floors

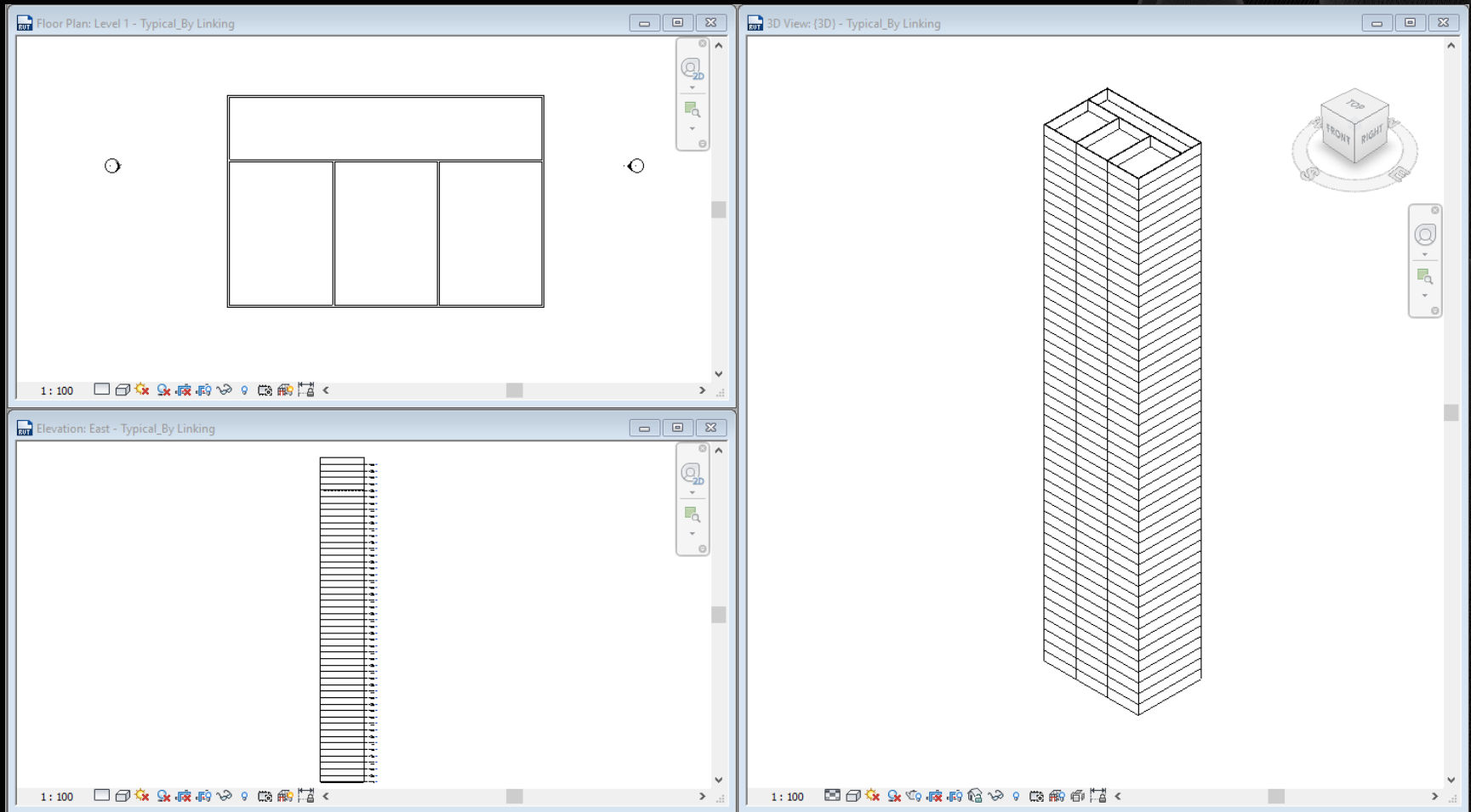
■ Linking Revit Model & Grouping Comparison



| Create Multiple Floors by Linking Revit Model

- Link the Single Floor into Live File
- Copy to Clip Board up to 50 storeys high





- Run the Floor Area Schedule by adding Level, Area and RVT Link: Name
- Although all Levels in schedule are shown Level, you can change the RVT Link: Name to represent the field of Stories

Schedule Properties

Fields Filter Sorting/Grouping Formatting Appearance

Available fields:

RVT Link: File Name

Add -->

<-- Remove

Add Parameter...

Calculated Value...

Scheduled fields (in order):

Level

Area

RVT Link: Name

Edit...

Delete

Select available fields from:

RVT Links

Floors

Structural Material

Analytical

Project Information

RVT Links

OK Cancel Help

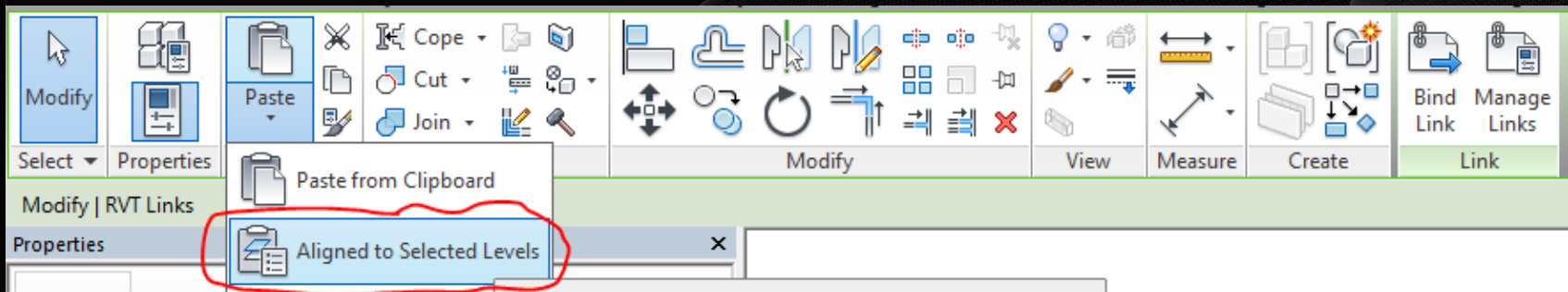
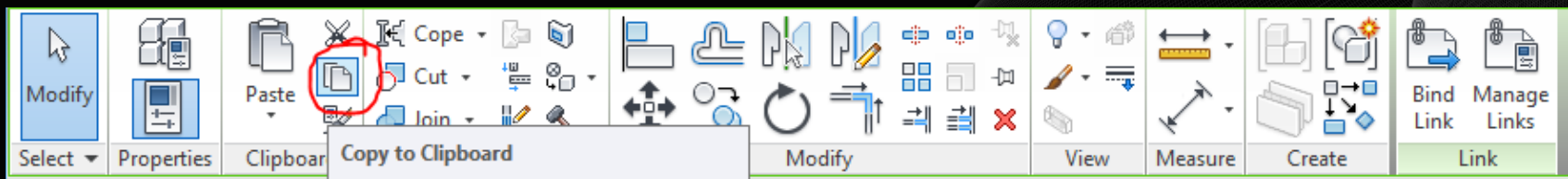
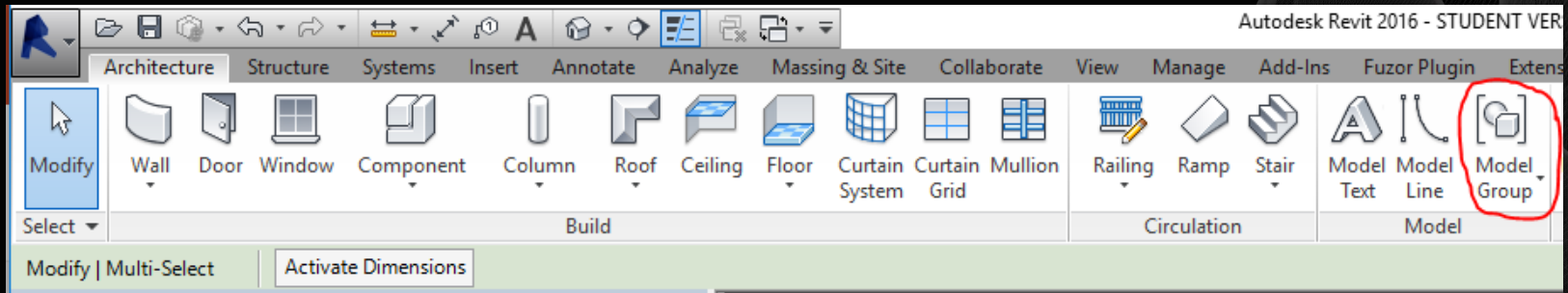
<Floor Schedule>		
A	B	C
Level	RVT Link: Name	Area
Level 1	1	600 m²
Level 1	2	600 m²
Level 1	3	600 m²
Level 1	4	600 m²
Level 1	5	600 m²
Level 1	6	600 m²
Level 1	7	600 m²
Level 1	8	600 m²
Level 1	9	600 m²
Level 1	10	600 m²
Level 1	11	600 m²
Level 1	12	600 m²
Level 1	13	600 m²
Level 1	14	600 m²
Level 1	15	600 m²
Level 1	16	600 m²
Level 1	17	600 m²
Level 1	18	600 m²
Level 1	19	600 m²
Level 1	20	600 m²
Level 1	21	600 m²
Level 1	22	600 m²
Level 1	23	600 m²
Level 1	24	600 m²
Level 1	25	600 m²
Level 1	26	600 m²
Level 1	27	600 m²
Level 1	28	600 m²
Level 1	29	600 m²
Level 1	30	600 m²
Level 1	31	600 m²
Level 1	32	600 m²
Level 1	33	600 m²
Level 1	34	600 m²
Level 1	35	600 m²
Level 1	36	600 m²
Level 1	37	600 m²
Level 1	38	600 m²
Level 1	39	600 m²
Level 1	40	600 m²
Level 1	41	600 m²
Level 1	42	600 m²
Level 1	43	600 m²
Level 1	44	600 m²

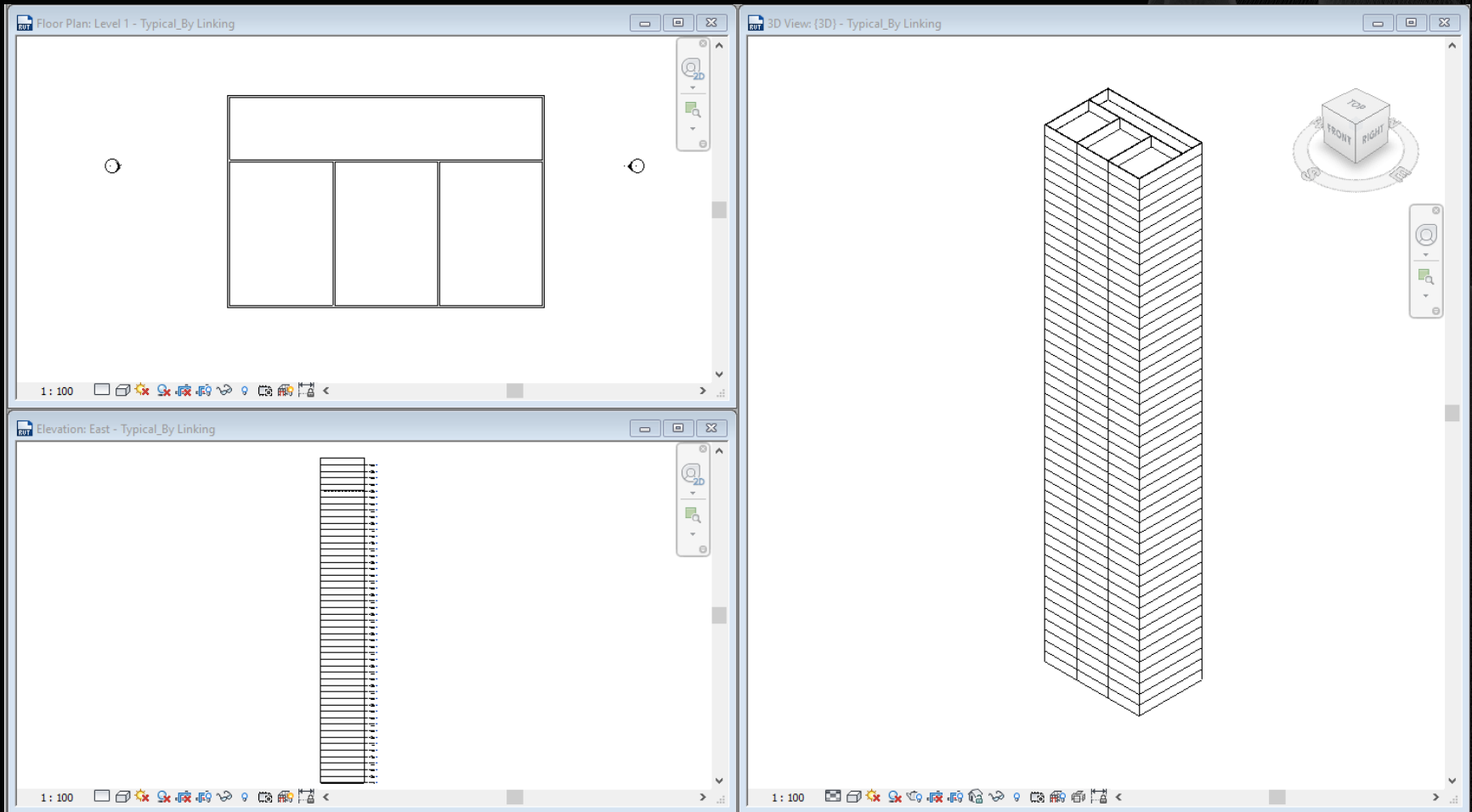
<Floor Schedule>	
A	B
Storeys	Area
1	600 m²
2	600 m²
3	600 m²
4	600 m²
5	600 m²
6	600 m²
7	600 m²
8	600 m²
9	600 m²
10	600 m²
11	600 m²
12	600 m²
13	600 m²
14	600 m²
15	600 m²
16	600 m²
17	600 m²
18	600 m²
19	600 m²
20	600 m²
21	600 m²
22	600 m²
23	600 m²
24	600 m²
25	600 m²
26	600 m²
27	600 m²
28	600 m²
29	600 m²
30	600 m²
31	600 m²
32	600 m²
33	600 m²
34	600 m²
35	600 m²
36	600 m²
37	600 m²
38	600 m²
39	600 m²
40	600 m²
41	600 m²
42	600 m²
43	600 m²
44	600 m²



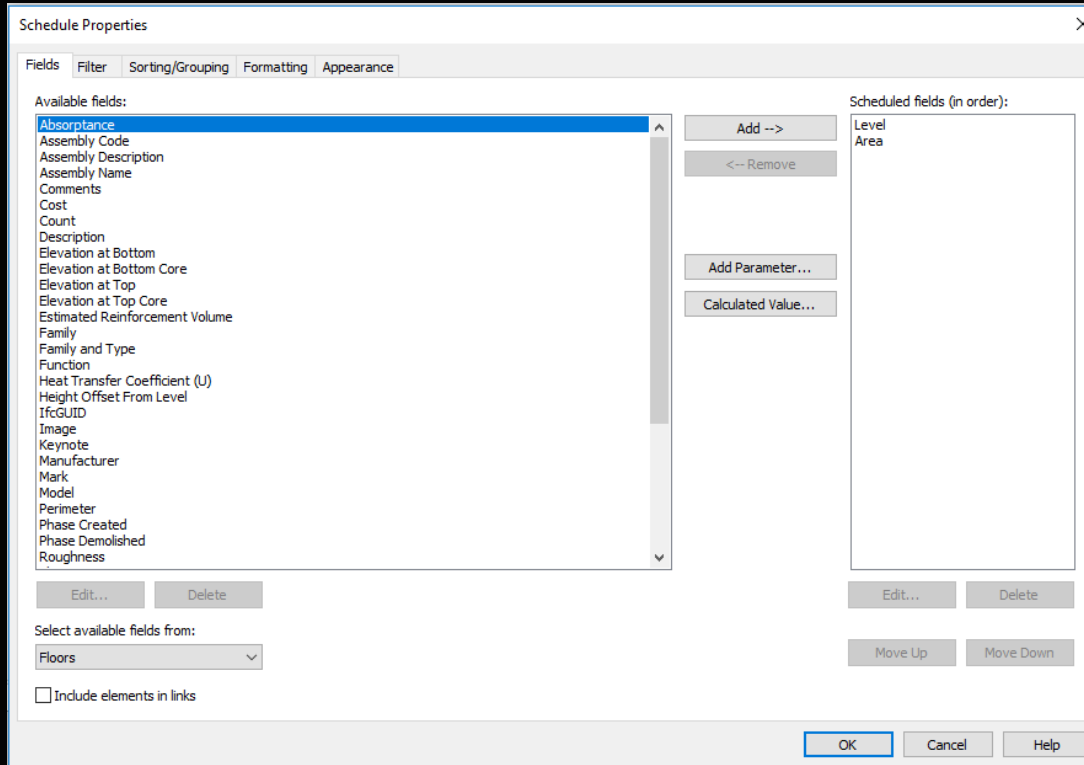
| Create Multiple Floors by Grouping

- Draw a single floor on the Live File and create Model Group
- Copy to Clip Board up to 50 stories high





Run the Floor Area Schedule by adding Level and Area



<Floor Schedule>	
A	B
Level	Area
Level 1	600 m²
Level 2	600 m²
Level 3	600 m²
Level 4	600 m²
Level 5	600 m²
Level 6	600 m²
Level 7	600 m²
Level 8	600 m²
Level 9	600 m²
Level 10	600 m²
Level 11	600 m²
Level 12	600 m²
Level 13	600 m²
Level 14	600 m²
Level 15	600 m²
Level 16	600 m²
Level 17	600 m²
Level 18	600 m²
Level 19	600 m²
Level 20	600 m²
Level 21	600 m²
Level 22	600 m²
Level 23	600 m²
Level 24	600 m²
Level 25	600 m²
Level 26	600 m²
Level 27	600 m²
Level 28	600 m²
Level 29	600 m²
Level 30	600 m²
Level 31	600 m²
Level 32	600 m²
Level 33	600 m²
Level 34	600 m²
Level 35	600 m²
Level 36	600 m²
Level 37	600 m²
Level 38	600 m²
Level 39	600 m²
Level 40	600 m²
Level 41	600 m²
Level 42	600 m²
Level 43	600 m²
Level 44	600 m²

- Both of “Link Revit Model” and “Grouping” can achieve the purpose of Create Multiple Floors

Link Revit Model

Advantage: Smaller file size

Disadvantage: Need to go back to original file to modify

Grouping

Advantage: Easily to modify in a single file

Disadvantage: Bigger file size

! Thank you !