

Mandatory BIM use in Hong Kong for government capital works >30M

BIM Training Course 2019

Mandatory BIM use have implied from design to construction stage including **2D Drawing Production, 4D Simulation & Digital Fabrication generated from BIM.**

	CITF	RTTP
CEIII BIM Management	✓	✓
CEIII Archi DWG Production (Revit)		✓
CEIII GBP Submission (Revit)	✓	✓
CEIII GBP Submission (ArchiCAD)		✓
CEIII STR Submission (Revit)	✓	✓
CEIII Architecture	✓	✓
CEIII Structure	✓	✓
CEIII MEP	✓	✓
CEIII Cost Management	✓	
CEIII Construction Management	✓	
CEII BIM Model Audit	✓	✓
CEII BIM Application using Dynamo		✓
CEII Multi-Discipline Collaboration	✓	✓
CEII Families (Revit)	✓	✓
CEII Architecture (Revit)	✓	
CEII Architecture (ArchiCAD)	✓	✓
CEII Structure (Revit)	✓	
CEII MEP (Revit)	✓	
CEI Basic (Revit) (ArchiCAD)	✓	

A.C.I.D. courses have granted by **CITF & RTTP** with financial support.

1. Identify Client Training need
2. Proceeding application fund
3. Offer Professional Training

Professional Recognition

CIC CERTIFIED BIM MANAGER



**CIC CERTIFIED
BIM MANAGER**
建造業議會認可建築信息模擬經理

HKIA CORPORATE MEMBER



香港建築師學會
The Hong Kong Institute of Architects

BSI: 1192 (UK)



KM 697940
PAS 1192-2:2013

CIC BIM Assessment Panel Member

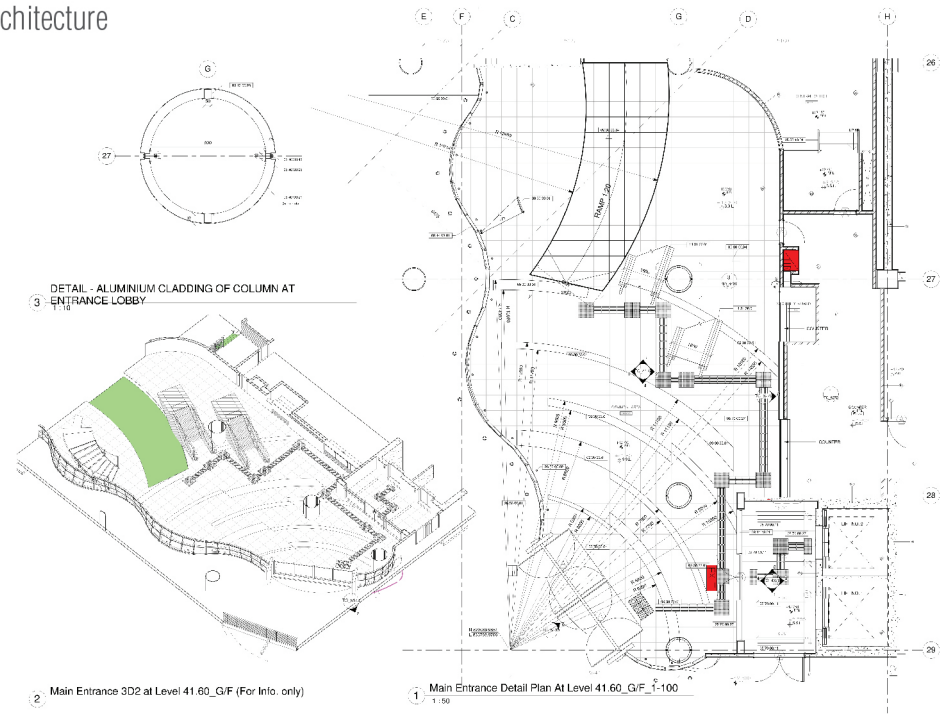


CONSTRUCTION
INDUSTRY COUNCIL
建造業議會

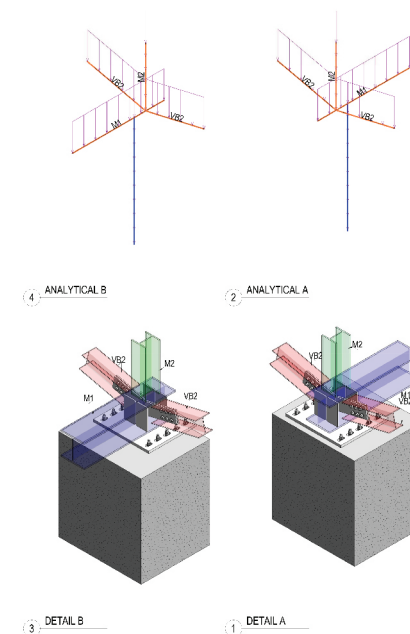
NCID

Advanced
Construction
Information
Development Ltd.

Architecture



Structure



MEP

