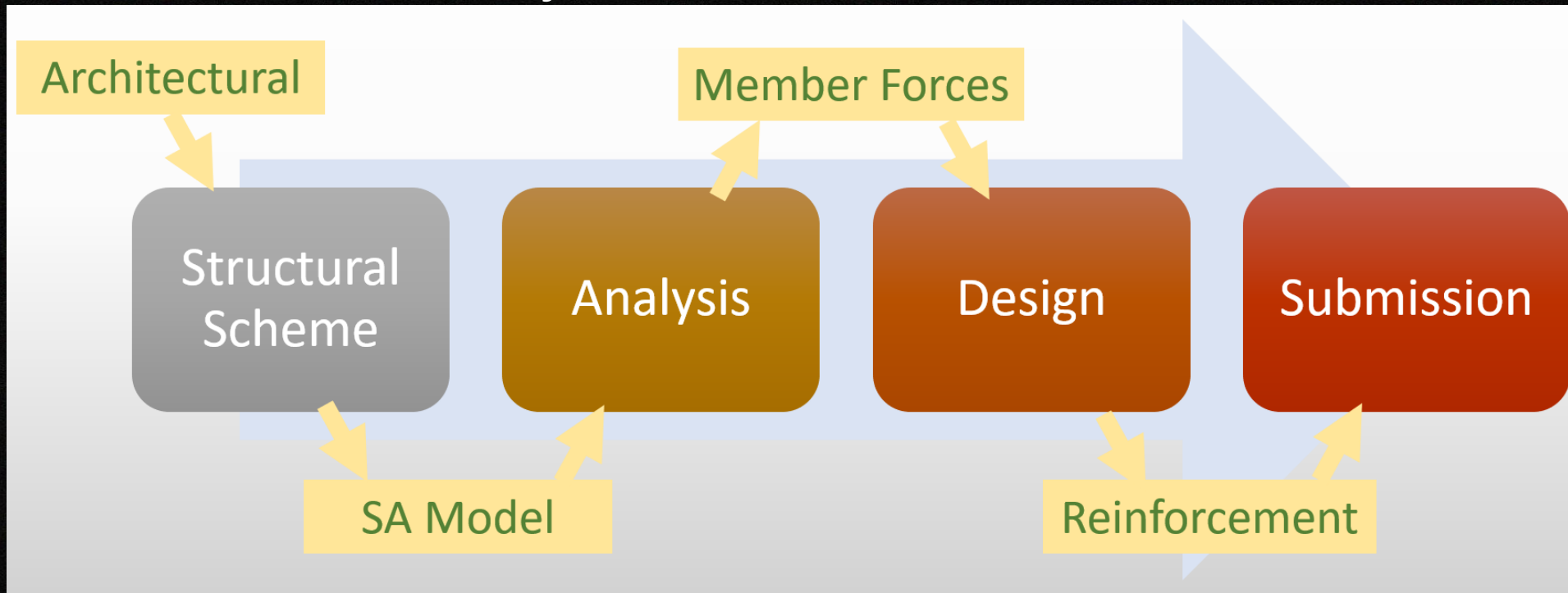




Advanced
Construction
Information
Development Ltd.

Automatic Structural Design (ASD)

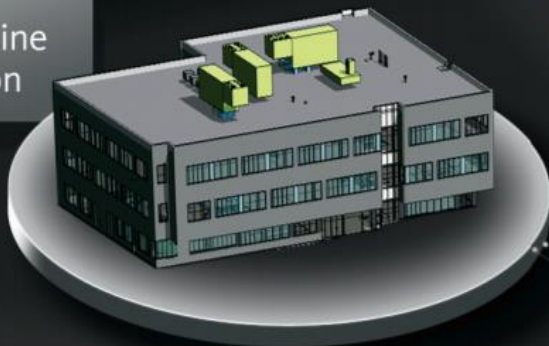
Traditional Structural Analysis



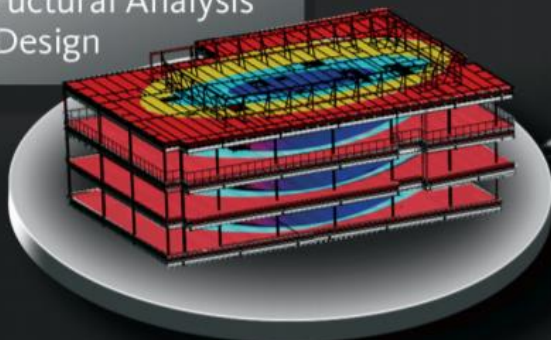
Problems occur when manually linking the Structural Analysis and Design processes:

1. Human Error when transferring information. (e.g. pile load 100,000kN as 10,000kN!)
2. Inconsistent information across processes. (e.g. plans not match with details.)
3. Repeat updating of same changes **MANUALLY**.
e.g. change of column size :
Update SA Model
Update Design Model
Update Drawings

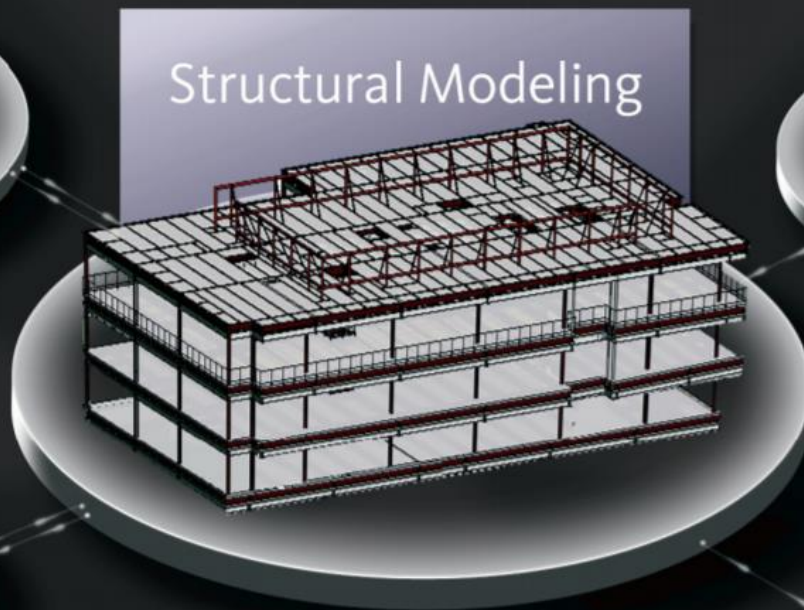
Multidiscipline
Coordination



Structural Analysis
& Design



Structural Modeling

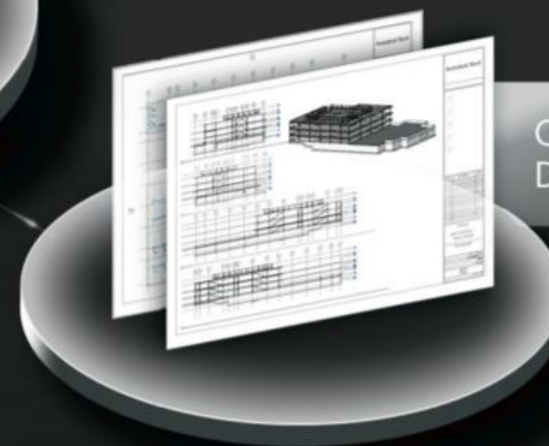


Autodesk® Revit® Structure

Fabrication
Drawings



Construction
Documentation



Autodesk® Robot™ Structural Analysis Professional
Autodesk Structural Engineering Partner Solutions

AutoCAD® Structural Detailing

BIM-Integrated Structural Analysis and Design Workflow

BIM enables **DIGITALLY** linking the Structural Analysis and Design processes:

BIM Platform

Task:

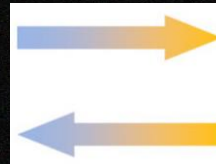
- Create Structure model
- Quantity Take-Off
- Drawing Generation



Advantages:

- Link with Architectural and MEP Models
- Coordination Review
- Structural Element Analytical Models
- Model = Drawings

Linked
Digitally



100%
Compatible

Structural Analysis Program

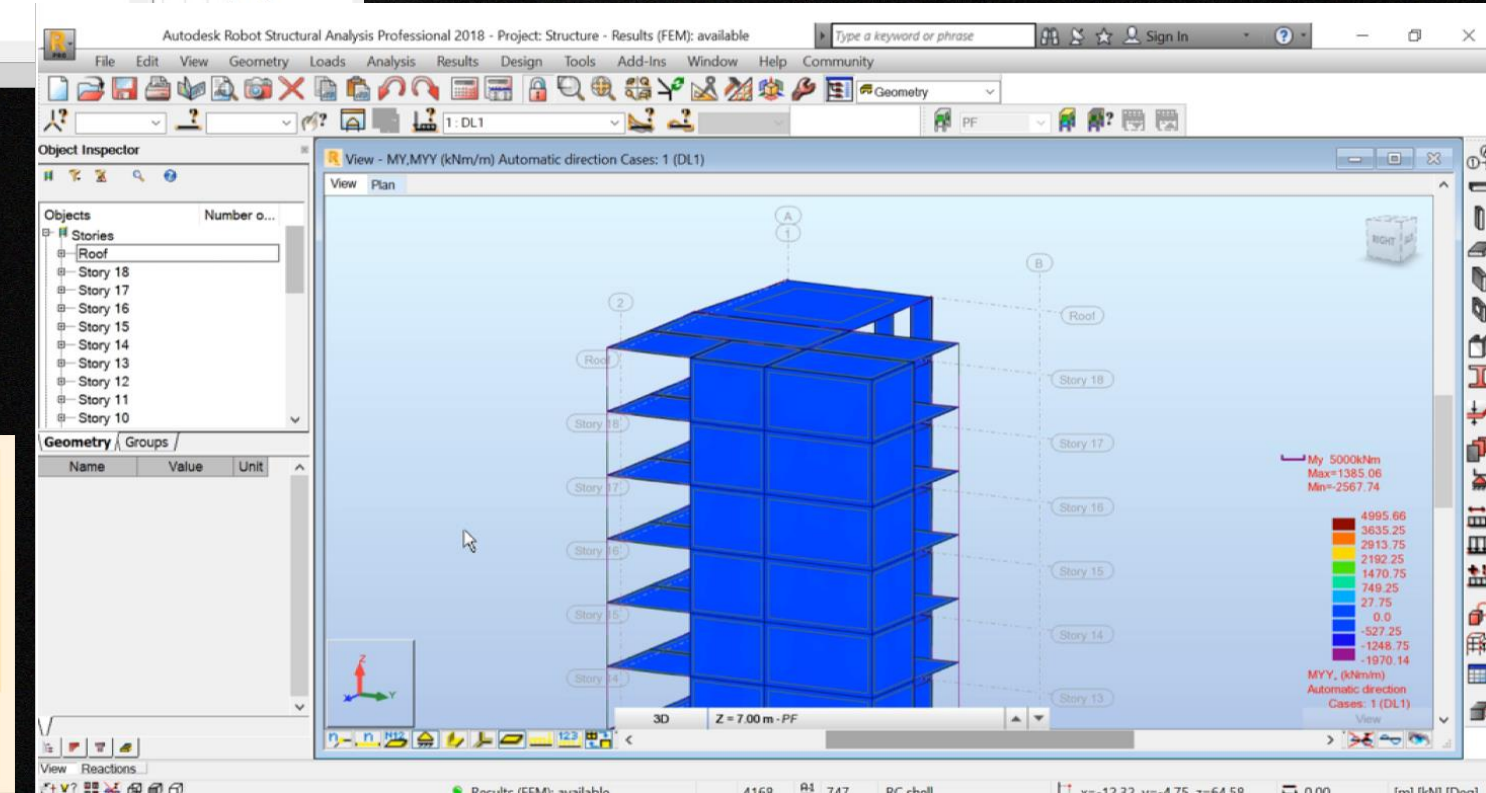
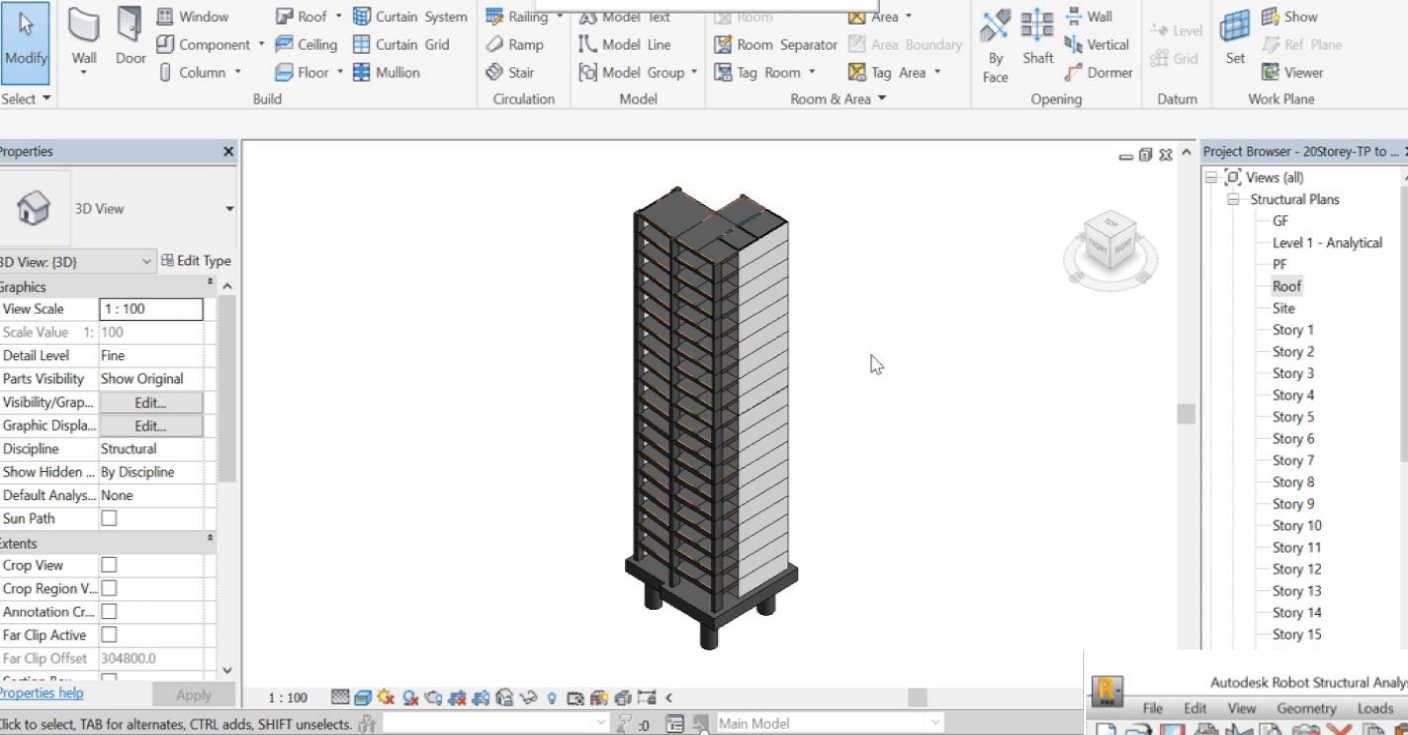
Task:

- Static Linear/Non-linear analysis
- Design and Detailing
- Reports



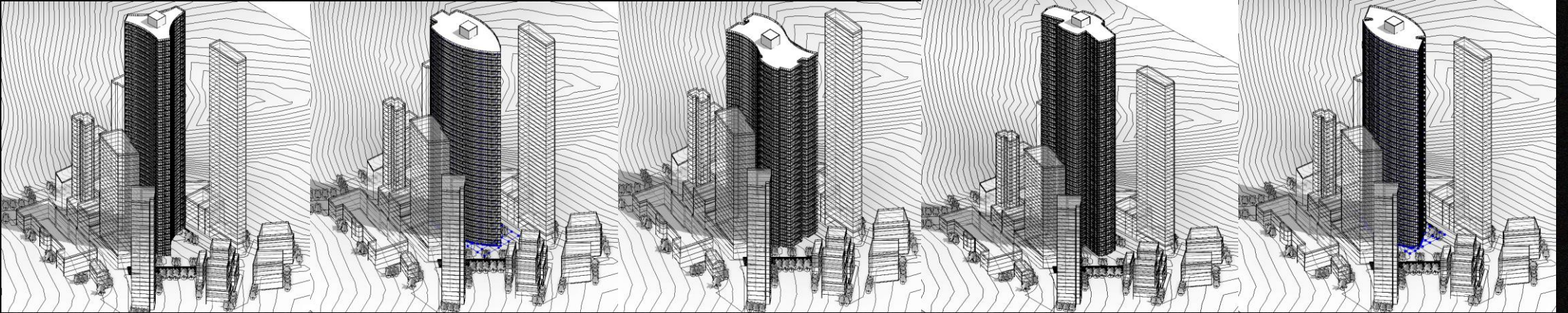
Advantages:

- Wide range of analysis capabilities
- Exchange data with Revit (analysis results and reinforcement) and other design tools
- Variety of ways to present results

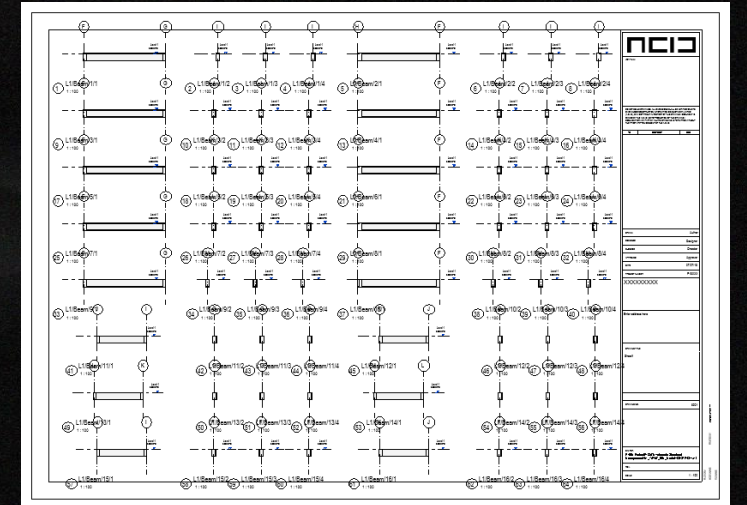
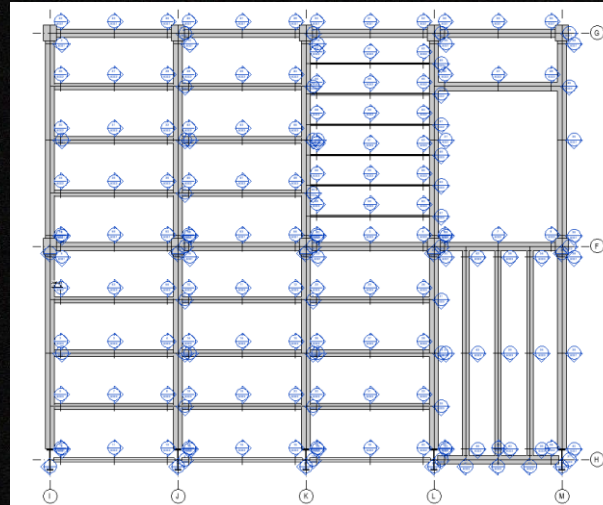
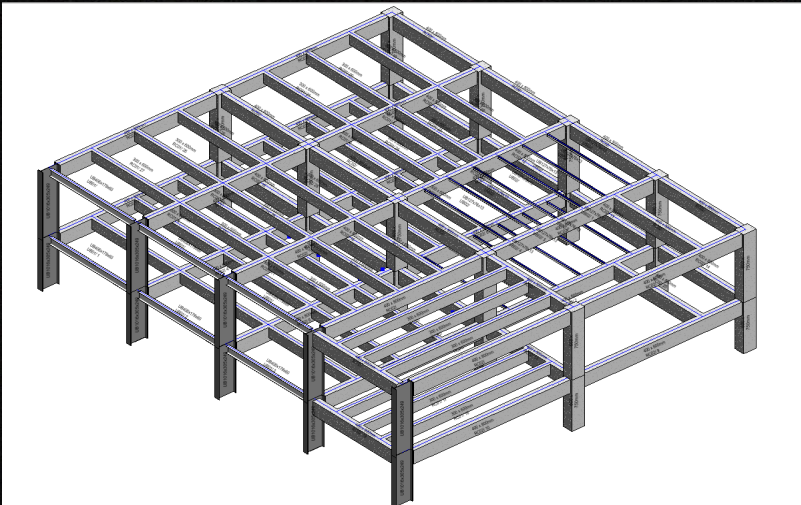


2nd PRODUCT OF AUTO-DESIGN SERIES

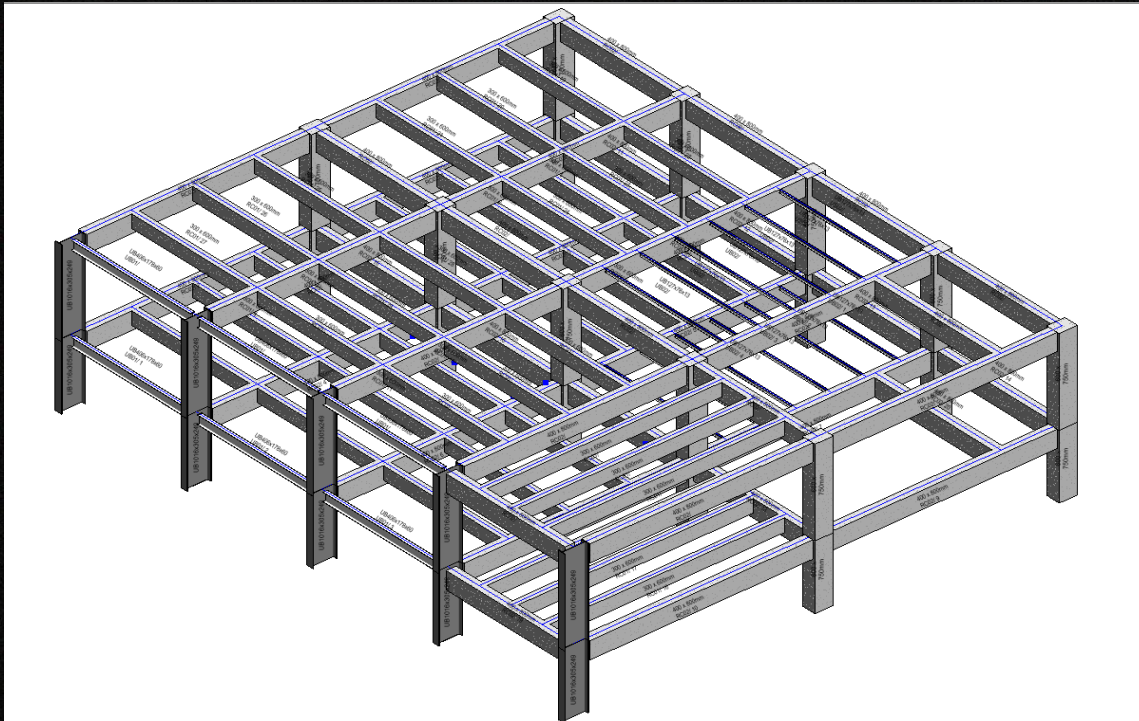
■ Automatic Architectural Design



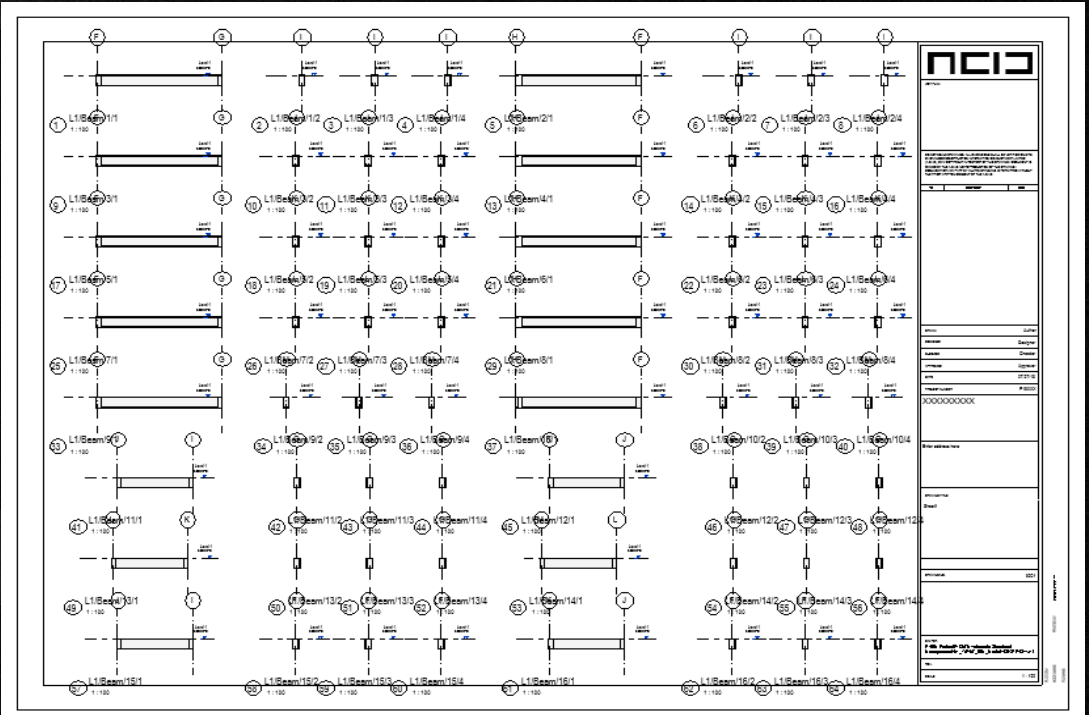
■ Automatic Structural Design



The diagram illustrates a 32-bit bus system. A long horizontal grey bar represents the 32-bit bus. Three vertical lines divide the bus into four segments. The first segment on the left is connected to a grey square representing a 16-bit component. The second and third segments are connected to circular nodes. The fourth segment on the right is connected to another grey square representing a 16-bit component. Above the bus, three circular nodes are shown, each containing the number 42, 43, and 44 respectively. Below the bus, three circular nodes are shown, each containing the number 6001. The nodes are connected to the bus by vertical lines.



- ## All in one video



FLEXIBLE AND MORE

Select the beams



Create sections



Drawing production

(Automatic mode requires high quality model. Convenient but less freedom)


- **Manual Mode Video**


More supports coming:


- **Primary Beams**

THANK YOU !




 hongkong@a-c-i-d.com

 +852 3468 5250

 +852 3585 5599

 **A.C.I.D. – HK**
hkacid.com

 **A.C.I.D. – China**
www.a-c-i-d.com

 **BIM Studio**
香港荃灣海盛路 3 號 TML 廣場 35 樓 A2
A2, 35/F, TML Tower,
3 Hoi Shing Road, Tsuen Wan, Hong Kong