

Ceiling Finishes	
Key Value	Description
GS130MC01	600x600X1.5mm THK. NON-PERFORATED CLIP-IN ALUMINIUM CEILING WITH 1.5mm W-ANGLE TRIM POWDER COATED FINISH
GS130MC02	600x600X1.5mm THK. NON-PERFORATED LAY-ON ALUMINIUM CEILING WITH 1.5mm W-ANGLE TRIM POWDER COATED FINISH
GS130MC03	20X150X0.7mm THK. GALVANIZED STEEL BAFFLE CEILING WITH POWDER COAT FINISH AND AT 110mm/140mm SPACING, PERFORATED WITH ACOUSTIC FLEECE AND VOC FREE ANTI-MOULD ACRYLIC EMULSION PAINT ON-OFF FORM CONCRETE AND SERVICES ABOVE
GS130MC04	150x150x50mm EXTERNAL ALUMINIUM CELL CEILING WITH POWDER COATED FINISH AND VOC FREE ANTI-MOULD ACRYLIC EMULSION PAINT ON-OFF FORM CONCRETE AND SERVICES ABOVE
GS130MC05	600x600X1.5mm THK. NON-PERFORATED HOOK-ON ALUMINIUM CEILING WITH 1.5mm THK. W-ANGLE TRIM POWDER COATED FINISH WITH MOISTURE AND VAPOUR RESISTANCE
GS130MC07	275x2000x0.8mm THK. STORMPROOF NON-PERFORATED SUSPENDED ALUMINIUM CEILING PANEL SYSTEM WITH PVF2 COATING
GS130MC08	600x600X1.5mm THK. NON-PERFORATED AIR-TIGHT CLIP-IN ALUMINIUM CEILING "DURLUM" SYSTEM S1.12 WITH ANGLE TRIM POWDER COATED FINISH
GS130PB01	600x600X20mm THK. ACOUSTIC GLASSWOOL CEILING TILE WITH CONCEALED GRID AND SYMMETRICAL EDGE SYSTEM
GS180IW02	100mm THICK INSULATION CEILING WITH 1.5mm THICK STAINLESS STEEL FINISH (SATIN)
GS180FR01	12mm THK. REINFORCED GYPSUM PLASTERBOARD CEILING AND INORGANIC SILICATE BASED MINERAL PAINT SYSTEM W/ GMS SUPPORTING FRAME
GS210EM04	INORGANIC SILICATE BASED MINERAL PAINT SYSTEM ON 10mm THK. INTERNAL PLASTER
GS210EM05	1 COAT OF LIQUID PREPOLYMER SEALING AND 2 FINISHING COATS OF WHITE ACRYLIC RESIN BASED COATING IN GLOSSY FINISH ON CEILING PLASTER TO CLP'S REQUIREMENT
GS210EP03	PROPRIETARY FIRE PROTECTION BOARD WITH 2 COATS OF VOC FREE ANTI-MOULD ACRYLIC EMULSION PAINT TO MEET FRR REQUIREMENT

Material Legend_Ceiling

1 : 200

Wall Finishes	
Key Value	Description
GS080FF02	FAIRFACE CONCRETE WITH SAW-CUT SURFACE FINISH
GS100GW01	235X19.5X13.5mm THK. UNGLAZED CERAMIC WALL TILE INCLUDING CORNER TILES ON 15mm THK. 1:3 C/S RENDER W/ APPROVED PROPRIETARY ADHESIVE SYSTEM
GS170AL11	2mm THK. ALUMINIUM SHEET ON 18mm THK. PLYWOOD BACKING
GS170BA02	2mm THK. BRONZE ANODIZED STAINLESS STEEL SHEET (GRADE 316) ON 18mm THK. PLYWOOD BACKING
GS170SS02	40x3mm THK. BRONZE ANODIZED STAINLESS STEEL FLAT BAR (GRADE 316)
GS180IW01	100mm THICK INSULATION WALL WITH 1.5mm THICK STAINLESS STEEL FINISH (SATIN) (GRADE 316)
GS180TA01	16mm THK. MDF TIMBER ACOUSTIC PANEL "TOPAKUSTIK" TOPPERFO-T 16/16/10-2 (PERFORATED) WITH OAK VENEER ECO FINISH FACING AND ASSOCIATED FRAMEWORK, OVERALL THICKNESS 55mm
GS180TL03	600X300X10mm THK. PORCELAIN TILE ON 15mm THK. 1:3 C/S RENDER WITH APPROVED PROPRIETARY ADHESIVE SYSTEM AND POINTING IN 2mm JOINTS WITH COLOURED GROUTING
GS180TL10	152x152x5mm THK. GLAZED CERAMIC TILE ON 15mm THK. 1:3 C/S RENDER W/ APPROVED PROPRIETARY ADHESIVE SYSTEM
GS180TL14	150X150X5.5mm THK. WHITE CERAMIC TILES DADO 1500mmH AND ONE COAT OF LIQUID PREPOLYMER SEALING
GS180SD01	12mm THK. SOLID SURFACING MATERIAL ON 18mm THK. PLYWOOD BACKING
GS180LS01	1mm THK. LAMINATED PLASTIC SHEET FINISH ON 18mm THK. PLYWOOD BACKING
GS200TG02	6mm THK. BACK PAINTED TEMPERED GLASS ON 18mm THK. PLYWOOD BACKING
GS210EP05	15mm THK. INTERNAL PLASTER WITH INORGANIC SILICATE BASED MINERAL PAINT SYSTEM
GS210EP06	INORGANIC SILICATE BASED MINERAL PAINT SYSTEM ON 20mm THK. EXTERNAL RENDER

Material Legend_Wall

1 : 200

Skirting Finishes	
Key Value	Description
GS180TL07	900X100X10mm THK. PORCELAIN SKIRTING TILE ON 1:3 C/S RENDER WITH APPROVED PROPRIETARY ADHESIVE SYSTEM AND POINTING IN 2mm JOINTS WITH COLOURED GROUTING
GS180TL09	600X100X10mm THK. CERAMIC SKIRTING TILE ON 1:3 C/S RENDER WITH APPROVED PROPRIETARY ADHESIVE SYSTEM AND POINTING IN 2mm JOINTS WITH COLOURED GROUTING
GS180TL12	300X100mmX12mm THK. COVED QUARRY SKIRTING TILES ON 1:3 C/S RENDER
GS180VS03	4mm THK. CHEMICAL RESISTANT VINYL SHEET SKIRTING

* NOTE: DESCRIPTION OF THE REMAINING SKIRTING FINISHING CODE TO FOLLOW THAT OF FLOOR FINISHING. SKIRTING HEIGHT TO BE 100mm.

Material Legend_Skirting

1 : 200

Floor Finishes	
Key Value	Description
GS080CH01	MIN. 25mm THK. PROPRIETARY C/S SCREED W/ HARDENER LAID TO FALL WITH TROWELLED SMOOTH FINISH & OVERALL 50mm THK.
GS080FF04	300x300x30mm THK. PRECAST CONCRETE TILES BEDDED ON 25mm THK. C/S SCREED
GS170SS01	3mm THK. S.S. TRIM (SATIN) (GRADE 316)
GS180CS01	PROPRIETARY HEAVY DUTY EPOXY FLOORING SYSTEM, 3mm THK. ON MIN. 50mm THK. PROPRIETARY C/S SCREED STEEL TROWELED SMOOTH FINISH W/ HARDENER
GS180CS02	PROPRIETARY HEAVY DUTY EPOXY FLOORING SYSTEM, 3mm THK. ON MIN. 25mm THK. PROPRIETARY C/S SCREED STEEL TROWELED SMOOTH FINISH W/ HARDENER AND CEMENTITIOUS WATERPROOF SYSTEM (UPTURN 300mm AFFL), LAID TO FALL, OVERALL 25-100mm THK.
GS180CS03	50mm THK. C/S SCREED WITH NON-METALLIC FLOOR HARDENER TROWELLED SMOOTH FINISH, 1 COAT OF POLYURETHANE SEALER, 2 COATS OF EPOXY BASED PAINT AND DUST PROOFING COATING
GS180CS04	PROPRIETARY CARPARK DECKING SYSTEM CONSISTING OF HEAVY DUTY SCREED TROWELLED FINISH TO RECEIVE EPOXY RESIN COATING SYSTEM
GS180CS05	PROPRIETARY CARPARK DECKING SYSTEM CONSISTING OF HEAVY DUTY SCREED TROWELLED FINISH TO RECEIVE EPOXY POLYURETHANE COATING SYSTEM, WITH CEMENTITIOUS WATERPROOF SYSTEM (UPTURN 300mm AFFL)
GS180PF01	50mm THK. HEAVY DUTY POLYURETHANE HYBRID FLOORING SYSTEM "MASTER BUILDERS SOLUTIONS" UCRETE UD200 ON C/S SCREED
GS180PF03	50mm THK. HEAVY DUTY POLYURETHANE HYBRID FLOORING SYSTEM "MASTER BUILDERS SOLUTIONS" UCRETE UD200 ON C/S SCREED WITH CEMENTITIOUS WATERPROOF SYSTEM (UPTURN 300mm AFFL)
GS180PF04	50mm THK. HEAVY DUTY POLYURETHANE HYBRID FLOORING SYSTEM "MASTER BUILDERS SOLUTIONS" UCRETE UD200 ON C/S SCREED WITH CEMENTITIOUS WATERPROOF SYSTEM (UPTURN 1100mm AFFL)
GS180PF05	50mm THK. HEAVY DUTY POLYURETHANE HYBRID FLOORING SYSTEM "MASTER BUILDERS SOLUTIONS" UCRETE UD200 ON C/S SCREED WITH CEMENTITIOUS WATERPROOF SYSTEM (UPTURN 1800mm AFFL)
GS180PF06	50mm THK. HEAVY DUTY POLYURETHANE HYBRID FLOORING SYSTEM "MASTER BUILDERS SOLUTIONS" UCRETE UD200 ON C/S SCREED WITH CEMENTITIOUS WATERPROOF SYSTEM (UPTURN 3050mm AFFL)
GS180TL01	450X900X10mm THK. PORCELAIN TILES (BEIGE COLOUR) ON C/S SCREED FIXING WITH APPROVED PROPRIETARY ADHESIVE AND POINTING IN 2mm JOINTS WITH COLOURED GROUTING (R10) OVERALL 50mm THK.
GS180TL02	450X900X10mm THK. PORCELAIN TILES (BROWN COLOUR) ON C/S SCREED FIXING WITH APPROVED PROPRIETARY ADHESIVE AND POINTING IN 2mm JOINTS WITH COLOURED GROUTING (R10) OVERALL 50mm THK.
GS180TL05	600X300X10mm THK. PORCELAIN FLOOR TILES ON C/S SCREED FIXING WITH APPROVED PROPRIETARY ADHESIVE AND POINTING IN 2mm JOINTS WITH COLOURED GROUTING WITH CEMENTITIOUS WATERPROOF SYSTEM (UPTURN 300mm AFFL FOR TOILET & WET AREA) (R11) OVERALL 50mm THK.
GS180TL06	600X300X10mm THK. PORCELAIN FLOOR TILES ON C/S SCREED FIXING WITH APPROVED PROPRIETARY ADHESIVE AND POINTING IN 2mm JOINTS WITH COLOURED GROUTING WITH CEMENTITIOUS WATERPROOF SYSTEM (UPTURN 1800mm AFFL FOR SHOWER AREA) (R11) OVERALL 50mm THK.
GS180TL08	300X600X10mm THK. CERAMIC TILE ON C/S SCREED WITH APPROVED PROPRIETARY ADHESIVE SYSTEM AND POINTING IN 2mm JOINTS WITH COLOURED GROUTING AND WITH CEMENTITIOUS WATERPROOF SYSTEM (UPTURN 300mm AFFL FOR WET AREA ONLY) (R10) OVERALL 50mm THK.
GS180TL11	300x300x12mm THK. NON-SLIP QUARRY FLOOR TILE ON C/S SCREED LAID TO FALL (MIN. 25mm THK) OVERALL 50mm THK. WITH CEMENTITIOUS WATERPROOF SYSTEM (UPTURN 300mm AFFL)
GS180IW03	100mm THK. INSULATION PANEL ON 25mmTHK. C/S SCREEDING WITH CEMENTITIOUS WATERPROOF SYSTEM. LIGHT WEIGHT CONCRETE SLAB TO BE SITTING ON TOP OF THE INSULATION PANEL. C/S SCREED LAID TO FALL 1:100 ON LIGHT WEIGHT CONCRETE SLAB
GS180VS01	4mm THK. CHEMICAL RESISTANT HOMOGENEOUS FULLY FLEXIBLE FOAM BACKED VINYL FLOORING WITH SELF COVING BONDED ON 10mm THK. SELF-SMOOTHING SCREED AND LAID ON C/S SCREED WITH WATERPROOF MEMBRANE (UPTURN 300mm AFFL FOR WET AREA ONLY), OVERALL 50mm THK.
GS180VS02	4mm THK. CHEMICAL RESISTANT HOMOGENEOUS FULLY FLEXIBLE FOAM BACKED VINYL FLOORING BONDED ON RAISED FLOOR PANEL SYSTEM, OVERALL 350mm THK.

Material Legend_Floor

1 : 200

NOTES

1. ALL FLOOR FINISHING OF P.D., WORKSTATION SERVICES MAINTENANCE SPACE ARE 50mm THK. HEAVY DUTY POLYURETHENE RESIN FLOOR SYSTEM ON 1:3 C/S SCREEDING.

2. WALL AND CEILING FINISHING OF P.D., WORKSTATION SERVICES MAINTENANCE SPACE ARE VOC FREE ANTI-MOULD ACRYLIC EMULSION PAINT ON-OFF FORM CONCRETE.

3. ALL EXPOSED SURFACE OF G.M.S. WORK TO BE PAINTED WITH SYNTHETIC PAINT REFER CURRENT GENERAL SPECIFICATION.

4. ALL S.S. METAL WORK TO BE IN GRADE 316 SATIN FINISH EXCEPT THOSE OTHERWISE STATED.

5. APPLY APPROVED WOOD PRESERVATIVE TO ALL UNEXPOSED SURFACES OF TIMBER IN ACCORDANCE TO CURRENT GENERAL SPECIFICATION. ALL EXPOSED SURFACE OF CARPENTRY AND JOINERY WORK TO BE APPLIED W/ WOOD PAINT WITHOUT COLOUR EXCEPT THOSE OTHERWISE STATED, DETAIL REF. TABLE OF GENERAL FINISH

6. PROPRIETARY WATERPROOF MEMBRANE SHALL BE : TYPE 'B1' LIQUID APPLIED MATERIAL AS SPECIFIED IN CLAUSE 12.100 OF GENERAL SPECIFICATION FOR BUILDING 2017 EDITION AND LAID STRICTLY IN ACCORDANCE WITH MANUFACTURER'S / SPECIALIST CONTRACTOR'S SPECIFICATION & RECOMMENDATIONS.

no.	date	description	initial
REVISION			
		name	date
designed			11/2017
drawn			11/2017
checked			11/2017
approved			
Chief Architect			11/2017
Senior Architect			11/2017
Project Architect			11/2017
		signed	date
contract no.			
file no.			
project no.			
contract			
drawing title			
SCHEDULE & DETAILS OF INTERNAL FINISHES (SHEET 1 OF 7)			
drawing no.		scale	
		1 : 200	

office

Finish Schedule_GF						
WT	Name	Detail Mark	Ceiling Finish	Wall Finish	Skirting Finish	Floor Finish
GF	AHU ROOM GA	F5a	GS210EM04	GS210EP05	GS180CS01	GS180CS01
GF	BIER 1	F4c	GS130MC01	GS210EP05	GS180PF04	GS180PF04
GF	BIER 2	F4c	GS130MC01	GS210EP05	GS180PF04	GS180PF04
GF	BODY BAG STORE	F9a	GS130MC02	GS210EP05	GS180TL09	GS180TL08
GF	BODY COLLECTION PUBLIC WAITING HALL	F3	GS130MC03, GS130TA01	GS170SS02, GS180SD01, GS180TA01, GS200TG01, GS210EP05	NO FINISH	GS170SS01, GS180TL01, GS180TL02
GF	BODY DISPATCH HOLDING AREA	F4c	GS130MC01	GS210EP05	GS180PF04	GS180PF04
GF	BODY LIFT LOBBY	F9a	GS130MC02	GS210EP05	GS180TL09	GS180TL08
GF	BODY RECEIPT AND DISPATCH ROOM	F6	GS130MC01	GS210EP05	GS180VS01	GS180VS01
GF	BODY RECEIPT AND DISPATCH ROOM	F4c	GS130MC01	GS210EP05	GS180PF04	GS180PF04
GF	BODY RECEIPT HOLDING AREA	F4c	GS130MC01	GS210EP05	GS180PF04	GS180PF04
GF	CALL ROOM	F4b	GS130MC01	GS210EP05	GS180PF03	GS180PF03
GF	CENTRAL BATTERY SYSTEM ROOM	F5a	GS210EM04	GS210EP05	GS180CS01	GS180CS01
GF	CEREMONY HALL-1	F3	GS130MC03, GS180FR01	GS170AL11, GS170SS02, GS180SD01, GS180TA01, GS210EP05	NO FINISH	GS180TL01
GF	CEREMONY HALL-2	F3	GS130MC03, GS180FR01	GS170AL11, GS170SS02, GS180SD01, GS180TA01, GS210EP05	NO FINISH	GS180TL01
GF	CEREMONY HALL-3	F3	GS130MC03, GS180FR01	GS170AL11, GS170SS02, GS180SD01, GS180TA01, GS210EP05	NO FINISH	GS180TL01
GF	CLEAN CORRIDOR FOR PUBLIC	F1	GS130MC02	GS210EP05	NO FINISH	GS180TL01
GF	CLEAN CORRIDOR GA	F1	GS130MC02	GS210EP05	NO FINISH	GS180TL01
GF	CLEAN CORRIDOR GB	F1	GS130MC02	GS210EP05	NO FINISH	GS180TL01
GF	CLEANER'S STORE	F4a	GS130MC01	GS210EP05	GS180PF01	GS180PF01
GF	CLINICAL WASTE STORE	F9a	GS130MC01	GS210EP05	GS180TL09	GS180TL08
GF	CONTAMINATED LINEN PRE-TREATMENT ROOM	F4b	GS130MC01	GS210EP05	GS180PF03	GS180PF03
GF	D.G. STORE 1 (CAT.5 CL.1 DIV.2)	F5a	GS210EM04	GS210EP05	GS180CS01	GS180CS01
GF	D.G. STORE 2 (CAT.5 CL.1 DIV.2)	F5a	GS210EM04	GS210EP05	GS180CS01	GS180CS01
GF	D.G. STORE 3 (CAT.5 CL.1 DIV.1)	F5a	GS210EP03	GS210EP05	GS180CS01	GS180CS01
GF	D.G. STORE 4 (CAT.3)	F5a	GS210EP03	GS210EP05	GS180CS01	GS180CS01
GF	D.G. STORE 5 (CAT.7)	F5a	GS210EP03	GS210EP05	GS180CS01	GS180CS01
GF	D.G. STORE 6 (CAT.5 CL.3)	F5a	GS210EP03	GS210EP05	GS180CS01	GS180CS01
GF	D.G. STORE PROTECTED LOBBY	F5a	GS210EM04	GS210EP05	GS180CS01	GS180CS01
GF	D.G. STORE PROTECTED LOBBY	F5a	GS210EM04	GS210EP05	GS180CS01	GS180CS01
GF	DIRTY CORRIDOR GA	F4c	GS130MC01	GS210EP05	GS180PF04	GS180PF04
GF	DIRTY CORRIDOR GB	F4c	GS130MC01	GS210EP05	GS180PF04	GS180PF04
GF	DIRTY CORRIDOR GC	F4c	GS130MC01	GS210EP05	GS180PF04	GS180PF04
GF	DIRTY CORRIDOR GD	F4c	GS130MC01	GS210EP05	GS180PF04	GS180PF04
GF	DISABLED TOILETS	F8	GS130MC05	GS180TL03	NO FINISH	GS180TL05
GF	ELV.ROOM GA	F5a	GS210EM04	GS210EP05	GS180CS01	GS180CS01
GF	EMERGENCY BODY BAG STORE 1	F9a	GS130MC02	GS210EP05	GS180TL09	GS180TL08
GF	ENCOFFINING RM - 1	F4c	GS130MC01	GS210EP05	GS180PF04	GS180PF04
GF	ENCOFFINING RM - 2	F4c	GS130MC01	GS210EP05	GS180PF04	GS180PF04
GF	ENCOFFINING RM - 3	F4c	GS130MC01	GS210EP05	GS180PF04	GS180PF04
GF	ENCOFFINING RM - 4	F4c	GS130MC01	GS210EP05	GS180PF04	GS180PF04
GF	ENCOFFINING RM - 5	F4c	GS130MC01	GS210EP05	GS180PF04	GS180PF04
GF	ENCOFFINING RM - 6	F4c	GS130MC01	GS210EP05	GS180PF04	GS180PF04
GF	ENTRANCE FOYER	F2d	GS130MC03, GS180FR01, GS210EP03	GS080FF02, GS210EP05, GS180TL50	NO FINISH	GS180TL02
GF	F. TOILET	F8	GS130MC05	GS180TL03	NO FINISH	GS180TL05
GF	FAN ROOM	F5a	GS210EM04	GS210EP05	GS180CS01	GS180CS01
GF	FIREMEN'S LIFT LOBBY 1	F9a	GS130MC02, GS210EP03	GS210EP05	GS180TL09	GS180TL08
GF	FIREMEN'S LIFT PROTECTED CORRIDOR	F9a	GS130MC02, GS210EP03	GS210EP05	GS180TL09	GS180TL08
GF	LINEN STORE	F9a	GS130MC02	GS210EP05	GS180TL09	GS180TL08
GF	LOADING / UNLOADING AREA	F10a	GS130MC04	GS100GW01	GS180CS04	GS180CS04
GF	LOADING / UNLOADING AREA	F10a	GS130MC04	GS100GW01	GS180CS04	GS180CS04
GF	LOADING / UNLOADING AREA	F10a	GS130MC04	GS100GW01	GS180CS04	GS180CS04
GF	M. BOOTING ROOM	F8	GS130MC05	GS180TL03	NO FINISH	GS180TL05
GF	M. GOWNING & DE-GOWNING ROOM	F8	GS130MC05	GS180TL03	NO FINISH	GS180TL05, GS180TL06
GF	M. TOILET	F8	GS130MC05	GS180TL03	NO FINISH	GS180TL05
GF	MAIN SWITCH ROOM	F5a	GS210EM04	GS210EP05	GS180CS01	GS180CS01
GF	MAIN SWITCH ROOM (ESS)	F5a	GS210EM04	GS210EP05	GS180CS01	GS180CS01
GF	MALE TOILETS	F8	GS130MC05	GS180TL03	NO FINISH	GS180TL05
GF	PPE STORE	F9a	GS130MC02	GS210EP05	GS180TL09	GS180TL08
GF	PUBLIC PASSAGE	F1	GS130MC02	GS210EP05	NO FINISH	GS180TL01
GF	PUBLIC PASSAGE	F1	GS130TA01	GS210EP05	NO FINISH	GS180TL01
GF	PUBLIC PASSAGE OUTSIDE SECURITY CONTROL RM	F1	GS130MC02	GS210EP05	NO FINISH	GS180TL01
GF	REFUSE CHAMBER	F12	GS210EM04	GS180TL10	GS180TL12	GS180TL11
GF	RESTING LOUNGE	F7	GS130PB01	GS180TA01	GS180VS01	GS180VS01
GF	SECURITY CONTROL RM	F6	GS130PB01	GS210EP05	GS180VS01	GS180VS01
GF	SLUICE ROOM 1	F9c	GS130MC05	GS210EP05	GS180TL09	GS180TL08
GF	SLUICE ROOM 2	F9c	GS130MC05	GS210EP05	GS180TL09	GS180TL08
GF	ST-1	F9b	GS210EM04	GS210EP06	NO FINISH	GS180TL08
GF	ST-2a	F4a	GS130MC01, GS210EM04	GS210EP05	GS180PF01	GS180PF01
GF	ST-2a PROTECTED LOBBY	F4b	GS130MC01	GS210EP05	GS180PF03	GS180PF03
GF	ST-4	F2b	GS210EM04	GS210EP05	NO FINISH	GS180TL02
GF	SWITCH ROOM GA (L.V.)	F5a	GS210EM04	GS210EP05	GS180CS01	GS180CS01
GF	SWITCH ROOM LOBBY	F5a	GS210EM04	GS210EP05	GS180CS01	GS180CS01
GF	TOWNGAS CABINET	F5a	GS210EM04	GS210EP05	GS180CS01	GS180CS01
GF	TRANSFORMER ROOM	F15	GS210EM05	GS180TL14, GS210EP05	NO FINISH	GS180CS03
GF	TROLLEY WASHING AREA	F4d	GS130MC01	GS210EP05	GS180PF05	GS180PF05
GF	UNISEX ACCESSIBLE TOILET	F8	GS130MC05	GS180TL03	NO FINISH	GS180TL05
GF	UNISEX. ACC. TOI.	F8	GS130MC05	GS180TL03	NO FINISH	GS180TL05
GF	VIEW ROOM 1	F7	GS130PB01	GS180TA01	GS180VS01	GS180VS01

Finish Schedule_GF						
WT	Name	Detail Mark	Ceiling Finish	Wall Finish	Skirting Finish	Floor Finish
GF	VIEW ROOM 2	F7	GS130PB01	GS180TA01	GS180VS01	GS180VS01
GF	WATER TANK & PUMP ROOM	F5b	GS210EM04	GS210EP05	GS180CS02	GS180CS02

NOTES

1. NOTES REFER DWG. NO. DL001.
2. KEY NOTES LEGEND REFER DWG. NO. CA001.
3. CEILING LEGEND REFER DWG. NO. CF001.

no.	date	description	initial
REVISION			
		name	date
designed			11/2017
drawn			11/2017
checked			11/2017
approved			
Chief Architect			11/2017
Senior Architect			11/2017
Project Architect		signed	11/2017, date
contract no.			
file no.			
project no.			
contract			

drawing title

SCHEDULE & DETAILS OF
INTERNAL FINISHES (SHEET 2 OF
7)

drawing no.

scale

office

17/11/2017 2:56:54 PM

A1 841 x 594

Finish Schedule_1/F						
Location	Name	Finishing Mark	Ceiling Finish	Wall Finish	Skirting Finish	Floor Finish
1F	5 NOS. DRY PIPE VALVE RM. (COLD RM.)	F5b	GS210EM04	GS210EP05	GS180CS02	GS180CS02
1F	BABY CARE	F8	GS130PB01	GS180TL03	NO FINISH	GS180TL05
1F	BIER 1	F4c	GS130MC01	GS210EP05	GS180PF04	GS180PF04
1F	BIER 2	F4c	GS130MC01	GS210EP05	GS180PF04	GS180PF04
1F	BIER 3	F4c	GS130MC01	GS210EP05	GS180PF04	GS180PF04
1F	BOOTING ROOM	F8	GS130MC05	GS180TL03	NO FINISH	GS180TL05
1F	CLEANER'S STORE	F4a	GS130MC01	GS210EP05	GS180PF01	GS180PF01
1F	CORRIDOR FOR PUBLIC WAITING HALL	F3	GS130TA01	GS170SS02, GS180SD01, GS180TA01, GS200TG01, GS210EP05	NO FINISH	GS170SS01, GS180TL01, GS180TL02
1F	DIRTY CORRIDOR 1A	F4c	GS130MC01	GS210EP05	GS180PF04	GS180PF04
1F	DIRTY CORRIDOR 1B	F4c	GS130MC01	GS210EP05	GS180PF04	GS180PF04
1F	DIRTY CORRIDOR 1C	F4c	GS130MC01	GS210EP05	GS180PF04	GS180PF04
1F	DISABLED TOILETS	F8	GS130MC05	GS180TL03	NO FINISH	GS180TL05
1F	DISINFECTANTS STORE	F4a	GS130MC01	GS210EP05	GS180PF01	GS180PF01
1F	DRY PIPE VALVE	F5b	GS210EM04	GS210EP05	GS180CS02	GS180CS02
1F	ELV ROOM 1B	F5a	GS210EM04	GS210EP05	GS180CS01	GS180CS01
1F	ELV.ROOM 1A	F5a	GS210EM04	GS210EP05	GS180CS01	GS180CS01
1F	EMERGENCY BODY BAG STORE 2	F9a	GS130MC02	GS210EP05	GS180TL09	GS180TL08
1F	EXTERNAL BODY EXAM. AREA	F4d	GS130MC01	GS210EP05	GS180PF05	GS180PF05
1F	F. GOWNING AND DE-GOWNING ROOM	F8	GS130MC05	GS180TL03	NO FINISH	GS180TL05, GS180TL06
1F	F. TOILET	F8	GS130MC05	GS180TL03	NO FINISH	GS180TL05
1F	FEMALE TOILETS	F8	GS130MC05	GS180TL03	NO FINISH	GS180TL05
1F	FIREMEN'S LIFT LOBBY 1	F9a	GS130MC02, GS210EP03	GS210EP05	GS180TL09	GS180TL08
1F	FIREMEN'S LIFT LOBBY 2	F2d	GS130MC03, GS180FR01, GS210EP03	GS080FF02, GS210EP05, GS180TL50	NO FINISH	GS180TL02
1F	FIREMEN'S LIFT PROTECTED CORRIDOR 1A	F9a	GS130MC02, GS210EP03	GS210EP05	GS180TL09	GS180TL08
1F	FIREMEN'S LIFT PROTECTED CORRIDOR 1B	F9a	GS130MC02, GS210EP03	GS210EP05	GS180TL09	GS180TL08
1F	INTERVIEW PUBLIC WAITING HALL	F3	GS130MC03, GS130TA01	GS170SS02, GS180SD01, GS180TA01, GS200TG01, GS210EP05	NO FINISH	GS170SS01, GS180TL01, GS180TL02
1F	INTERVIEW PUBLIC WAITING HALL	F3	GS130TA01	GS170SS02, GS180SD01, GS180TA01, GS210EP05	NO FINISH	GS170SS01, GS180TL01, GS180TL02
1F	INTERVIEW ROOM 1	F6	GS130PB01	GS210EP05	GS180VS01	GS180VS01
1F	INTERVIEW ROOM 2	F6	GS130PB01	GS210EP05	GS180VS01	GS180VS01
1F	INTERVIEW ROOM 3	F6	GS130PB01	GS210EP05	GS180VS01	GS180VS01
1F	M. TOILET	F8	GS130MC05	GS180TL03	NO FINISH	GS180TL05
1F	MAIN COLD ROOM-1	F14	GS180IW02	GS180IW01	GS180PF06	GS180IW03, GS180PF06
1F	MAIN COLD ROOM-2	F14	GS180IW02	GS180IW01	GS180PF06	GS180IW03, GS180PF06
1F	MAIN COLD ROOM-3	F14	GS180IW02	GS180IW01	GS180PF06	GS180IW03, GS180PF06
1F	MAIN COLD ROOM-4	F14	GS180IW02	GS180IW01	GS180PF06	GS180IW03, GS180PF06
1F	MAIN DECOMPOSED BODY COLD ROOM	F14	GS180IW02	GS180IW01	GS180PF06	GS180IW03, GS180PF06
1F	MAINTENANCE LOBBY 1A	F5a	GS210EM04	GS210EP05	GS180CS01	GS180CS01
1F	MAINTENANCE LOBBY 1B	F5a	GS210EM04	GS210EP05	GS180CS01	GS180CS01
1F	MAINTENANCE LOBBY 1C	F5a	GS210EM04	GS210EP05	GS180CS01	GS180CS01
1F	MAINTENANCE LOBBY 1D	F5a	GS210EM04	GS210EP05	GS180CS01	GS180CS01
1F	MAINTENANCE SPACE M1A	F14	GS180IW02	GS180IW01	GS180PF06	GS180IW03, GS180PF06
1F	MAINTENANCE SPACE M1B	F14	GS180IW02	GS180IW01	GS180PF06	GS180IW03, GS180PF06
1F	MAINTENANCE SPACE M2A	F14	GS180IW02	GS180IW01	GS180PF06	GS180IW03, GS180PF06
1F	MAINTENANCE SPACE M2B	F14	GS180IW02	GS180IW01	GS180PF06	GS180IW03, GS180PF06
1F	MAINTENANCE SPACE M3A	F14	GS180IW02	GS180IW01	GS180PF06	GS180IW03, GS180PF06
1F	MAINTENANCE SPACE M3B	F14	GS180IW02	GS180IW01	GS180PF06	GS180IW03, GS180PF06
1F	MAINTENANCE SPACE M4A	F14	GS180IW02	GS180IW01	GS180PF06	GS180IW03, GS180PF06
1F	MAINTENANCE SPACE M4B	F14	GS180IW02	GS180IW01	GS180PF06	GS180IW03, GS180PF06
1F	MAINTENANCE SPACE MDA	F14	GS180IW02	GS180IW01	GS180PF06	GS180IW03, GS180PF06
1F	MAINTENANCE SPACE MDB	F14	GS180IW02	GS180IW01	GS180PF06	GS180IW03, GS180PF06
1F	MALE GOWNING AND DE-GOWNGING ROOM	F8	GS130MC05	GS180TL03	NO FINISH	GS180TL05, GS180TL06
1F	PABX	F5a	GS210EM04	GS210EP05	GS180CS01	GS180CS01
1F	PLANT ROOM FOR COLD ROOM & AHU ROOM 1A	F5a	GS210EM04	GS210EP05	GS180CS01	GS180CS01
1F	PLANT ROOM LOBBY 1A	F5a	GS210EM04	GS210EP05	GS180CS01	GS180CS01
1F	PLANT ROOM LOBBY 1B	F5a	GS210EM04	GS210EP05	GS180CS01	GS180CS01
1F	PPE STORE	F9a	GS130MC02	GS210EP05	GS180TL09	GS180TL08
1F	PUBLIC PASSAGE 1A	F1	GS130MC02	GS210EP05	NO FINISH	GS180TL01

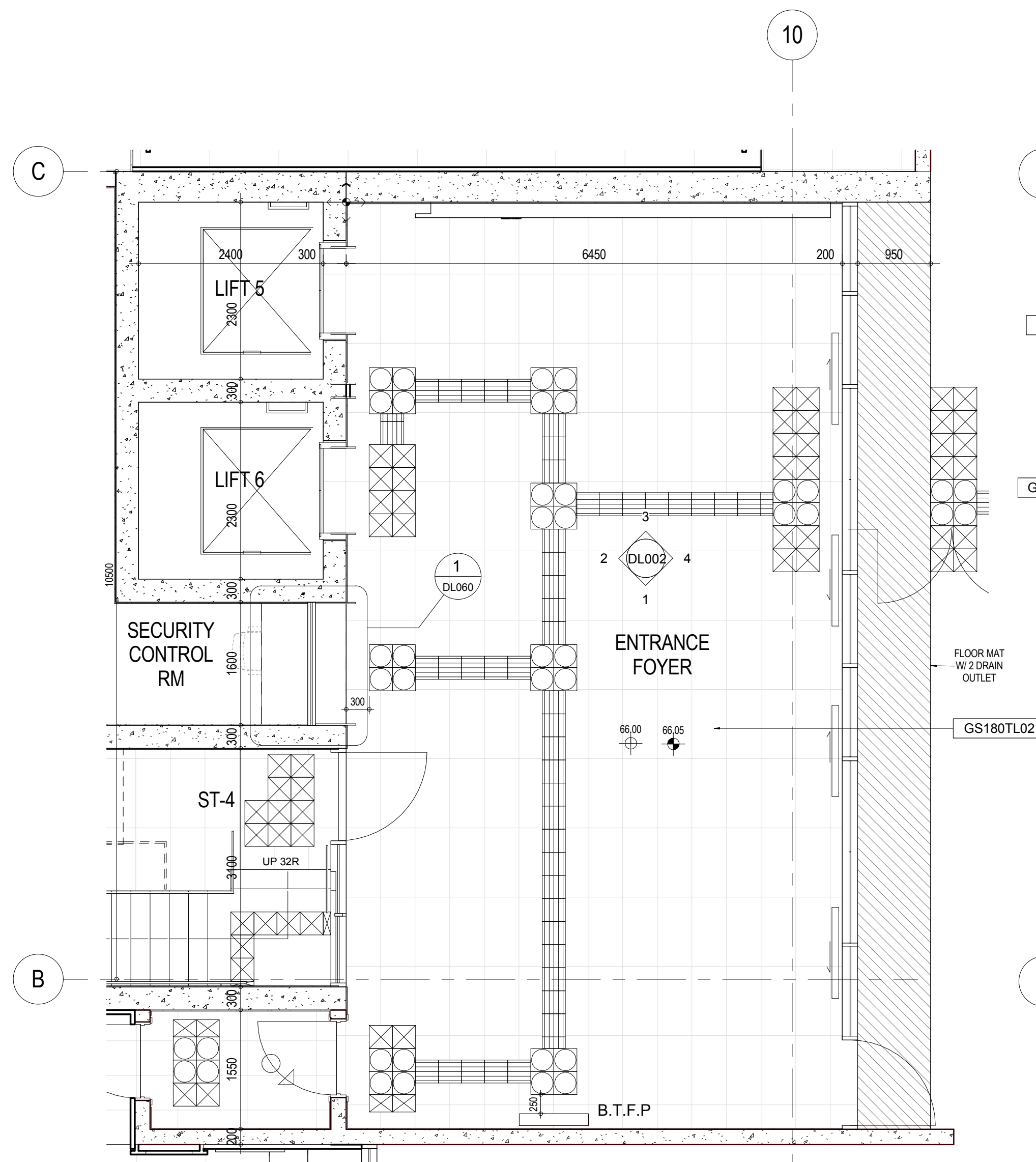
Finish Schedule_1/F						
Location	Name	Finishing Mark	Ceiling Finish	Wall Finish	Skirting Finish	Floor Finish
1F	PUBLIC PASSAGE 1B	F1	GS130MC05	GS210EP05	NO FINISH	GS180TL01
1F	RECEPTION OFFICE	F6	GS130PB01	GS210EP05	GS180VS01	GS180VS01
1F	RESTING LOUNGE 1	F7	GS130PB01	GS180TA01	GS180VS01	GS180VS01
1F	RESTING LOUNGE 2	F7	GS130PB01	GS180TA01	GS180VS01	GS180VS01
1F	SLUICE RM 1A	F9c	GS130MC05	GS210EP05	GS180TL09	GS180TL08
1F	SLUICE RM 1B	F9c	GS130MC05	GS210EP05	GS180TL09	GS180TL08
1F	ST-1	F9b	GS210EM04	GS210EP06	NO FINISH	GS180TL08
1F	ST-2a	F4a	GS130MC01, GS210EM04	GS210EP05	GS180PF01	GS180PF01
1F	ST-2a PROTECTED LOBBY	F4b	GS130MC01	GS210EP05	GS180PF03	GS180PF03
1F	ST-3	F2c	GS210EM04	GS210EP06	NO FINISH	GS180TL01
1F	ST-3 EXIT	F2c	GS210EM04	GS210EP06	NO FINISH	GS180TL01
1F	ST-4	F2b	GS210EM04	GS210EP05	NO FINISH	GS180TL02
1F	SWITCH RM. 1A	F5a	GS210EM04	GS210EP05	GS180CS01	GS180CS01
1F	SWITCH ROOM 1B (L.V.)	F5a	GS210EM04	GS210EP05	GS180CS01	GS180CS01
1F	SWITCH ROOM LOBBY	F5a	GS210EM04	GS210EP05	GS180CS01	GS180CS01
1F	TBE ROOM	F5a	GS210EM04	GS210EP05	GS180CS01	GS180CS01
1F	TROLLEY WASHING AREA	F4d	GS130MC01	GS210EP05	GS180PF05	GS180PF05
1F	UNISEX ACCESSIBLE TOILET	F8	GS130MC05	GS180TL03	NO FINISH	GS180TL05
1F	VIEW ROOM 1	F7	GS130PB01	GS210EP05	GS180VS01	GS180VS01
1F	VIEW ROOM 2	F7	GS130PB01	GS210EP05	GS180VS01	GS180VS01
1F	VIEW ROOM 3	F7	GS130PB01	GS210EP05	GS180VS01	GS180VS01
1F	WATER PUMP ROOM	F5b	GS210EM04	GS210EP05	GS180CS02	GS180CS02

NOTES

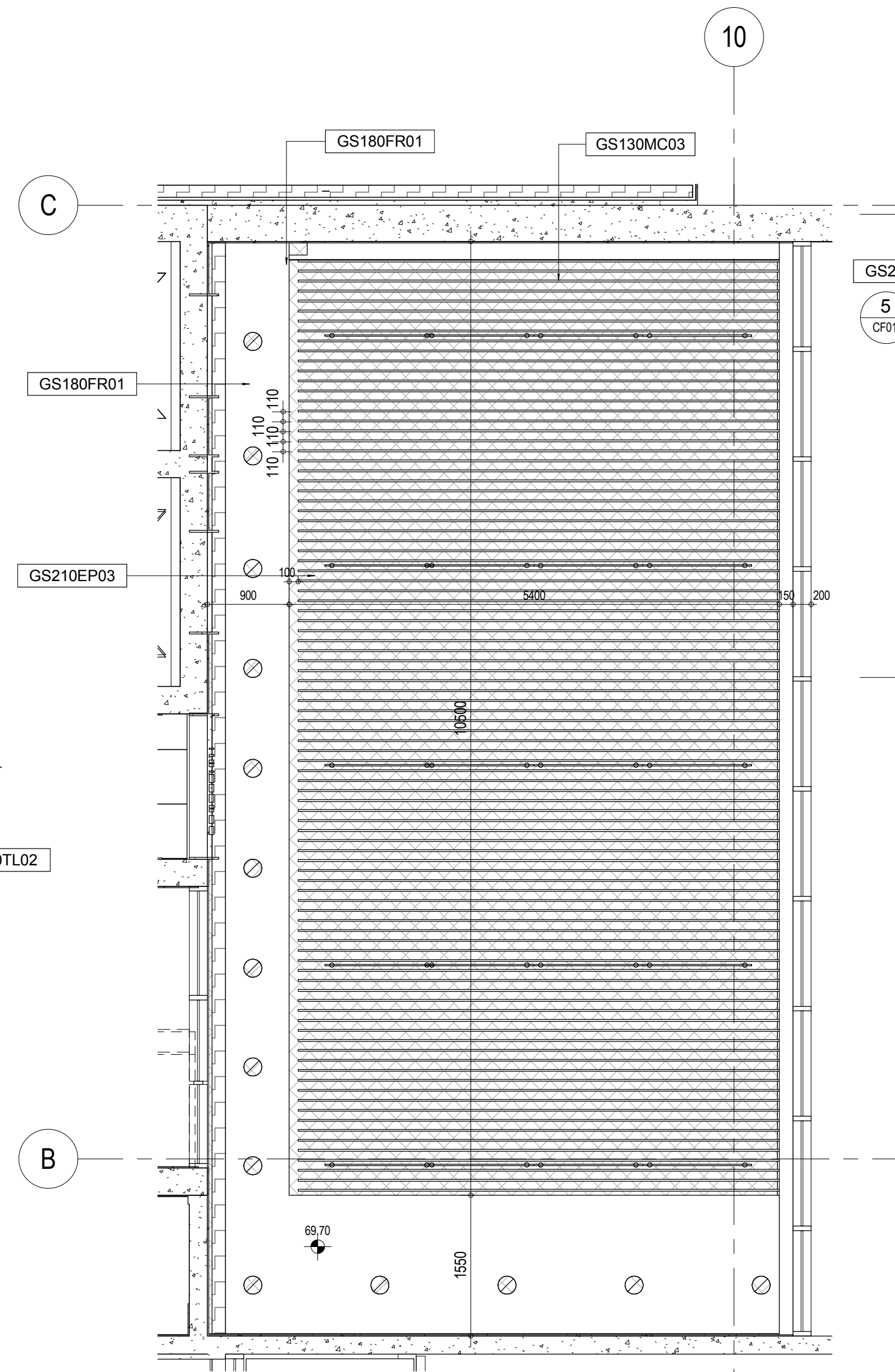
1. NOTES REFER DWG. NO. DL001.
2. KEY NOTES LEGEND REFER DWG. NO. CA001.
3. CEILING LEGEND REFER DWG. NO. CF001.

no.	date	description	initial
REVISION			
		name	date
designed			11/2017
drawn			11/2017
checked			11/2017
approved			
Chief Architect			11/2017
Senior Architect			11/2017
Project Architect			11/2017
contract no.			
file no.			
project no.			
contract			
drawing title			
SCHEDULE & DETAILS OF INTERNAL FINISHES (SHEET 3 OF 7)			
drawing no.		scale	
office			

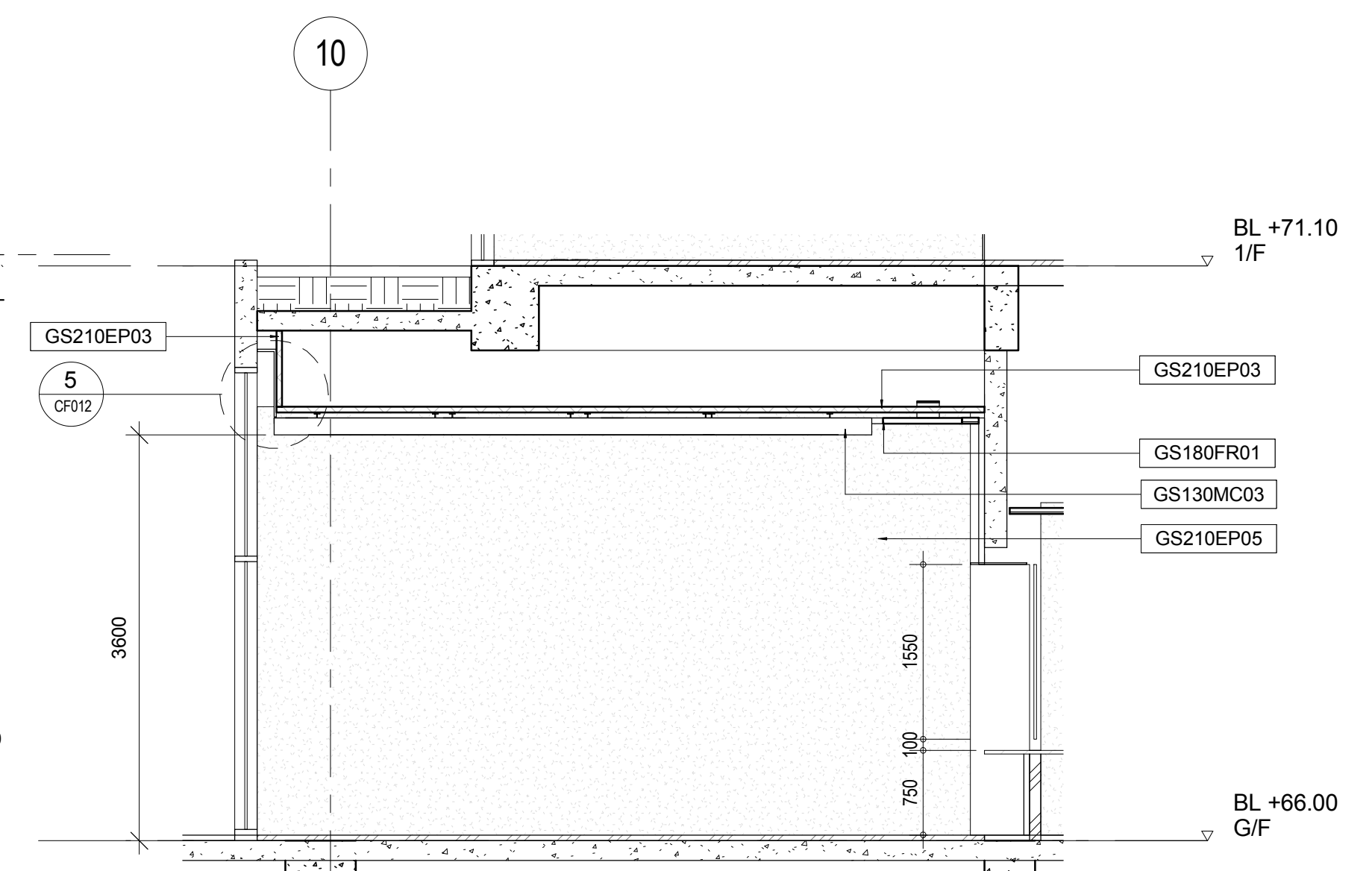
17/11/2017 2:56:59 PM



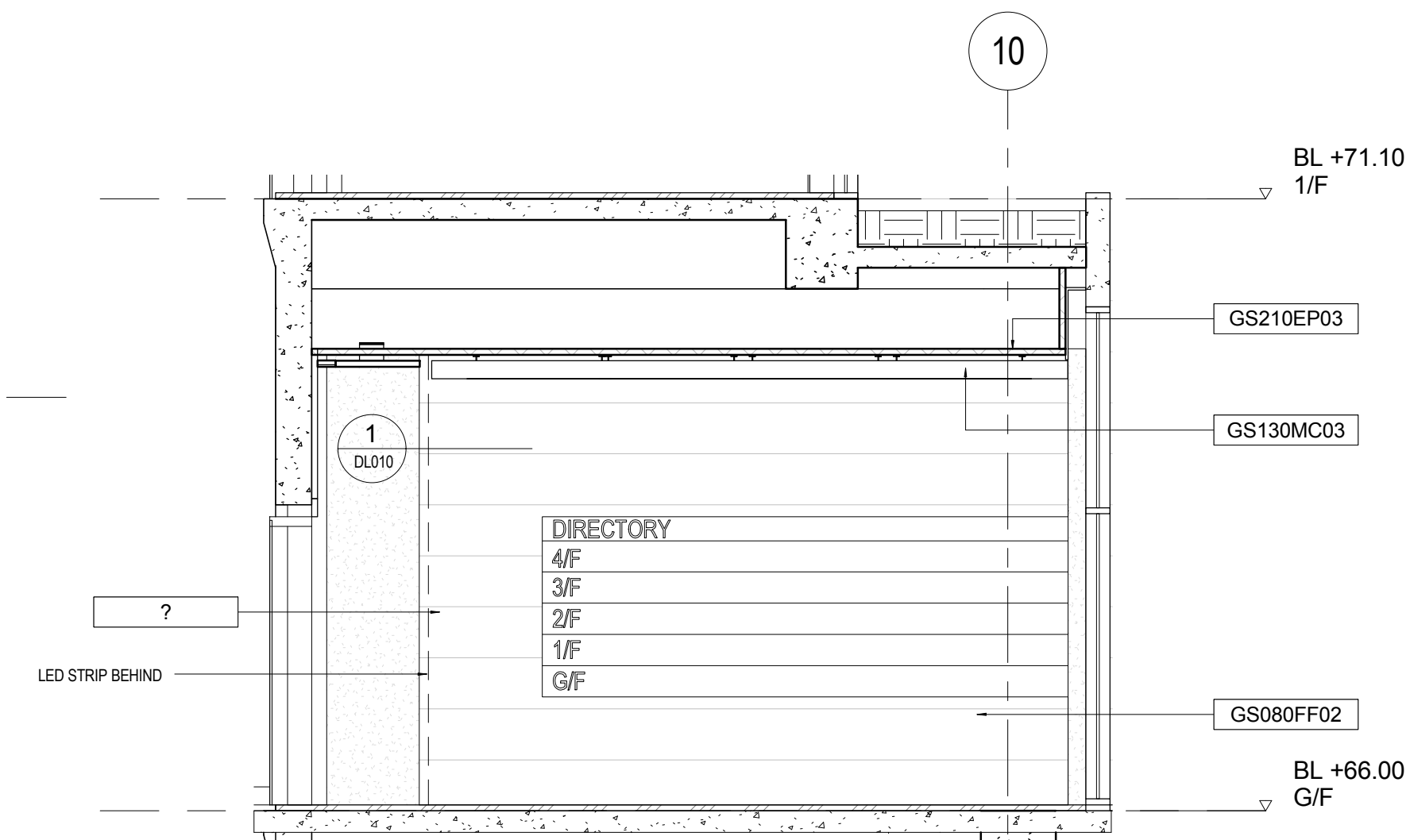
A ENTRANCE FOYER PLAN AT G/F
1 : 50



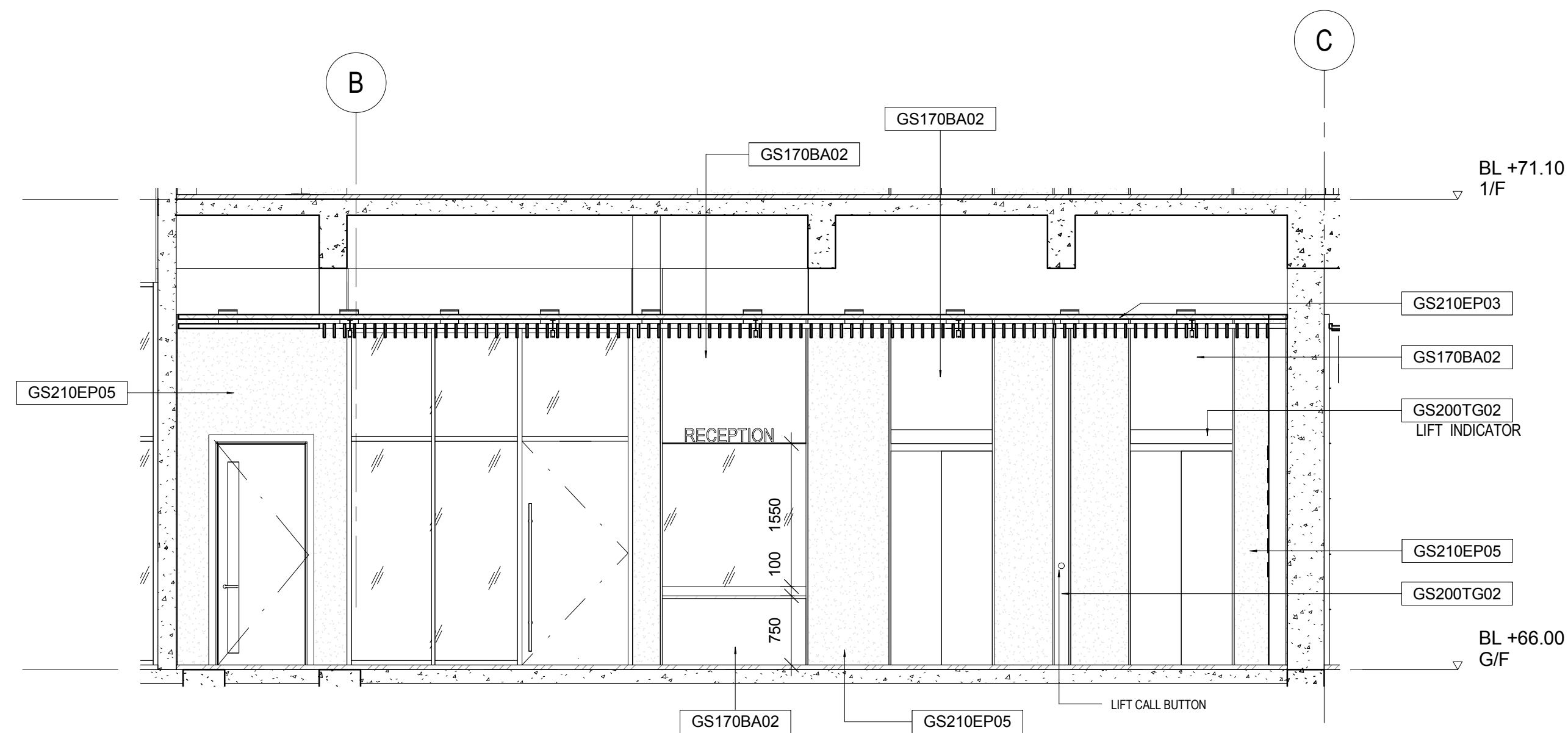
B REFLECTIVE CEILING PLAN
1 : 50



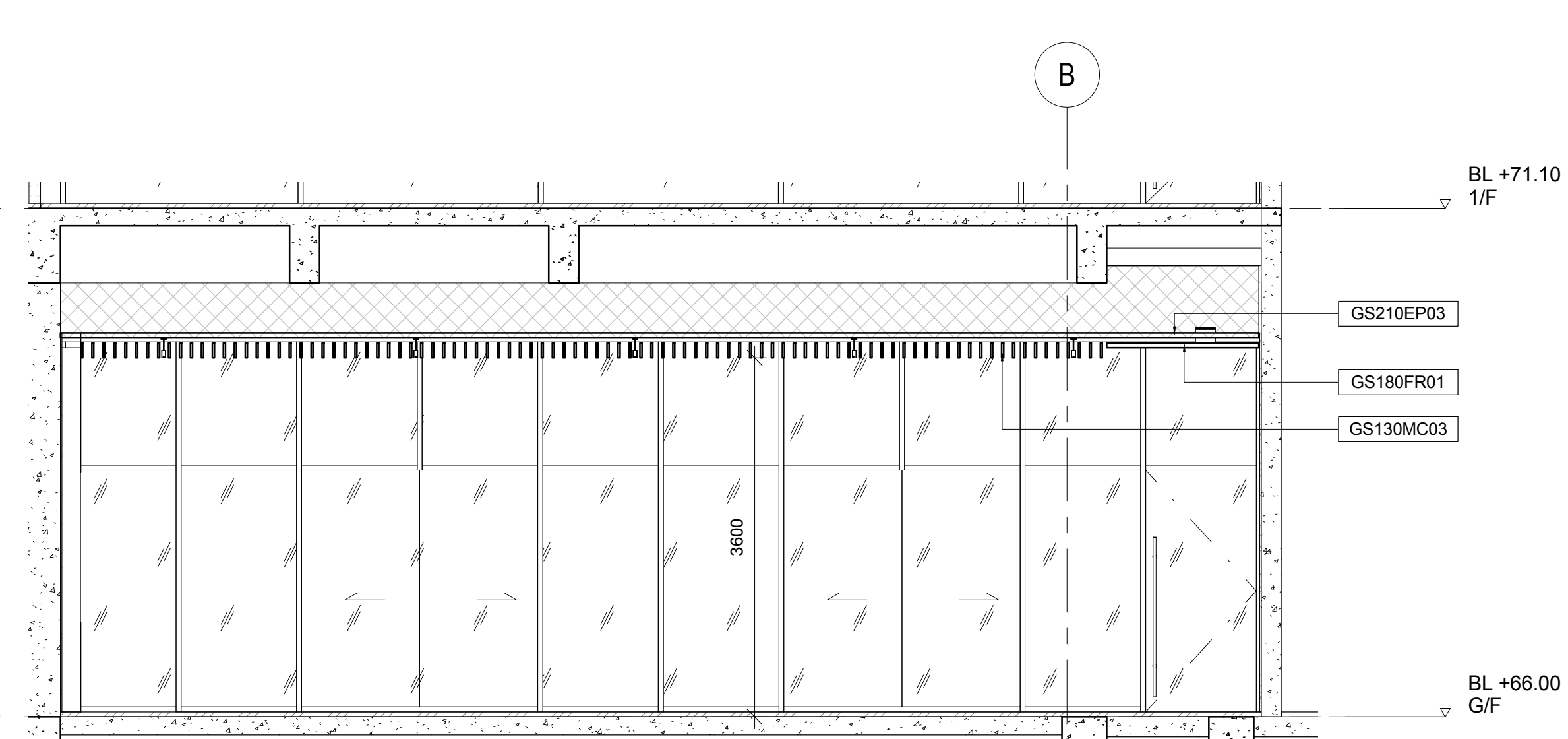
1 ELEVATION
1:50



3 ELEVATION
1:50



2 ELEVATION
1:50



4 ELEVATION
1:50

NOTES

1. NOTES REFER DWG. NO. DL001.
2. KEY NOTES LEGEND REFER DWG. NO. CA001.
3. CEILING LEGEND REFER DWG. NO. CF001.

no.	date	description	initial
REVISION			
		name	date
designed			11/2017
drawn			11/2017
checked			11/2017

approved		
Chief Architect		11/2017
Senior Architect		11/2017
Project Architect		11/2017
	signed	date

contract no.

file no.

project no.

contract

drawing title

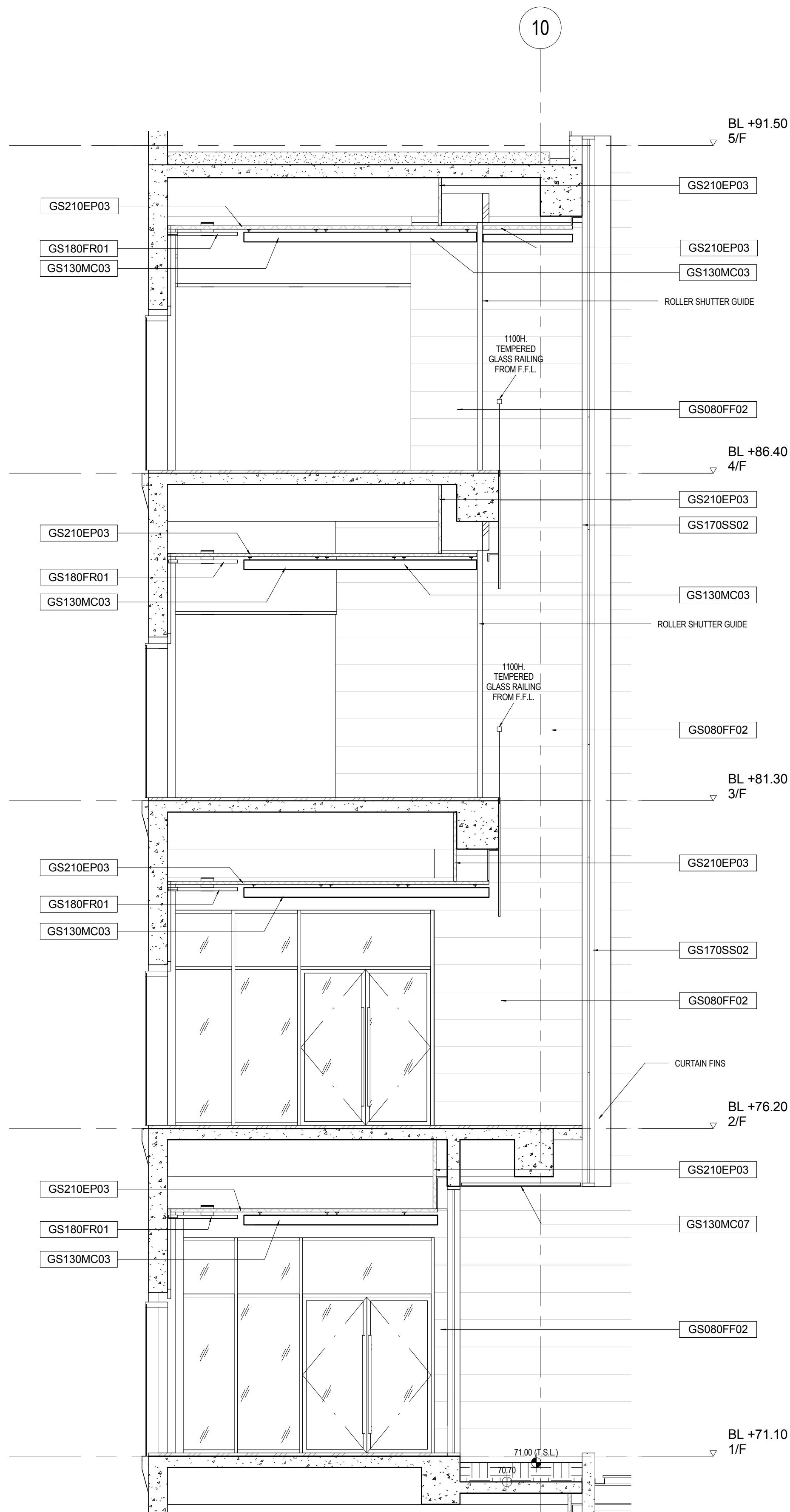
**LAYOUT & DETAILS - FIREMEN'S
LIFT LOBBY OF LIFT 5 & 6
(SHEET 1 OF 7)**

drawing no.

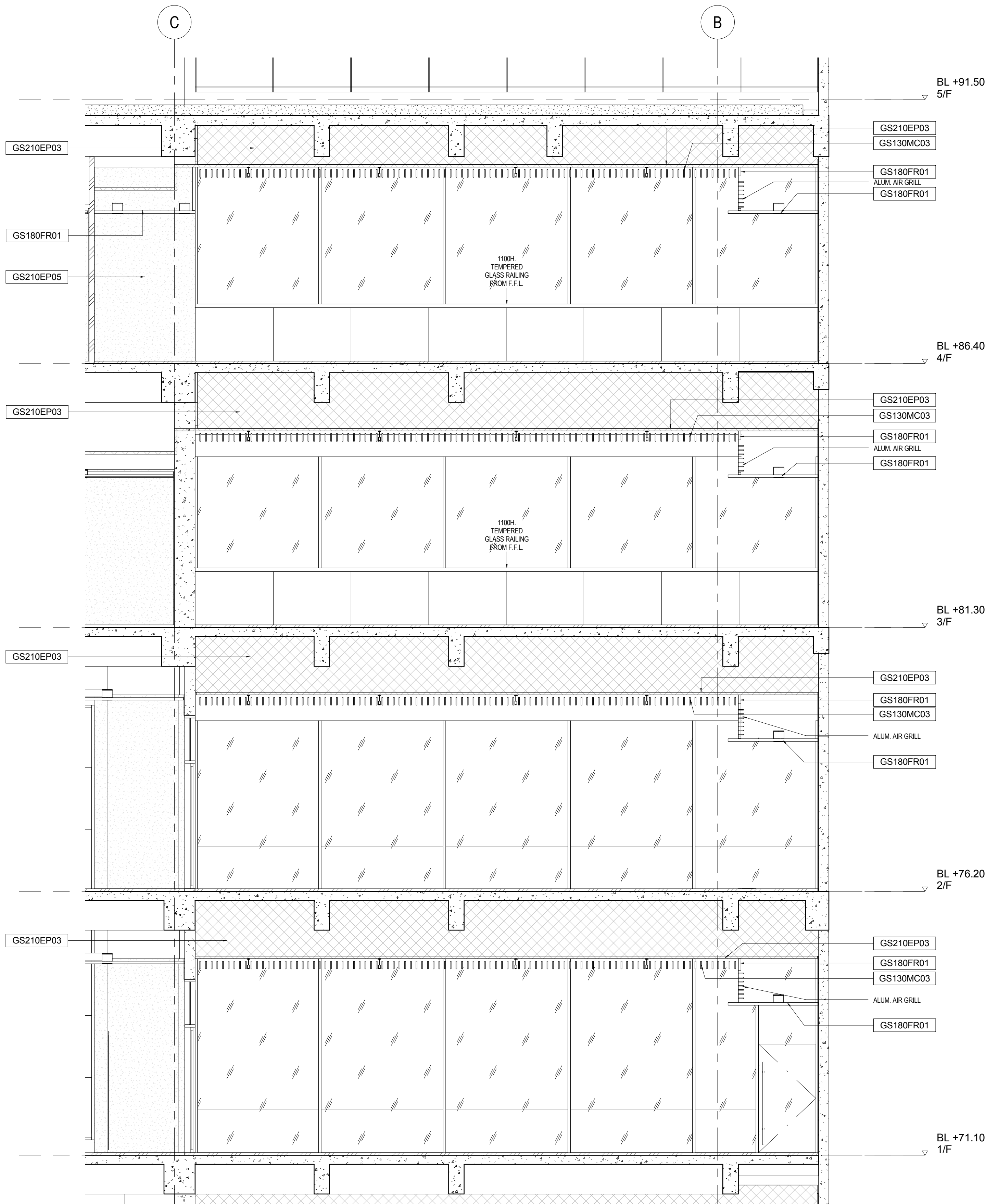
scale

1 : 50

office



1 ELEVATION
1:50



2 ELEVATION
1:50

NOTES

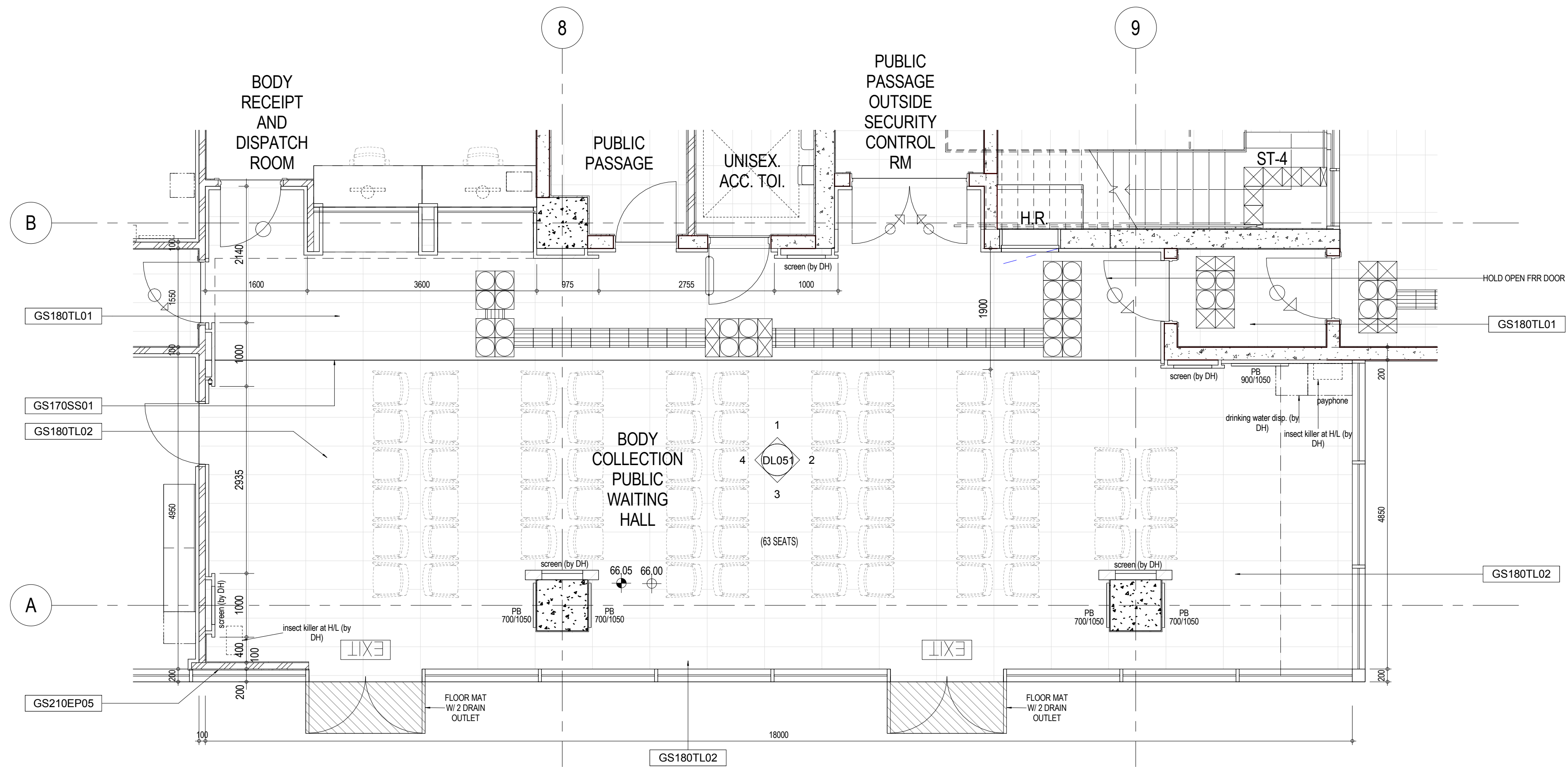
no.	date	description	initial
REVISION			
designed		name	date
drawn			11/2017
checked			11/2017
approved			11/2017
Chief Architect			11/2017
Senior Architect			11/2017
Project Architect		signed	date

contract no.
file no.
project no.
contract

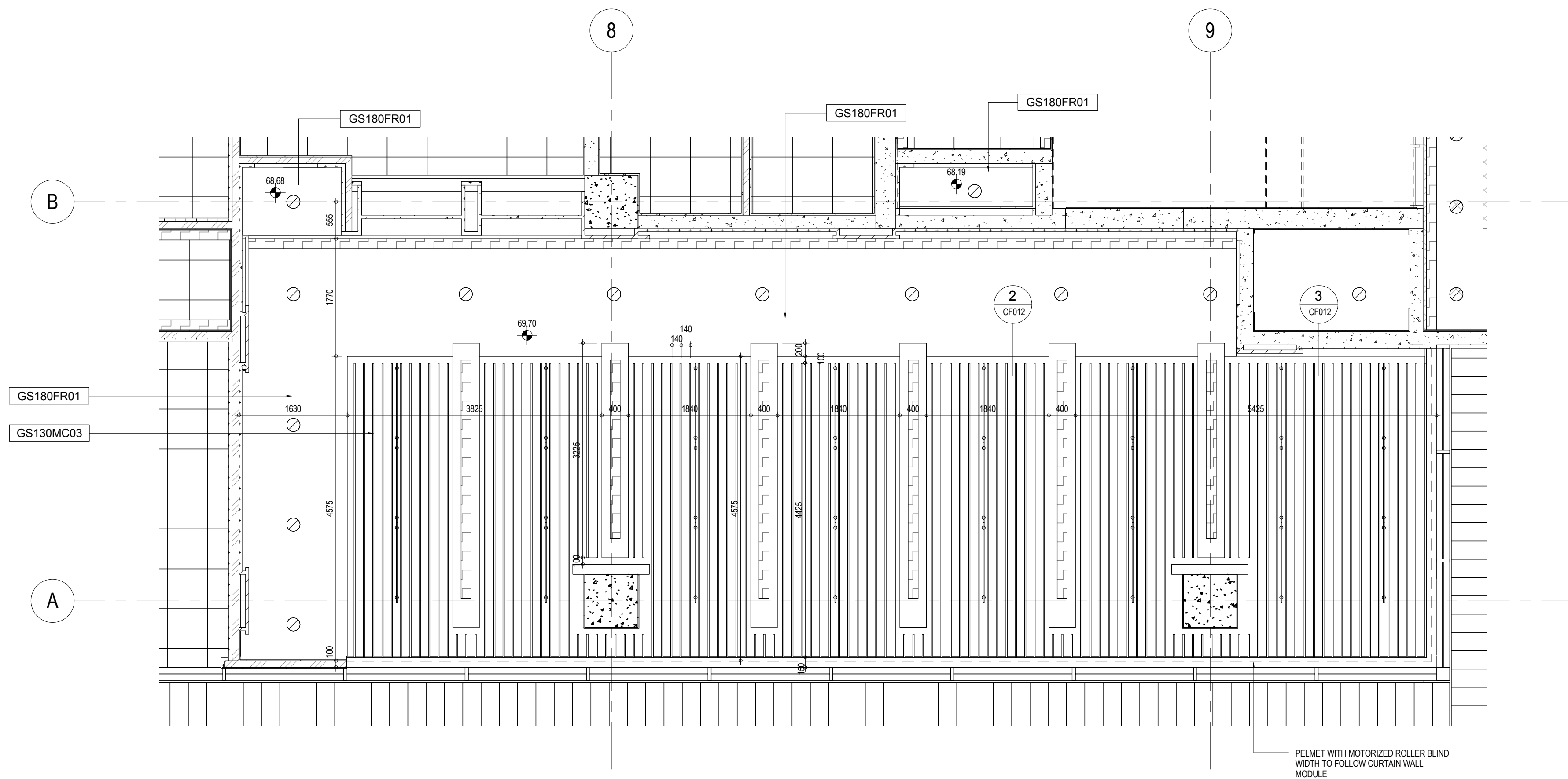
drawing title
**LAYOUTS & DETAILS - FIREMEN'S
LIFT LOBBY OF LIFT 5 & 6
(SHEET 6 OF 7)**

drawing no.	scale
	1 : 50

office



A BODY COLLECTION PUBLIC WAITING HALL PLAN
1 : 50



B REFLECTIVE CEILING PLAN
1 : 50

NOTES

1. NOTES REFER DWG. NO. DL001.
2. KEY NOTES LEGEND REFER DWG. NO. CA001.
3. CEILING LEGEND REFER DWG. NO. CF001.

no.	date	description	initial
REVISION			
		name	date
designed			11/2017
drawn			11/2017
checked			11/2017
approved			
Chief Architect			11/2017
Senior Architect			11/2017
Project Architect			11/2017
		signed	date
contract no.			
file no.			
project no.			
contract			

drawing title

**LAYOUT & DETAILS - BODY
COLLECTION PUBLIC WAITING
HALL AT G/F (SHEET 1 OF 2)**

drawing no.

scale

1 : 50

office

