

Appendix F – Codification for EMSD BIM Model Naming Convention

Table of Content

| | | |
|-----------|--|-----------|
| 1. | Introduction..... | 1 |
| 2. | Codes for Fields 3.2, 5 And 7..... | 1 |
| 2.1 | Arrangement of the Codes for Fields 3.2, 5 and 7 | 1 |
| 2.2 | BIM Model Naming Examples | 6 |
| 3. | Other Codes from BH..... | 8 |
| 3.1 | Codes for Field 4.1 – Location..... | 8 |
| 3.2 | Codes for Field 4.2 – Sub-location (Levels) | 9 |
| 3.3 | Codes for Field 5.1 – Discipline | 9 |
| 3.4 | Codes for Field 5.2 – Sub-discipline..... | 9 |
| 3.5 | Codes for Field 6.1 – Type..... | 10 |
| 3.6 | Codes for Field 6.2 – Characteristic..... | 10 |
| 4. | Federation Strategy..... | 11 |

List of Tables

| | |
|---|----|
| Table 1-1 Description of Naming Fields for BIM Model | 1 |
| Table 2-1 Codes for Field 3.2, 5 and 7 (sorted by EMSD System No.)..... | 1 |
| Table 2-2 List of BIM Models Naming for Asset Information Model (AIM) and Project Information Model (PIM) | 6 |
| Table 3-1 Abbreviation Codes for Field 4.1 – Location | 8 |
| Table 3-2 Abbreviation Codes for Field 4.2 – Sub-location (Levels)..... | 9 |
| Table 3-3 Abbreviation Codes for Field 5.1 – Discipline..... | 9 |
| Table 3-4 Abbreviation Codes for Field 6.1 – Type | 10 |
| Table 3-5 Abbreviation Codes for Field 6.2 – Characteristic | 10 |

List of Figures

| | |
|--|----|
| Figure 2-1 Example of Using the Naming Fields for EMSD Project | 6 |
| Figure 4-1 Federation for EMSD Project..... | 11 |

1. INTRODUCTION

The codifications listed in this Appendix are for EMSD's BIM model naming convention that has been aligned with Appendix IV – Common Codes for Naming of DEVB BIM Harmonisation Guidelines for Works Departments (BH). If/when discrepancies exist, this Appendix shall be followed. Below Table describes the naming fields of EMSD BIM model.

Table 1-1 Description of Naming Fields for BIM Model

| Field No. | Information Container ID Field | Sub-field No. | Obligation | Field Length and Format | Nature of Codification | Reference |
|-----------|---|---------------|------------|-------------------------|---|---|
| 1 | Project | N/A | M | 1-8 alpha-numeric | Building Code for AIM or EMSD-specific ¹ (contract number for PIM) | Appendix A of the BIM-AM SG for AIM or Contractor's BEP for the PIM |
| 2 | Originator | N/A | M | 3 alpha-numeric | Follow BH with exceptions ² | DEVB's Agent Responsible Codes (ARC) or EMSD assigned unique code |
| 3 | Volume (and System when applicable) | 3.1 | M | 1-3 alpha-numeric | EMSD-specific ¹ | Contractor's BEP |
| | | 3.2 | O | 1-3 alpha-numeric | Follow BH | Sections 2 of this Appendix |
| 4 | Location (and Sub-location when applicable) | 4.1 | M | 1-4 alpha-numeric | Block; EMSD-specific ¹ | Section 3.11 of this Appendix and Contractor's BEP |
| | | 4.2 | O | 1-2 alpha-numeric | Level; Follow BH | Section 錯誤! 找不到參照來源。 of this Appendix |
| 5 | Discipline (and Sub-discipline when applicable) | 5.1 | M | 1-2 alphabetic | Follow BH | Sections 2 and 3.3 of this Appendix |
| | | 5.2 | O | 1-2 alphabetic | Follow BH | Section 2 of this Appendix |

| Field No. | Information Container ID Field | Sub-field No. | Obligation | Field Length and Format | Nature of Codification | Reference |
|----------------|---|---------------|------------|-------------------------|----------------------------|------------------------------|
| 6 | Type (and Characteristic when applicable) | 6.1 | M | 1-2 alphabetic | Follow BH | Section 3.5 of this Appendix |
| | | 6.2 | O | 1 alphabetic | Follow BH | Section 3.6 of this Appendix |
| 7 ³ | Sequential Number | 7 | O | 3 numeric | EMSD-specific ¹ | Section 2 of this Appendix |

Remarks:

M – Mandatory

O – Optional

- ¹ For codes whose nature of codification is EMSD-specific, EMSD may specify the codes for Contractor or Contractor shall propose the codes to EMSD for approval. The approved codes shall be documented in Contractor's BIM Execution Plan (BEP).
- ² For Field 2 (Originator), if the Contractor is not listed in ARC, EMSD should assign a unique code, which shall be documented in Contractor's BIM Execution Plan (BEP).
- ³ Field 7 is used for identifying a BIM model file from other identical BIM models' filenames.
- ⁴ NA should be inputted for Field 3.1 that represents "All zones" or "Whole building".

2. CODES FOR FIELDS 3.2, 5 AND 7

2.1 Arrangement of the Codes for Fields 3.2, 5 and 7

The codes below for Fields 3.2, 5 and 7 are extracted from BH and mapped to EMSD E&M equipment for Contractor to follow. If additional code is required, Contractor shall propose the codes to EMSD for approval. Approved codes shall be documented in Contractor's BIM Execution Plan (BEP).

Table 2-1 Codes for Field 3.2, 5 and 7 (sorted by EMSD System No.)

| EMSD System No. | Field 3.2 | Definition of Field 3.2 | Field 5.1 | Definition of Field 5.1 | Field 5.2 | Definition of Field 5.2 | Field 7 | Definition of Field 7 | Remarks |
|-----------------|-----------|-------------------------|-----------|-------------------------|-----------|--|---------|--|--|
| 01 | BD | Building | BS | Building Services | LE | Lift & Escalator | | | |
| 02 | BD | Building | BS | Building Services | LV | LV Switchboard | | | |
| 03 | BD | Building | BS | Building Services | EG | Emergency Generator | | | |
| 04 | BD | Building | BS | Building Services | HA | Heating, ventilation, and air conditioning | 040 | Heating, ventilation, and air conditioning-Air Side (AS) | If the size of model is too large, it is suggested to separate the water-side and air-side models for HVAC system. |
| 04 | BD | Building | BS | Building Services | HA | Heating, ventilation, and air conditioning | 041 | Heating, ventilation, and air conditioning-Water Side (WS) | |
| 05 | BD | Building | BS | Building Services | BL | Boiler System | | | |
| 06 | BD | Building | BS | Building Services | FP | Filtration Plant | | | |
| 07 | BD | Building | FS | Fire Services | | | | | Please note that Fire services installation shall be an individual discipline under Field 5.1 |

| EMSD System No. | Field 3.2 | Definition of Field 3.2 | Field 5.1 | Definition of Field 5.1 | Field 5.2 | Definition of Field 5.2 | Field 7 | Definition of Field 7 | Remarks |
|------------------------|------------------|--------------------------------|------------------|--------------------------------|------------------|--------------------------------|----------------|--|----------------|
| 08 | BD | Building | BS | Building Services | UP | Uninterrupted Power Supply | | | |
| 09 | BD | Building | BS | Building Services | BA | Burglar Alarm | 090 | Burglar Alarm and Security Installation (Access Control system) (ACS) | |
| 09 | BD | Building | BS | Building Services | BA | Burglar Alarm | 091 | Burglar Alarm and Security Installation (Burglar Alarm System) (BAS) | |
| 09 | BD | Building | BS | Building Services | BA | Burglar Alarm | 092 | Burglar Alarm and Security Installation (CCTV & Intercom System) (CCTVI) | |
| 09 | BD | Building | BS | Building Services | BA | Burglar Alarm | 093 | Burglar Alarm and Security Installation (Smart Card System) (SCS) | |
| 09 | BD | Building | BS | Building Services | BA | Burglar Alarm | 094 | Burglar Alarm and Security Installation (Call Alarm System) (CAS) | |
| 09 | BD | Building | BS | Building Services | BA | Burglar Alarm | 095 | Burglar Alarm and Security Installation (Videophone System) (VPS) | |

| EMSD System No. | Field 3.2 | Definition of Field 3.2 | Field 5.1 | Definition of Field 5.1 | Field 5.2 | Definition of Field 5.2 | Field 7 | Definition of Field 7 | Remarks |
|------------------------|------------------|--------------------------------|------------------|--------------------------------|------------------|--------------------------------|----------------|--|----------------|
| 09 | BD | Building | BS | Building Services | BA | Burglar Alarm | 096 | Burglar Alarm and Security Installation (Keypad Lock System) (KLS) | |
| 09 | BD | Building | BS | Building Services | BA | Burglar Alarm | 097 | Burglar Alarm and Security Installation (Drop-arm Barrier) (DAB) | |
| 09 | BD | Building | BS | Building Services | BA | Burglar Alarm | 098 | Burglar Alarm and Security Installation (Electric Lock System) | |
| 10 | BD | Building | BS | Building Services | RN | Radar and Navigation System | | | |
| 11 | BD | Building | BS | Building Services | ML | Microwave Link System | | | |
| 12 | BD | Building | BS | Building Services | TD | Timing & Display System | | | |
| 13 | BD | Building | BS | Building Services | AV | Audio Video System | | | |
| 14 | BD | Building | BS | Building Services | AU | Audio Electronics System | | | |
| 15 | BD | Building | BS | Building Services | RS | Radio System | | | |

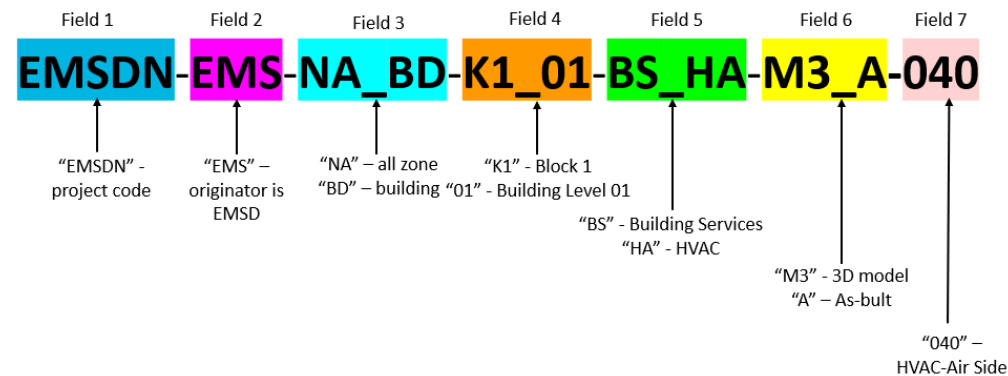
| EMSD System No. | Field 3.2 | Definition of Field 3.2 | Field 5.1 | Definition of Field 5.1 | Field 5.2 | Definition of Field 5.2 | Field 7 | Definition of Field 7 | Remarks |
|-----------------|-----------|-------------------------|-----------|-------------------------|-----------|--------------------------------------|---------|--|--|
| 16 | BD | Building | BS | Building Services | CC | Closed Circuit TV System | | | Please note that Closed Circuit TV System (CCTV) shall refer to non-burglar alarm purpose such as CCTV at LVS room, people control and thermal camera. |
| 17 | BD | Building | BS | Building Services | BR | Broadcast Reception | 170 | Broadcast Reception Installation (UHF TV System) (UTV) | |
| 17 | BD | Building | BS | Building Services | BR | Broadcast Reception | 171 | Broadcast Reception Installation (Satellite TV System) (STV) | |
| 18 | BD | Building | BS | Building Services | LG | Lighting | | | |
| 19 | BD | Building | BS | Building Services | EL | Electrical Distribution | | | |
| 20 | BD | Building | BM | Biomedical | | | | | Please note that Biomedical shall include medical gas system. |
| 21 | BD | Building | BS | Building Services | PT | Pneumatic Tube Transport | | | |
| 22 | BD | Building | BS | Building Services | IS | Internet-of-thing Installation (IoT) | | | |
| 23 | BD | Building | BS | Building Services | HV | High Voltage Power Supply | | | |

| EMSD System No. | Field 3.2 | Definition of Field 3.2 | Field 5.1 | Definition of Field 5.1 | Field 5.2 | Definition of Field 5.2 | Field 7 | Definition of Field 7 | Remarks |
|-----------------|-----------|-------------------------|-----------|----------------------------|-----------|--|---------|-----------------------|---|
| 24 | BD | Building | BS | Building Services | PX | Private Automatic Branch Exchange System | | | |
| 25 | BD | Building | BS | Building Services | AR | Automatic Refuse Collection System | | | |
| A1 | BD | Building | BS | Building Services | PL | Plumbing System | | | |
| A2 | BD | Building | BS | Building Services | DR | Drainage System | | | |
| A3 | BD | Building | BS | Building Services | LD | Water Leakage Detection System | | | |
| A4 | BD | Building | AR | Architectural | MH | Mechanical Handling & Lifting Installation | | | |
| | DCS | District Cooling System | CD | Chilled Water Distribution | | | | | for underground DCS utilities outside of building |
| | ZZ | Combined model | | | | | | | This code shall be used for combined model with multiple models at Field 3.2. |

2.2 BIM Model Naming Examples

Below example shows a project called “EMSD Headquarter (EMSDN)” under EMSD (EMS) maintenance. The site contained several building blocks within one zone (or no zoning definition is required). BIM model naming for Field 1 to 7 could be similar as below:

Figure 2-1 Example of Using the Naming Fields for EMSD Project



BIM model file names may include:

Table 2-2 List of BIM Models Naming for Asset Information Model (AIM) and Project Information Model (PIM)

| # | BIM Model File Name | Description |
|--|--------------------------------------|---|
| Asset Information Model (AIM) for operation stage | | |
| 1 | EMSDN-EMS-NA_BD-K1_01-AR-M3_A | Building Block 1 (Level 01) Architectural 3D Model File (As-built) |
| 2 | EMSDN-EMS-NA_BD-K1_01-BS_AV-M3_A | Building Block 1 (Level 01) Building Services (Audio Video System) 3D Model File (As-built) |
| 3 | EMSDN-EMS-NA_BD-K1_01-BS_CC-M3_A | Building Block 1 (Level 01) Building Services (Closed Circuit TV System) 3D Model File (As-built) |
| 4 | EMSDN-EMS-NA_BD-K1_01-BS_DR-M3_A | Building Block 1 (Level 01) Building Services (Drainage) 3D Model File (As-built) |
| 5 | EMSDN-EMS-NA_BD-K1_01-BS_HA-M3_A-040 | Building Block 1 (Level 01) Building Services (Heating, ventilation, and air conditioning-Air Side (AS)) 3D Model File (As-built) |

| # | BIM Model File Name | Description |
|--|--|--|
| Asset Information Model (AIM) for operation stage | | |
| 6 | EMSDN-EMS-NA_BD-K1_01-BS_LE-M3_A | Building Block 1 (Level 01) Building Services (Lift & Escalator) 3D Model File (As-built) |
| 7 | EMSDN-EMS-NA_BD-K1_01-BS_LG-M3_A | Building Block 1 (Level 01) Building Services (Lighting) 3D Model File (As-built) |
| 8 | EMSDN-EMS-NA_BD-K1_01-BS_PL-M3_A | Building Block 1 (Level 01) Building Services (Plumbing) 3D Model File (As-built) |
| 9 | EMSDN-EMS-NA_BD-K1_01-BS_UP-M3_A | Building Block 1 (Level 01) Building Services (Uninterrupted Power Supply) 3D Model File (As-built) |
| 10 | EMSDN-EMS-NA_BD-K1_01-BM-M3_A | Building Block 1 (Level 01) Biomedical 3D Model File (As-built) |
| 11 | EMSDN-EMS-NA_BD-K1_01-FS-M3_A | Building Block 1 (Level 01) Fire Services 3D Model File (As-built) |
| Project Information Model (PIM) for project handover with EMSD contract number of 1087EM18M. As maximum 8 characters are allowed, the “EM” of the Contract number should be omitted as the project ID. | | |
| 12 | 108718M-EMS-NA_BD-T1_RF_BS_HA-M3_N-040 | Tower 1 (Roof) Building Services (Heating, ventilation, and air conditioning- Air Side (AS)) 3D Model File (New Works/ Proposed Works) |

3. OTHER CODES FROM BH

This section contains frequently used codes by EMSD which have been extracted from BH.

3.1 Codes for Field 4.1 – Location

Table 3-1 Abbreviation Codes for Field 4.1 – Location

| Codes from BH | Definition |
|----------------------|---------------------------------------|
| AB | Administration Building |
| AC | Ancillary Block |
| BD | Building |
| DQ | Staff Quarters |
| FB | Footbridge |
| MK | Market |
| OF | Office |
| PG | Playground |
| SB | Subway |
| CAP | Car Park |
| MB | Management Office Building |
| SV | Service Block |
| TL | Toilet |
| VC | Visitor Centre |
| E | East Wing |
| N | North Wing |
| S | South Wing |
| W | West Wing |
| K1 | Block 1 |
| K2 | Block 2 |
| T1 | Tower 1 |
| T2 | Tower 2 |
| XX ¹ | Non-specific location |
| ZZ | Multiple locations for combined model |

¹ Could be used for elements outside of building

3.2 Codes for Field 4.2 – Sub-location (Levels)

Table 3-2 Abbreviation Codes for Field 4.2 – Sub-location (Levels)

| Codes from BH | Definition |
|----------------------|--|
| B2 | Basement Level 2 |
| B1 | Basement Level 1 |
| LG | Lower Ground Floor |
| GF | Ground Floor |
| UG | Upper Ground Floor |
| ES | Reference level from engineering survey |
| 01 | Level 01 |
| 02 | Level 02 |
| ... | 2-digit for level number |
| 99 | Level 99 |
| MF | Mezzanine Floor |
| M1 | Mezzanine above level 01 |
| M2 | Mezzanine Above Level 02 |
| PL | Podium Level |
| RF | Roof |
| UR | Upper Roof |
| WB | Whole Building |
| AL | All levels (of a specific building zone) |

3.3 Codes for Field 5.1 – Discipline

Table 3-3 Abbreviation Codes for Field 5.1 – Discipline

| Codes | Definition | Underground Utilities (UU) / Above-grade (AG) |
|--------------|---|--|
| AR | Architectural | AG |
| BS | Building Services | AG |
| CD | Chilled Water Distribution | UU |
| FS | Fire Services ¹ | AG |
| ST | Structural | AG |
| ZZ | Multiple disciplines for combined model | N/A |

¹ Fire services refer to both fire services elements inside and outside of building within site boundary

3.4 Codes for Field 5.2 – Sub-discipline

Refer to Section 2.

3.5 Codes for Field 6.1 – Type

Table 3-4 Abbreviation Codes for Field 6.1 – Type

| Codes from BH | Definition |
|----------------------|---|
| CM | Combined Model (Combined Multidiscipline Model) |
| M3 | 3D Model File |

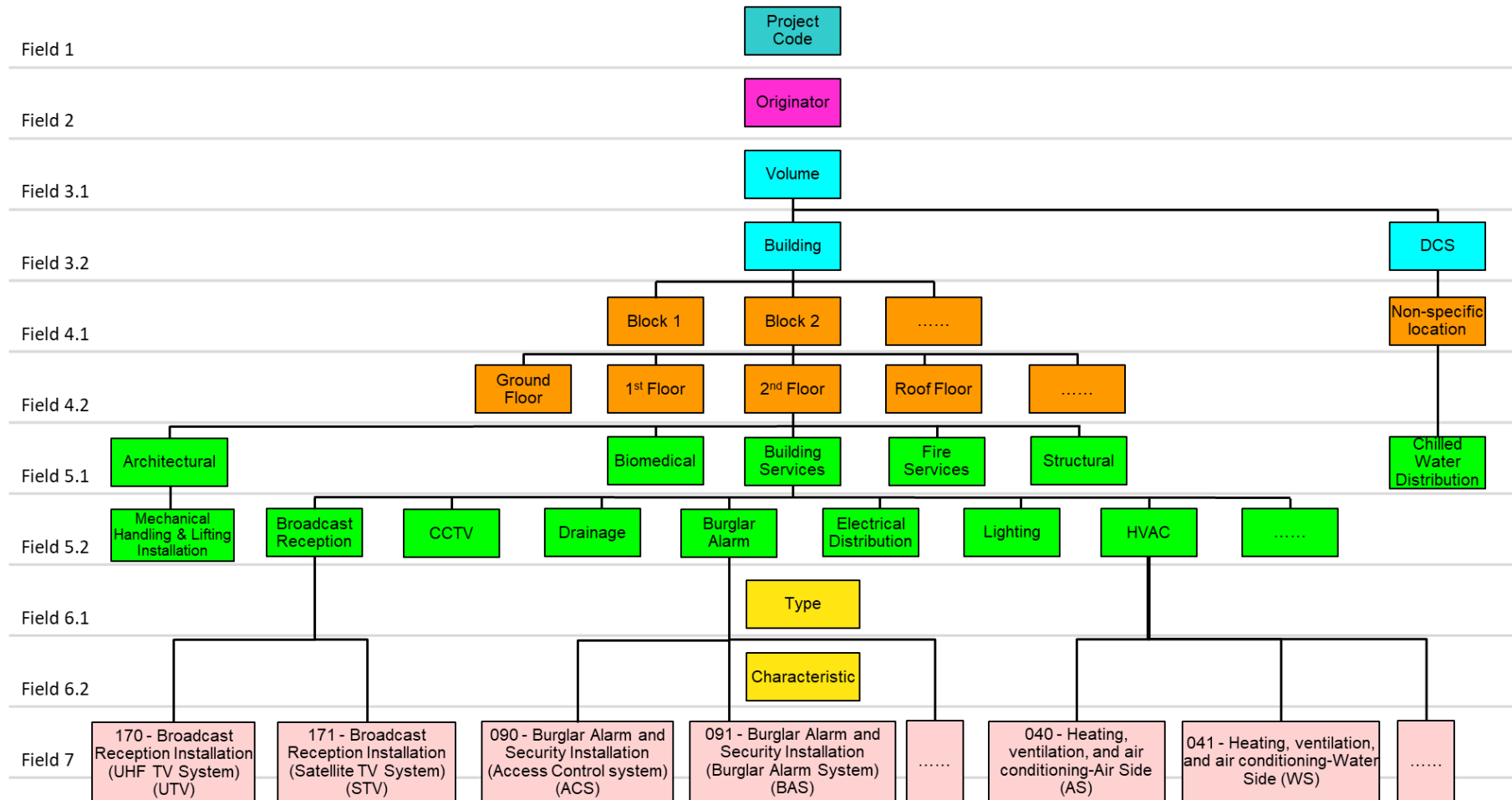
3.6 Codes for Field 6.2 – Characteristic

Table 3-5 Abbreviation Codes for Field 6.2 – Characteristic

| Codes from BH | Definition |
|----------------------|--|
| A | As-built |
| D | Demolition |
| E | Existing, to remain |
| M | Maintenance or record |
| N | New Works/ Proposed Works |
| T | Temporary Works |
| W | All Works (combination of above works) |

4. FEDERATION STRATEGY

Figure 4-1 Federation for EMSD Project



End of this Appendix