



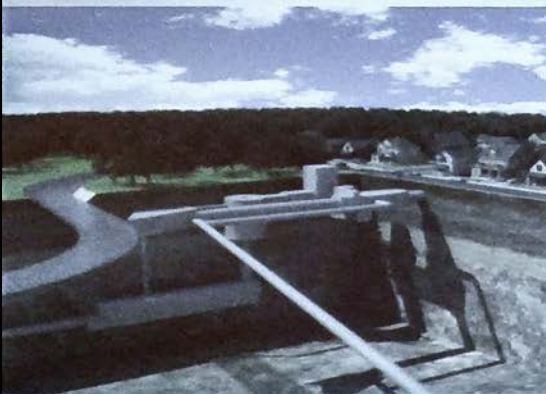
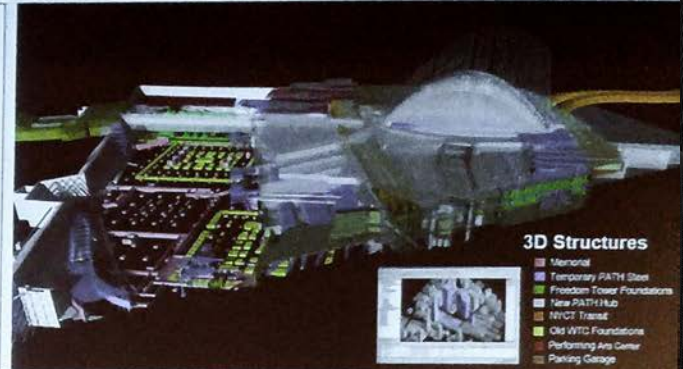
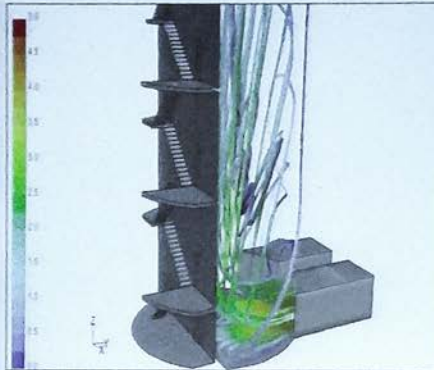
| 20161006 HKIBIM BIM for Infrastructure

# BIM for Infrastructure ?

- Horizontal and Vertical
- Above and Below Ground
- Insides and Outside
- More than just Buildings...



# People – Process – Technology – Innovation – Competition



# State of the Art ?

- Highest achievement
- Best technology
- Better process
- Greater outcomes

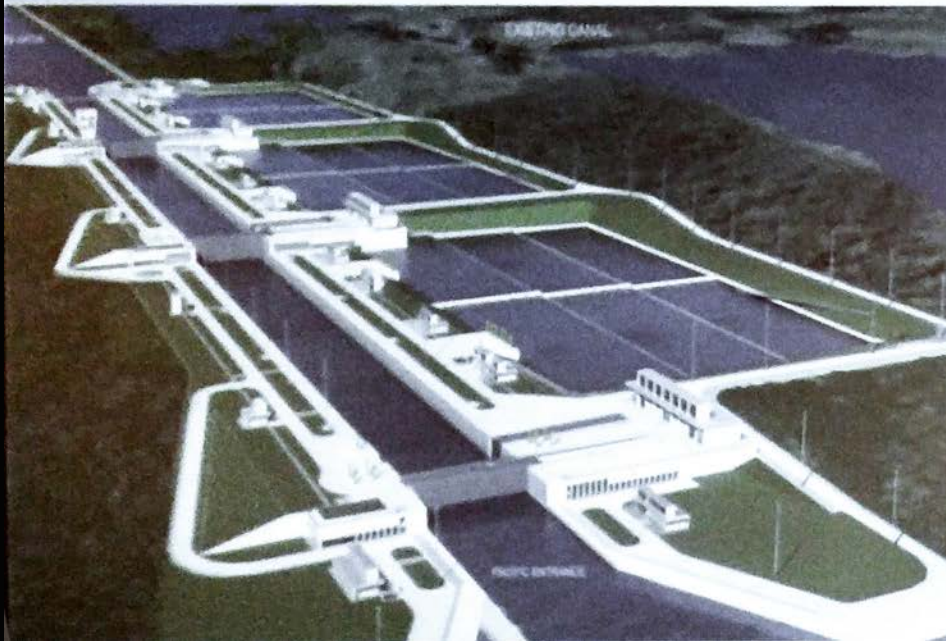


# Water Infrastructure

- Global Distributed Design Teams
- Design, Construction and Fabrication models being shared
- As-built models and “Data” into Maximo



CANAL DE PANAMÁ





# Water Infrastructure

- Revit, Civil3D, NavisWorks, BIM360
- Automated Machine Guidance, Site Layout and Control



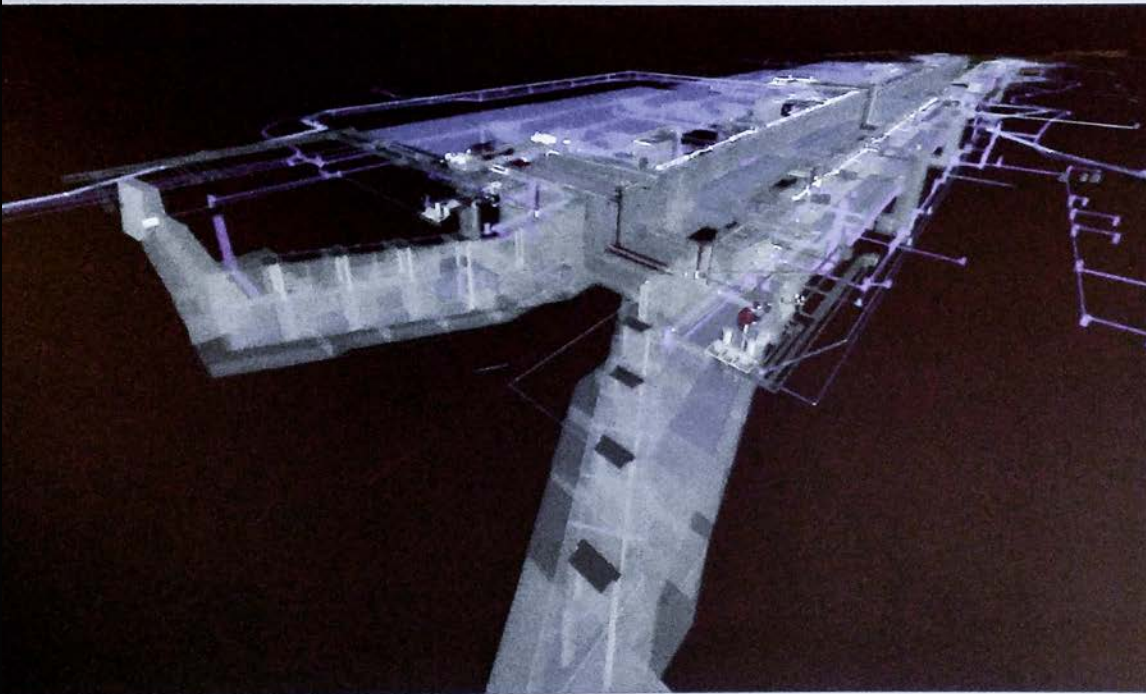
CANAL DE PANAMÁ





## Water Infrastructure

- Revit, Civil3D, NavisWorks, BIM360
- Automated Machine Guidance, Site Layout and Control





# Water Infrastructure

- 4D Scheduling, Construction, Coordination and Communication
- BIM driven by the Owner



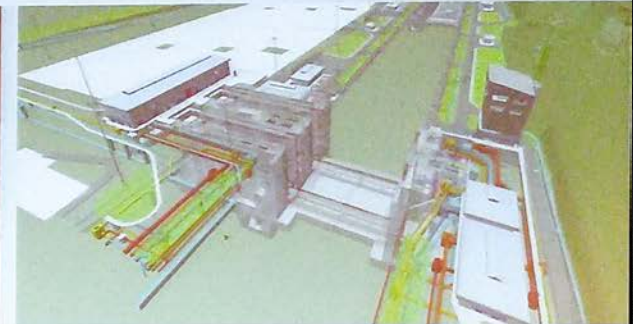
CANAL DE PANAMÁ

CONSTRUCT CANAL LOCKS  
CONSTRUCT WATER-SAVING BASINS  
EXCAVATION  
FILL / BACKFILL

WEEK 61



PANAMA CANAL EXPANSION PROGRAM

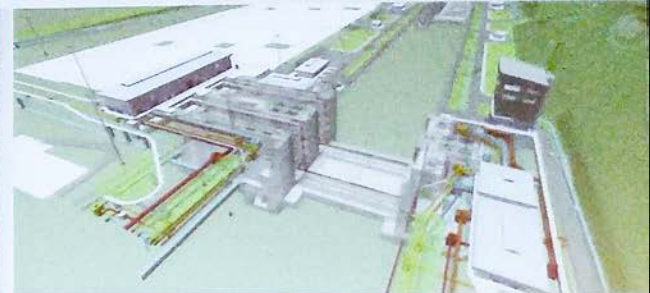
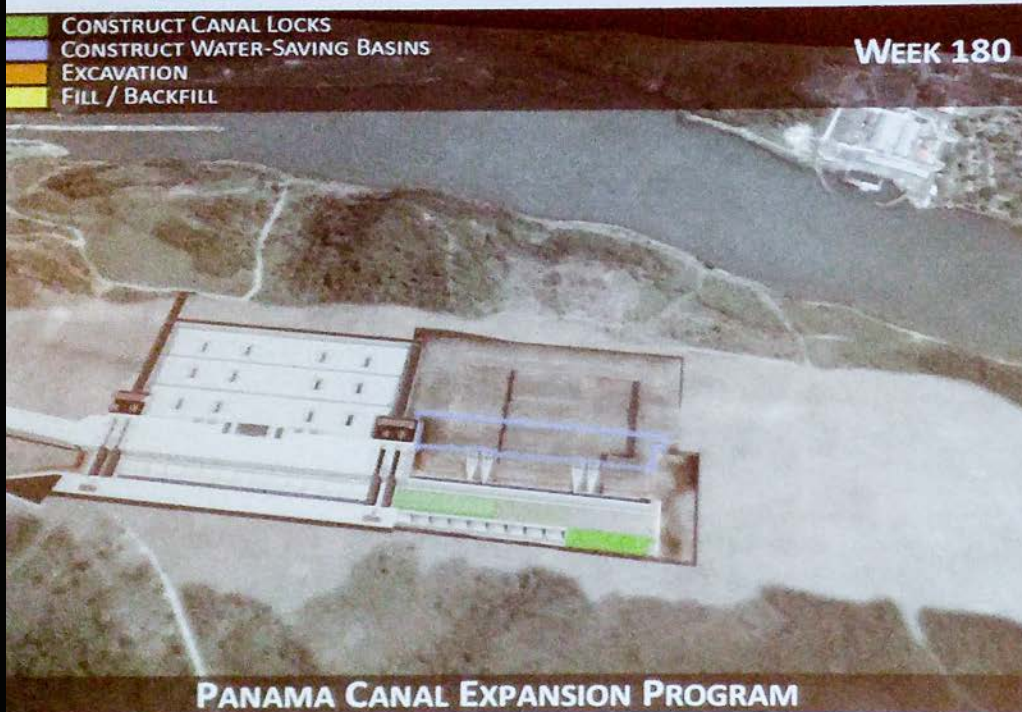


AUTODESK



# Water Infrastructure

- 4D Scheduling, Construction, Coordination and Communication
- BIM driven by the Owner



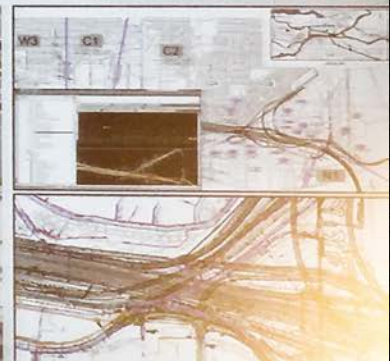
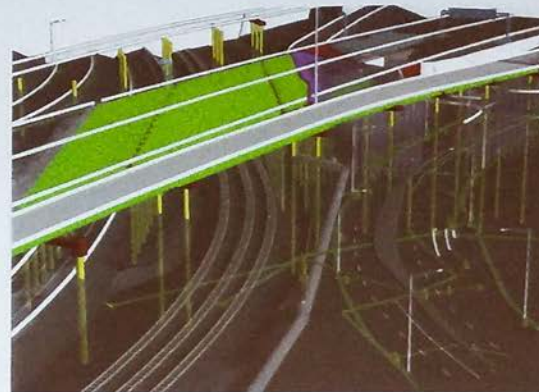
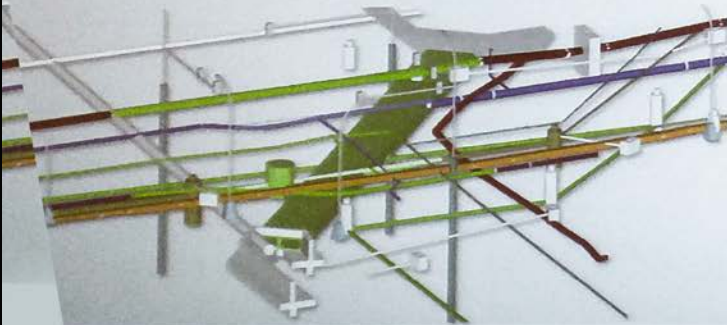


# Complex Roads & Bridges

Port Mann 1



- \$ 2.8B Design / Build
- 37 Km of Highway
- 13 Interchanges
- 42 Bridges
- 10K Drawings
- BIM Driven by Contractor

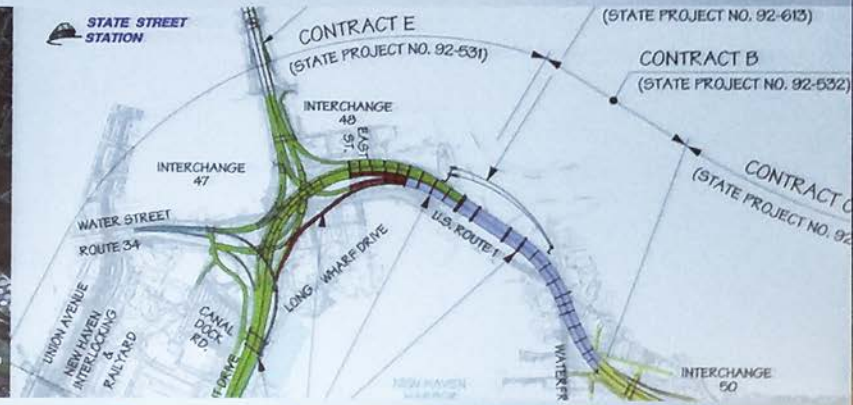




# Complex Roads & Bridges

- \$ 2.8B Design / Bid / Build
- BIM Driven by Owner

## I-95 New Haven Harbor Crossing





## Complex Roads & Bridges

- What will it look like ?

I-95 New Haven Harbor Crossing





# Complex Roads & Bridges

I-95 New Haven Harbor Crossing



- How should it be built ?







# Complex Roads & Bridges

I-95 New Haven Harbor Crossing

- 24/7 Operations - Safety – Coordination - Communication



Cranes moved to positions C1/C2



Workers on boom lifts, girder delivered in median



Full closure all lanes



Some rigging detached, right lanes opened to traffic



Girder lifted from delivery vehicle



Girder lowered into final position  
Maximum 8' into ground and temporary being lowered moved for 28.5' N/S





## Complex Roads & Bridges

I-95 New Haven Harbor Crossing

- Civil 3D and NavisWorks shave 6 Months off Owner's Schedule





# Complex Roads & Bridges

\$ 1.5B – Presidio Parkway



- 5D Modeling – 8 Contracts (DBB, DB, PPP) - Single Model Approach



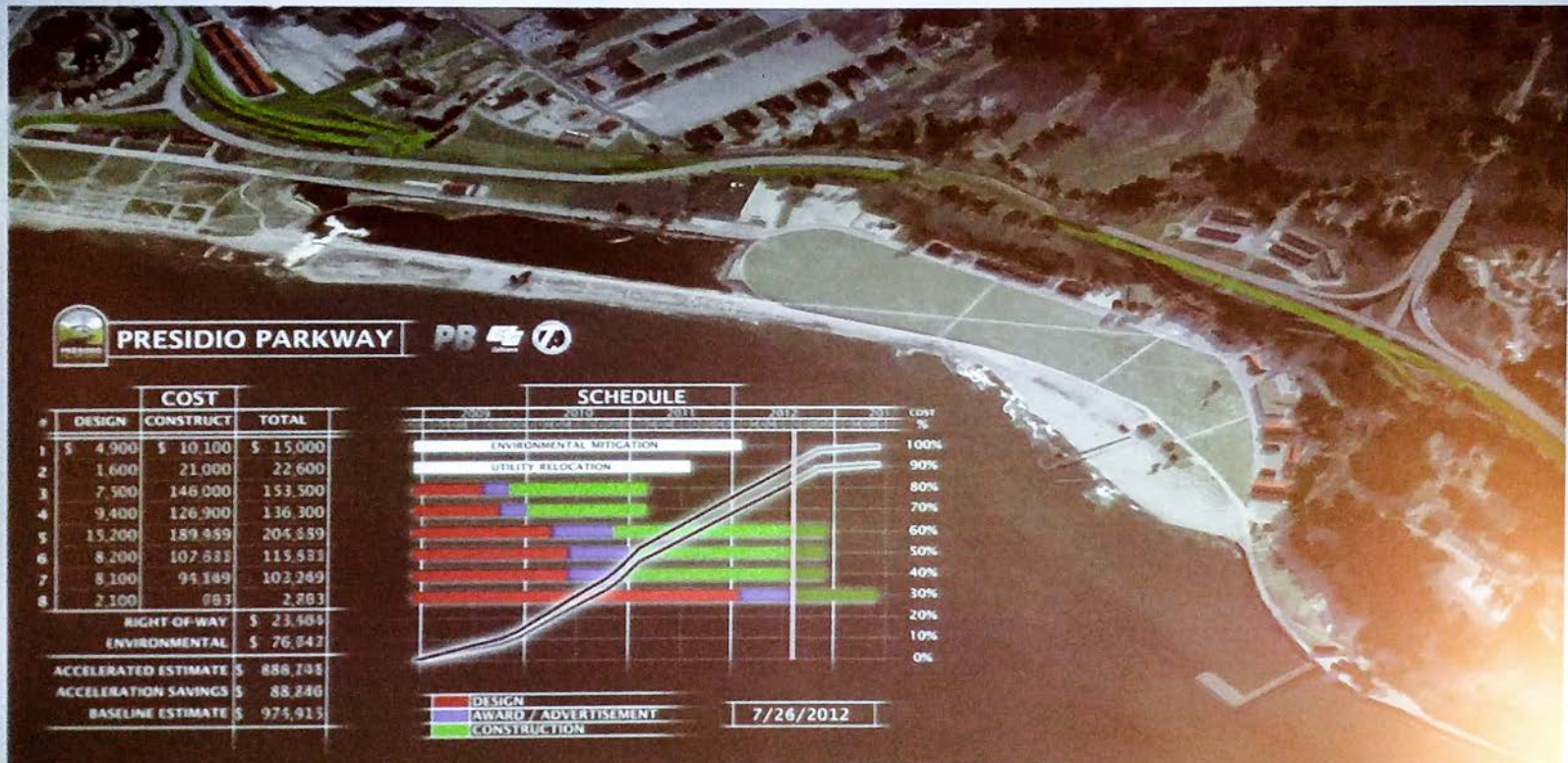


# Complex Roads & Bridges

\$ 1.5B – Presidio Parkway



- 5D Modeling – 8 Contracts (DBB, DB, PPP) - Single Model Approach





# City Models and Infrastructure Projects

City of San Francisco

**I** AUTODESK  
INFRAWORKS





# Complex Bridge Design & Construction



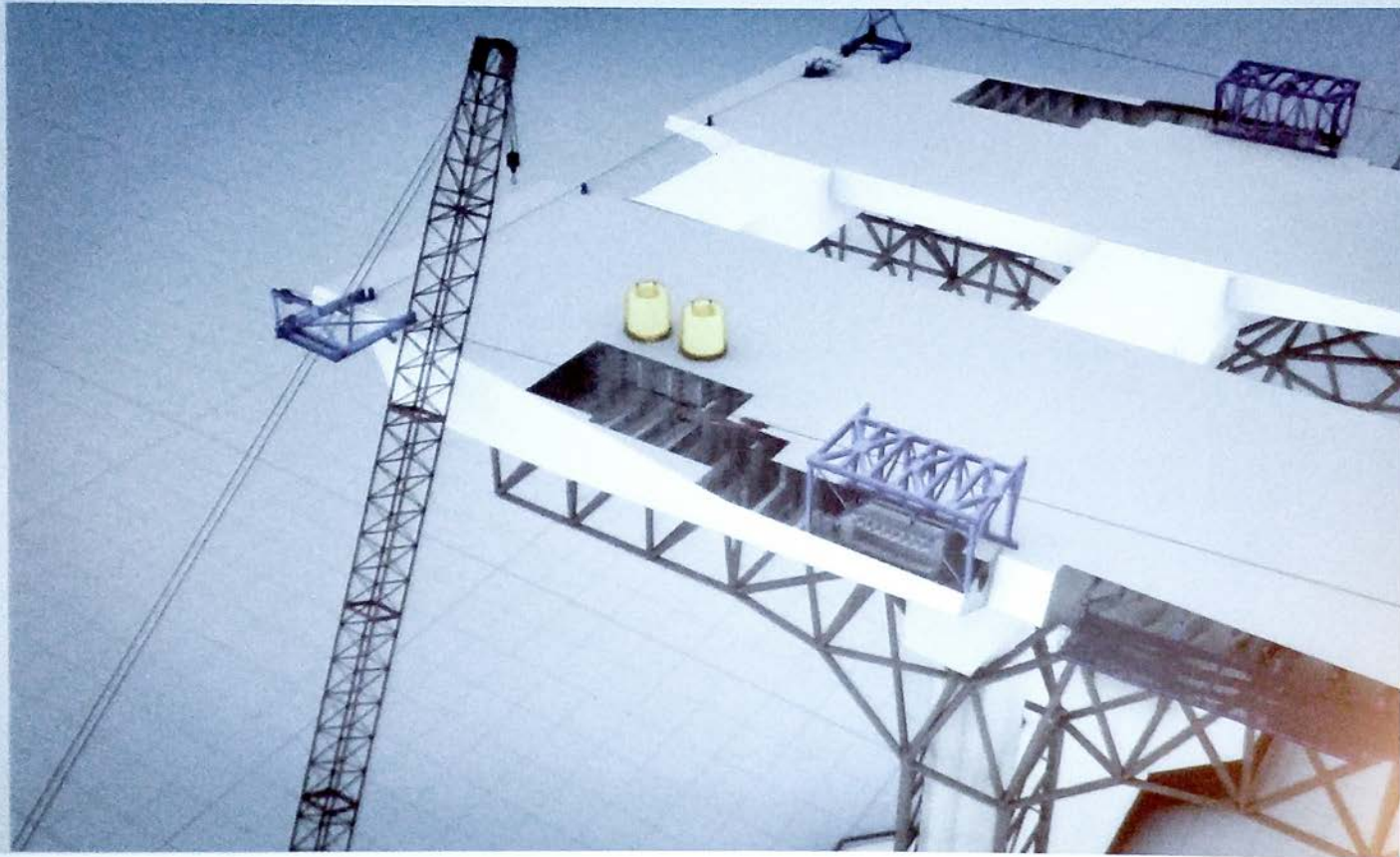


# Complex Bridge Design & Construction



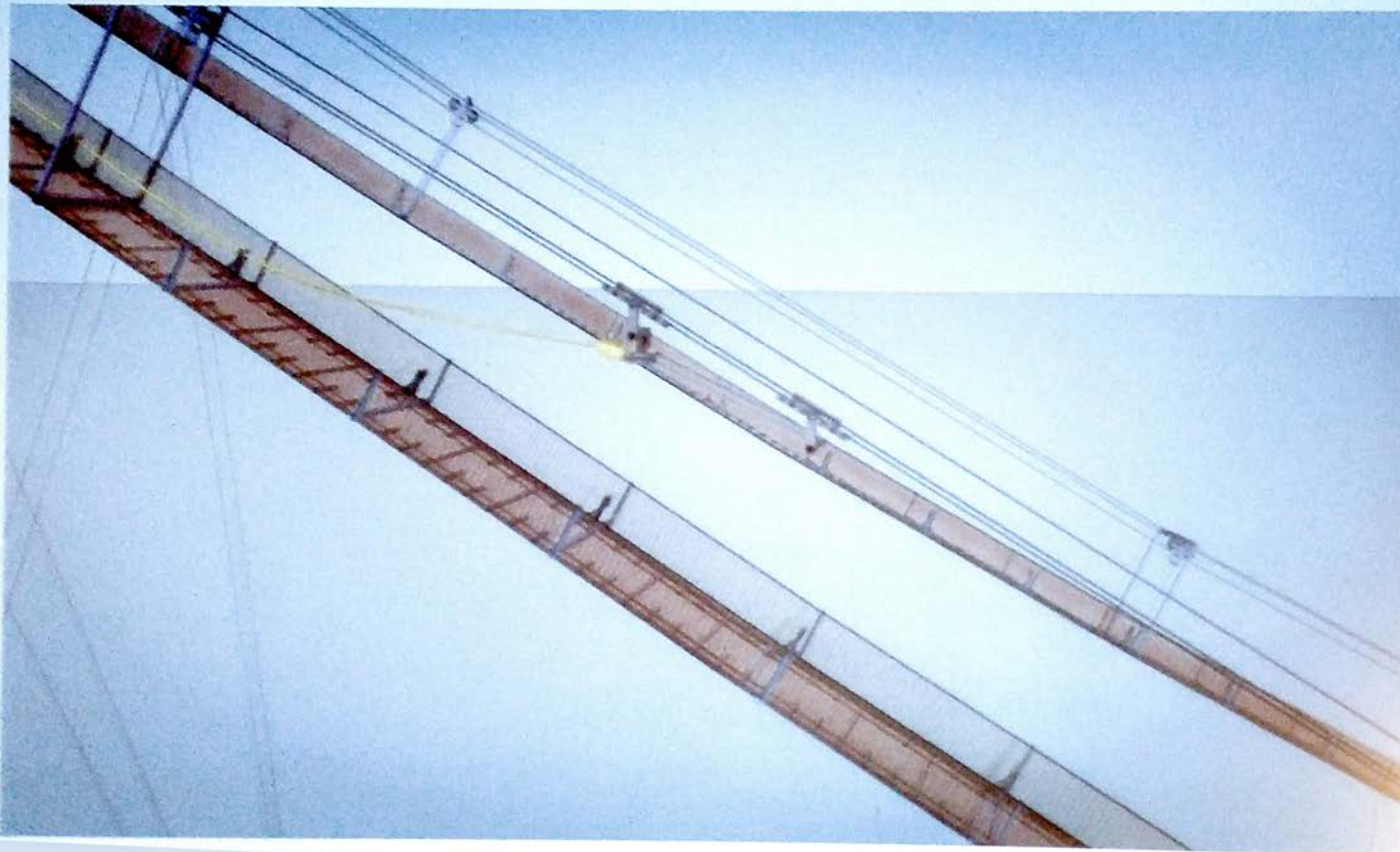


# Complex Bridge Design & Construction





# Complex Bridge Design & Construction



AUTODESK



# Bay Bridge 4D Modeling

San Francisco

 Construct New Bridge  
 Erect Temporary Supports  
 Build Detour Structures  
 Demolition

Date: June 27, 2009

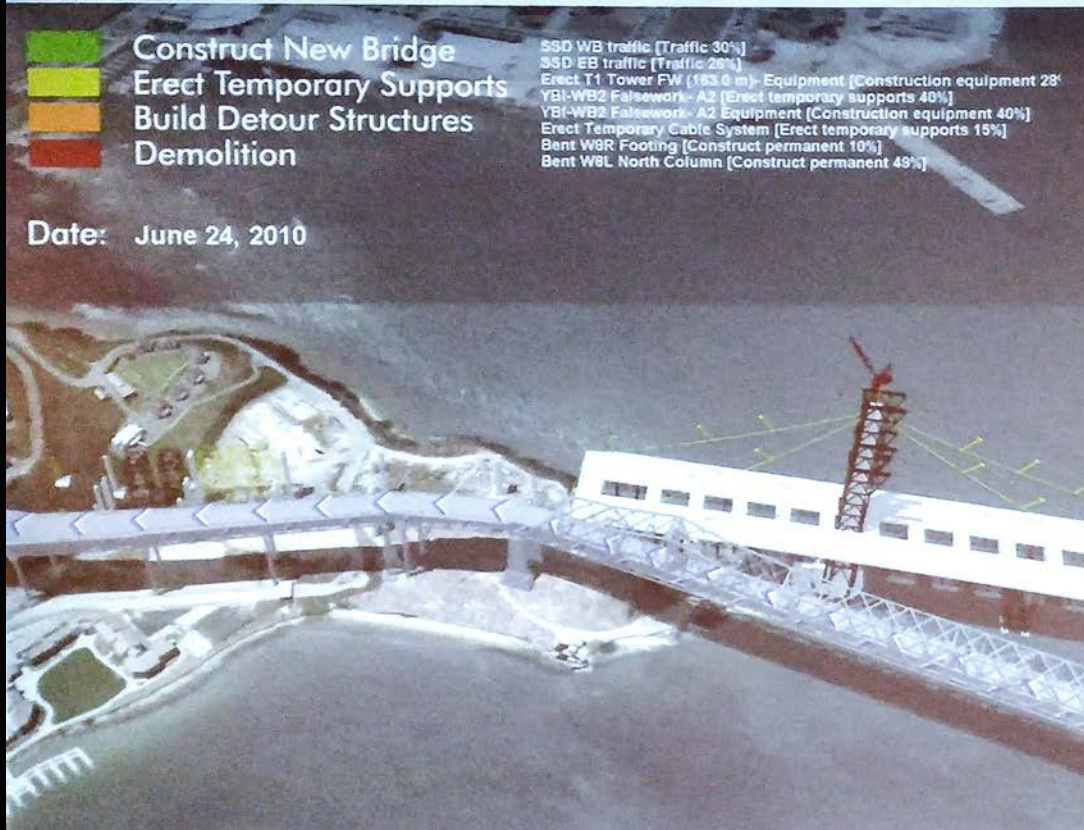
Construct OTD 1 [Construct permanent 77%]  
Construct Pier E2 Capbeam [Construct permanent 86%]  
SSD WB traffic [Traffic 2%]  
SSD EB traffic [Traffic 2%]  
Erect T1 Tower FW (109.6 m) [Erect temporary supports 96%]  
Erect T1 Tower FW (109.6 m)- Equipment [Construction equipment 96%]  
Bridge removal Span YB4 [Demolish detour structures 65%]  
Erect Truss GE-HE- Equipment [Construction equipment 50%]  
Erect Truss GE-HE [Erect temporary supports 50%]  
Erect Crossbeams CB1-CB5 [Construct permanent 50%]





# Bay Bridge 4D Modeling

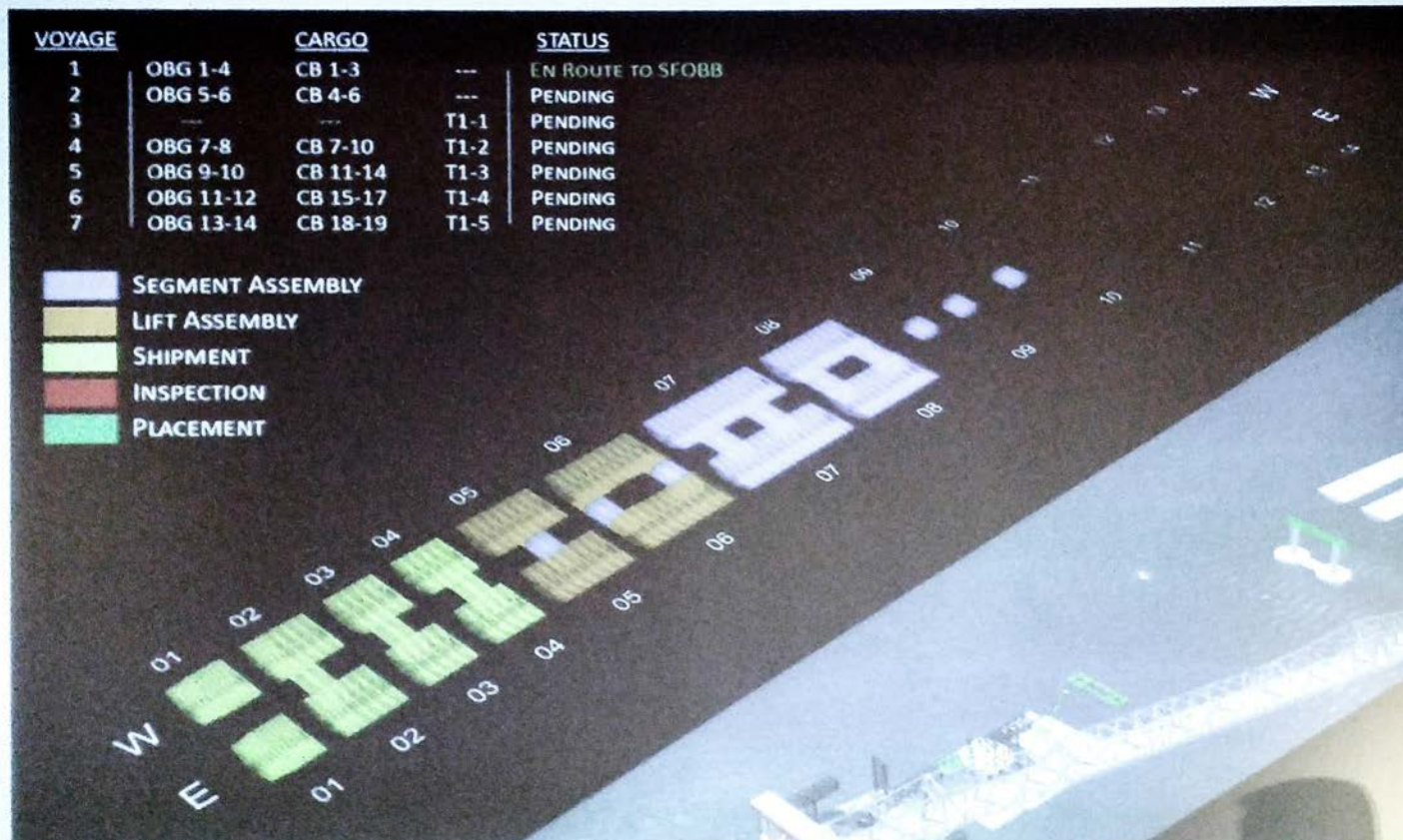
San Francisco





# Bay Bridge 4D Modeling and Pre Fabrication

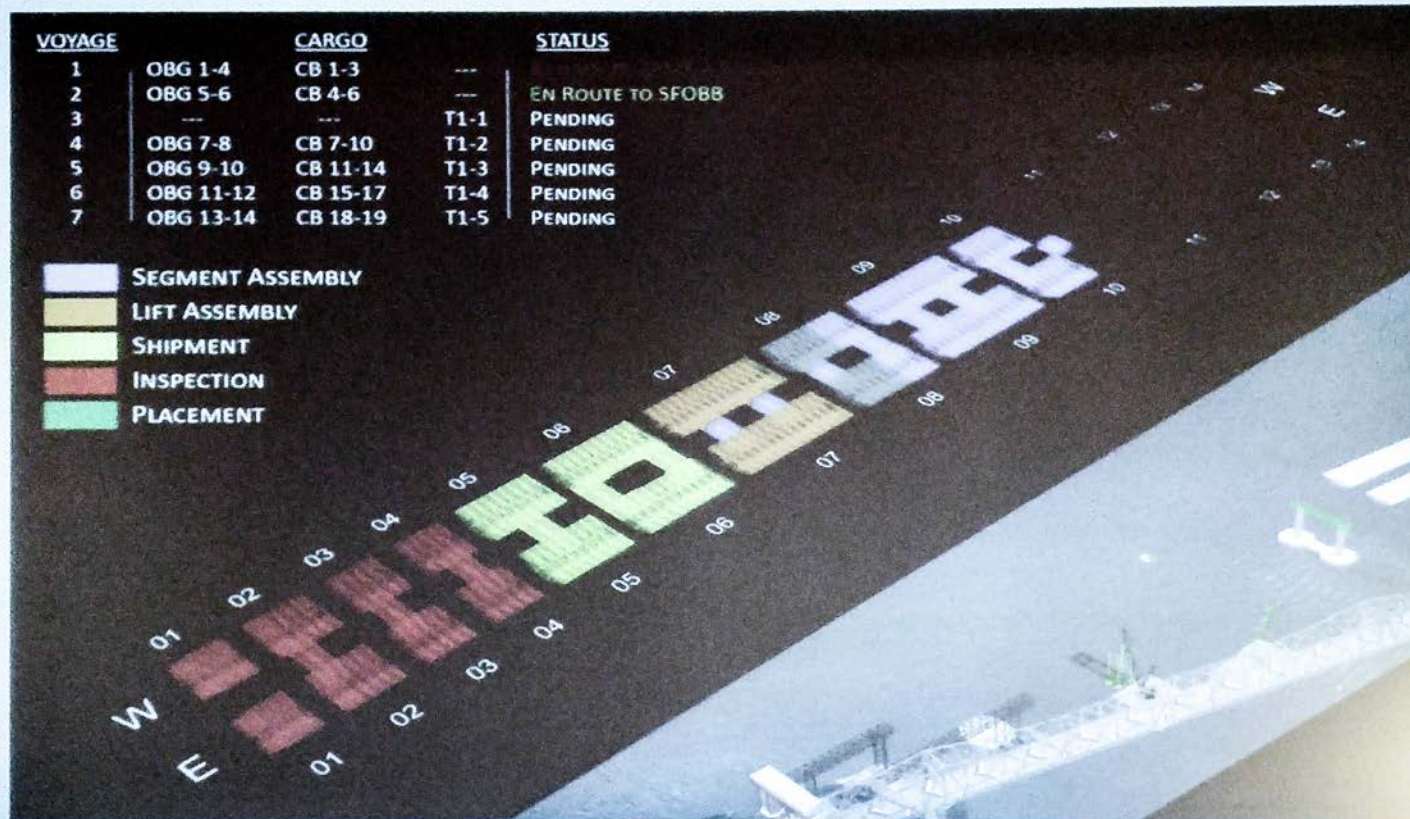
San Francisco





# Bay Bridge 4D Modeling and Pre Fabrication

San Francisco





## Rail Planning and Design

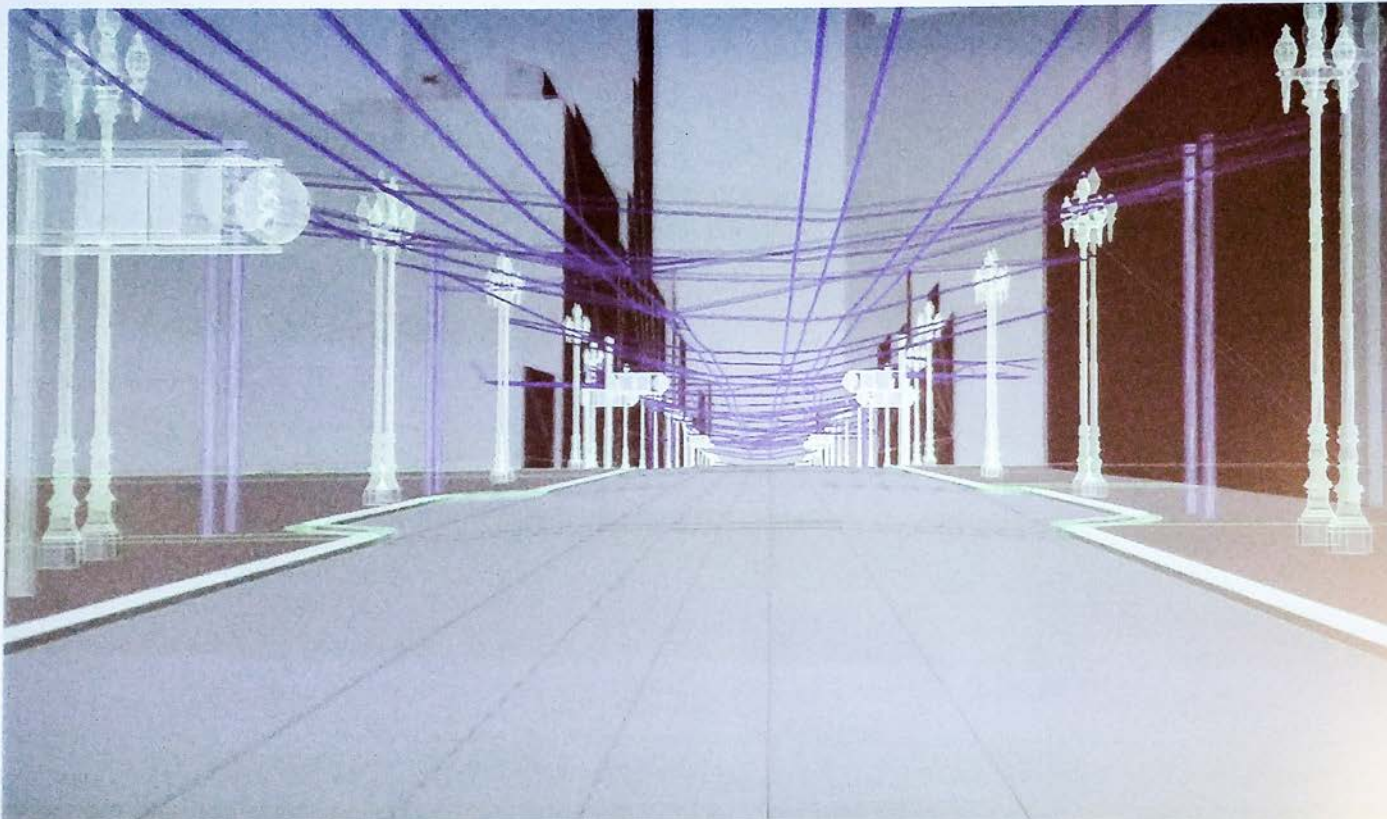
San Francisco





# Rail Planning and Design

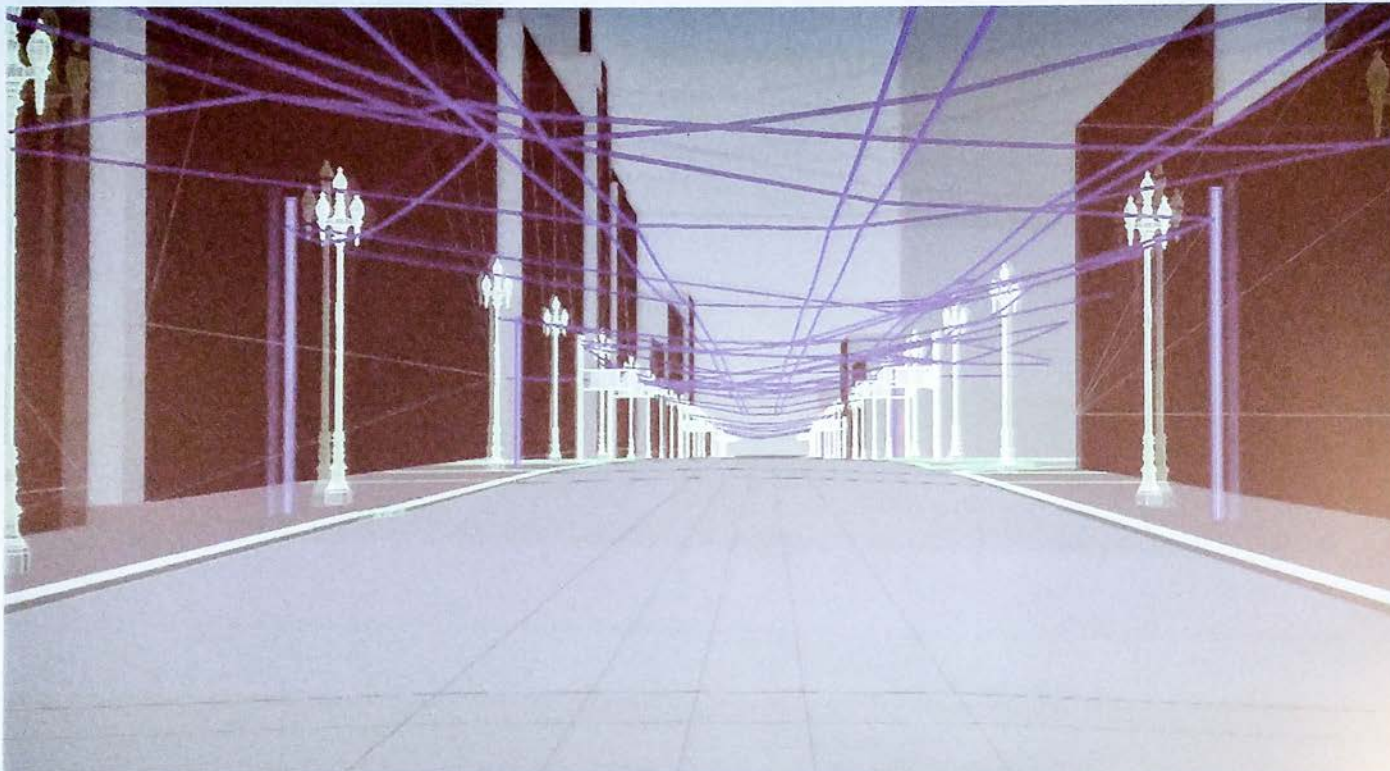
San Francisco





# Rail Planning and Design

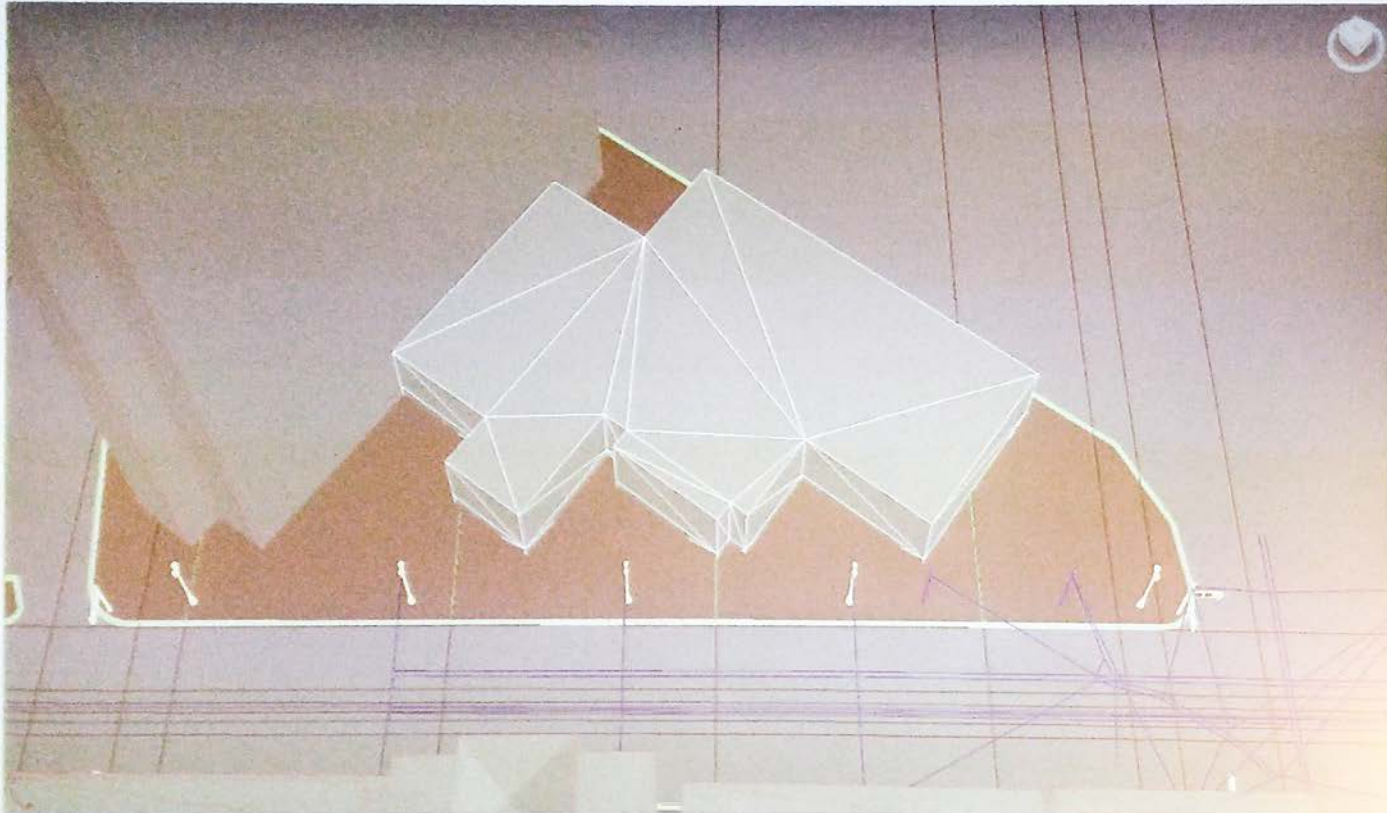
San Francisco





# Rail Planning and Design

San Francisco





# Rail Planning and Design

San Francisco





## Rail Planning and Design

San Francisco





## Rail Planning and Design

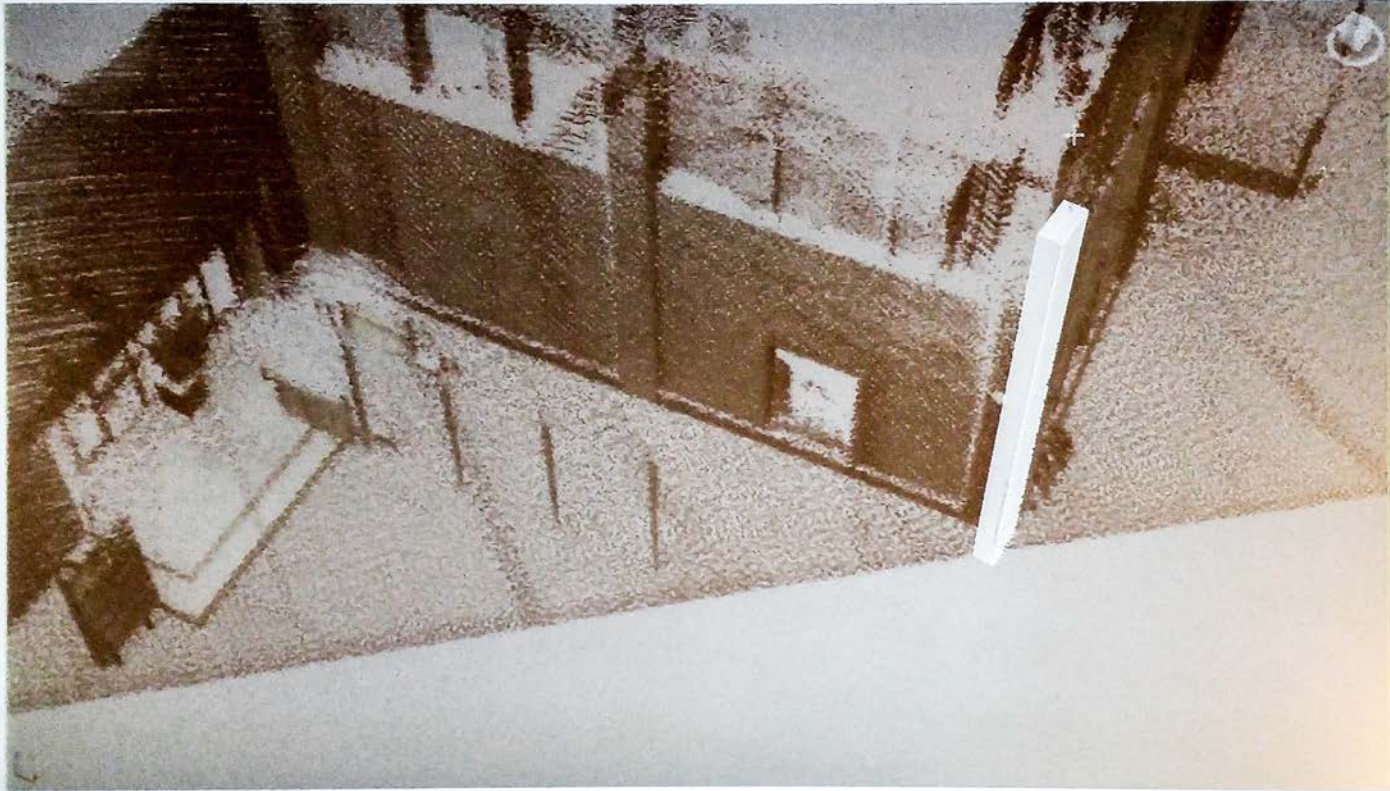
San Francisco





# Rail Planning and Design

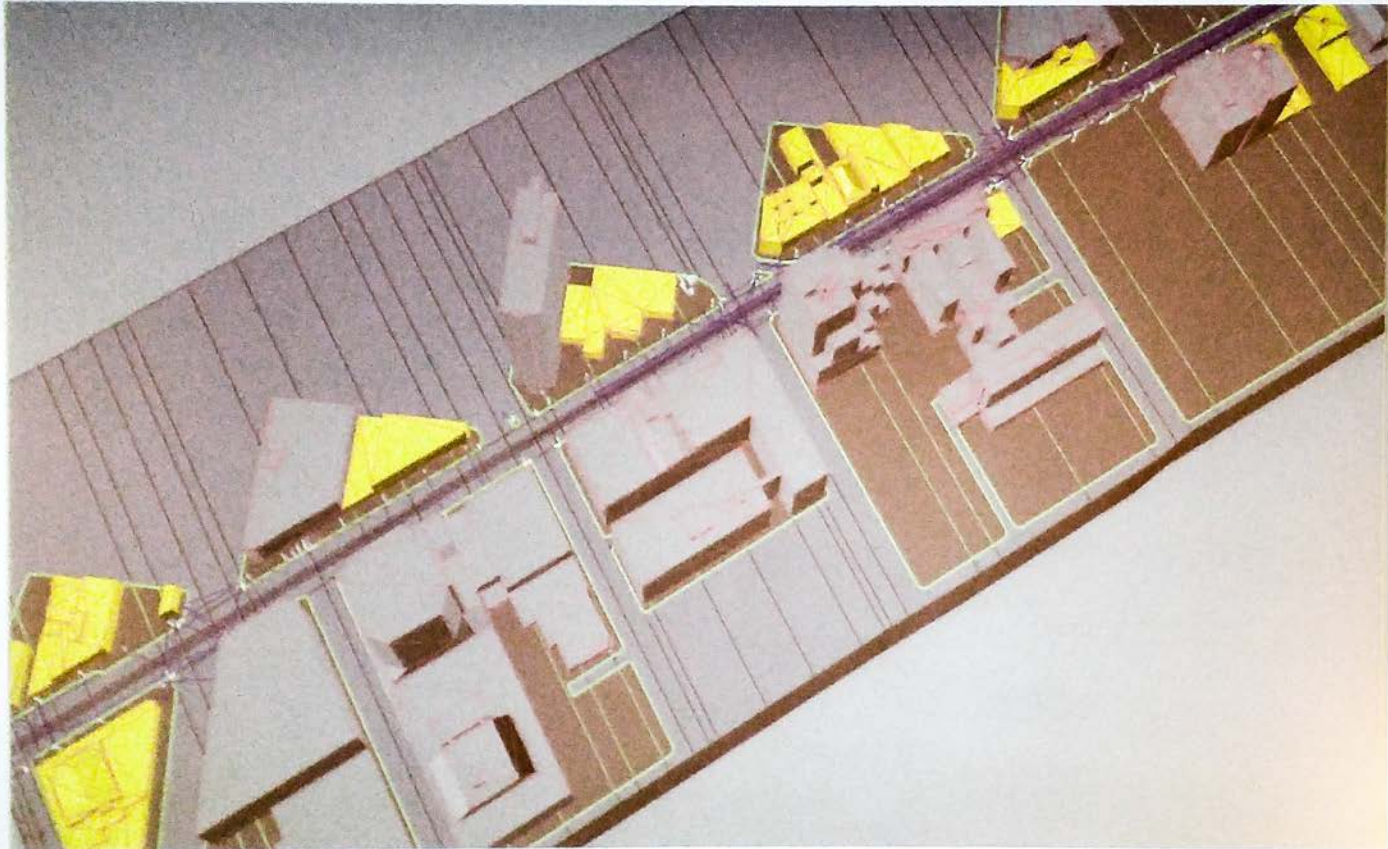
San Francisco





# Rail Planning and Design

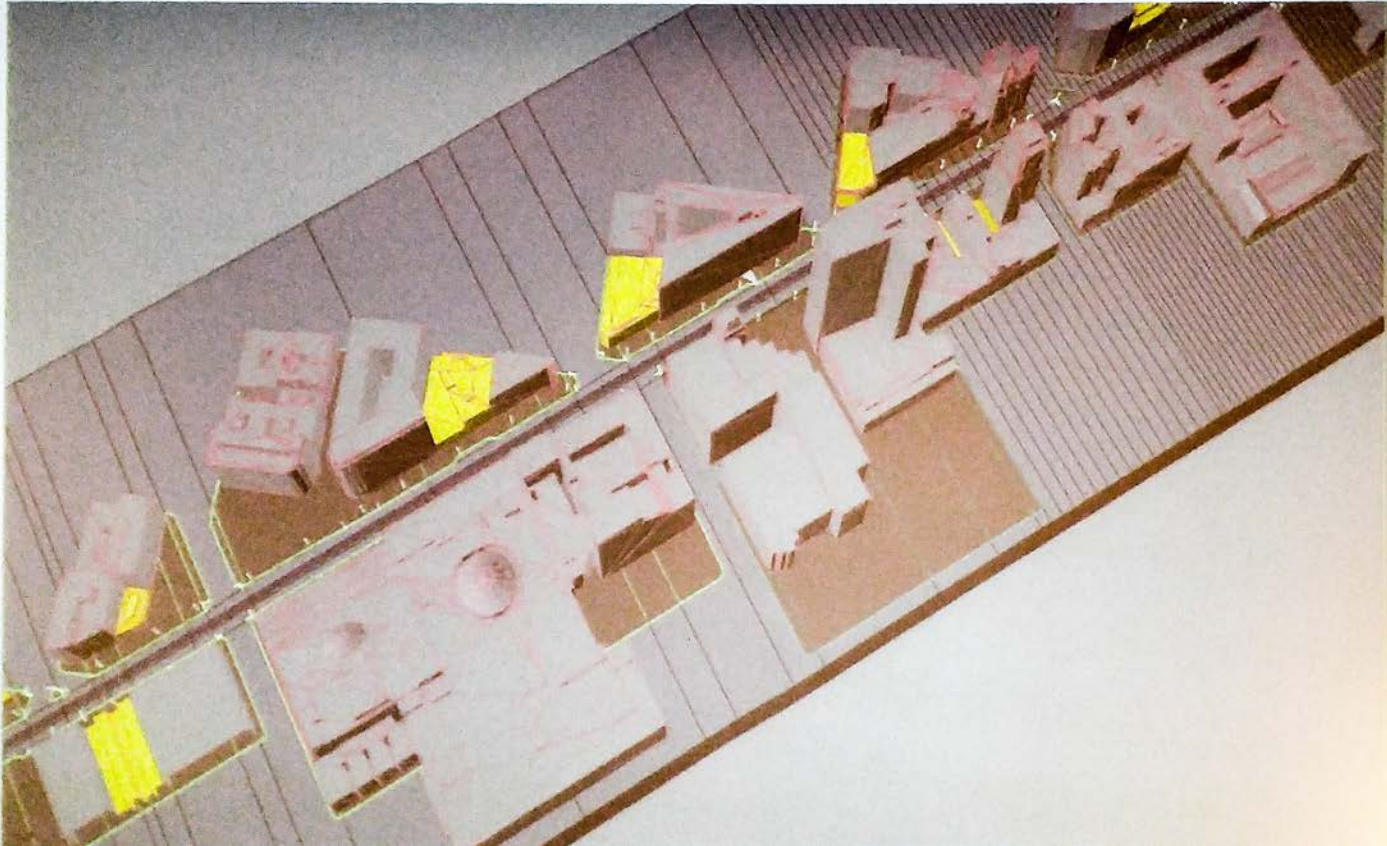
San Francisco





# Rail Planning and Design

San Francisco





# Rail Planning and Design

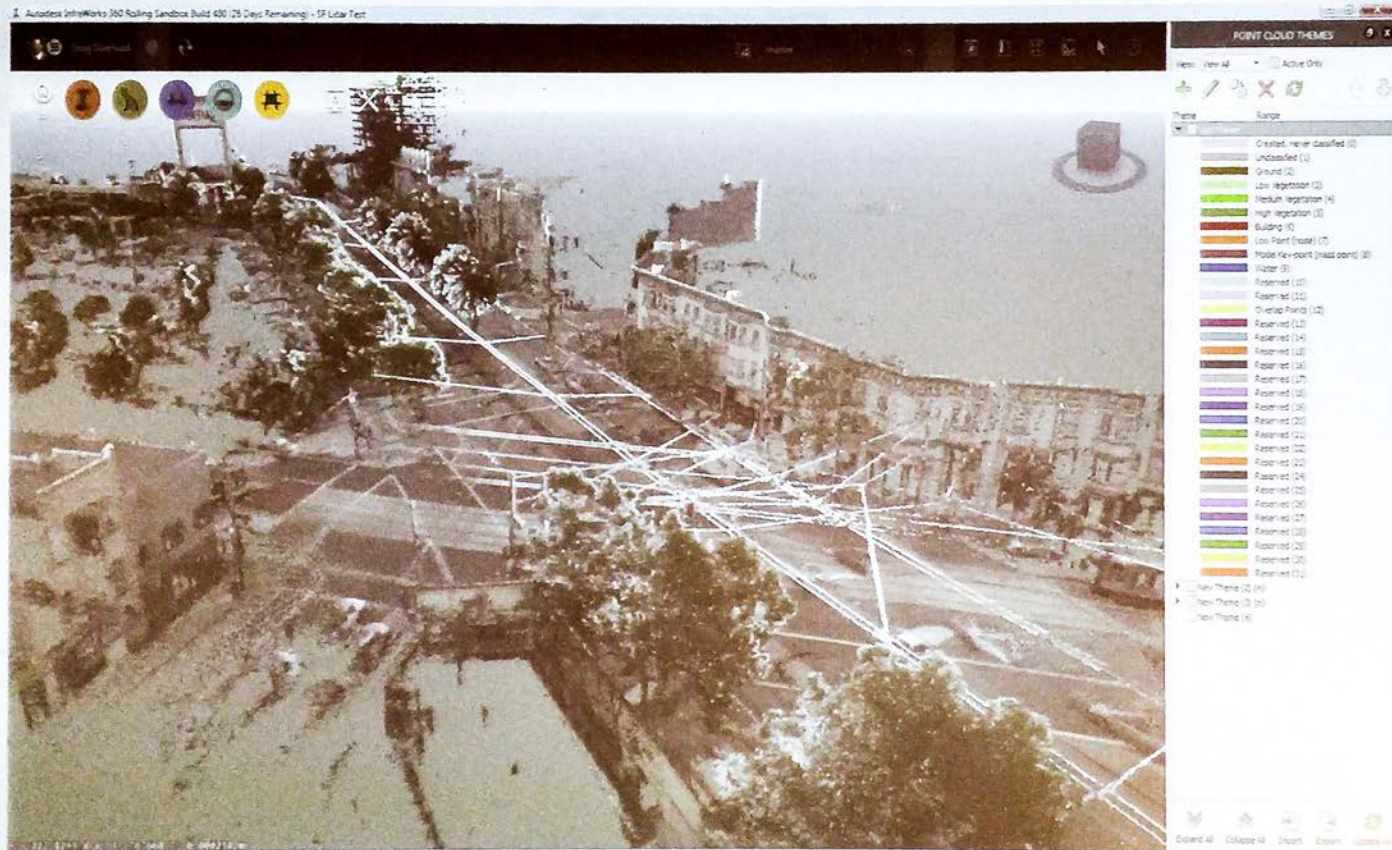
San Francisco





# ReCap - Instant Modelling

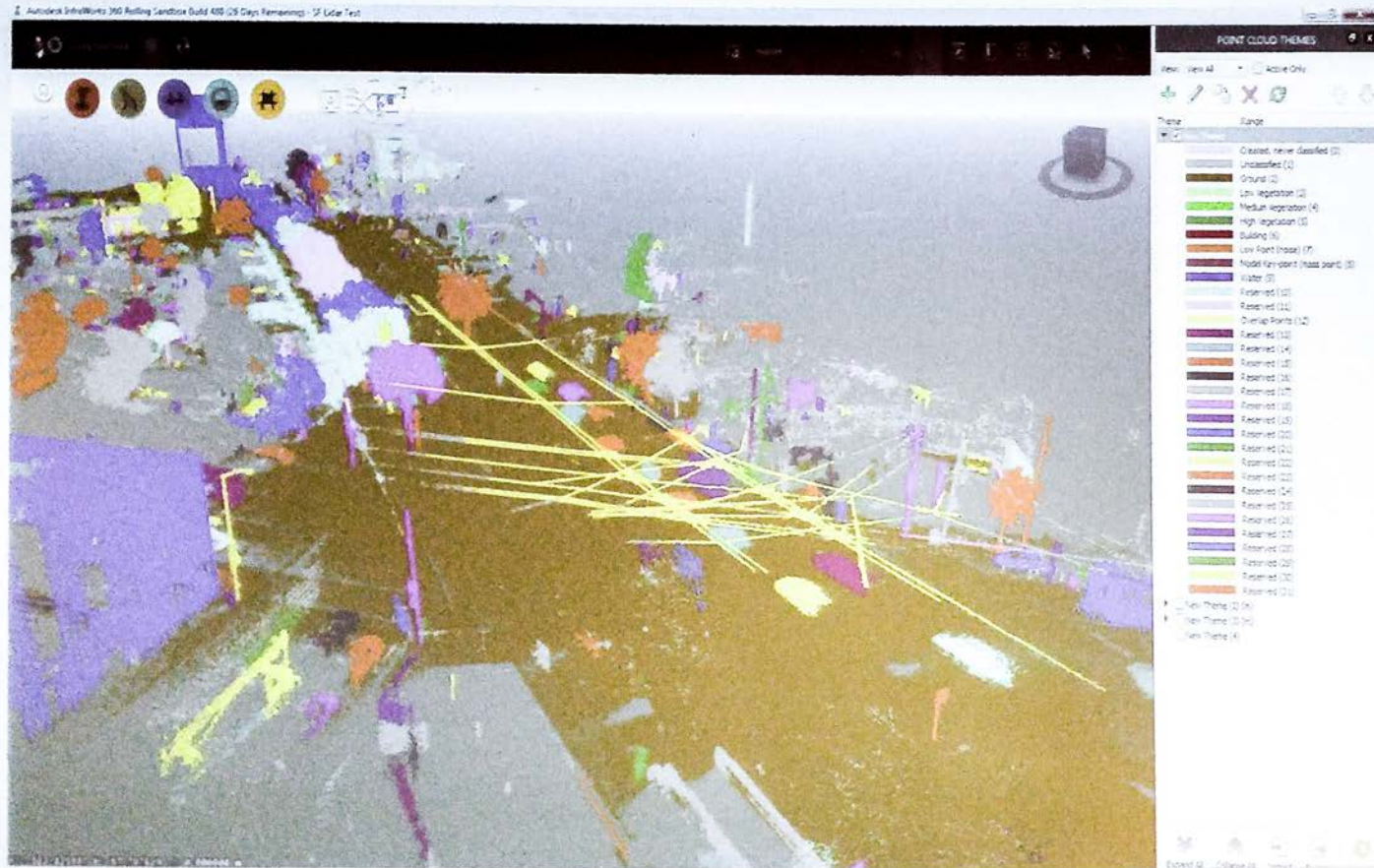
San Francisco





# InfraWorks - Automatic Classification

San Francisco

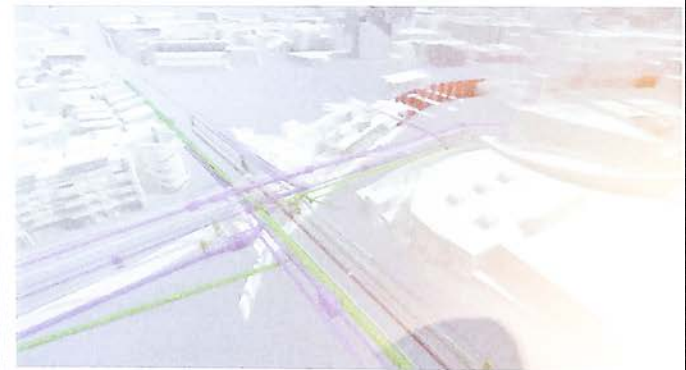




## Rail Design & Construction

Los Angeles

- ReCap, Revit, Civil3D, Navisworks, InfraWorks360, BIM360
- Tunnels, Stations, Utilities, Buildings... Entire City

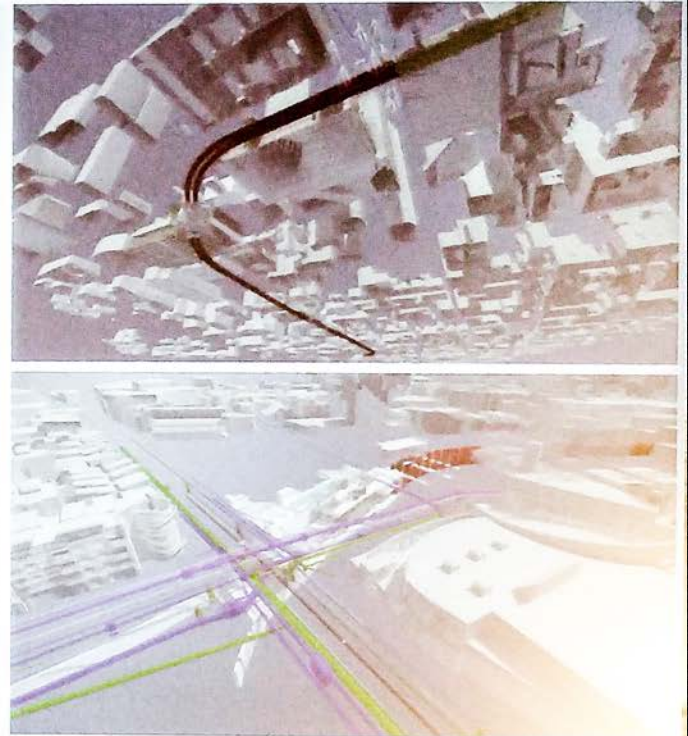




# Rail Design & Construction

Los Angeles

- ReCap, Revit, Civil3D, Navisworks, InfraWorks360, BIM360
- Tunnels, Stations, Utilities, Buildings... Entire City





# Rail Design & Construction

Los Angeles

- ReCap, Revit, Civil3D, Navisworks, InfraWorks360, BIM360
- Tunnels, Stations, Utilities, Buildings... Entire City



Autodesk

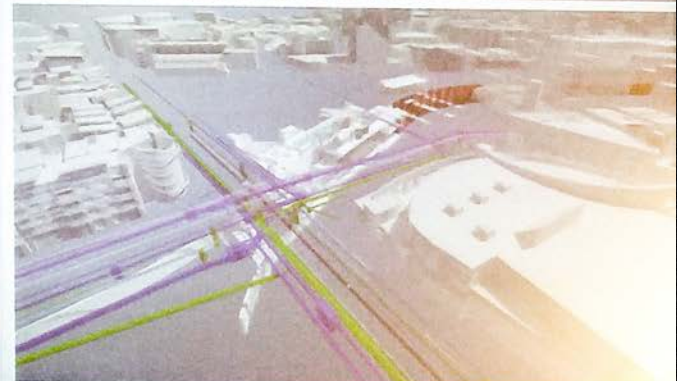
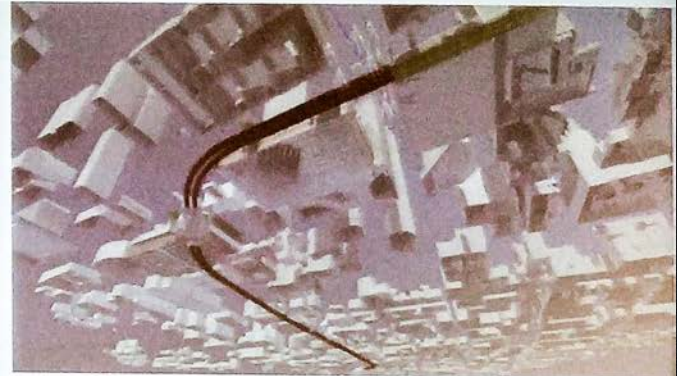
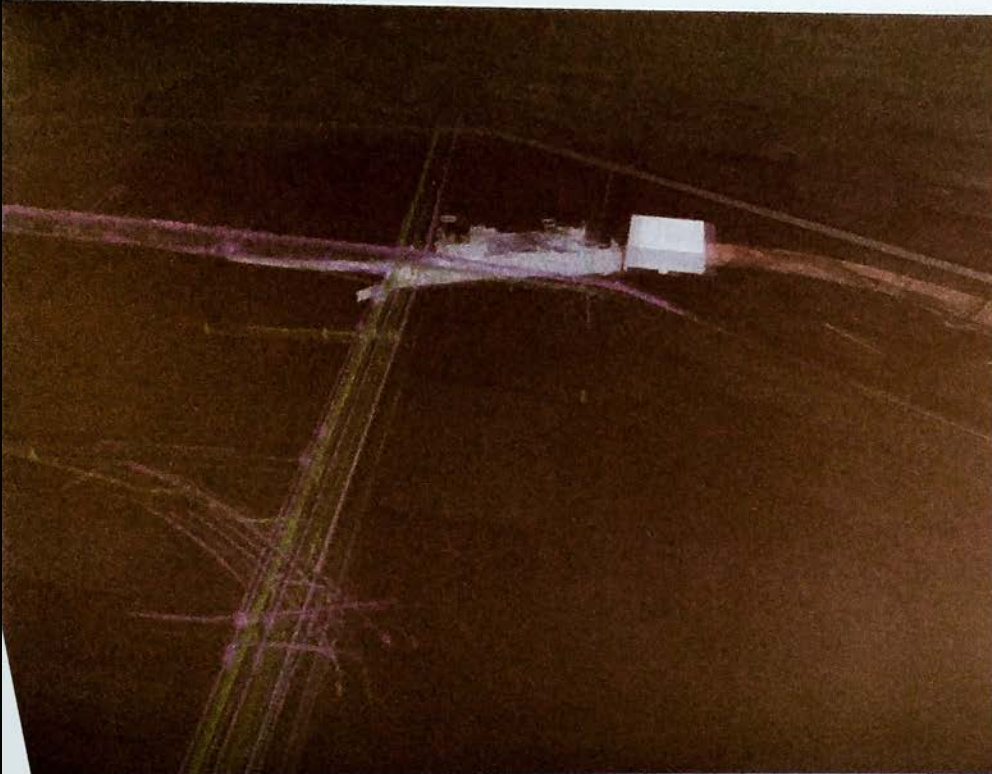
AUTODESK



## Rail Design & Construction

Los Angeles

- ReCap, Revit, Civil3D, Navisworks, InfraWorks360, BIM360
- Tunnels, Stations, Utilities, Buildings... Entire City





## Rail Design & Construction

- ReCap, Revit, Civil3D, Navisworks, InfraWorks360, BIM360
- Tunnels, Stations, Utilities, Buildings... Entire City

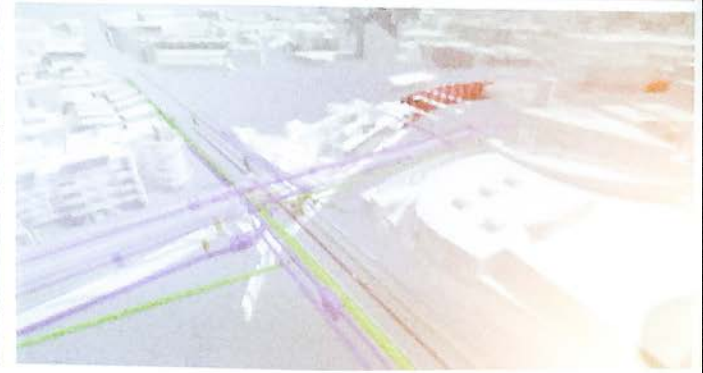
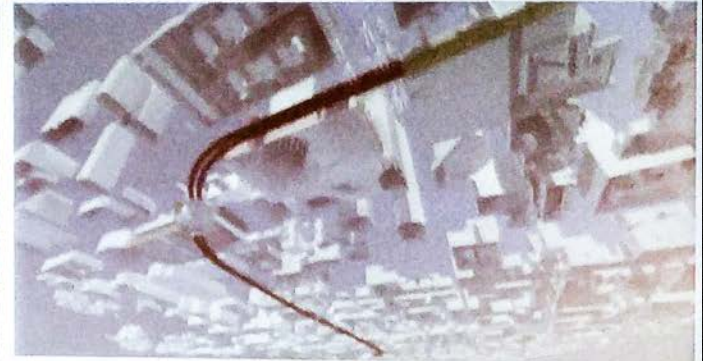




## Rail Design & Construction

Los Angeles

- ReCap, Revit, Civil3D, Navisworks, InfraWorks360, BIM360
- Tunnels, Stations, Utilities, Buildings... Entire City

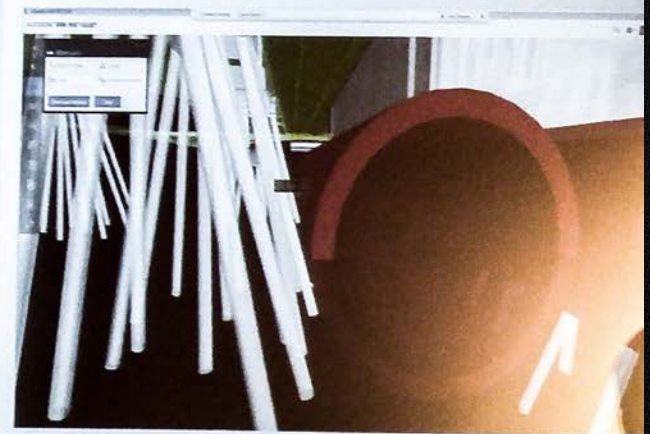
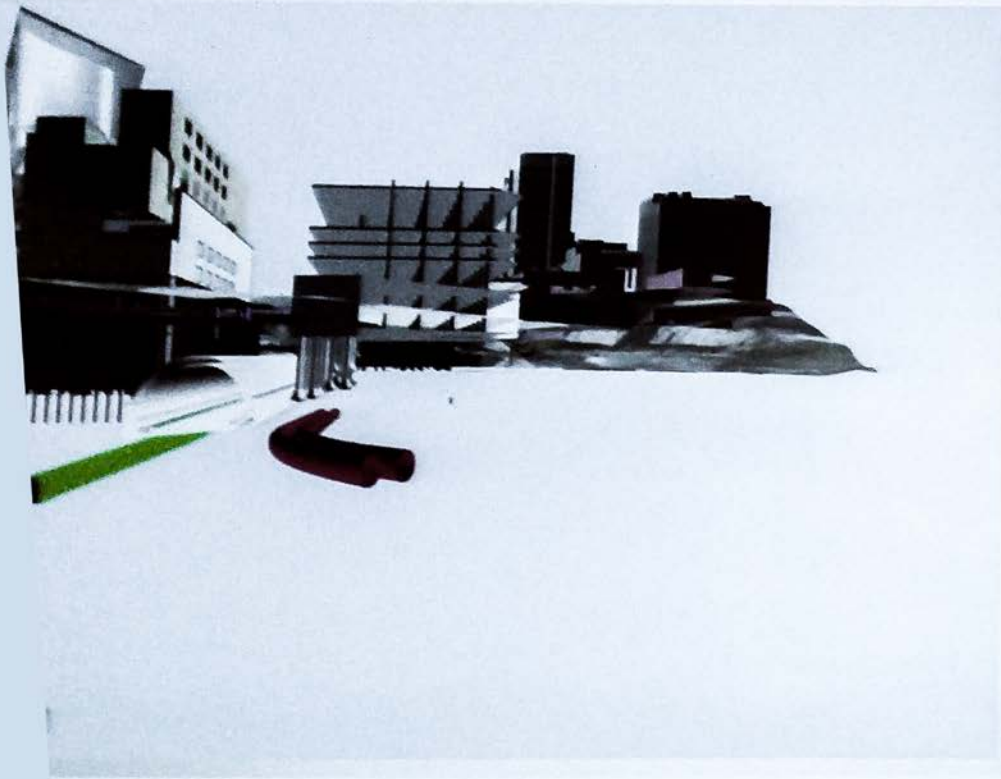




# ail Design & Construction

Los Angeles

New ways to Capture, Compute, Comprehend and Collaborate  
New opportunities for Handover Model for Operations and Maintenance

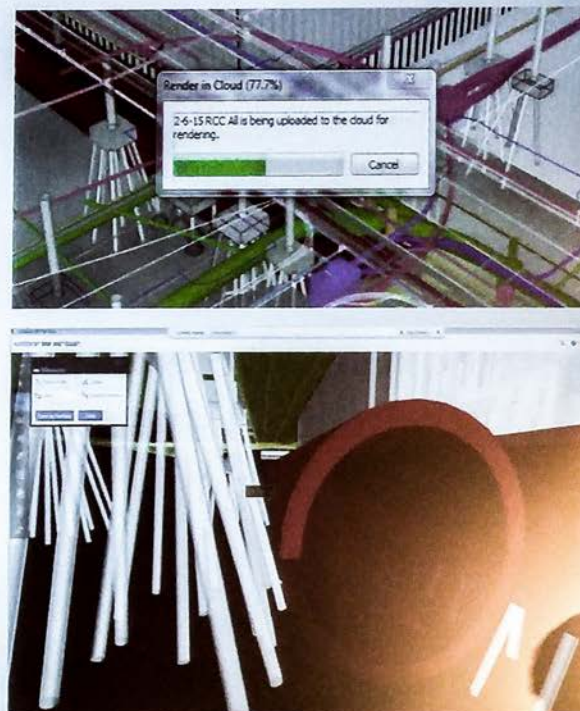




# Rail Design & Construction

Los Angeles

- New ways to Capture, Compute, Comprehend and Collaborate
- New opportunities for Handover Model for Operations and Maintenance

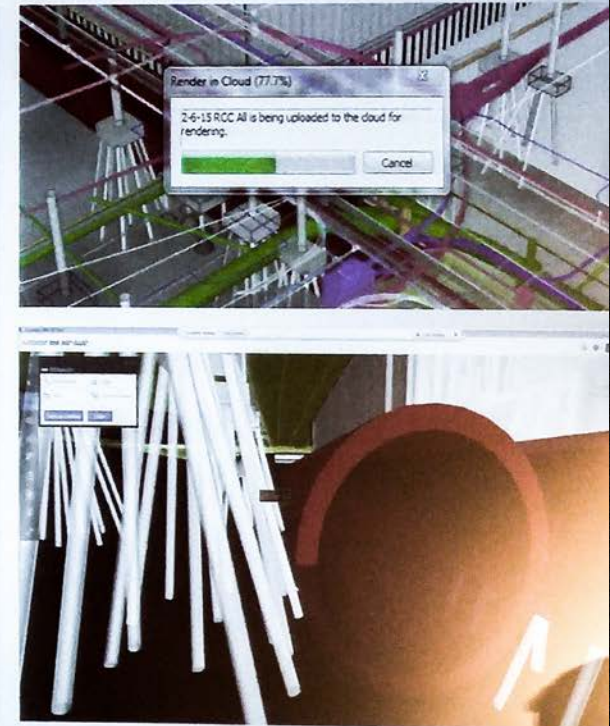




# Rail Design & Construction

Los Angeles

- New ways to Capture, Compute, Comprehend and Collaborate
- New opportunities for Handover Model for Operations and Maintenance

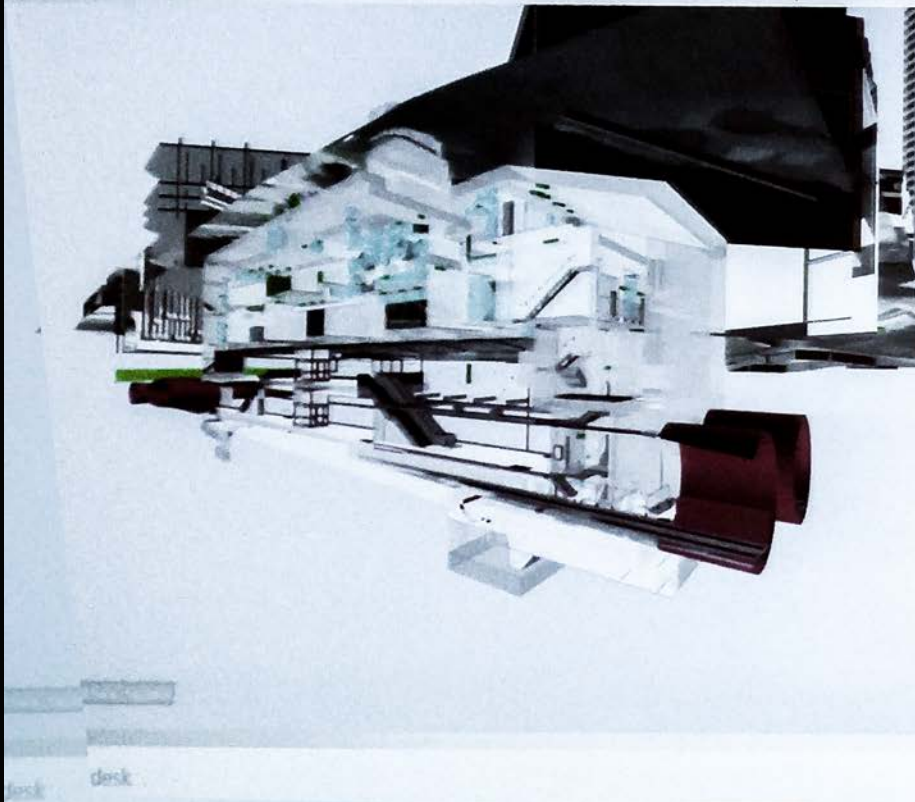




# Rail Design & Construction

Los Angeles

- New ways to Capture, Compute, Comprehend and Collaborate
- New opportunities for Handover Model for Operations and Maintenance

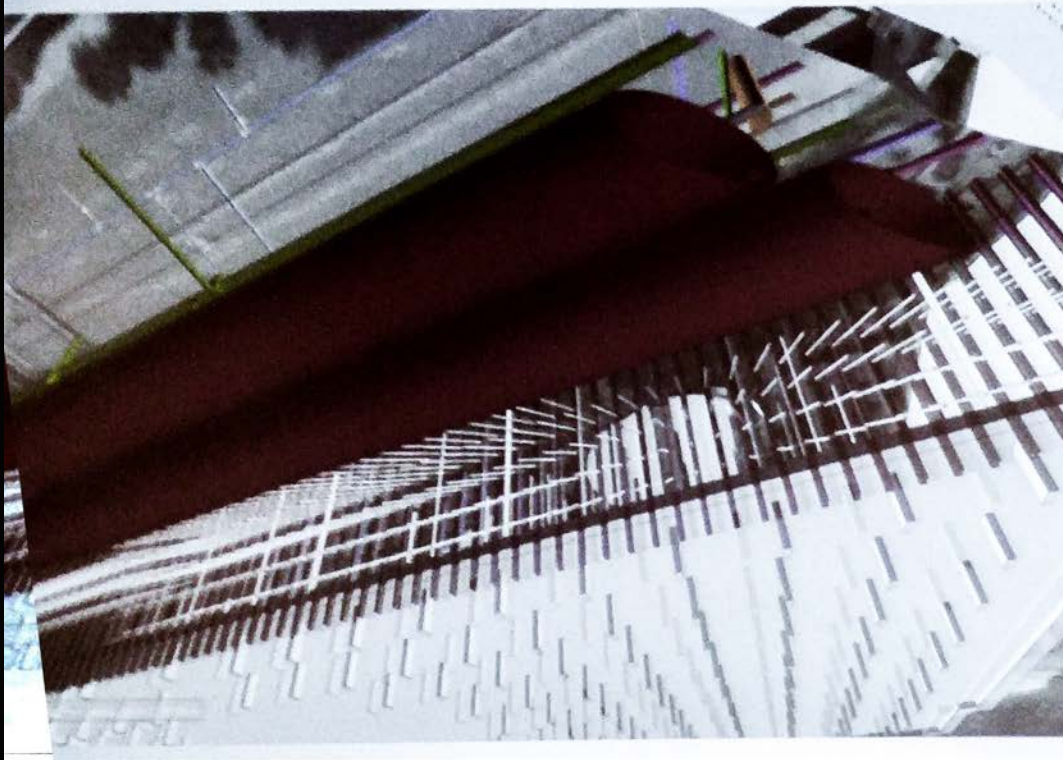




# Rail Design & Construction

Los Angeles

- New ways to Capture, Compute, Comprehend and Collaborate
- New opportunities for Handover Model for Operations and Maintenance

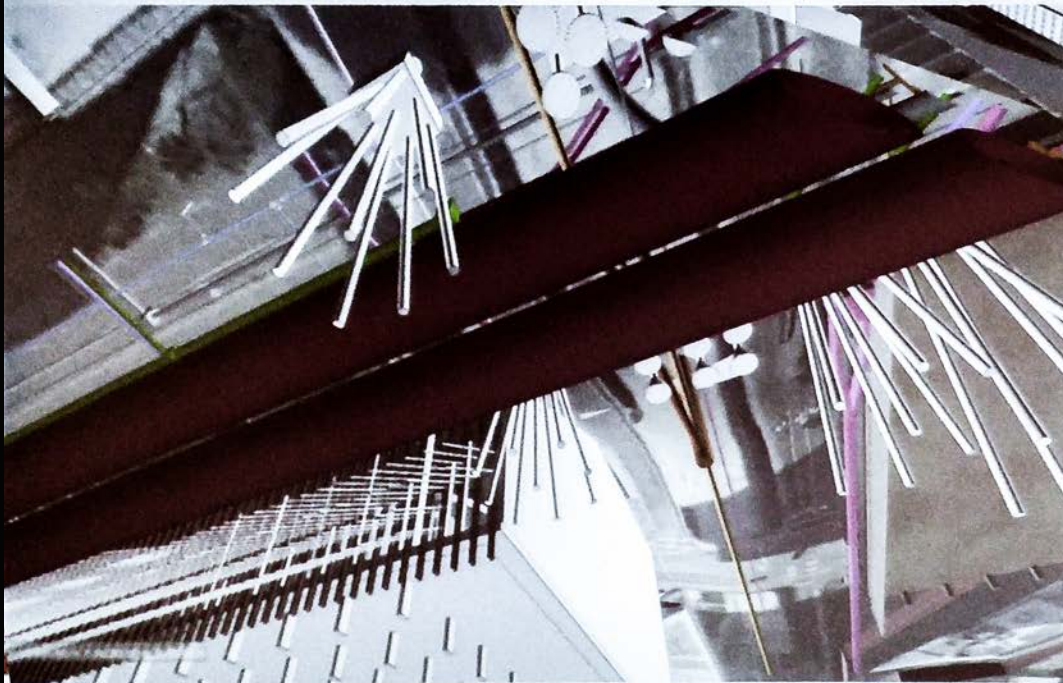




# Rail Design & Construction

Los Angeles

- New ways to Capture, Compute, Comprehend and Collaborate
- New opportunities for Handover Model for Operations and Maintenance





# Rail Design & Construction

Los Angeles

- New ways to Capture, Compute, Comprehend and Collaborate
- New opportunities for Handover Model for Operations and Maintenance

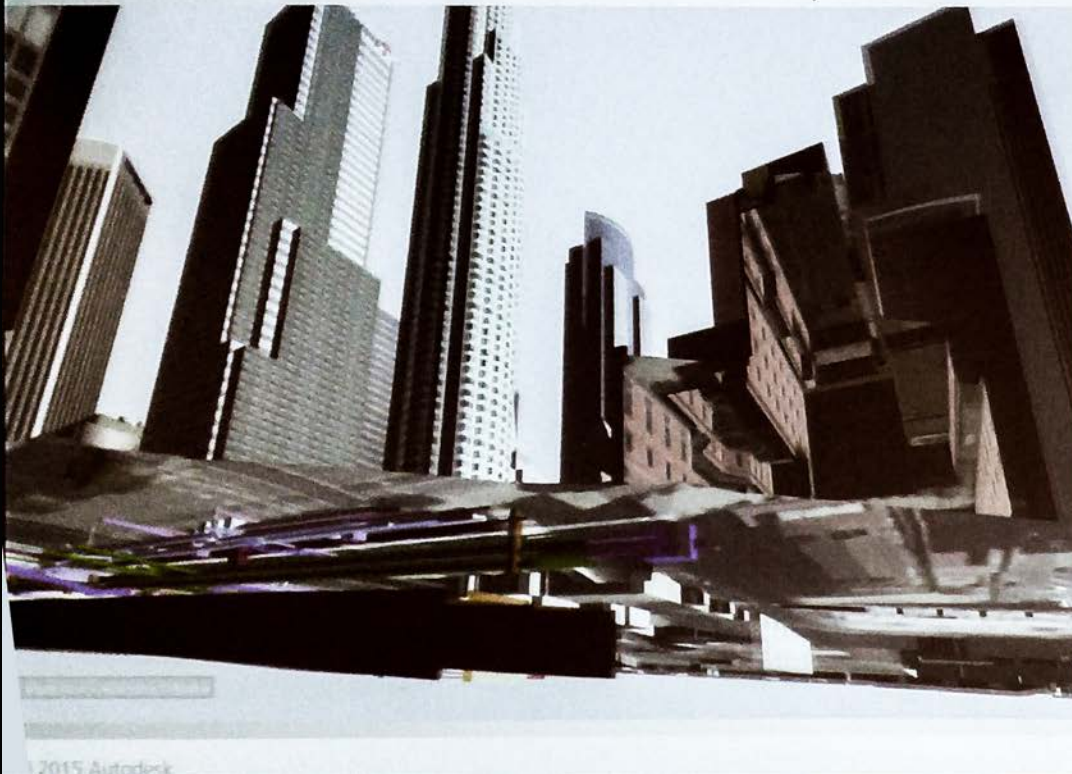




# Rail Design & Construction

Los Angeles

- New ways to Capture, Compute, Comprehend and Collaborate
- New opportunities for Handover Model for Operations and Maintenance





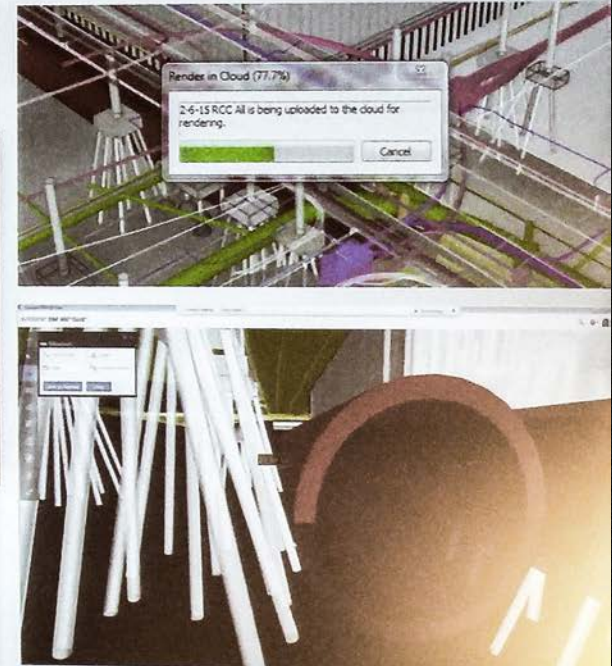
# Rail Design & Construction

Los Angeles

- New ways to Capture, Compute, Comprehend and Collaborate
- New opportunities for Handover Model for Operations and Maintenance



© 2015 Autodesk



AUTODESK



# Rail Design & Construction

- New ways to Capture, Compute, Comprehend and Collaborate
- New opportunities for Handover Model for Operations and Maintenance





# Rail Design & Construction

- New ways to Capture, Compute, Comprehend and Collaborate
- New opportunities for Handover Model for Operations and Maintenance

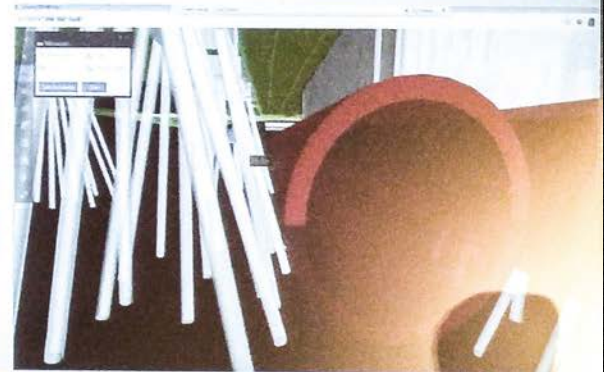
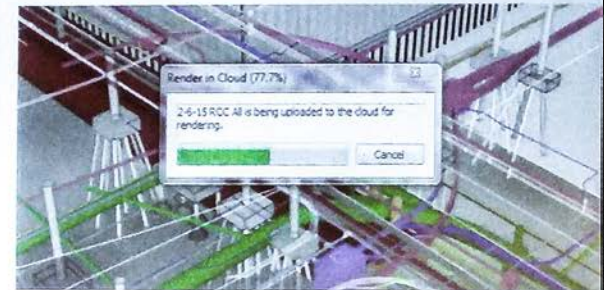




# Rail Design & Construction

Los Angeles

- New ways to Capture, Compute, Comprehend and Collaborate
- New opportunities for Handover Model for Operations and Maintenance

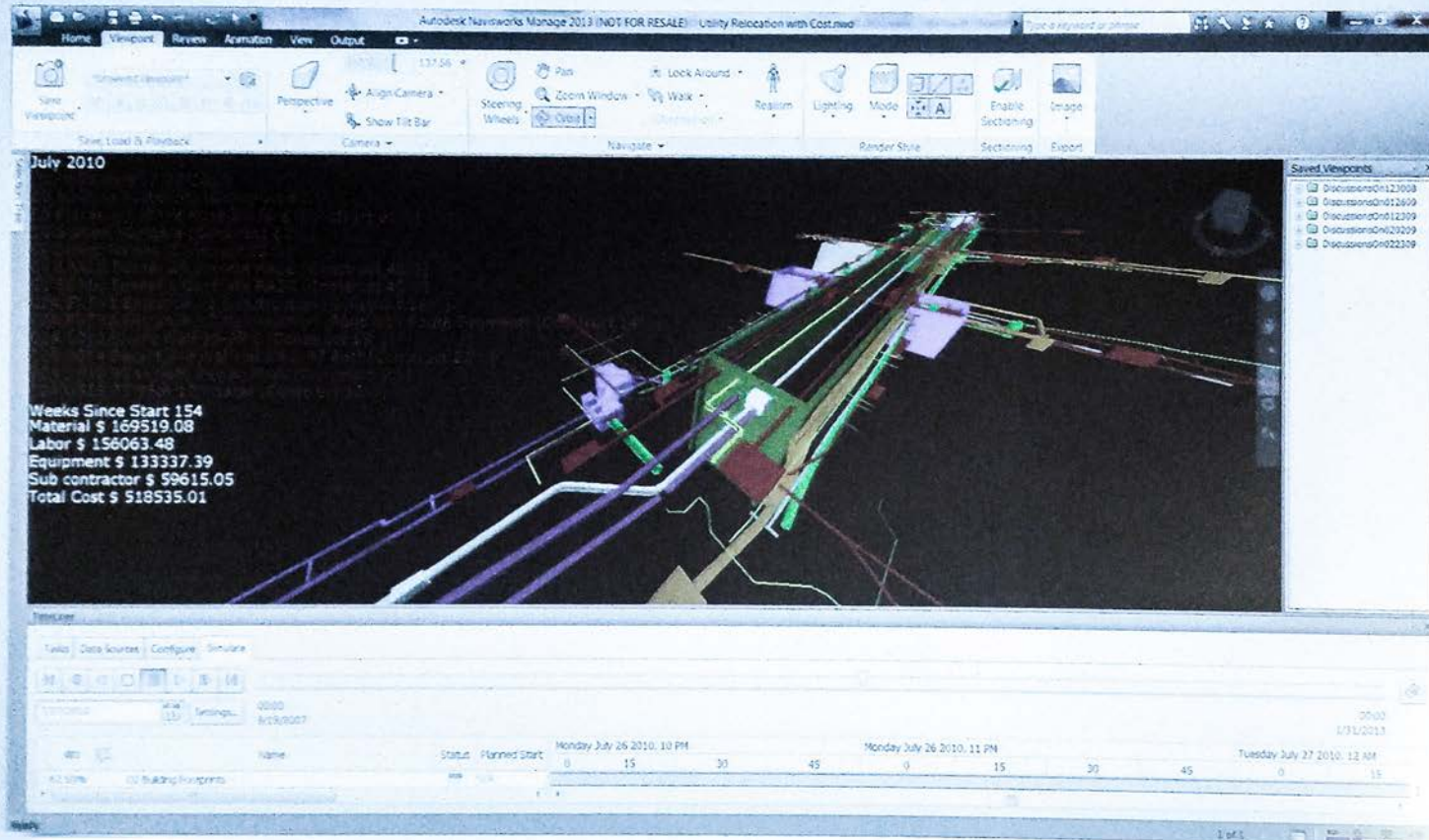




# Rail Program Management

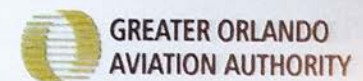
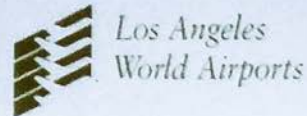
NY MTA East Side  
2nd Ave Subway

- 5D Tunnel Models - TBM Launch Box with Utility Relocation



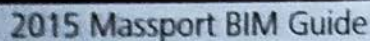


# Global Airports Adopting BIM ( Partial List )



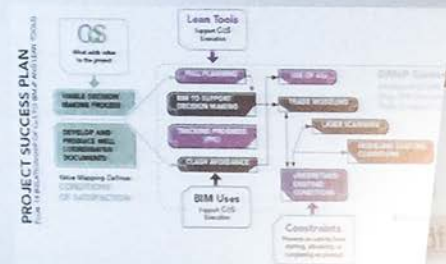


- Beyond BIM for clash and drawings, BIM is part of the strategic plan



<https://www.massport.com/media/341236/bim-guide-071715-disc.pdf>

**500** The Model Element is a field verified representation in terms of size, shape, location, quantity, and orientation. Non-graphic information may also be attached to the Model Element.





# BIM QA/QC, Classification & Interoperability

- Free Tools →
- Value-add Services
  - Custom Model Checking
  - Automated Processing
  - BIM data Integration
    - ERP, Databases
    - Project Controls
    - AM / FM / O&M

<http://www.biminteroperabilitytools.com/>

## BIM Interoperability Tools

Free add-ins for Autodesk Revit® to help architects, engineers, contractors and owners with their Building Information Modelling (BIM) workflows.



Autodesk  
**Model  
Checker**  
for Revit

? [Click here](#)  
to learn more



Autodesk  
**Model  
Checker  
Configurator**  
for Revit

? [Click here](#)  
to learn more



Autodesk  
**COBie  
Extension**  
for Revit

? [Click here](#)  
to learn more



Autodesk  
**Classification  
Manager**  
for Revit

? [Click here](#)  
to learn more

Whether you use Autodesk Revit or your consultants do, these add-ins developed by Autodesk will enhance your software and make it easier for you to meet your BIM requirements. If you want to check your model for compliance, classify your modeled elements, export data for operations and maintenance, or use it for sustainable design, these tools will help. Click on the links to learn more, download the installation files, or access helpdesk support.

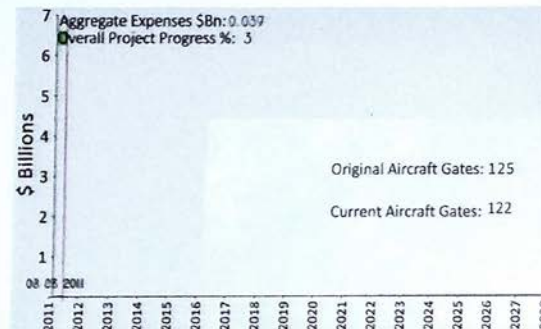


# Program Management - Airports



## 3D Model +

- Schedule
- Cost
- Materials
- Resources
- Outages
- Gates
- Other Data ?





## BIM for Airports

### \$ 4.5B 15 Year Master Plan

- New Hotel & Terminal Upgrades
- Rail Station
- BIM for all Project over \$1M

### Autodesk BIM Solutions

- Revit
- Civil3D
- Inventor
- Navisworks
- Dynamo
- BIM 360 Glue, Field, Point Layout
- InfraWorks 360
- Revit to Maximo





# BIM for Airports

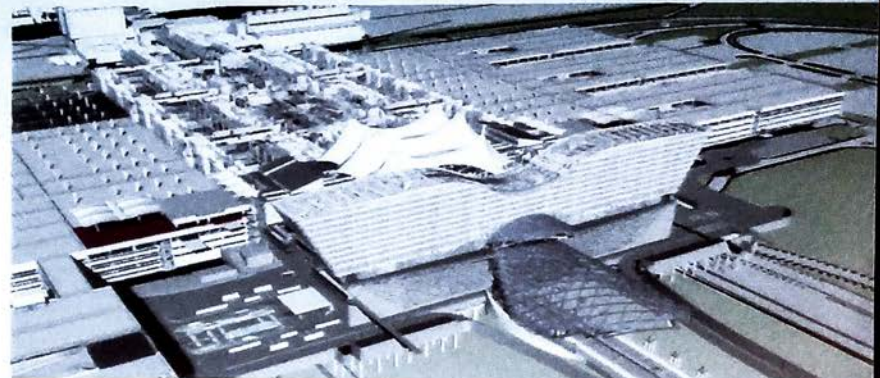
## \$ 4.5B 15 Year Master Plan

- New Hotel & Terminal Upgrades
- Rail Station
- BIM for all Project over \$1M

## Autodesk BIM Solutions

- Revit
- Civil3D
- Inventor
- Navisworks
- Dynamo
- BIM 360 Glue, Field, Point Layout
- InfraWorks 360
- Revit to Maximo

Denver International Airport





# BIM for Airports

## BIM Mandates, Templates and Execution Plan for All Projects



**Design Standards  
Manual 12:  
Chapter 1 – Electronic  
Data Collection &  
Interchange  
Procedures Manual**

Airport Infrastructure  
Management



**Design Standards  
Manual 12:  
Chapter 5 – Civil CADD  
Manual**

Airport Infrastructure  
Management



**Design Standards  
Manual 12:  
Chapter 6 – BIM Revit  
Manual**

Airport Infrastructure  
Management



**Design Standards  
Manual 12:  
Chapter 4 – BPXP  
Supplemental  
Instructions**

Airport Infrastructure  
Management

### SECTION 603 PROJECT FILE STANDARDS

#### 603.1 Revit Template File Embedded Standards

A Revit file can contain all the elements needed for a construction document set in one file. In the Revit Project File (.RVT) are many aspects of the Building Information Model that in other modalities are standardized in many files or other systems.

#### 703.2 DIA Templates

DIA maintains Revit Project Template files for architecture, site files and MEP files. These are available in the standard content "03 Project Library\02\_Templates\Revit 2015" folder.

- DIA architecture template 2015.rte
- DIA construction template 2015.rte
- DIA mep template 2015.rte
- DIA structure template 2015.rte

#### 505.1.5 CIVIL 3D 2013

The "DIA-CADD-STANDARD\CIVIL 3D 2013" folder contains Civil 3d specific content. Civil 3d is version specific therefore the version is in the folder name for clarity over time. When a new version is introduced a new folder will be created for its version specific content.

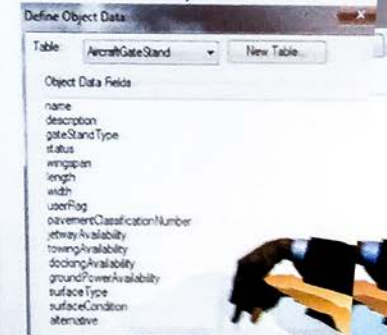
AutoCAD files that are specifically designed to be void of all Civil 3d content are found in the "DIA-CADD-STANDARD-TEMPLATE" branch of the Standards folder structure

#### 206.15 Commissioning Requirements

Commissioning data including but not limited to design intent, performance criteria and operations data shall be recorded and/or linked to the REVIT or Civil3D model as commissioning occurs throughout the project. It shall be the Project Team's responsibility to coordinate the information sources and integrate this information into the REVIT or Civil3D model for transfer at the completion of the project.



#### 512.3.3.2 FAA Object Data Tables





Level 4 Sub-Elements		Design Development / GMP		Construction Documents		Construction / Fabrication Model		As-Built / Record Drawings	
		LOD	MEA	LOD	MEA	LOD	MEA	LOD/CMGC	LOD/AOR
B1015	Exterior Stairs and Fire Escapes	250	D - A	300	D - A	400	C - GC		R300
B1016	Floor Raceway Systems	200	D - A	300	D - A	400	C - GC		R300
B1019	Other Floor Construction	200	D - A	300	D - A	400	C - GC		R300
B1021	Flat Roof Construction	200	D - S	300	D - S	400	C - GC	500	R300
B1022	Pitched Roof Construction	200	D - S	300	D - S	400	C - GC	500	R300
B1023	Canopies (Plaza and PTC, not Train Platform)	200	D - A/S	300	D - A/S	400	C - GC	500	R300
B1029	Other Roof Systems	200	D - A/S	300	D - A/S	0		0	R300
B2011	Exterior Wall Construction	250	D - A	300	D - A	400	C - GC	500	R300
B2012	Parapets	200	D - A	300	D - A	400	C - GC	500	R300
B2013	Exterior Louvers, Screens, and Fencing	200	D - A	300	D - A	400	C - GC	500	R300
B2014	Exterior Sun Control Devices	200	D - A	300	D - A	0		0	R300
B2015	Balcony Walls & Handrails	200	D - A	300	D - A	400	C - GC	500	R300
B2016	Exterior Soffits	200	D - A	300	D - A	400	C - GC	500	R300
B2021	Windows	250	D - A	300	D - A	400	C - GC	500	R300
B2022	Curtain Walls	250	D - A	300	D - A	400	C - GC	500	R300
B2023	Storefronts	250	D - A	300	D - A	400	C - GC	500	R300
B2031	Glazed Doors & Entrances	200	D - A	300	D - A	400	C - GC	500	R300
B2032	Solid Exterior Doors	200	D - A	300	D - A	0		0	R300
B2033	Revolving Doors	200	D - A	300	D - A	400	C - GC	500	R300
B2034	Overhead Doors	200	D - A	300	D - A	0		0	R300
B2039	Other Doors & Frames	200	D - A	300	D - A	0		0	R300
B3011	Roof Finishes	200	D - A	300	D - A	0		0	R300
B3012	Roof Sloppings & Paving Membranes	200	D - A	300	D - A	0		0	R300
B3013	Roof Insulation & Fill	200	D - A	300	D - A	0		0	R300
B3014	Flashings & Trim	200	D - A	300	D - A	0		0	R300
B3015	Roof Eaves and Soffits	200	D - A	300	D - A	0		0	R300
B3016	Gutters and Downspouts	200	D - A	300	D - A	0		0	R300



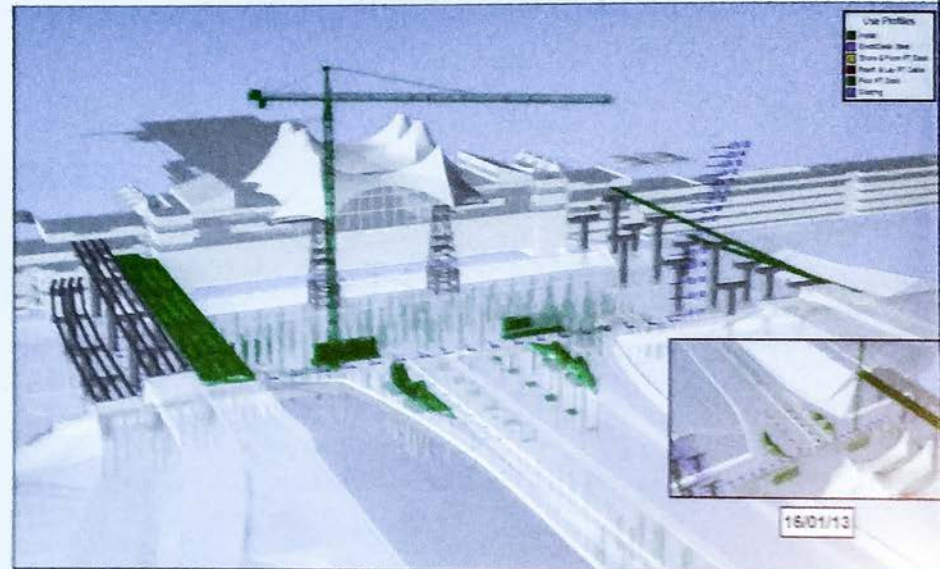


# BIM for Airports

## Measure BIM KPI's

### "Key Performance Indicators"

- Requests For Information
- Change orders
- Rework
- Estimating accuracy
- Schedule
- Material waste
- Sustainability (LEED)
- Safety
- **As-builts** for Facilities Management and Operations and Maintenance



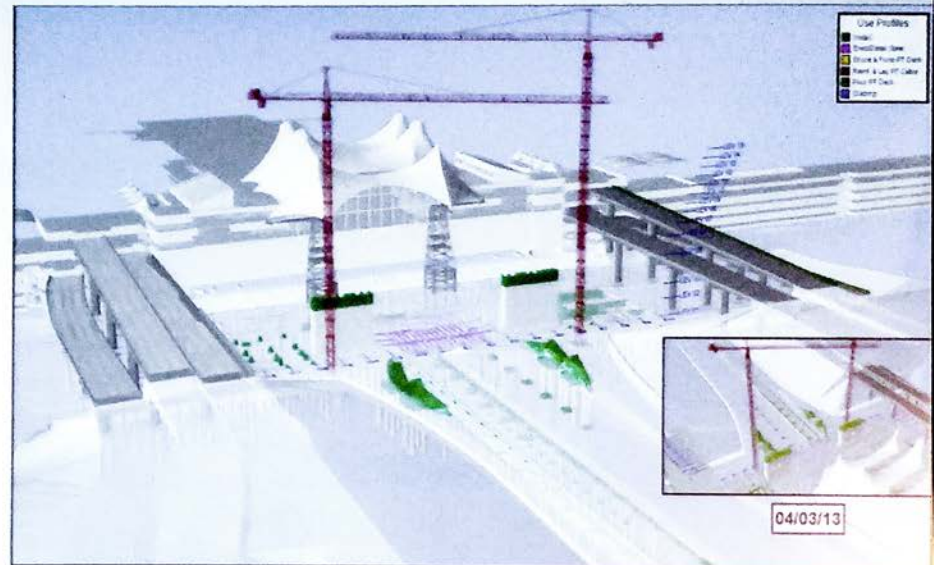


# BIM for Airports

## Measure BIM KPI's

### "Key Performance Indicators"

- Requests For Information
- Change orders
- Rework
- Estimating accuracy
- Schedule
- Material waste
- Sustainability (LEED)
- Safety
- As-builts for Facilities Management and Operations and Maintenance

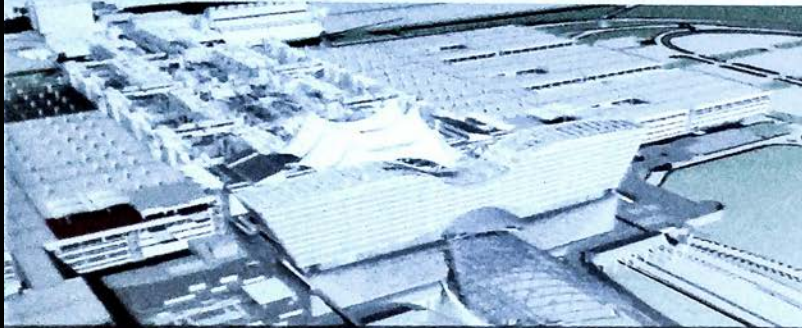




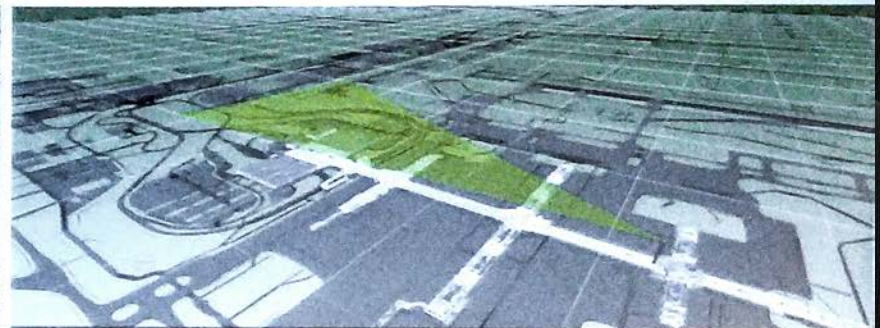
# Denver International Airport



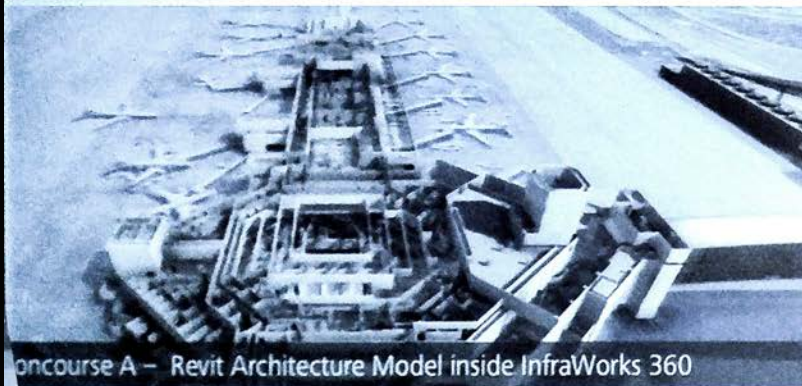
Different Applications - Different Uses - Different Models - Different Users



Existing Revit Terminal, Hotel and Rail Models



FAA 3D Interactive TERP Model in NavisWorks



Concourse A - Revit Architecture Model inside InfraWorks 360



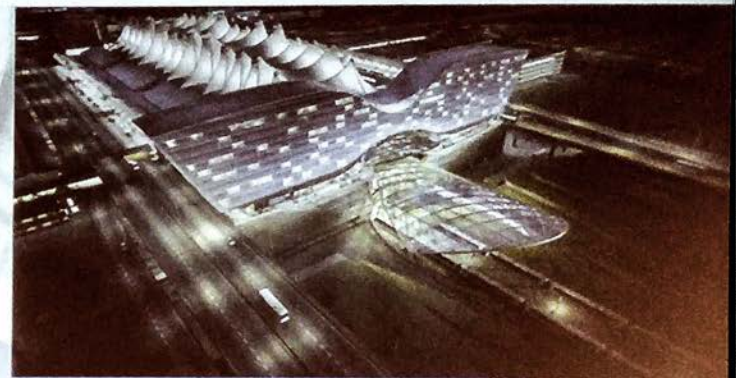
InfraWorks 360 Existing Context Model (CAD + BIM + GIS)



# Denver International Airport



Visualization is a direct output from BIM (Desktop and Cloud Rendering)

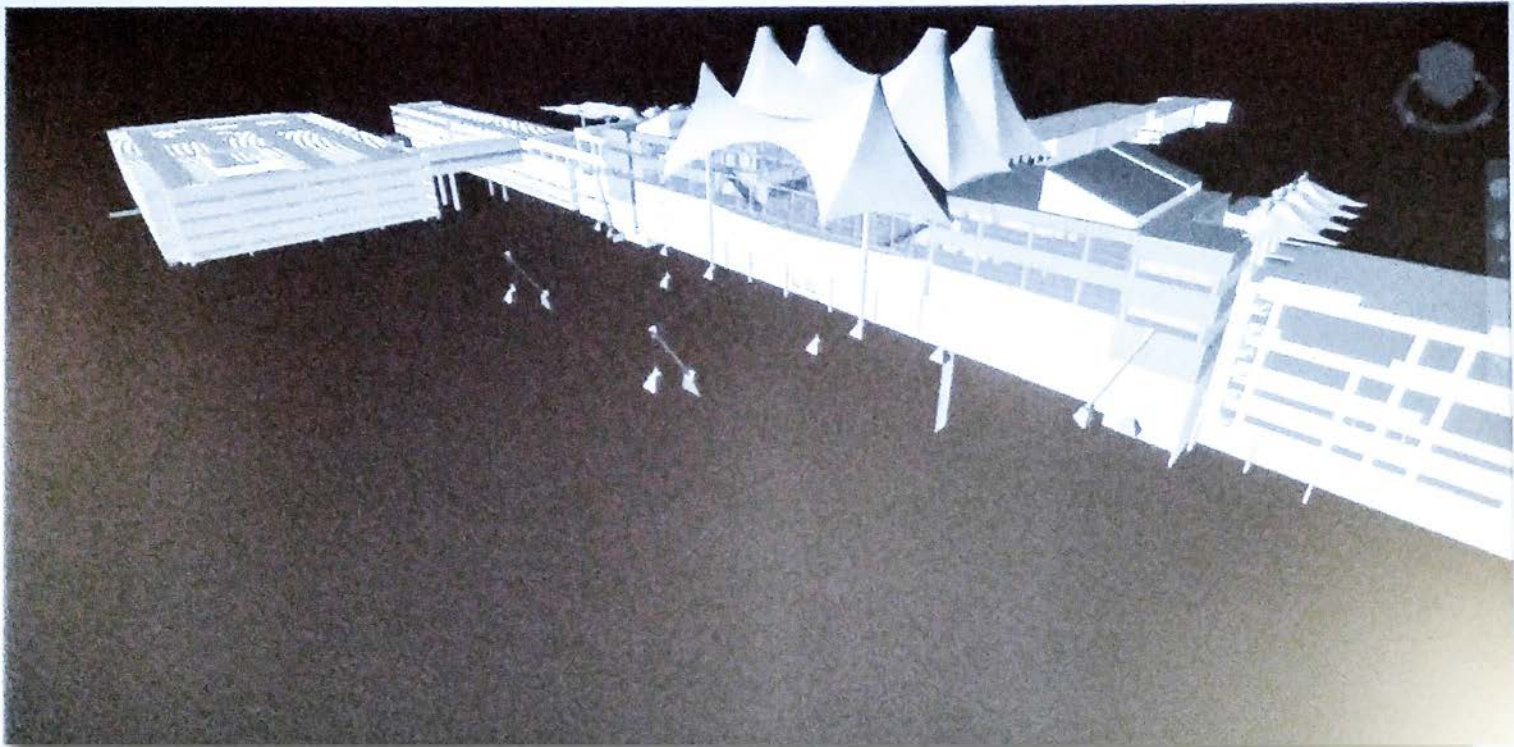




# BIM for Airports



Integrate Reality Capture into BIM Workflows and Decisions

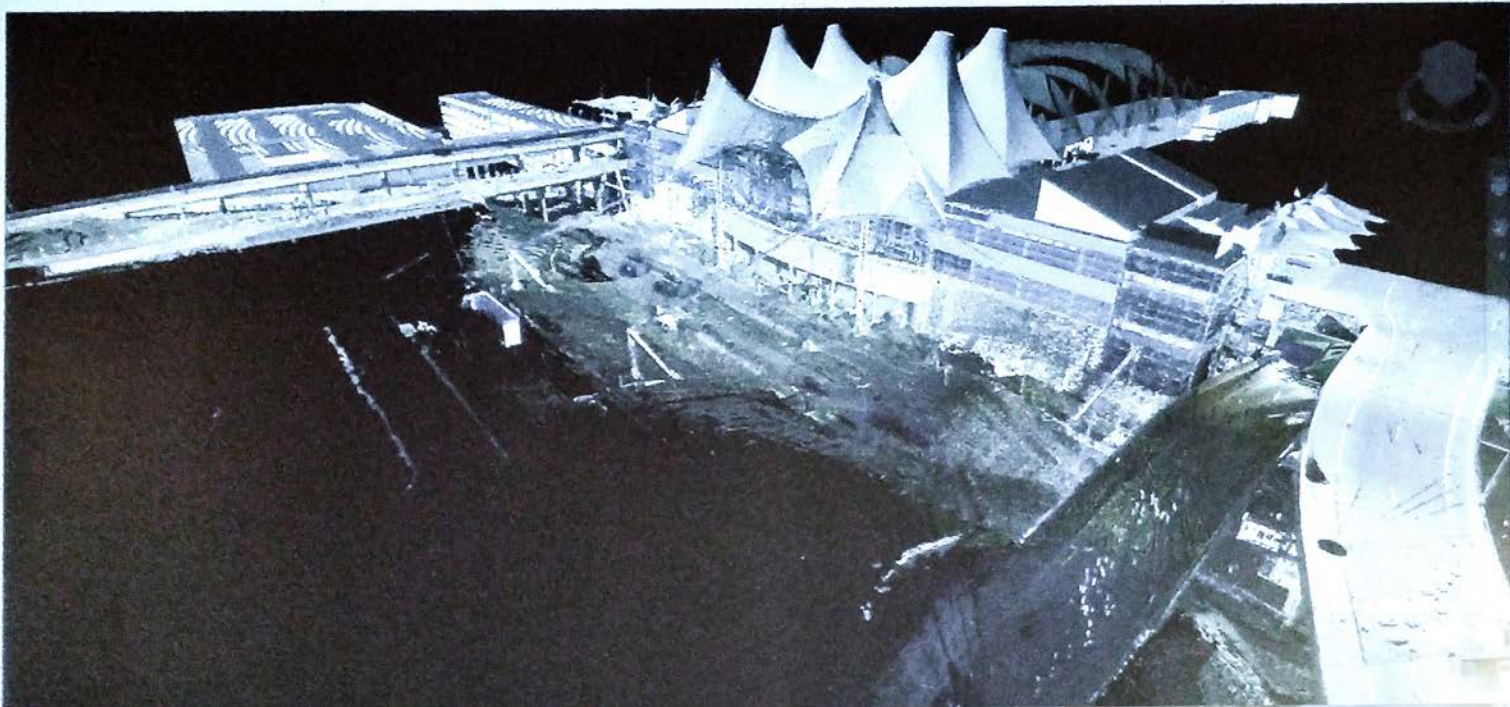




# BIM for Airports



Integrate Reality Capture into BIM Workflows and Decisions

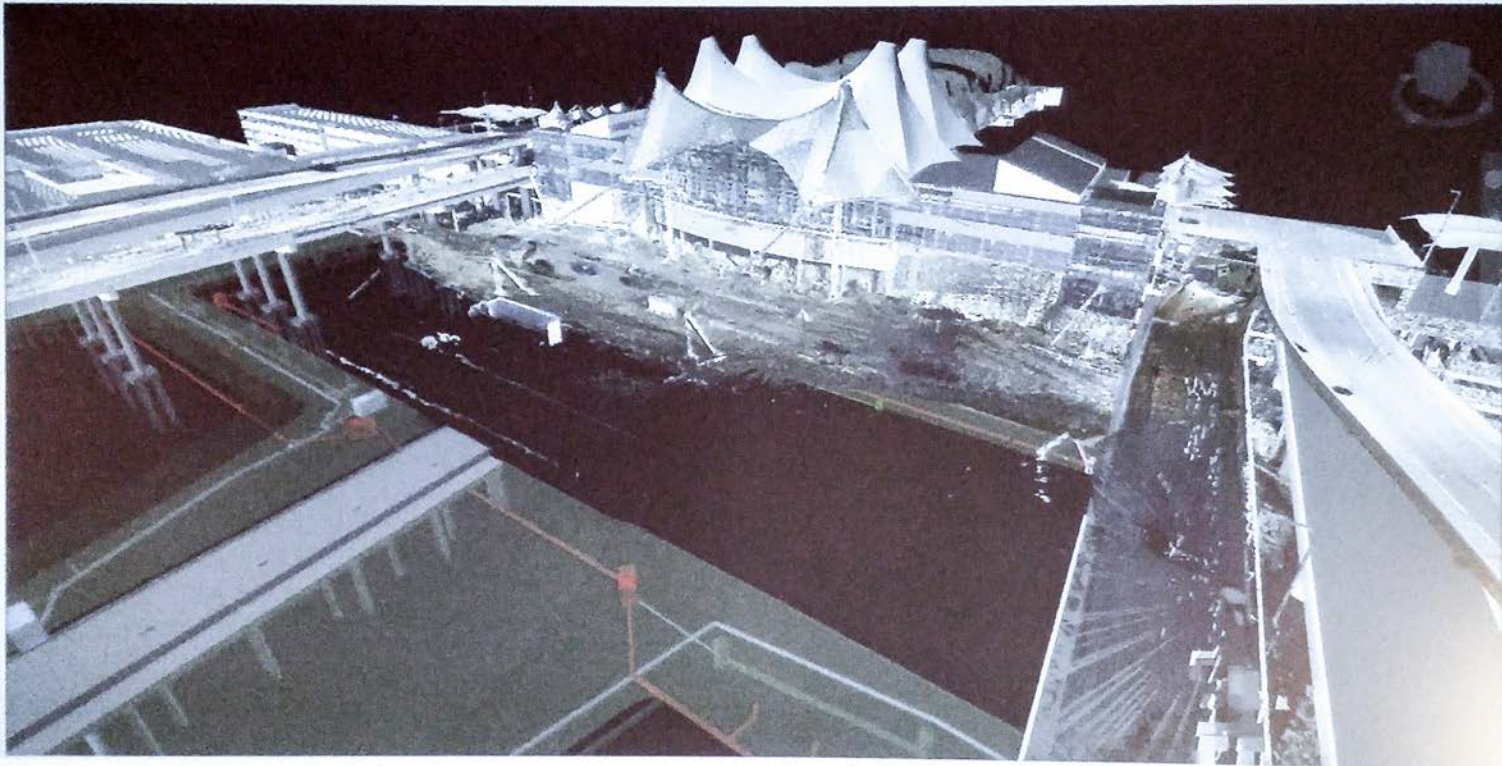




# BIM for Airports



Integrate Reality Capture into BIM Workflows and Decisions

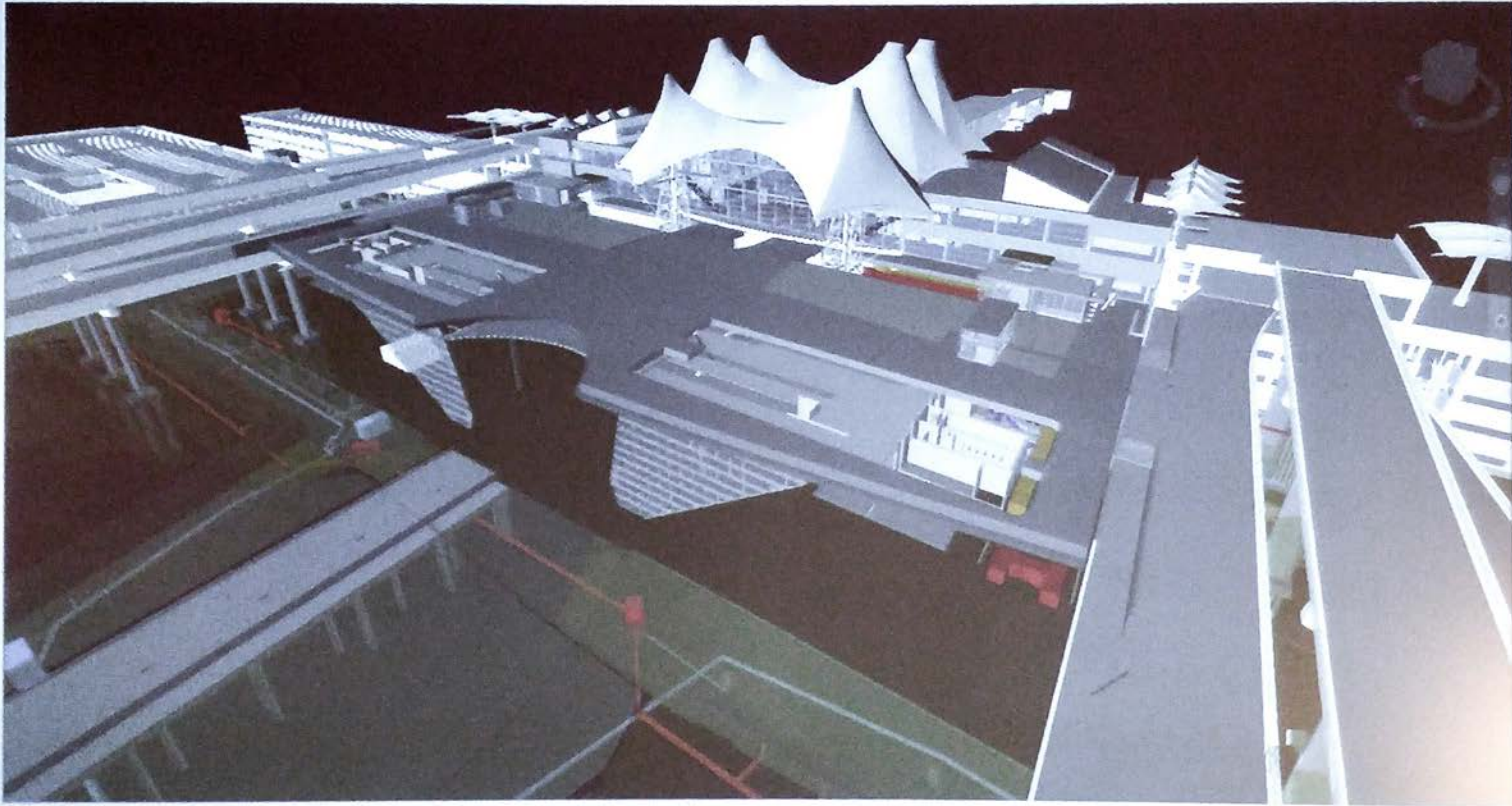




# BIM for Airports



Integrate Reality Capture into BIM Workflows and Decisions

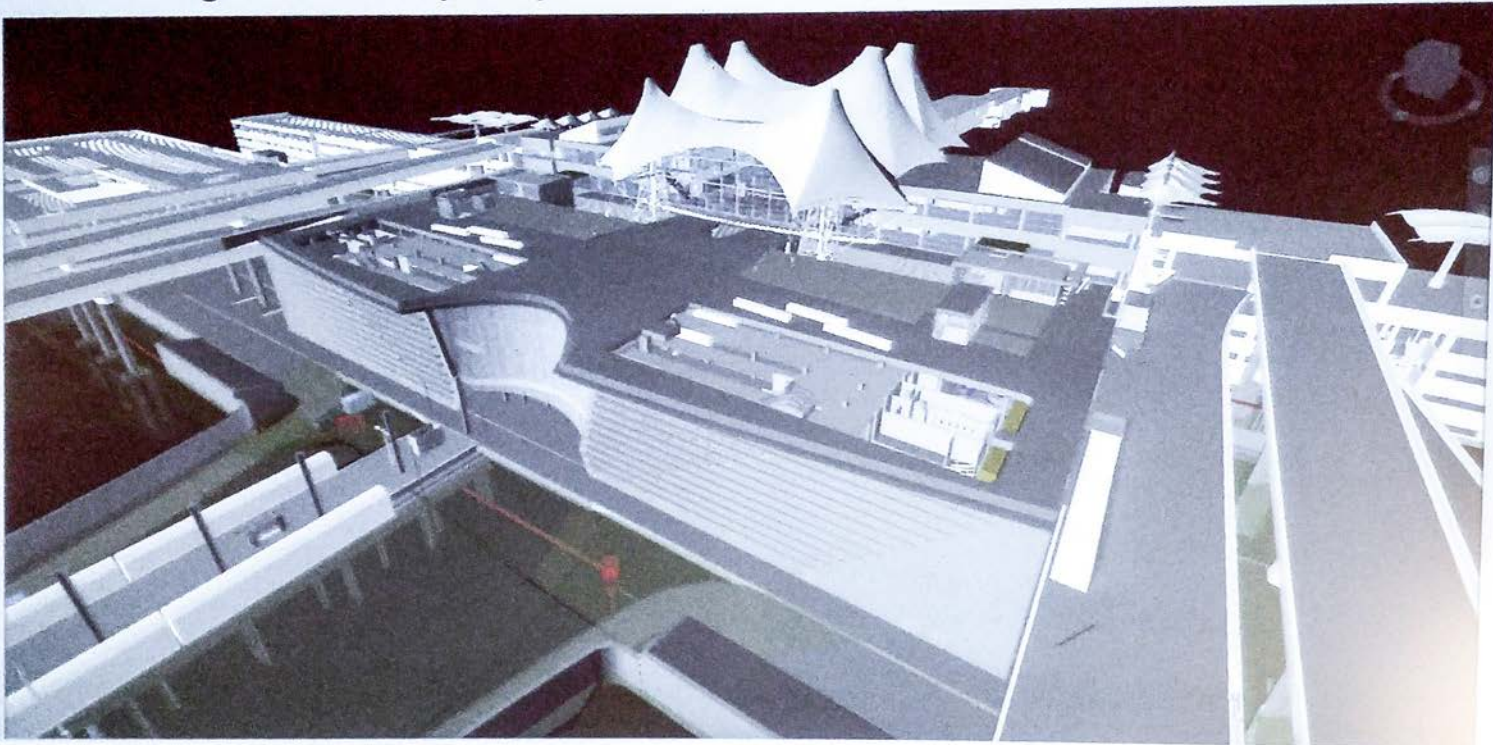




## BIM for Airports



Integrate Reality Capture into BIM Workflows and Decisions





# Denver International Airport



4 Fire Station Concept Designs and Final Decision in **1 hour**  
Versus **3 Weeks!**

**I** AUTODESK  
INFRAWORKS





# Denver International Airport



4 Fire Station Concept Designs and Final Decision in **1 hour**  
Versus **3 Weeks!**

**I** AUTODESK  
INFRAWORKS





# Denver International Airport



4 Fire Station Concept Designs and Final Decision in **1 hour**  
Versus **3 Weeks!**

**I** AUTODESK  
INFRAWORKS





## 4 Fire Station Concept Designs and Final Decision in **1 hour** Versus **3 Weeks!**

**I** AUTODESK  
INFRAWORKS





# Denver International Airport



4 Fire Station Concept Designs and Final Decision in **1 hour**  
Versus **3 Weeks!**

**I** AUTODESK  
INFRAWORKS



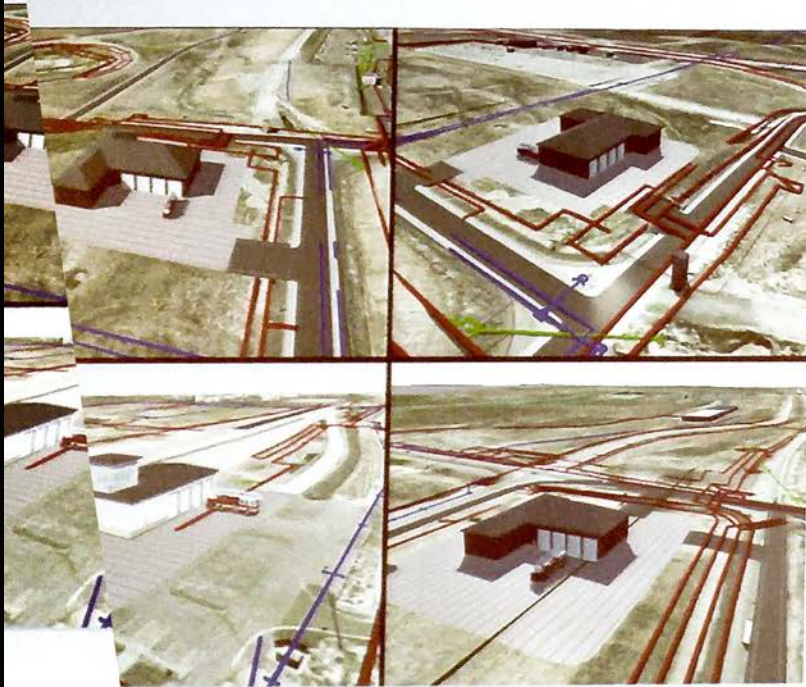


# Denver International Airport



4 Fire Station Concept Designs and Final Decision in **1 hour**  
Versus **3 Weeks!**

**I** AUTODESK  
INFRAWORKS

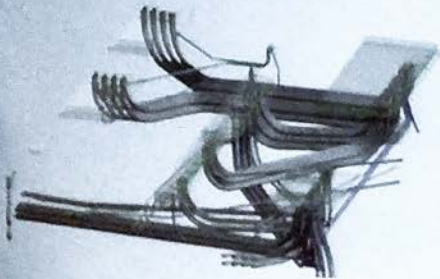




# BIM for Airports



BIM to Prefab to Field Install – No Surprises



Revit & Civil3D Model



Pre Fab Pipe Racks



BIM Driven Layout



Automated Machine Guidance



Perfect Install



# BIM for Airports

DEN

## Safety, Quality, Issues, Commissioning – BIM 360 Field

AUTODESK® BIM 360™ FIELD DIA South Terminal Redevelopment Program

Notifications 10/20/2016

### Project Overview

Denver, CO



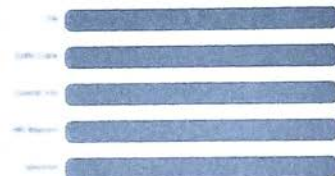
Issue summary

Draft 0 Open 79 Completed 0 Ready 0 Closed 451

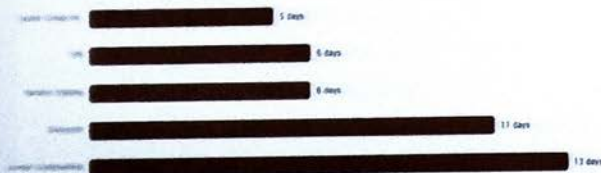
#### Issue Tracker - Total v. Closed



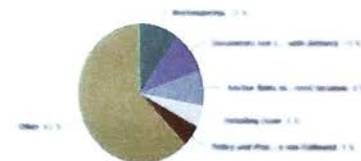
#### Companies with Most Unresolved Issues



#### Average Time to Close Issues



#### Root Cause





# BIM for Airports



## Capturing all Assets in BIM 360 – Sync with Maximo for O&M

A screenshot of a software interface, likely a BIM 360 or Maximo system, displaying asset details for item CAL000015. The interface includes a sidebar on the left with a "Project Overview" section. The main content area is titled "Tip Tuesday" and shows the item ID "CAL000015" with a state of "[01] Awaiting Team Review". Below this, there are tabs for "Item Details", "Workflow Actions", "Attachments (0)", and "Change Log (4)". The "Item Details" tab is active, showing an "Edit" button and a section for "Details (1 of 3)". This section displays the "Number" as "CAL000015" and a value of "Nan". Below this, there is a section for "QR Code (2 of 3)" which contains a QR code labeled "QR Code". The background of the interface is blurred, showing various charts and data visualizations.



# Cloud & Mobil Collaboration



## Paperless Jobsite



From the Office

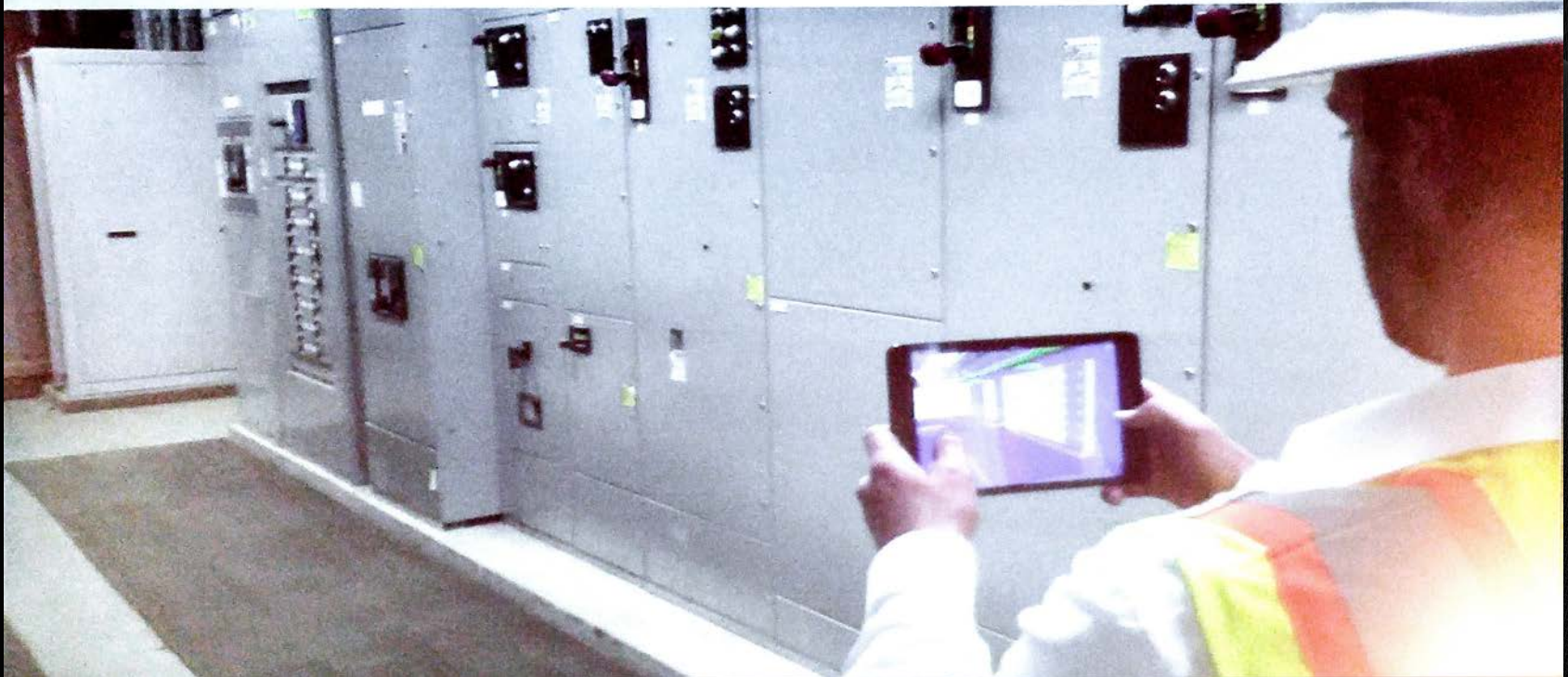


To the Field



## BIM at your Finger Tips

Augmented Reality, Data Accessibility, Online or Offline





## BIM at your Finger Tips

Augmented Reality, Data Accessibility, Online or Offline

DEN





## Metrics

- Owner saves **6,000** Hrs in labor creating Operation and Maintenance asset information using BIM Data
- Prefabrication driven by BIM shaves **3 months** off schedule
- BIM 360 Glue (Clash Detection in the Cloud) saves 8 hrs per worker per week in Design and Construction (**8,000 hrs saved**)
- BIM 360 Field saved 2 hrs per issue and **1,100 hrs** in the first 6 months
- BIM reduced RFI's, Change Orders, Re-Work by **40%**



# BIM = State of the Art

- Be the Highest achiever
  - Use the Best technology
    - Create a Better process
      - Deliver the Greatest outcomes



! Thank you !