



Hong Kong Institute of BIM

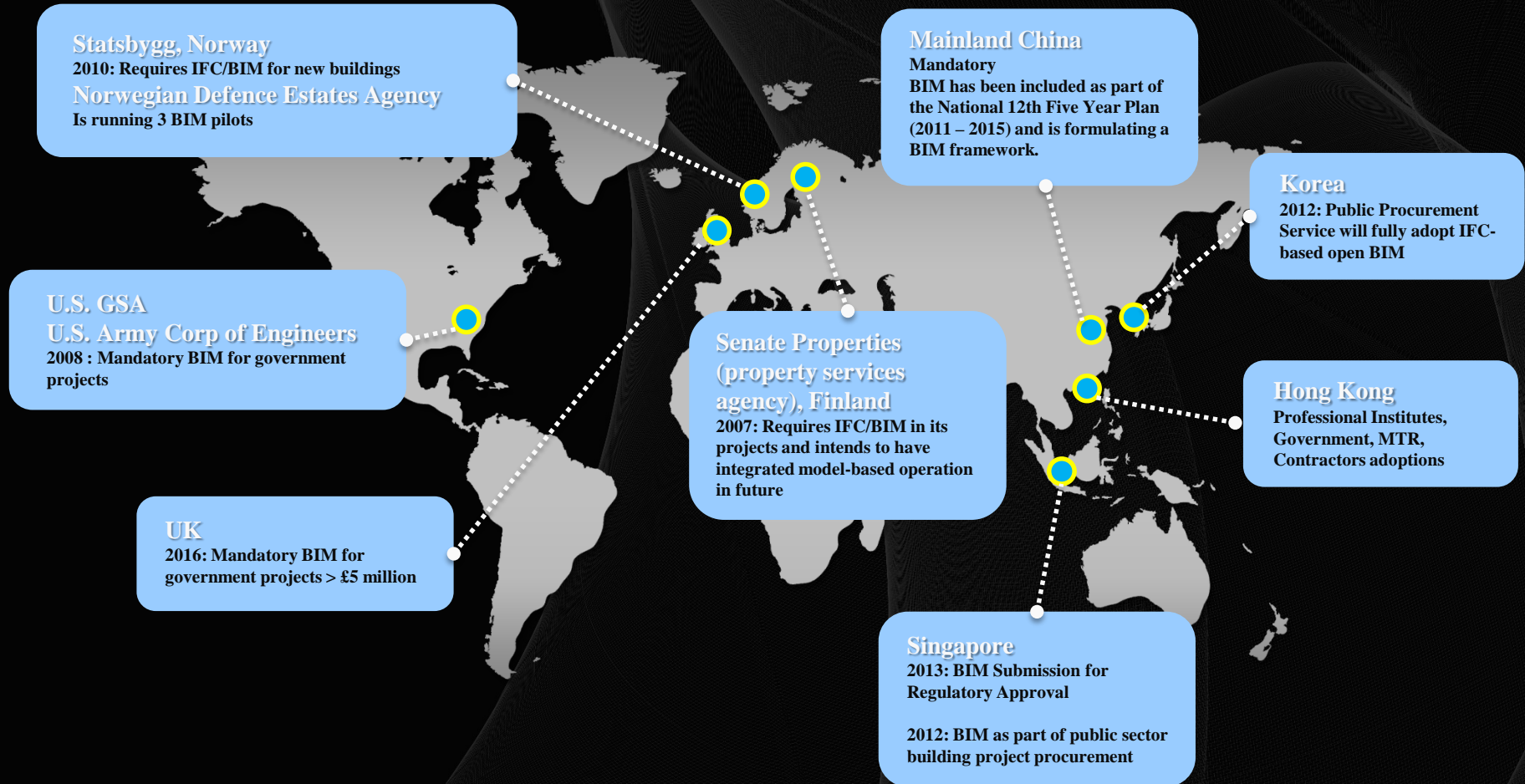
BIM Exporting in One Belt One Road?



David Fung

*Registered Architect, HKIA
Managing Director, A.C.I.D.
HKIBIM Chairman
HKUSPACE Department of Architecture, Adjunct Lecturer*









イエイリ建設ITラボ

甦れ!日本の建築

3次元で建設生産プロセスを改革しよう!

【開催日時】

2007年9月28日(金) 10:00~17:30

【会場】

東京コンファレンスセンター・品川/大ホール

【主催】

日経アーキテクチャ/ケンプラッツ/イエイリ建設ITラボ

【特別協賛】

Autodesk®



【協賛】

アークデータ研究所/キヤノンマーケティングジャパン/サイバネットシステム/
フォーラムエイト/ジオプラン/GSA/
環境シミュレーション/太塚商会/ソフトウェアセンター

【事例2 海外建築設計事務所の視点】

アエダスにおけるBIM - 意匠から構造、設備設計

香港アエダス社

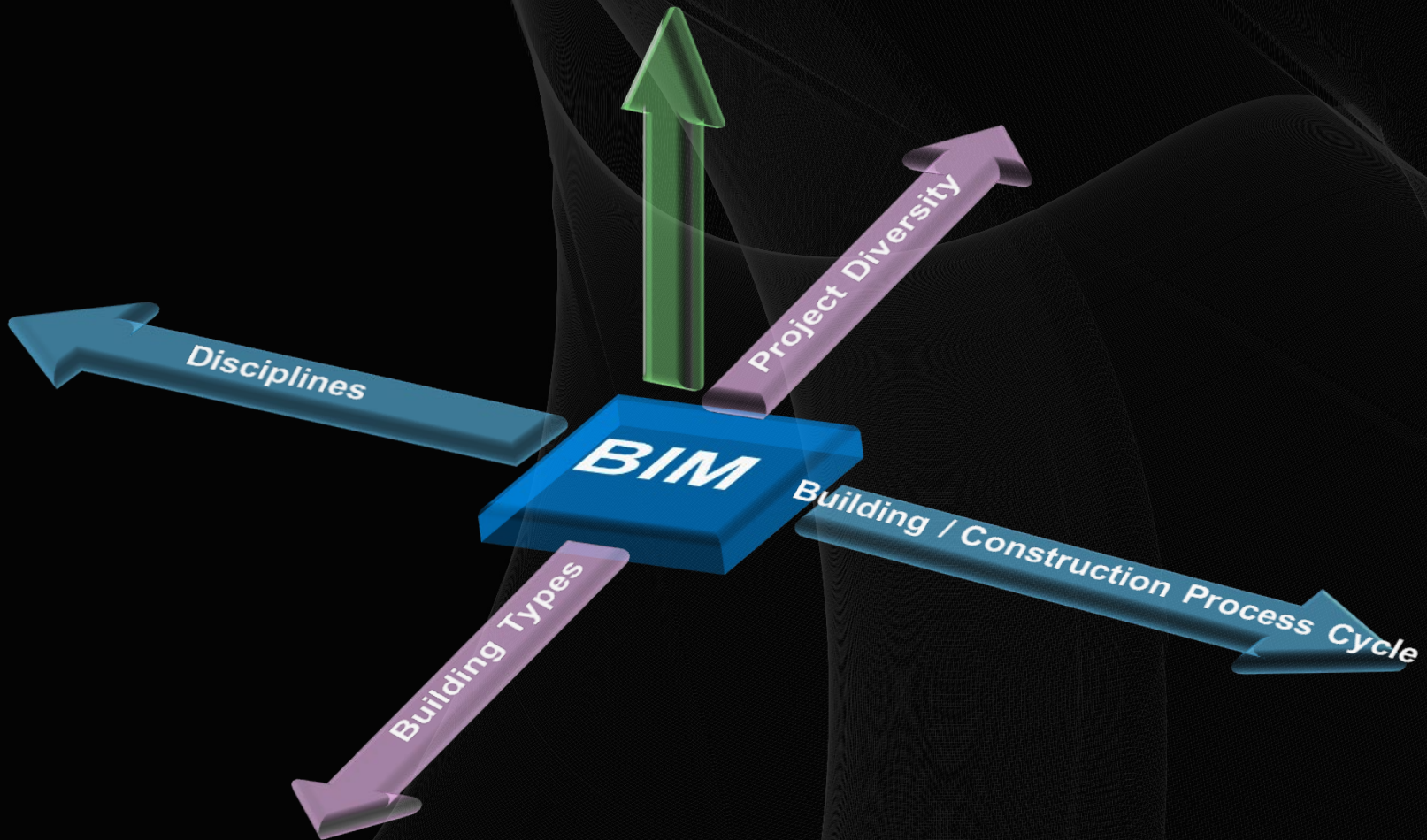
シニア・アソシエート

BIM部長

デービッド・ファン 氏

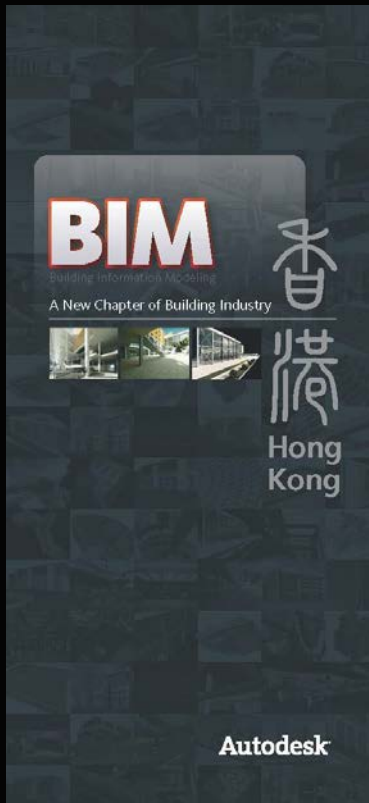


Professions/ Policies



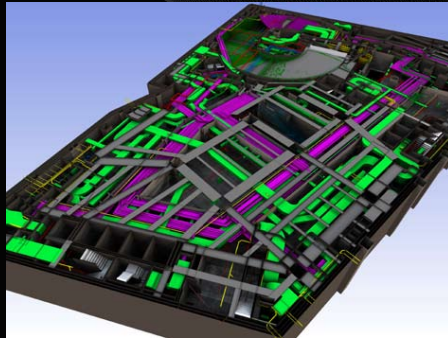


BIM Project Type

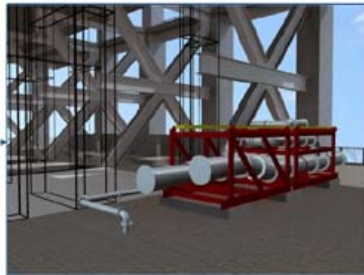


Complicated Geometry: Dubai Ocean Height One
(Courtesy: Aedas and Mr Andrew Broomberg)

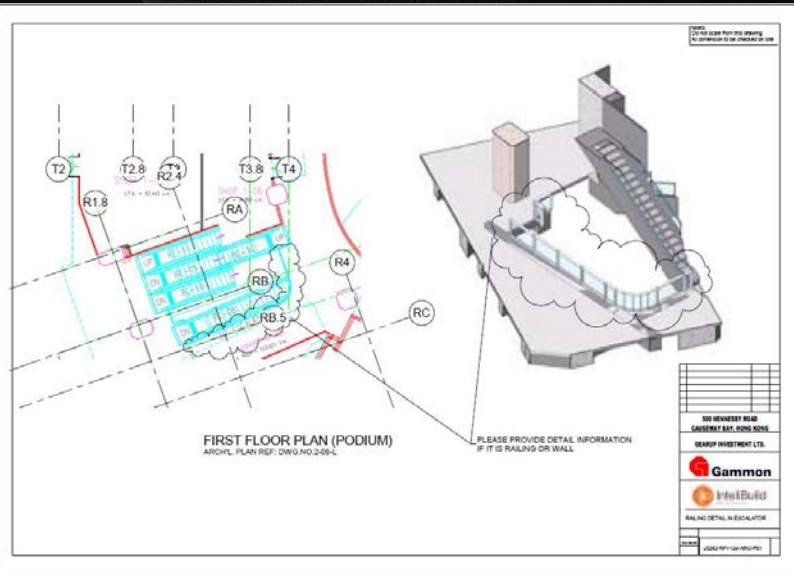
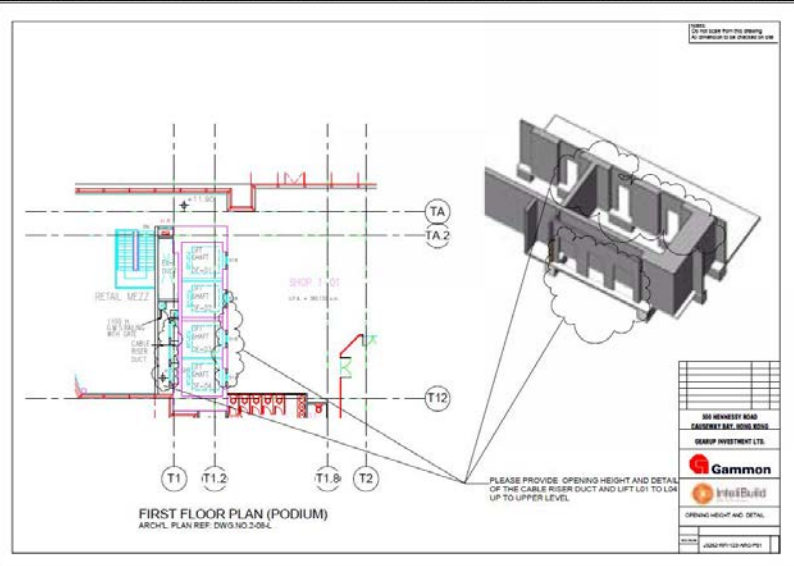
* Winner of Autodesk BIM Awards 2007 - Hong Kong, Macau and Taiwan



Pipe Module Installation

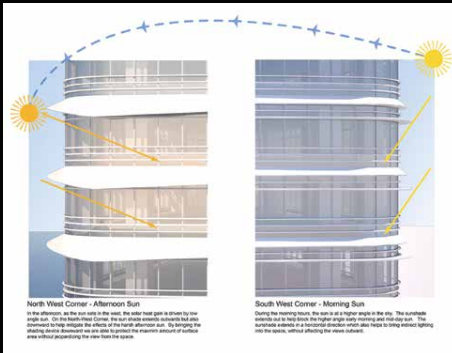


Pipe Rack Units



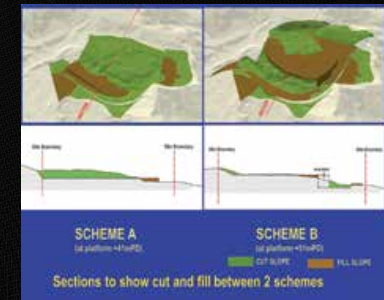
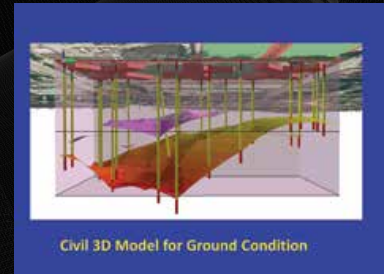
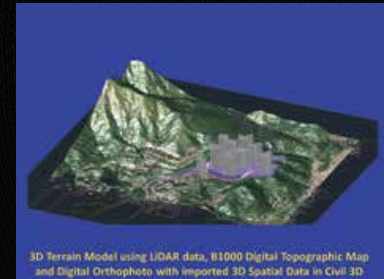
Redevelopment of Hennessy Centre

* Winner of Autodesk BIM Awards 2010 - Hong Kong, Macau and Taiwan



Proposed Office Development at 14-30 King Wah Road

* Winner of Autodesk BIM Awards 2014 - Hong Kong, Macau and Taiwan



Bridging the Gaps with our Core Values – Successful Transformation of Revit Model to Enable Civil 3D/GIS/Revit Integration and Lighting Simulation & Rendering

* Winner of Autodesk BIM Awards 2014 - Hong Kong, Macau and Taiwan



Fig. 08 The window wall being modeled by the detail level to maintain/guard panel design, existing Architect and Facade design consultant to ensure the visual impact on site.

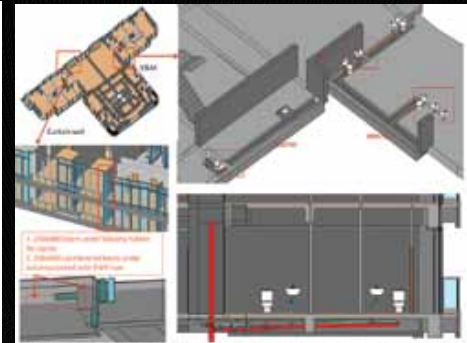


Fig. 07 Design construction of structural & drainage system within curtain wall and outside window wall facade of main structure.

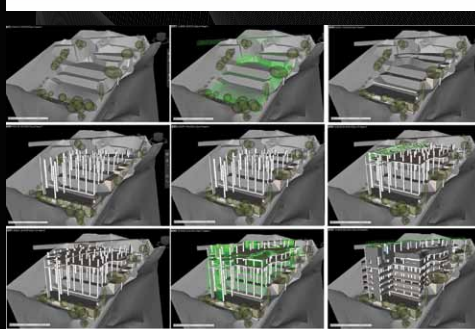


Fig. 05 Captured views of Navisworks4D simulation to visualize the construction process of the formation work and basement structure.

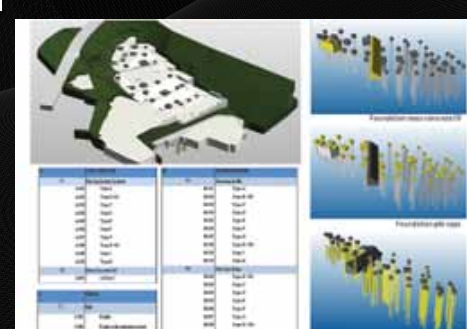


Fig. 21 Revit BIM model for quantity take-off of foundation work and main concrete base/E, and associated schedule of quantity.



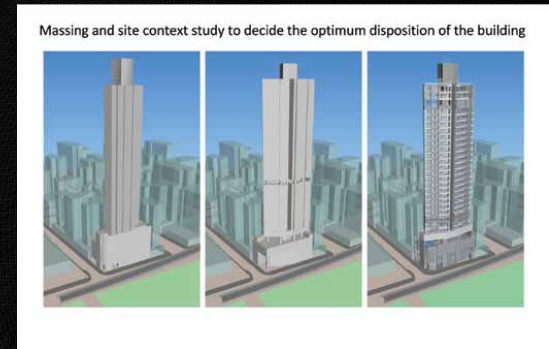
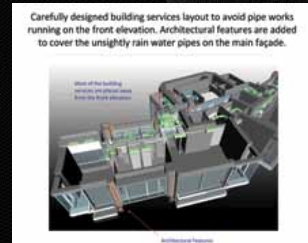
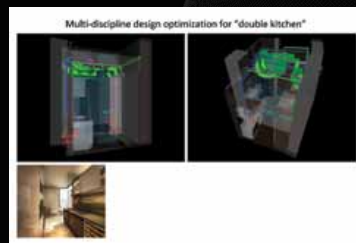
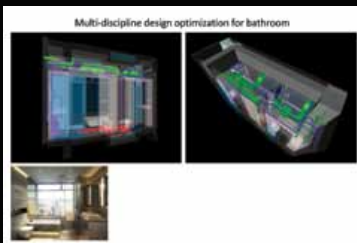
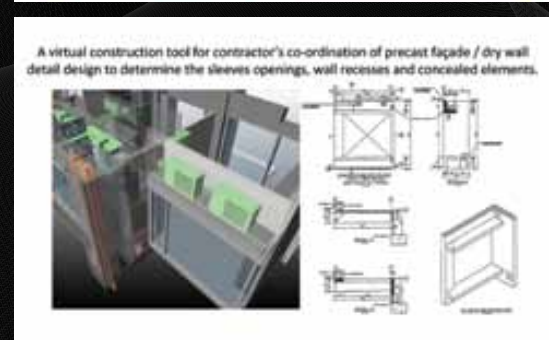
Fig. 22 Revit BIM model for quantity take-off of window wall system, and associated schedule of quantity.



Fig. 10 Revit BIM model for quantity take-off of interior finishing, and associated schedule of quantity.

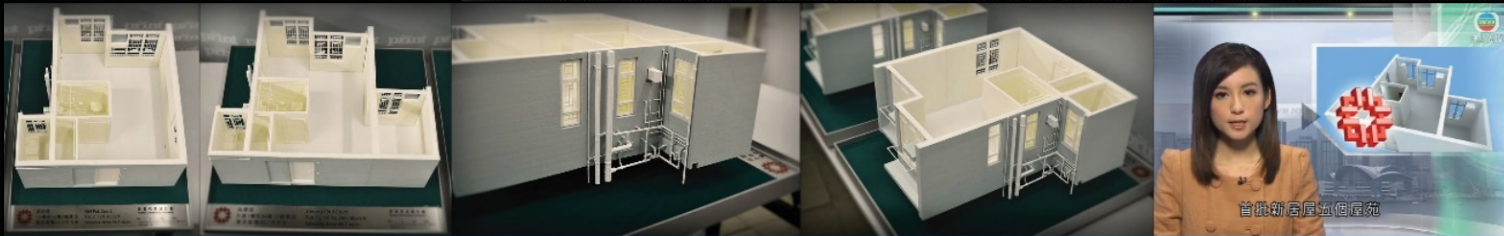
The University Heights Redevelopment

* Winner of Autodesk BIM Awards 2013 - Hong Kong, Macau and Taiwan



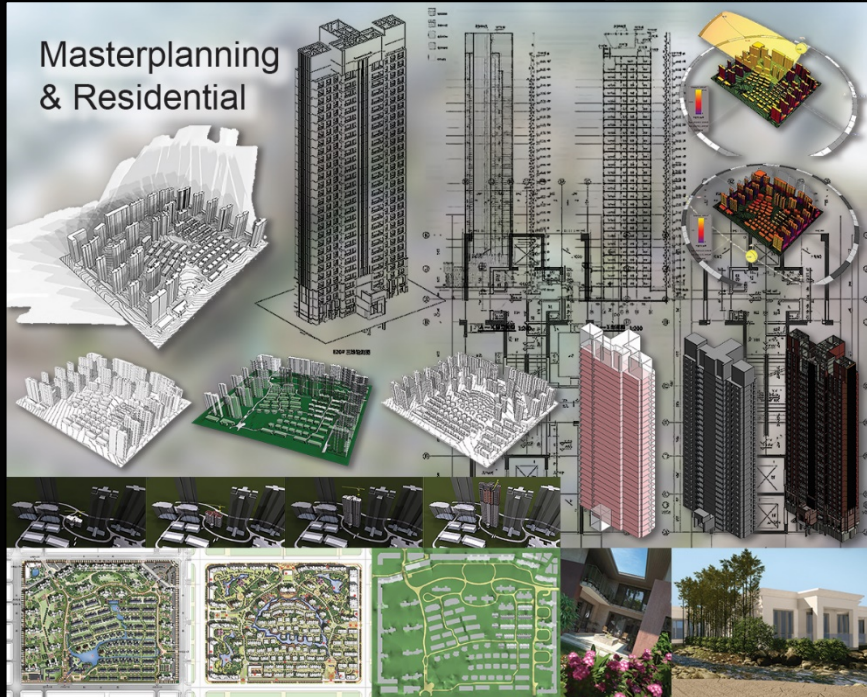
High Park Grand

* Winner of Autodesk BIM Awards 2013 - Hong Kong, Macau and Taiwan

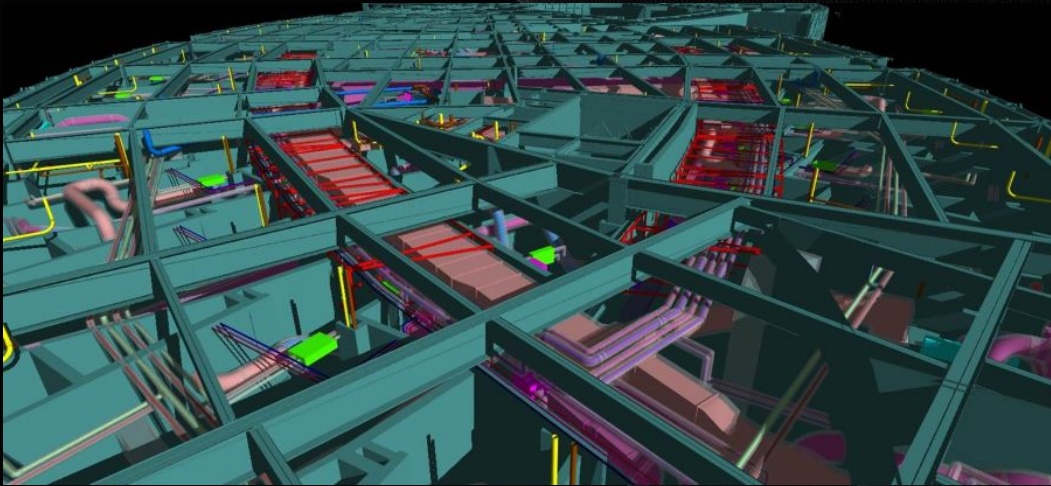


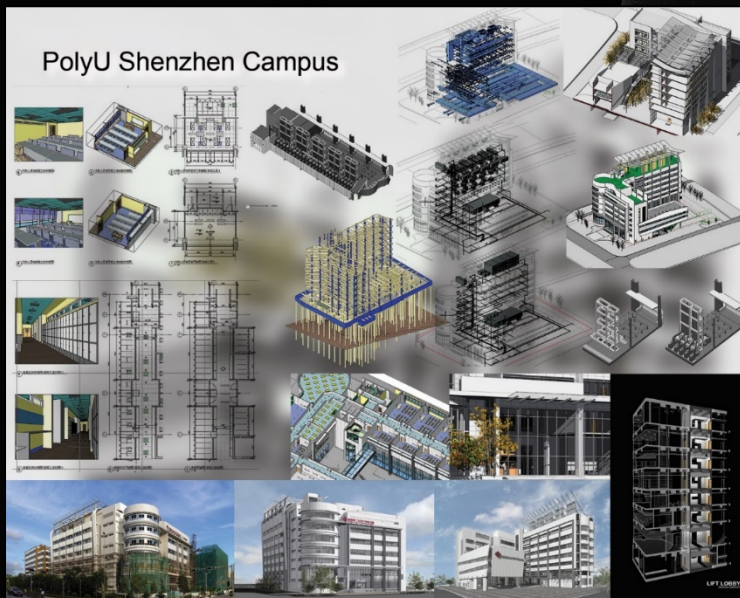
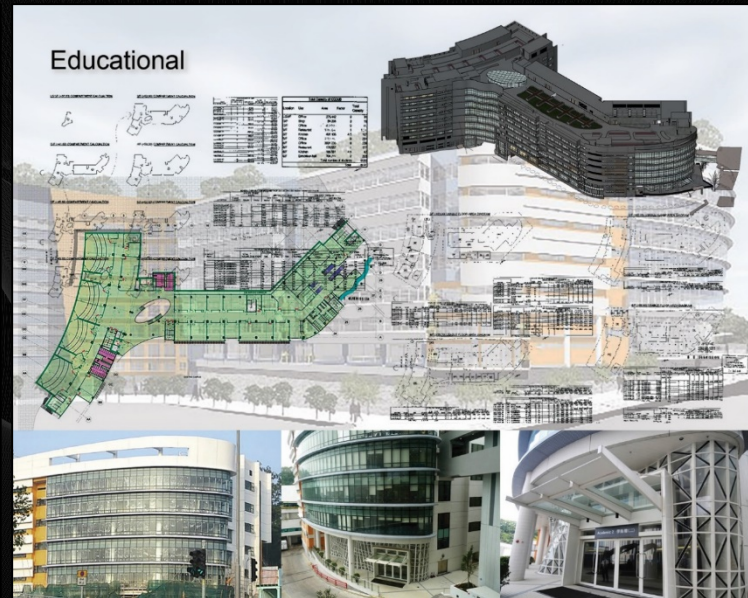
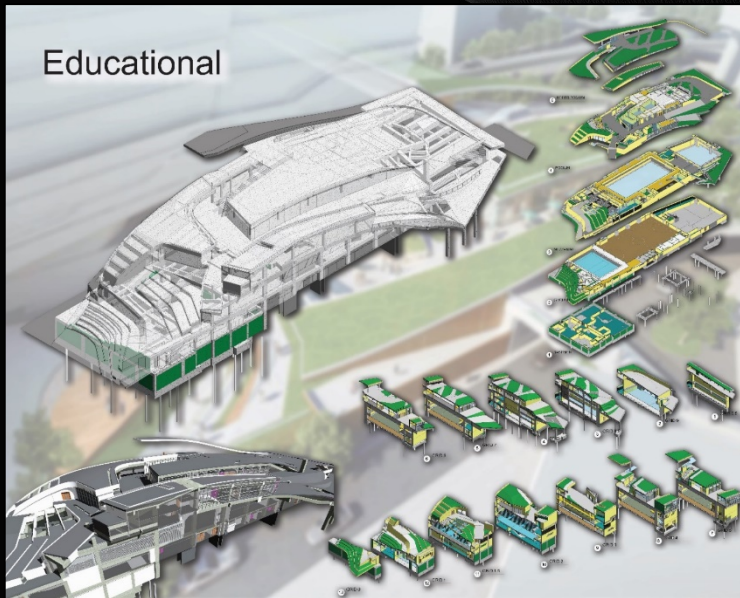
Residential











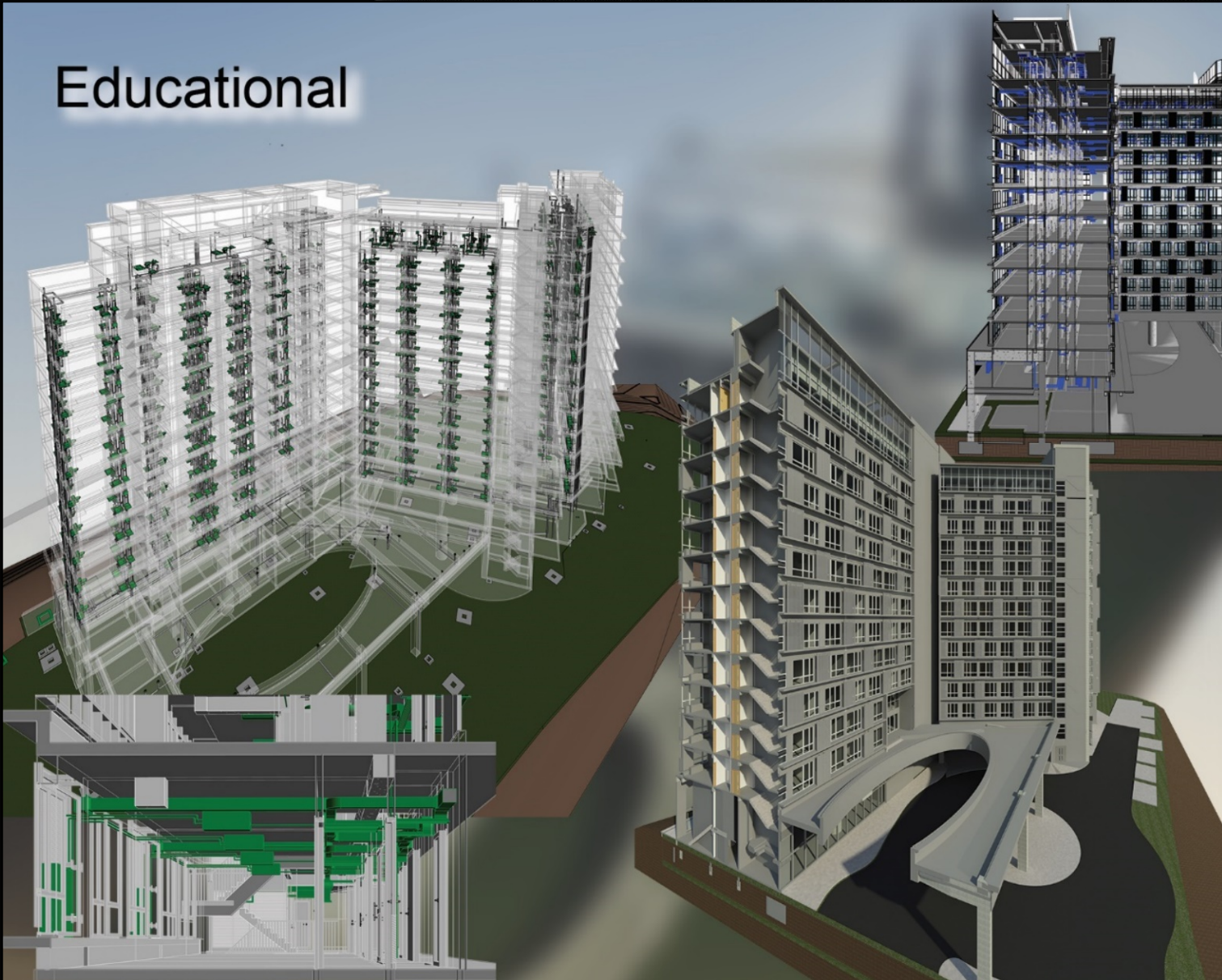
CCCUB

* Winner of Autodesk BIM Awards 2007 - Hong Kong, Macau and Taiwan

The PolyU Campus in the Shenzhen Virtual University Science Park

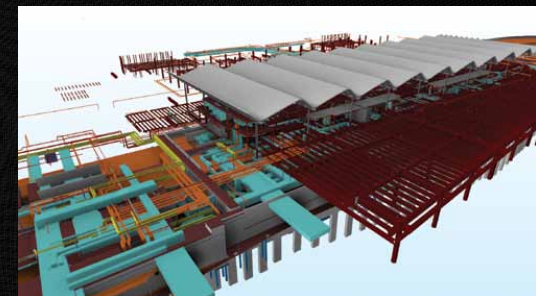
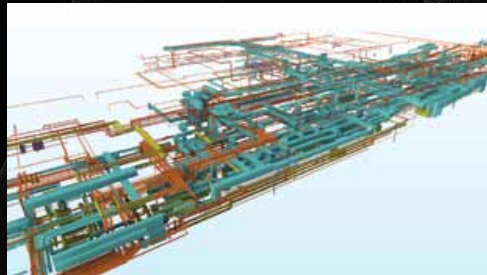
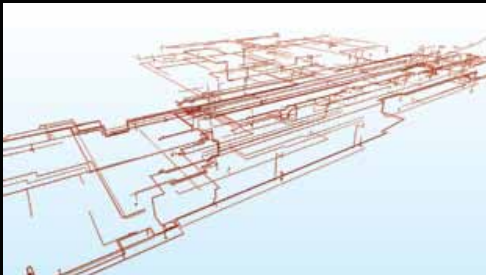
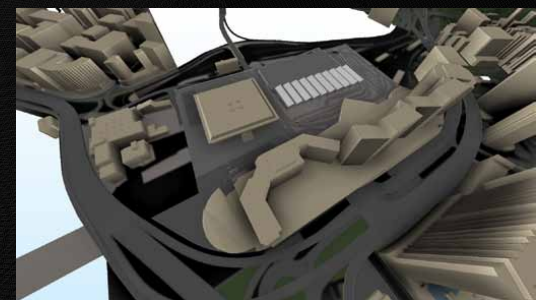
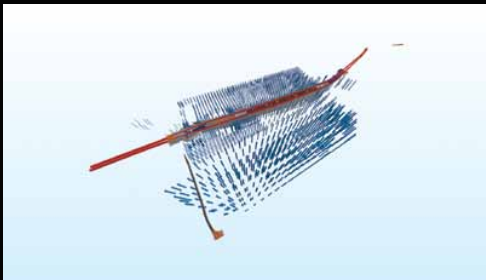
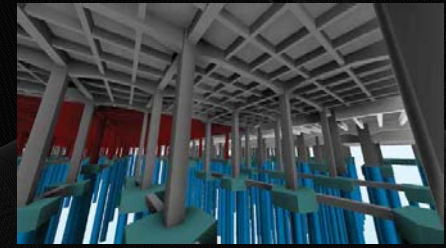
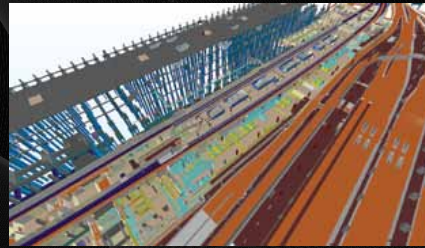
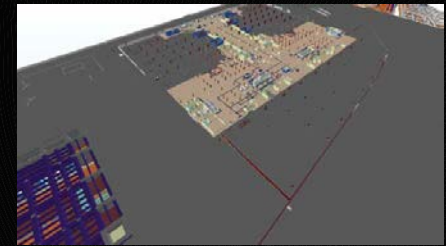
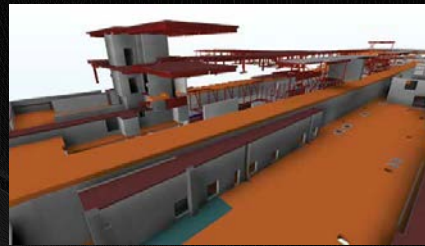
* Winner of Autodesk BIM Awards 2009 - Hong Kong, Macau and Taiwan

Educational



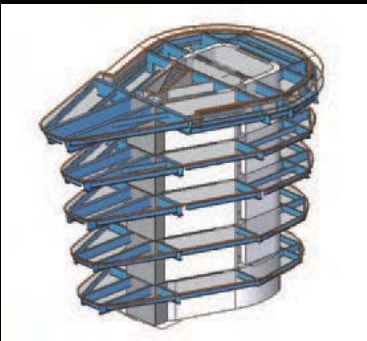
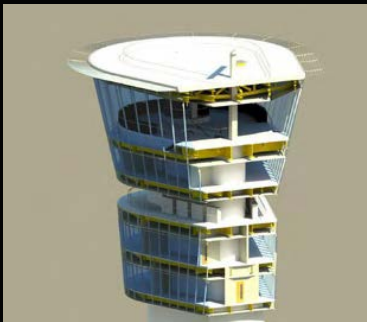


* Winner of Autodesk BIM Awards 2009 - Hong Kong, Macau and Taiwan



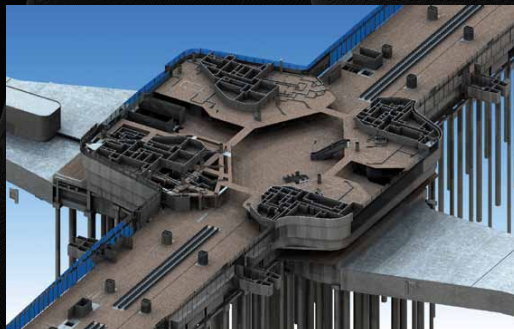
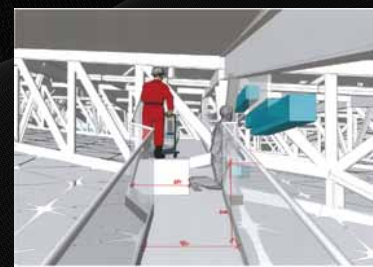
Hung Hom Station & Approach Tunnels

* Winner of Autodesk BIM Awards 2013 - Hong Kong, Macau and Taiwan



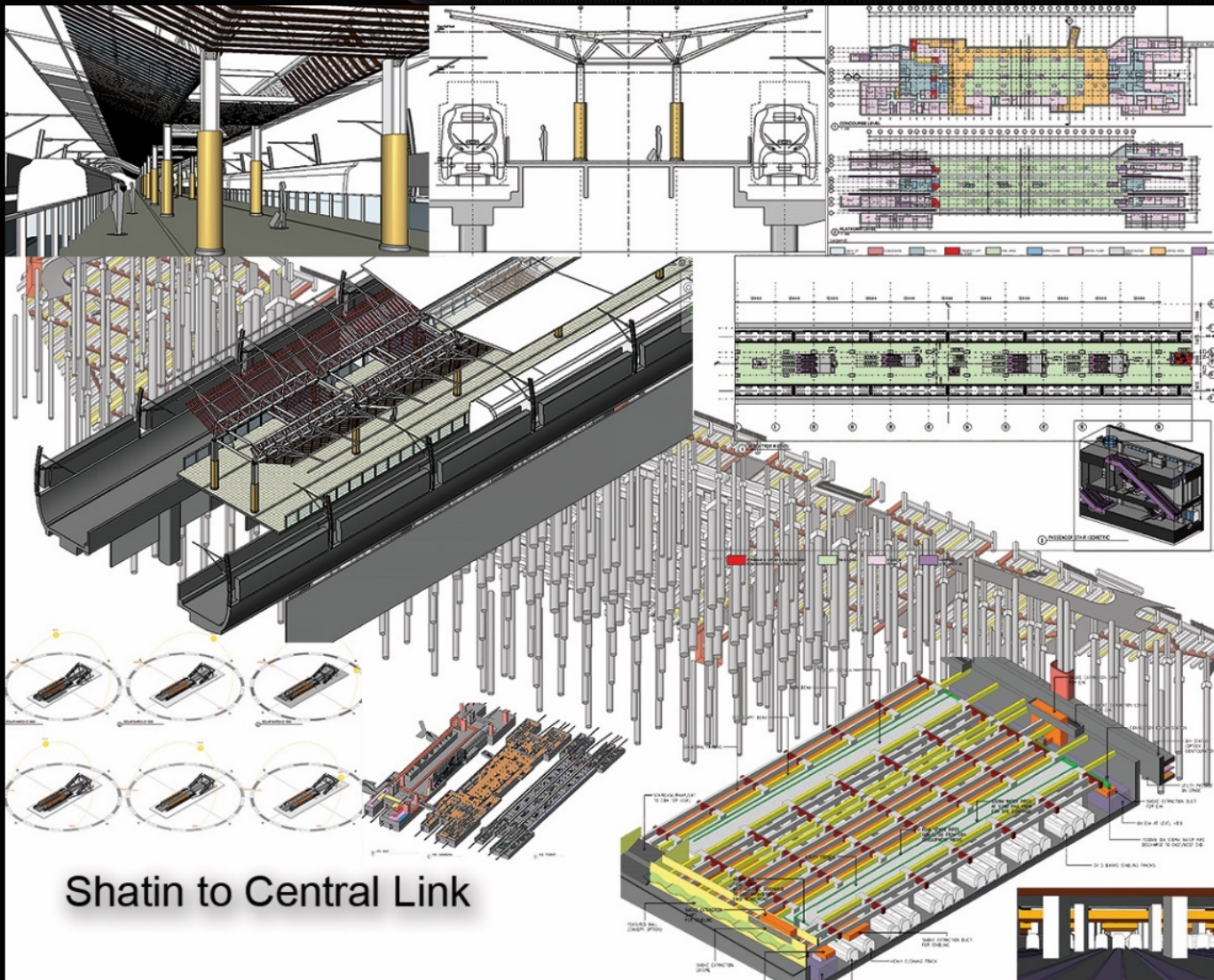
the Chhatrapati Shivaji International Airport Air Traffic Control Tower & Technical Block
– for the new airport in Mumbai, India

* Winner of Autodesk BIM Awards 2009 - Hong Kong, Macau and Taiwan



Midfield Development Design Consultancy Services

* Winner of Autodesk BIM Awards 2009 - Hong Kong, Macau and Taiwan



* Winner of Autodesk BIM Awards 2010 - Hong Kong, Macau and Taiwan

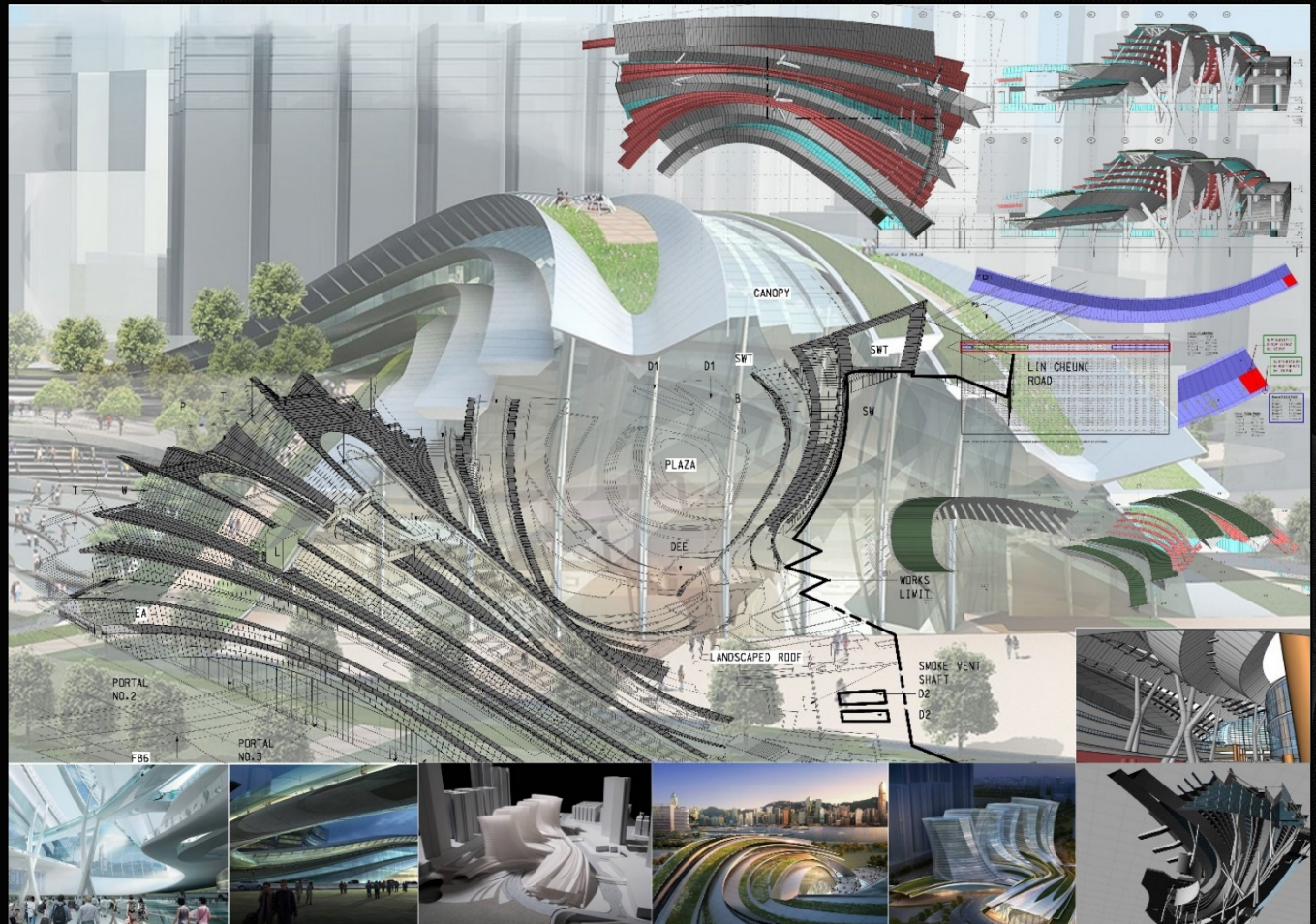
Autodesk

Lead the Way

Autodesk Hong Kong
BIM Awards 2012

Autodesk

Better by Design

Autodesk Hong Kong
BIM Awards 2010

Express Rail Link – West Kowloon Terminus

- * Winner of Autodesk BIM Awards 2010 - Hong Kong, Macau and Taiwan
- * Winner of Autodesk BIM Awards 2012 - Hong Kong, Macau and Taiwan





Heritage Consultancy - Victoria Peak Fire Station

- * Winner of buildingSMART Hong Kong International BIM Award 2015
- * Winner of Autodesk BIM Awards 2015 - Hong Kong, Macau and Taiwan

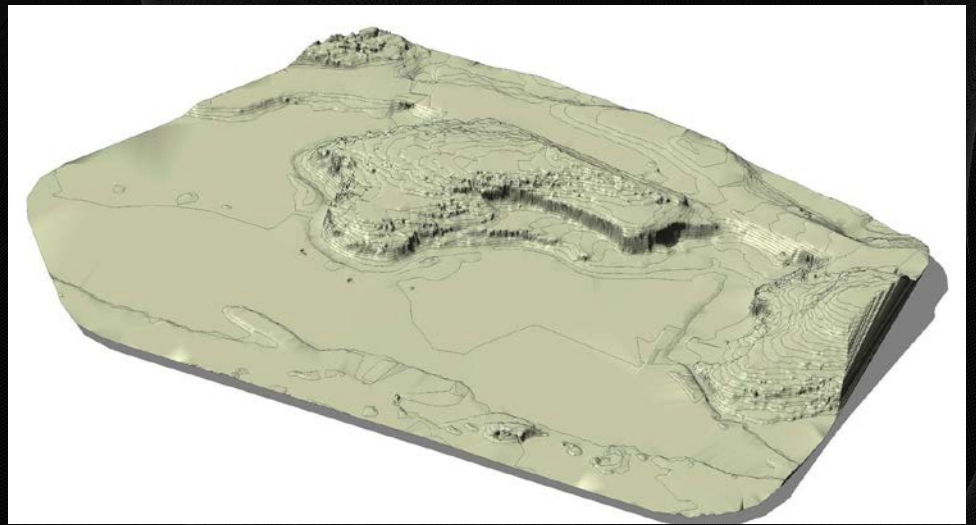
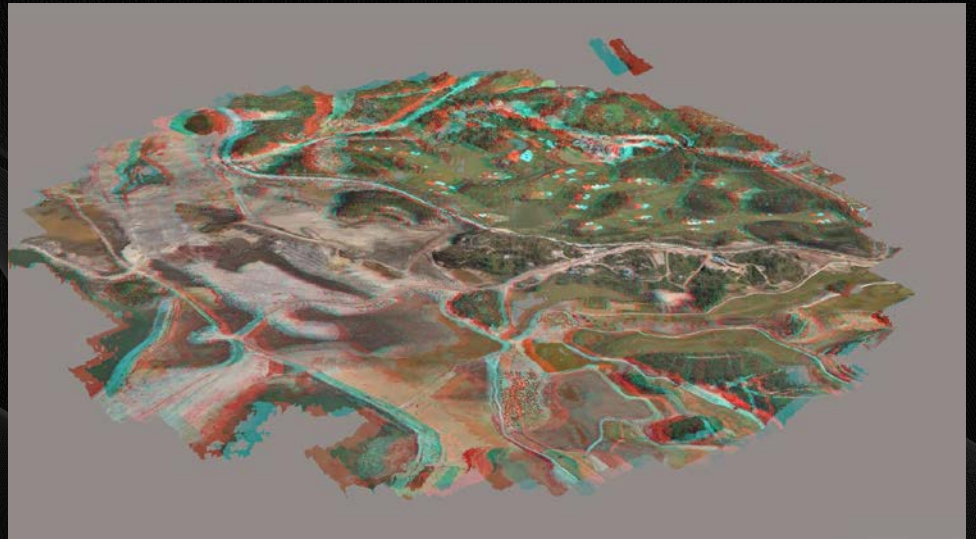


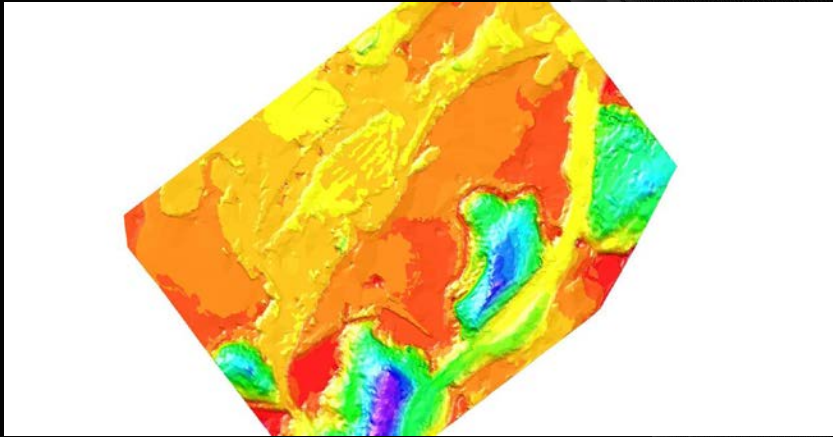
BIM Phases





Photogrammetry





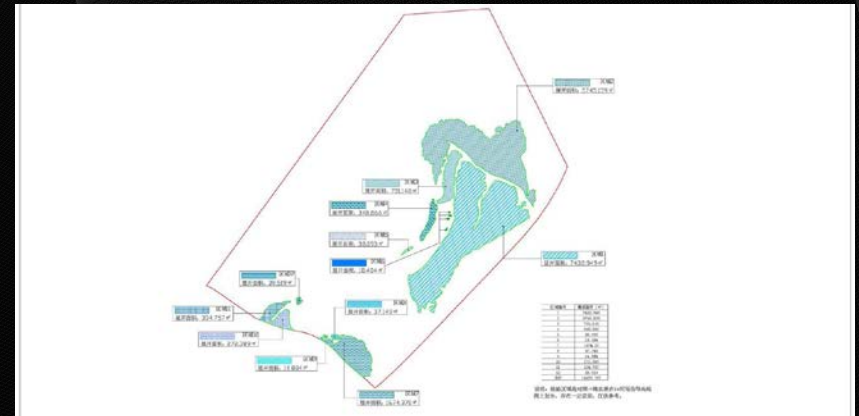
场地汇水分析



场地植被表面积统计

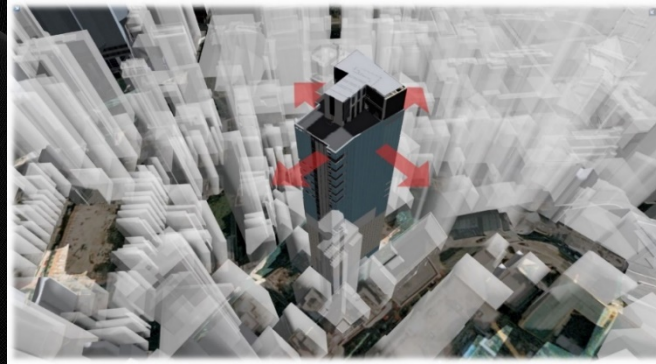


现状场地高程和设计高程对比

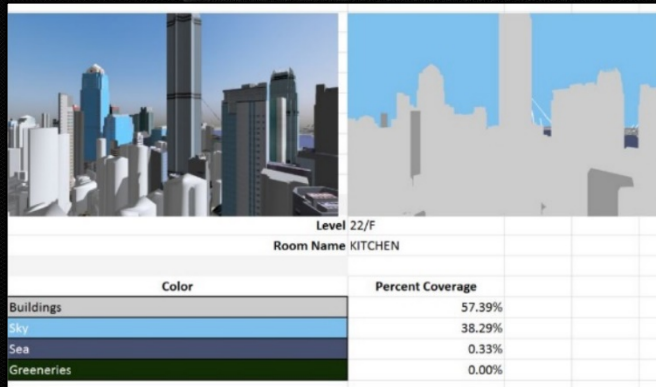
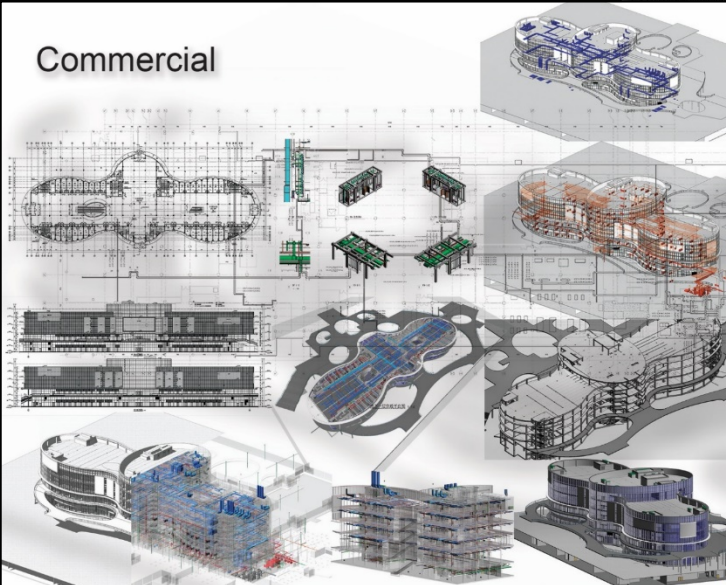


场地任意断面生成

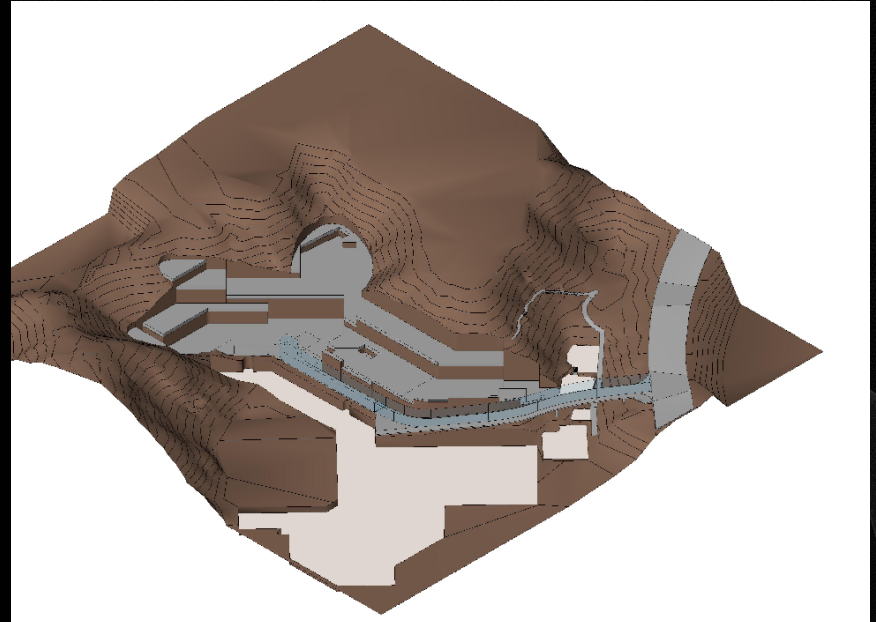
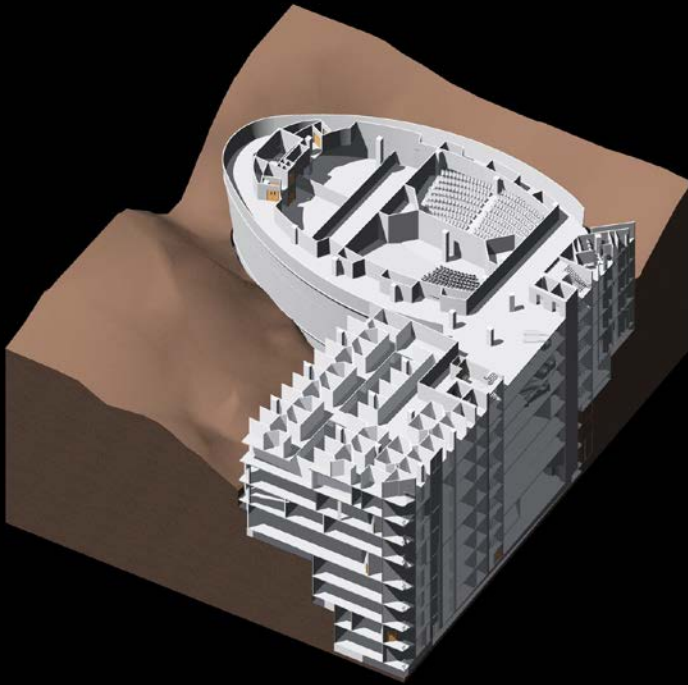
Commercial

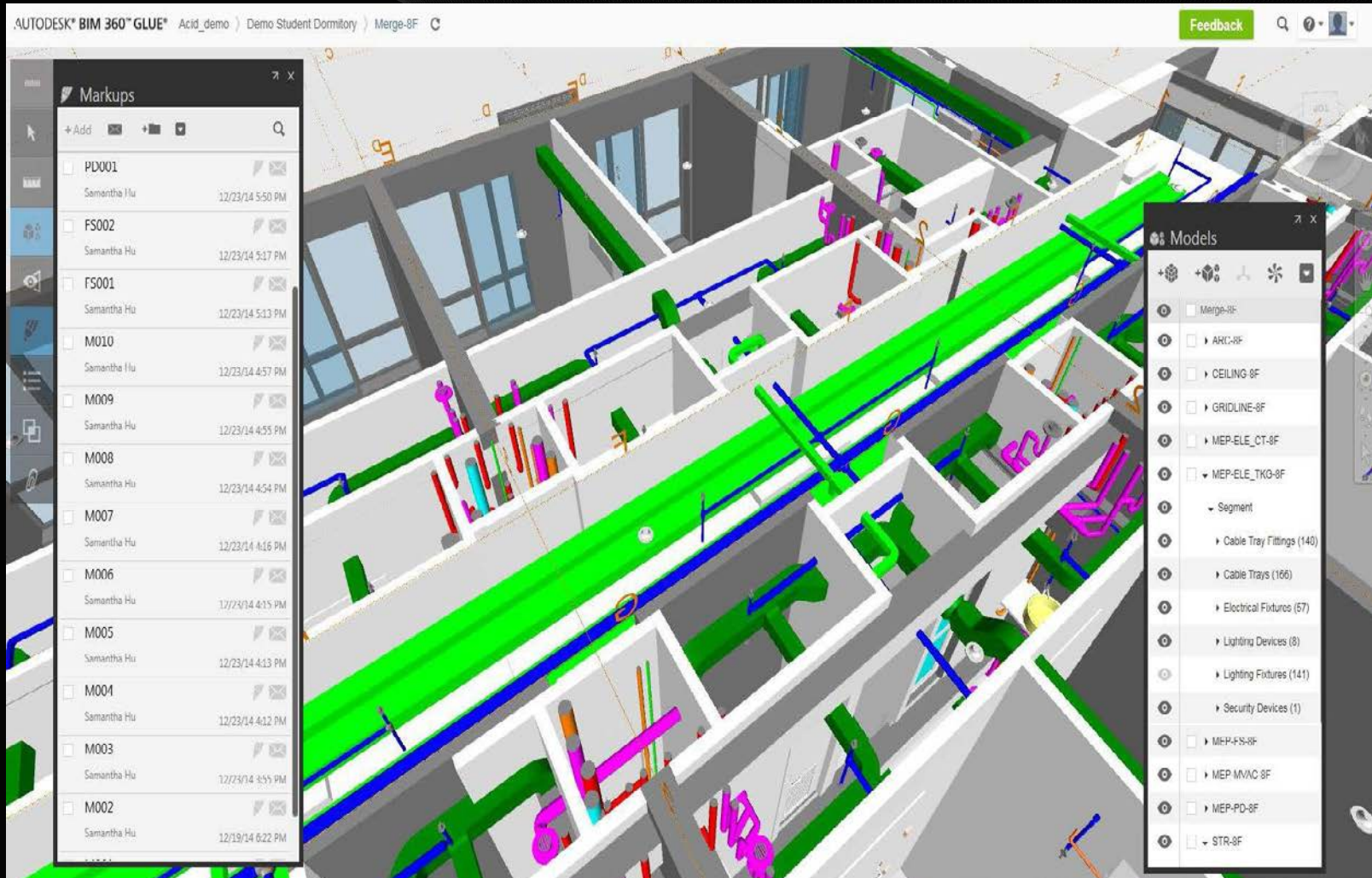


Commercial



View Analysis for Commercial Development





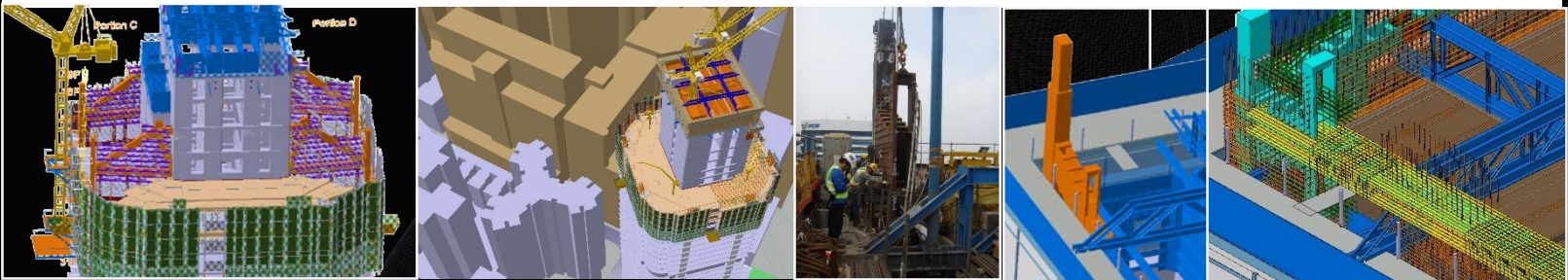
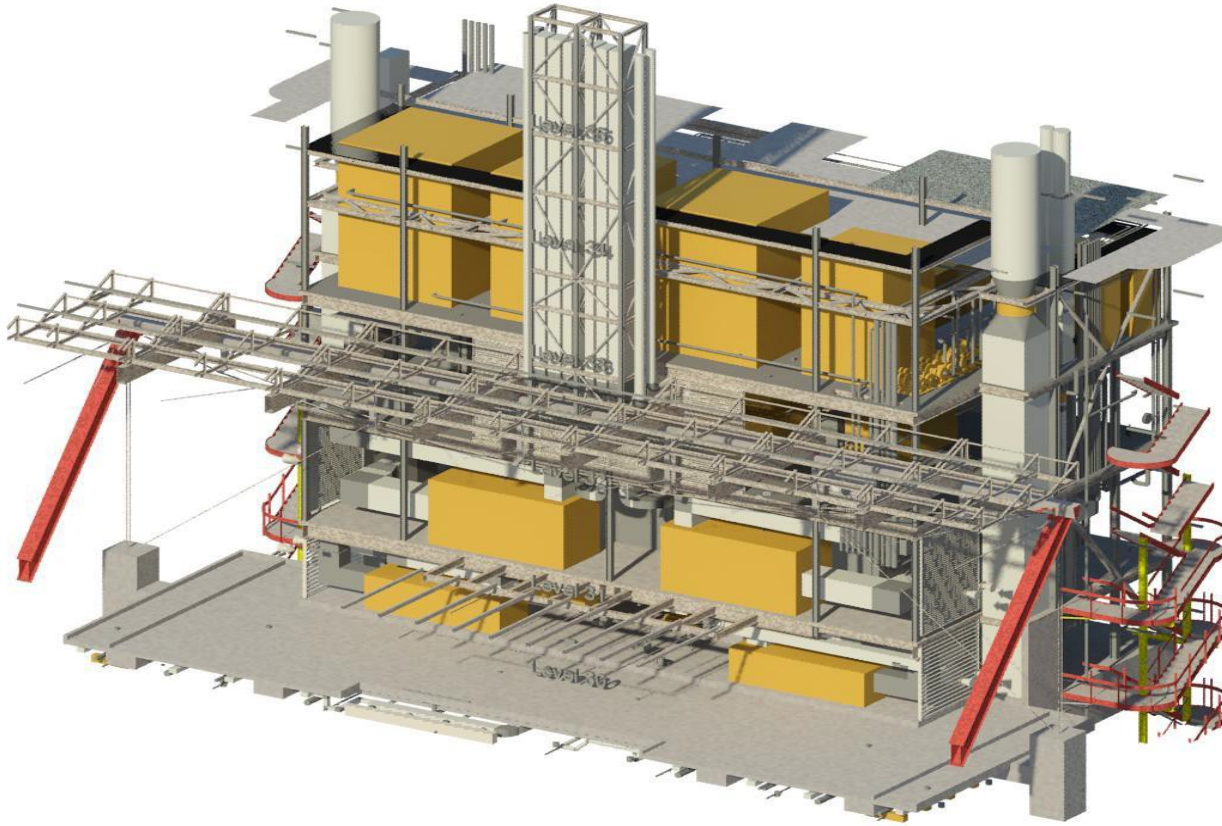
[REDACTED]
[REDACTED]
[REDACTED] Contract

Specification
Section A – Preliminaries

16. BUILDING INFORMATION MODELING

16.01 Building Information Modeling (BIM)

- a. 3D Building Information Modelling (BIM) was used for the design of the Project. That BIM 3D Model developed in design stage will be provided to the Contractor for information and for reference only at the commencement of the Contract. The Contractor shall take over the BIM 3D Model provided, and may adopt that Model, or produce its own BIM 3D Model, for the purposes of construction coordination and production of combined services drawings, builders work drawings and facility management use, etc.. The Contractor shall update the BIM 3D model with a design log recording the changes every month and submit to the Project Manager for review.
- b. The Contractor shall use BIM processes and technologies as approved by the Project Manager on the Project.
- c. The Contractor shall update the 3D model in accordance with the BIM specification as attached Appendix A4. The Contractor may propose revisions to the specification although these shall only be adopted upon written approval of the Project Manager.
- d. The Contractor shall provide their own hardware, software and internet communication links to fully support the full deployment and application of the BIM process. The Contractor shall also provide 2 sets of suitable hardware and software for the Project Manager to review the BIM Models.



The screenshot displays the Mermaid FM-TXT 2-12-14 v2.nwd software interface, which is a Facility Management (FM) and Building Information Modeling (BIM) tool. The interface is divided into several sections:


- Top Left:** A sidebar menu titled "Viewpoints" containing a list of views: 00-GENERAL VIEWS, 01-Exterior, 02-Queue, 03-Ridepath, 04-Catwalk, 05-BOH, 42-BOH Locker Room, 43-BOH Maintenance..., 44-BOH HPU 110, and 45-BOH ER 112. Below this are sections for System, System Assets, Spaces, Room Data Sheet, and Work Order.
- Top Center:** A 3D architectural rendering of a hallway with yellow walls, a grey floor, and a ceiling with various colored pipes and fixtures. A yellow "Locker Room" label is visible on the floor.
- Top Right:** A "Lighting Type F418 2x4 Troffer.pdf" window showing a technical drawing of a lighting fixture. The drawing includes a title "2' X 4' DESIGNER AIR HANDLING", a description "2, 3, or 4 Lamp 110 or 18 Prismatic Acrylic Lens", and a list of specifications.
- Bottom Left:** A "MENU" bar with buttons for Dashboard, BIM, Facility, Work Order, Search, and Quick Sync.
- Bottom Center:** A 3D model of a gate valve assembly, showing various pipes, valves, and fittings in different colors (red, green, yellow, grey).
- Bottom Right:** A "PROPERTIES" panel for the selected component, "Gate Valve". It contains fields for Name, Description, Asset Identifier (AE 5542), BARCODE (5428), Type, Manufacturer (NIBCO), Expected Life (n/a), and ExtObject (NoValueType). Below these are sections for Documents and a list of documents, including "Gate Valve Product Data".

The interface also features a top navigation bar with buttons for Dashboard, BIM, Facility, Work Order, Search, and Quick Sync. At the bottom, there is a status bar with the text "EcoDomus David Adkisson - General Hospital" and a "Logout" button.




BIM Policies

Home	BIM	HKIBIM	BIM in HK	Hong Kong BIM Conference 2015	Certified Expert / Training	Tender Notice
------	-----	--------	-----------	-------------------------------	-----------------------------	---------------



hong kong



HKIBIM
The Hong Kong Institute of Building Information Modelling
香港建築信息模擬學會

Contact Us


Notice of the 8th Annual General Meeting for HKIBIM

Notice is hereby given that the 8th Annual General Meeting of HKIBIM for the year of 2016 which will be held on 23 February 2016(Tuesday).

- Date:
 - 23 Feb 2016 (Tuesday);
- Time
 - 6:00 p.m. ~ 8:00 p.m.
- Venue
 - Spotlight Recreational Club (博藝會), 4/F, Screen World, Whampoa Garden, Hung Hom, Hong Kong
 - [GeoInfo Map](#) (Showing the path from Hung Hom to Spotlight Recreational Club)
- Rundown:
 - 6:00 p.m. Registration
 - 6:00 p.m. New members reception
 - 7:00 p.m. Membership certificates presentation ceremony and Certified Expert presentation ceremony
 - 7:30 p.m. AGM
 - 8:00 p.m. Dinner gathering at Spotlight Recreational Club (博藝會) (HK\$200 for member, HK\$300 for non-member)
- AGM Agenda:
 - To adopt the agenda of the 8th Annual General Meeting for the year of 2016;
 - To adopt the minutes of 7th Annual General Meeting for the year of 2015;
 - Chairman's Report for the year of 2015 □ 2016;
 - Secretary's Report for the year of 2015 □ 2016;
 - Treasurer's Statement of Accounts for the year of 2015 □ 2016;
 - To receive and adopt the Statement of Accounts for the year of 2015 □ 2016;
 - A.O.B.;
 - AGM Concluded;
 - A Dinner Gathering will be arranged immediately after the AGM at Spotlight Recreational Club (博藝會) (HK\$200 for member, HK\$300 for non-member);
 - Please register for the AGM and Dinner gathering at <http://goo.gl/forms/Xved4R4krX> by 18 February 2016 (Thursday).

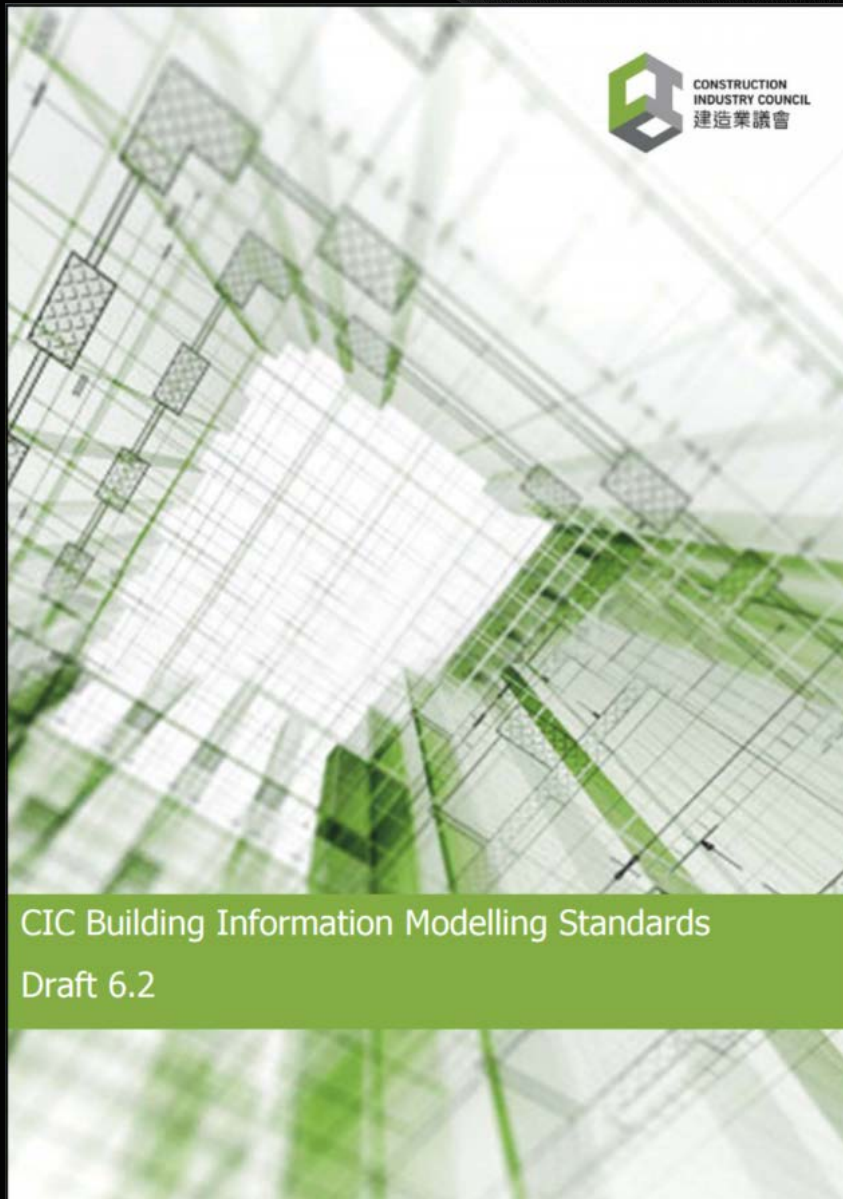
By order of the Board
Dr Neo Chan
Hon. Secretary
15-Feb-2016

Search for:

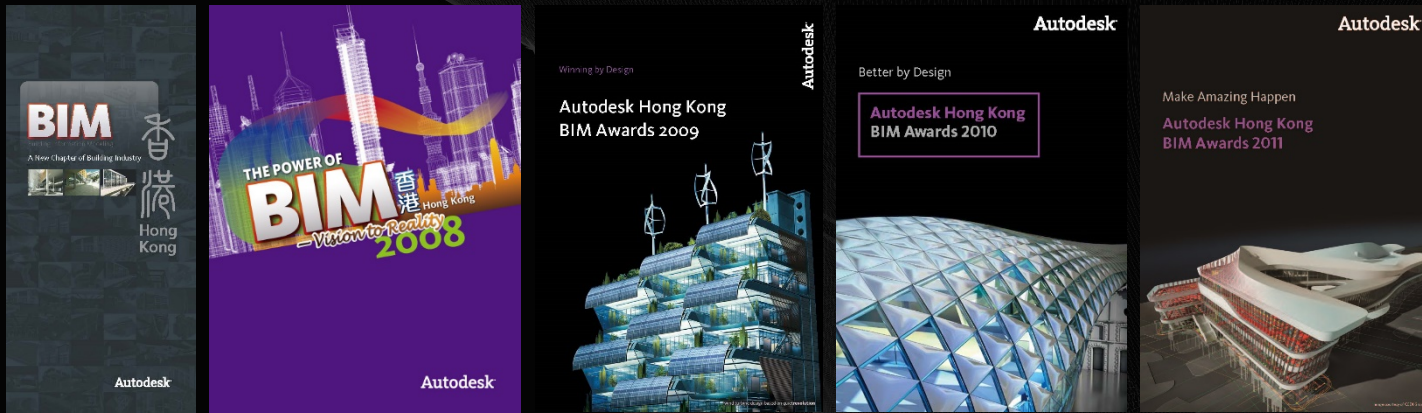


Quick Links

- CIC's BIM Standards (Phase One) Oct-2015
- Hong Kong BIM Conference 2015
- Membership renewal 2015
- Membership renewal 2014
- Membership Application Form
- BIM Project Specification
- HKIBIM@Slideshare
- HKIBIM Facebook Page
- HKIBIM LinkedIn Page
- BIM@CIC
- Tender Notice



CIC Building Information Modelling Standards
Draft 6.2





建造業議會 全力推動BIM發展 畫出業界新標準

建築信息模擬 (BIM) 是建造業近年的熱門話題，該技術能全面管理建造項目在整個生命週期內的相關信息，提升生產效率及減低工地風險，並實現優化的監控施工過程。為推動本地建造業使用 BIM，及表揚為推動 BIM 而作出貢獻之人士，建造業議會於今年 3 月 11 日假環球貿易廣場的天際 100 香港觀景台舉辦建造業首屆「卓越建築信息模擬獎」(BIM Excellence Awards) 頒獎典禮。當晚建造業議會與建造業界代表分享過去一年的工作成果，以及得獎者們細說得獎感受與應用 BIM 的心得。

撰文 余美玉 | 攝影 謝銘深

作為一種建造業界的創新技術，建築信息模擬 (Building Information Modelling 或簡稱 BIM) 不單是一種二維繪圖工具，更是一種全新的管理工具，用以全面管理建造項目由籌備階段開始到建造階段，以至營運階段整個生命週期內的所有相關信息；BIM 亦開創新的工作方式，協助項目管理及執行，更有效監控

建造程序，有助跨界別合作，內部協調，對外溝通，解決問題及風險管理。同時，BIM 可透過採集數據採集和整合流程提高生產力，使當前建造業的壓力得以舒緩。

業界開始了解 BIM 的各項優點，亦發現 BIM 已經是全球建造業的大勢所趨，相比其他國家的 BIM 發展

業界積極回應 貢獻值得表揚

是次評審團成員具廣泛代表性，分別來自業界不同的專業組織及團體。在評審過程中，評審團成員見證了建造業的變革，在約 80 個高水平的提名中，不單為評審

項目，更見證了建造業對 BIM 的積極響應。在評審團成員的全面推行 BIM，得獎者之一的金門建築有限公司蘇國亮工程師稱，在建造業議會及政府牽頭大力推動下，2014 年可說是建造業發展 BIM 的里程碑，也相信未來香港的 BIM 發展於亞洲區將最為突出，另一得獎者



建造業議會執行總監陶博士 (右四) 與一眾年度青年 BIMer (Young Bimer of the Year) 合照。



ACID BIM Manual

Hong Kong Institute of
Building Information Modelling

BIM Project Specification



HKIBIM Specification (Rev 2.1)

Page 1 of 26

HKIBIM BIM Manual



MTR CORPORATION

OPERATIONS DIVISION

BUILDING INFORMATION MODELING MANUAL

DRAFT

VERSION <u>A</u>	ISSUE DATE 30/09/10
The following pages have been revised and are now included in this version of the Procedure.	
Page (s)	Date of Revision
	30/09/10

	JOB TITLE	NAME	SIGNATURE
BY	Building & Architectural Engineering Manager	David Fung	
CONTROLLER	Civil & Building Engineering Manager	Philip Leung	
APPROVAL	General Manager-Technical & Engineering Services	David Leung	

MTR BIM Manual

APPLICATION FORM



The Hong Kong Institute of
Building Information Modelling
香港建築信息模擬學會



Member of VTC Group
VTC 機構成員

IVE Engineering

Your Partner in Professional Development

20 Tsing Yi Road, Tsing Yi Island, N.T., Hong Kong Fax: 3475 0845 Email: EDiT@vtc.edu.hk

Apply for (Put a ✓ in the box(es) of the course(s) you apply for)	Deadline by 15/9/2015 Exam Day 26/9/15 Put ✓ for selection	Deadline by 11/10/2015 Exam Day 24/10/15 Put ✓ for selection	Course Fee Separate crossed cheque for each course made payable to "Vocational Training Council"	
			(HK\$)	Cheque No.
1.1 CEI Basic (ArchiCAD)			600	
1.2 CEI Basic (Revit)			600	
2.1 CEII Architecture (ArchiCAD)			1,200	
2.2 CEII Architecture (Revit)			1,200	
2.3 CEII Structure (Revit)			1,200	
2.4 CEII MEP (Revit)			1,200	
2.5 CEII Revit Families			1,200	

Personal Particulars

Name: (should be the name shown on HKID/Passport)	(Name in English, family name first)	(Chinese name)
HKID/Passport No.:	()	Birthdate: (dd / mm / yy)
Correspondence Address:		Office Phone:
		Mobile Phone:
		Fax:
Email Address:		HKIBIM Membership No.:

Declaration (*Delete where appropriate)

I wish to receive information from VTC (including course information from its member institutions): (Yes / No) *

I declare that the information provided in this form is, to my best knowledge, accurate and complete.
I agree to abide by the rules and regulations of IVE if I am admitted to the course.
I understand that the information provided in the form will be used by VTC in the admission process
and course administration.

Signature:

Date:

Notes:

- Whether a course will be offered depends on the enrolment and is subject to approval by VTC.
- The applicant will be informed of the timetable one week before the commencement of class.
- To facilitate communication, the applicant should provide in the Application Form a contact number of mobile phone which can receive SMS messages.

(June 2015)

EDiT@vtc.edu.hk

HKIBIM accredited BIM Certified Expert Examination

(Course Code: 1525)



The Hong Kong Institute of
Building Information Modelling
香港建築信息模擬學會



Member of VTC Group
VTC 機構成員

Certified Expert Level I Examination

Available categories:

- 1.1. CEI Basic (ArchiCAD)
- 1.2. CEI Basic (Revit)

- 3 hours
- 26/9/2015 (Sat)
- HK\$600.00

Certified Expert Level II Examination

Available categories:

- 2.1. CEII Architecture (ArchiCAD)
- 2.2. CEII Architecture (Revit)
- 2.3. CEII Structure (Revit)
- 2.4. CEII MEP (Revit)
- 2.5. CEII Revit Families

- 3 hours
- 24/10/2015 (Sat)
- HK\$1,200.00



Examination Venue

- BIM Centre, IVE (Morrison Hill)
- 6 Oi Kwan Road, Wanchai, Hong Kong
- Or, other BIM Centre of VTC

Application

- Submit the duly completed Application Form with a crossed cheque for the course fee of each course to:
Engineering Discipline In-service Training
IVE (Tsing Yi)
Rm B322, 20 Tsing Yi Road, Tsing Yi Island

Enquiries

T 2435 9423 (Mon-Fri 9:00-12:30 am & 1:30-5:00 pm)
E EDiT@vtc.edu.hk
W EDiT@vtc.edu.hk

(June 2015)

EDiT@vtc.edu.hk

BIM Management Matrix

Depth

Discipline

	Architecture	Structure	MEP	Cost Management	Construction Management
CEIII-BIM Management 30 hrs BIM Management implementations with Project Execution Plan, requirements and standards.					
CEIII-A CEIII Architecture (Revit) 36 hrs Architectural Concept Design, Detailed Design, Statutory Submission, Contract Documentations and Project Management level.	CEIII BIM Management				
CEIII-S CEIII Structure (Revit) 24 hrs Structural Concept Design, Detailed Design, Statutory Submission, Contract Documentations and Project Management level.	CEIII Architecture	CEIII Structure	CEIII MEP	CEIII Cost Management	CEIII Construction Management
CEIII-M CEIII MEP (Revit) 24 hrs Building Services Concept Design, Detailed Design, Statutory Submission, Contract Documentations and Project Management level.	CEII NavisWorks				
CEII-A CEII Architecture (Revit) 32 hrs Common operational commands in architectural BIM model for design visualization, co-ordination and production of professional drawings.	CEII Families (Revit)				
CEII-S CEII Structure (Revit) 32 hrs Collaboration of other project team disciplines producing collaborative design, and production of professional drawings. Integration of structural analysis.	CEII Architecture (Revit)	CEII Structure (Revit)	CEII MEP (Revit)		
CEI-Basic CEI Basic (Revit) 8 hrs System settings, parametric and compilation to building form, definition /editing properties, drawings sheets, B.Q. and overall BIM management.	CEI Basic (Revit)				

CEIII-Q
CEIII Cost Management
24 hrs
Information extraction to facilitate estimation, tendering process and cost control over BIM process.

CEIII-C
CEIII Construction Management
32 hrs
BIM application during construction phase to improve constructability, efficiency, extensive project management and logistic tasks on site.

CEII-N
CEII Navisworks
24 hrs
Clash Analysis among different BIM Systems and Construction sequences.

CEII-F
CEII Families (Revit)
21 hrs
Fundamental family building using Extrusion, Revolve, Blend, Sweep and Sweep Blend; to sophisticated parametric design principles.

CEII-M
CEII MEP (Revit)
32 hrs
Collaboration of other project team disciplines; producing collaborative design, and production of professional drawings.



The University of Hong Kong
Knowledge Exchange



HKUSPACE Community College
香港大學附屬學院



香港中文大學
The Chinese University of Hong Kong



CUSCS
香港中文大學專業進修學院
School of Continuing and Professional Studies
The Chinese University of Hong Kong



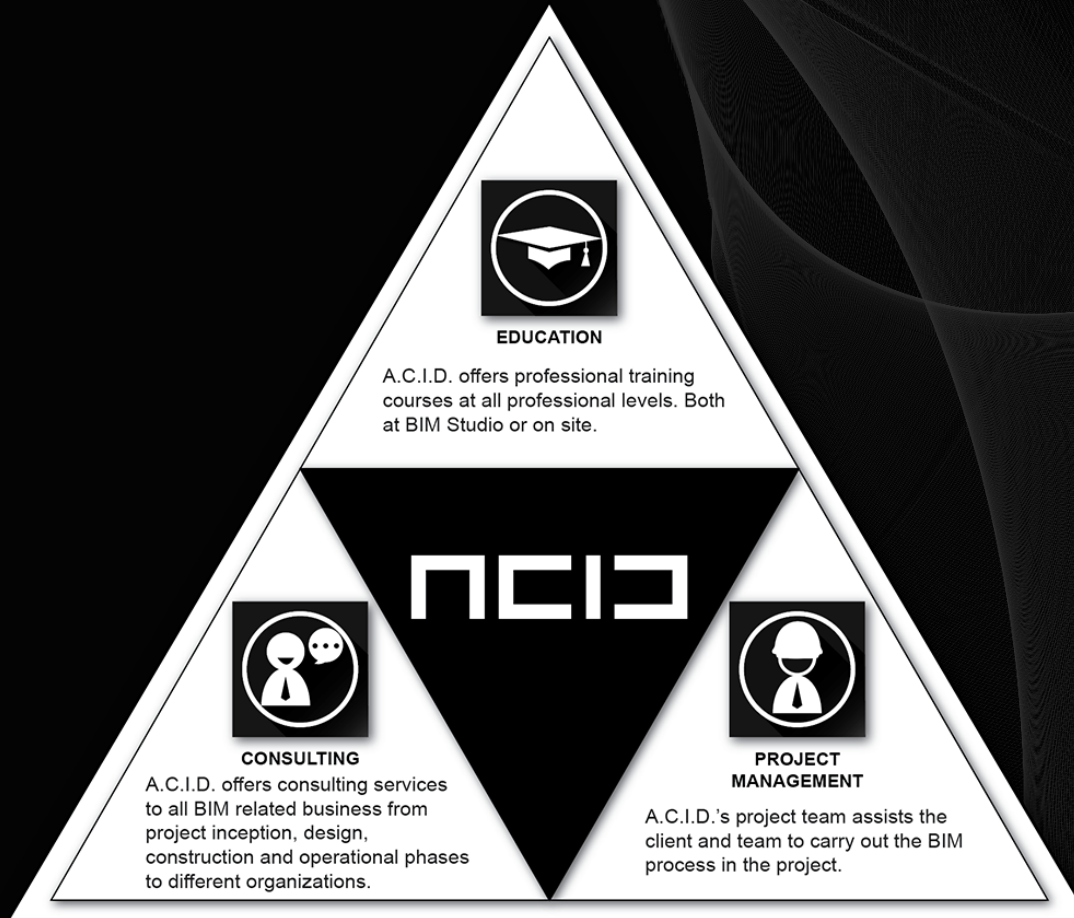
珠海學院
CHU HAI COLLEGE
OF HIGHER EDUCATION

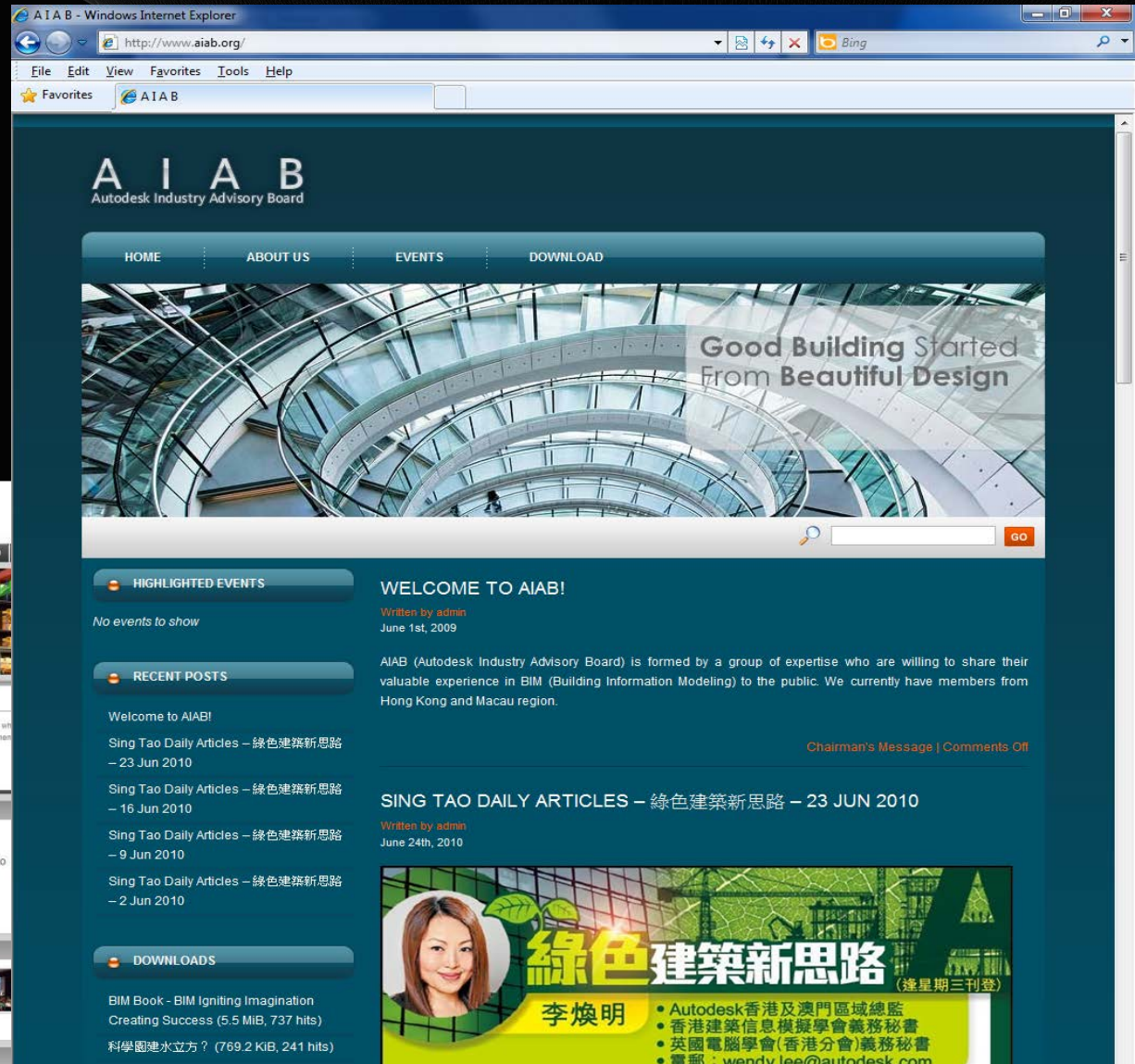
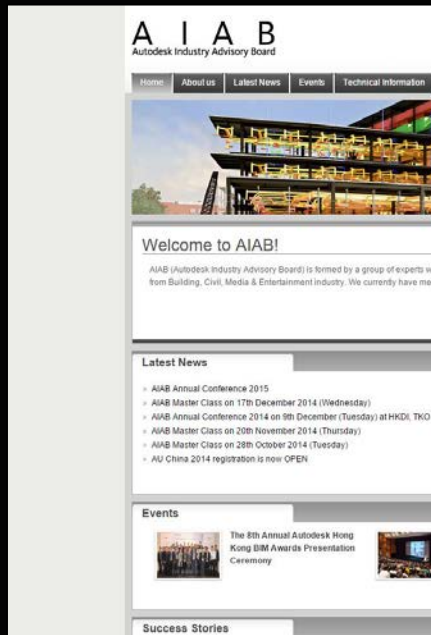



THE HONG KONG
POLYTECHNIC UNIVERSITY
香港理工大學

School of Professional Education
and Executive Development
專業進修學院

SPEED






Find
a Meetup Group

Start
a Meetup Group

English

Log in

Sign up



Home
Members
Sponsors
Photos
Discussions
More

Join us!

Hong Kong, Hong Kong

Founded Nov 21, 2014

BIMeets	189
Group reviews	2
Past Meetups	20
Our calendar	

Organizers:



Jake Lucier,
Carol P,
Desmond Leung,
Kelvin Tam, Mike Chan,
Stellar Leung



We're about:
Interior Design ·
Architecture ·
Construction · Autodesk ·
Revit · Building

Welcome to Hong Kong's Autodesk Revit User Group connecting to share our collective experience to drive and support Building Information Modeling, or BIM for short. A seasoned group of professionals will gather often to tackle tough questions, explore new ideas and pioneer BIM concepts throughout Asia with the worlds leading practices, top designers and engineers.

Join us

Join us and be the first to know when new Meetups are scheduled

Who do I know here?

Log in with Facebook to find out
By creating a Meetup account you agree to our Terms of Service

Recent Meetups

2 days ago · 7:00 PM

The Monkey King's resolution of the year: Revit vs BD?



38 BIMeets | ★★★★★ | 16 Photos

Sneak Peek from Marcin:

January 14 · 12:30 PM

What's new





All Files

Family Name Category [Search](#)

STE-STU-AEC-PedestalFireHydrant-WSD154



Parametric Pedestal Fire Hydrant according to Water Supplies Department Standard Drawings, Section 1 - Mainlaying, Drawing No. WSD 1.54

[Download](#)

Published on 07 January 2016 • By Ken Lee • In [Site_Utility](#) • Revit Version: 2014

STE-STU-AEC-SwanNeckFireHydrant-WSD155



Parametric Swan Neck Fire Hydrant (with band) according to Water Supplies Department Standard Drawings, Section 1 - Mainlaying, Drawing No. WSD 1.55

[Download](#)

Published on 06 January 2016 • By Ken Lee • In [Site_Utility](#) • Revit Version: 2014

STE-STU-AEC-GI_Bollard-H2179B



Parametric G.I. Bollard (with visibility band) according to Highways Department Standard Drawings, Section 2 - Street Furniture, Drawing No. H2179B

[Download](#)

Published on 06 January 2016 • By Ken Lee • In [Site_Utility](#) • Revit Version: 2014

STE-STU-AEC-EmergencyCrashGate-H2108B



Login

[Login](#)

[Register](#) [Forgot Password](#)

Quick Links







■ Thank you !