

Getting out of BIM Silos

David Fung

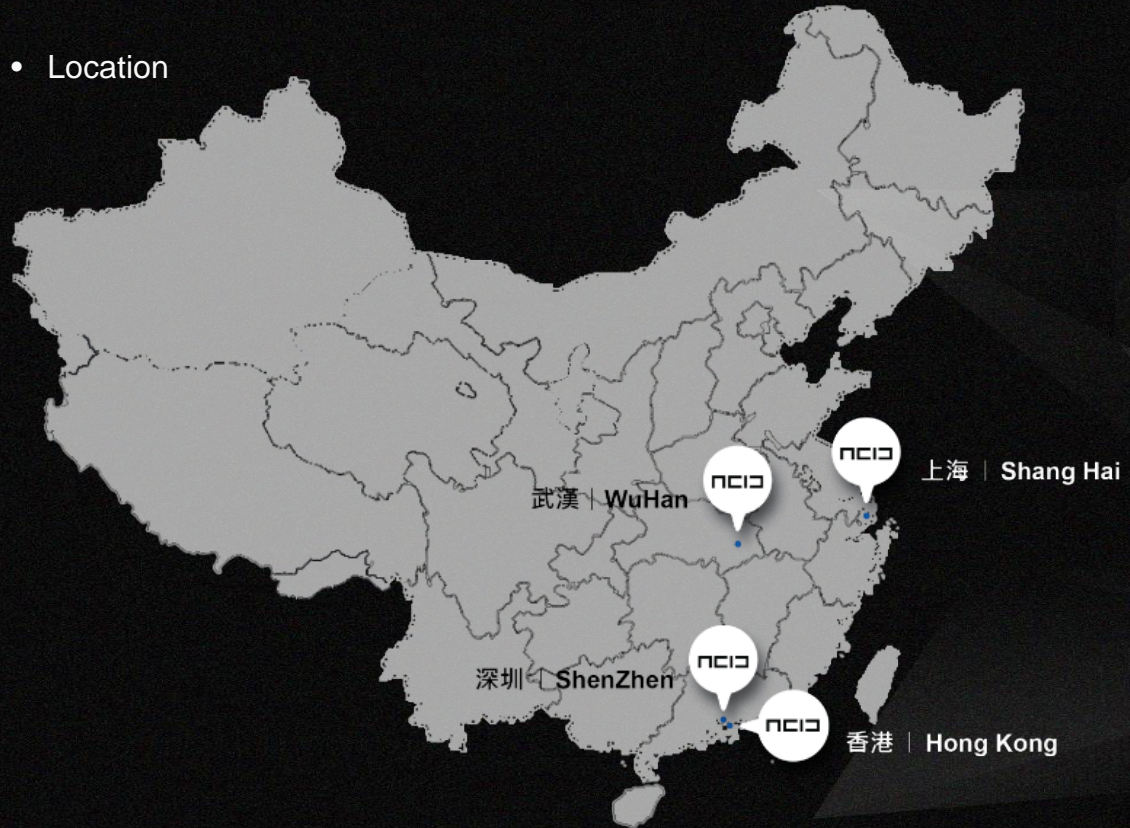
*Registered Architect, HKIA
Managing Director, A.C.I.D.
HKIBIM Chairman
HKUSPACE Department of Architecture, Adjunct Lecturer*



NCID

A DVANCED
C ONSTRUCTION
I NFORMATION
D EVELOPMENT

- Hong Kong, Wuhan, Shanghai and Shenzhen Office
- Over 100 qualified Professional and Technical Staff
- Location



我们是

中华人民共和国住建部
《建筑工程设计信息模型交付标准》参编单位
《建筑工程设计信息模型分类和编码标准》参编单位
《建筑工程设计信息模型出图标准》参编单位

buildingSMART中国分部理事单位

香港建筑信息模拟学会（HKIBIM）发起人及现任会长（David Fung）
香港建筑师学会（HKIA）公司会员(ACID-HK)
中国数字建筑设计专业委员会（DADA）联合发起人
香港房屋署、建筑署BIM技术管理顾问及培训导师团队

行业荣誉

设计获奖/Design Award

- 荣获2013国际绿色建筑设计银奖/Award Silver Medal of International Green Architecture 2013
- 荣获2013欧洲设计年TOP50设计/Award TOP50 Design of 2013 European Design Year
- 荣获2012年公民建筑奖提名
- 荣获2014WA中国建筑奖社会公平奖佳作奖/Excellence Award of 2014 WA Social Equality Award
- 荣获2014WA中国建筑奖设计实验奖入围奖

BIM 获奖/BIM Award

- ACID-HK HIM 项目（BIM技术古建保护应用）荣获：
香港2015buildingSMART大奖
香港BIM大奖 2015
- ACID-HK 为香港BIM Award 2014 赞助机构
- ACID-HK香港董事总经理冯树坚先生：
荣获香港建造業議會2014卓越建築信息模擬獎BIM Excellence Award
被选为香港建筑模拟学会（HKIBIM）会长 2015-16
被选为香港建筑师学会(HKIA)BIM 及IT 小组副会长 2015-16
接受亚洲电视台采访發表對香港BIM 發展的意見及討論



香港建築師學會
The Hong Kong Institute of Architects

This is to certify that

Advanced Construction Information Development Limited

was admitted as a **Corporate Member**
of the Institute on the **Twenty-fifth**
day of **April 2015**

thereby accepting the privileges and responsibility of
membership and undertaking to comply with the Rules of
the Institute.

President

Registrar



The Hong Kong Society of Architects was founded in the
year 1956. It was reconstituted in the year 1972 as the
Hong Kong Institute of Architects.

Date of issue: 29th April 2015

Serial No. CM0200

This Certificate Remains the Property of the Hong Kong Institute of Architects.

B

= Building

建築

I

= Information

資訊

M

= Modelling

模型/ 模擬

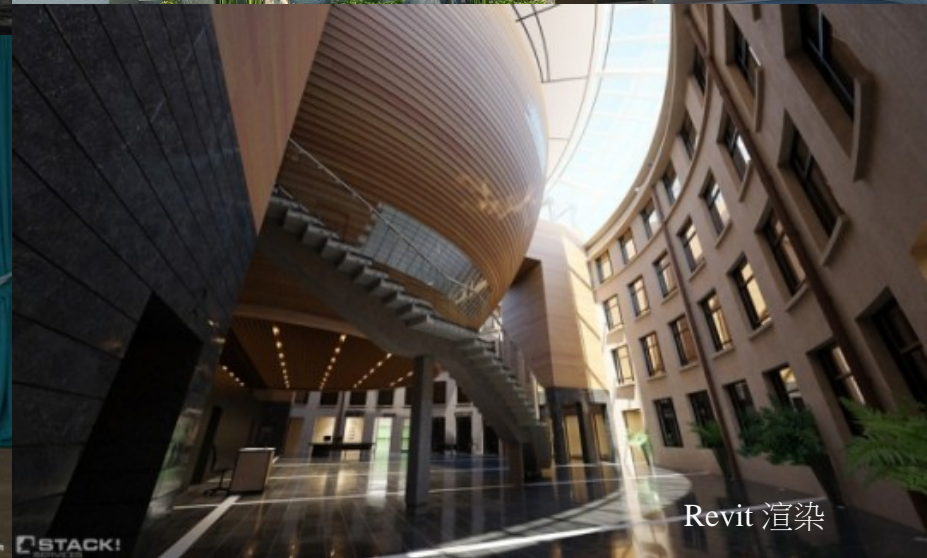
Fake BIM

M + ?

JUST 3D MODEL – NOT BIM



Fake BIM



Fake BIM

- Rendering
- CG (Computer Graphic)
- Animations
- Interactive Gaming

Use BIM tools not
necessarily means BIM!

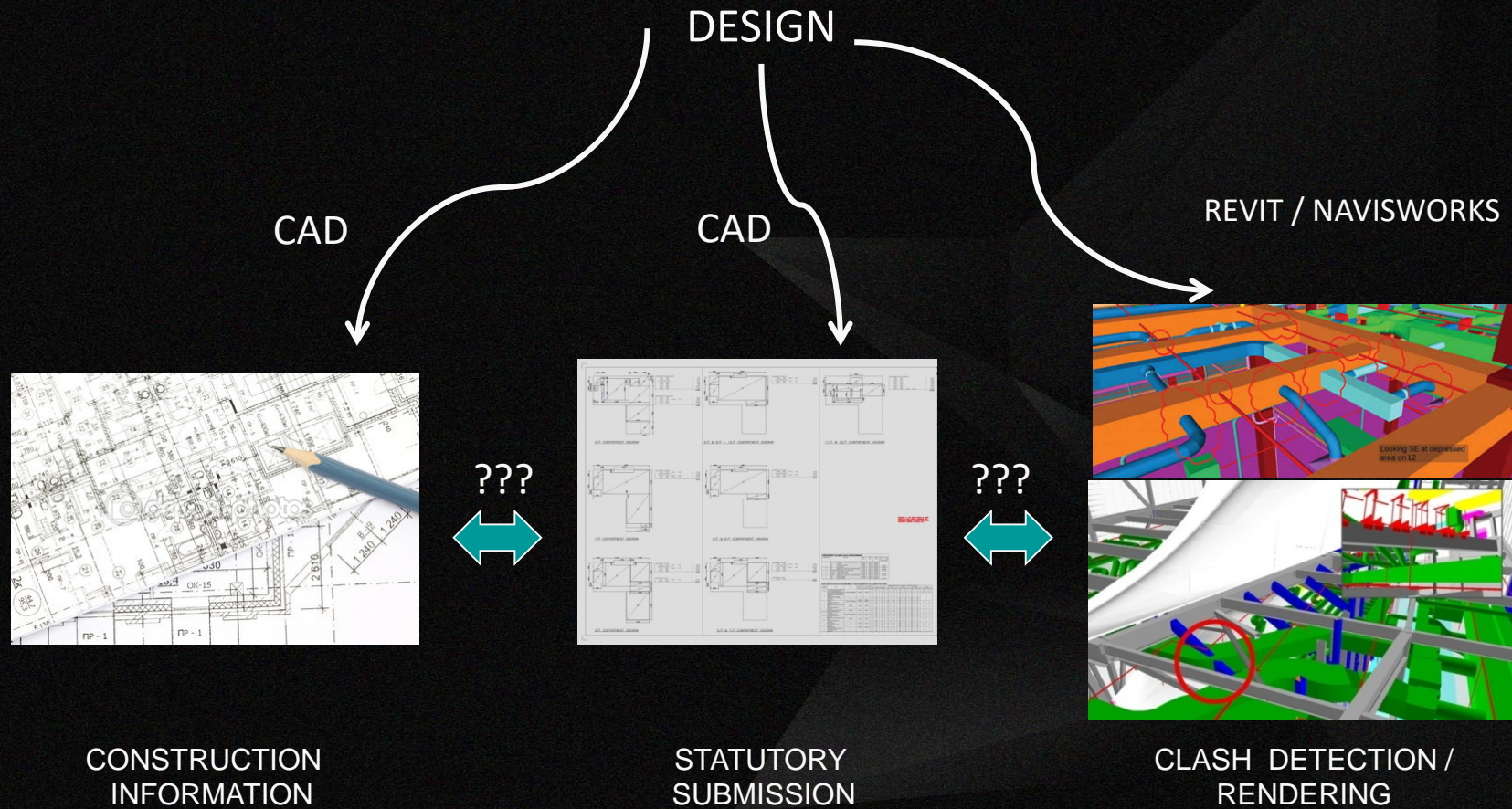


HALF-BIM

I <> M

3D MODEL >> QTO , CLASH ANALYSIS

HALF BIM



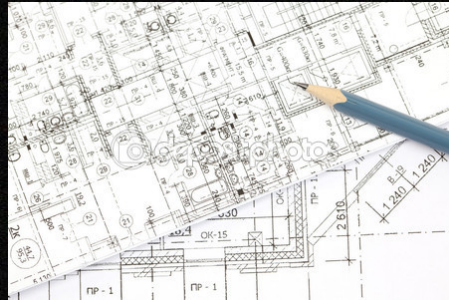
REAL BIM

| = M

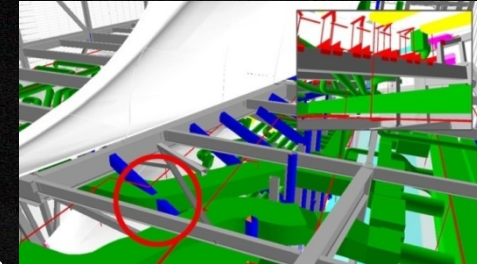
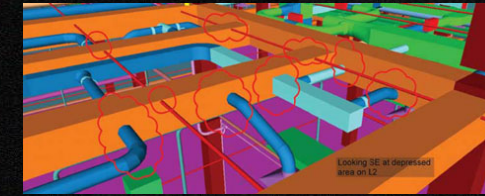
| > M

INFORMATION FROM MODEL,
INFORMATION MORE IMPORTANT

REAL BIM

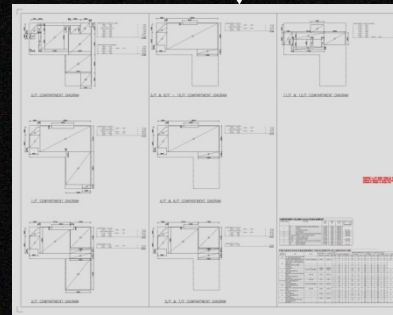


CONSTRUCTION
INFORMATION

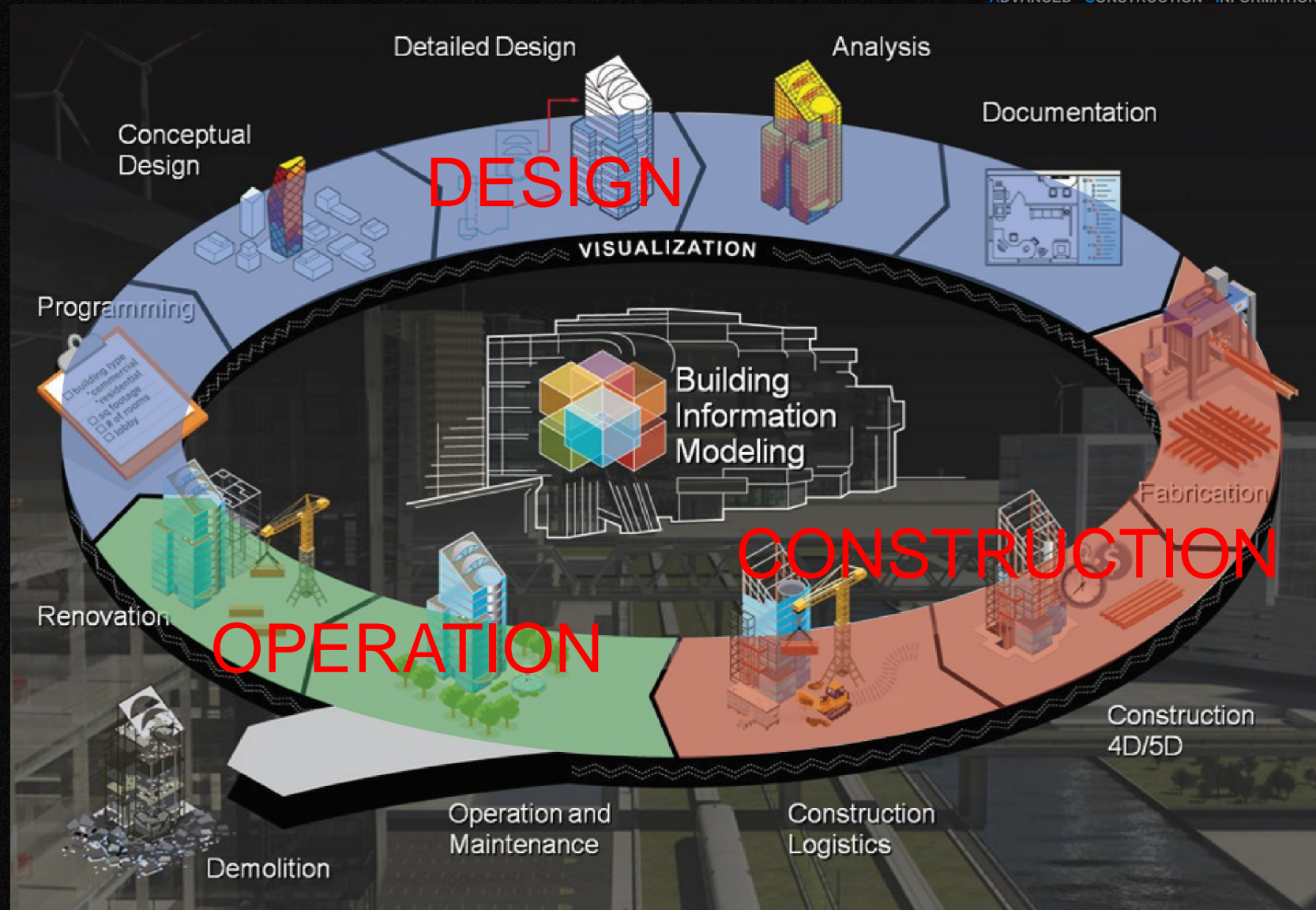


CLASH
DETECTION

DESIGN
in
BIM
Single Source Database



STATUTORY
SUBMISSION



What happen to BIM in:

- Design Adoption
- Construction Connectivity
- Authority Support
- BIM Practice and Standard
- BIM Consultancy
- BIM Procurement

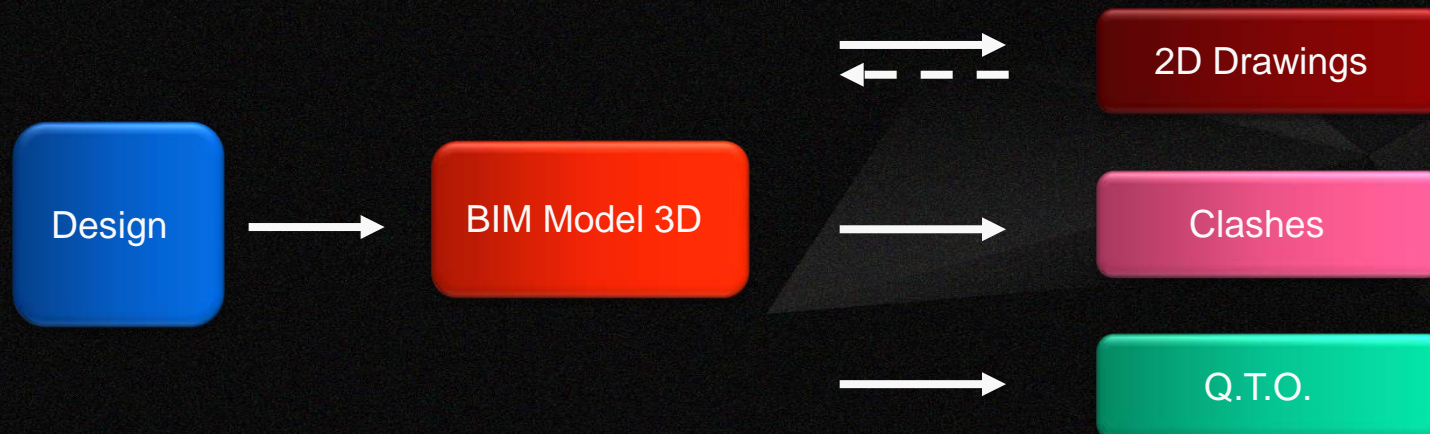
What happen to BIM in:

- Design Adoption
- Construction Connectivity
- Authority Support
- BIM Practice and Standard
- BIM Consultancy
- BIM Procurement

Perceived BIM Workflow



True BIM Workflow :



Tool → Design → Presentation → Product

工具 → 设计 → 表达方式 → 完成品

BIM in a Team



Bible said, "Men do not live on bread alone, but on every word from the mouth of God."

Project directors said, "Projects are not done by individual alone, but by every contribution coming from each of the TEAM members."



TEAMS

1. **In - House Design & Production TEAM**
2. **Project TEAM**
3. **Other Consultant TEAM**



use of passive environmental controls, setting a precedent in Pakistan.

Our London and Manchester offices have collaborated with our specialist Advanced Modelling Group, using Ecotect analysis to interpret the climatic performance.





Professional Designers

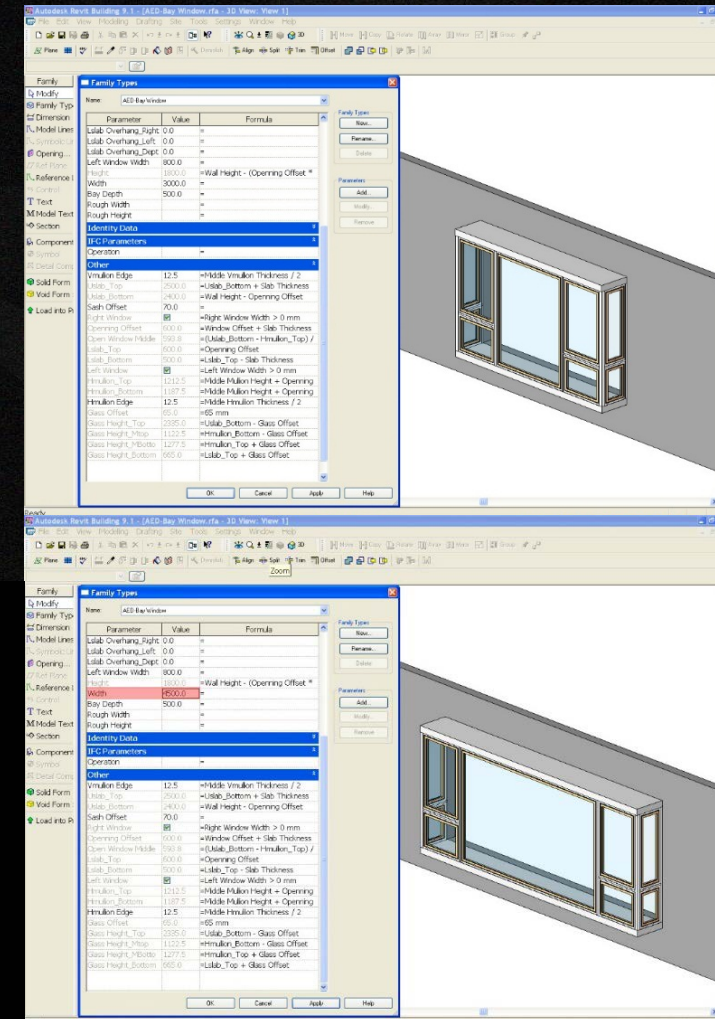
Know what to design professional
Know what to communicate!

Family Man

Champion of System
Parametric Modeling
Mathematical Sense!!!

Technicians

Competent BIM operators



Same Reference System

Same Co-ordinates, same Height

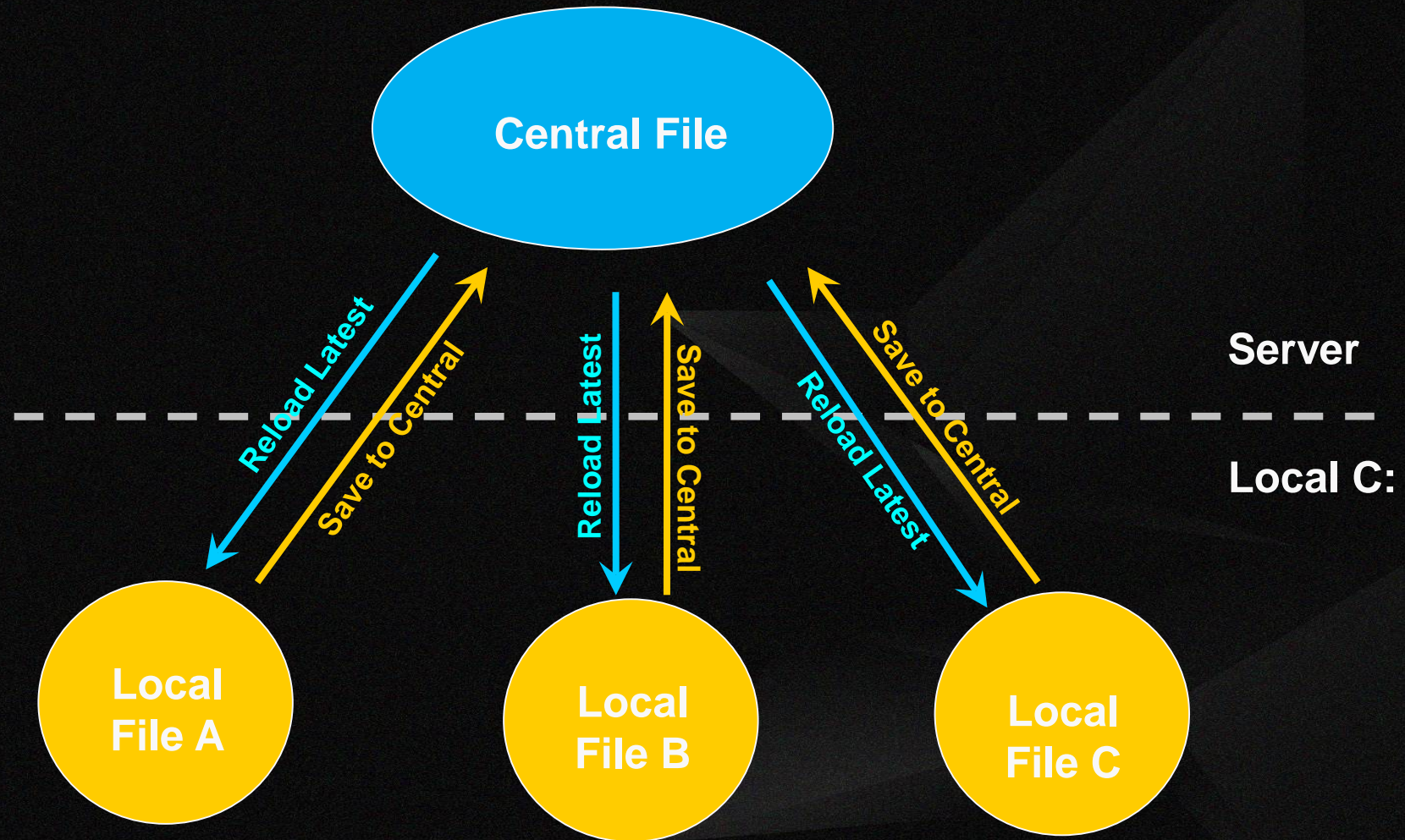
Complex model broken into pieces

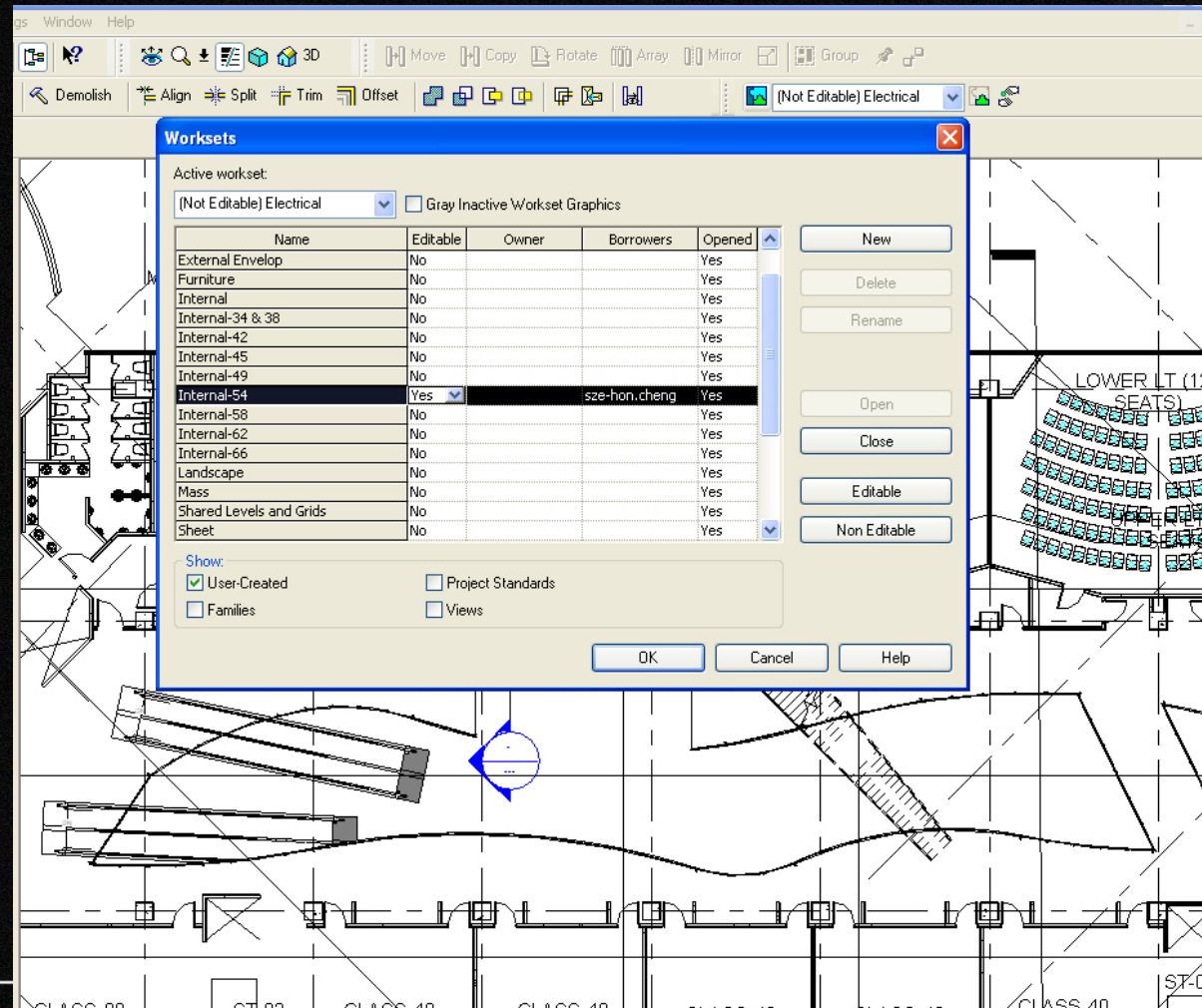
Fast network

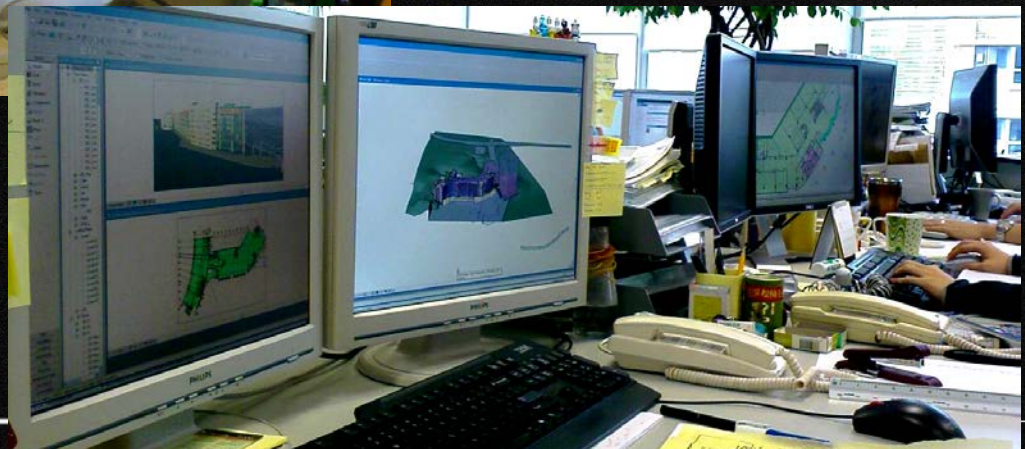
Physical Communication

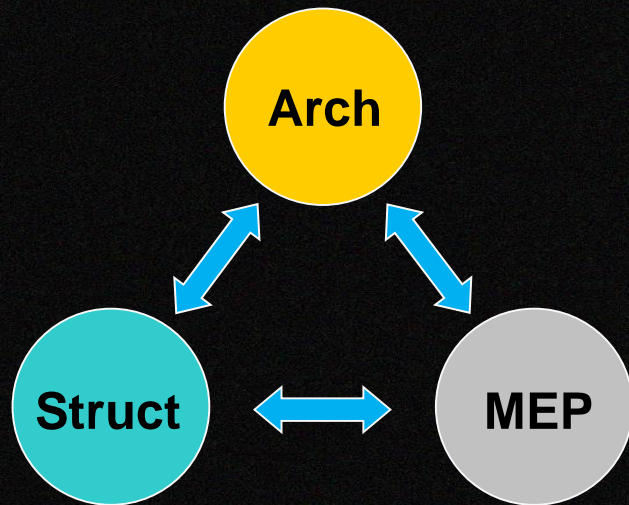
Same BIM Project Standard - naming

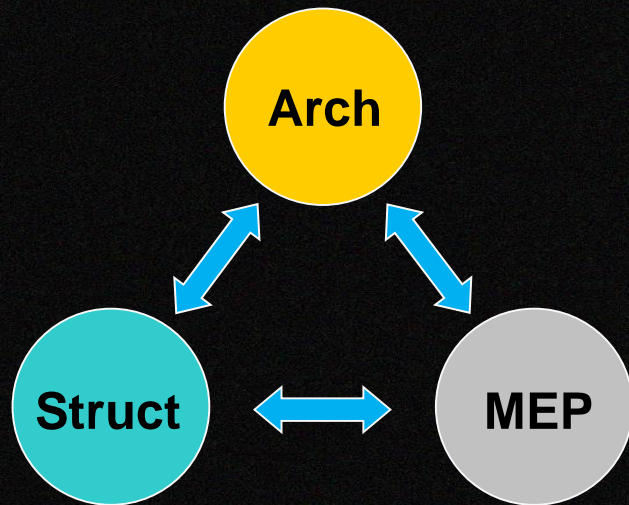






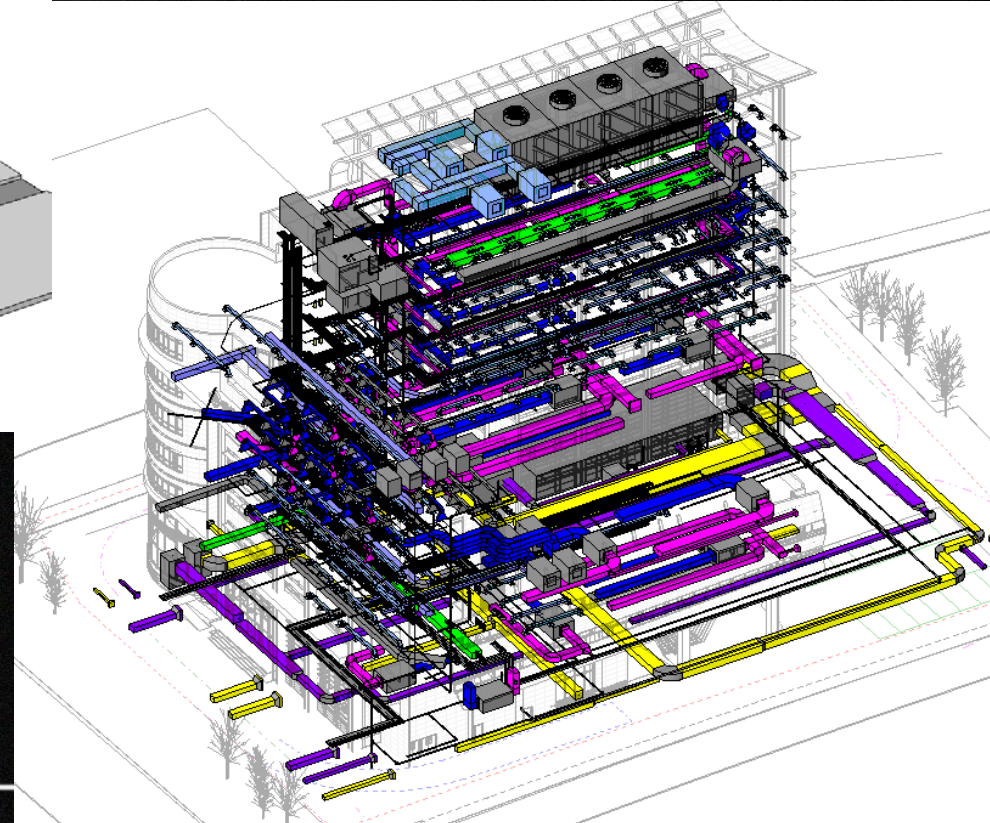
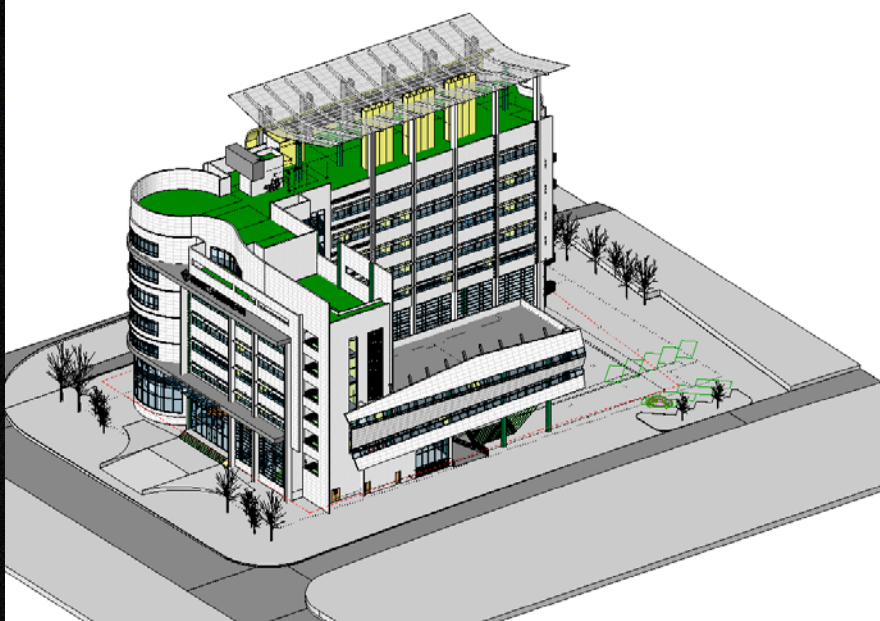




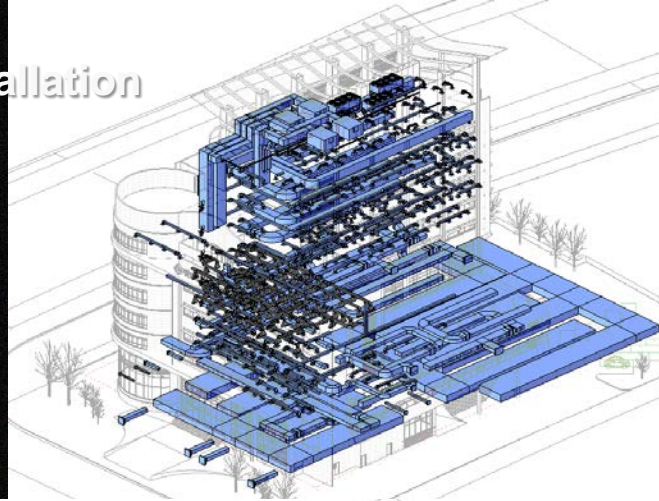


Best Practice:
Second Best:

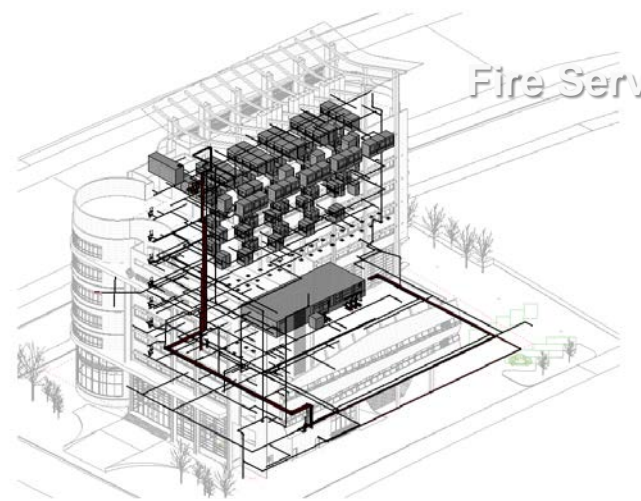
Office with All Disciplines
Efficient Communication



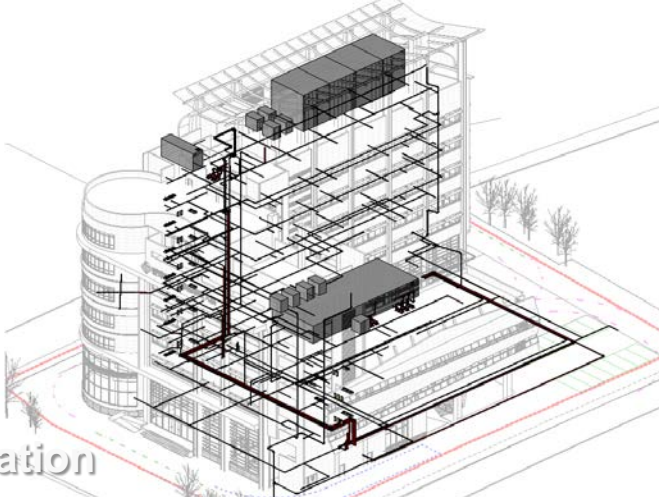
HVAC Installation



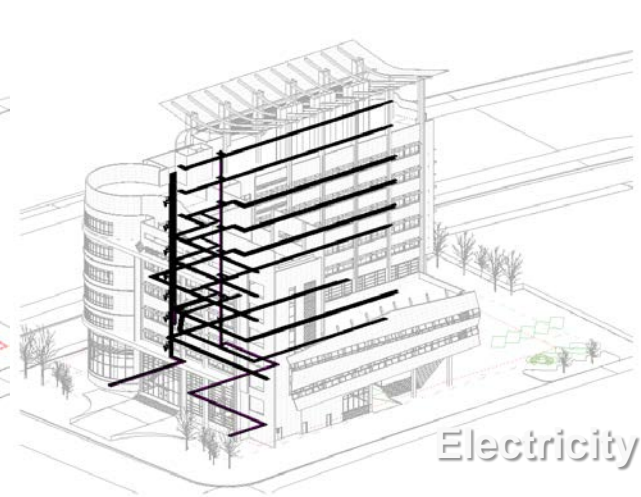
Fire Services Installation

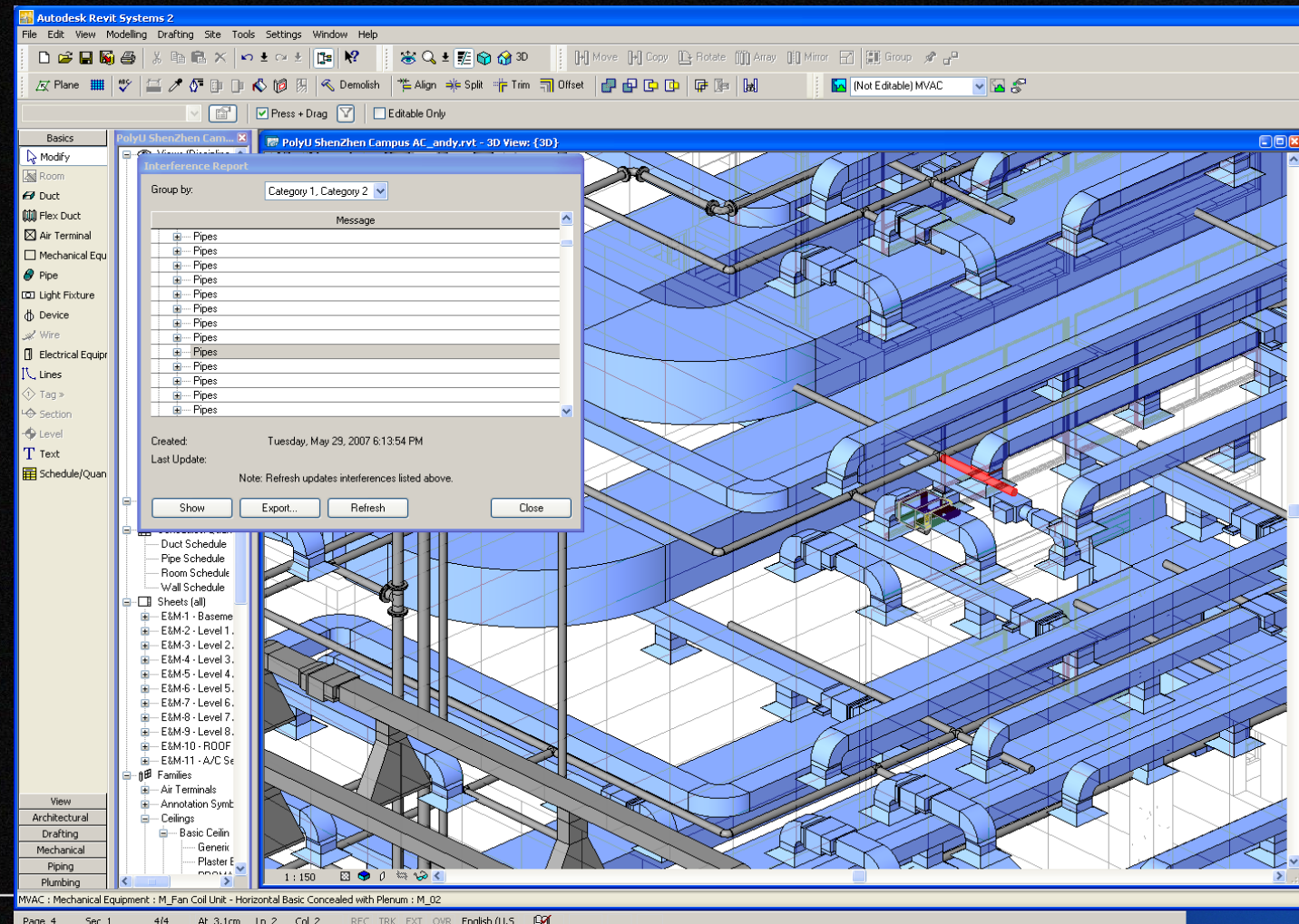


P/D Installation



Electricity Installation







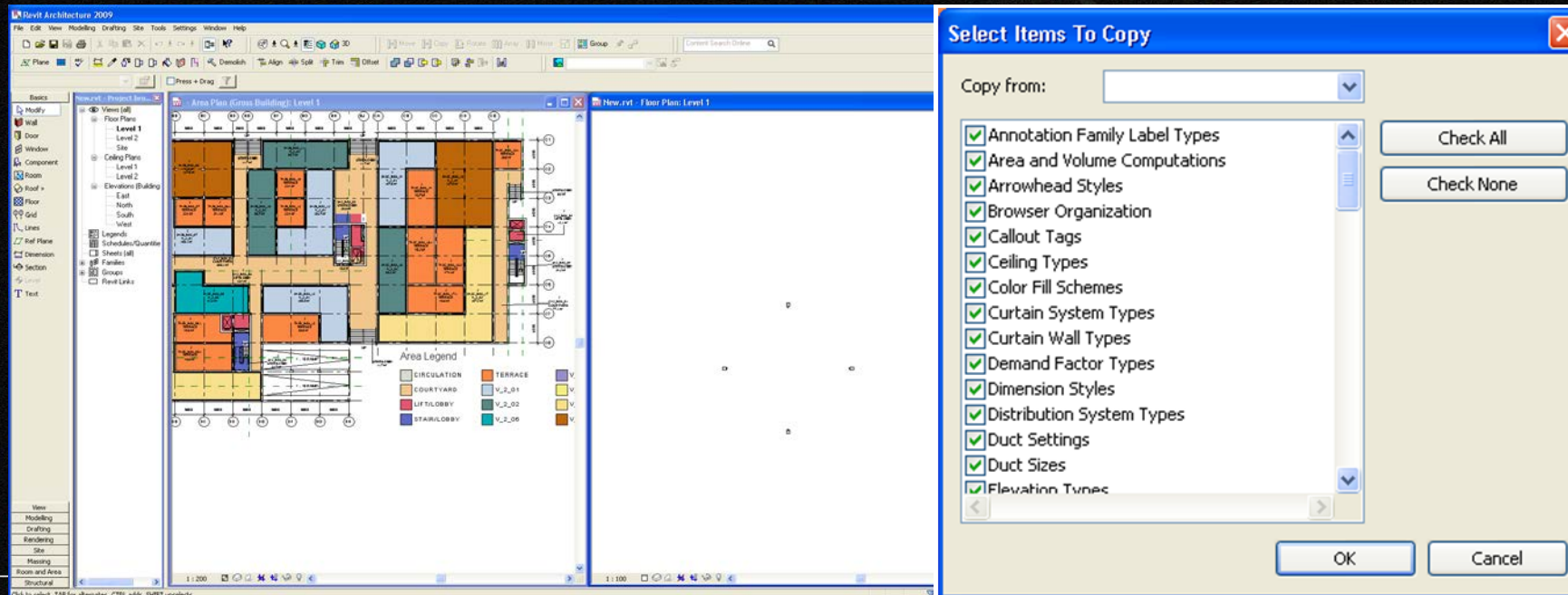
Communication

Email (?) / FTP

Time Lag

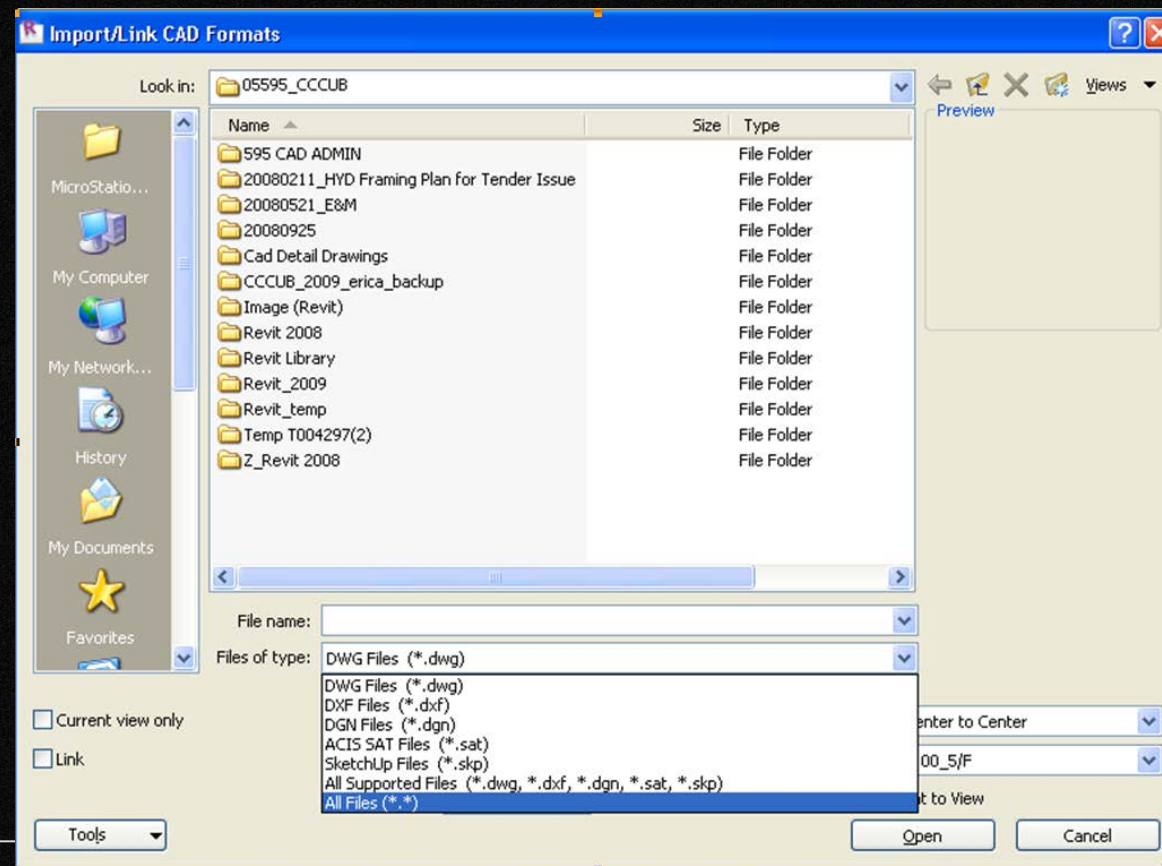
Same Co-ordinate, Height

Different Project Standard



Filing Conversion

Receive information – Rebuild from traditional 2D to 3D presentation



Filing Conversion

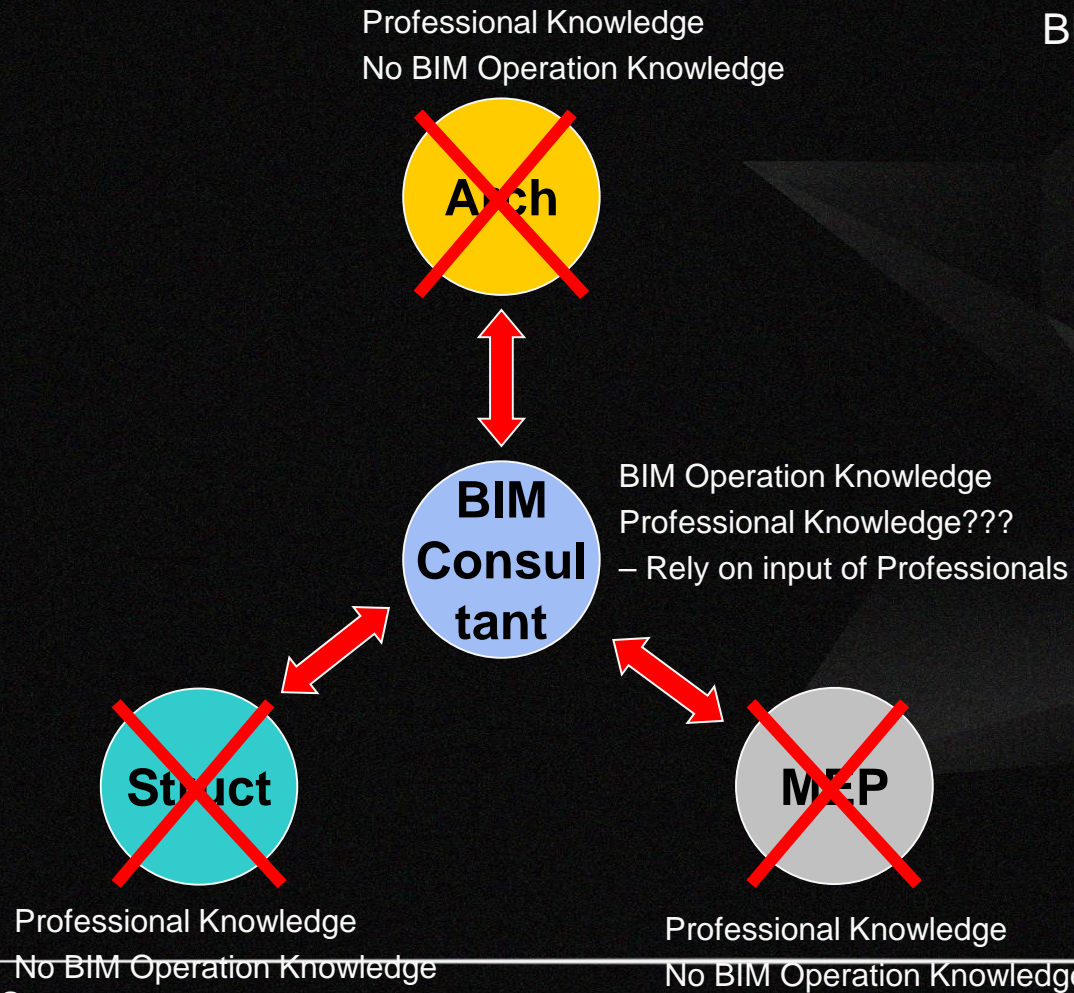
Release Information – Convert back to other 2D information, lost of information, CAD standard

Export Layers: C:\Program Files (x86)\Revit Architecture 2009\Data\exportlayers-dwg-AIA.txt

Category	Projection		Cut	
	Layer name	Color ID	Layer name	Color ID
Cut Pattern	A-WALL-PATT	2	A-WALL-PATT	2
Finish 1 [4]	{ A-WALL-MBNT }	2	{ A-WALL }	2
Finish 2 [5]	{ A-WALL-MBNT }	2	{ A-WALL }	2
Hidden Lines	A-WALL-HIDN	2	A-WALL-HIDN	2
Membrane Layer	{ A-WALL-MBNT }	2	{ A-WALL }	2
Structure [1]	{ A-WALL-MBNT }	2	{ A-WALL }	2
Substrate [2]	{ A-WALL-MBNT }	2	{ A-WALL }	2
Surface Pattern	A-WALL-PATT	2	A-WALL-PATT	2
Thermal/Air Layer [{ A-WALL-MBNT }	2	{ A-WALL }	2
Wall Sweep - Corni	{ A-WALL-MBNT }	2	{ A-WALL }	2
Wall Sweeps	{ A-WALL-MBNT }	2	{ A-WALL }	2
Walls/Interior	I-WALL	2	I-WALL	2
Walls/Exterior	A-WALL	2	A-WALL	2
Walls/Foundation	S-FNDN	2	S-FNDN	2
Walls/Retaining	SITE-WALL	2	SITE-WALL	2
Window Tags	A-GLAZ-IDEN	6		
Windows	A-GLAZ	6	A-GLAZ	6
Architrave	{ A-GLAZ }	6	{ A-GLAZ }	6
Cavity Closer	{ A-GLAZ }	6	{ A-GLAZ }	6
Elevation Swing	{ A-GLAZ }	6	{ A-GLAZ }	6
Flashings	{ A-GLAZ }	6	{ A-GLAZ }	6
Frame-Sash	{ A-GLAZ }	6	{ A-GLAZ }	6
Frame/Mullion	A-GLAZ-FRAM	6	A-GLAZ-FRAM	6
Glass	A-GLAZ-GLAS	6	A-GLAZ-GLAS	6
Hidden Lines	{ A-GLAZ }	6	{ A-GLAZ }	6
Jamb Liner	{ A-GLAZ }	6	{ A-GLAZ }	6

Load... Standard... Save As...

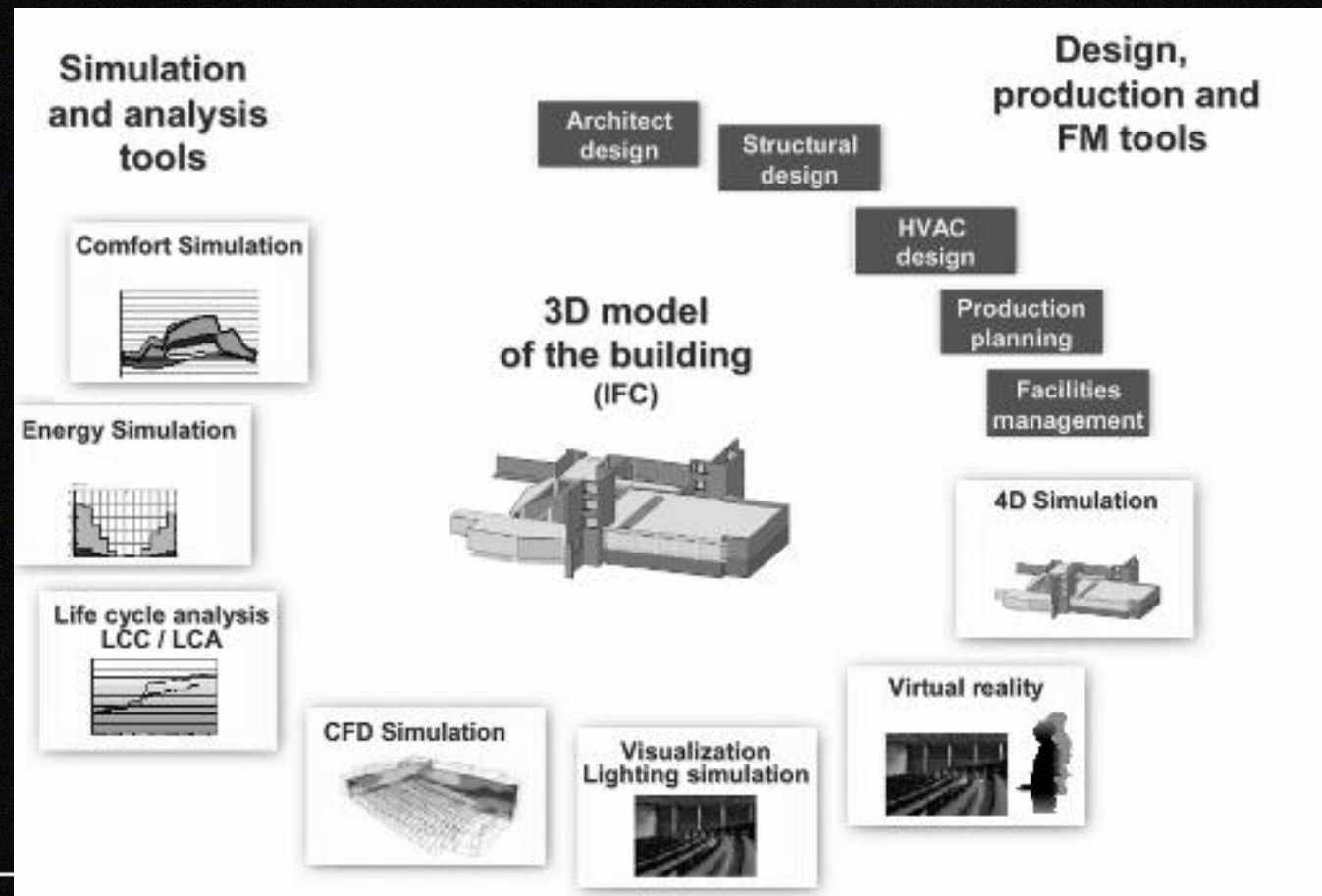
OK Cancel Help

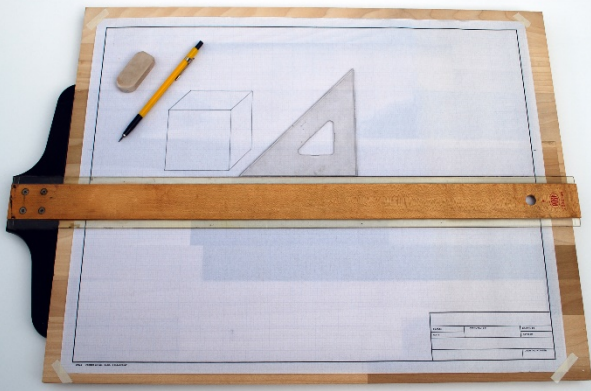


BIM Consultant

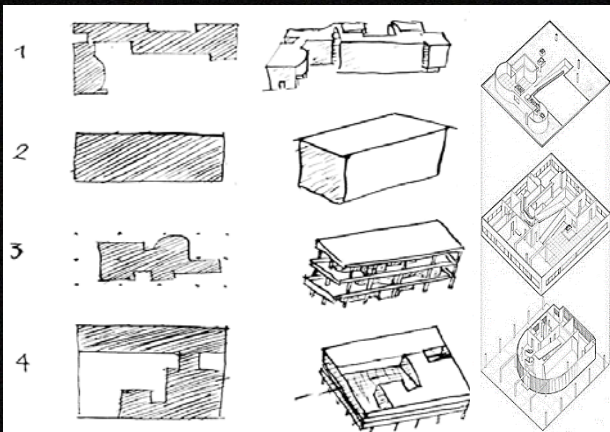
- Roles
- Professional Liability?
- Responsibility
- Training
- Knowledge Transfer

QS, Environmental Consultants Specialist...

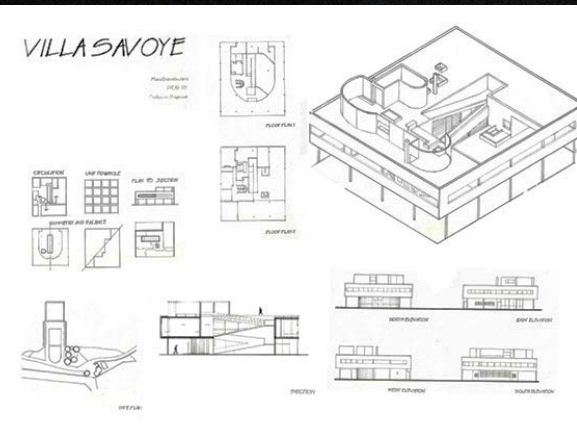




Tools
工具



Design
设计



Presentation
表达方式



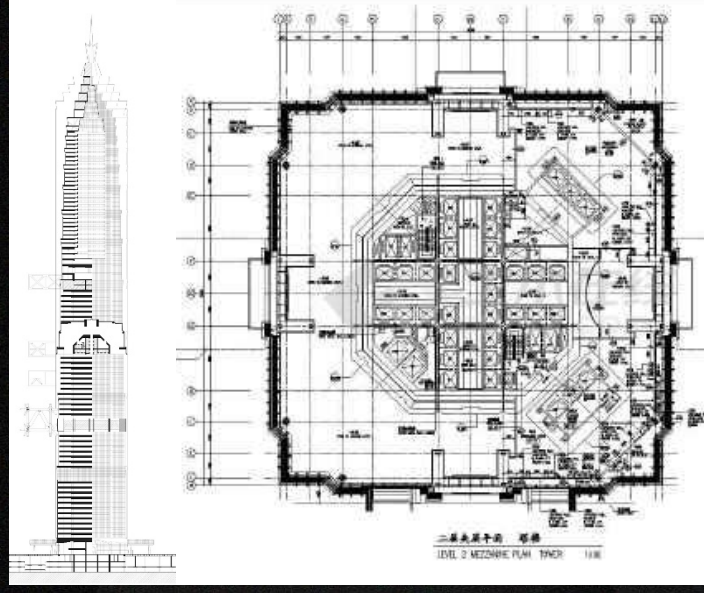
Product
完成品



Tools
工具



Design
设计



Presentation
表达方式

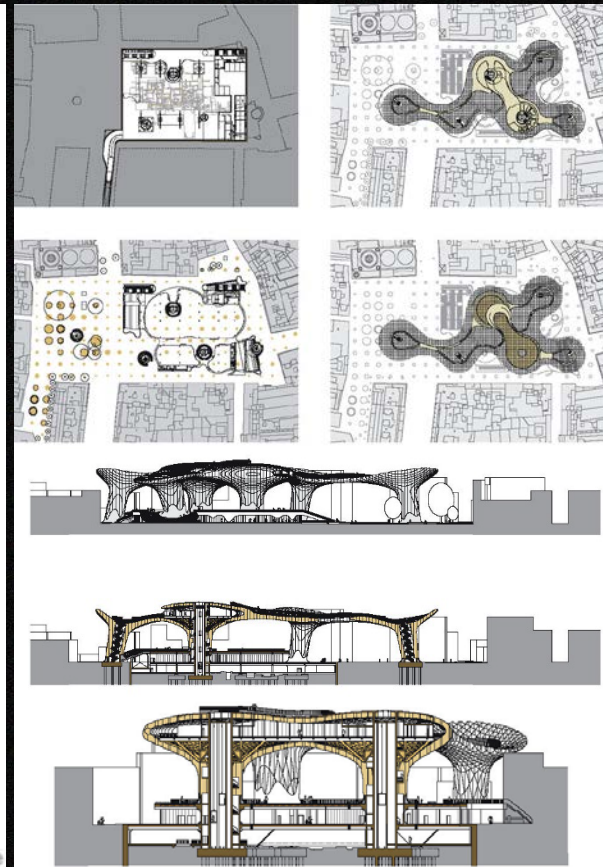
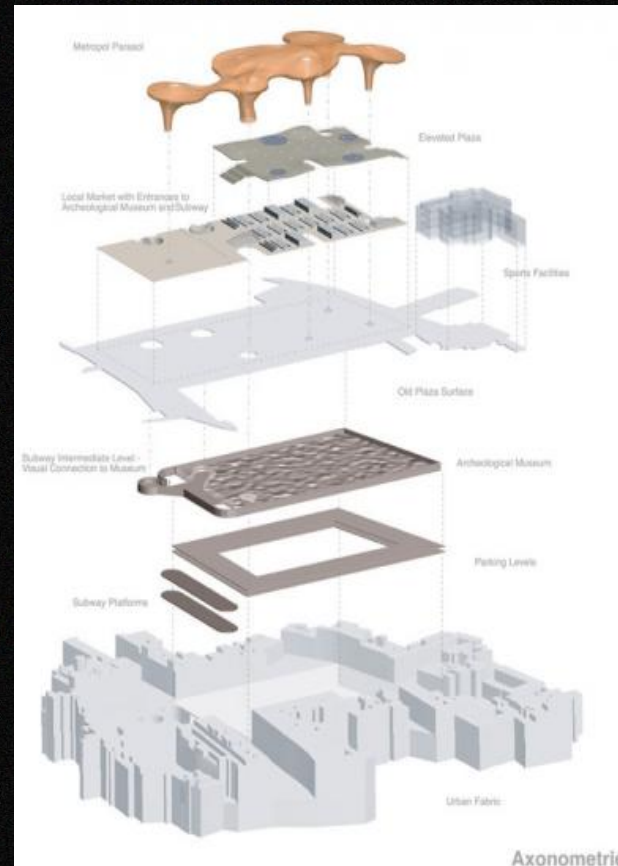


Product
完成品

Rhino



NURBS modeling for Windows



Tools
工具

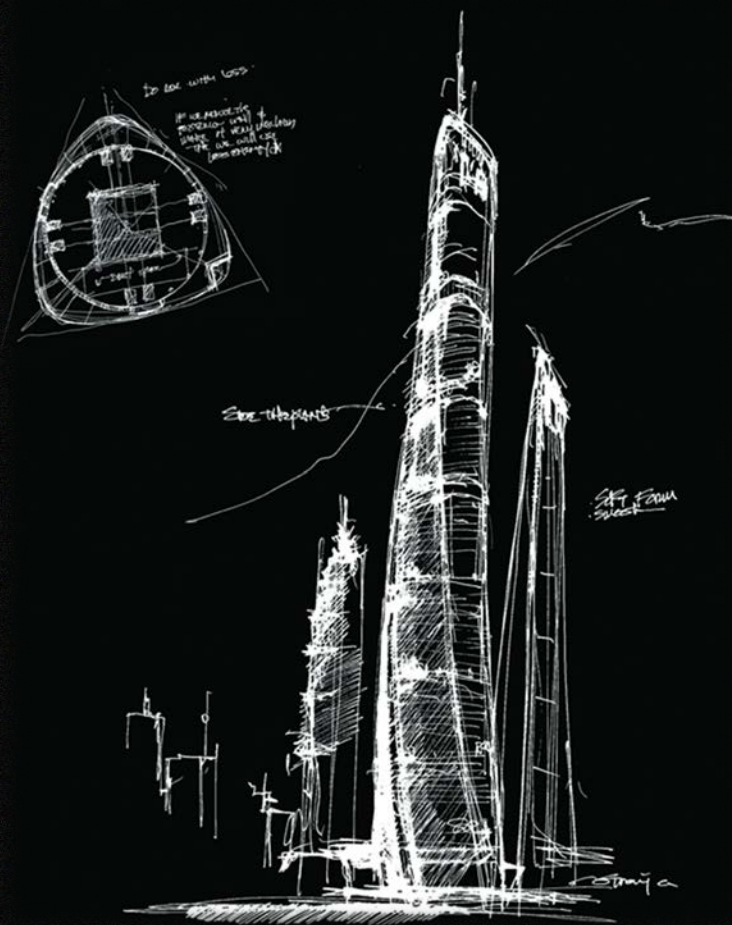
Design
设计

Presentation
表达方式

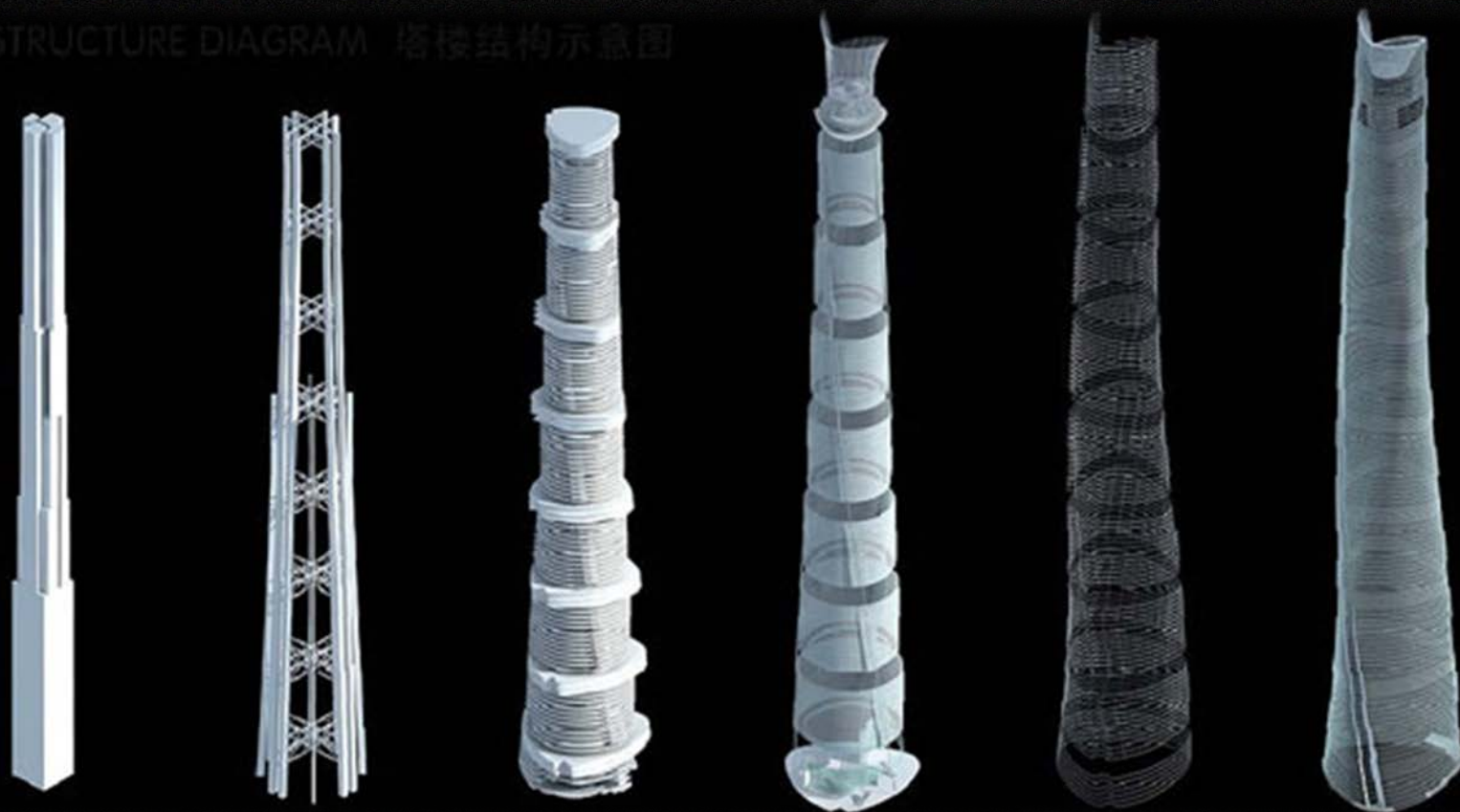
Product
完成品

Building 建筑 Information 信息 Modeling 模拟





STRUCTURE DIAGRAM 塔楼结构示意图



表达方式

