

Autodesk Industry Advisory Board AIAB

www.aiab.org

David Fung Immediate Past Chairman 2009-2010

Members



AIAB Mission

- Informal and non-profit making interest group
- Promote awareness of using design technology
- Enhance partnership between different segments in the industry
- Express and share opinions and views technology development
- Advisory role to Autodesk

Committee

14 Committee members

Chairman

Vice Chairman

Secretary

Committee from different professional background

- Architecture

- Engineering

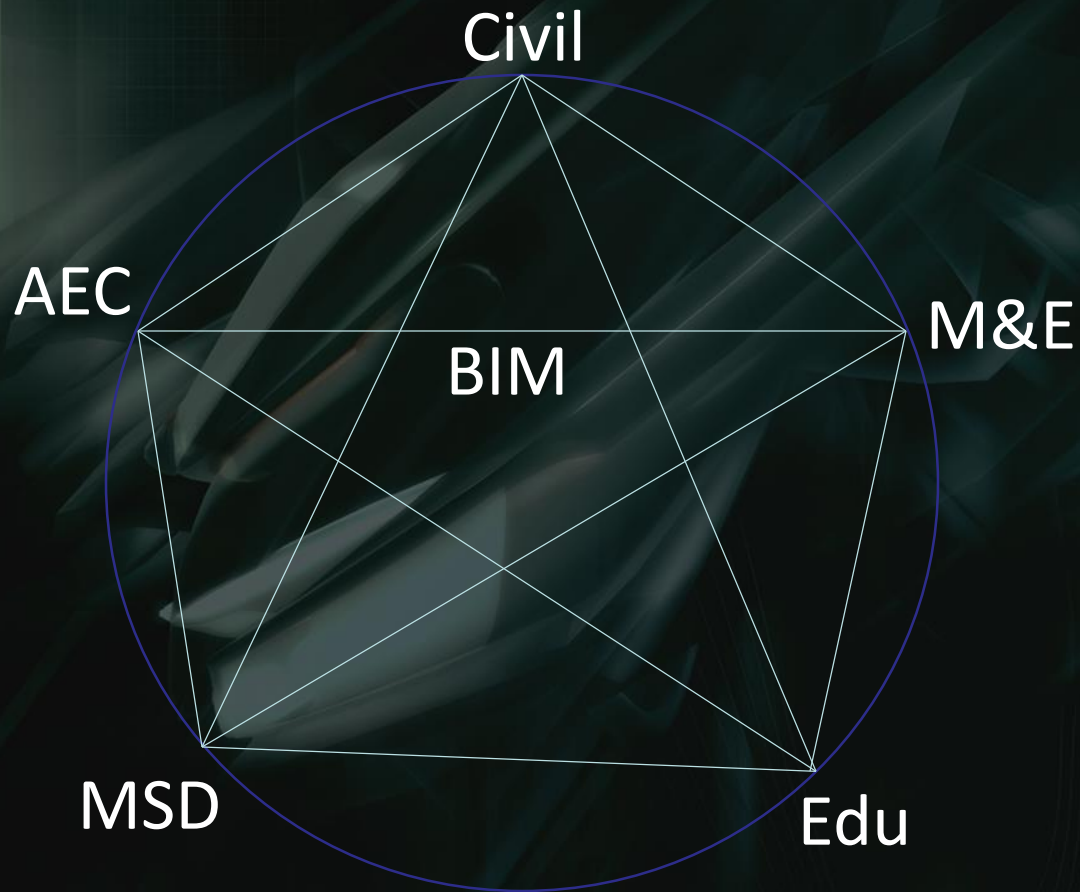
- Civil and Geotechnical

- Education

- Media and Entertainment

- Software developer

Expend our partnership



BIM Conferences



2005



2007



2009



2006



2008



2010

HK BIM Awards

AECOM

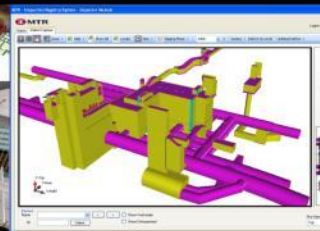
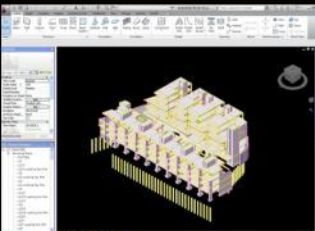
恒基兆業地產有限公司
HENDERSON LAND DEVELOPMENT COMPANY LIMITED

HOK

Hong Kong Housing Authority

MTR

瑞安建築有限公司
SHUI ON CONSTRUCTION COMPANY LIMITED



AECOM

Projects:

- Proposed Commercial Development at No. 123-124, Hoi Bun Road
- Proposed Residential Development at 55-57 Briny Road, Pokfulam

Location:

- Kwai Tong
- Pokfulam

Types:

- Commercial Development
- Residential Redevelopment

Scheduled Time of Completion:

- Hoi Bun Road - March 2013
- Briny Road - September 2013

"The concept took around two months to develop, compared to perhaps three to six months with the traditional approach," says Ir. Alan Yuen, Principal Engineer, Building Engineering (Structural), AECOM. "And we completed the structural design in under two months - when we would usually expect this to take three to four months for a building like this."

Henderson Land Development Co Ltd.

Projects:

- The Gloucester
- A Luxurious Boutique Hotel at 188 jaffe Road

Location:

- 188 Gloucester Road, Wanchai
- 188 jaffe Road, Wanchai

Types:

- Residential Development
- Hotel

Scheduled Time of Completion:

- 2012

"BIM is a catalyst for project innovation and a tool for speedier design development," says Kevin Ng, Deputy General Manager, Project Management (2) Department, Henderson Land. "We couldn't effectively and efficiently visualize 2D combined services drawings, for complicated projects, but with BIM we can realistically appraise problems and opportunities."

HOK International (Asia/Pacific) Ltd.

Project: Bengaluru International Airport Terminal Expansion

Location: Bangalore, India

Type: Airport

Scheduled Time of Completion: 2013 & 2015

"The client can get a better understanding of the design via Revit's inherent 3D environment, and therefore become more engaged with the design process," says Mr. Benjamin Thomas, Senior Design Architect, Associate with HOK.

"The BIM model was a massive help in the design process," says Ir. Andrew Mole, Associate Director of Arup. "There is only so much information you can show in 2D drawings, since they must be interpreted to understand the full spatial information. 3D models communicate better. The BIM model allowed creation of multiple views of the airport design, with minimum additional effort."

Hong Kong Housing Authority

Projects:

- Tai Pak Tin Street Public Housing Development
- Redevelopment of Lower Ngau Tau Kok Estate
- Redevelopment of So Uk Estate

Location:

- Tai Pak Tin Street
- Lower Ngau Tau Kok Estate
- So Uk Estate

Type:

- Public Housing

Having worked on projects with BIM used in standard ways - such as reducing clashes during construction, Hong Kong Housing Authority has recently progressed to helping accelerate a construction project in Tai Pak Tin Street, and even demolished old buildings using BIM in Lower Ngau Tau Kok and So Uk.

MTR Corporation Limited

Project: Re-Development of Inspection Registry System

Location: Hong Kong

Type: System Development

Scheduled Time of Completion: 2011

"Our BIM model is for all, so inspectors can work efficiently," notes Mr. Dorian Leung, Structural Inspection and Investigation Manager, MTR Corporation.

"I think BIM will become more popular in the long term," says Mr. Dickson Luk, System Analyst, MTR Corporation. "Now, it is mainly used by BIM professionals. In future, inspectors, engineers and managers will gain more and more access to BIM models - which will enhance our expertise in managing the Corporation's railway assets."

Shui On Construction Co. Ltd.

Project: The Innovation Tower, The School of Design

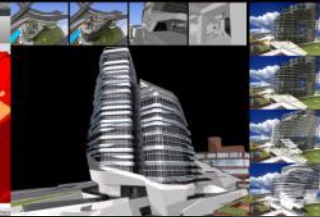
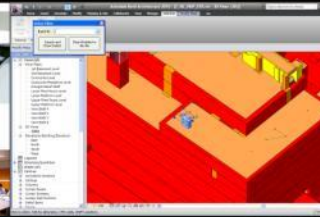
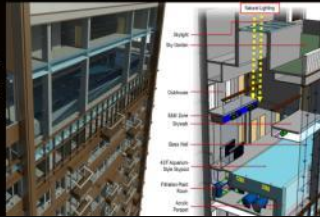
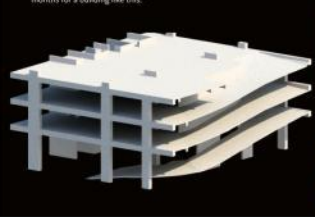
Location: The Hong Kong Polytechnic University, Hung Hom

Type: Academic Building

Scheduled Time of Completion: 2012

With BIM, correlations between various disciplines would be far clearer than with 2D drawings and sections, and Shui On could construct Innovation Tower as envisaged by the architect.

Mr. Chan Tsang Shing, Senior Engineer of Shui On Construction Co. Ltd, says Shui On is now training staff to use BIM, and they find that Revit helps them easily visualize construction projects in 3D. "Most colleagues find it very useful, and know there's a trend to use BIM," he adds.



AIAB BIM Virtual Project

- AIAB members to be the advisers, provide initial training to the participants
- A School project in ShanXi as the training base project
- To test out the software usage and learn the BIM workflow between different disciplines



Singapore BCA visit to HK



SINGAPORE BIM ROADMAP

Hong Kong Study Trip

15-18 August 2011

TARGET



**Singapore Construction
Industry to Use BIM
Widely by 2015**

PHASED MANDATORY BIM E-SUBMISSION

2013

Mandatory Architecture BIM e-Submissions for all new building projects > 20,000 m²

2014

Mandatory Engineering BIM e-Submissions for all new building projects > 20,000 m²

2015

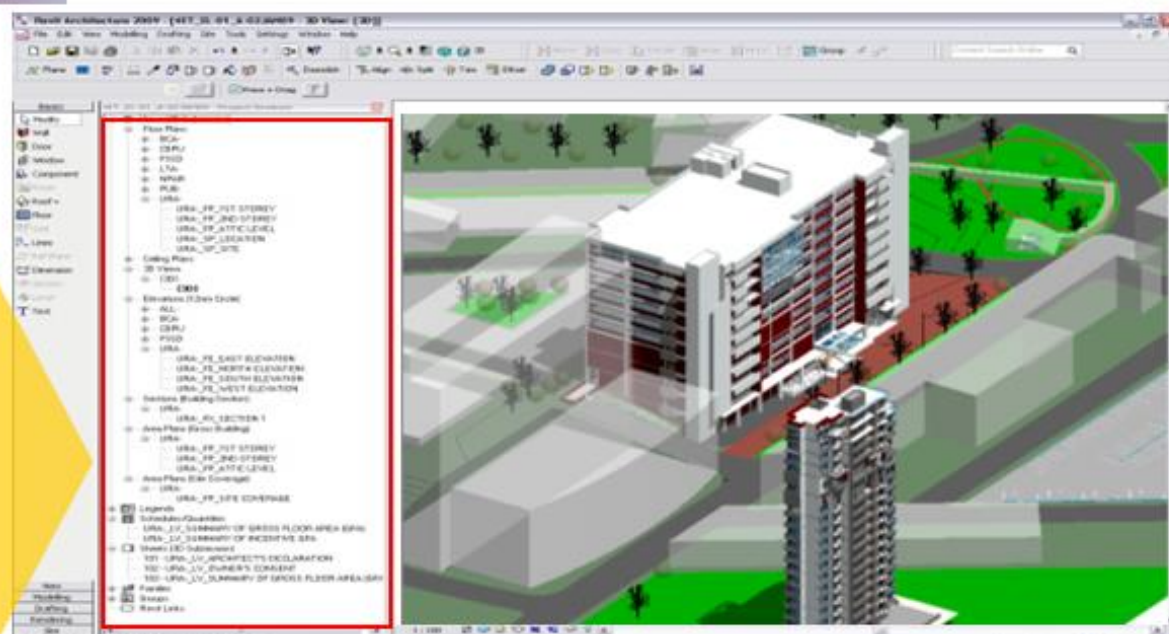
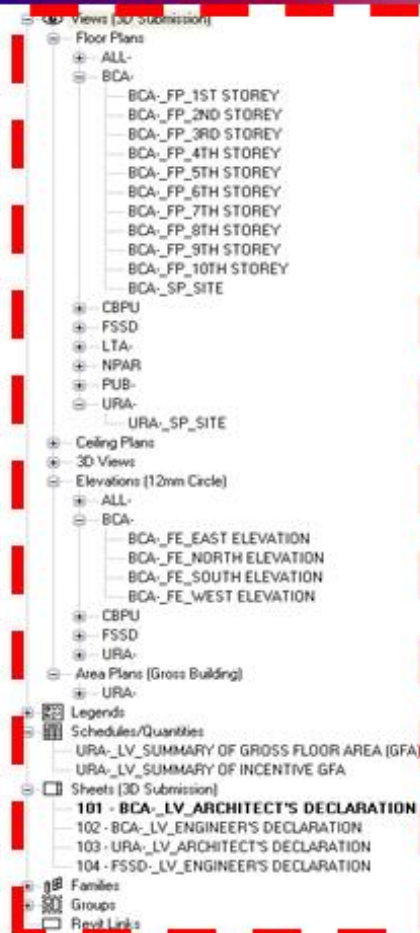
Mandatory Architecture & Engineering BIM e-Submissions for all new building projects > 5,000 m²

**** will be calibrated in a gradual manner by taking into consideration the readiness of the industry practitioners and technology**

BIM STEERING COMMITTEE

- To provide strategic direction and guidance on the **development of local BIM standards** and supporting resources
- To seek appropriate funding support for development of these standards and supporting resources
- To oversee implementation of these standards and address any issue that may impede the adoption of BIM
- To advise on any area that would lead to more effective BIM implementation in the industry

SUBMISSION TEMPLATE & GUIDELINES



BIM e-Submission Guideline

Training Guide

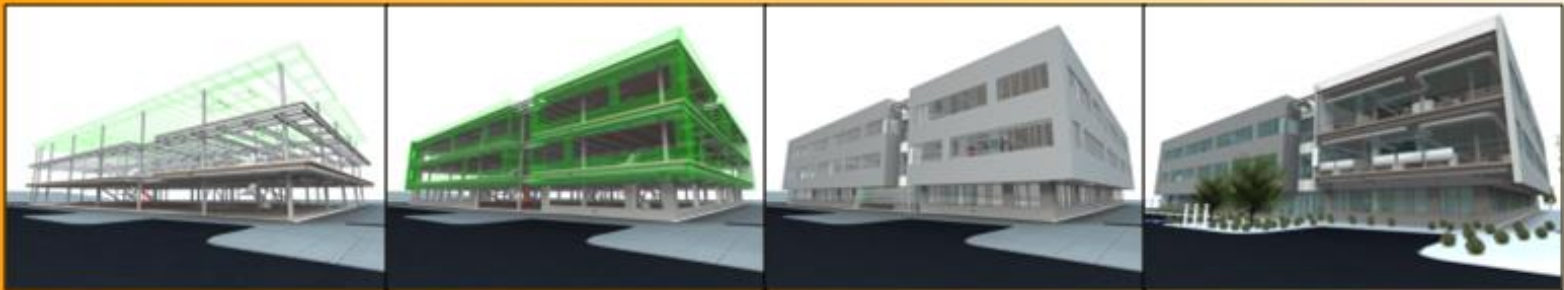
Handbook

Building Information Model (BIM) Fund

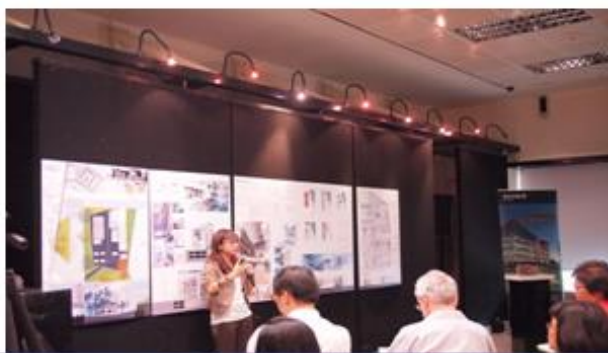
Firm Level Scheme

**Project Collaboration &
Coordination Scheme**

Help defray cost of software, hardware, training & consultancy



BUILDING CAPABILITY & CAPACITY



Competition



Expert Programs



Handholding



Training



Skills Certification



Graduation Workshop



“十二五”建筑业信息化发展纲要

（一）总体目标

“十二五”期间，基本实现建筑企业信息系统的普及应用，加快建筑信息模型（**BIM**）、基于网络的协同工作等新技术在工程中的应用，推动信息化标准建设，促进具有自主知识产权软件的产业化，形成一批信息技术应用达到国际先进水平的建筑企业。

住房和城乡建设部 10/5/2011

<http://www.c-bm.com/news/2011/5-19/B16543600.shtml>

Welcome to the AIAB BIM Conference

Annual conference for
the whole industry

- 6 years of history
- Over 50 speeches
- Over 1000 audience

Time	Topics
9:00am - 9:30am	Registration
9:30am - 9:35am	Welcome Speech <i>Ir. David Yau, BSc(Hons), MSc, CEng, FICE, FHKIM, MHKIBIM, MHKIE, RPE, BEAM Pro</i> <i>Chairman, Autodesk Industry Advisory Board</i>
9:35am - 9:50am	Keynote Speech - Beyond BIM* <i>Mr. Phillip G. Bernstein, FAIA, RIBA, LEED AP</i> <i>Vice President, Industry Strategy and Relations, AEC Solutions, Autodesk, Inc</i>
9:50am - 10:20am	Green BIM <i>Ir. Francis Leung, BSc(Eng), CEng RPE, RSE-HK IRSE-PRC MHKIE, MStructE, MHKIBIM</i> <i>Director @ Head of BIM, WSP Hong Kong Ltd</i>
10:20am - 10:50am	BIM - GIS Integration <i>- Ir. Sammy Ng</i> <i>Technical Director, AECOM</i> <i>- Mr. Eric Yau</i> <i>GIS Manager, AECOM</i>
10:50am - 11:05am	Coffee Break
11:05am - 11:35am	BIM on Track <i>Ir. Leung Wai-kit, MITM, MSc(Eng), CEng, MICE, MHKIE, MIEAust, MHKIBIM</i> <i>Director, URS/Scott Wilson</i>
11:35am - 12:05pm	Business Requirements From Building Information Modeling (BIM) to Facility Information Modeling (FIM) <i>Mr. Calvin Wong</i> <i>Chief Executive Officer, Tecton Ltd</i>
12:05pm - 2:00pm	Lunch Break (Lunch provided)
2:00pm - 2:30pm	Total Building Lifecycle Management - the core value of BIM for HK Building Industry <i>Mr. Elvis Li</i> <i>Chief Executive Officer, isBIM Ltd</i>
2:30pm - 3:00pm	BIM for Urban Design* <i>Ms. Han Hsi Ho</i> <i>Associate, The HOK Planning Group</i>
3:00pm - 3:30pm	Government Initiative and BIM R&D in UK <i>Dr. Llewellyn C.M. Tang</i> <i>Chairman (Student Section), The Hong Kong Institution of Engineers, UK Chapter</i> <i>Lecturer in Construction Management, University of Reading</i>
3:30pm - 3:45pm	Coffee Break
3:45pm - 4:15pm	Adoption of BIM in Inspection Registry System Redevelopment <i>Mr. Dickson Luk</i> <i>System Analyst, MTR Corporation Ltd</i>
4:15pm - 4:45pm	Experience Sharing on AIAB Virtual Project <i>The 1st interactive training class conducted by AIAB for multi-disciplines collaboration</i>
4:45pm - 4:50pm	Closing Remarks <i>Ms. Wendy Lee, DBA Candidate, MBA, MBCS, MHKCS, MHKIBIM, MiProA</i> <i>Branch Manager, HK @ Macau/ Senior Manager, Business Development - Designed in, AEC China, Autodesk</i>
4:50pm - 5:00pm	Q&A and End of Event

Autodesk®

BEYOND BIM

AIAB BIM Conference 2011

Questionnaire