



# Parametric Modelling

## - An Design Approach in Architecture

**David Fung** Senior Associate, Aedas Ltd; HKIA; AIAB; HKIBIM



# Parametric Modelling

- Use parameters to drive the model
- Relates related to the approach taken in the **design process** than the software tools an architect uses.
- Creating and modifying these relationships is an important part of the design process. A parametric model is often defined by rules and constraints. Changing a rule or constraint, or modifying a part of the model itself, often has implications in the entire model.
- Why Changes? - **Responses** to environmental conditions such as sun and shadows, zoning criteria, views, and size (floor areas and program verification, façade surface areas, volume), aesthetics; or other requirements.

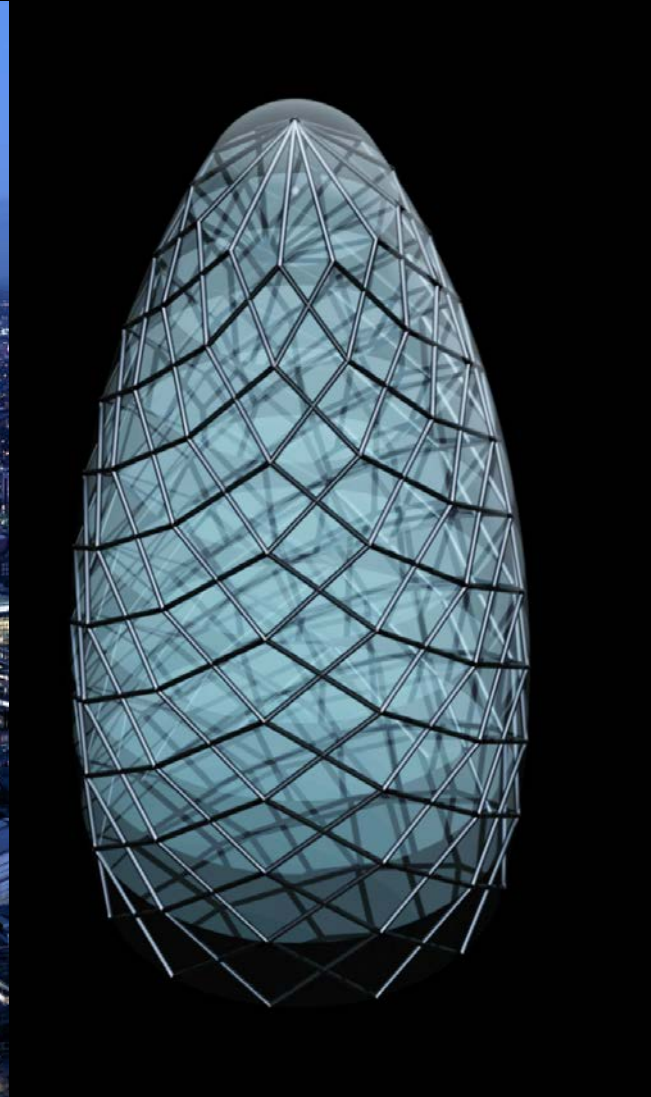


# Parametric Modelling



“**Design a Design Tool**” - Thinking creatively and not being constrained by one’s own thinking or by a limiting set of tools is the key to innovative designs and design processes.





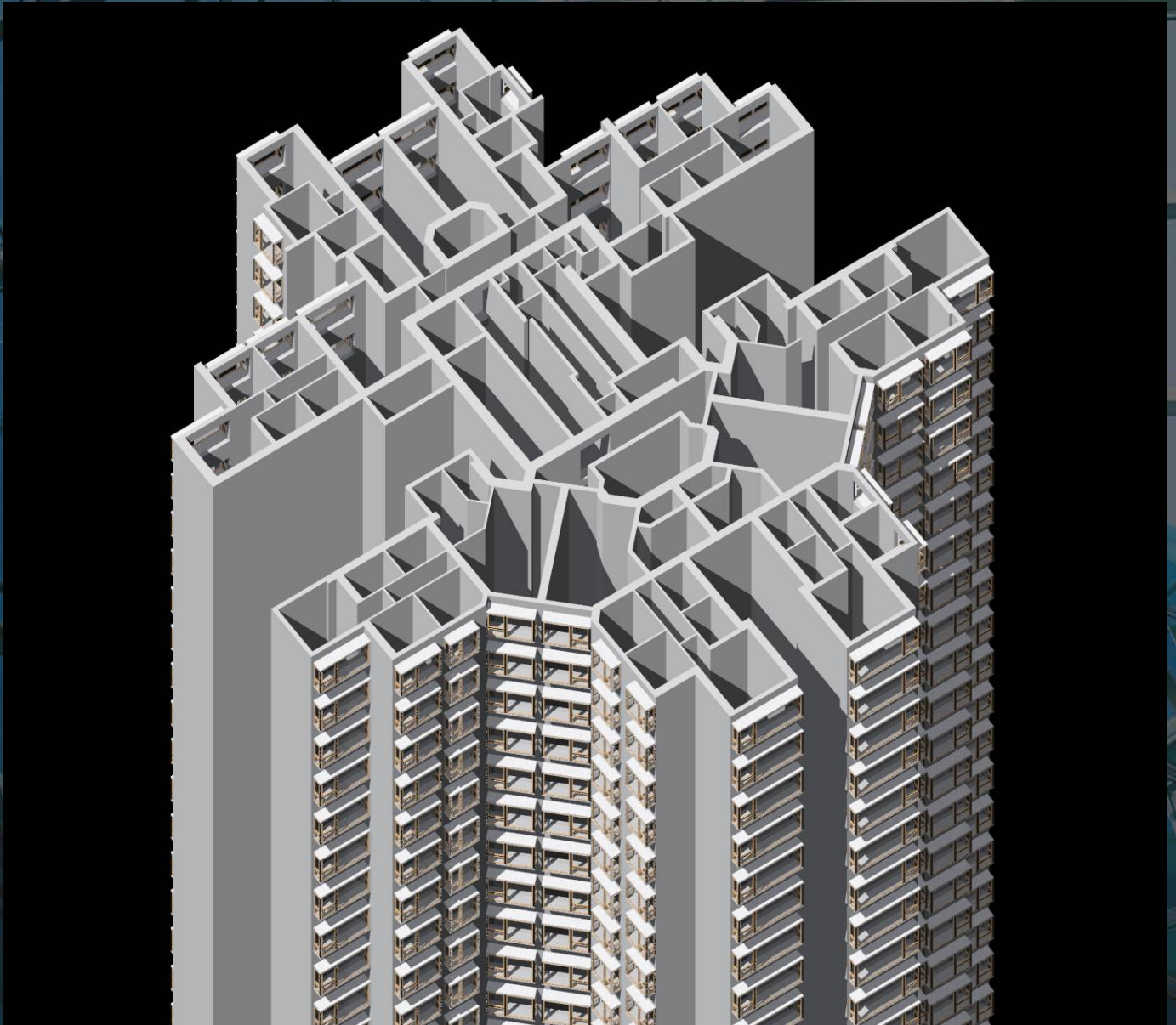




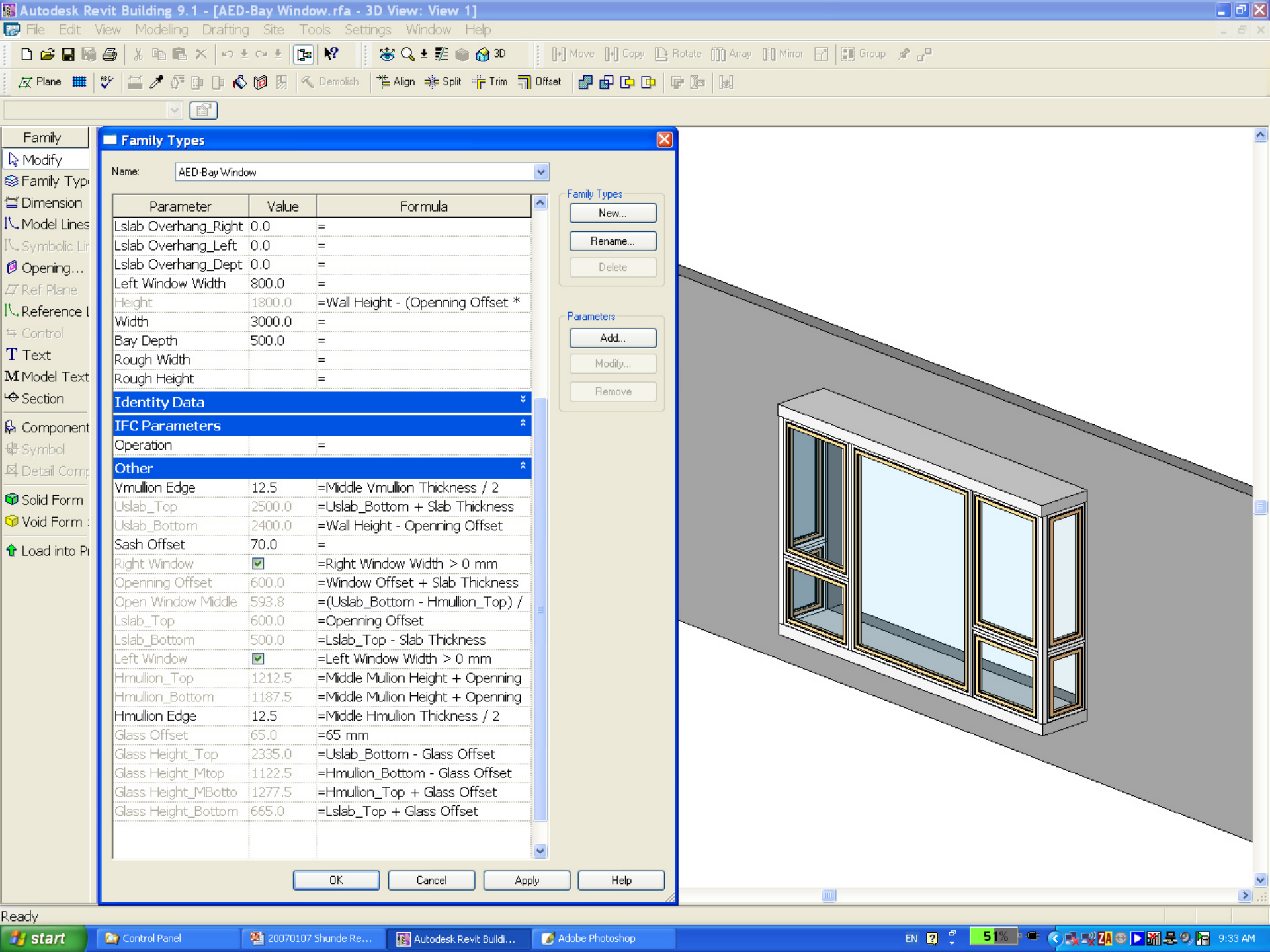
**REPETITIONS vs VARIATIONS**



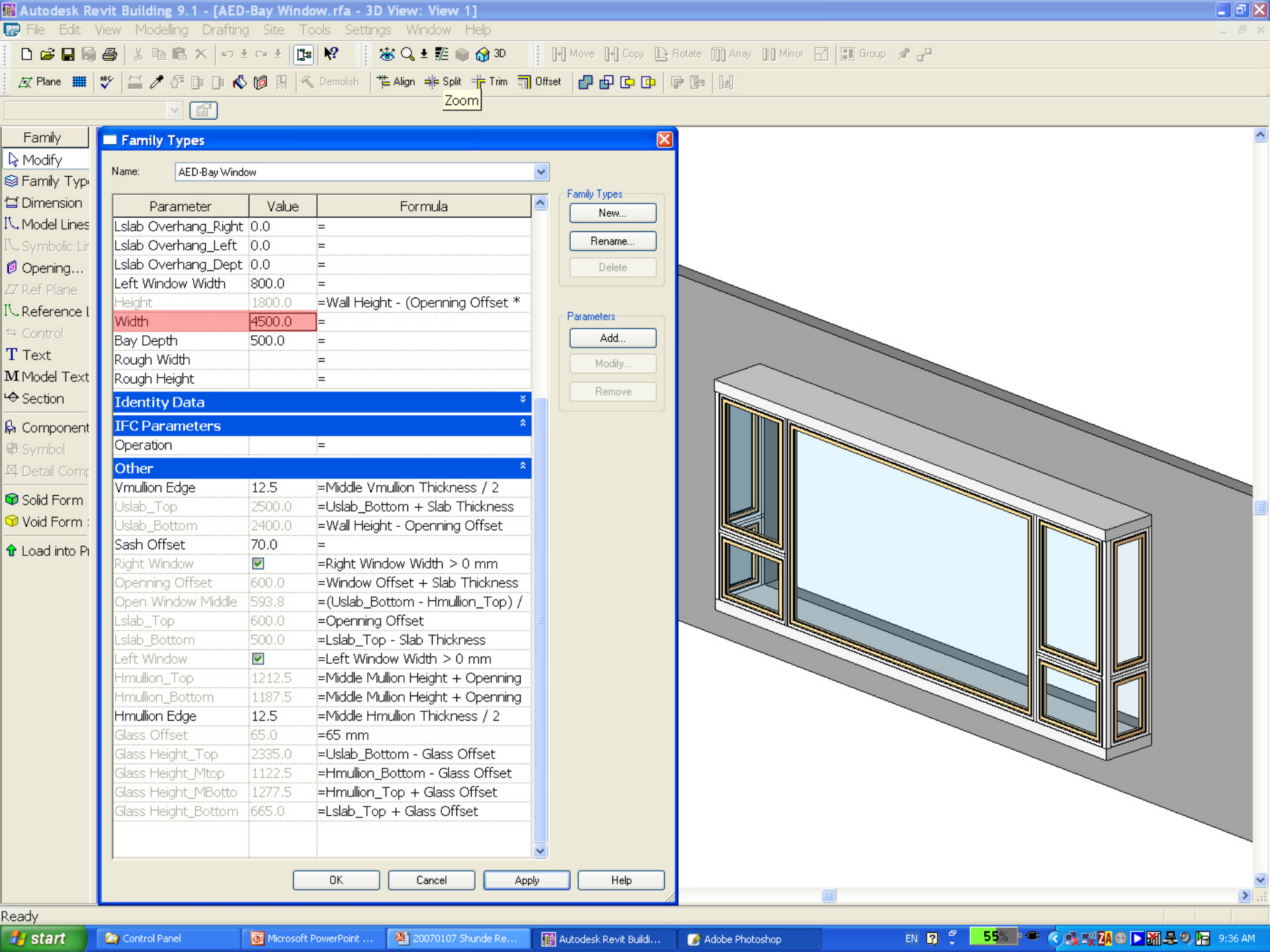
# PARAMETRIC MODELLING



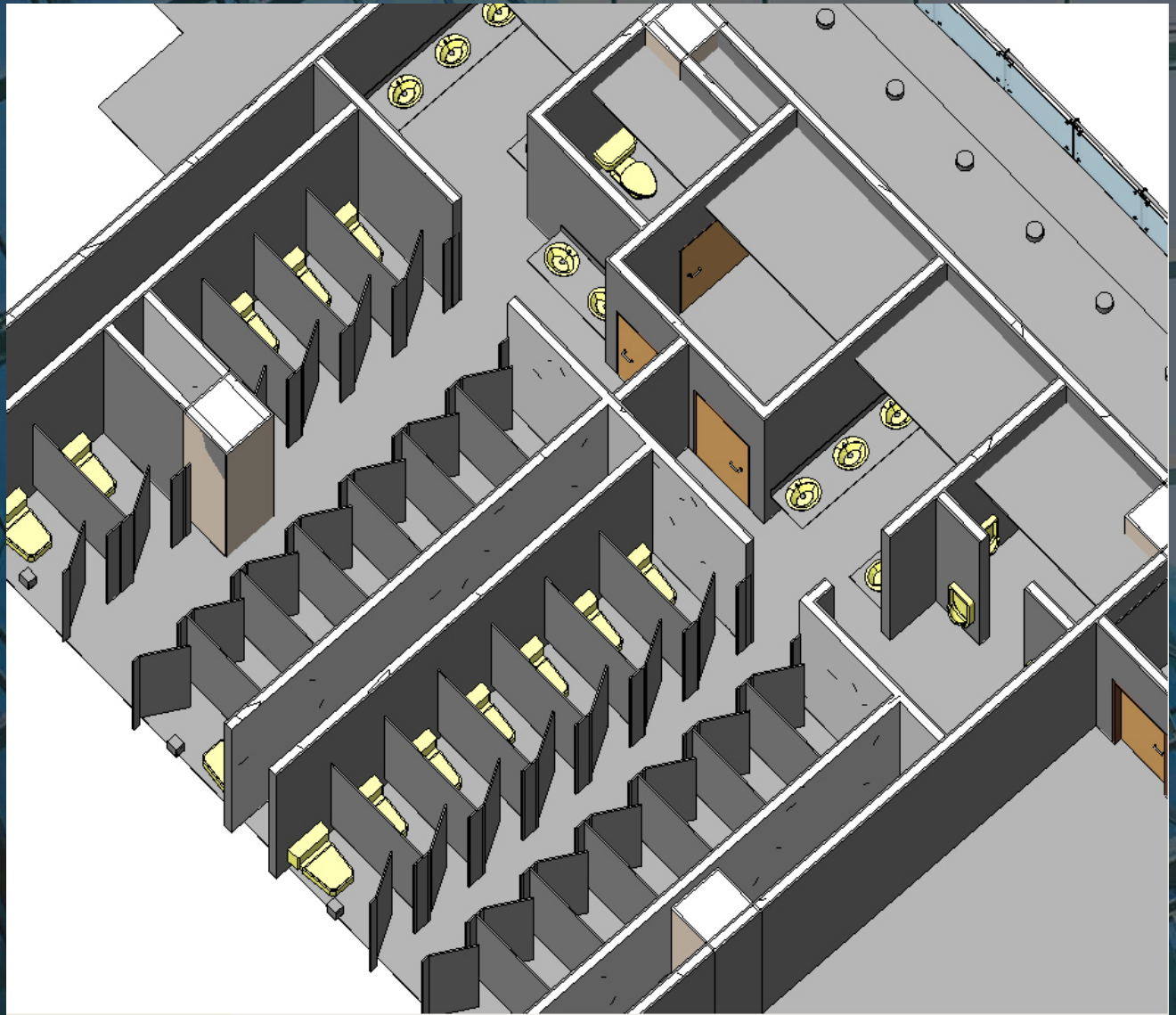






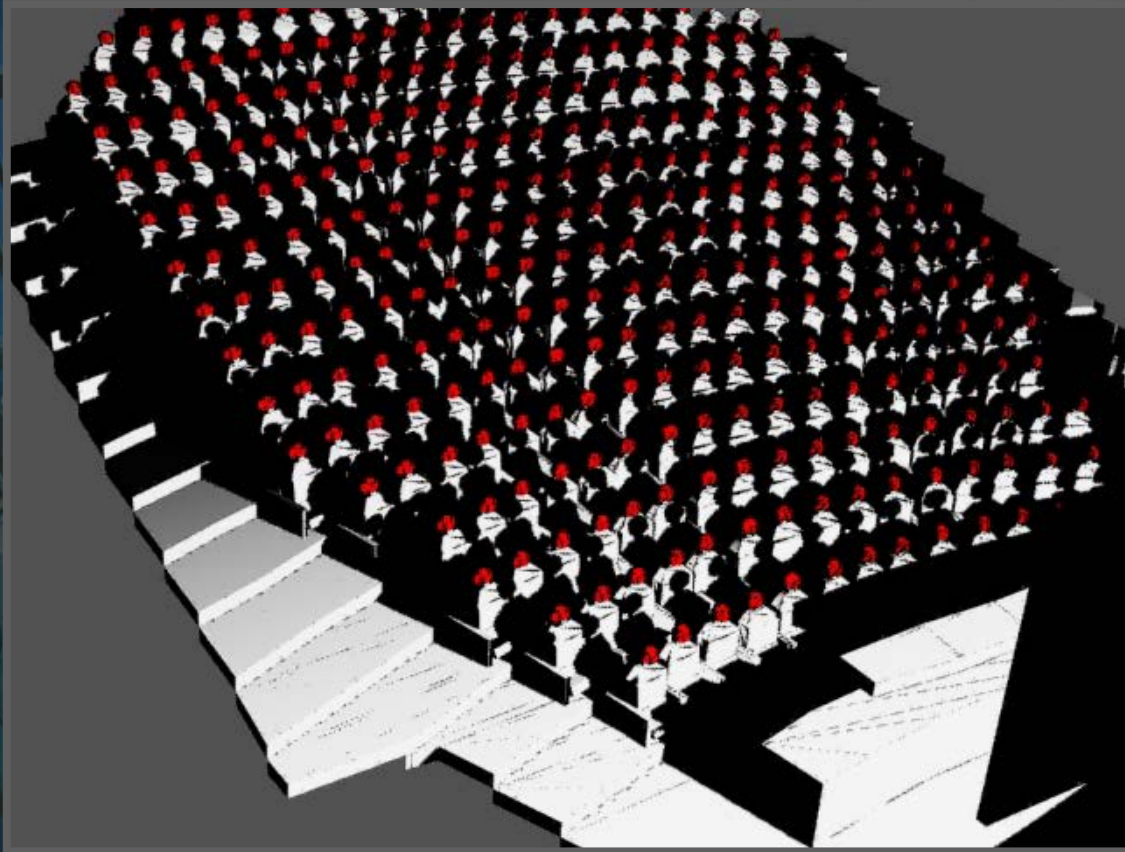




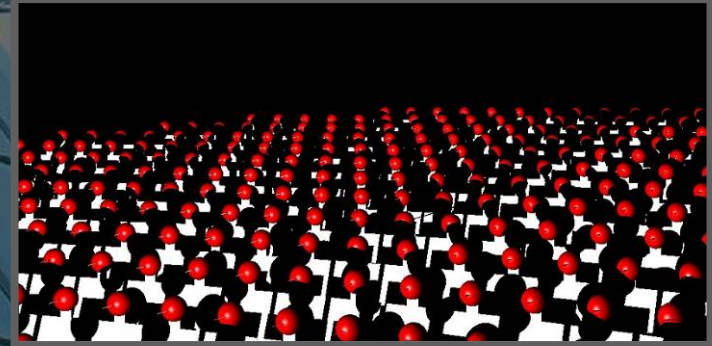


**CREATIVE TOOLS**

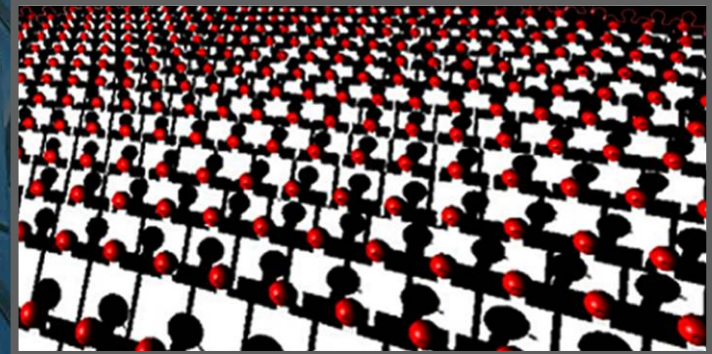




**Radiating Light Method**



Unsatisfactory sightlines



Satisfactory sightlines

**SIGHTLINE STUDIES**

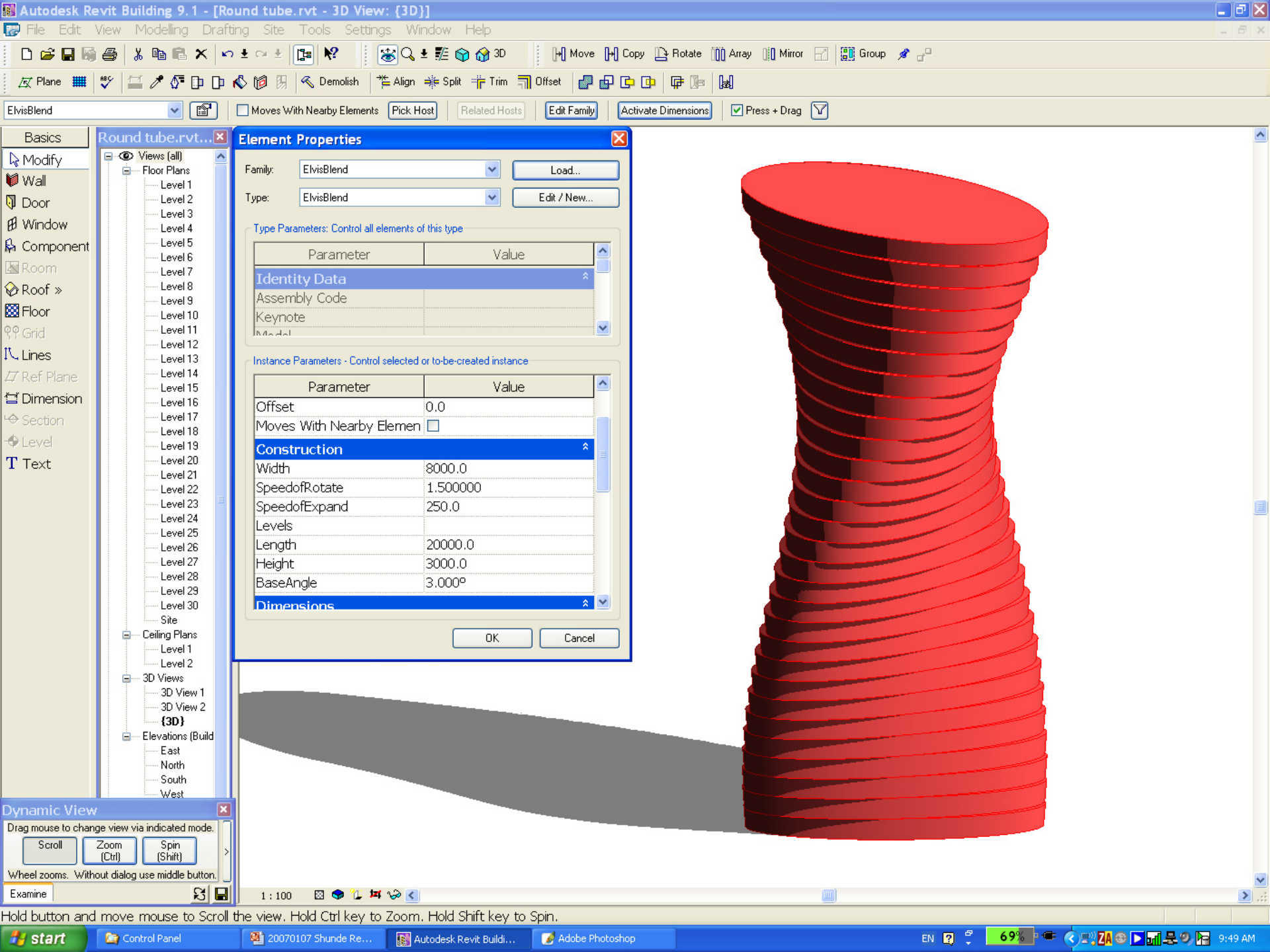


**FAÇADE PANEL DESIGN**

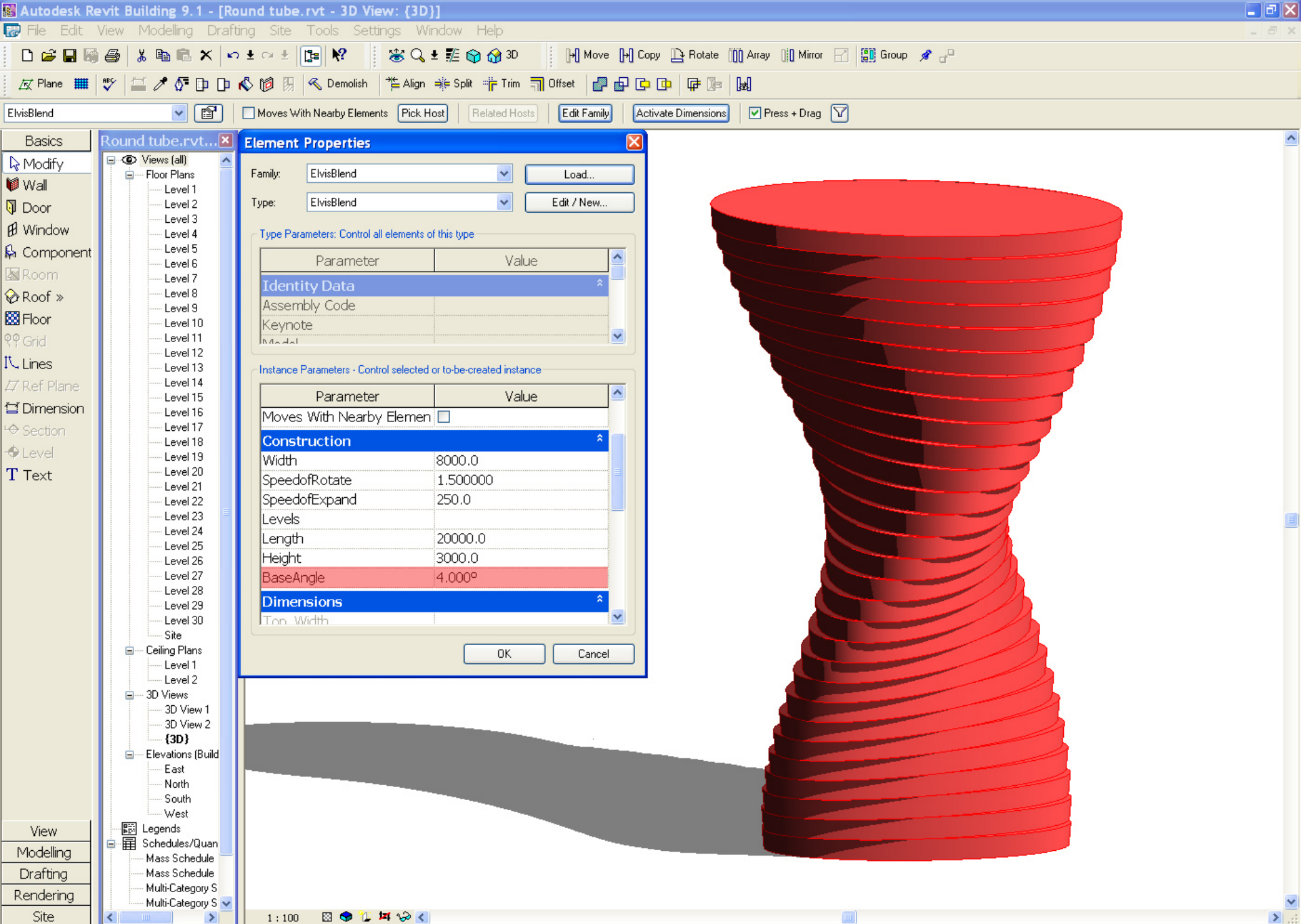




CCCUB  
TECHNOLOGY SYMPOSIUM 2010

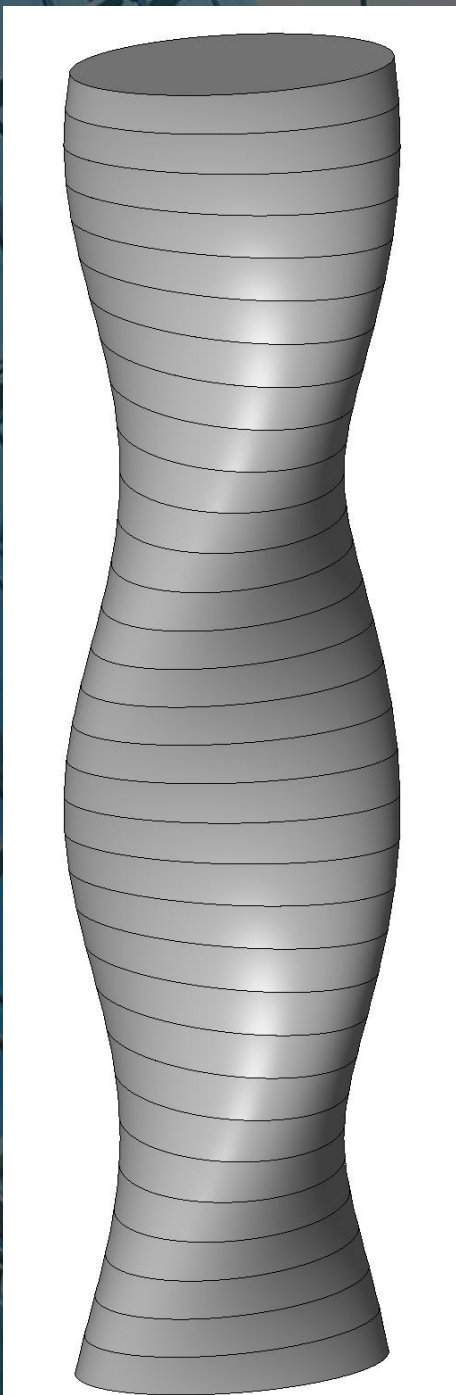






Click to select, TAB for alternates, CTRL adds, SHIFT unselects.









## absoluteworld BUILDING 2

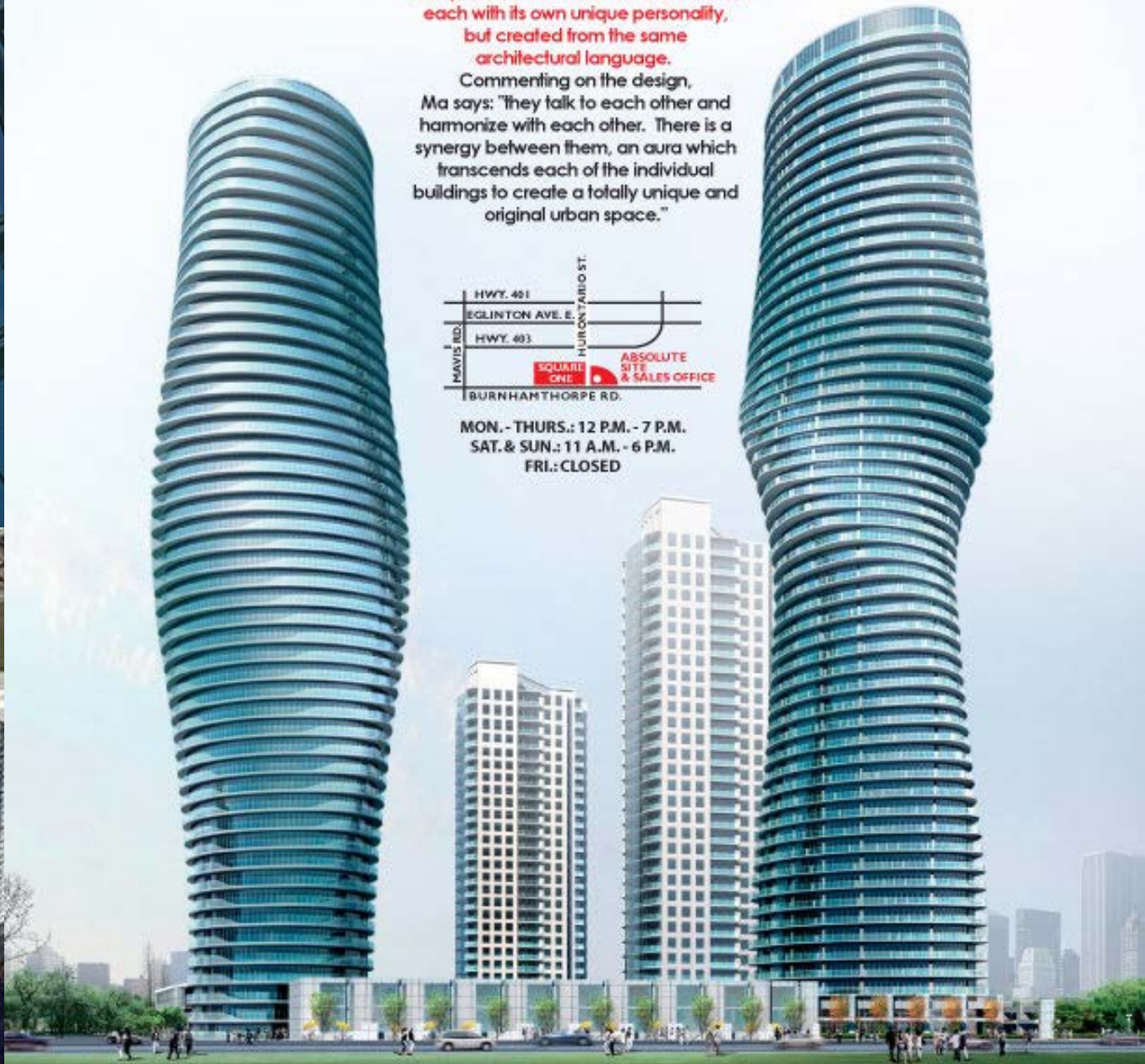
AbsoluteWorld's two buildings, as envisioned by their creator, Yansong Ma. The buildings were designed to complement and enhance each other, each with its own unique personality, but created from the same architectural language.

Commenting on the design, Ma says: "They talk to each other and harmonize with each other. There is a synergy between them, an aura which transcends each of the individual buildings to create a totally unique and original urban space."

## absoluteworld BUILDING 1



MON. - THURS.: 12 P.M. - 7 P.M.  
SAT. & SUN.: 11 A.M. - 6 P.M.  
FRI.: CLOSED



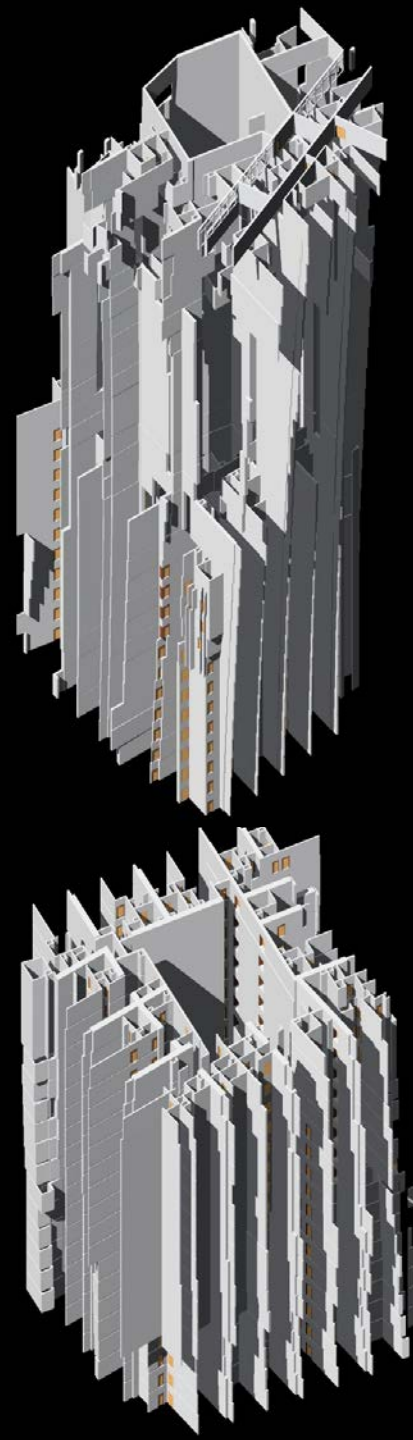


Program: Residential, Site Area: 3,746 sqm  
Floor Area: 659,659 sqm | Building Height: 345 m



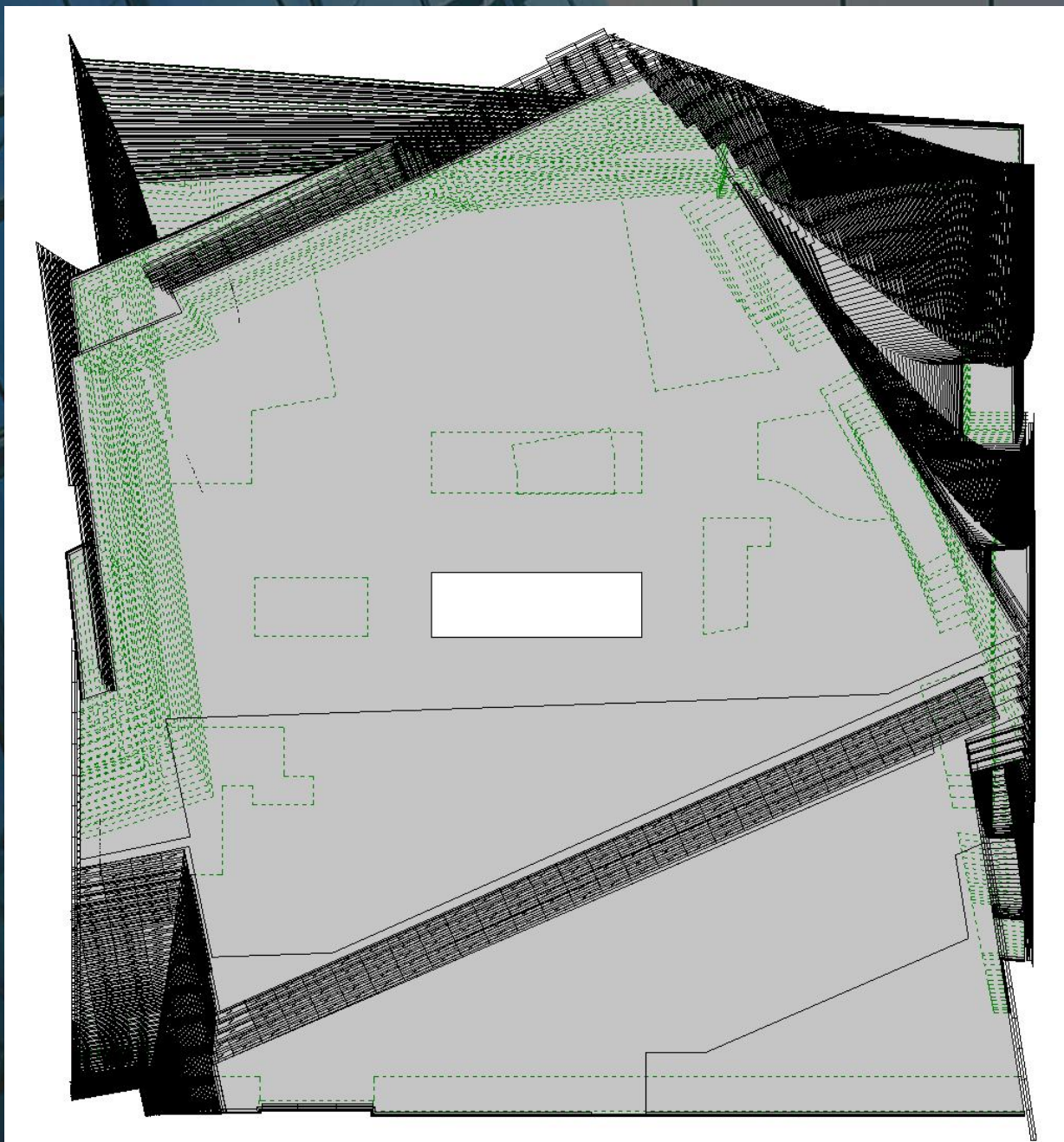
Dubai **Ocean Heights One**



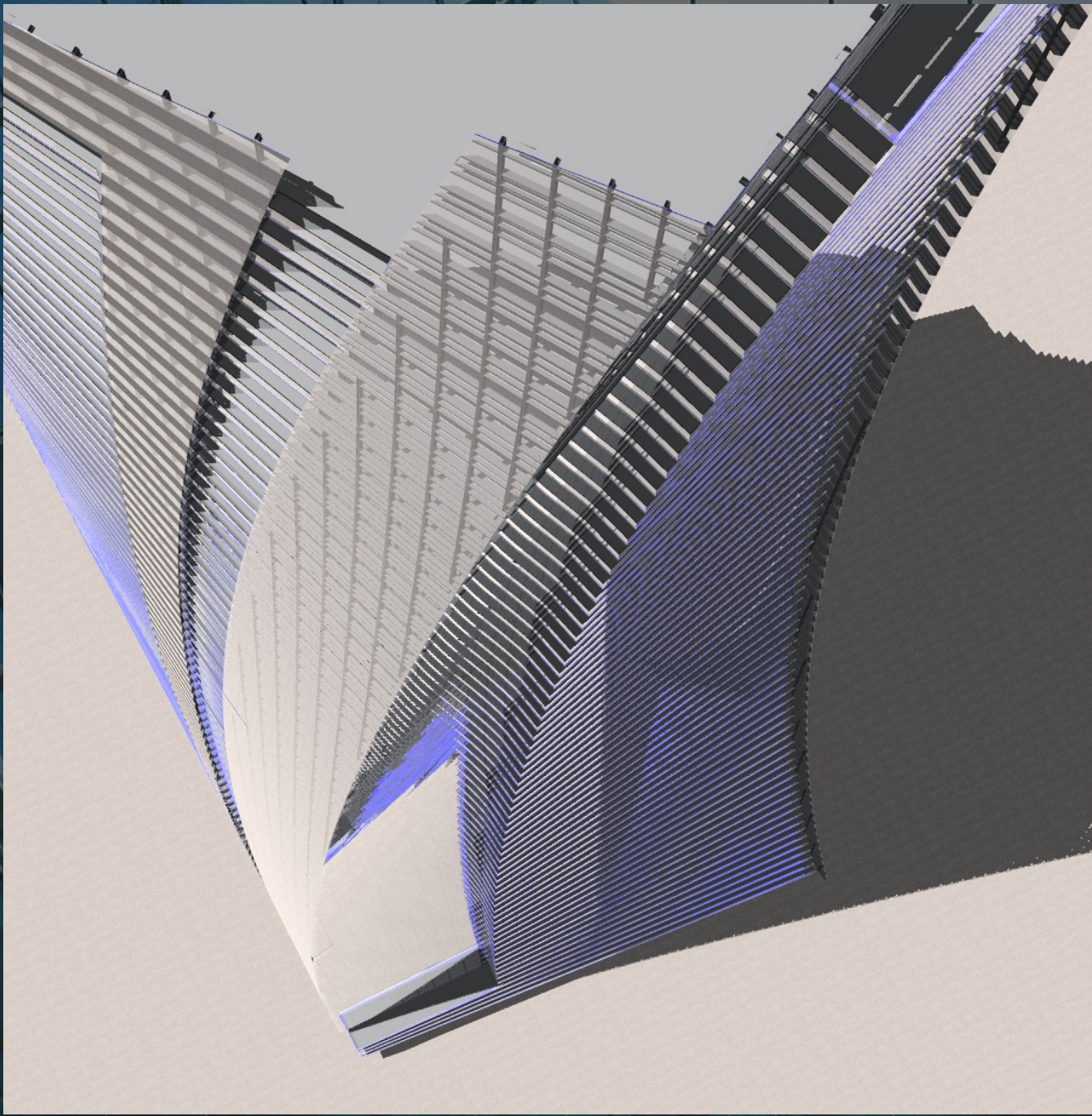


**COMPLEX GEOMETRY**

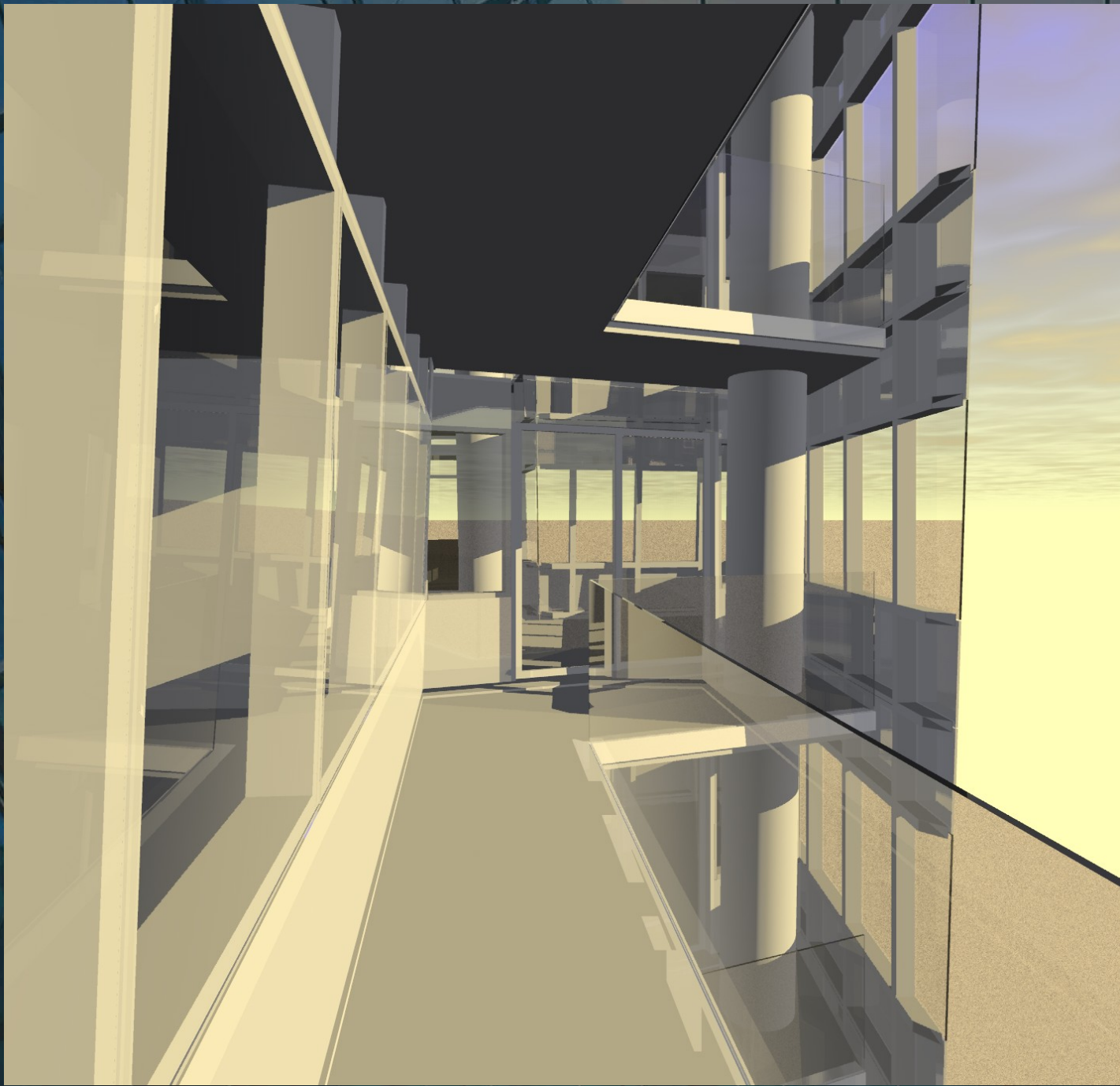




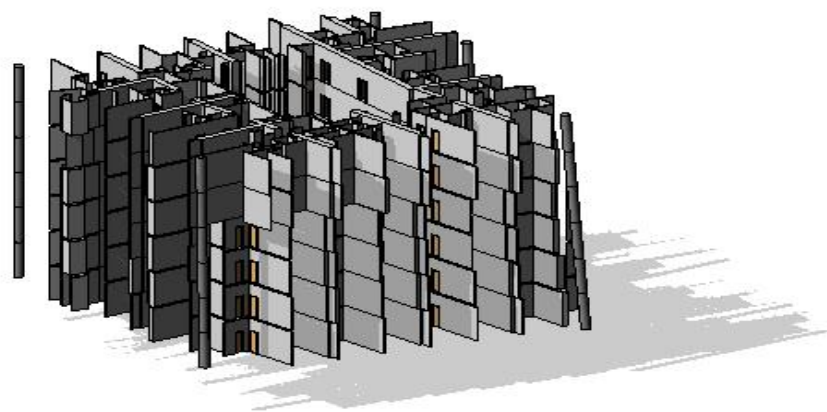


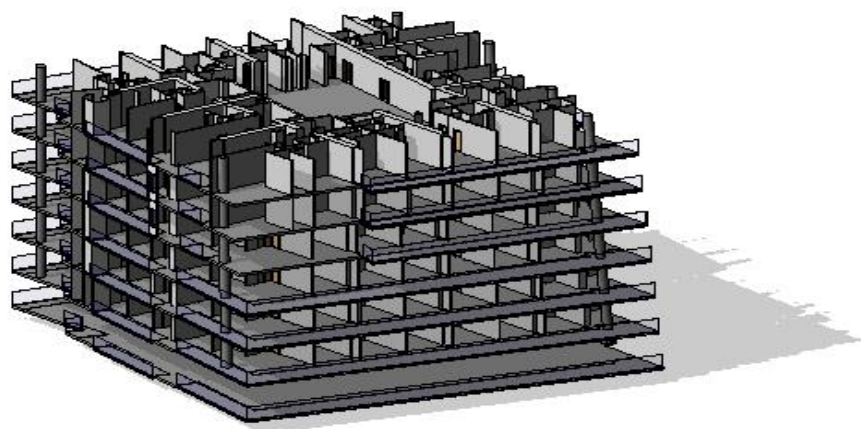
















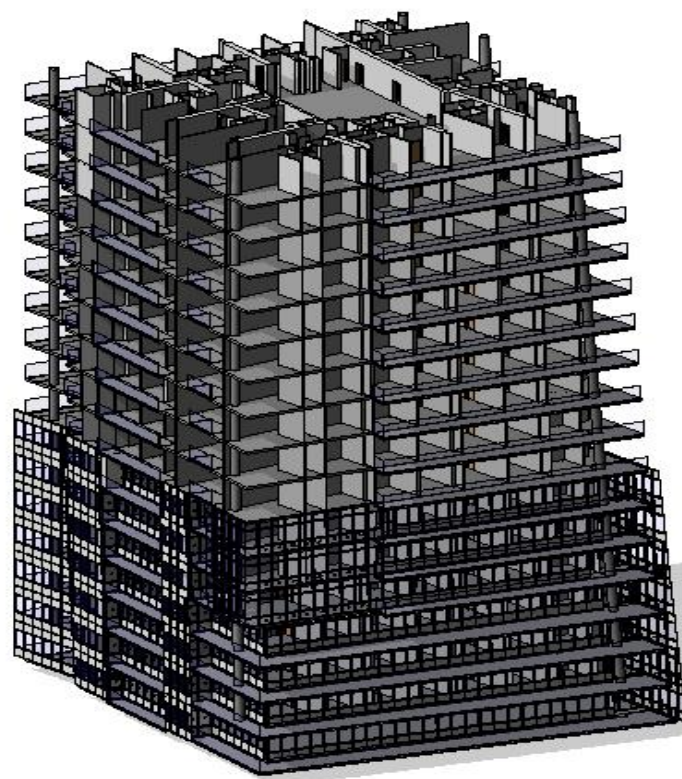








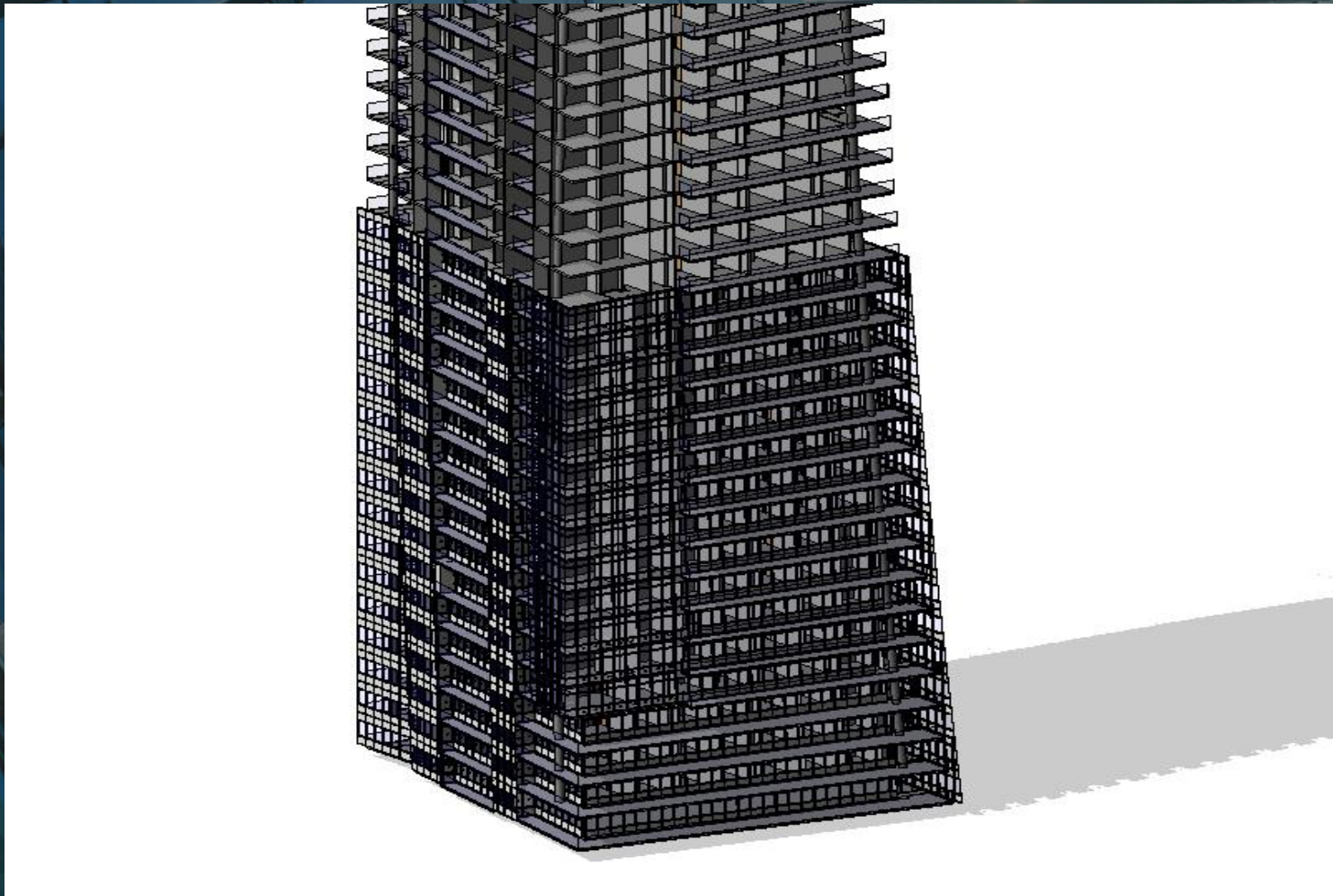




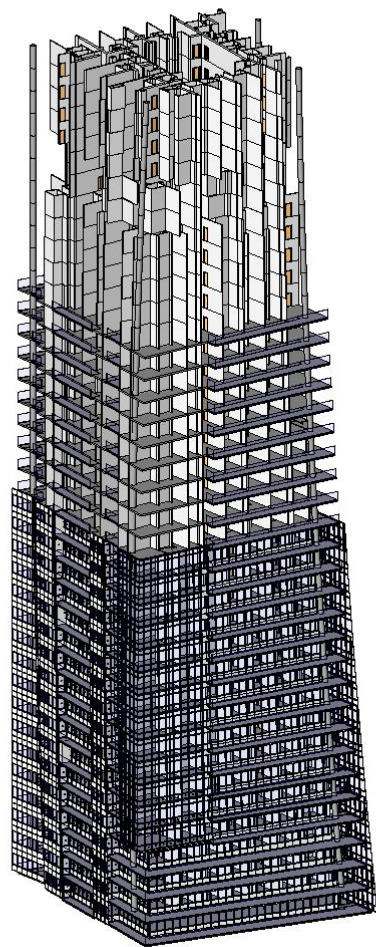


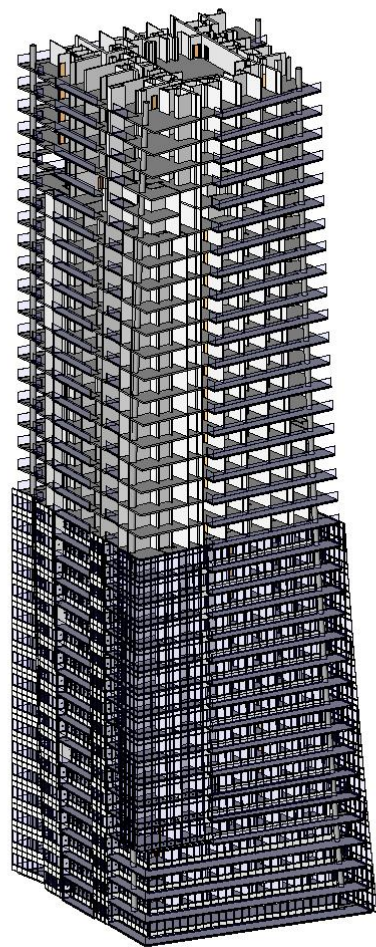




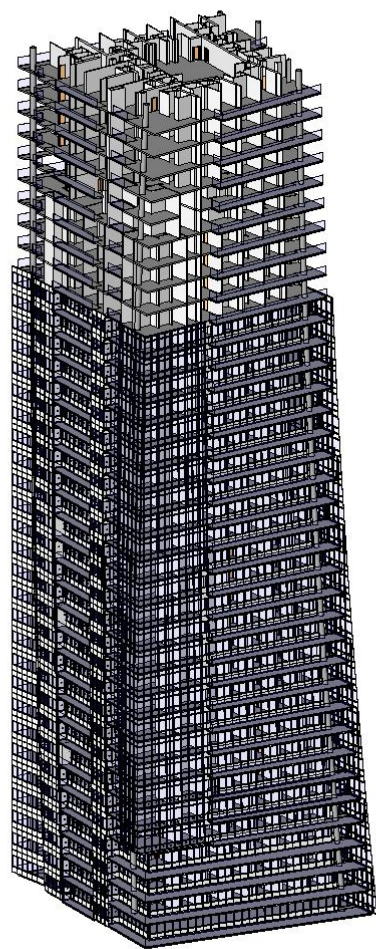


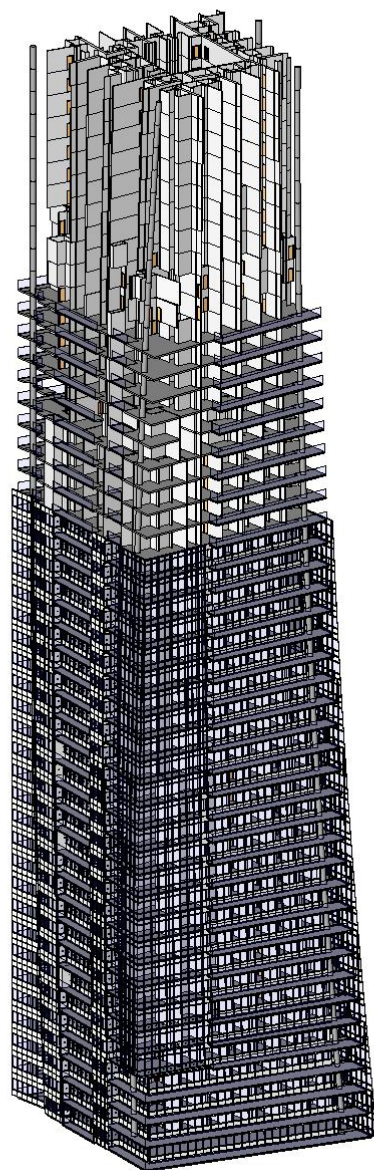




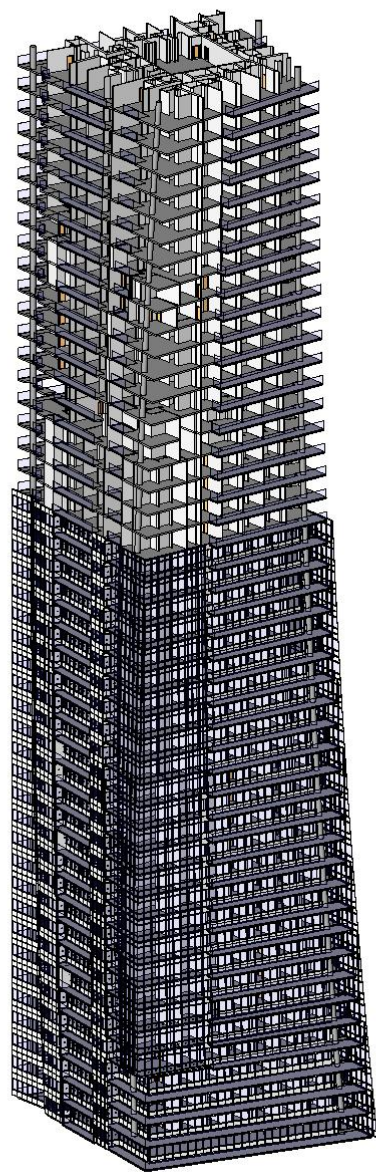




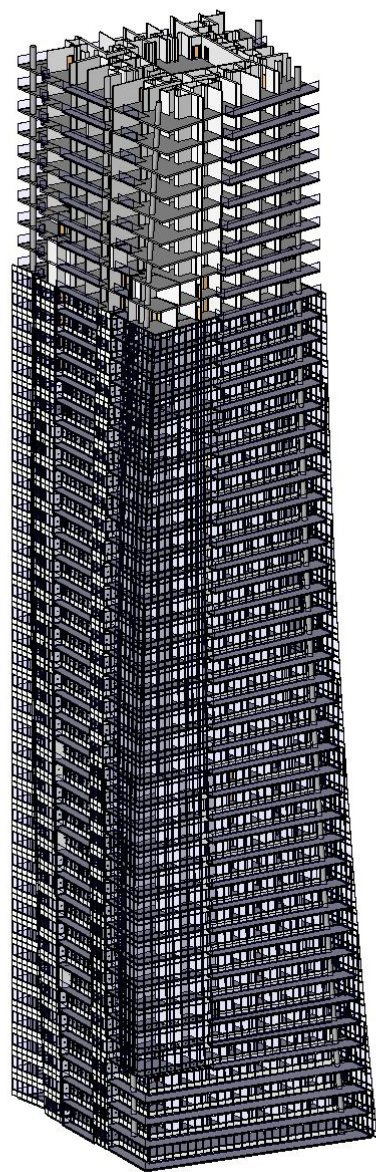




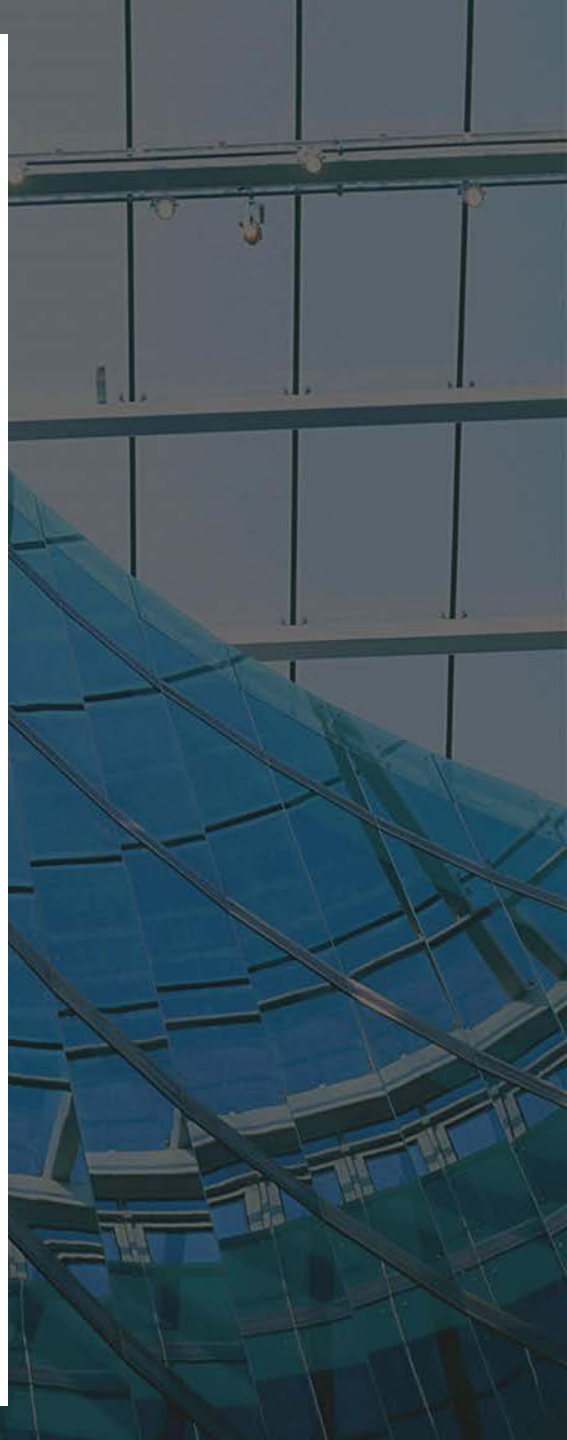
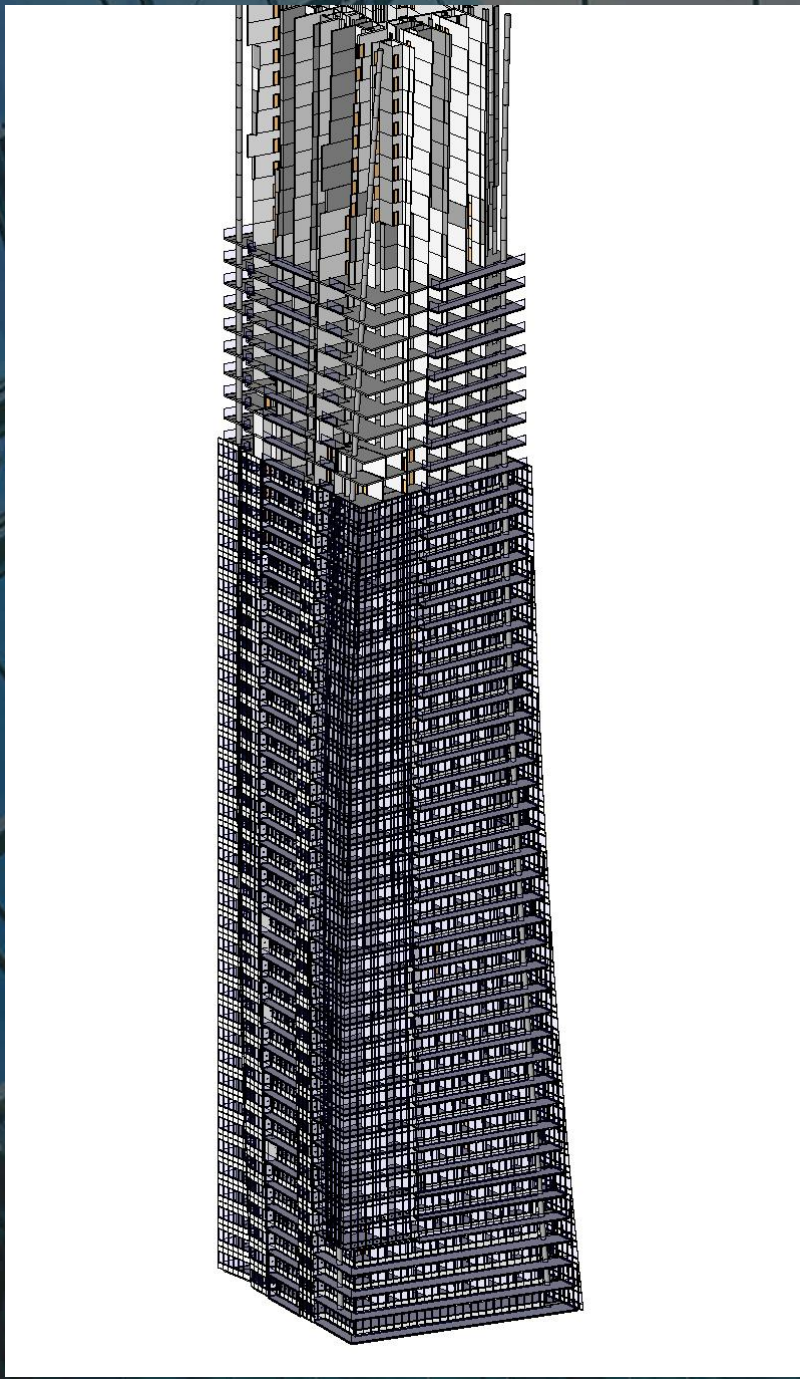




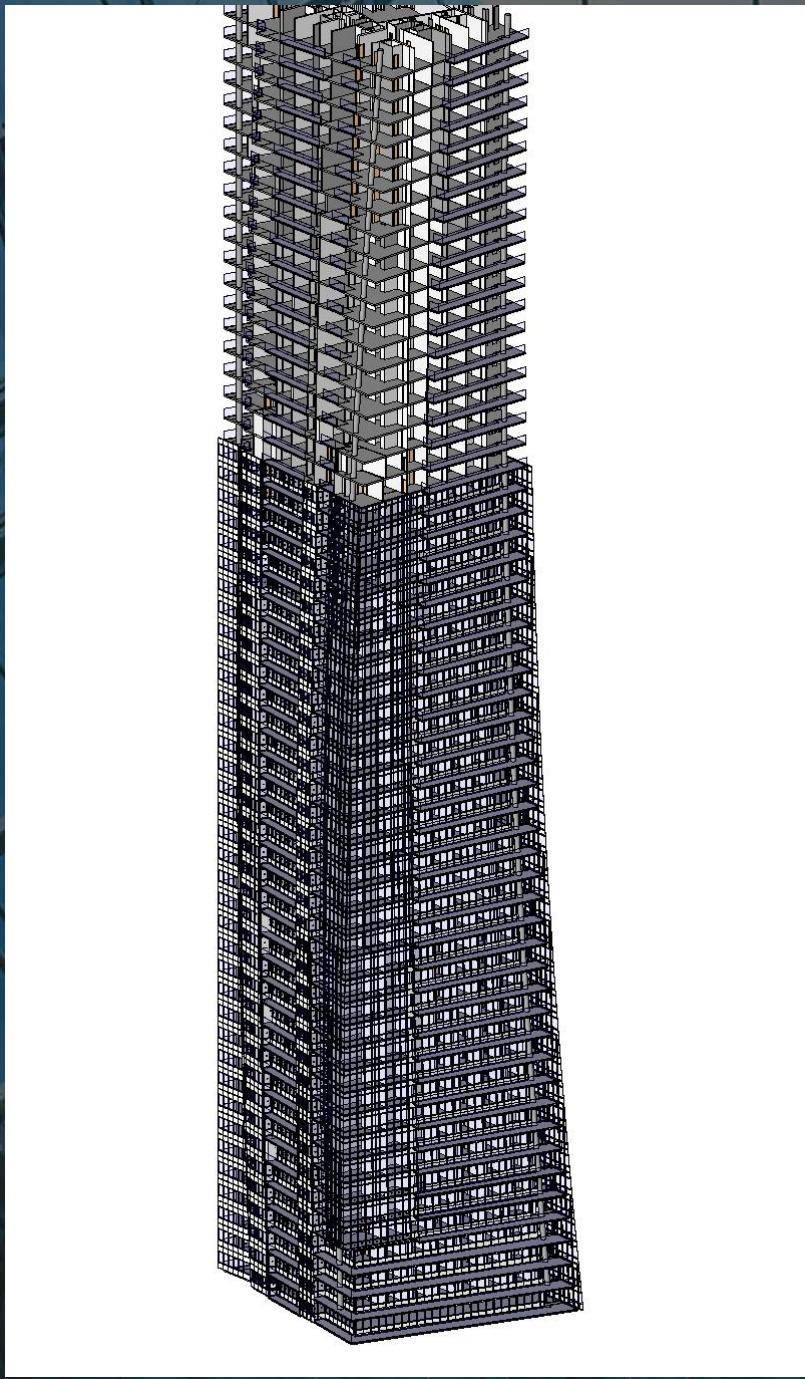




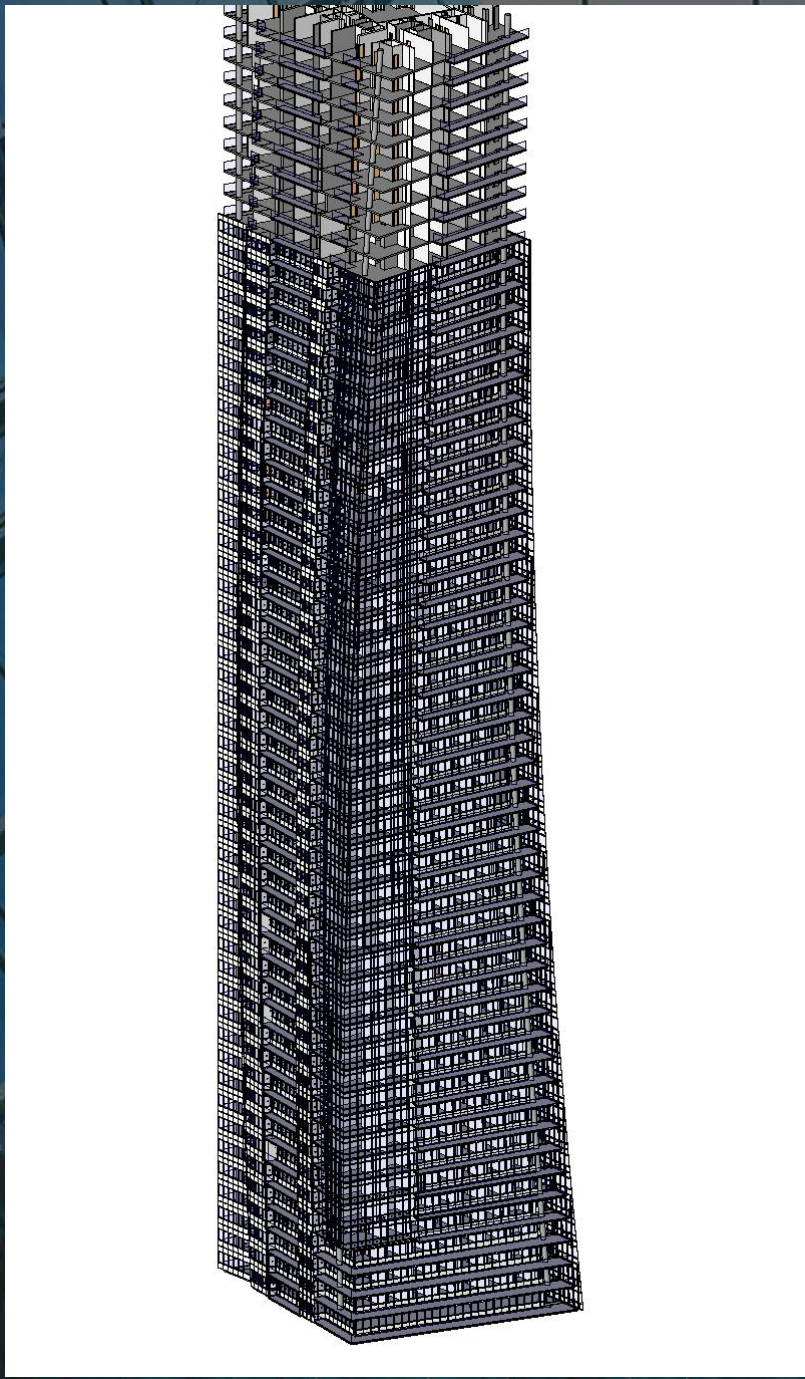










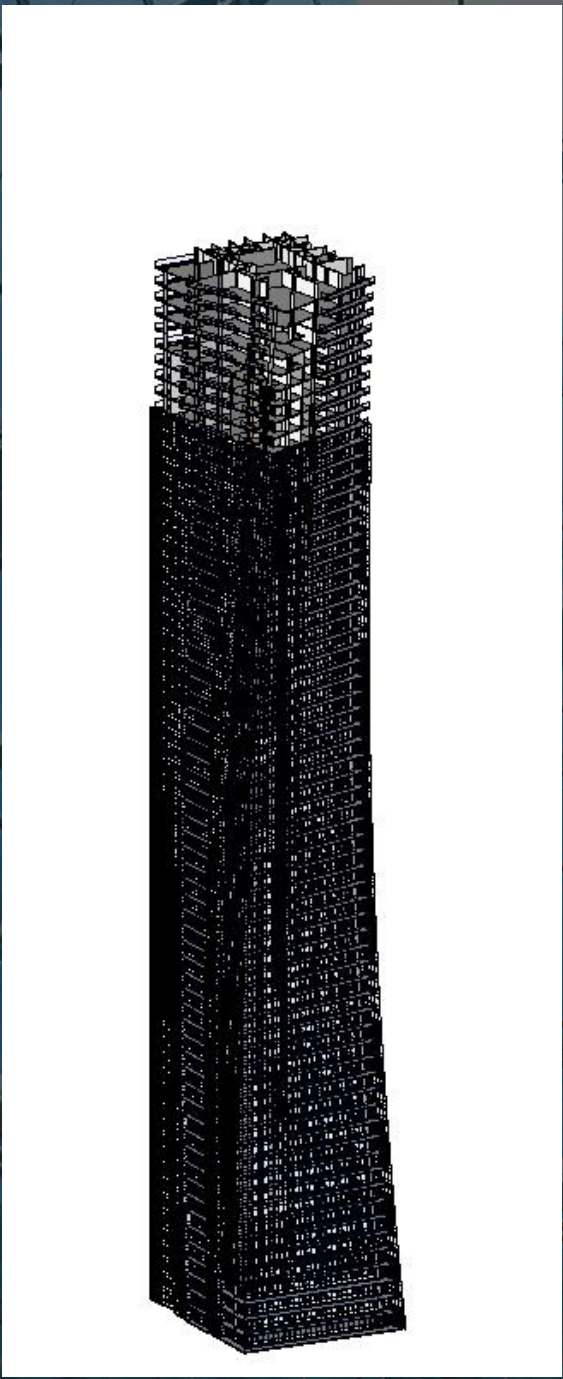






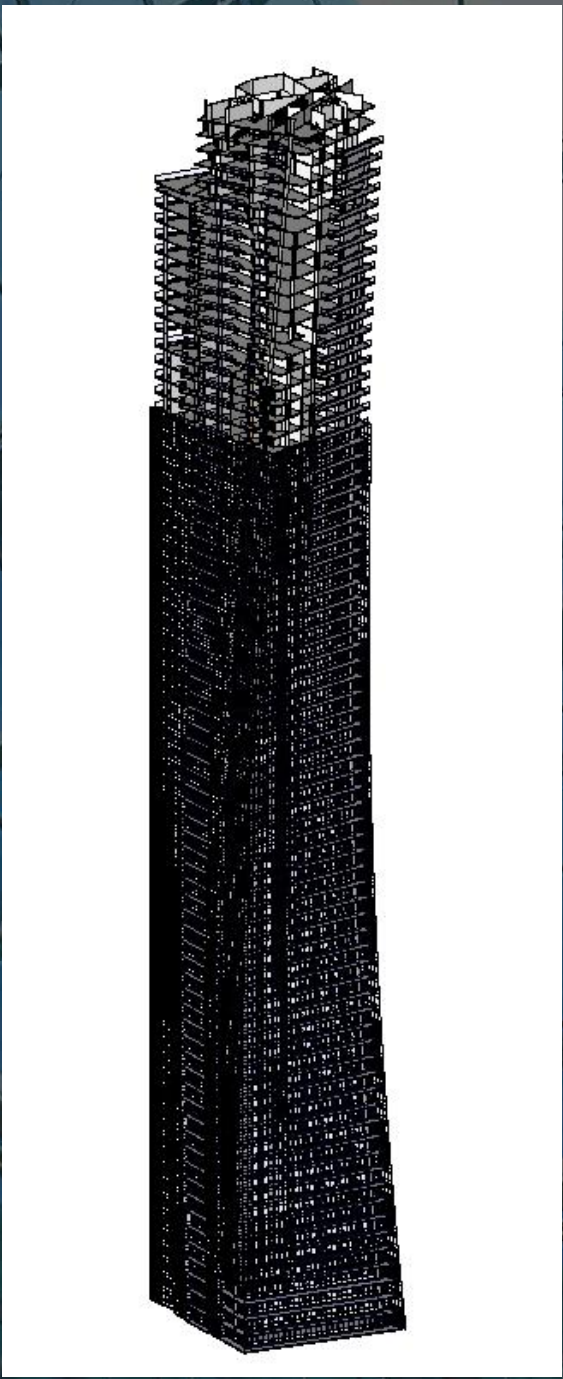






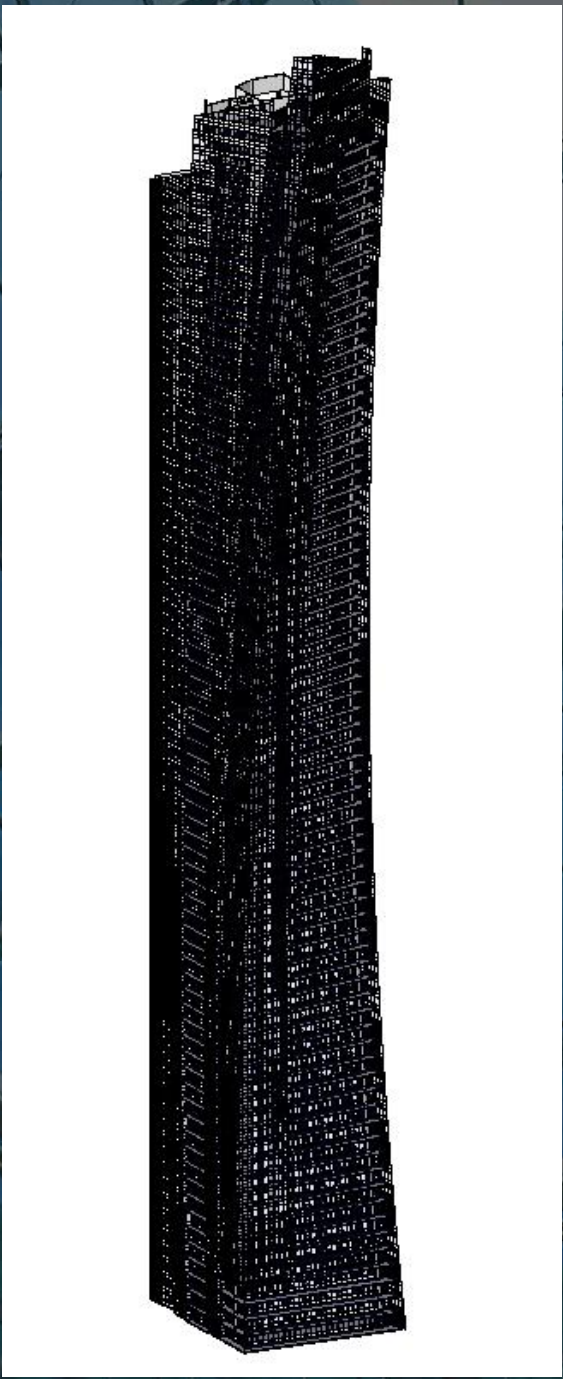




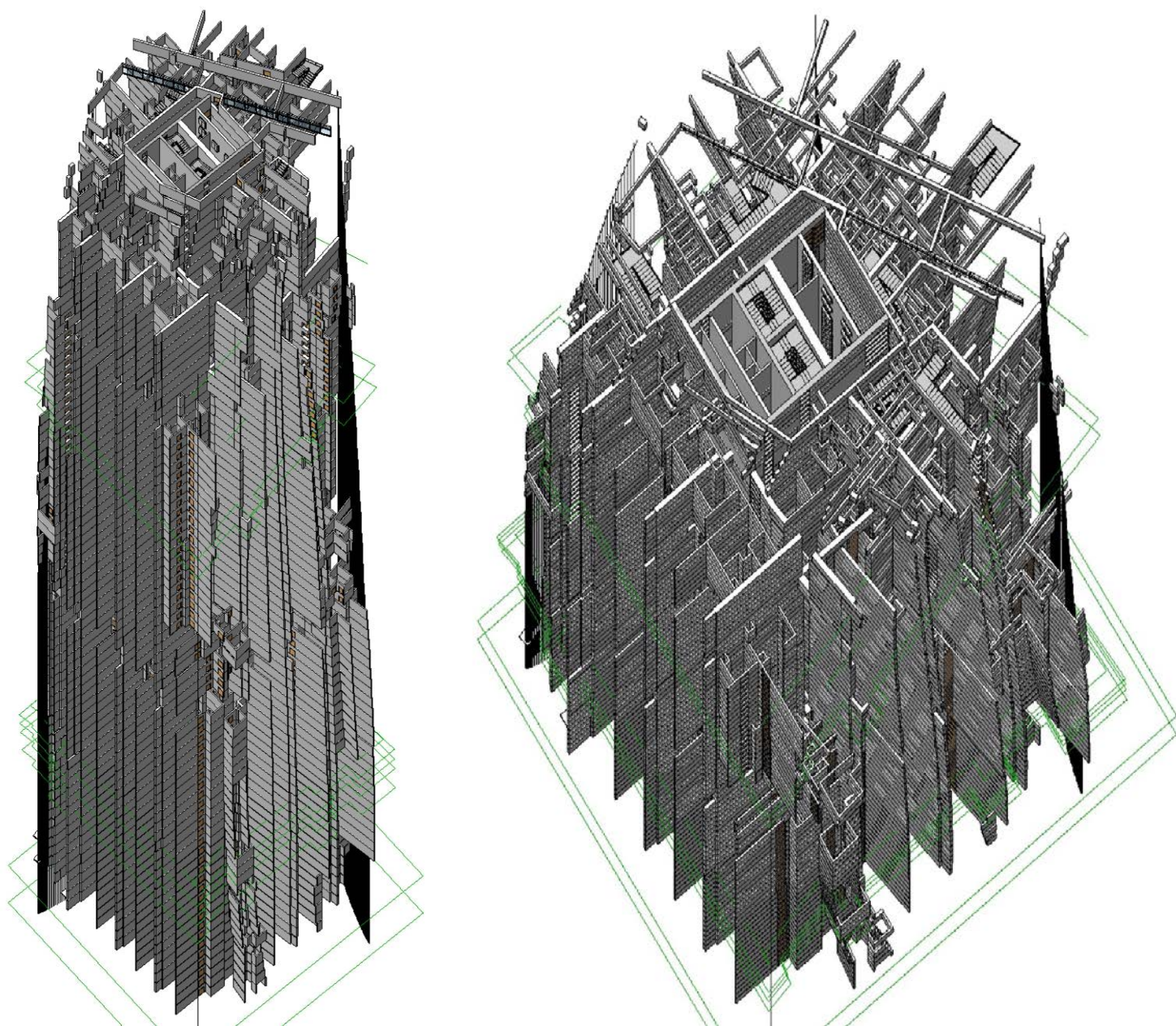






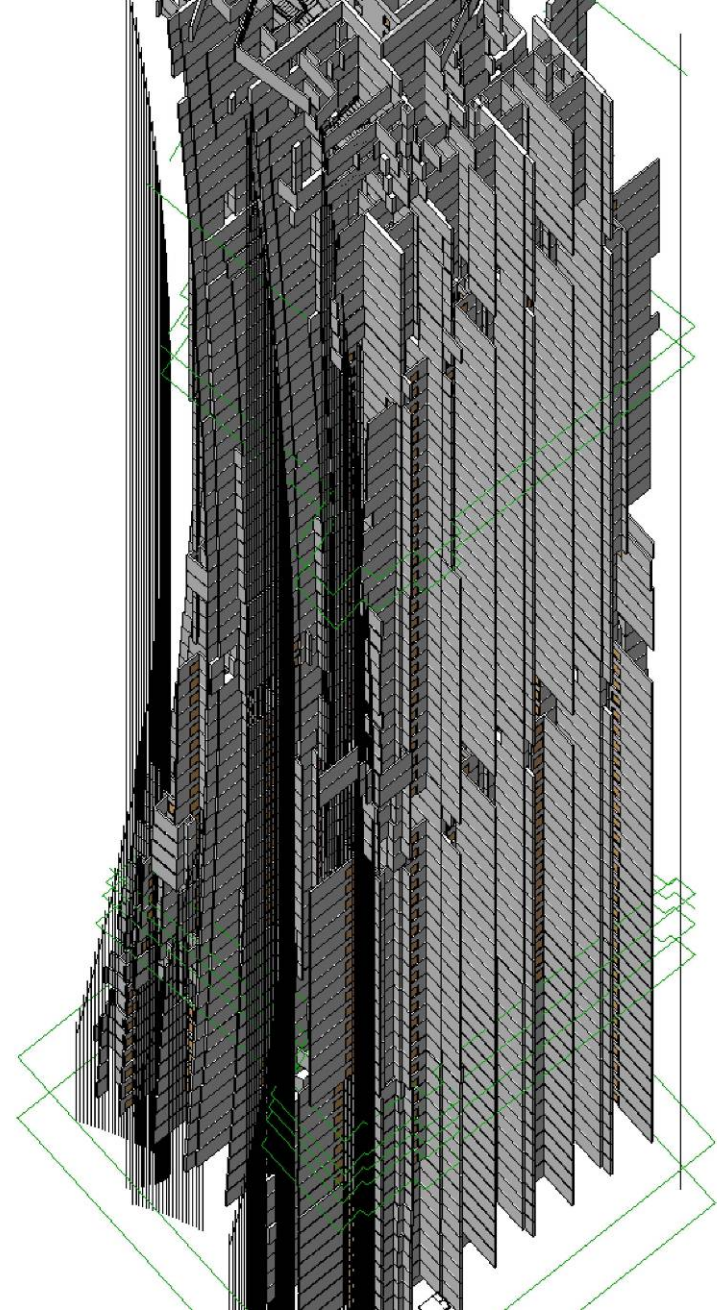
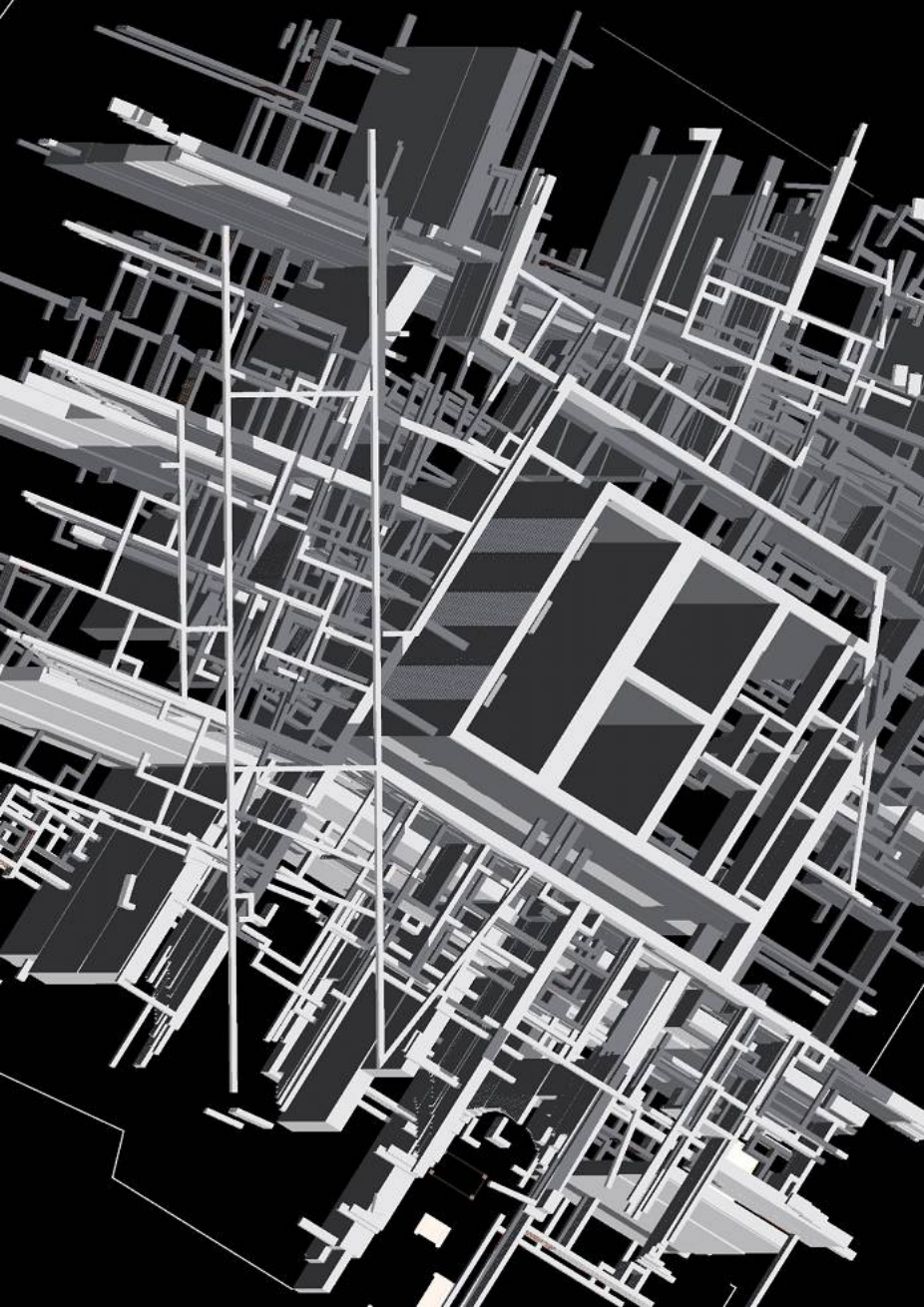






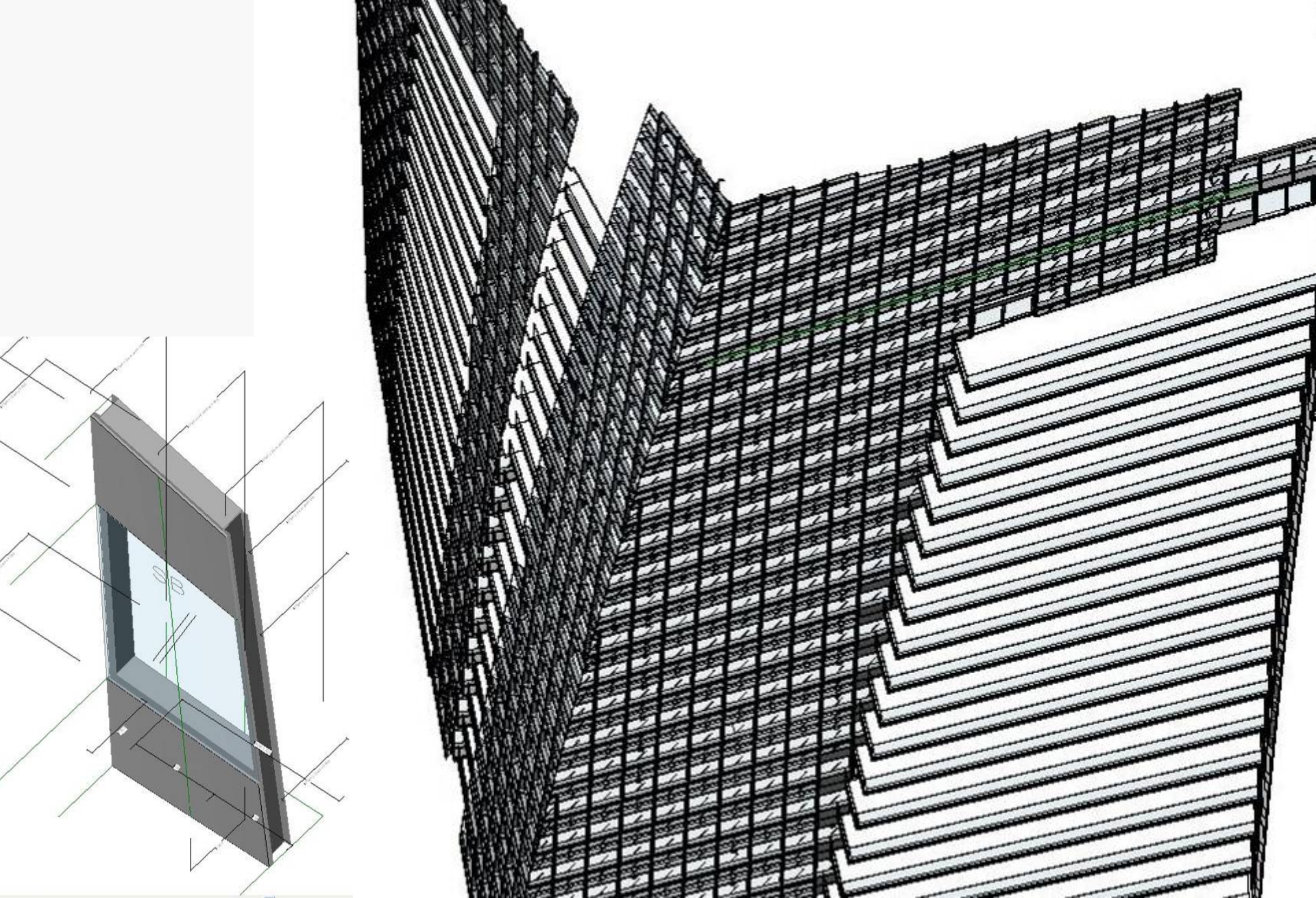
**VERTICAL CO-ORDINATION**





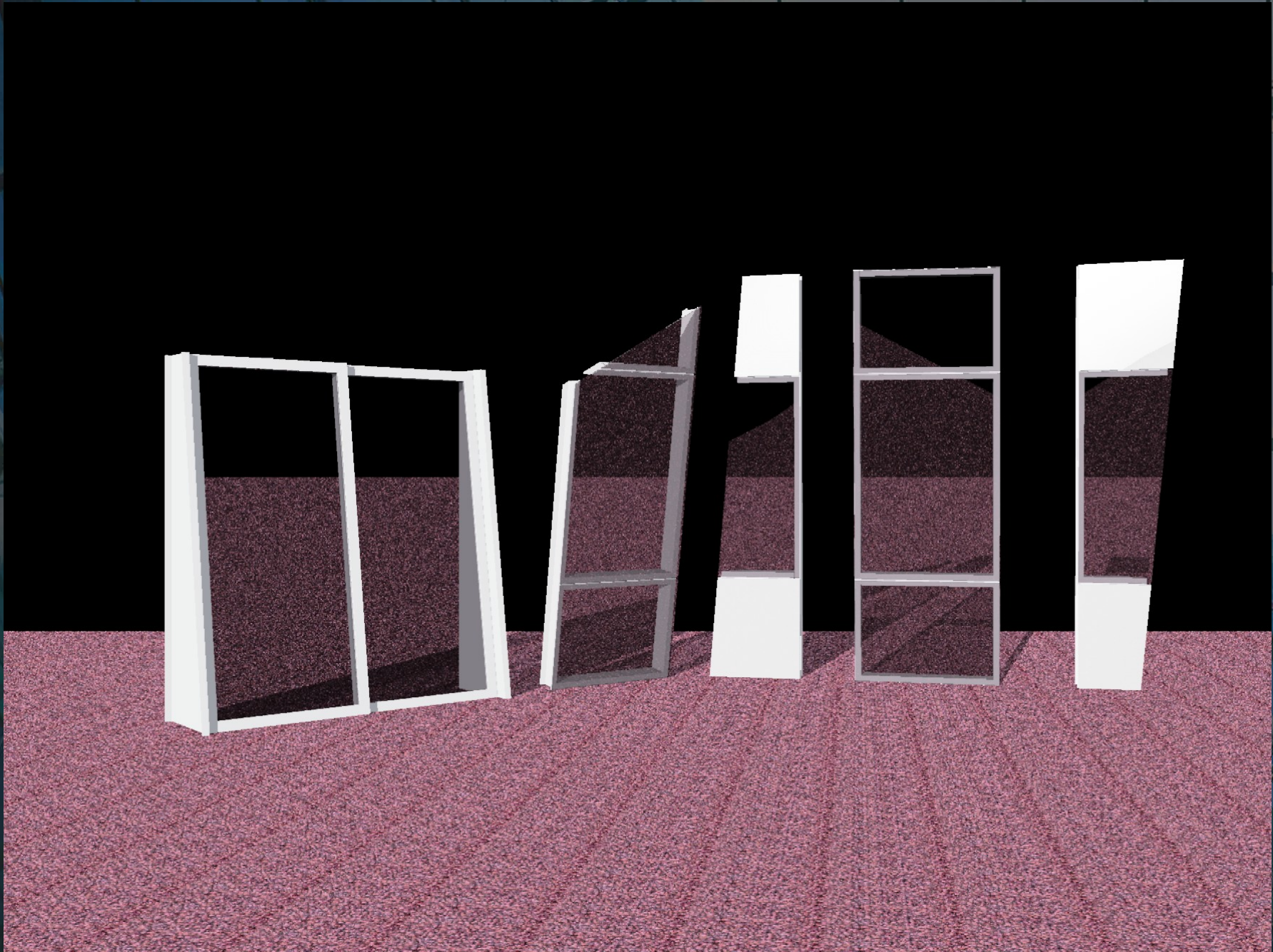
**INTERNAL vs EXTERNAL**





**COMPLICATED CURTAIN WALL**







Autodesk Revit Structure 4 - [Ocean Heights 1 R4 Local 2.rvt - Schedule: Multi-Category Schedule]

FileEditViewModellingDraftingSiteToolsSettingsWindowHelp

PlaneABC

Demolish

AlignSplitTrimOffset

MoveCopyRotateArrayMirrorGroup

[Not Editable] Level 31 to

Headers: GroupUngroupRows: NewDeleteShow

Basics

Views [all]

Structural Plans

CAD REFERENCE

Level 1

Level 1 - An

Level 2

Level 2 - An

Level 4

Level 10

Level 20

Level 30

Level 40

Level 50

Level 60

Level 65

Level 70

Level 75

3D Views

3D View 1

3D View 2

3D View 3

3D View 4

3D View 5

3D View 6

Copy of 3D View 1 - An

{3D}

Elevations (Build)

East

North

South

West

Sections (Building)

Section 1

Section 2

Section 3

Legends

Schedules/Quantities

Multi-Category Schedule

Multi-Category Schedule

Sheets (all)

Families

Annotation Symbols

Ceilings

Curtain Panels

Curtain Systems

Curtain Wall Multi

Detail Items

Doors

Floors

Furniture

View

Architectural

Drafting

Rendering

Site

Massing

Modelling

Construction

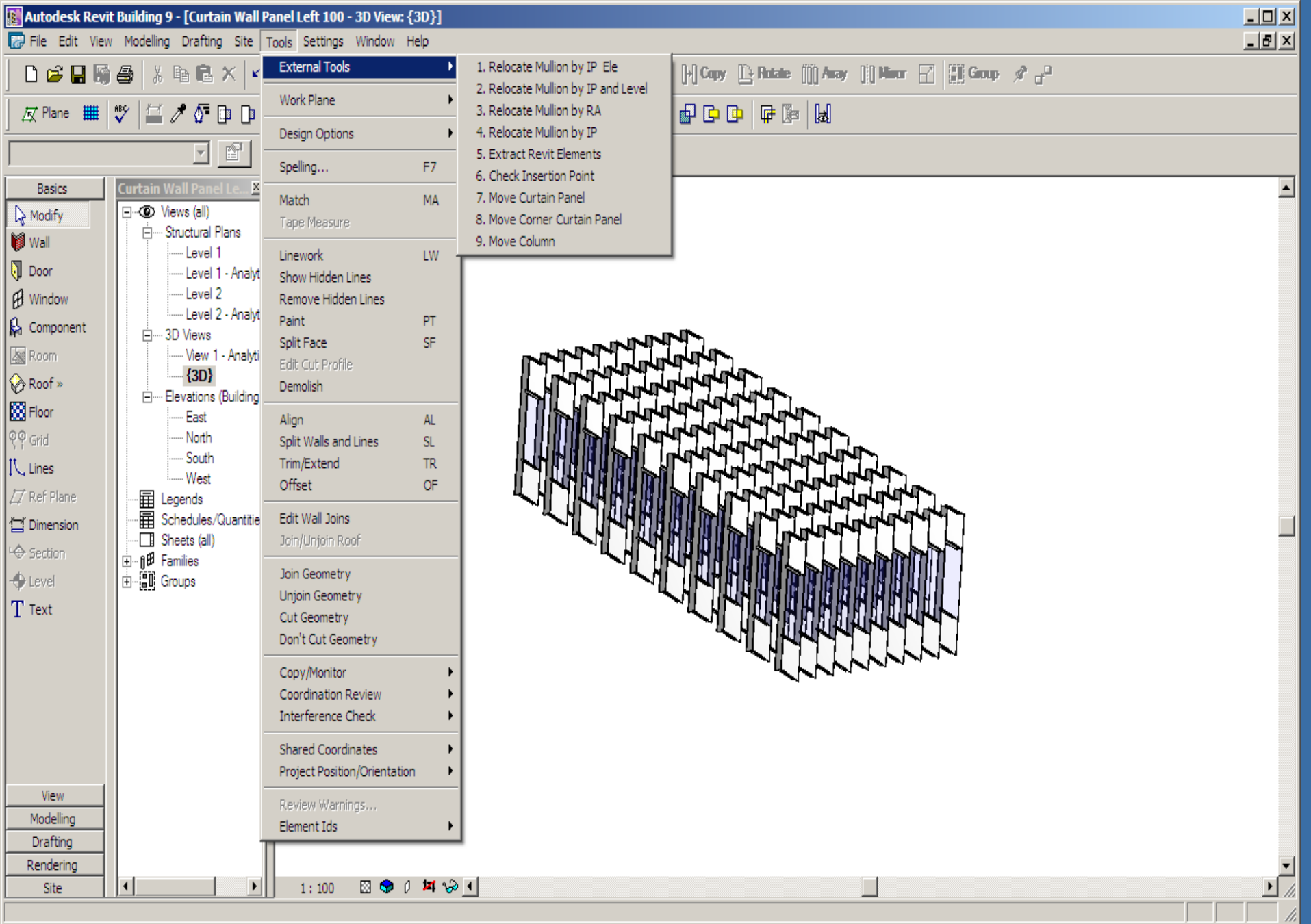
Multi-Category Schedule

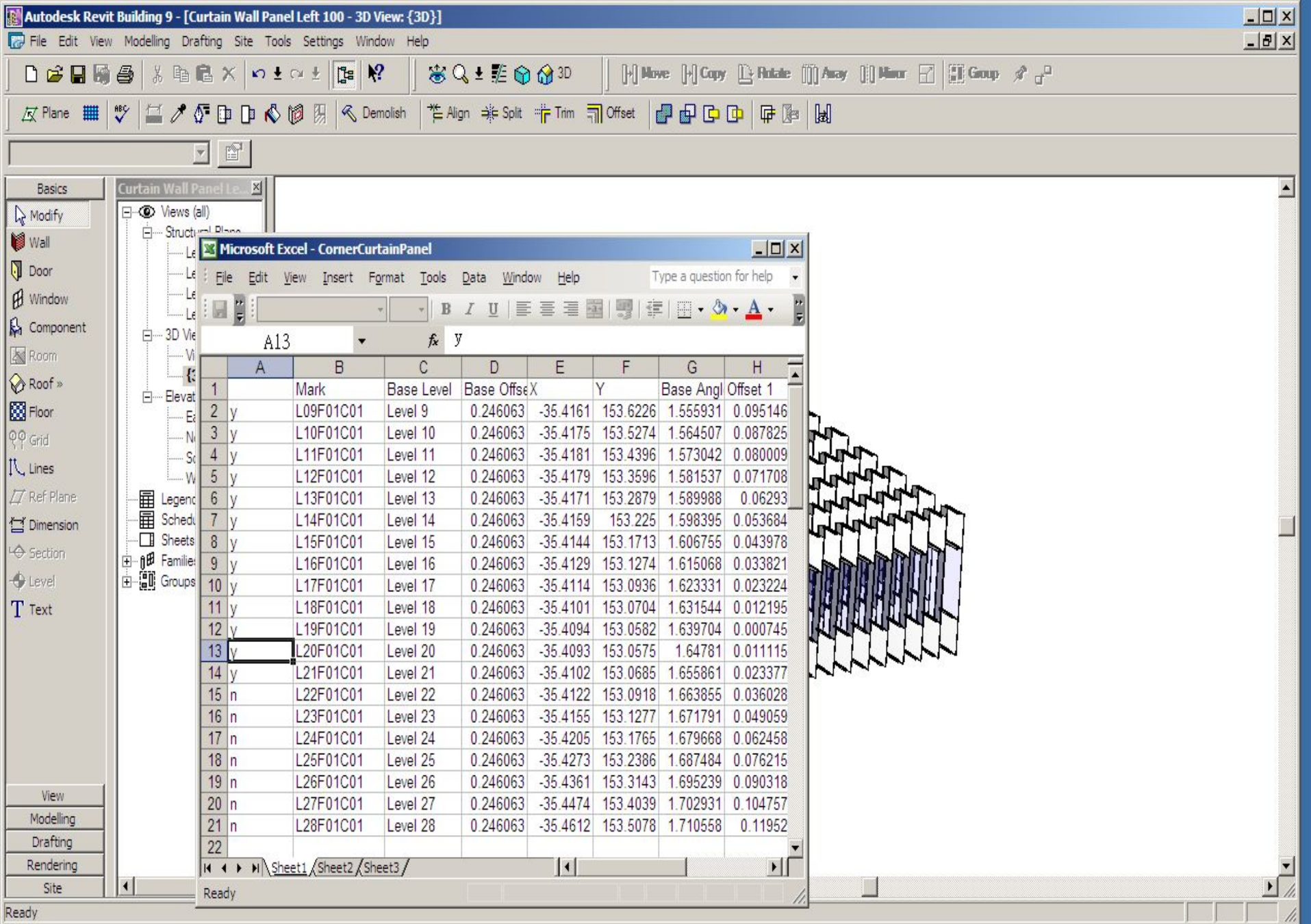
Family	Mark	Level	Width	Width Left	Width Right	Offset 1	Offset 2
Curtain Wall Panel 2	L08F01N01	Level 8	1255.67			-31.08	-41.89
Curtain Wall Panel 2	L08F01N02	Level 8	1255.67			-41.89	-52.71
Curtain Wall Panel 2	L08F01N03	Level 8	1255.67			-52.71	-63.53
Curtain Wall Panel 2	L08F01N04	Level 8	1255.67			-63.53	-74.34
Curtain Wall Panel 2	L08F01N05	Level 8	1255.67			-74.34	-85.16
Curtain Wall Panel 2	L08F01N06	Level 8	1255.67			-85.16	-95.97
Curtain Wall Panel 2	L08F01N07	Level 8	1255.67			-95.97	-106.79
Curtain Wall Panel 2	L08F01N08	Level 8	1255.67			-106.79	-117.60
Curtain Wall Panel 2	L08F01N09	Level 8	1255.67			-117.60	-117.60
Curtain Wall Panel 2	L08F03N09	Level 8	1224.13			5.31	5.66
Curtain Wall Panel 2	L08F03N10	Level 8	1224.13			5.66	6.01
Curtain Wall Panel 2	L08F03N11	Level 8	1224.13			6.01	6.36
Curtain Wall Panel 2	L09F01N01	Level 9	1255.72			-29.00	-39.77
Curtain Wall Panel 2	L09F01N02	Level 9	1255.72			-39.77	-50.54
Curtain Wall Panel 2	L09F01N03	Level 9	1255.72			-50.54	-61.31
Curtain Wall Panel 2	L09F01N04	Level 9	1255.72			-61.31	-72.07
Curtain Wall Panel 2	L09F01N05	Level 9	1255.72			-72.07	-82.84
Curtain Wall Panel 2	L09F01N06	Level 9	1255.72			-82.84	-93.61
Curtain Wall Panel 2	L09F01N07	Level 9	1255.72			-93.61	-104.38
Curtain Wall Panel 2	L09F01N08	Level 9	1255.72			-104.38	-115.15
Curtain Wall Panel 2	L09F03N09	Level 9	1224.13			0.64	0.74
Curtain Wall Panel 2	L09F03N10	Level 9	1224.13			0.74	0.84
Curtain Wall Panel 2	L09F03N11	Level 9	1224.13			0.84	0.94
Curtain Wall Panel 2	L10F01N01	Level 10	1255.77			-26.77	-37.49
Curtain Wall Panel 2	L10F01N02	Level 10	1255.77			-37.49	-48.21
Curtain Wall Panel 2	L10F01N03	Level 10	1255.77			-48.21	-58.93
Curtain Wall Panel 2	L10F01N04	Level 10	1255.77			-58.93	-69.64
Curtain Wall Panel 2	L10F01N05	Level 10	1255.77			-69.64	-80.36
Curtain Wall Panel 2	L10F01N06	Level 10	1255.77			-80.36	-91.08
Curtain Wall Panel 2	L10F01N07	Level 10	1255.77			-91.08	-101.80
Curtain Wall Panel 2	L10F01N08	Level 10	1255.77			-101.80	-112.52
Curtain Wall Panel 2	L10F03N09	Level 10	1224.13			-4.06	-4.21
Curtain Wall Panel 2	L10F03N10	Level 10	1224.13			-4.21	-4.35
Curtain Wall Panel 2	L10F03N11	Level 10	1224.13			-4.35	-4.50
Curtain Wall Panel 2	L81B1RN01	Level 81	1224.10			0.00	0.00
Curtain Wall Panel 2	L82B1RN01	Level 82	1224.10			0.00	0.00
Curtain Wall Panel 2	L83B1RN01	Level 83	1224.10			0.00	0.00
Curtain Wall Panel 2	L84B1RN01	Level 84	1224.10			0.00	0.00
Curtain Wall Panel 2: 38							
Curtain Wall Panel 3	L04F03N01	Level 4	1224.13			-1.53	-0.38
Curtain Wall Panel 3	L04F03N02	Level 4	1224.13			-0.38	0.76
Curtain Wall Panel 3	L04F03N03	Level 4	1224.13			0.76	1.91
Curtain Wall Panel 3	L04F03N05	Level 4	1224.13			12.20	13.34
Curtain Wall Panel 3	L04F03N06	Level 4	1224.13			12.20	13.34
Curtain Wall Panel 3	L04F04N01	Level 4	1200.00			-137.36	-137.36
Curtain Wall Panel 3	L04F04N02	Level 4	1200.00			-137.36	-137.38
Curtain Wall Panel 3	L04F04N03	Level 4	1200.00			-137.38	-137.40
Curtain Wall Panel 3	L04F04N04	Level 4	1200.00			-137.40	-137.42
Curtain Wall Panel 3	L04F04N05	Level 4	1200.00			-137.42	-137.45
Curtain Wall Panel 3	L04F04N06	Level 4	1200.00			-137.45	-137.47
Curtain Wall Panel 3	L04F04N07	Level 4	1200.00			-137.47	-137.49

Ready

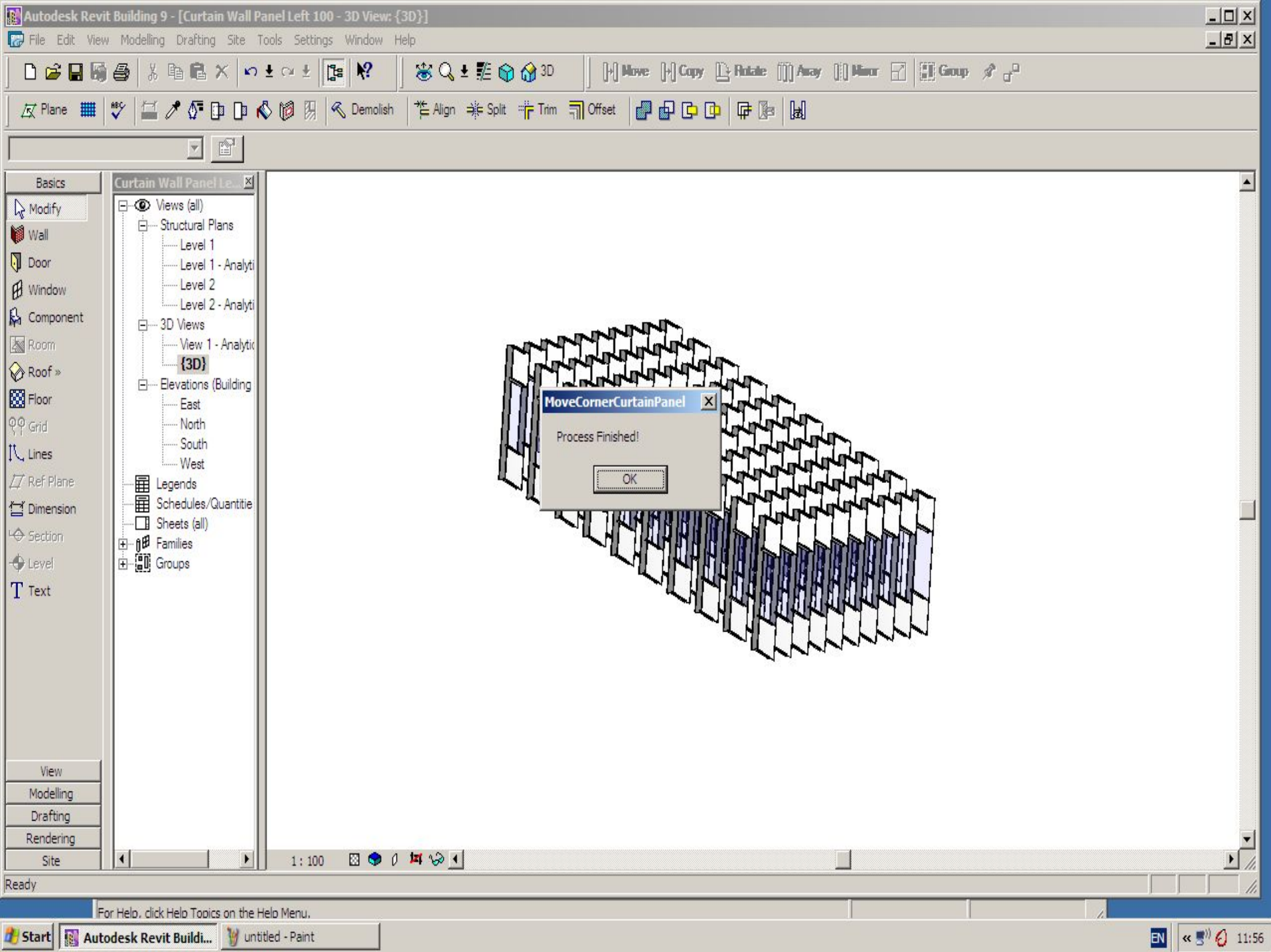
Ref Plane	Level 20	Sliding Door	L71B05D12	Level 71	2550.00		0.00
Dimension	Level 30	Sliding Door	L71B05D15	Level 71	2550.00		0.00
Section	Level 40	Sliding Door	L72B01D02	Level 72	2400.00		0.00
Level	Level 50	Sliding Door	L72B02D02	Level 72	2500.00		0.00
Framing Elevati	Level 60	Sliding Door	L72B04D01	Level 72	1800.00		0.00
Text	Level 65	Sliding Door	L72B05D03	Level 72	2550.00		0.00
	Level 70	Sliding Door	L72B05D05	Level 72	2550.00		0.00
	Level 75	Sliding Door	L72B05D08	Level 72	2550.00		0.00
	3D Views	Sliding Door	L72B05D10	Level 72	2550.00		0.00
	3D View 1	Sliding Door	L72B05D12	Level 72	2550.00		0.00
	3D View 2	Sliding Door	L72B05D15	Level 72	2550.00		0.00
	3D View 3	Sliding Door	L73B01D02	Level 73	2400.00		0.00
	3D View 4	Sliding Door	L73B02D02	Level 73	2500.00		0.00
	3D View 5	Sliding Door	L73B04D01	Level 73	1700.00		0.00
	3D View 6	Sliding Door	L73B05D03	Level 73	2550.00		0.00
	Copy of 3D V	Sliding Door	L73B05D05	Level 73	2550.00		0.00
	View 1 - Ana	Sliding Door	L73B05D08	Level 73	2550.00		0.00
	{3D}	Sliding Door	L73B05D10	Level 73	2550.00		0.00
	Elevations (Build	Sliding Door	L73B05D12	Level 73	2550.00		0.00
	East	Sliding Door	L73B05D15	Level 73	2550.00		0.00
	North	Sliding Door	L74B01D02	Level 74	2400.00		0.00
	South	Sliding Door	L74B02D02	Level 74	2500.00		0.00
	West	Sliding Door	L74B04D01	Level 74	1600.00		0.00
	Sections (Building	Sliding Door	L74B05D03	Level 74	2550.00		0.00
	Section 1	Sliding Door	L74B05D05	Level 74	2550.00		0.00
	Section 2	Sliding Door	L74B05D08	Level 74	2550.00		0.00
	Section 3	Sliding Door	L74B05D10	Level 74	2550.00		0.00
	Legends	Sliding Door	L74B05D12	Level 74	2550.00		0.00
	Schedules/Quan	Sliding Door	L74B05D15	Level 74	2550.00		0.00
	Multi-Category S	Sliding Door	L75B01D02	Level 75	2400.00		0.00
	Multi-Category S	Sliding Door	L75B02D02	Level 75	2500.00		0.00
	Sheets (all)	Sliding Door	L76B01D02	Level 76	2400.00		0.00
	Families	Sliding Door	L76B02D02	Level 76	2500.00		0.00
	Annotation Symb	Sliding Door	L77B01D02	Level 77	2400.00		0.00
	Ceilings	Sliding Door	L77B02D01	Level 77	2426.17		0.00
	Curtain Panels	Sliding Door	L78B01D02	Level 78	2400.00		0.00
	Curtain Systems	Sliding Door	L78B02D01	Level 78	2203.01		0.00
	Curtain Wall Mul	Sliding Door	L79B01D02	Level 79	2400.00		0.00
	Detail Items	Sliding Door	L79B02D01	Level 79	1974.15		0.00
	Doors	Sliding Door: 649					
	Floors	Sliding Door to Replace CW Pan	L10F01N10	Level 10	1255.77		-123.24
	Furniture	Sliding Door to Replace CW Panel: 1					
		Grand total: 9740					

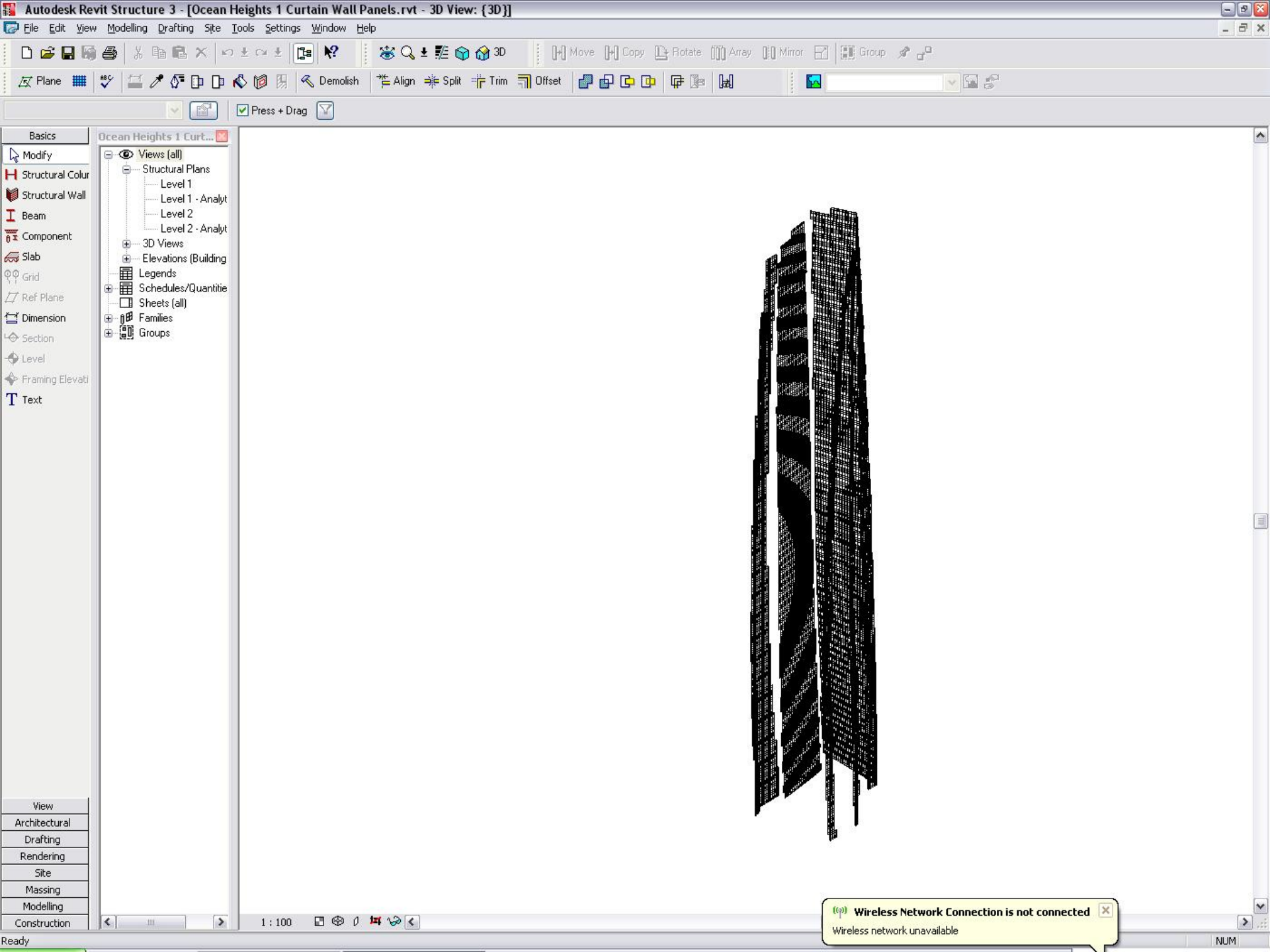














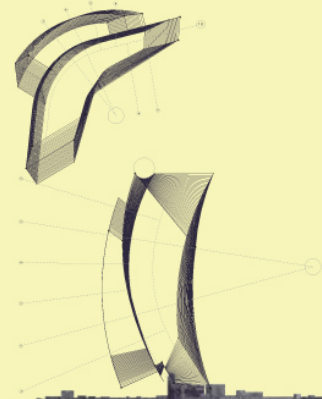
## Abu Dhabi Dancing Towers

Located in the heart of Abu Dhabi, Dancing Towers was designed to appropriately fit its surrounding neighbors in scale.

The challenge was how to achieve this when the project was only 70,000 square meters and adjacent properties were relatively small, averaging 900 square-meter floor plates. Two slender towers as opposed to one singular tower was the first step, but the site itself was constrained, forcing a close proximity between the two buildings.

This site constraint is intensified in achieving a viable connective retail podium between the commercial and residential towers, drop-offs to the lobbies and access to supporting functions. The buildings were placed deliberately to maximize the uses down below.

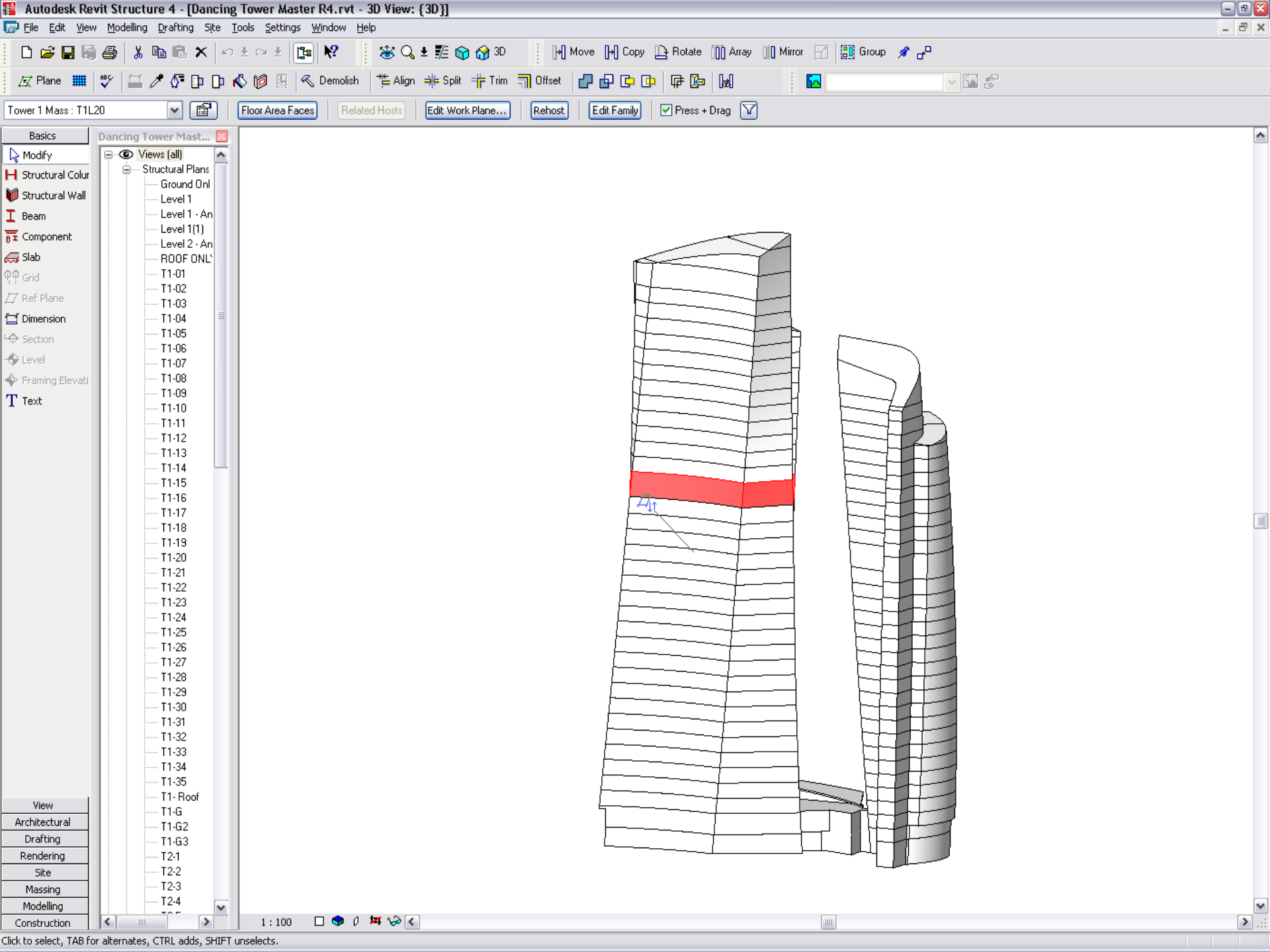
However, the two towers quickly lean, rotate, bend and warp to respond to each other, the adjacent sites and ultimately the view to the ocean at their horizon. These two figures fluidly respond to each other, dynamically engaged and flowing – and ultimately tied together in a passionate dance •



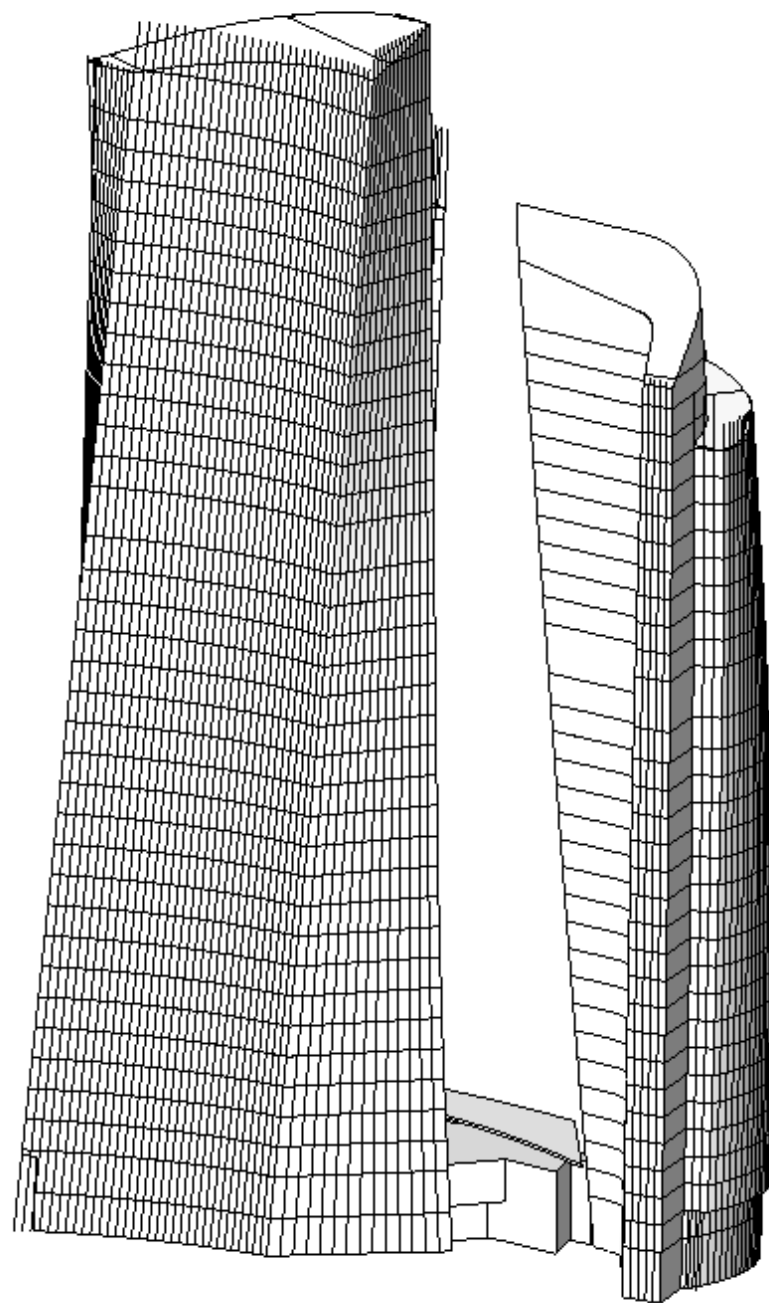
Program Mixed Use Site Area 4,180 sqm  
Floor Area 44,235 sqm Building Height 160 m



Abu Dhabi **Dancing Towers**



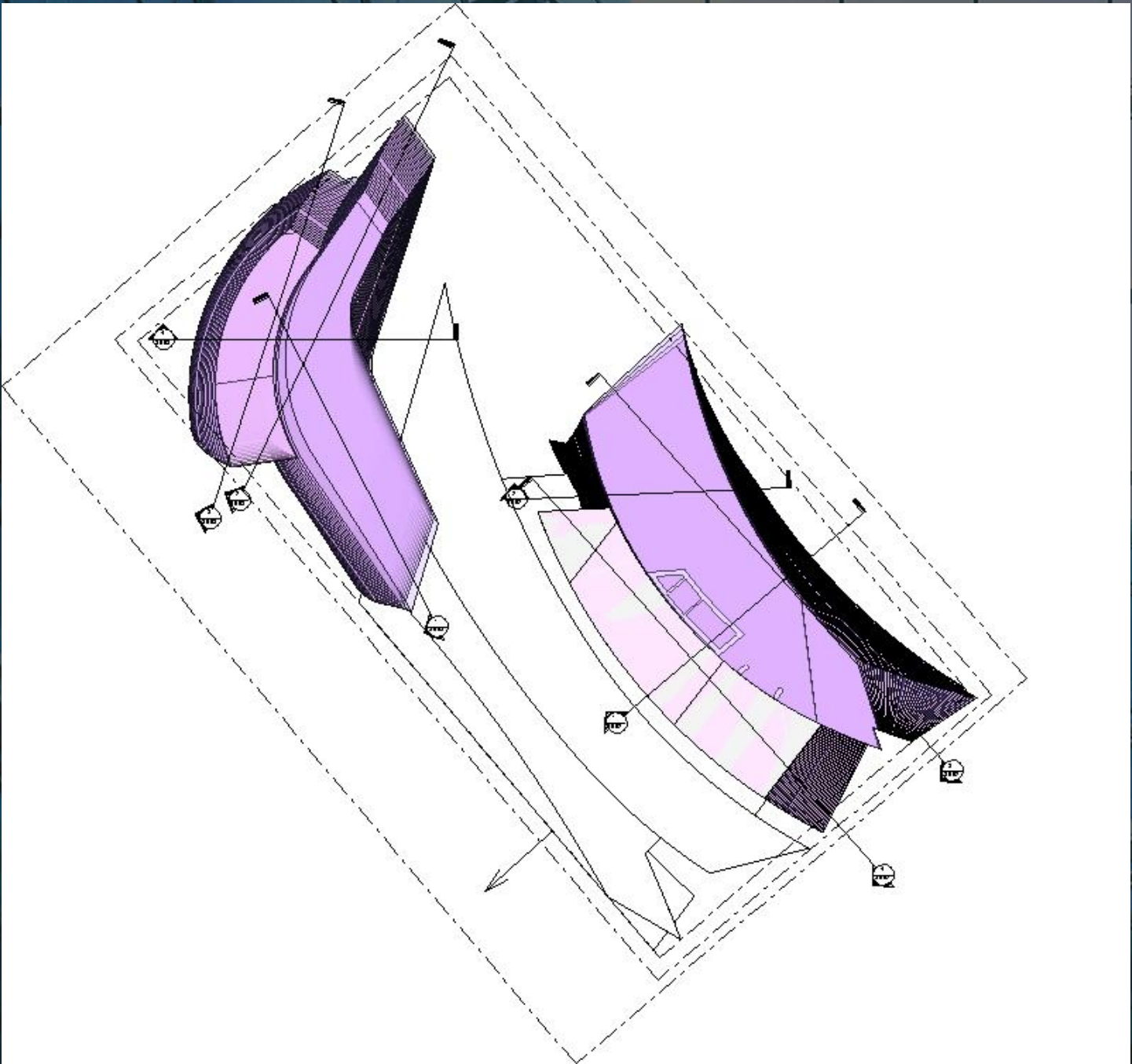






2006/08/25 18:19





Program: Residential, Site Area 7,007 sqm  
 Floor Area 90,208 sqm, Building Height 225 m

## Abu Dhabi Empire Tower

Empire Tower was challenged through a client request of not "pushing the limits" too far. The concern is that the residential project was located in the middle of a master plan filled with potential icons. The design standardizes the units to accommodate the client request but manipulates the section to develop a very dynamic solution, which holds its own amidst the visual clutter of its neighbors. This was deemed crucial to the financial viability of this project, which is dependent on pre-sales within a highly competitive market.

The design maximizes the tower's presence on the street, with vertical layers spreading out to the property lines. The building then bends back away from the street across from a large commercial tower, allowing for an enlarged view corridor between the central park of the community and the sea, one block away. The splayed vertical layers converge and rise up before bending forward together, as the 230-meter tower extends into the sky – maximizing its views between the park and the sea •



Initial Massing



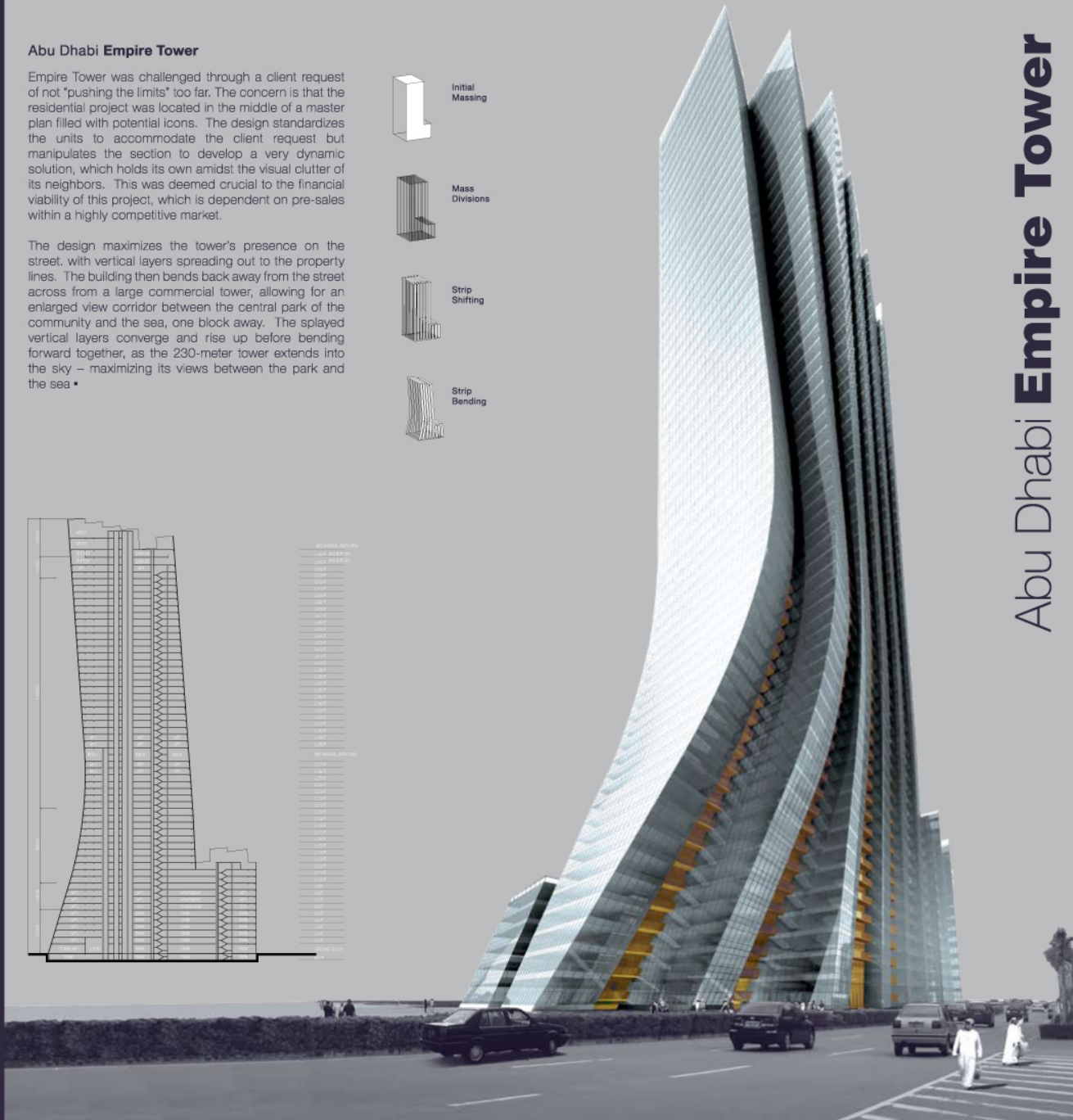
Mass Divisions



Strip Shifting

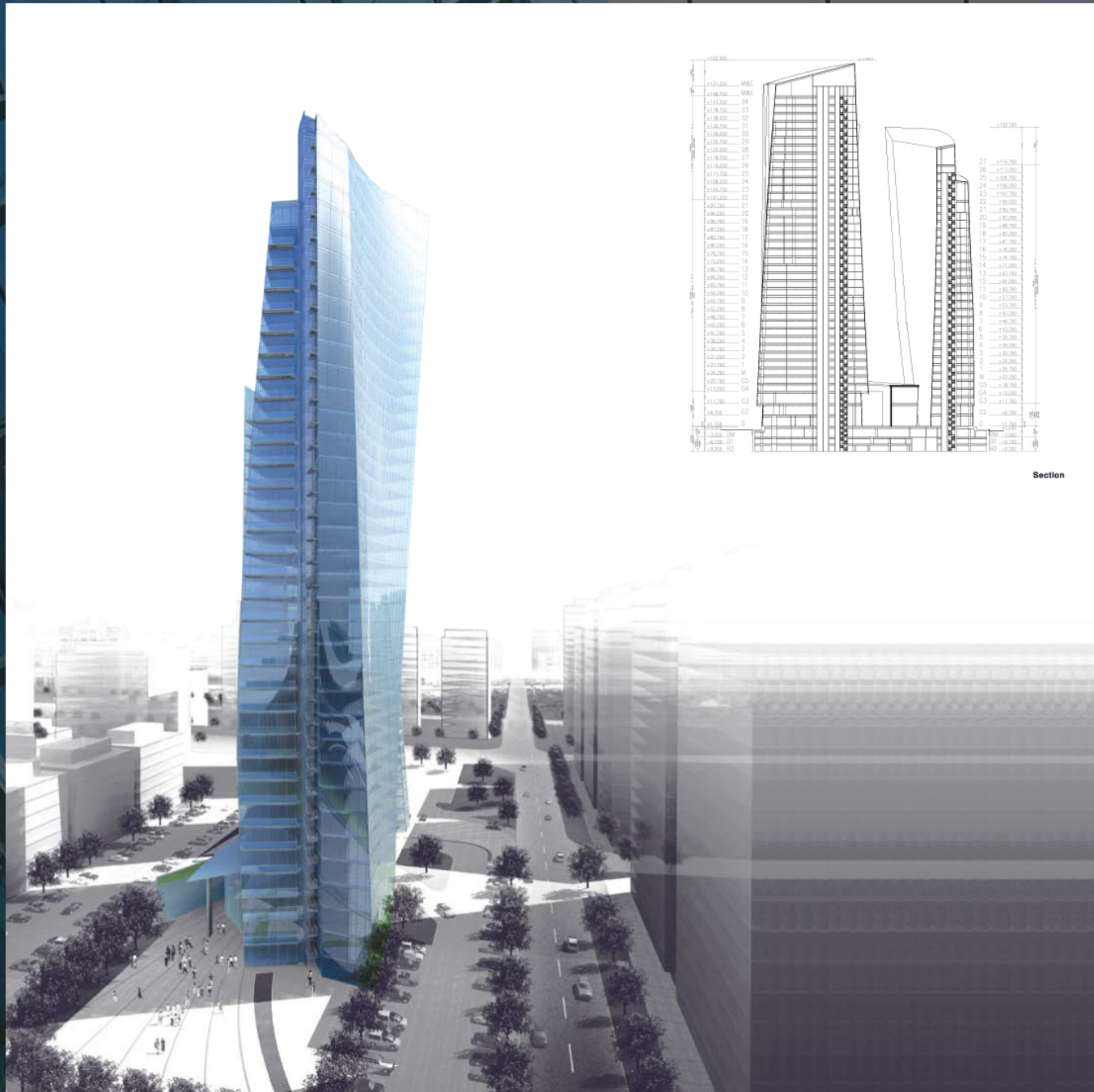


Strip Bending



## Abu Dhabi Empire Tower



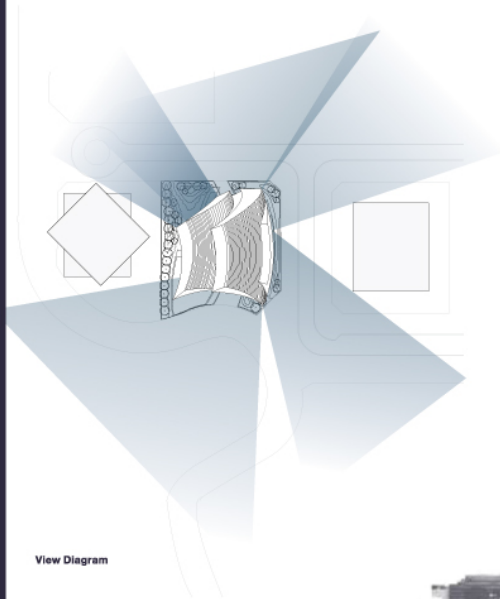


Program Residential Site Area 3,443sqm  
Floor Area 197,975 sqm Building Height 460 m

## Dubai Ocean Heights Two

Ocean Heights Two is also located in Dubai Marina, UAE, along with its sister project, Ocean Heights One. At 460 meters in height and 105 floors, it will be the tallest tower in its vicinity. However, unlike its predecessor, the requirements for more modulated units up to the 60th floor, forced a different approach while intending to maintain the spirit of its sister.

The first 60<sup>th</sup> floors of the tower are intended to be service apartments, which in order to be marketable, needed to have the majority of units standardized. The curved shape of the tower improves views past its densely located neighbors. The playfulness of this tower was concentrated into the two most visible faces, allowing units to bend up the tower in two blades. These blades were still modulated up to the 60<sup>th</sup> floor before the tight restrictions of unit area fluctuations become more relaxed. At this point, the modules drop off and the blades continue, tapering and bending into the sky ▪

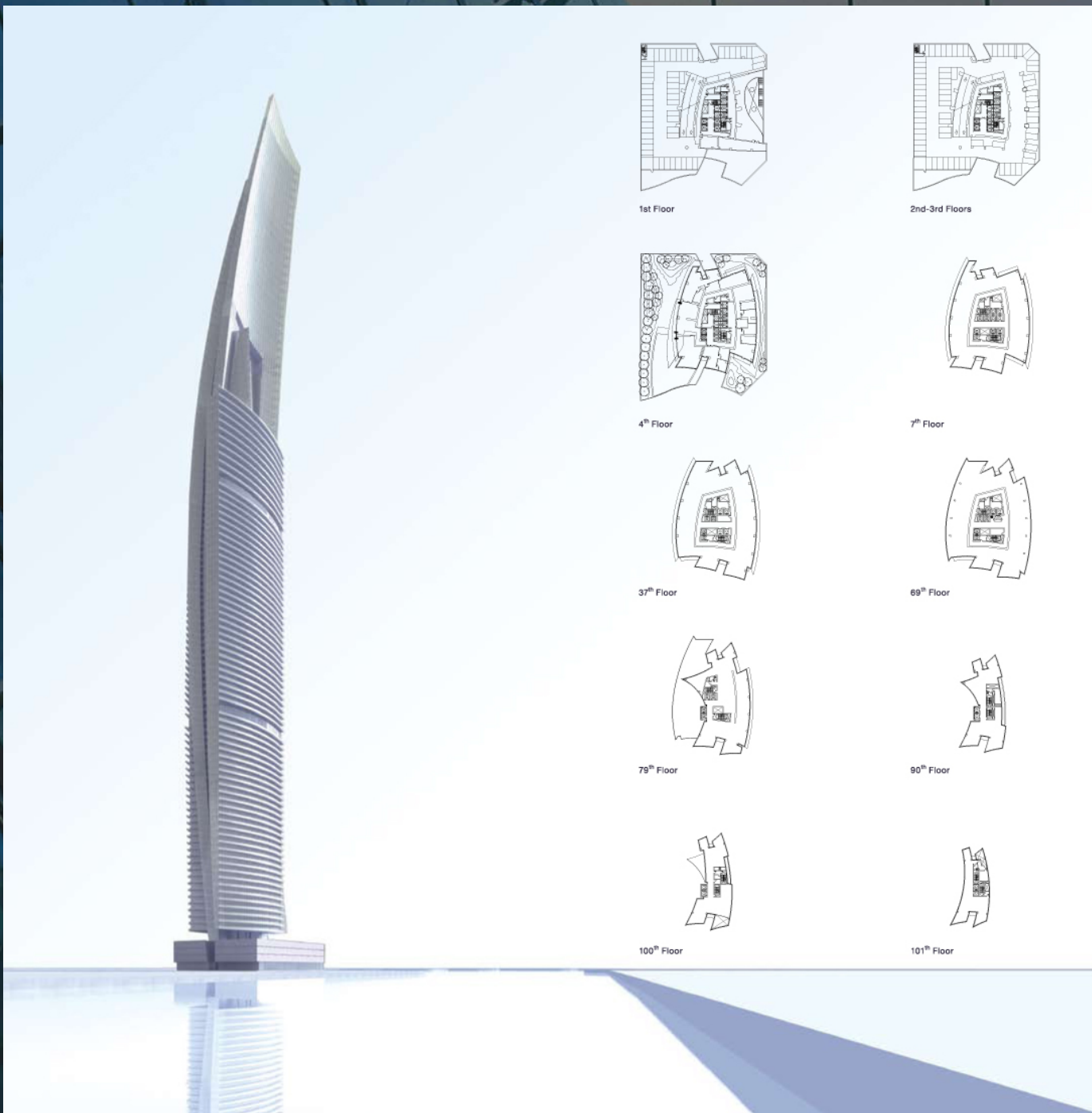


View Diagram



Dubai Ocean Heights Two





1st Floor



2nd-3rd Floors



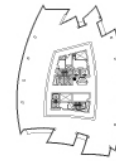
4th Floor



7th Floor



37th Floor



69th Floor



79th Floor



90th Floor



100th Floor



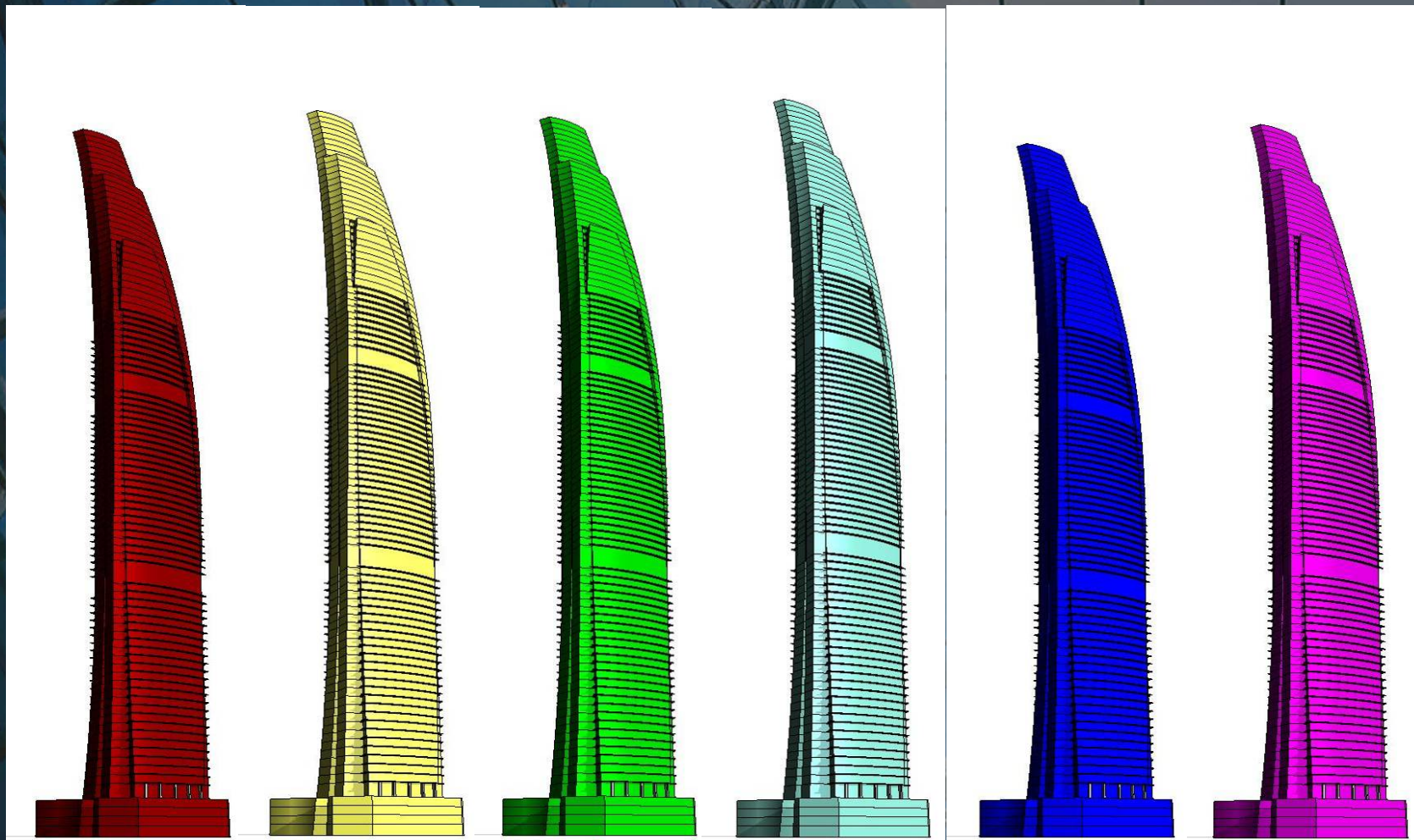
101st Floor

## Ocean Heights II



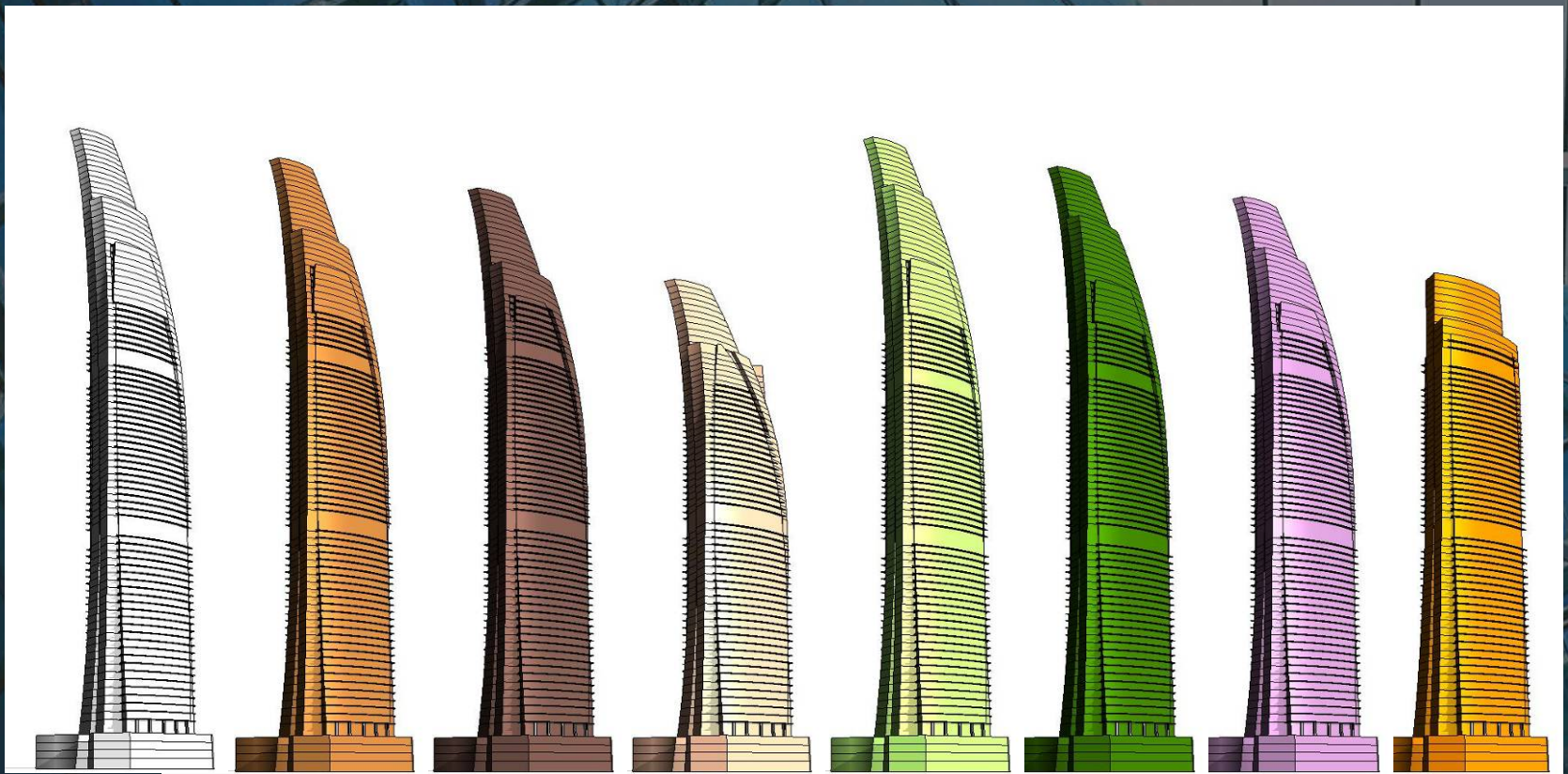


## Ocean Heights II – Options





## Ocean Heights II – Options







Thank You...