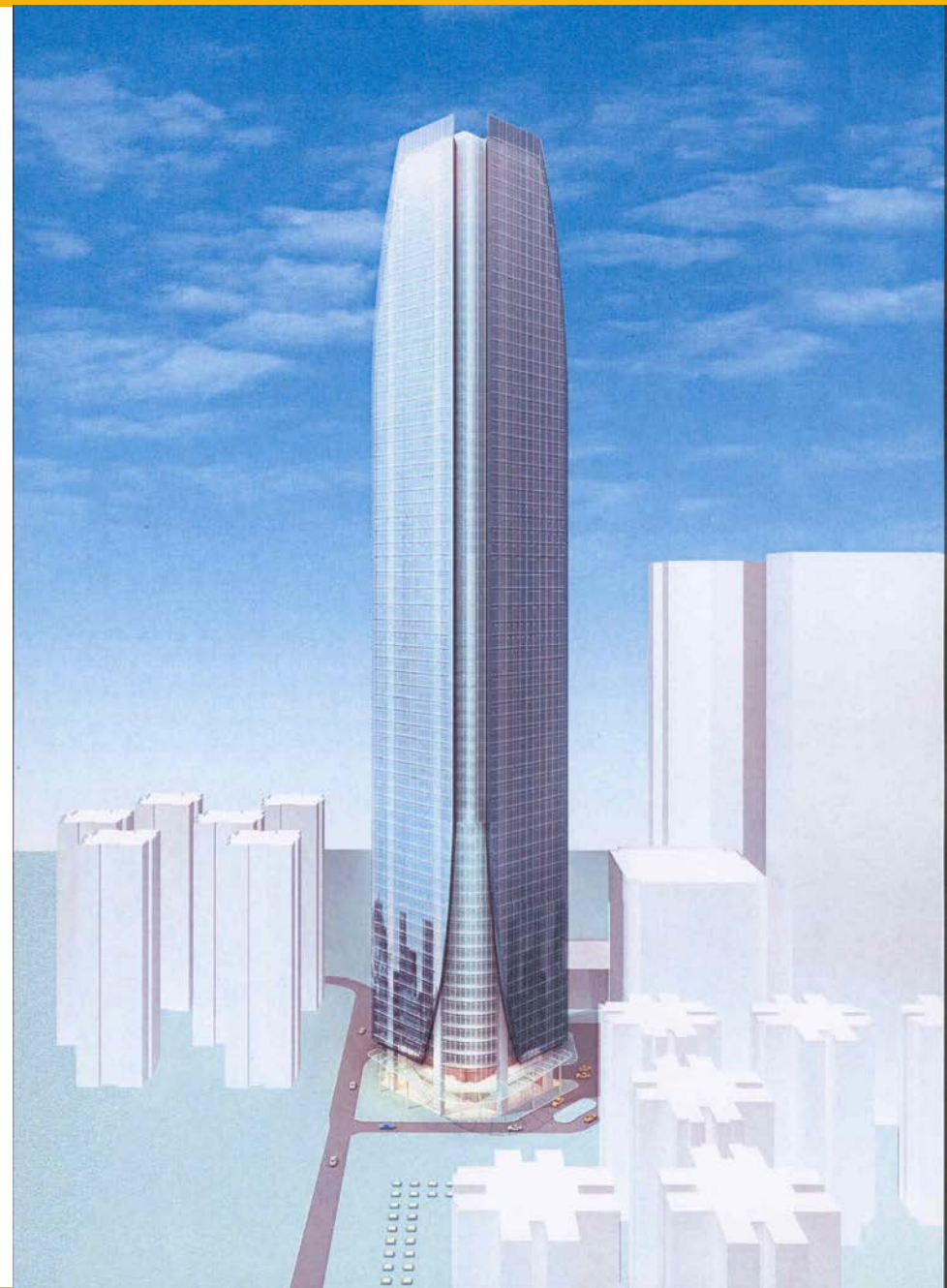


One Island East



1 Feb 2007

Contents

Pilot Project – One Island East

Why BIM

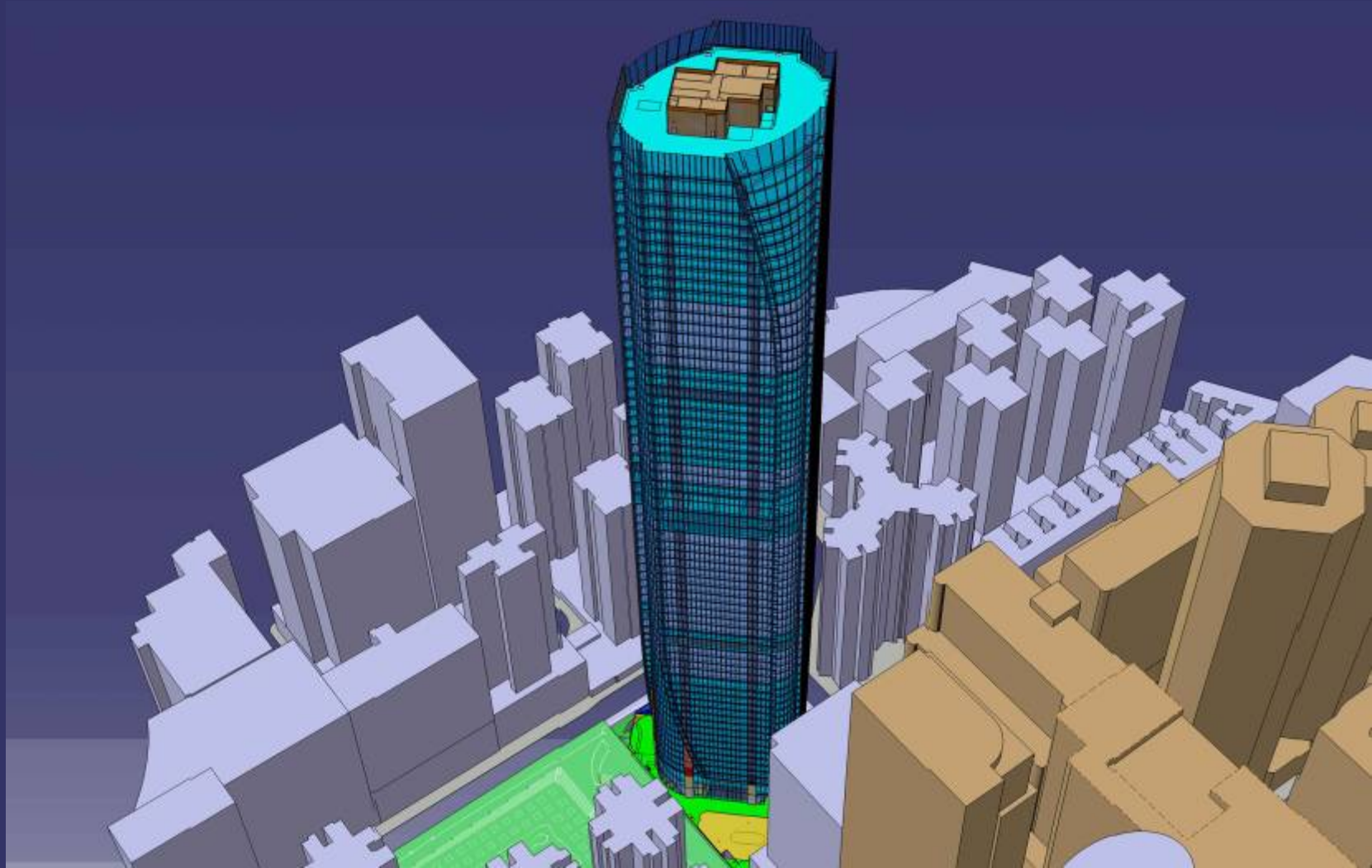
Application of BIM in IsE

The Future

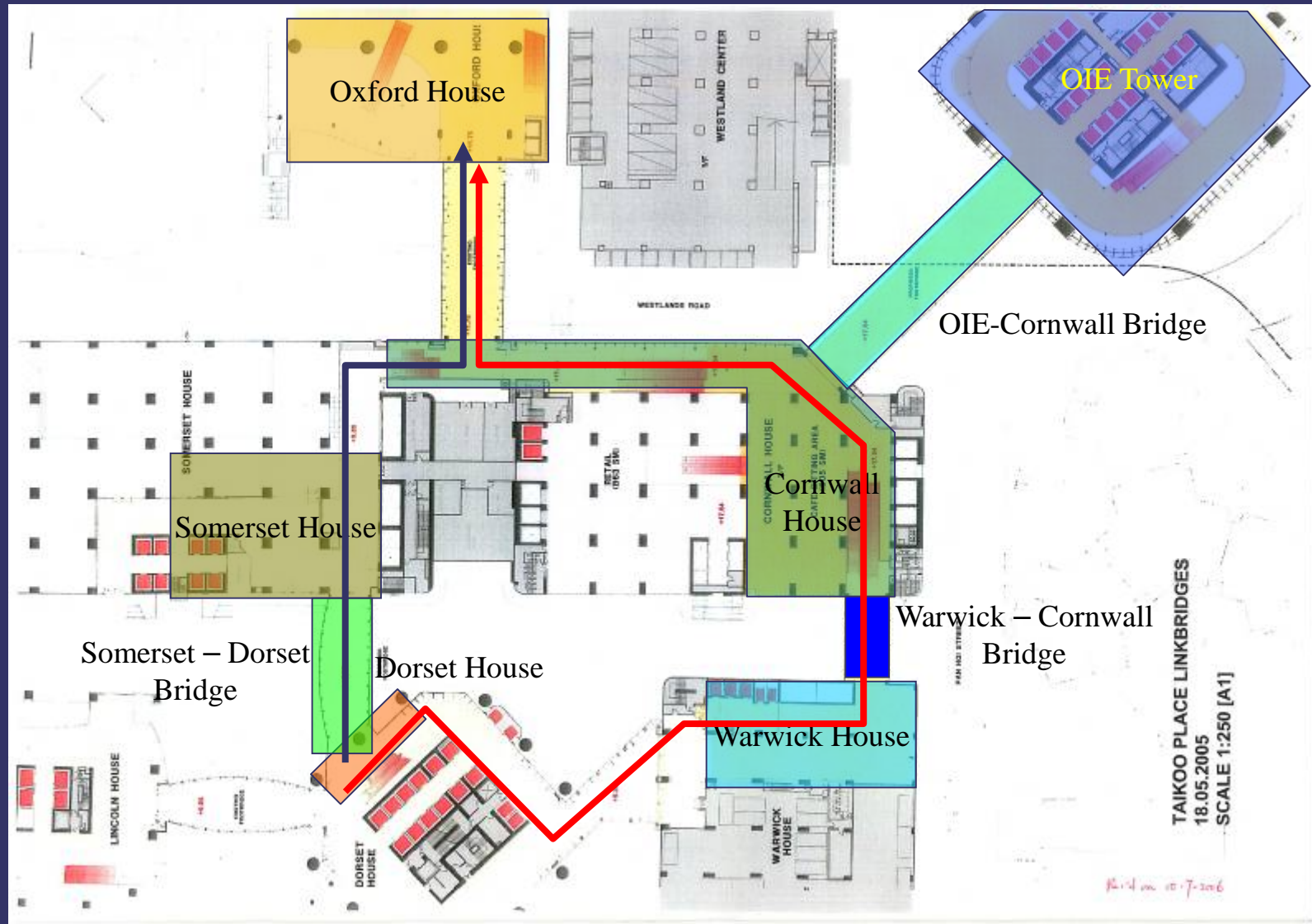
Area of Improvement

Project Information

- Location

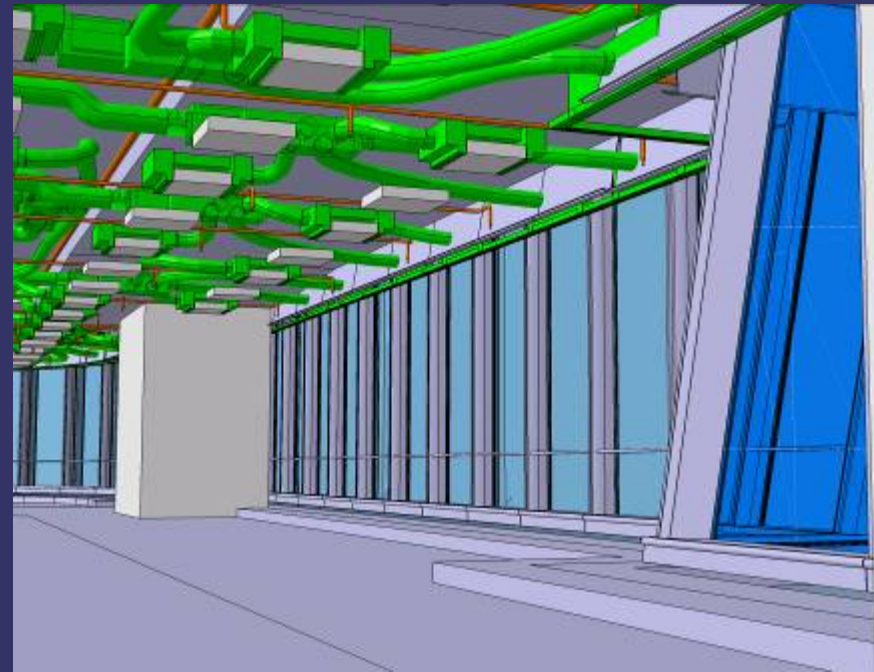


Project Information



Description of Work

- Construction of Basement Raft, Footings, Substructure and Basement
- Building Structure with Reinforced Concrete Corewall, Post-tensioned Concrete Slab
- Pre-cast Edge Beams and Precast Staircases
- Curtain Wall & External Cladding
- Internal Finishes
- Building Services Installation
- Footbridge Connecting OIE and Cornwall House

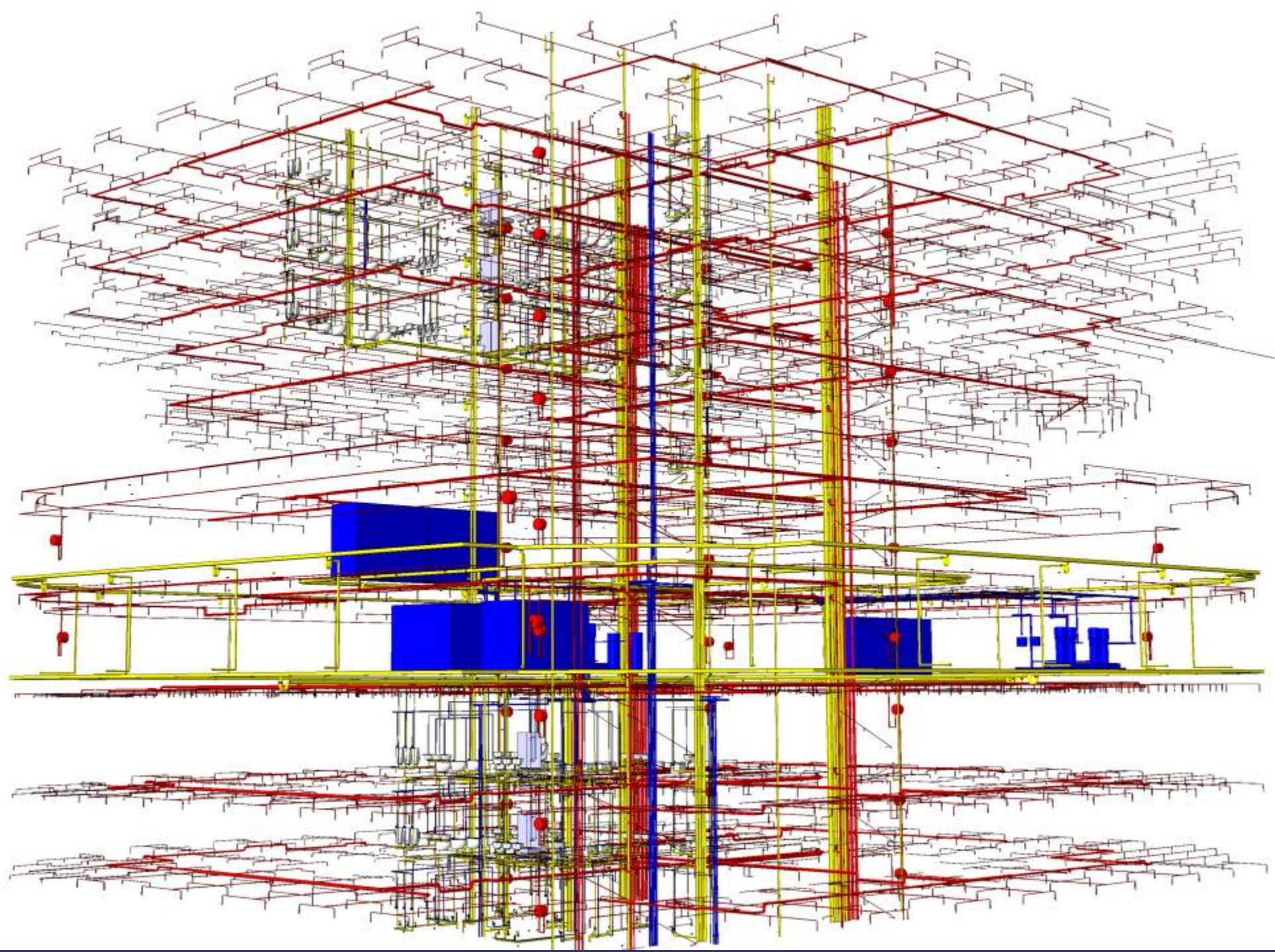


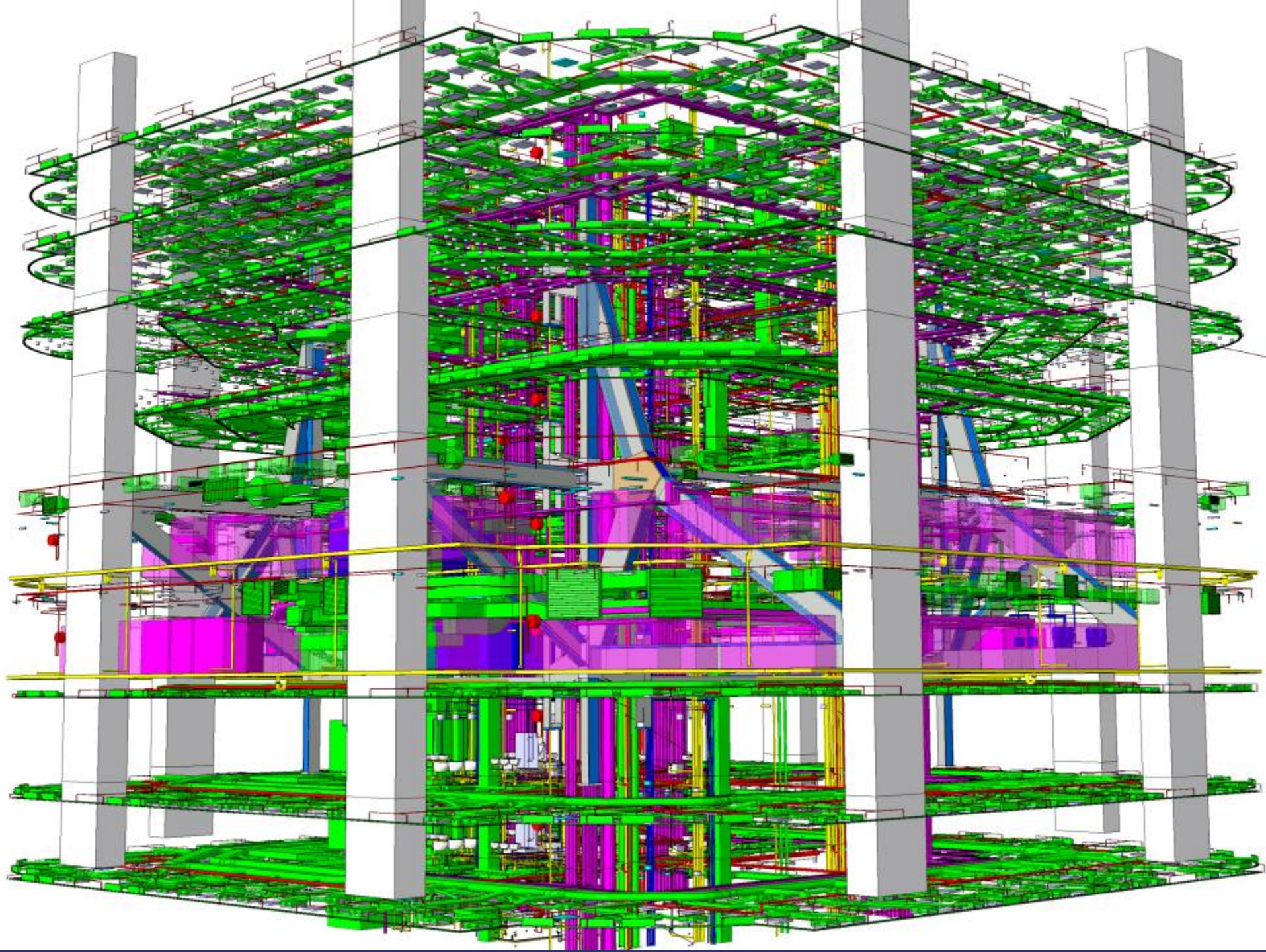
Team Members

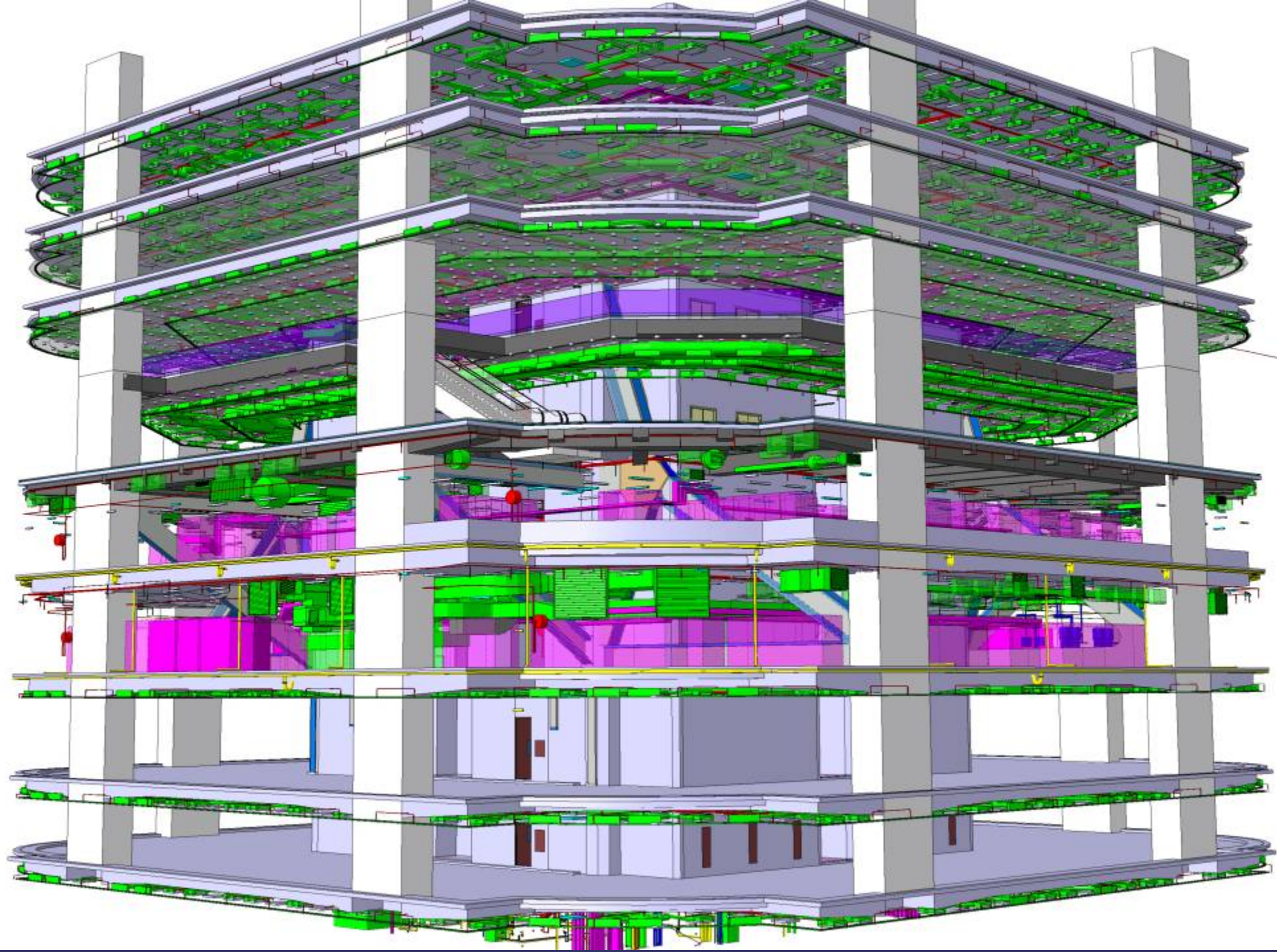
- Client – Cherry Blossom International Ltd. (Swire Properties Limited)
- Architect – Wong & Ouyang (HK) Ltd.
- Structural Engineer – Ove Arup & Partners Hong Kong Ltd.
- M&E Engineer – Meinhardt (M&E) Ltd.
- BIM Consultant – Gehry Technology (Asia) Ltd
- Main Contractor – Gammon Construction Limited
- M/E Package Contractor – Balfour Beatty E&M Ltd.

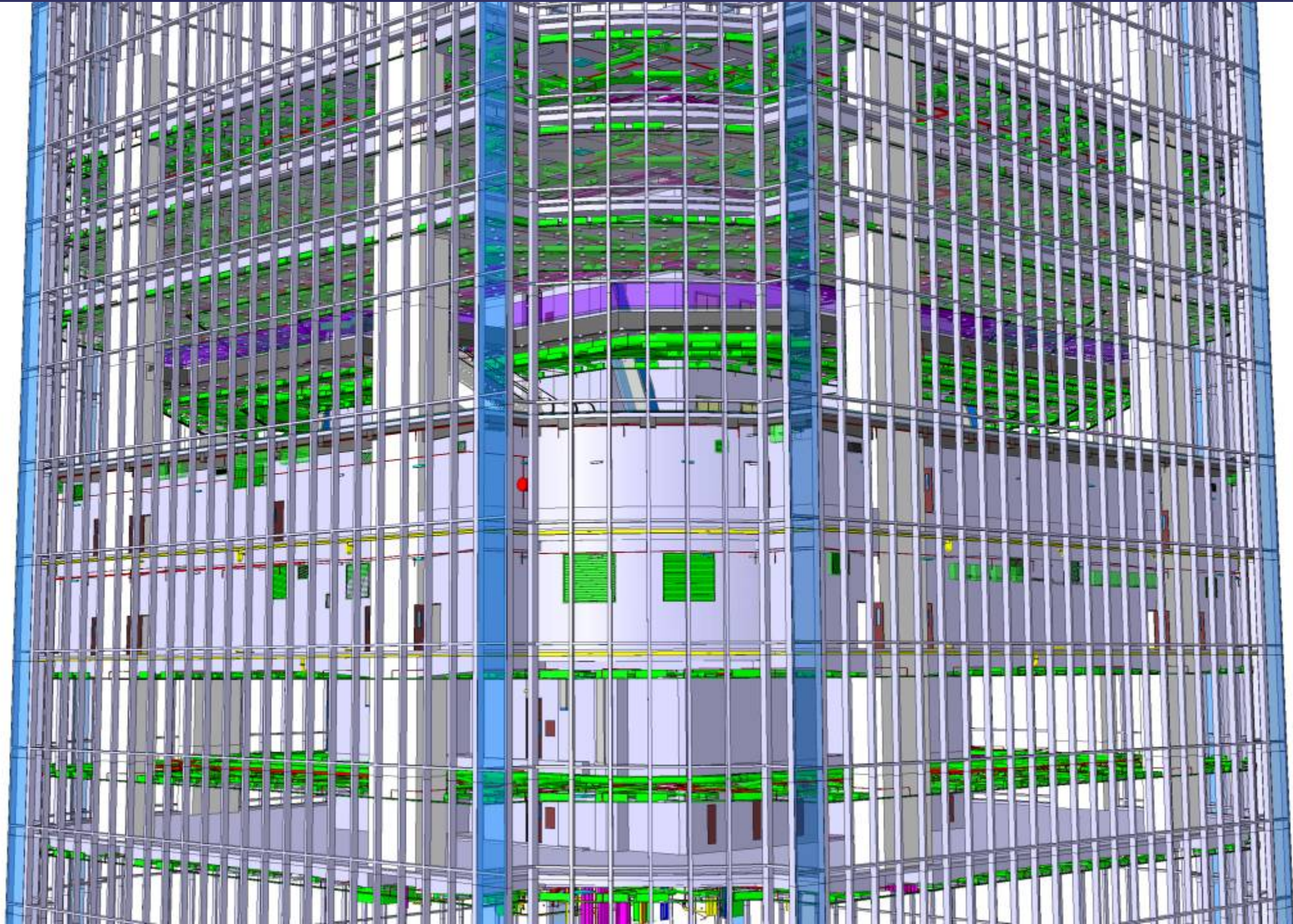
Schedule for BIM

- Feb 2005 Start 3D modeling of BIM
- May 2005 Tender of Main Contract – Stage 1
- Sep 2005 Tender of Main Contract – Stage 2
- Mar 2006 Commence Main Contract by GCL
- Jan 2007 Tower half-concreted
- Mar 2008 Occupation Permit









Why BIM?

18.08.2006

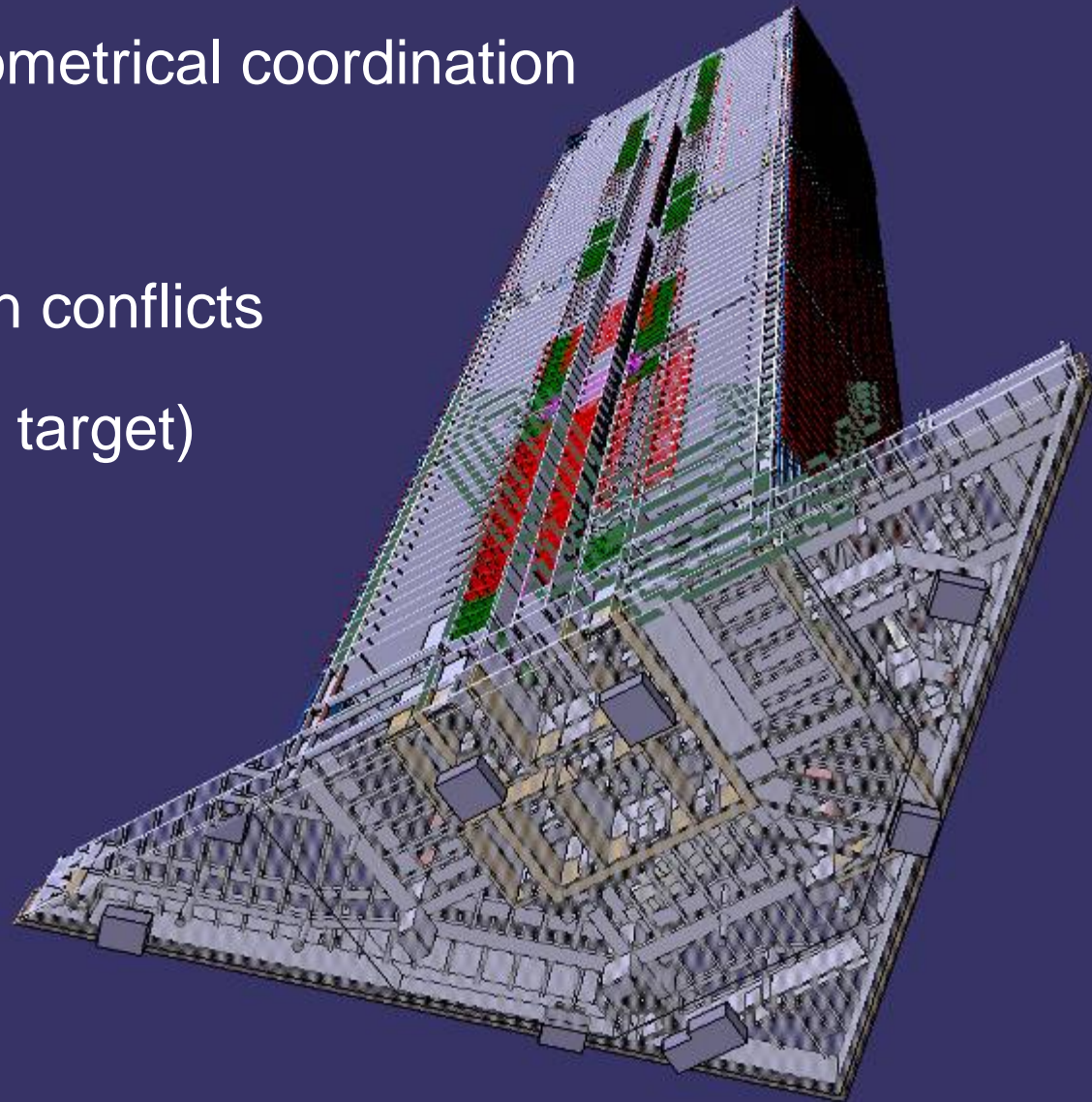
Why BIM

- Architect / Designer are usually asked to construct 3D model to describe design (visualization)
- Architect / Designer usually build up working models to visualize space



Why BIM

- Comprehensive 3D geometrical coordination
- Detail design accuracy
- Report clash and design conflicts
- Waste prevention (EHS target)
- Risk reduction



Application of BIM

- Design Coordination
 - Single platform for all consultants
 - Better communication through 3D visualization
 - Minimize document discrepancies
 - Eliminate double handling of design data in later stages

Application of BIM

- Clash detection
 - resolve design conflicts in early stages
 - Improve quality of work
 - Mitigate risks for future construction

Application of BIM

- Automatic BQ Generation
 - Reduce human error
 - Instant option study
 - Shorten time for tender preparation

Application of BIM

- Conventional Bidding

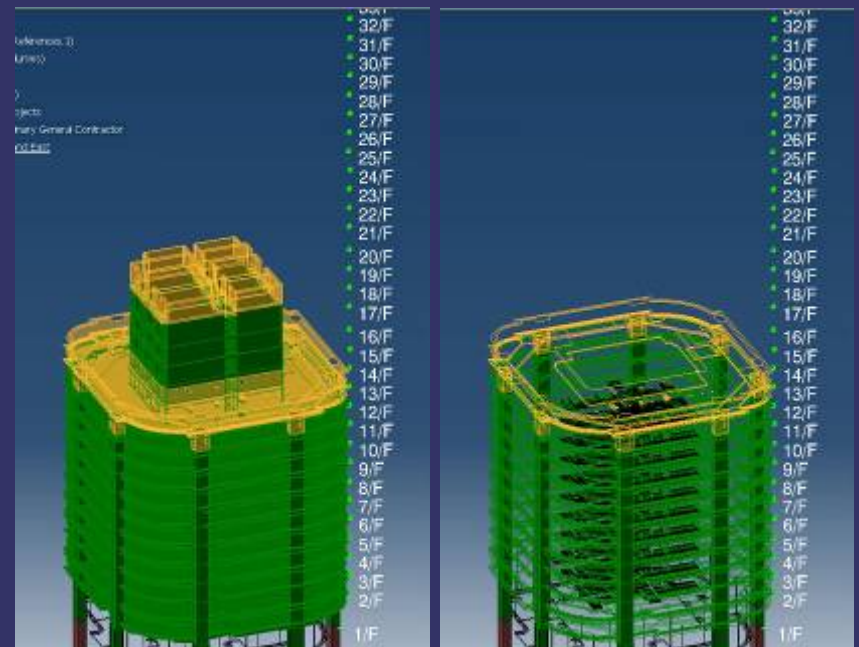


- Paperless Bidding



The Future

- Virtual Construction
- Use of model with Delmia
- Verify construction programme on unconventional designs



The Future

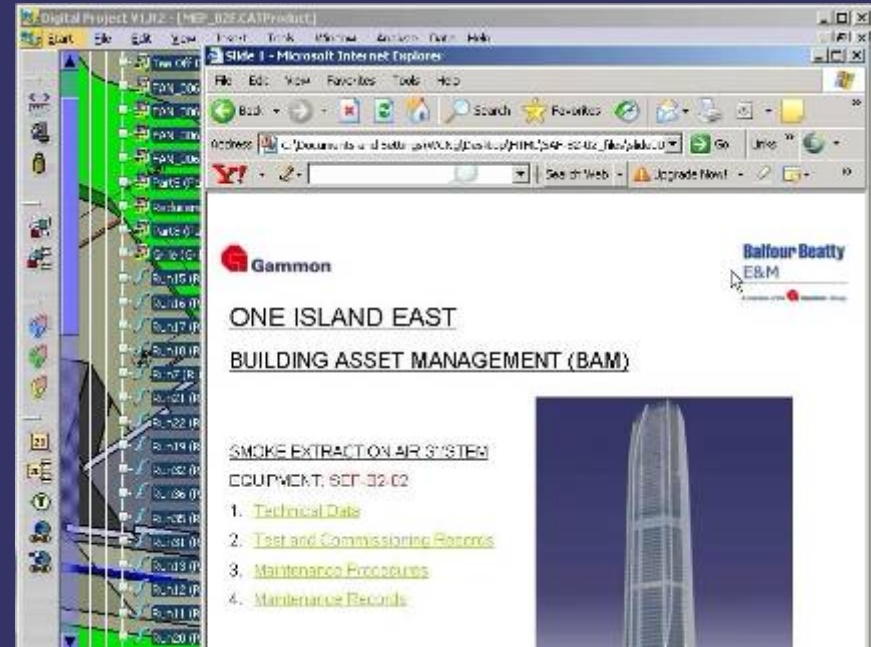
- Marketing
- Interactive Presentation
- Promote Communication



Digital Project
2006 All rights reserved

The Future

- Facility Management
- Building Asset Management



Areas of Concern

- Negative players to face new ideas
- Whole team to build and use single model
- Cost
- Hardware support
- Industry-wide BIM platform
- Government support

END OF PRESENTATION

THANK YOU

