



Career Talk Workplace Visit

21 November 2005

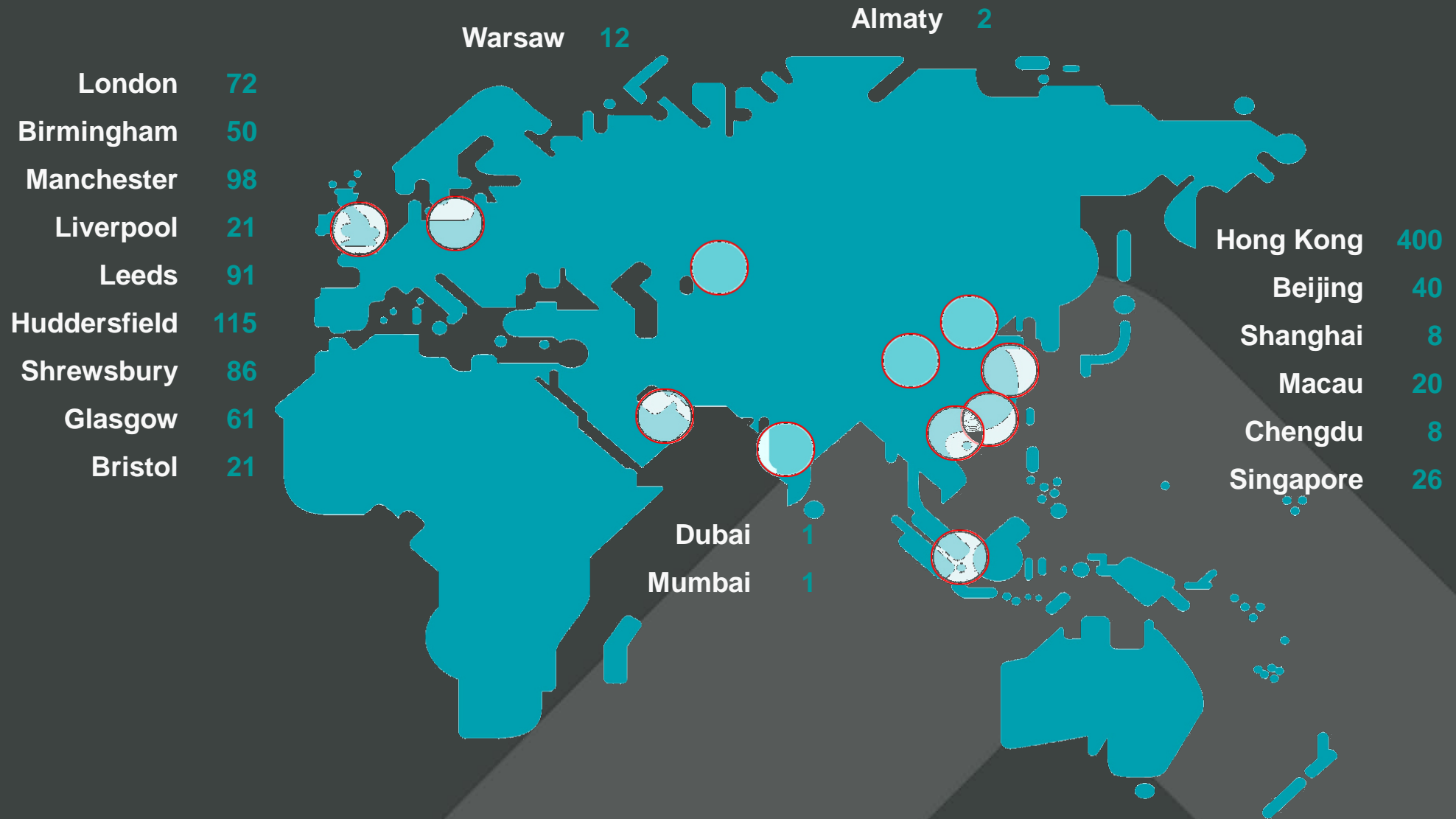


Contents

- 01** Aedas Overview
- 02** Aedas Product & Services
- 03** Working in Aedas
- 04** Study Life
- 05** Q&A Session



AEDAS OVERVIEW



Aedas have over 1,100 people working from 19 offices.



bd World Architecture 2005

2005 Edition

2005 completions



Above: The second residential phase of a major project in Beijing, China, completed in 2005. **Below:** A modern building in Beijing, China, completed in 2005.

year, with a number of completions and the progression of several large-scale schemes, including one in Wuhan and another in Shanghai. There will be several more in the pipeline, and the firm is also planning to build a series of smaller buildings in the region.

After years of being in the region, the firm is now starting to build in the region. The first building in the region is a 10-story office building in Beijing, China. The firm is also planning to build a series of smaller buildings in the region.

The firm is also planning to build a series of smaller buildings in the region. The first building in the region is a 10-story office building in Beijing, China. The firm is also planning to build a series of smaller buildings in the region.

2005 completions



Above: The second residential phase of a major project in Beijing, China, completed in 2005. **Below:** A modern building in Beijing, China, completed in 2005.

year, with a number of completions and the progression of several large-scale schemes, including one in Wuhan and another in Shanghai. There will be several more in the pipeline, and the firm is also planning to build a series of smaller buildings in the region.

After years of being in the region, the firm is now starting to build in the region. The first building in the region is a 10-story office building in Beijing, China. The firm is also planning to build a series of smaller buildings in the region.

The firm is also planning to build a series of smaller buildings in the region. The first building in the region is a 10-story office building in Beijing, China. The firm is also planning to build a series of smaller buildings in the region.

World's largest practices

2005 Rank	2004 Rank	Practice name	Country	Main type	Fee revenue (\$ mil)	Fee revenue (\$ mil)
1	1	HKS	USA	M	330	30.00
2	2	Skidmore, OWing, Merrill & Partners	USA	M	320	28.00
3	3	Skidmore, OWing, Merrill & Partners	USA	M	310	27.00
4	4	Skidmore, OWing, Merrill & Partners	USA	M	300	26.00
5	5	Skidmore, OWing, Merrill & Partners	USA	M	290	25.00
6	6	Skidmore, OWing, Merrill & Partners	USA	M	280	24.00
7	7	Skidmore, OWing, Merrill & Partners	USA	M	270	23.00
8	8	Skidmore, OWing, Merrill & Partners	USA	M	260	22.00
9	9	Skidmore, OWing, Merrill & Partners	USA	M	250	21.00
10	10	Skidmore, OWing, Merrill & Partners	USA	M	240	20.00

Top 10 charts

Global regions	Rank	Company	Country	Regional income (\$ mil)
Central and South America	1	HKS	USA	3.2
Central and South America	2	HKS	USA	3.1
Central and South America	3	HKS	USA	3.0
Central and South America	4	HKS	USA	2.9
Central and South America	5	HKS	USA	2.8
Central and South America	6	HKS	USA	2.7
Central and South America	7	HKS	USA	2.6
Central and South America	8	HKS	USA	2.5
Central and South America	9	HKS	USA	2.4
Central and South America	10	HKS	USA	2.3

Global regions	Rank	Company	Country	Regional income (\$ mil)
Central and Eastern Europe	1	HKS	USA	3.2
Central and Eastern Europe	2	HKS	USA	3.1
Central and Eastern Europe	3	HKS	USA	3.0
Central and Eastern Europe	4	HKS	USA	2.9
Central and Eastern Europe	5	HKS	USA	2.8
Central and Eastern Europe	6	HKS	USA	2.7
Central and Eastern Europe	7	HKS	USA	2.6
Central and Eastern Europe	8	HKS	USA	2.5
Central and Eastern Europe	9	HKS	USA	2.4
Central and Eastern Europe	10	HKS	USA	2.3



HONG KONG 1982



BEIJING 2002



SHANGHAI 2004



SINGAPORE 1995



MACAU 2004



400 staff led by 14 directors

**High management ratio of
1 Director to 29 staff**

**195 Graduate Architects of
which 100 are Qualified
Architects**

**High Ratio of Qualified
Architects to Technical Staff**



Established in 2002 to carry out projects for international clients

**An Wholly Owned Foreign Enterprise (WOFE)
Architectural Consulting Practice**

Staff Resources of 40 consists of both HK & local architects



**A branch office in Beijing
WFOE opened in December
2004**

**Allows additional capacity to
further expand business
opportunities to Shanghai and
the near regions**





Opened in September 2005.

A total 8 staff and will keep on expanding in order to cope with the growth of the city



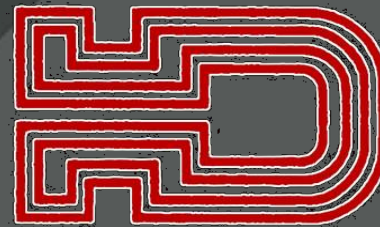
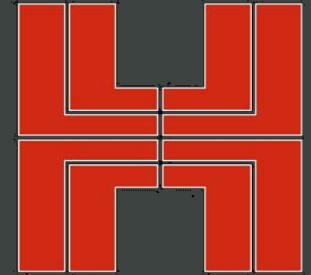
**Incorporated in Singapore
since 1995**

**Over 25 staff, of which 8 are
fully graduated in Architecture
and of these 2 are Qualified
Persons**

- A prominent architectural practice with significant involvement in a broad range of developments, including Commercial, Retail, Hotel, Residential, Railway, Airport, Seaports & Logistic Centres, Masterplanning, Education, Sports & Leisure, Industry , Community & Healthcare.
- Over 500 professional staff work for Aedas in Hong Kong, Beijing, Shanghai, Macau, Singapore, Mumbai and Dubai. These offices offer a full range of architectural services including feasibility studies, detail design, statutory approvals, construction documentation, administration and project management.
- **Aedas Hong Kong** also specializes in providing interior design services through the establishment of **Aedas Interiors**.

Who are our clients

Aedas



- We are committed to the continual improvement of design quality throughout the practice and to the development of a culture of excellence.
- We will act in a socially and environmentally responsible manner and invest in a process of continuous learning for the benefit of our clients and our staff.
- Our aim is to make a positive contribution to the quality of the built environment and to create places which enrich people's lives.

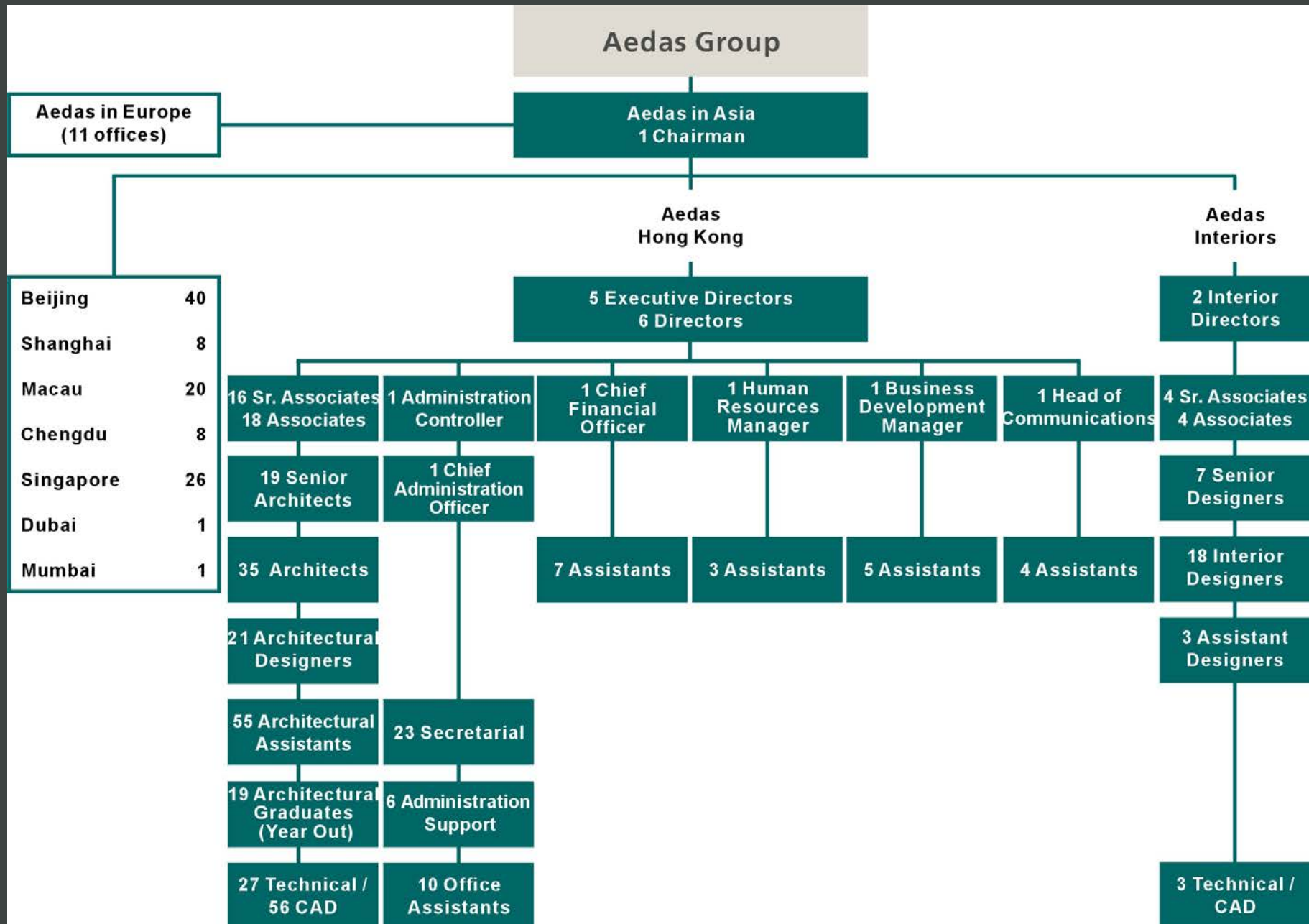
- Aedas encourages individuality both within its work and internal culture. No two people and no two projects are the same; whilst knowledge and experience gained on one project is used to assist another we do not provide off the shelf solutions.
- Aedas Hong Kong's architectural service centres on the Client, both as the end-user and as a member of the team evolving the ultimate concept for the project.
- Aedas Hong Kong's approach is a finely tuned balance of building design seeking customized solutions to create congenial environments, which have enhanced market potential, and an efficient useful life cycle.

- It is Aedas Hong Kong's maxim that each project should not only compliment, but should also make a positive contribution to its surrounding precincts.
- Aedas Hong Kong is committed to a team approach toward design and a horizontal organizational structure that encourages the development of the professional skills of each individual employee to his or her maximum potential.
- Aedas Hong Kong pays particular attention to the detail design of each project to turn our client's aspiration into a reality on time and on budget through an imaginative multi-skilled team.



Company Structure

Aedas



- **Technical Level:** **Technician/ CAD Draughtsman**
Requirement: > Form 5
- **Junior Level:** **Architectural Graduate (Year-Out)**
Architectural Assistant (Post-Graduate)
Requirement: Obtain a Bachelor/ Master Degree in Architecture/ relevant studies in any recognized university
- **Senior Level:** **Architect/ Sr. Architect**
Requirement: 1) Obtain a Bachelor/ Master in Architecture/ relevant studies;
2) Pass any Professional Assessment, e.g. HKIA, RIBA
- **Managerial Level:** **Associate/ Sr. Associate/ Director/ Executive Director**
Requirement: 1) Same as that for Architect/ Sr. Architect;
2) >10 years of professional experience
- For those who would like to experience working in architectural practice, you can apply as **Summer Student/ Trainee**.



WORKING IN AEDAS



A screenshot of a Microsoft Internet Explorer browser window displaying the Aedas eOffice Index Page. The browser's address bar shows the URL <http://news.hk.aedas.com/>. The page features a header with the Aedas logo and the title "eOffice Index Page". The main content area is divided into four columns: Human Resource, IMS, News, and Timesheet. The Human Resource column lists links for the Application System (ISMAS and ISMAS Manager), Procedures (Rental Reporting Program, Administrative Guide, and Voicemail Reference Guide), and Forms (Group Out-Patient Claim Form, Group Hospitalization and Surgical Claim Form (Part I), and Group Hospitalization and Surgical Claim Form (Part II)). The IMS column lists the IMS Index Manual. The News column lists the Private Eye-das Index. The Timesheet column lists the TMCS (Timecard Management Control System). A large text overlay on the right side of the page reads: "Aedas – eOffice: Access to various applications, manuals, monthly newsletters (Private Eye-das), and Timesheet". The browser's status bar at the bottom indicates "Internet".

Human Resource

Application System

- [ISMAS \(Staff Management & Attendance System\)](#)
- [ISMAS Manager](#)

Procedures

- [Rental Reporting Program](#)
- [Administrative Guide](#)
- [Voicemail Reference Guide](#)

Forms

- [Group Out-Patient Claim Form](#)
- [Group Hospitalization and Surgical Claim Form \(Part I\)](#)
- [Group Hospitalization and Surgical Claim Form \(Part II\)](#)

IMS

- [IMS Index Manual](#)

News

- [Private Eye-das Index](#)

Timesheet

- [TMCS \(Timecard Management Control System\)](#)

Aedas – eOffice: Access to various applications, manuals, monthly newsletters (Private Eye-das), and Timesheet

- In operation since 1993
- Appointed a Quality and Environmental Director and a Quality and Environmental Manager as well as eleven Architects who are now qualified Auditors.
- A new Integrated Management System (IMS) Manual launched in May 2003, covering both ISO 9001:2000 and ISO 14001:1996 standards.
- The company then successfully extended its ISO 9001:2000 certificate in October 2003 and obtained ISO 14001:1996 certification in April 2004, to cover both architectural and interior consultancy services for projects in Hong Kong and Overseas.



CERTIFICATE OF REGISTRATION

Quality Management System

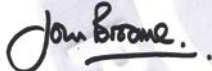
This is to certify that:
Aedas Limited
凱達環球有限公司
19/F., 1063 King's Road
Quarry Bay
Hong Kong

Hold Certificate No: PQ 00086

and operate a Quality Management System which complies with the requirements of ISO 9001:2000 for the following scope:

The provision of architectural and interior design services.
提供建築及室內設計服務。

For and on behalf of BSI Pacific Limited:



Certification Manager

Originally registered : 11 Aug 2003 Latest issue : 18 May 2005 Page: 1 of 2



This certificate remains the property of BSI Pacific Limited and shall be returned immediately upon request. Validity is maintained through a process of continual assessments and reassessments. Further clarifications regarding the scope of this certificate and the applicability of ISO 9001:2000 requirements may be obtained by consulting the organization.
BSI Pacific Limited Address: 2301, 23/F., Carline Centre, 28 Yun Ping Road, Causeway Bay, Hong Kong.



CERTIFICATE OF REGISTRATION

Quality Management System

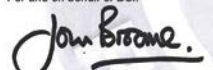
This is to certify that:
Aedas Limited
凱達環球有限公司
19/F., 1063 King's Road
Quarry Bay
Hong Kong

Hold Certificate No: FS 77284

and operate a Quality Management System which complies with the requirements of BS EN ISO 9001:2000 for the following scope:

The provision of architectural and interior design services.
提供建築及室內設計服務。

For and on behalf of BSI:



Certification Manager

Originally registered: 13 Aug 2003 Latest issue: 18 May 2005 Page: 1 of 2



This certificate remains the property of BSI and shall be returned immediately upon request. This certificate does not expire. To check it's validity telephone +44 (0)300 899 9001 or visit www.bsi-global.com/BusinessPartners. Further clarifications regarding the scope of this certificate and the applicability of ISO 9001:2000 requirements may be obtained by consulting the organization. The British Standards Institution is incorporated by Royal Charter. Group Headquarters: 389 Chiswick High Road, London W4 4AL, UK.



CERTIFICATE OF REGISTRATION

Environmental Management System

This is to certify that:
Aedas Limited
凱達環球有限公司
19/F., 1063 King's Road
Quarry Bay
Hong Kong

Hold Certificate No: EMS 79536

and operate an Environmental Management System which complies with the requirements of BS EN ISO 14001:1996 for the following scope:

The environmental management system at Hong Kong site relating to the provision of architectural and interior design services.
於香港之環境管理體系關於提供建築及室內設計服務。

For and on behalf of BSI:



Certification Manager, Systems Assessment

Originally registered: 02 Apr 2004 Latest issue: 18 May 2005 Page: 1 of 2



This certificate remains the property of BSI and shall be returned immediately upon request. This certificate does not expire. To check its validity visit www.bsi-global.com/BusinessPartners. If relevant, additional certified addresses are recorded to the following pages of this certificate.
The British Standards Institution is incorporated by Royal Charter.
Group Headquarters: 389 Chiswick High Road, London W4 4AL, UK.



Aedas

CADD User Manual

Computer Aided Design & Drafting User Manual



Computer Aided Design &
Drafting User (CADD) Manual

Aedas

ADS Manual

Architectural Documentation System



Architectural Documentation
System (ADS) Manual

Aedas

IMS Manual

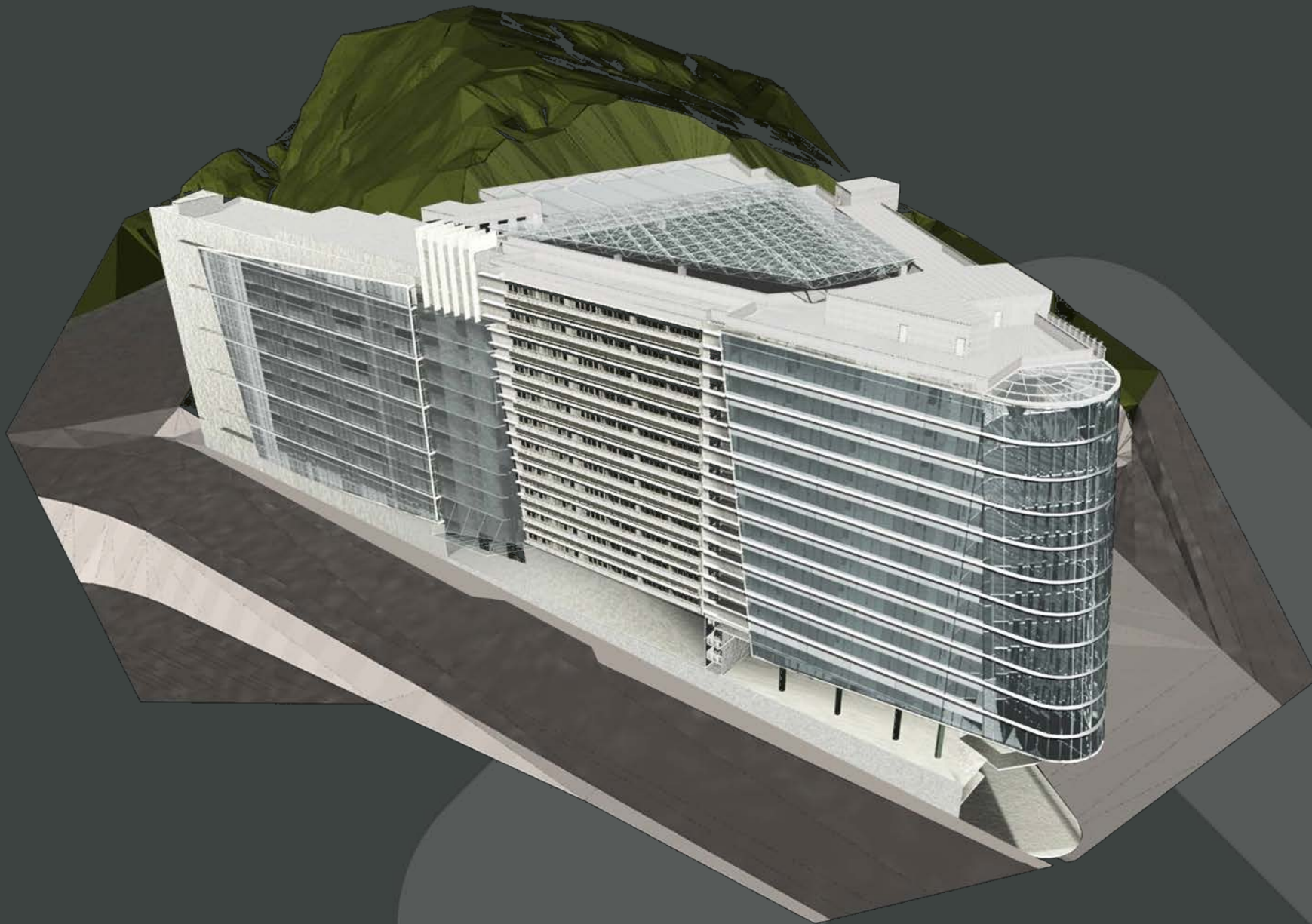
Integrated Management System Manual



Integrated Management
System (IMS) Manual



- Clearly defines the office standard giving all CADD users easily followed procedures for their day-to-day CADD operation, with particular emphasis placed on clarity, speed of use, and consistency of drawings.
- Aedas Hong Kong considers that clear and concise CADD standards are one of the key successes to quality design and services.





Architecture + Structure

Autodesk Architectural Desktop 2005 for Structure



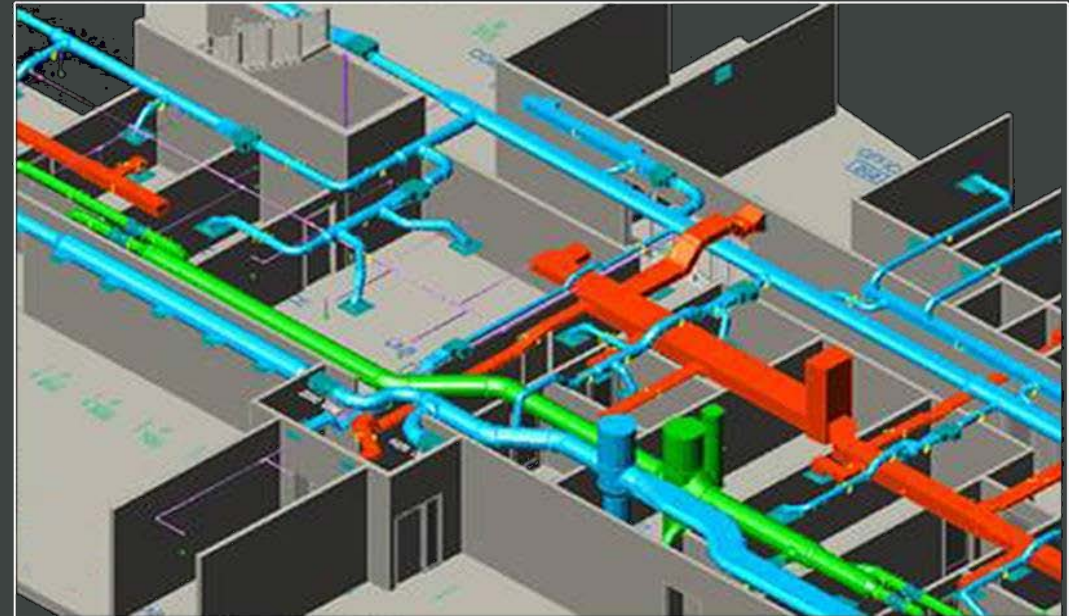
Architecture + E&M

Autodesk Architectural Desktop 2005 for Structure



Architecture + Structure +E&M

Autodesk Architectural Desktop 2005 for Structure



Clash Analysis
*Full set of construction
Combined Services Drawings
produced*

Close-up collaboration



ROOM FINISH SCHEDULE																										
Room No.	Room	FLOOR		WALLS												CEILING			NOTES							
				NORTH				SOUTH				EAST								WEST						
		MATL	COL	MATL	COLOR	MATL	COLOR	MATL	COLOR	MATL	COLOR	MATL	COLOR	MATL	COLOR	MATL	COLOR	HEIGHT								
		GN	HT	WHITE	EP	FB	MB	RED	WHITE	VEL	EP	FB	MB	RED	WHITE	VEL	EP	FB		MB	RED	WHITE	VEL	GB	WHITE	
101	LECTURE RM.	•	•	•	•																			2750	--	
102	LECTURE RM.	•	•	•	•																			•	2750	--
103	LECTURE RM.	•	•	•	•																			•	2750	--
104	LECTURE RM.	•	•	•	•																			•	2750	--
105	LECTURE RM.	•	•	•	•																			•	2750	--
106	LECTURE RM.	•	•	•	•																			•	2750	--
107	LECTURE RM.	•	•	•	•																			•	2750	--
108	LECTURE RM.	•	•	•	•																			•	2750	--
109	LECTURE RM.	•	•	•	•																			•	2750	--
110	LECTURE RM.	•	•	•	•																			•	2750	--
111	LECTURE RM.	•	•	•	•																			•	2750	--
112	LECTURE RM.	•	•	•	•																			•	2750	--
113	LECTURE RM.	•	•	•	•																			•	2750	--
114	LECTURE RM.	•	•	•	•																			•	2750	--
115	LECTURE RM.	•	•	•	•																			•	2750	--
116	LECTURE RM.	•	•	•	•																			•	2750	--
117	LECTURE RM.	•	•	•	•																			•	2750	--

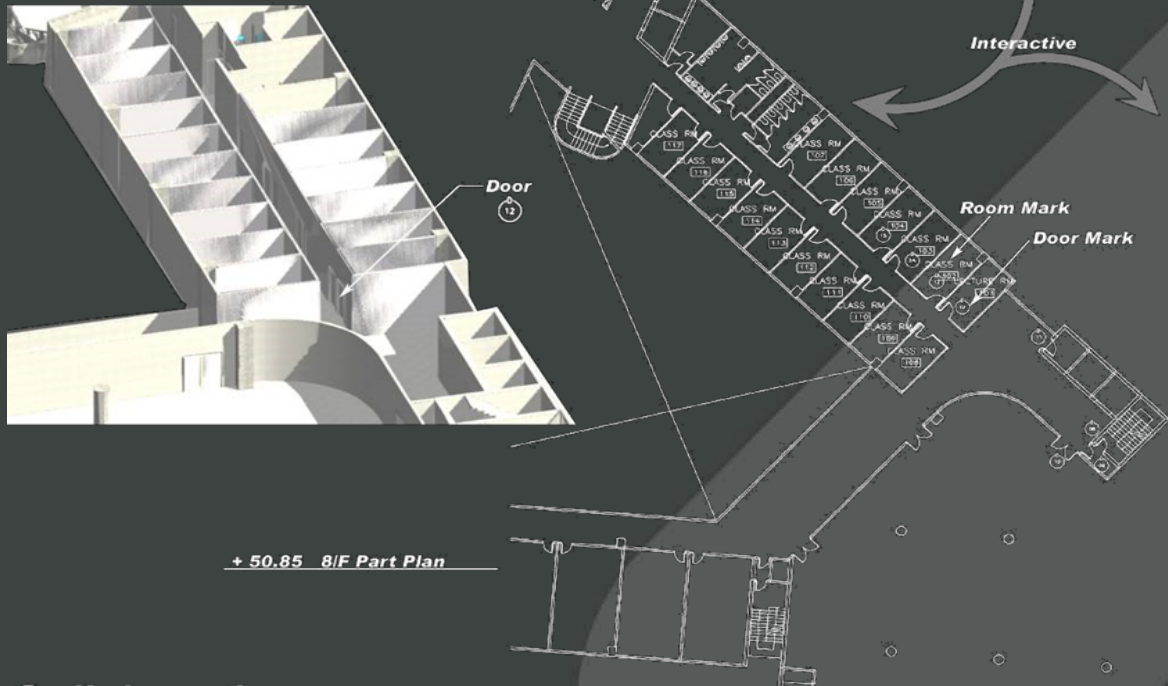
AREA SCHEDULE					
Room No.	Room	Dimension			
		Net Floor Area	Length	Width	Height
101	LECTURE RM.	14m ²	5641	5772	2750
102	LECTURE RM.	13m ²	5315	5772	2750
103	LECTURE RM.	14m ²	5677	5772	2750
104	LECTURE RM.	14m ²	5677	5772	2750
105	LECTURE RM.	13m ²	5315	5772	2750
106	LECTURE RM.	14m ²	5677	5772	2750
107	LECTURE RM.	14m ²	5677	5772	2750
108	LECTURE RM.	12m ²	5334	5303	2750
109	LECTURE RM.	12m ²	5230	4958	2750
110	LECTURE RM.	12m ²	5230	5303	2750
111	LECTURE RM.	12m ²	5334	5303	2750
112	LECTURE RM.	12m ²	5230	4958	2750
113	LECTURE RM.	12m ²	5303	5303	2750
114	LECTURE RM.	12m ²	5334	5303	2750
115	LECTURE RM.	12m ²	5230	4958	2750
116	LECTURE RM.	12m ²	5302	5303	2750
117	LECTURE RM.	12m ²	5334	5303	2750

Linked Schedules

Interactive

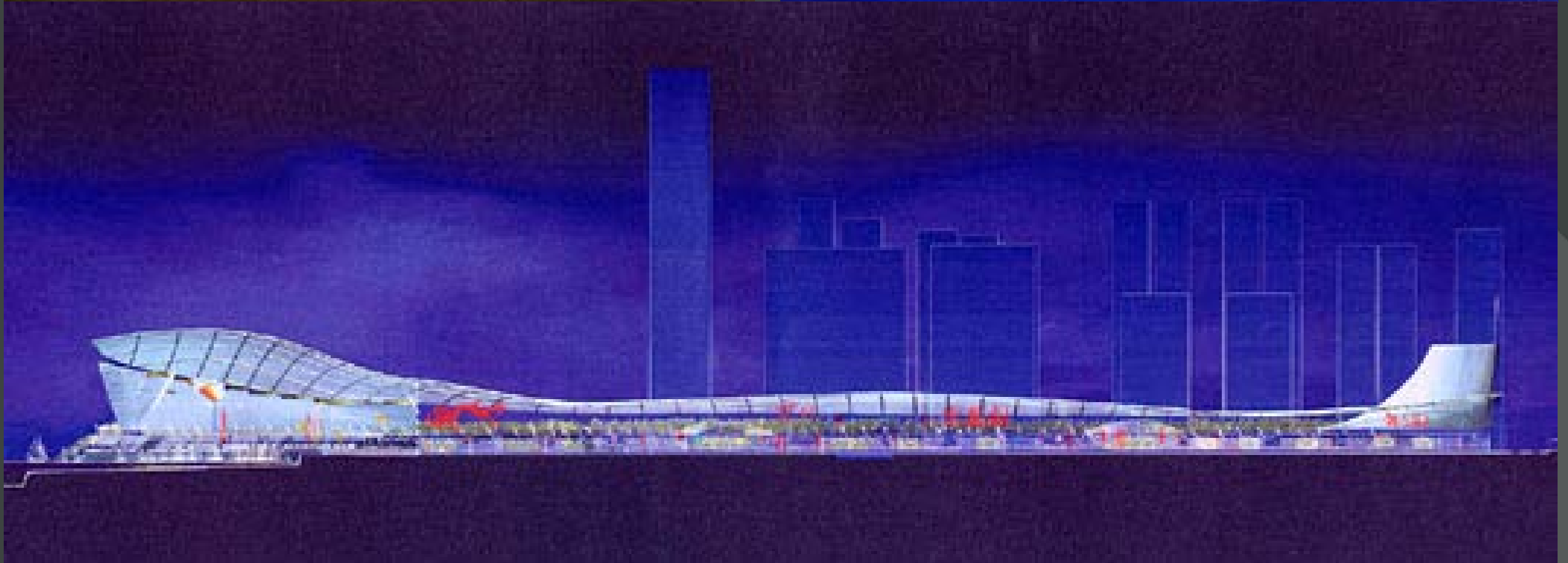
By using Autodesk Architectural Desktop, all schedules eg. Area Schedule, Finish Schedule, Door Schedule, Window Schedule are related to 3D model.

Change in model results in updating of schedules.



DOOR AND FRAME SCHEDULE															
DOOR								FRAME					FIRE RATING LABEL	HARDWARE	
MARK	SIZE			MATL	GLAZING	LOUVER		MATL	EL	DETAIL					
	WD	HGT	THK			WD	HGT			HEAD	JAMB	SILL		SET NO	KEYS/ RM N
8	750	2000	50	TM	--	0	0	ST	--	T05	T06	T07	1/2HR	--	--
9	750	2000	50	TM	--	0	0	ST	--	T05	T06	T07	1/2HR	--	--
10	1800	2000	40	--	WG	0	0	--	--	--	--	--	2HR	--	--
11	900	2000	50	TM	TG	0	0	ST	--	T05	T06	T07	1HR	--	--
12	900	2000	50	TM	TG	0	0	ST	--	T05	T06	T07	1HR	--	--
13	900	2000	50	TM	TG	0	0	ST	--	T05	T06	T07	1HR	--	--
14	900	2000	50	TM	TG	0	0	ST	--	T05	T06	T07	1HR	--	--
15	900	2000	50	TM	TG	0	0	ST	--	T05	T06	T07	1HR	--	--
16	900	2000	50	TM	TG	0	0	ST	--	T05	T06	T07	1HR	--	--
53	750	2000	50	TM	--	0	0	ST	--	T05	T06	T07	1/2HR	--	--
54	750	2000	50	TM	--	0	0	ST	--	T05	T06	T07	1/2HR	--	--
55	900	2000	50	TM	TG	0	0	ST	--	T05	T06	T07	1HR	--	--
56	900	2000	50	TM	TG	0	0	ST	--	T05	T06	T07	1HR	--	--
57	900	2000	50	TM	TG	0	0	ST	--	T05	T06	T07	1HR	--	--
58	900	2000	50	TM	TG	0	0	ST	--	T05	T06	T07	--	--	--
59	900	2000	50	TM	TG	0	0	ST	--	T05	T06	T07	--	--	--
60	750	2000	50	TM	--	0	0	ST	--	T05	T06	T07	--	--	--
61	900	2000	50	TM	TG	0	0	ST	--	T05	T06	T07	--	--	--
62	900	2000	50	TM	TG	0	0	ST	--	T05	T06	T07	--	--	--
63	900	2000	50	TM	TG	0	0	ST	--	T05	T06	T07	--	--	--
64	900	2000	50	TM	TG	0	0	ST	--	T05	T06	T07	--	--	--

Collaboration of Information in Documentation & Construction Stage

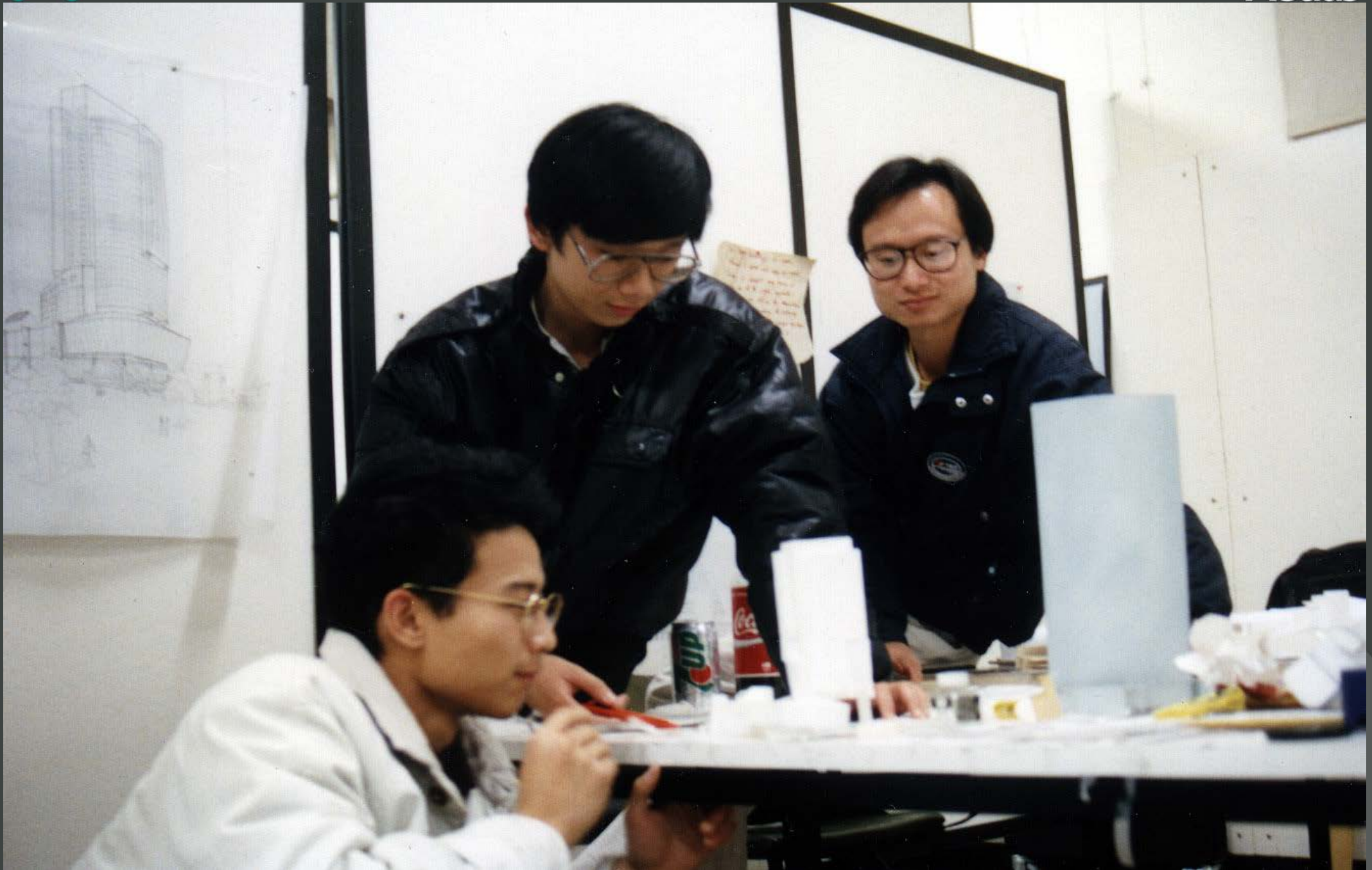


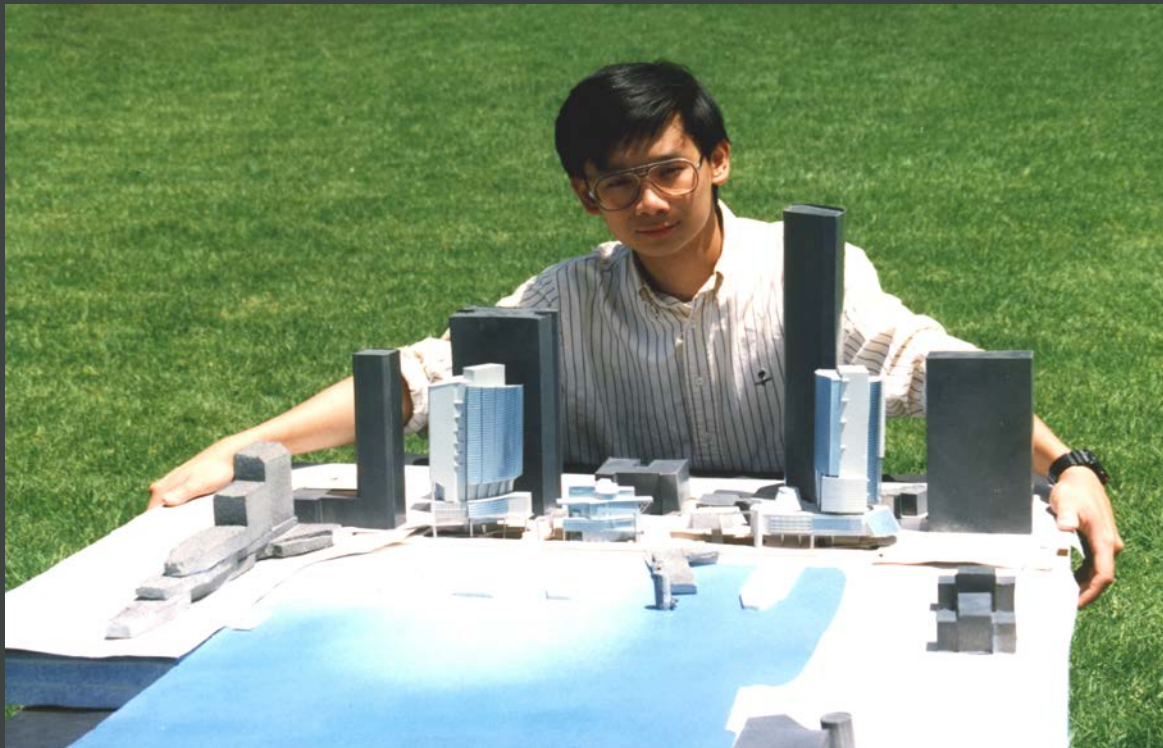




- **Internal Forums** – Through the Directors, any staff member can instigate Internal Forums when considered to be necessary, to update staff awareness of new developments within the industry.
- **External Training** – Any staff member can propose attendance at externally organized courses or seminars within working hours. Any financing requirements are discussed and agreed with the Director. Copies of certificates of attendance will be filed in the staff personnel file.





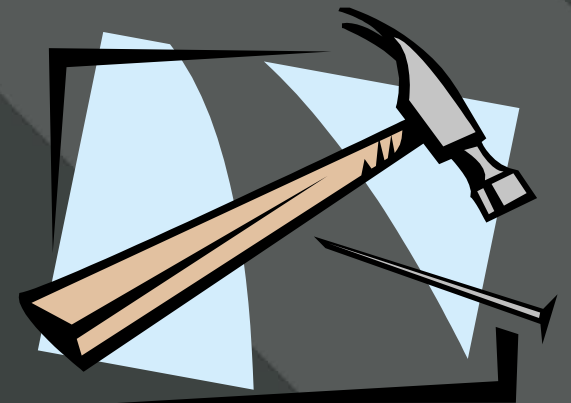




9 1 6 19











建築師 = 見. 觸. 思





Q&A SESSION