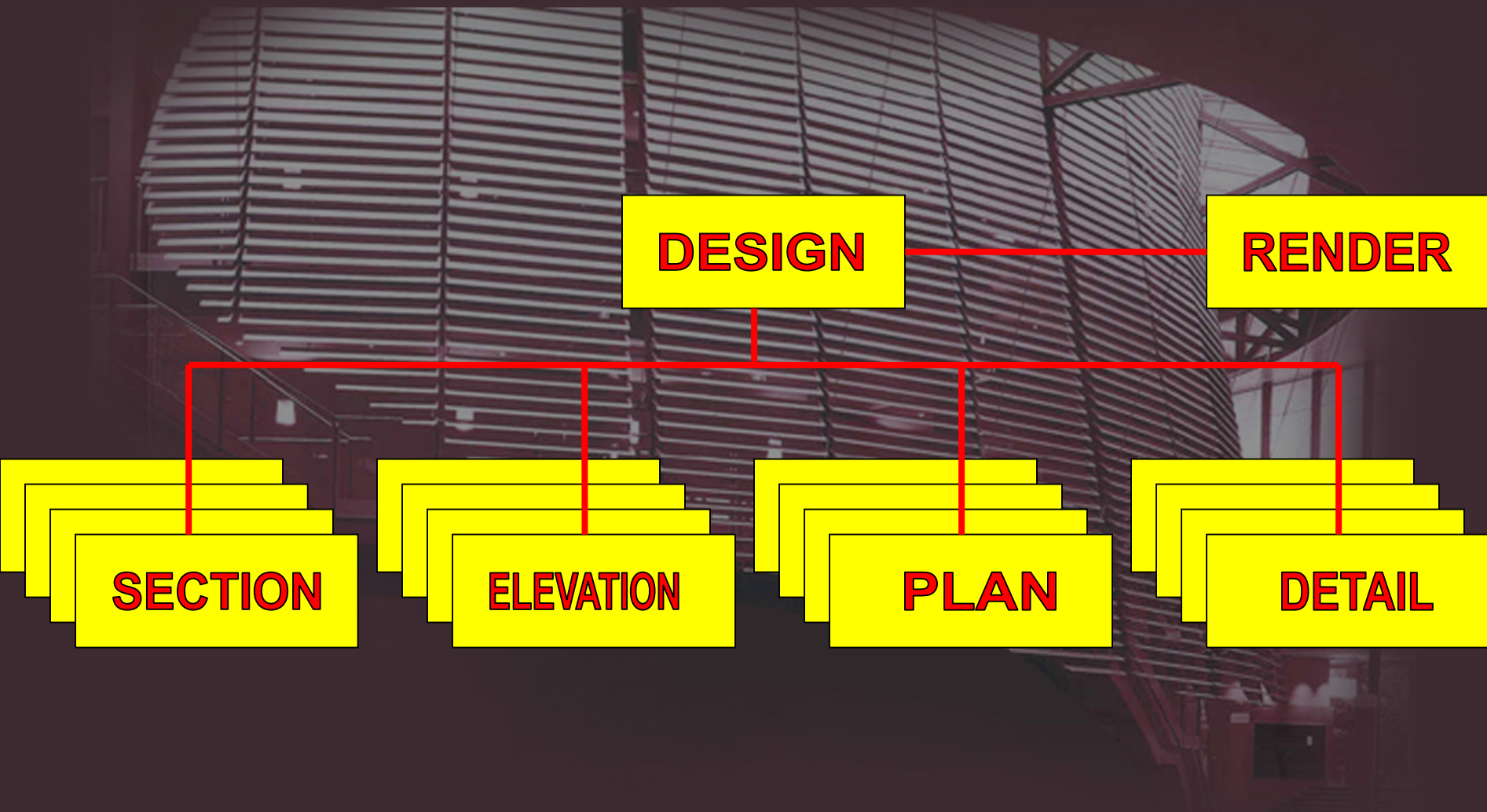


The background image shows a modern architectural structure with a curved, metallic, ribbed facade. The building has a glass-enclosed upper section and a staircase on the left side. The overall color scheme is dark with a reddish-brown tint.

# 3D Modeling for an Architect's Practice

An Architect's Experience of how the Efficiency, Accuracy and Productivity in Building Design, Documentation and Construction are revolutionized

# EXISTING DRAWING PRACTICE





# RENDERED MODEL



# RENDERED MODEL

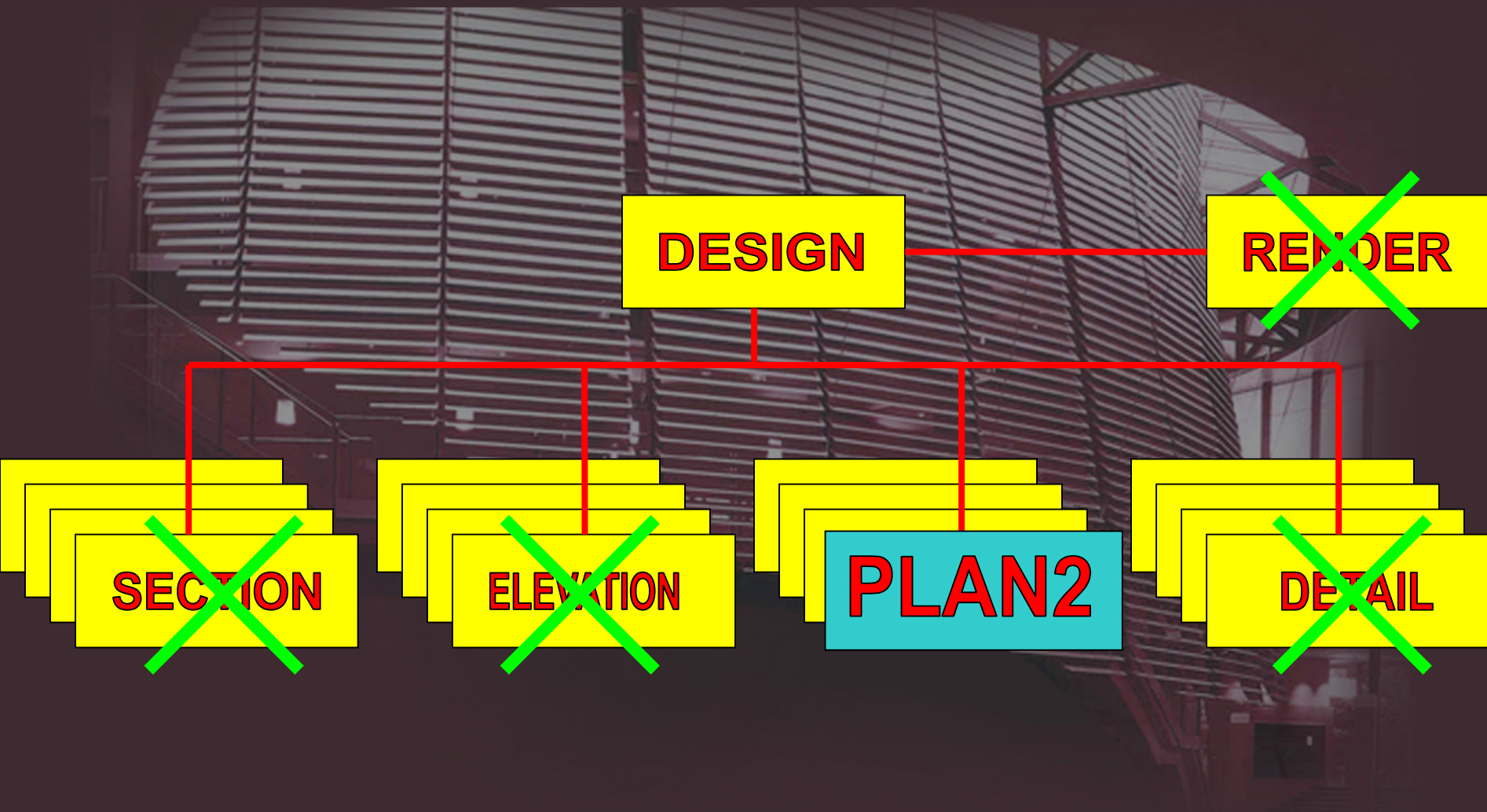




# RENDERED MODEL

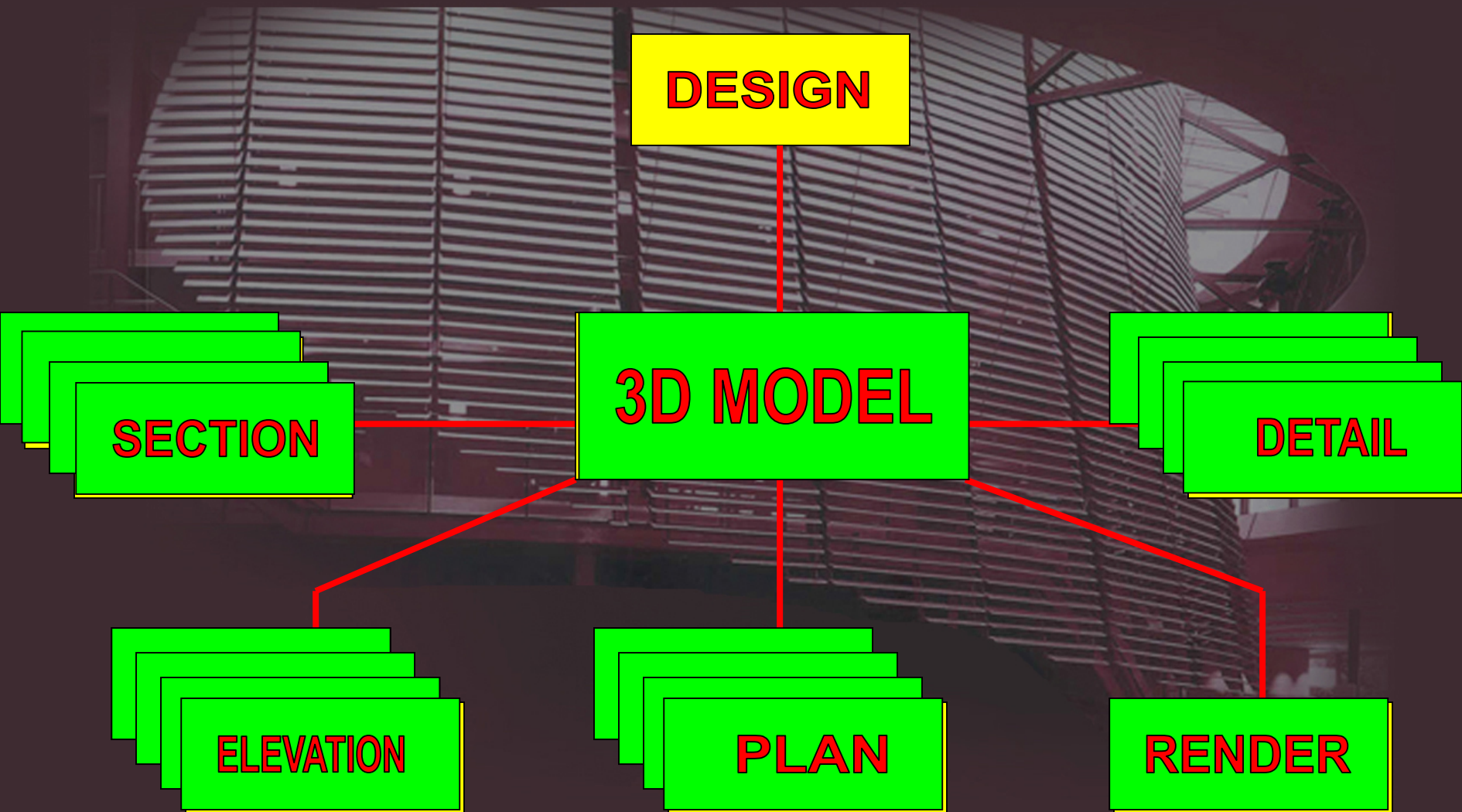


# EXISTING DRAWING PRACTICE

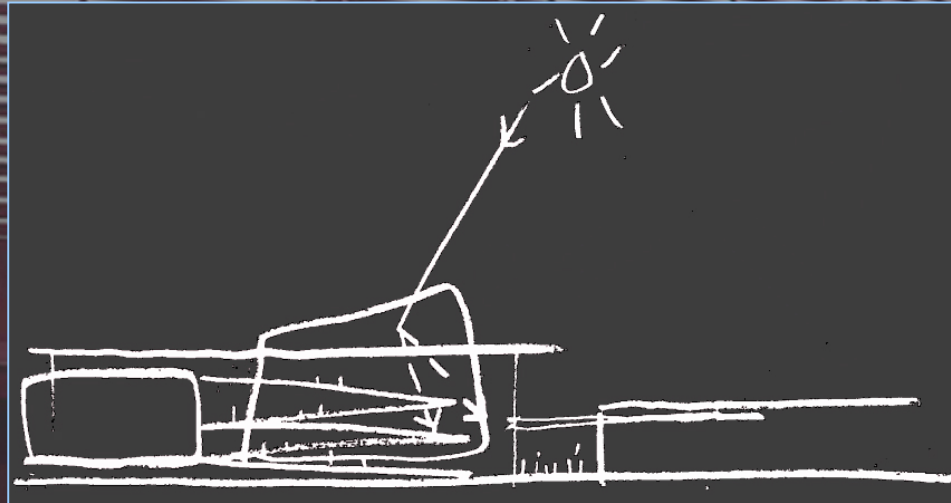




# 3D DRAWING CONCEPT

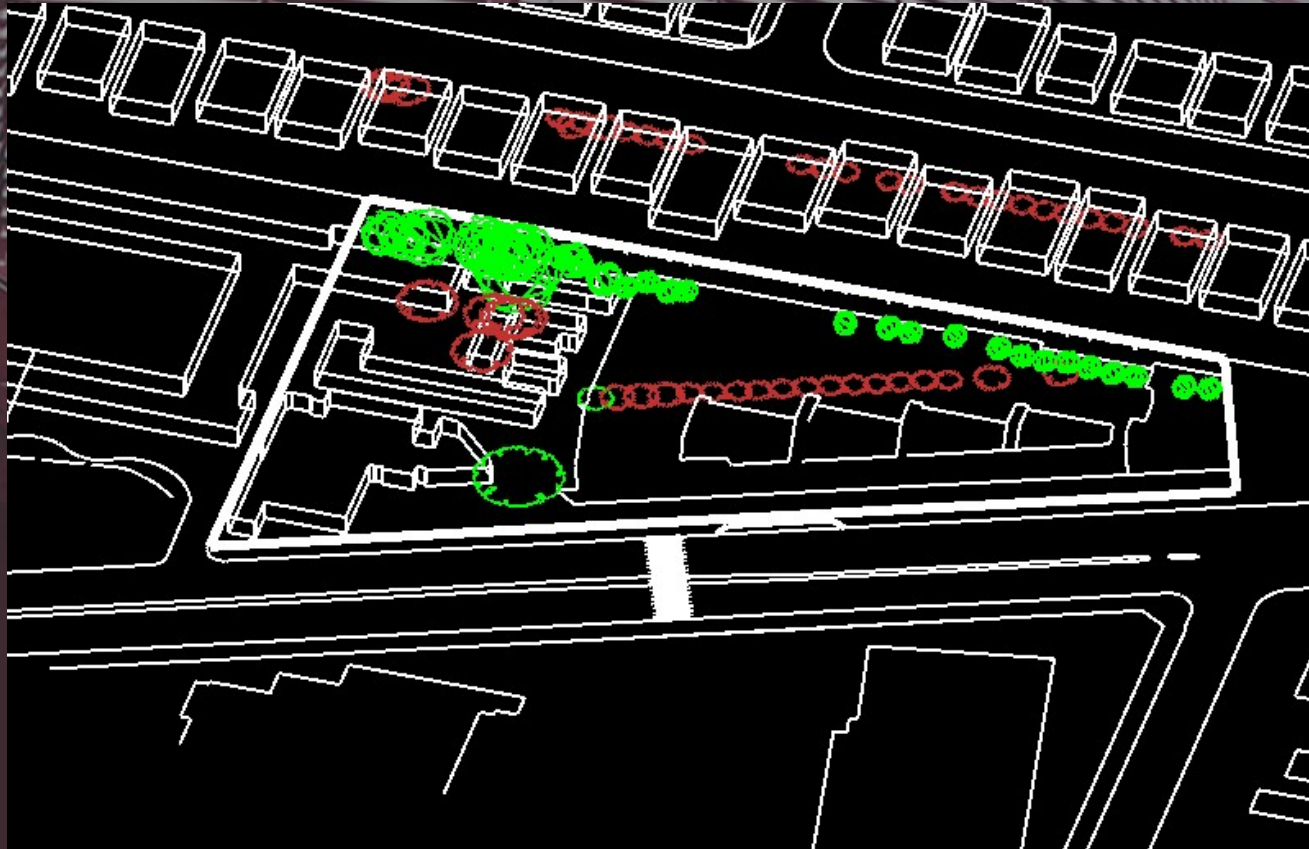


# NATIONAL INSTITUTE OF DRAMATIC ARTS (NIDA) SYDNEY, AUSTRALIA

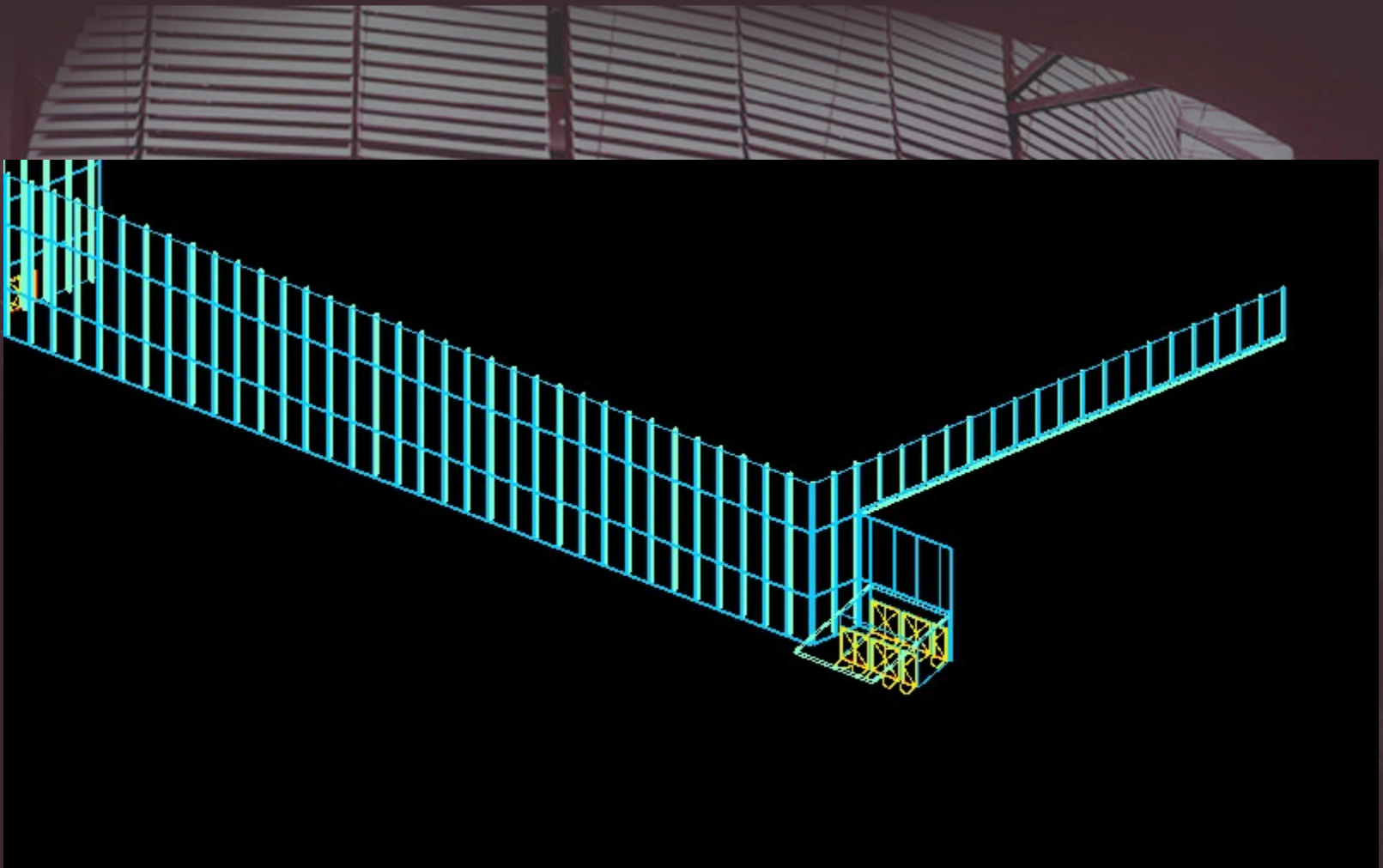




## 3D SITE

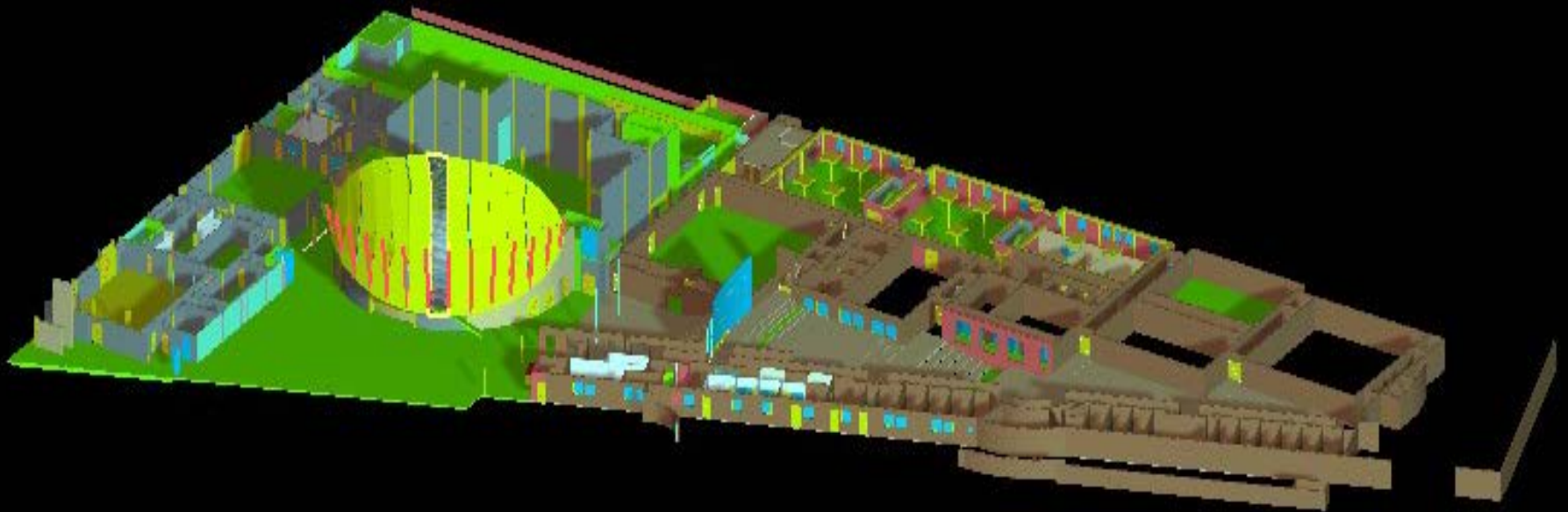


# DESIGN IN 3D

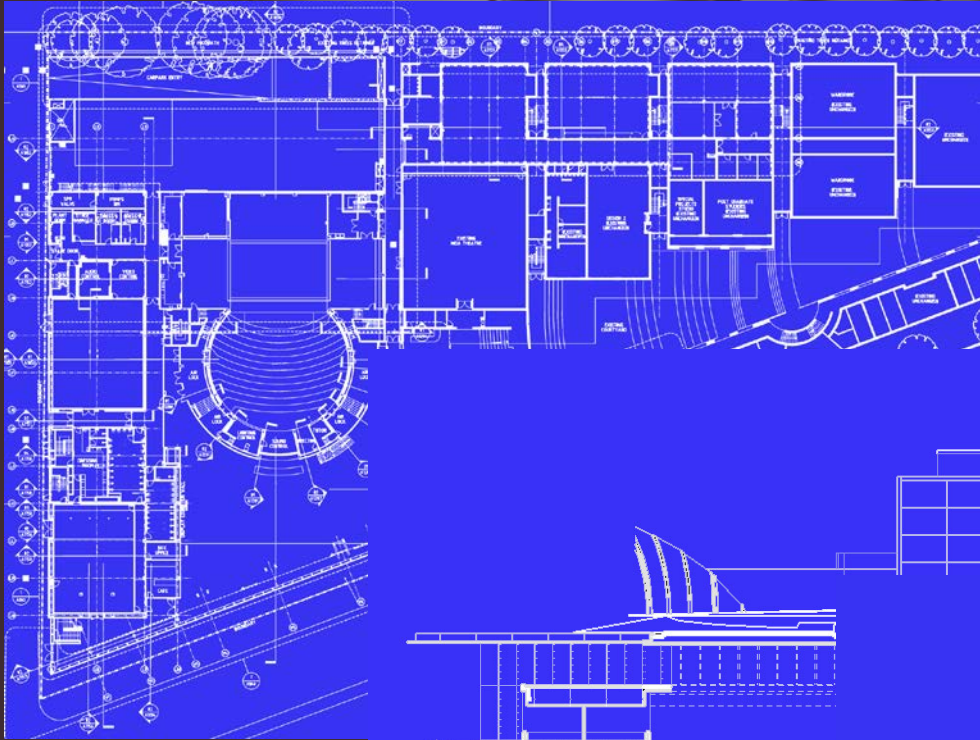




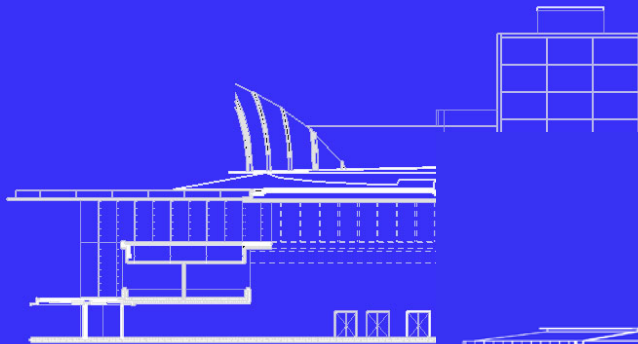
# BUILDING 3D MODEL



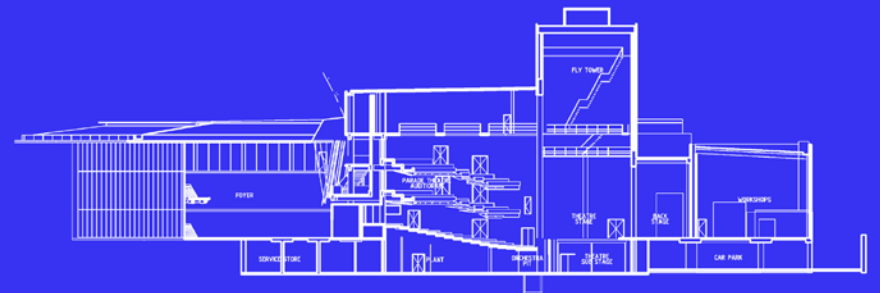
# SELF-GENERATED ...



PLANS



ELEVATIONS

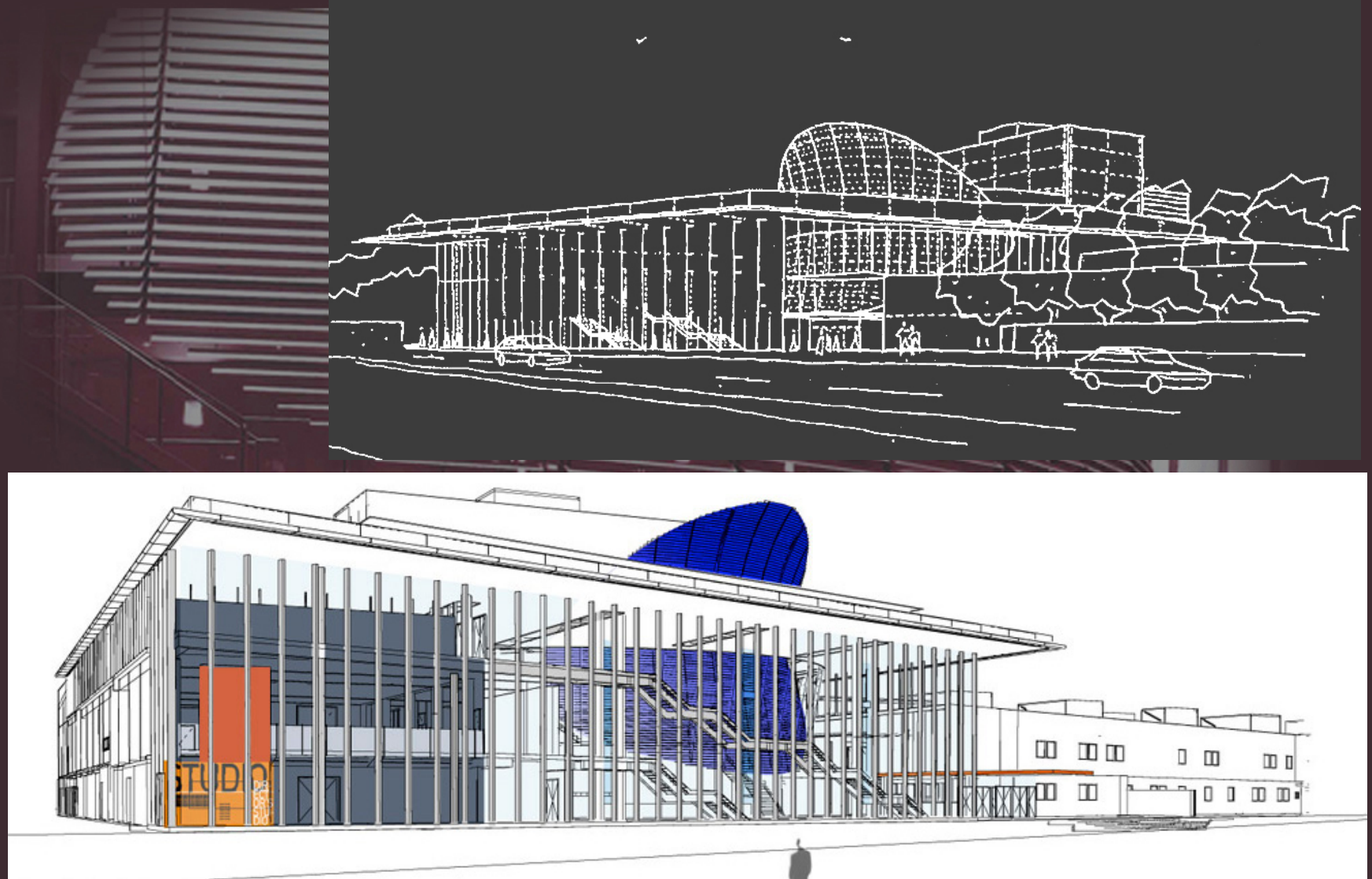


SECTIONS

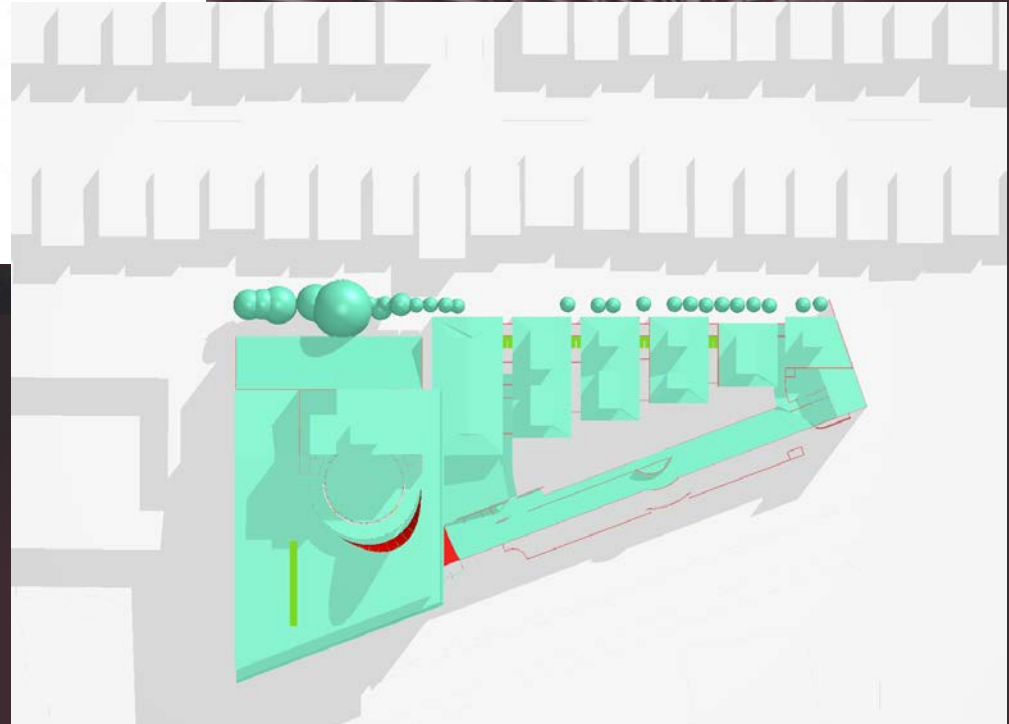
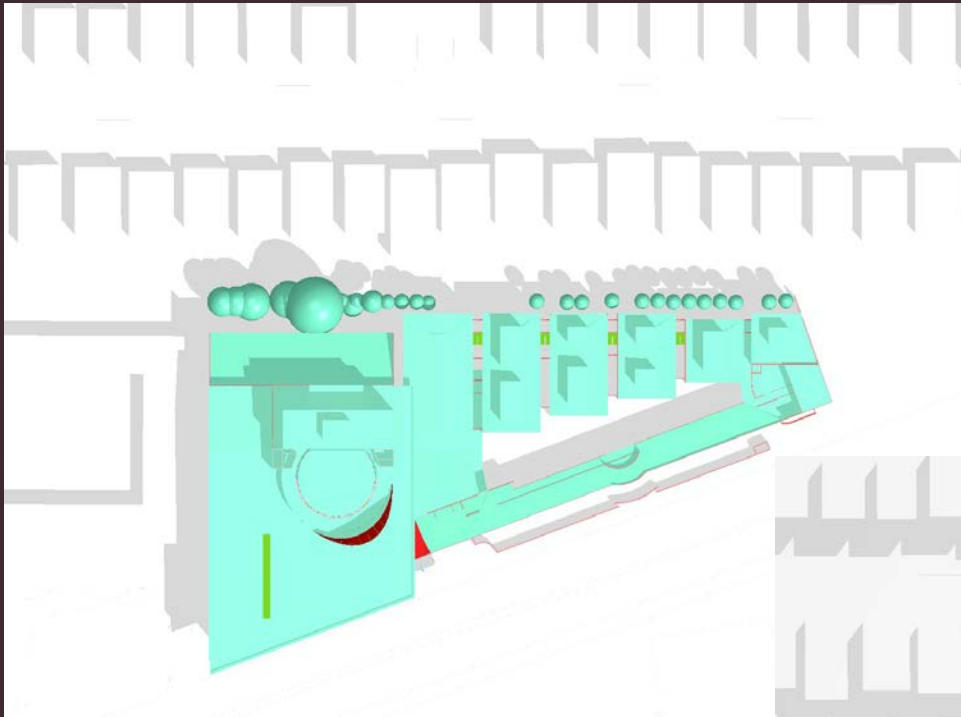




# GENERATED PERSPECTIVES



# SHADOW ANALYSIS





# SAME MODEL RENDERING

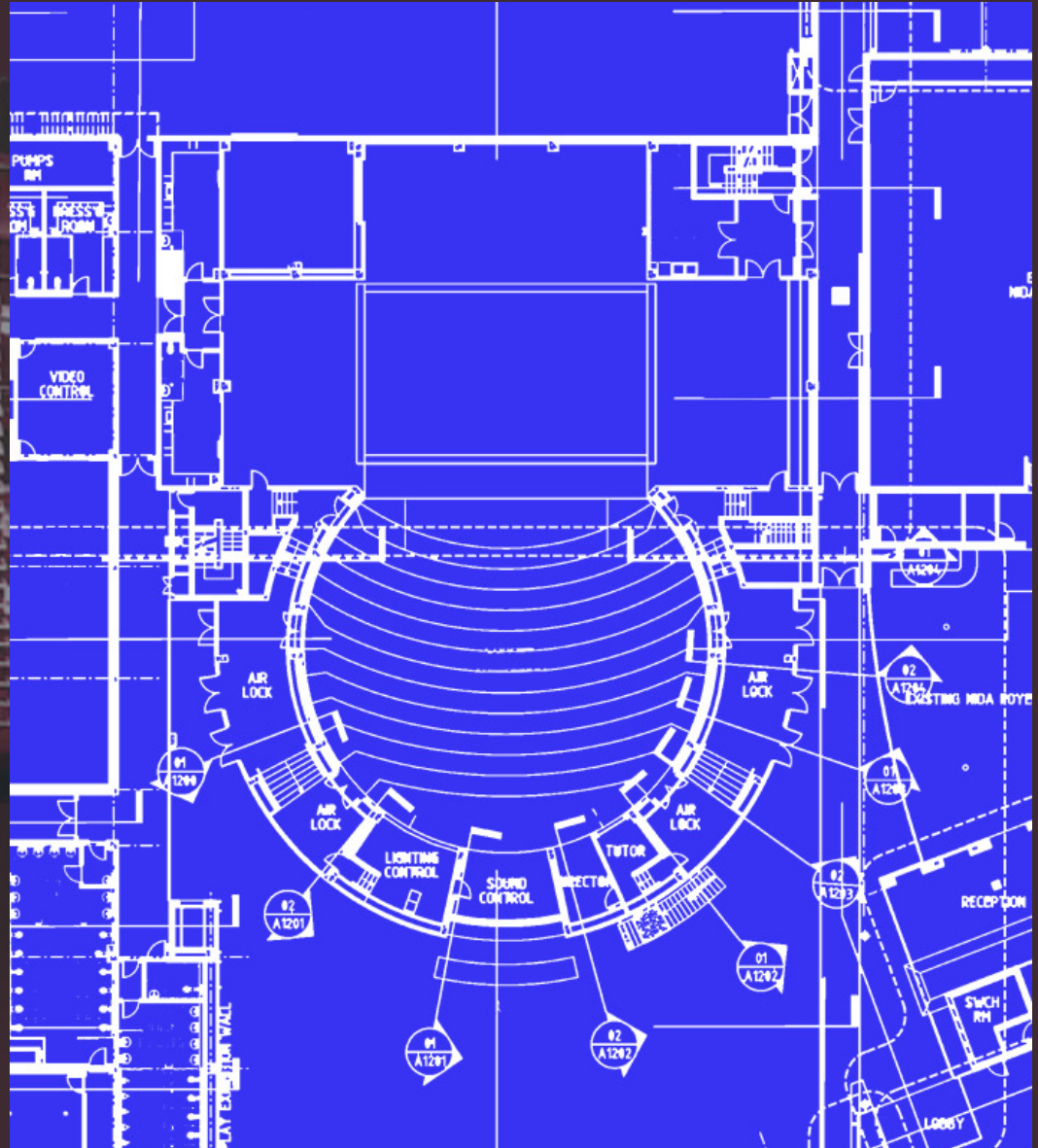




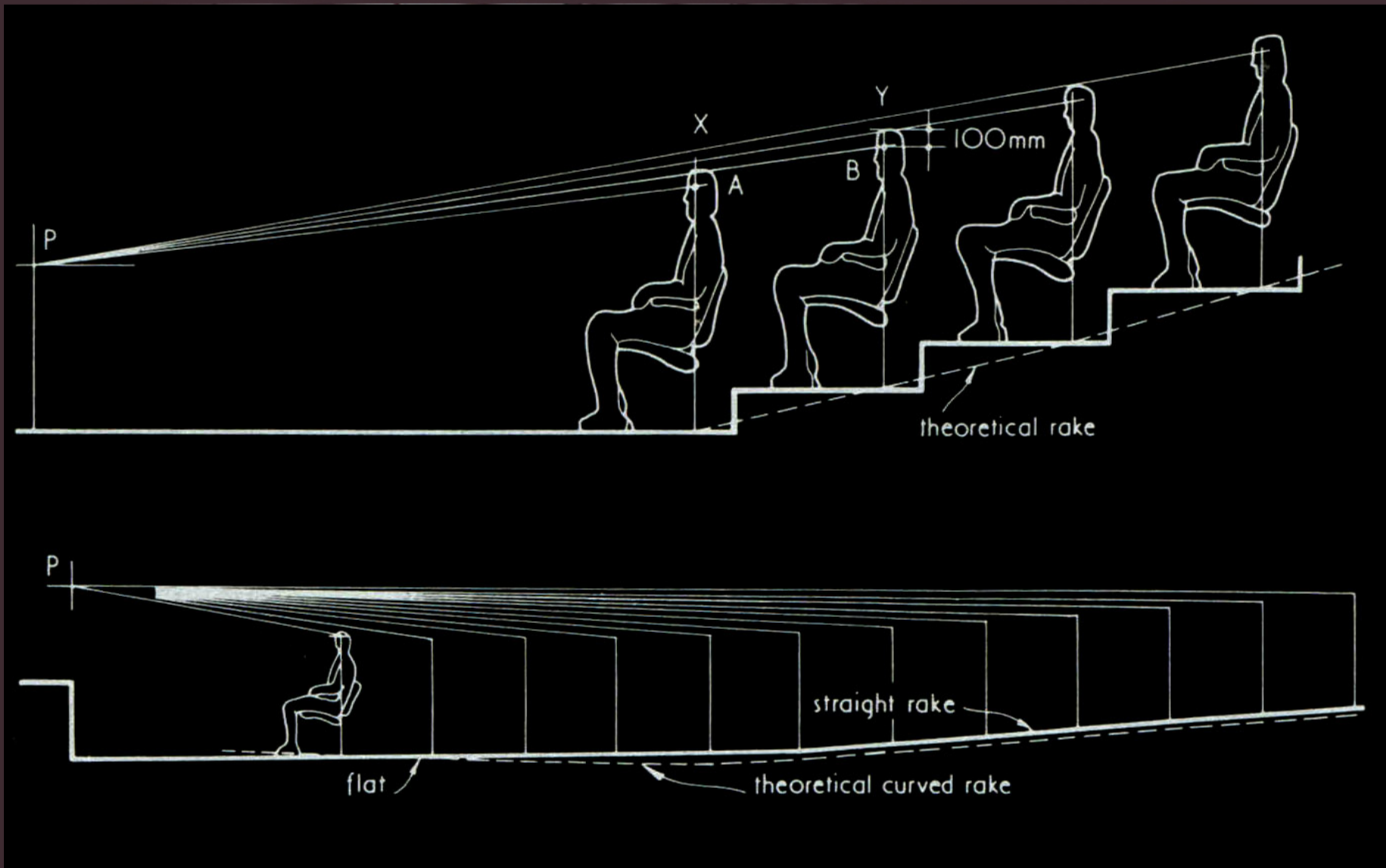
# COMPLETED PROJECT



# THEATRE DESIGN

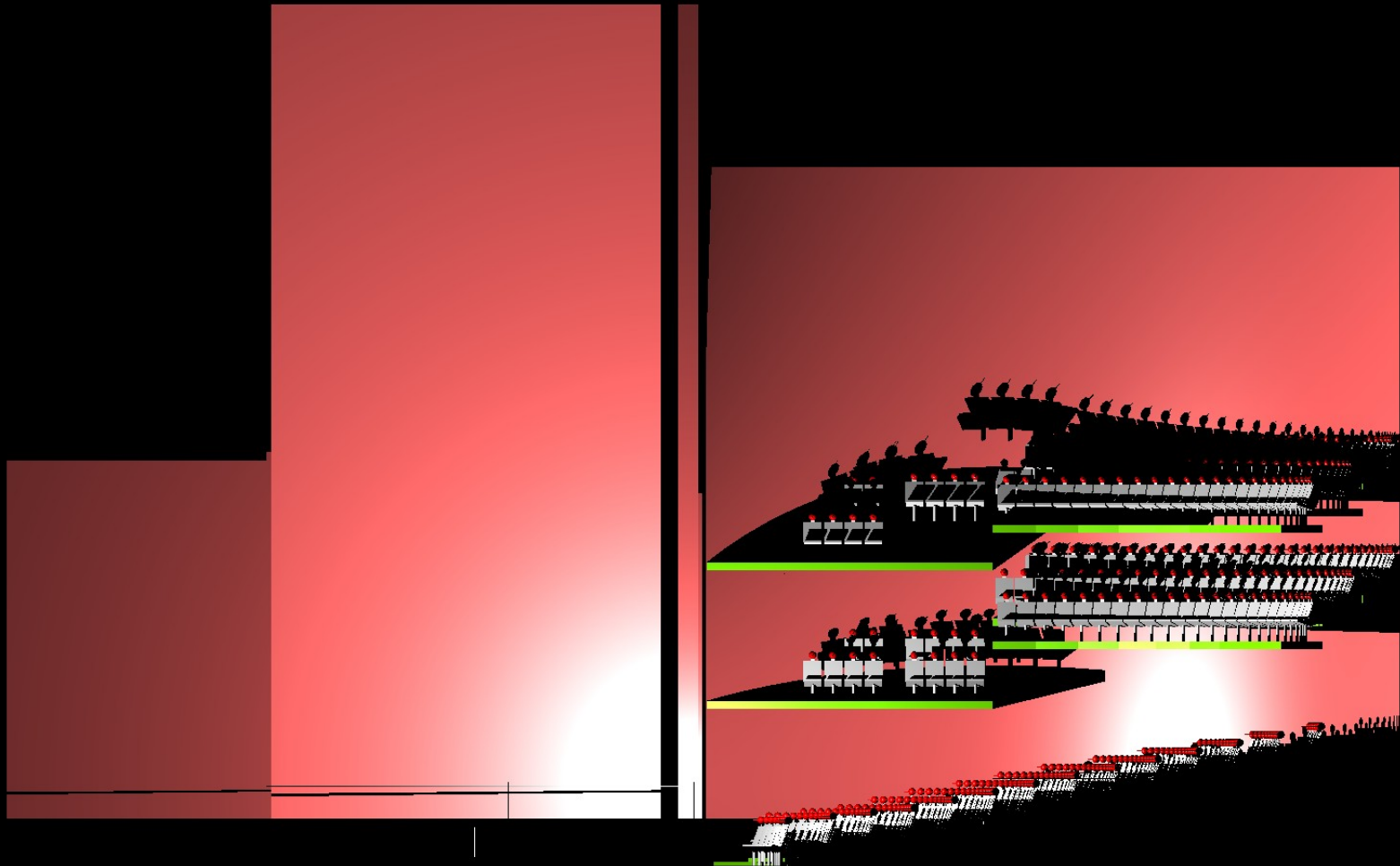


# THEORETICAL SIGHTLINE ANALYSIS (METRIC HANDBOOK)

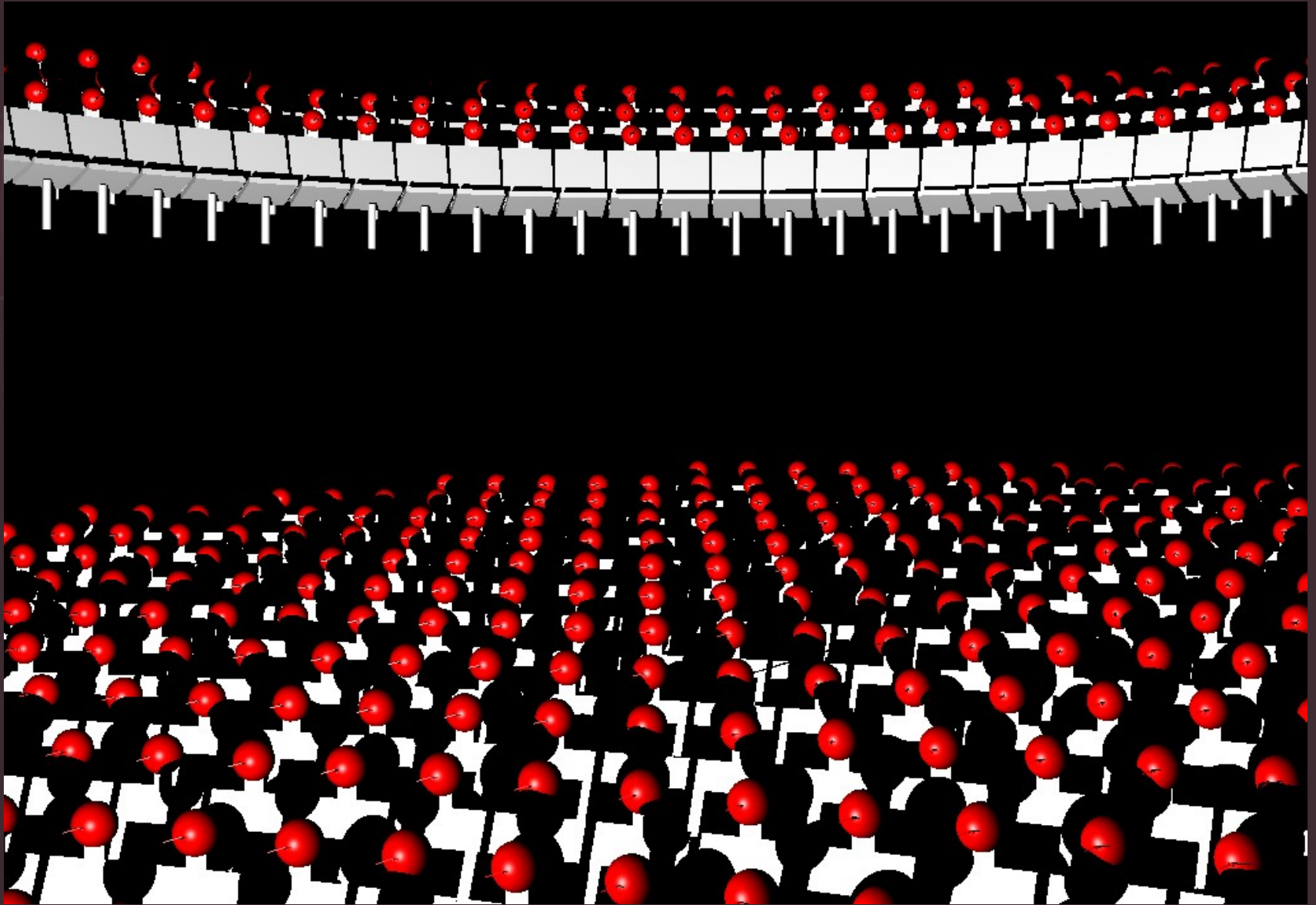




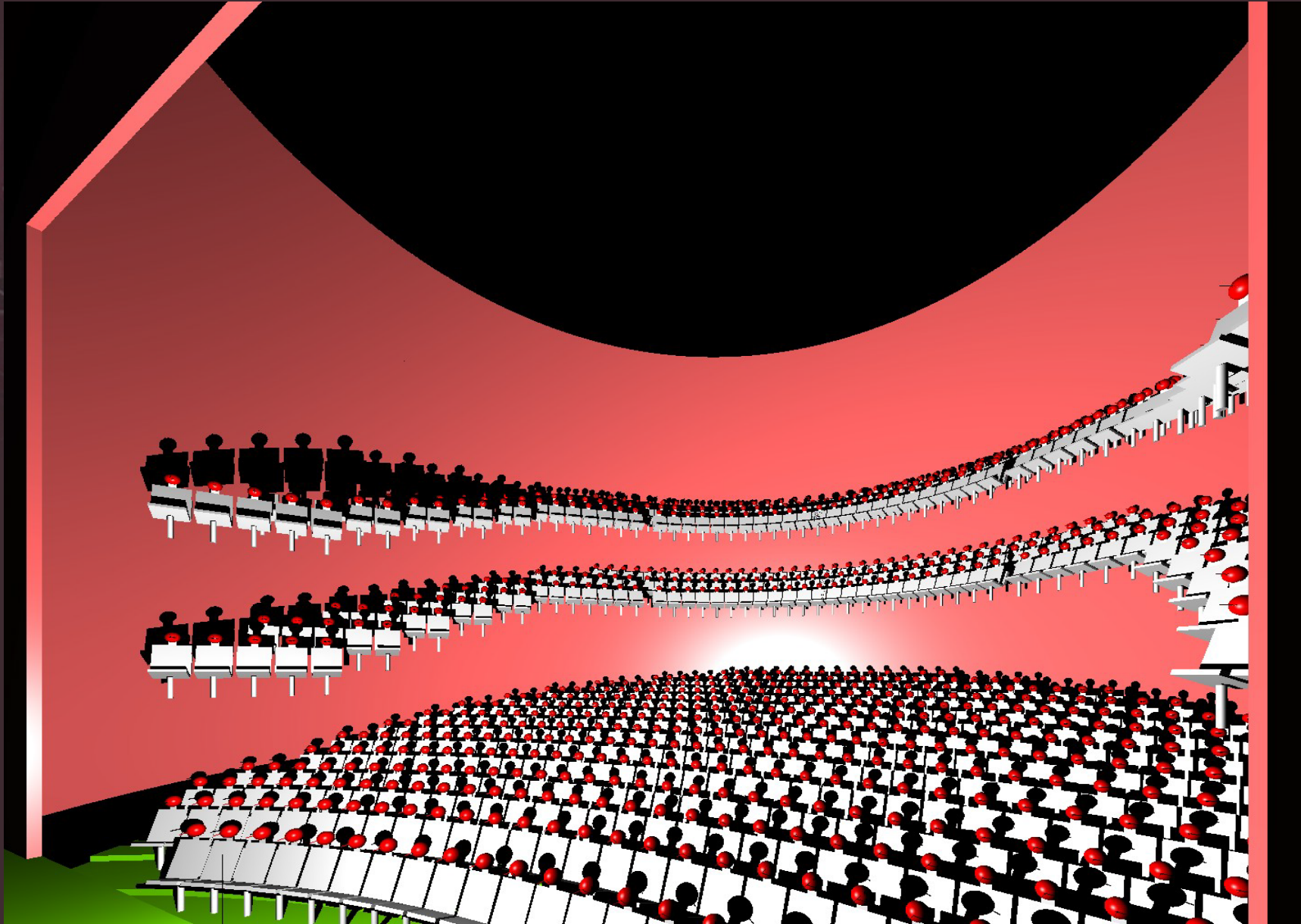
# RADIATION SIGHTLINE ANALYSIS



# RADIATION SIGHTLINE ANALYSIS



# RADIATION SIGHTLINE ANALYSIS





# THEATRE

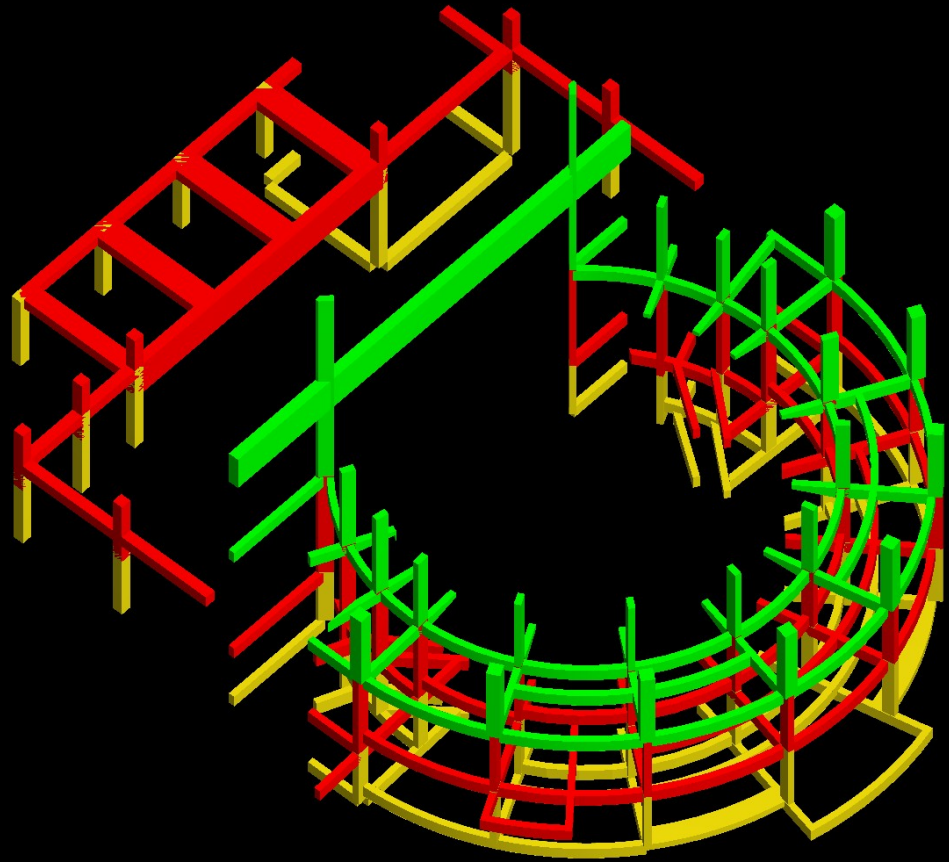


# THEATRE



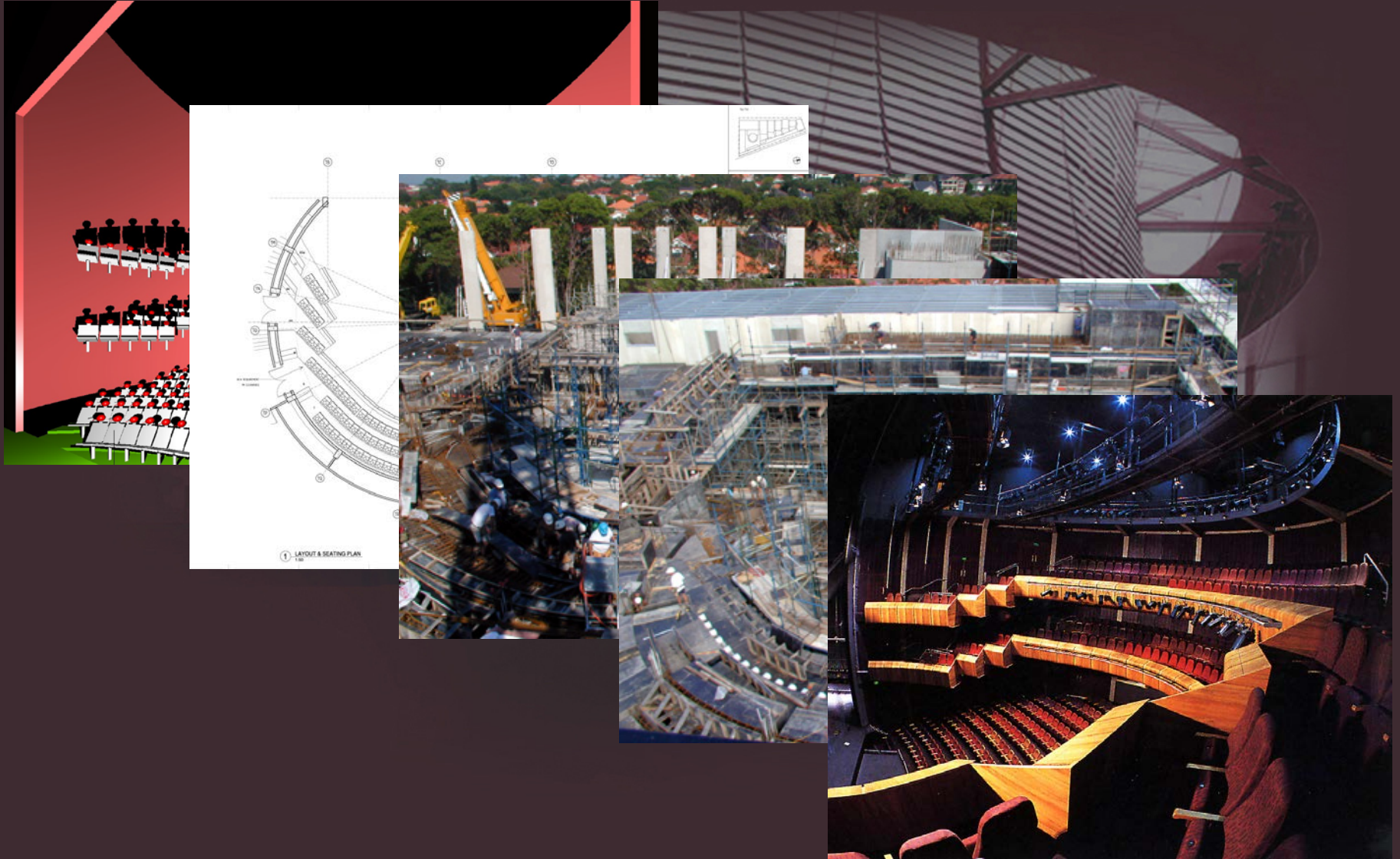


# STRUCTURAL ANALYSIS

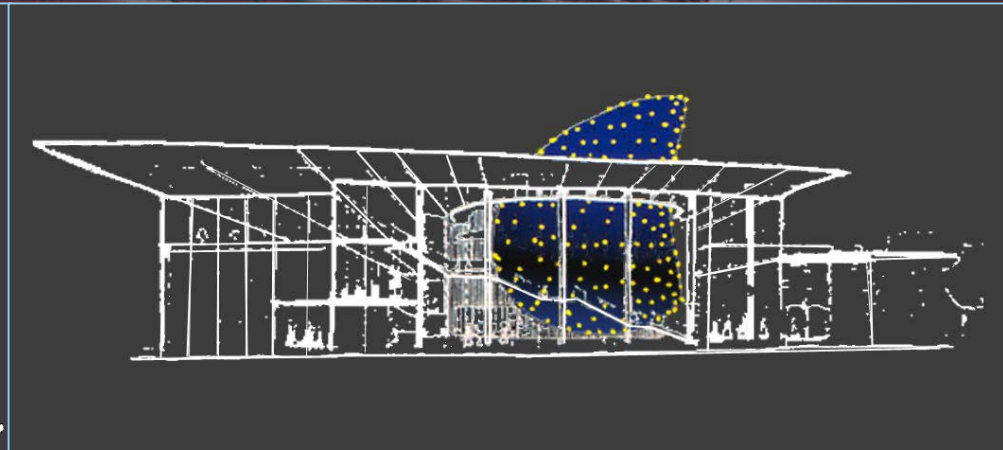
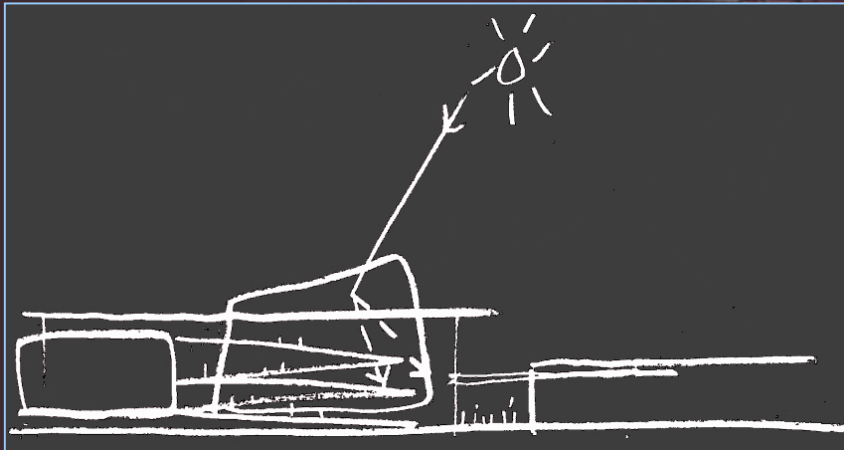
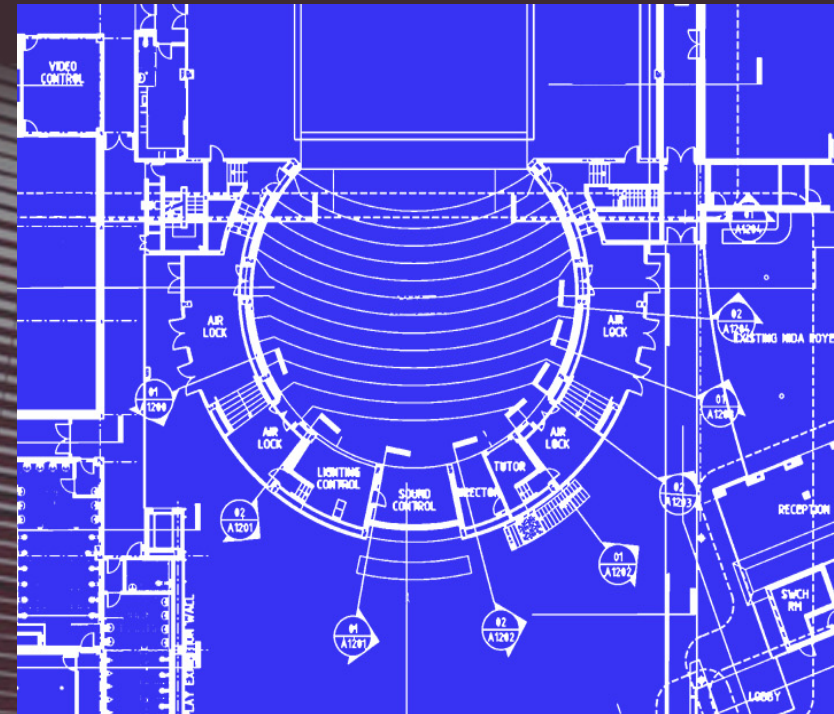




# DESIGN – DOCUMENTATION – CONSTRUCTION

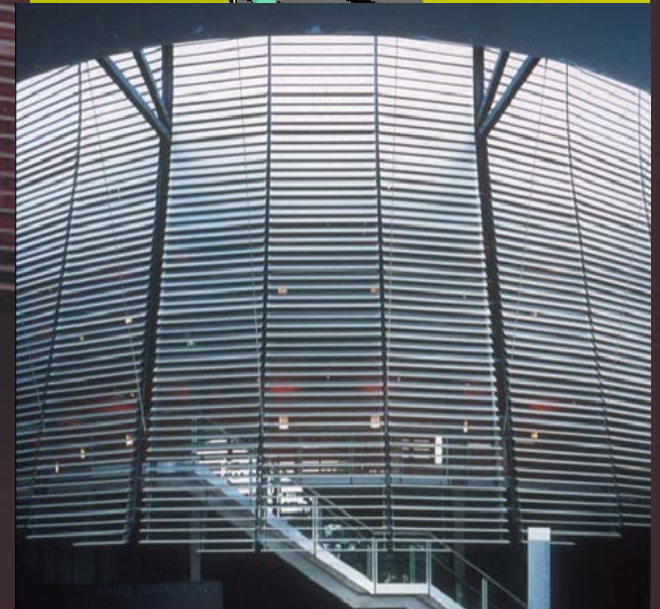
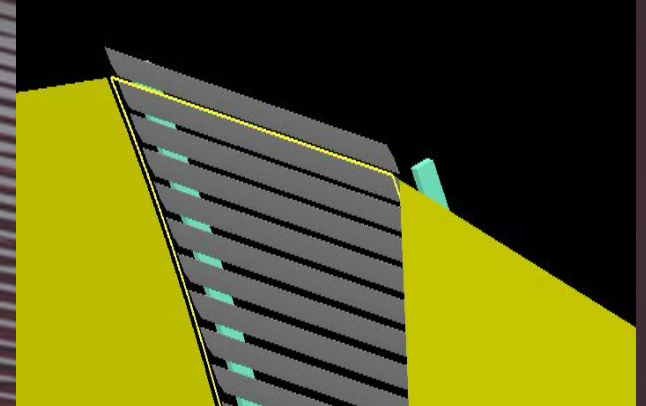
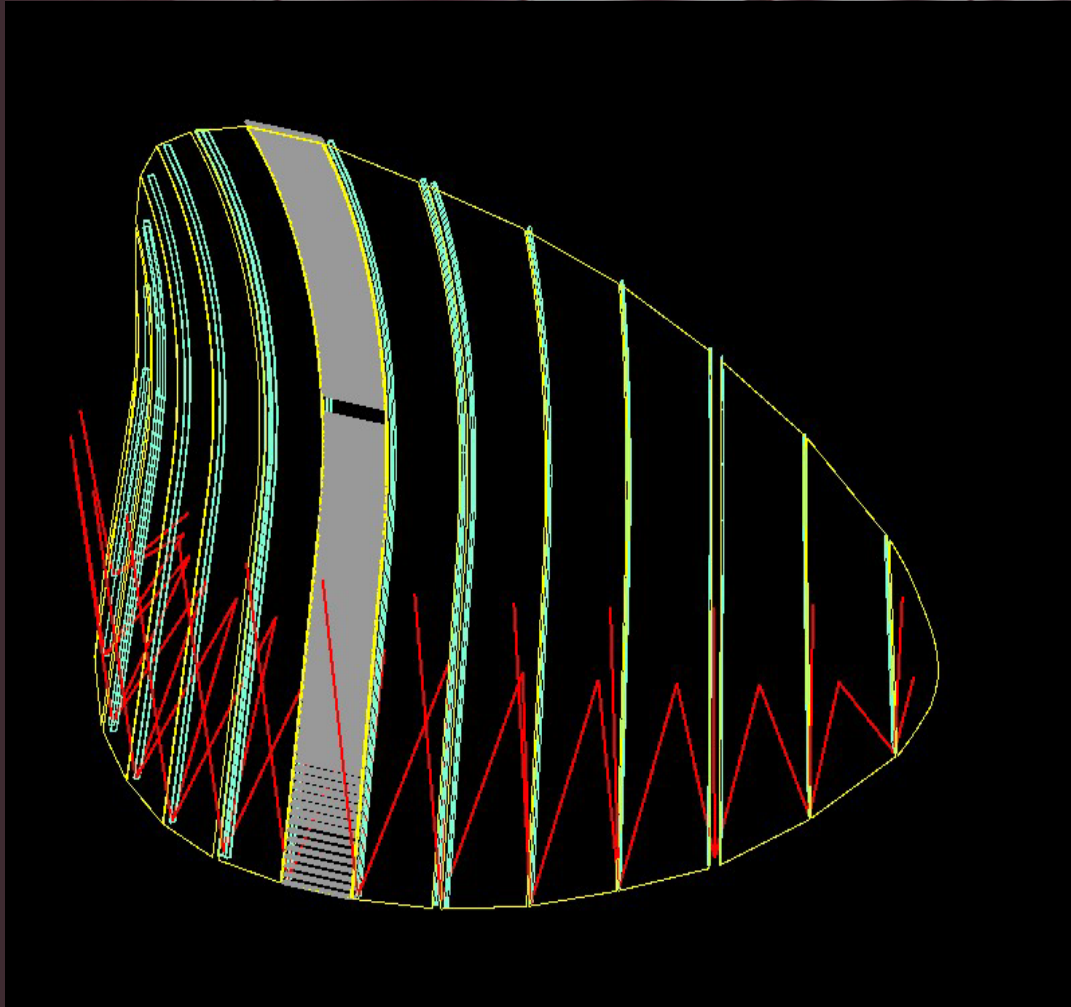


# VEIL – SCIENTIFICALLY DERIVED CURVATURE

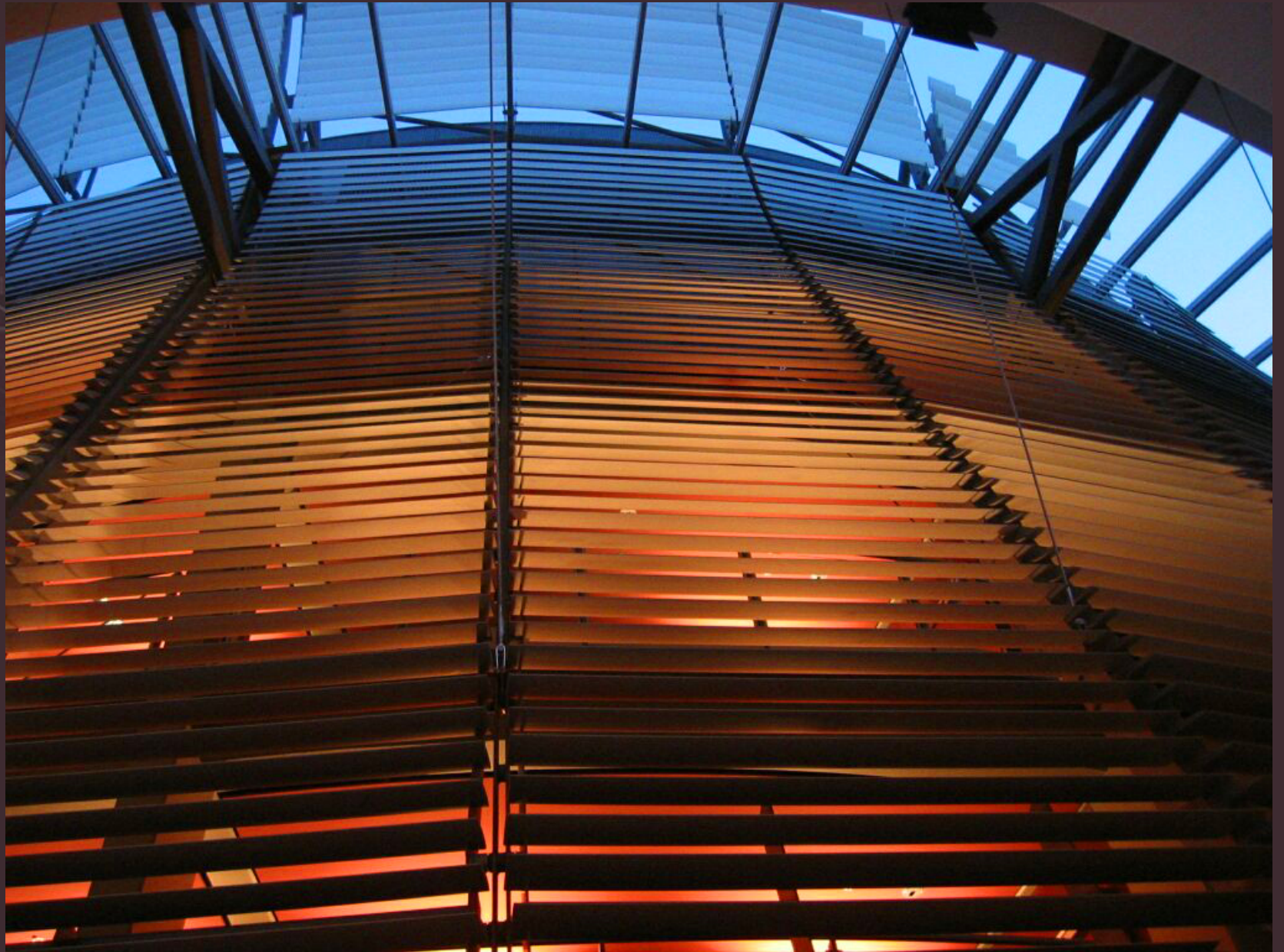




# VEIL – COMPLICATED GEOMETRY





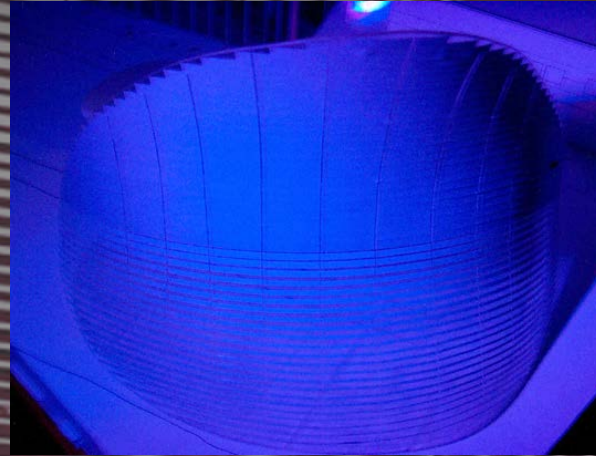








# NIGHT SCENE













# NATIONAL INSTITUTE OF DRAMATIC ARTS (NIDA)

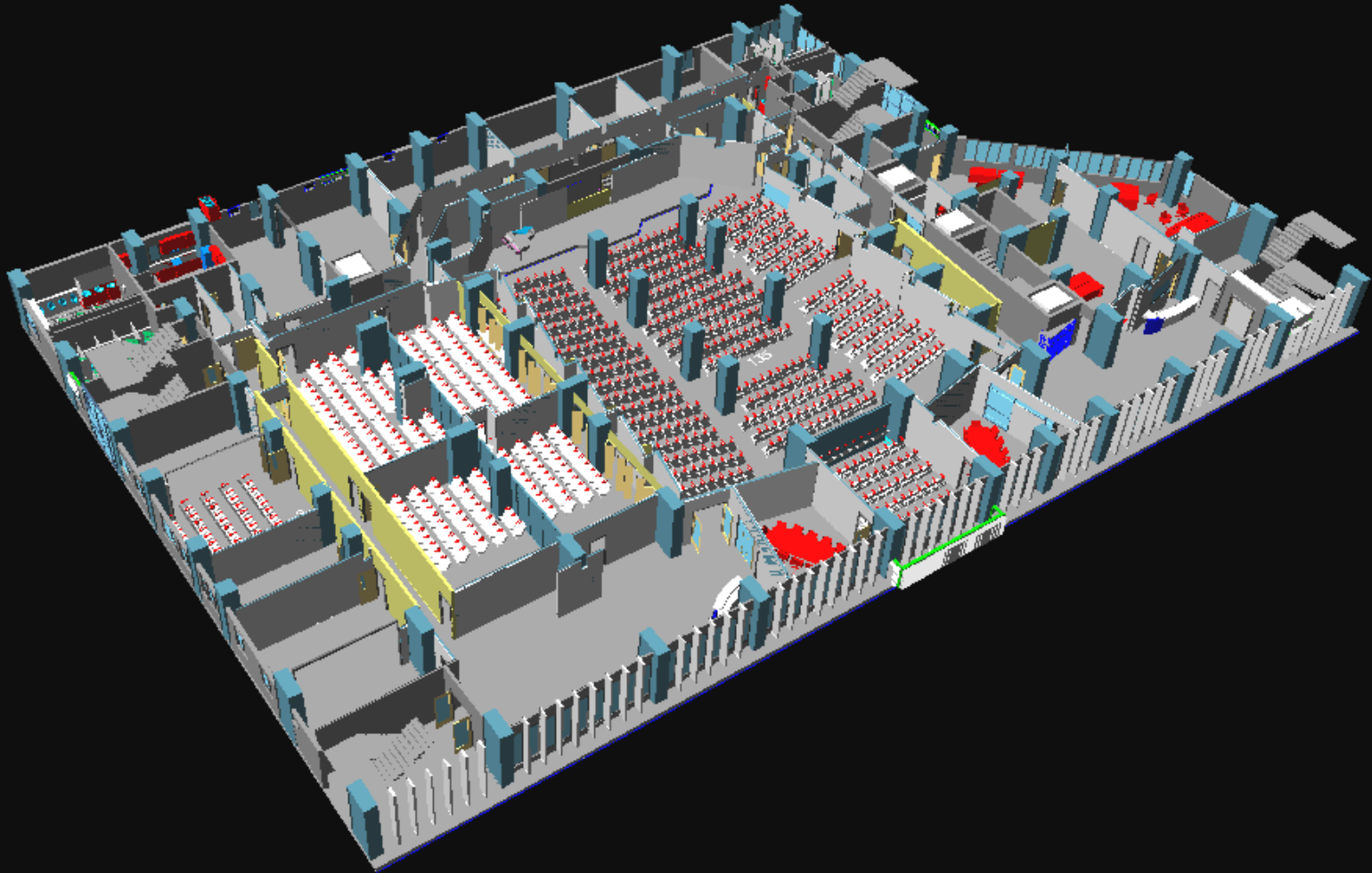
*RAIA (NSW) Sulman Award 2002*



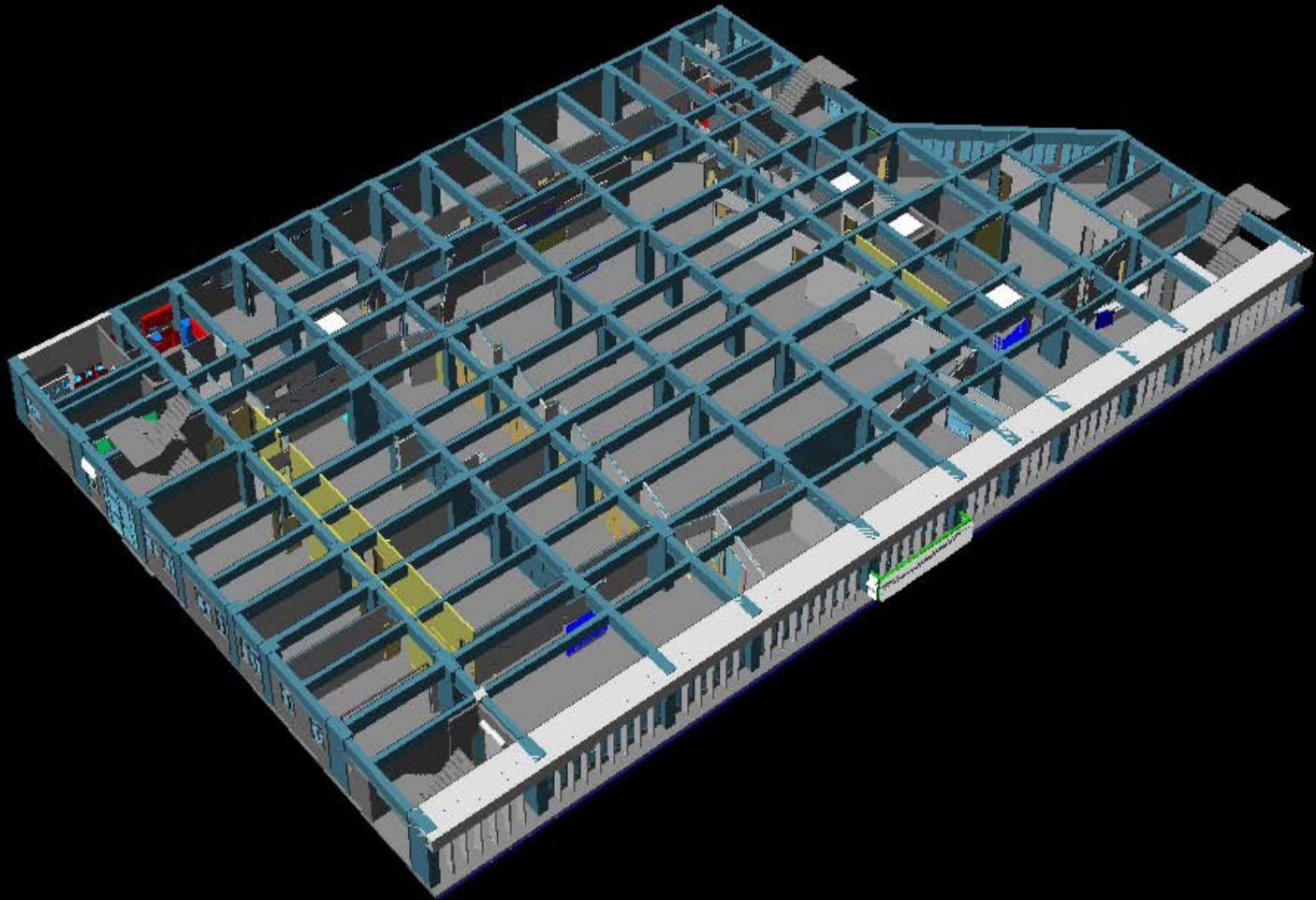


# EVANGELICAL FREE CHURCH OF CHINA

## WATERLOO HILL CHURCH

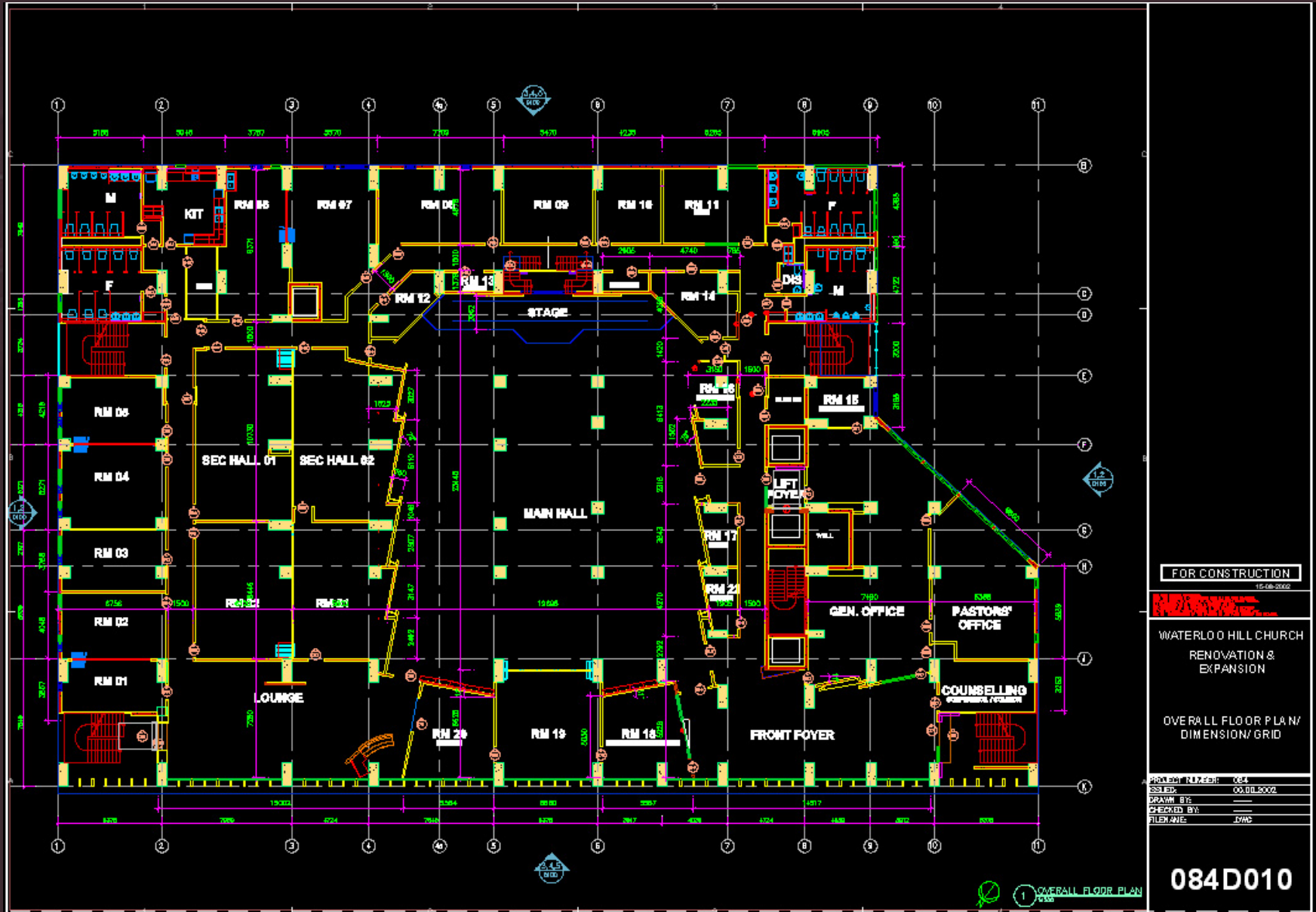


# STRUCTURAL CONSTRAINTS





# SELF GENERATED DOCUMENTATION – SIMPLE, VISUAL

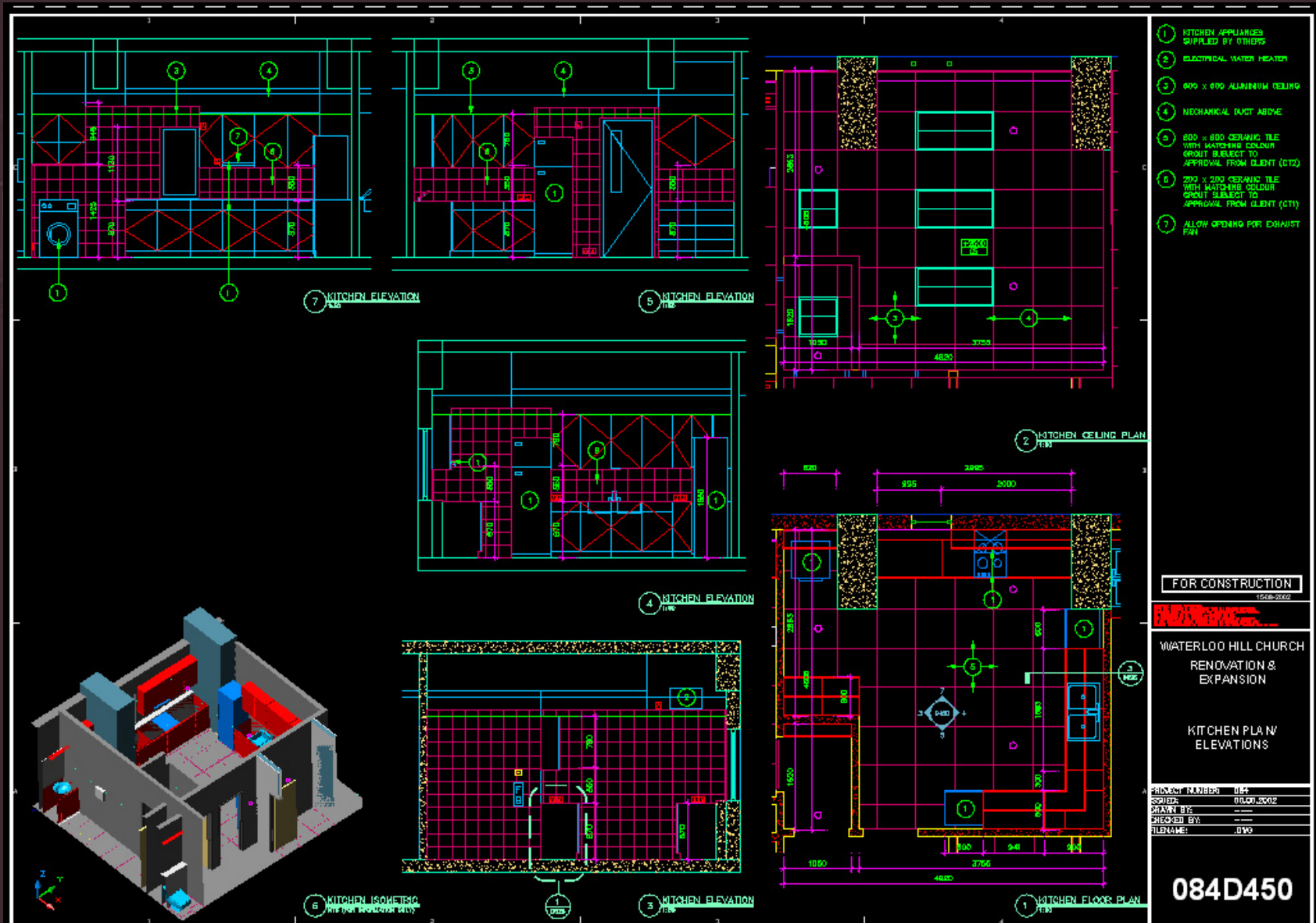


# SELF GENERATED DOCUMENTATION – SIMPLE, VISUAL





# SELF GENERATED DOCUMENTATION – SIMPLE, VISUAL







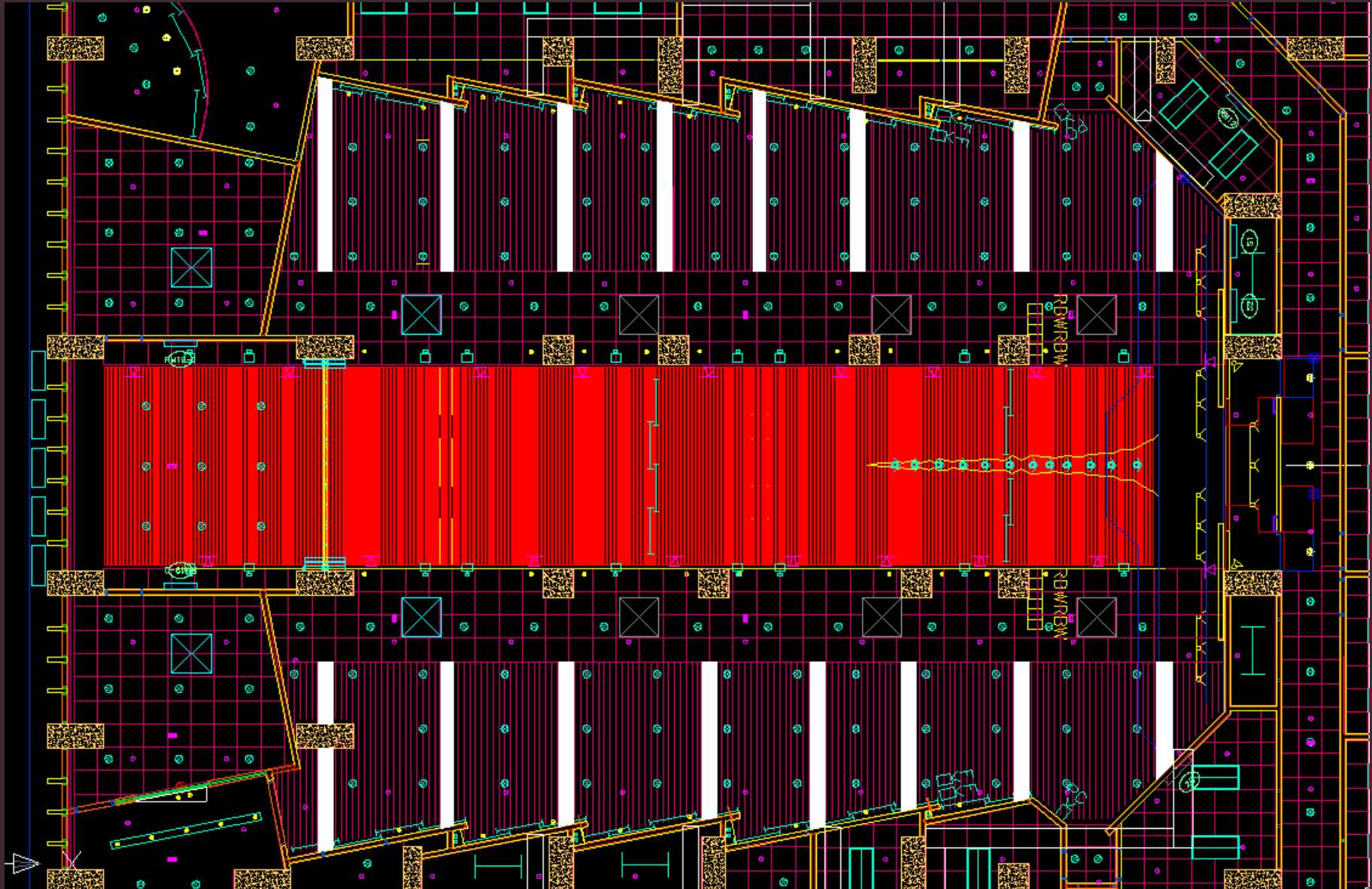






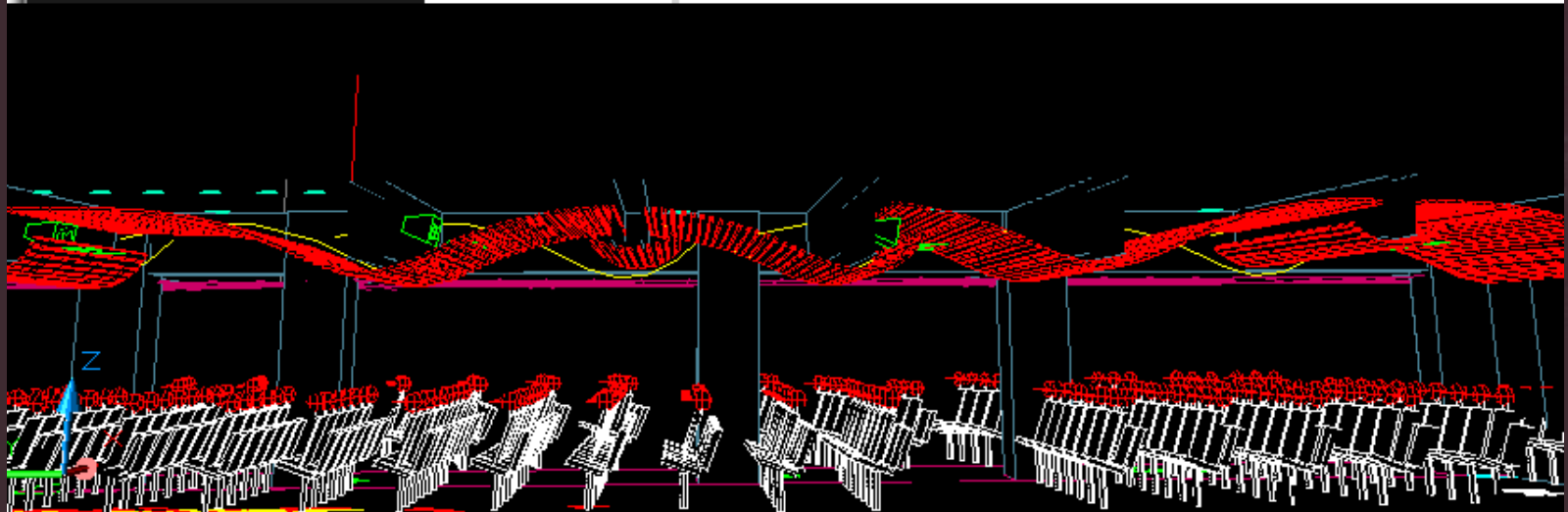
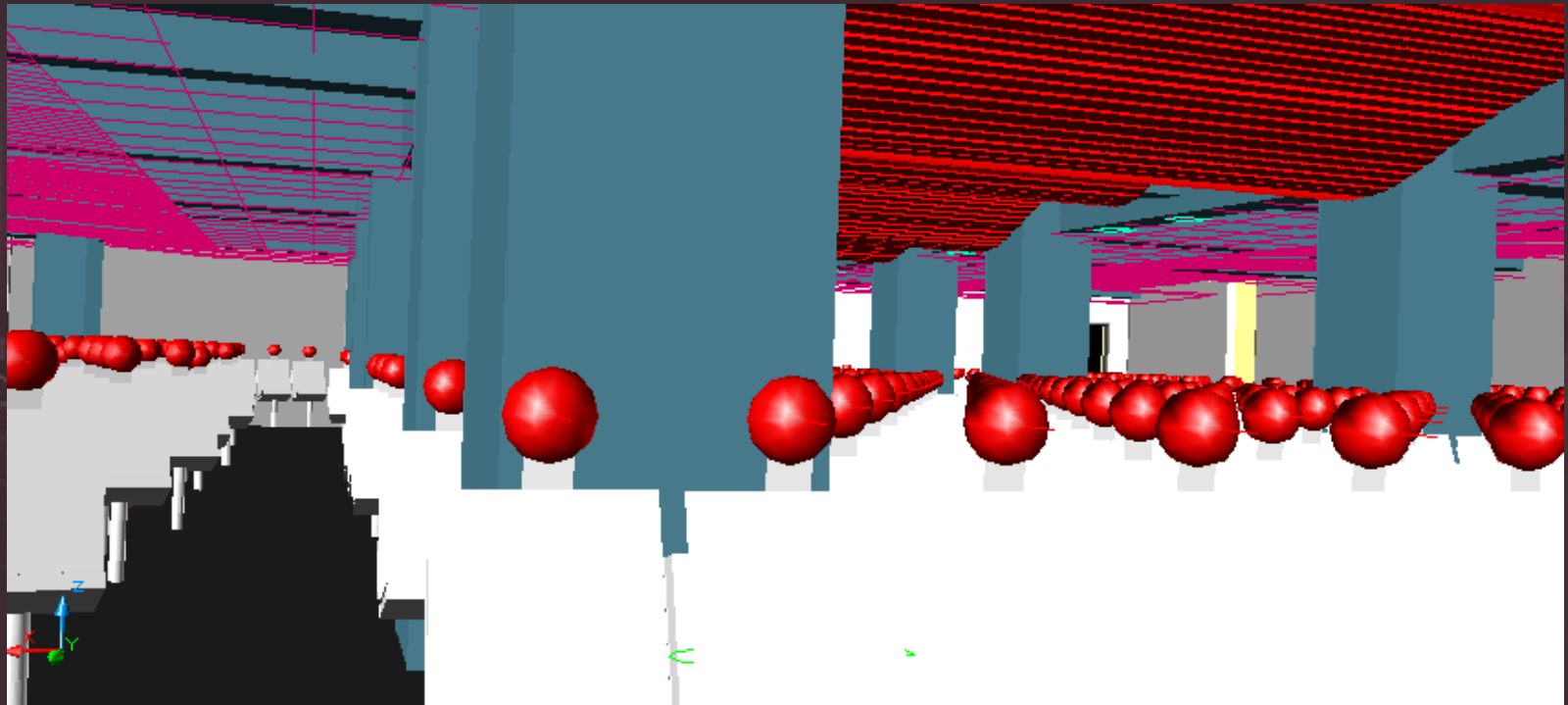


# MAIN HALL DESIGN





# MAIN HALL DESIGN

















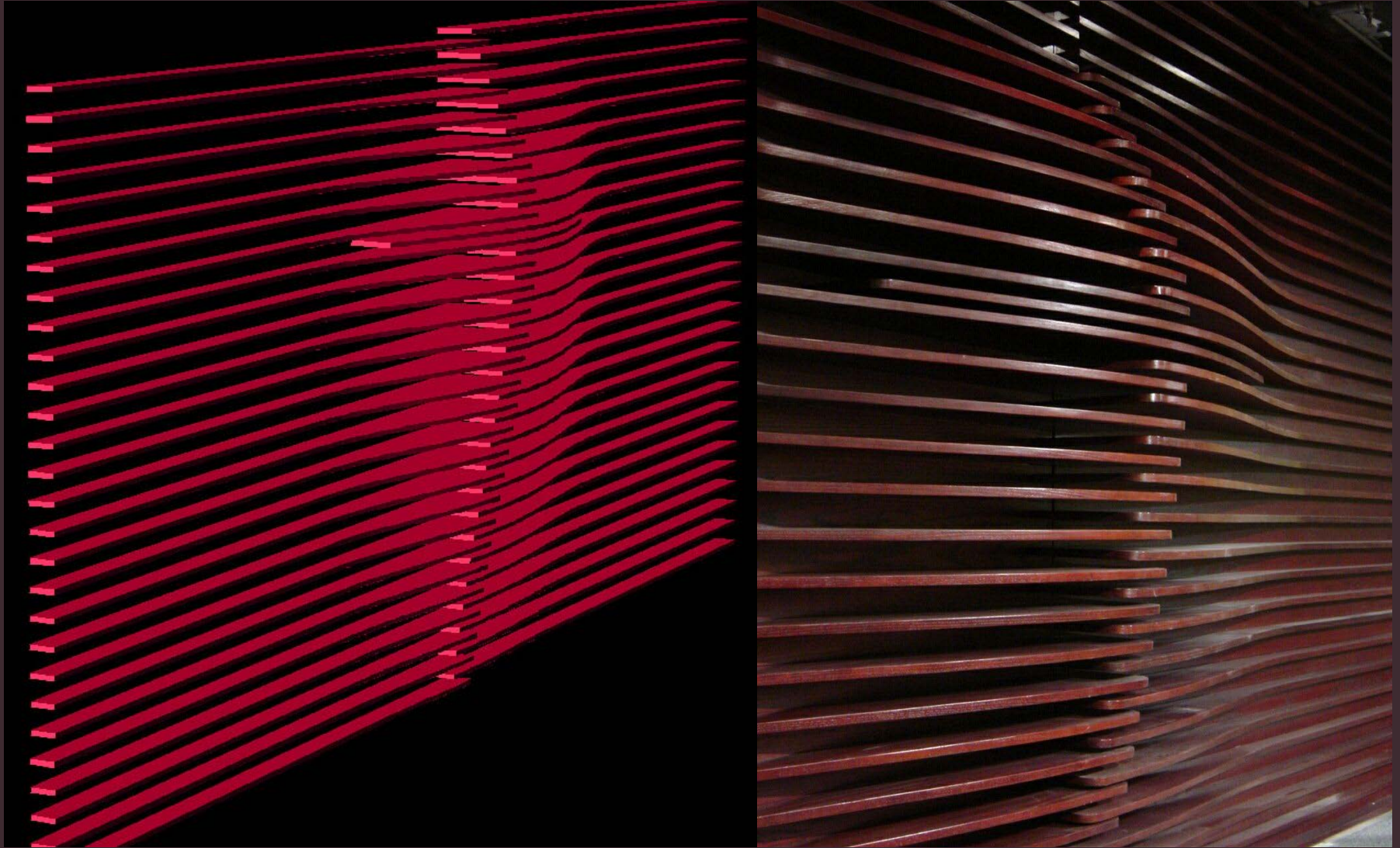


# WYSIWYG – What You See Is What You Get





# WYSIWYG – What You See Is What You Get

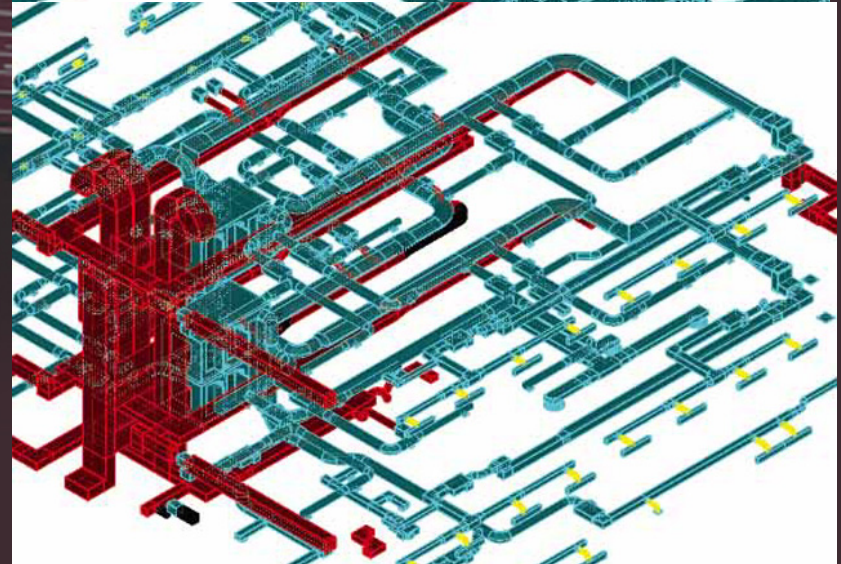
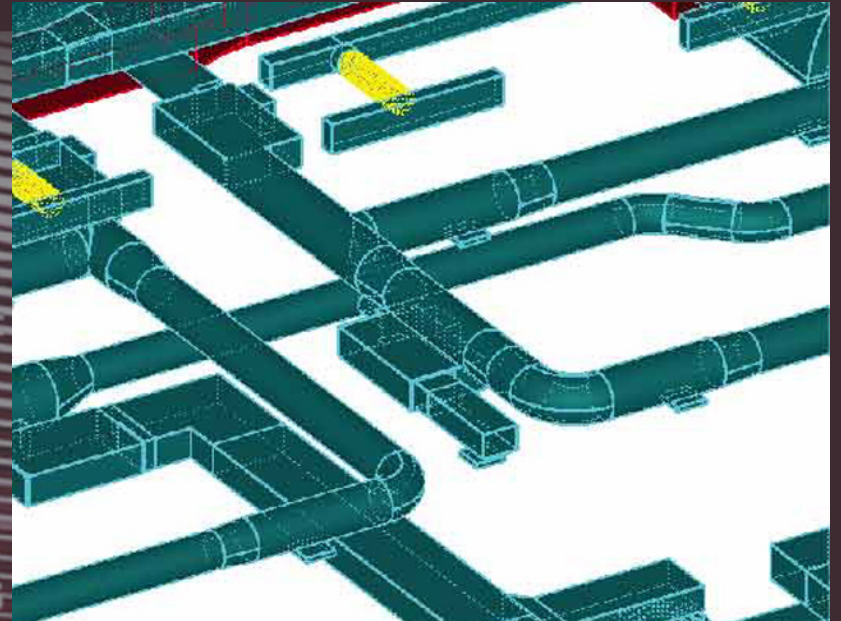
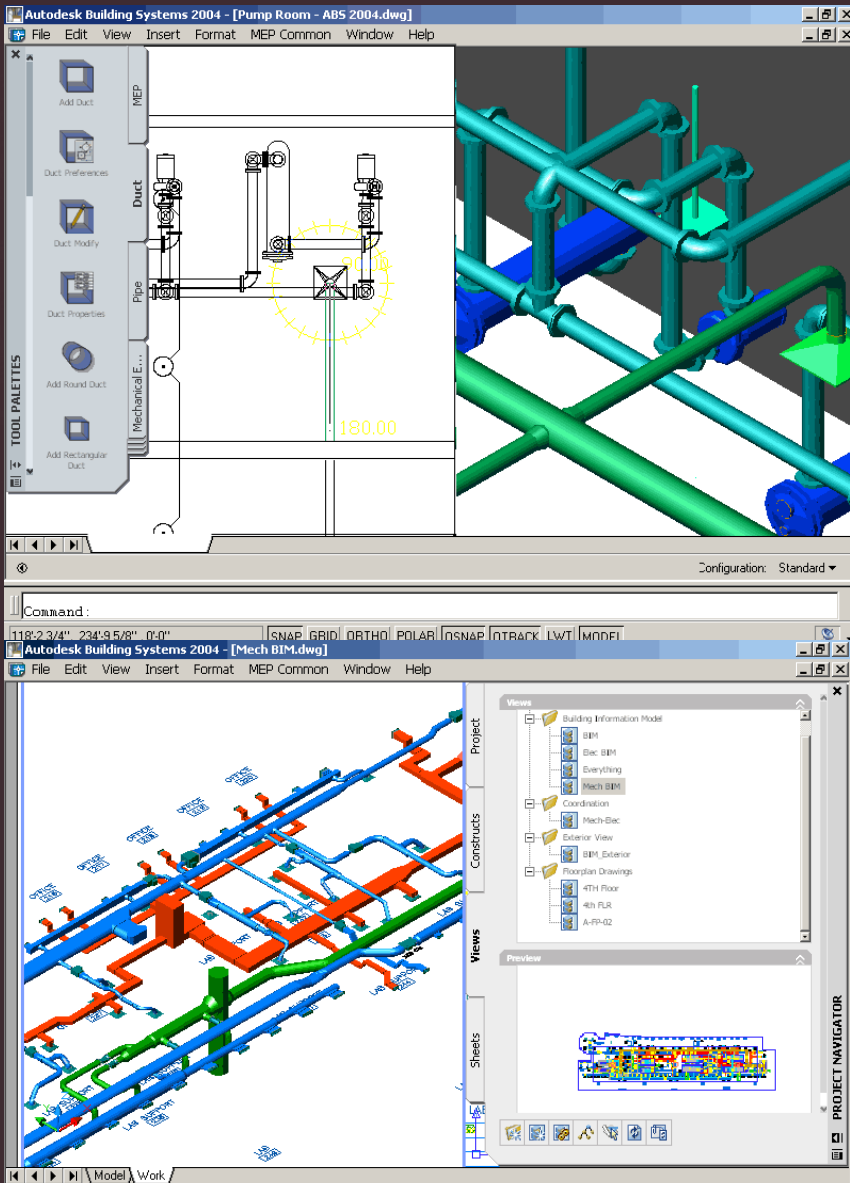




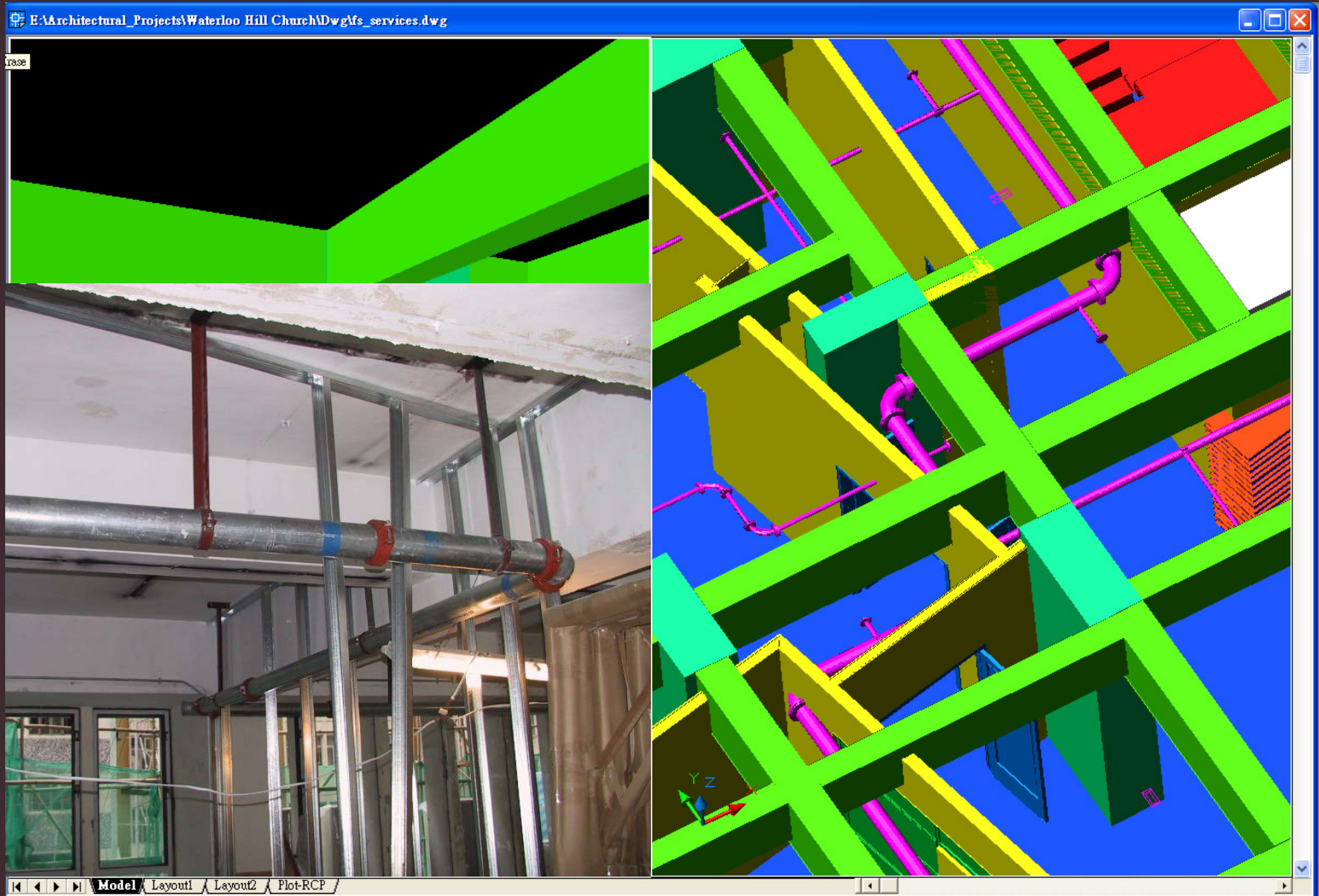
This is a detailed architectural floor plan of a building, likely a school or institutional structure. The plan is color-coded with green, yellow, and red lines. Key features include a central corridor system, numerous rectangular rooms, and specialized areas like a kitchen (K), bathroom (B), and storage (S). The plan also shows external features like a parking lot and a road.



# LATERAL PRODUCTS

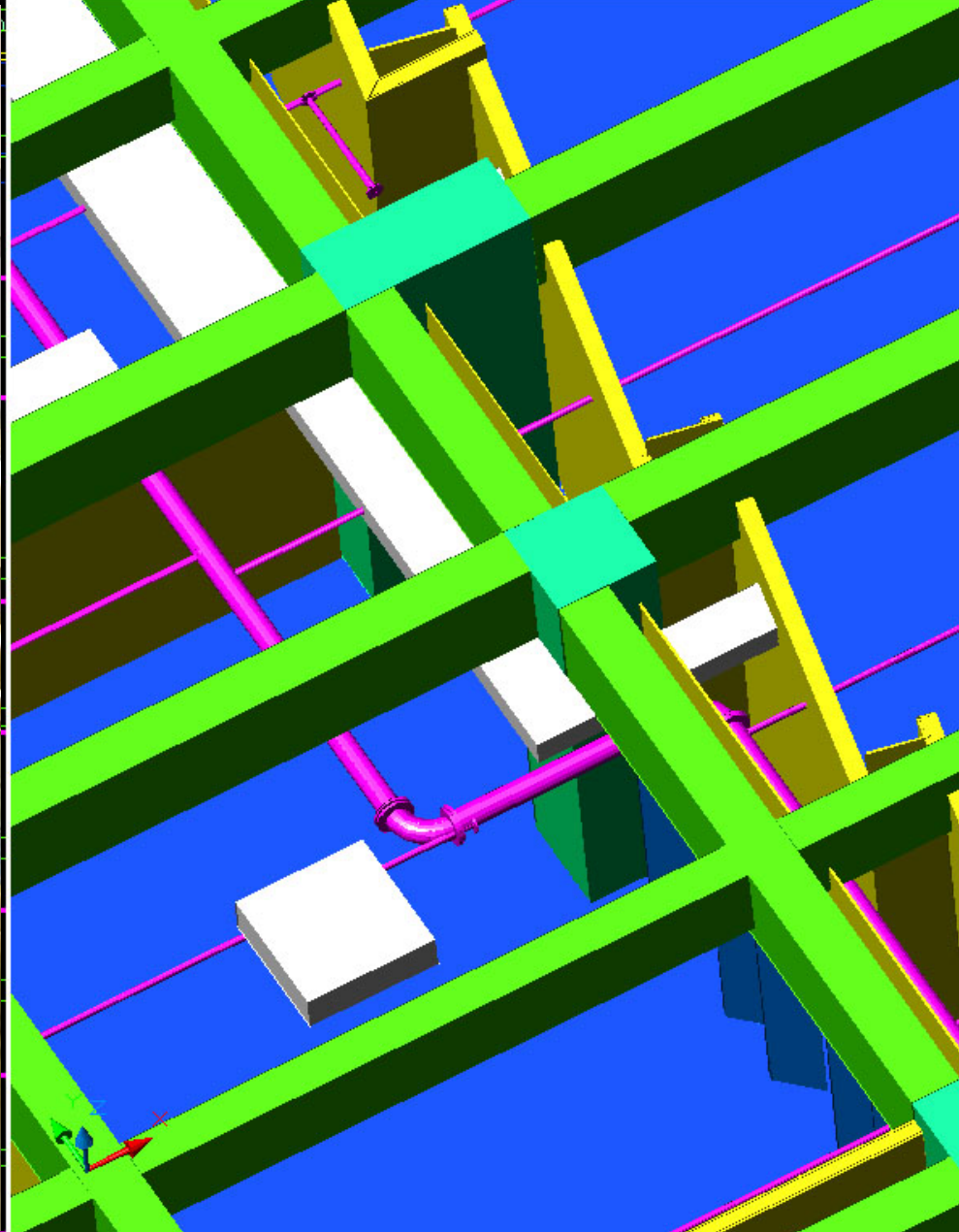


# CO-ORDINATION OF SERVICES





# CO-ORDINATION OF SERVICES



# SCHEDULES

Autodesk Architectural Desktop 3.3 - [E:\Architectural\_Projects\Waterloo Hill Church\dwg\plan\_1.00.dwg]

Edit View Insert Format Tools Draw Dimension Modify Image Concept Design Documentation Desktop Window Help

ByLayer ByLayer 0.05 mm

**RM 23 STORE1**

D 016

D 015

D 014


MARK	SIZE			MATL	FINISHES			LOUVER		MATL	EL	HEAD
	WD	HGT	THK		PULL	PUSH	GLAZING	WD	HGT			
?	1600	2260	25.4	---	?	?	?	0	0	GMS	F	?
001	PR 750	2200	6	GL	---	---	---	0	0	---	K	---
002	750	2100	40	HC	PL	PL	VP	0	0	TM	A	H1
003	750	2100	40	HC	PL	PL	VP	0	0	TM	A	H1
011	750	2100	40	HC	PL	PL	VP	0	0	TM	A	H1
012	750	2100	40	HC	PL	PL	---	0	0	TM	B	H1
013	900	2450	8	GL	---	---	---	0	0	SS	I	H8
014	PR 800	2100	40	GL	---	---	---	0	0	TM	D	H8
015	PR 800	2100	40	GL	---	---	---	0	0	TM	D	H8
016	750	2100	40	HC	PL	PL	---	0	0	TM	B	H1
017	750	2100	40	HC	PL	PL	---	0	0	TM	B	H1
018	600(1000)	2150	40	HC	PL	FB	VP	0	0	TM	L	H9
019	850	2450	40	HC	PL	PL	---	0	0	SS	B	H3
020	1600	2250	25.4	---	---	---	---	0	0	GMS	F	---
022	850(930)	2100	40	HC								
023	850	2100	40	SC								
024	PR 900	2100	40	SC								
025	850	2100	40	HC								
026	340(1240)	2100	40	HC								
027	750	2100	40	HC								
028	750	2100	40	HC								
029	750	2100	40	HC								
030	750	2100	40	HC								
031	750	2100	40	HC								
032	850	2100	40	HC								
033	850	2100	40	HC								
034	PR 750	2100	40	HC								
035	850	2100	40	HC								
036	850	2100	40	HC								
038	850	2100	40	HC								
039	850	2100	40	HC								

Model Space Mass-Group Work-3D Work-FLR Work-SEC Work-RCP Plot-FLR Plot-SEC Plot-RCP Template-C

objects:  
du ERASE  
d:

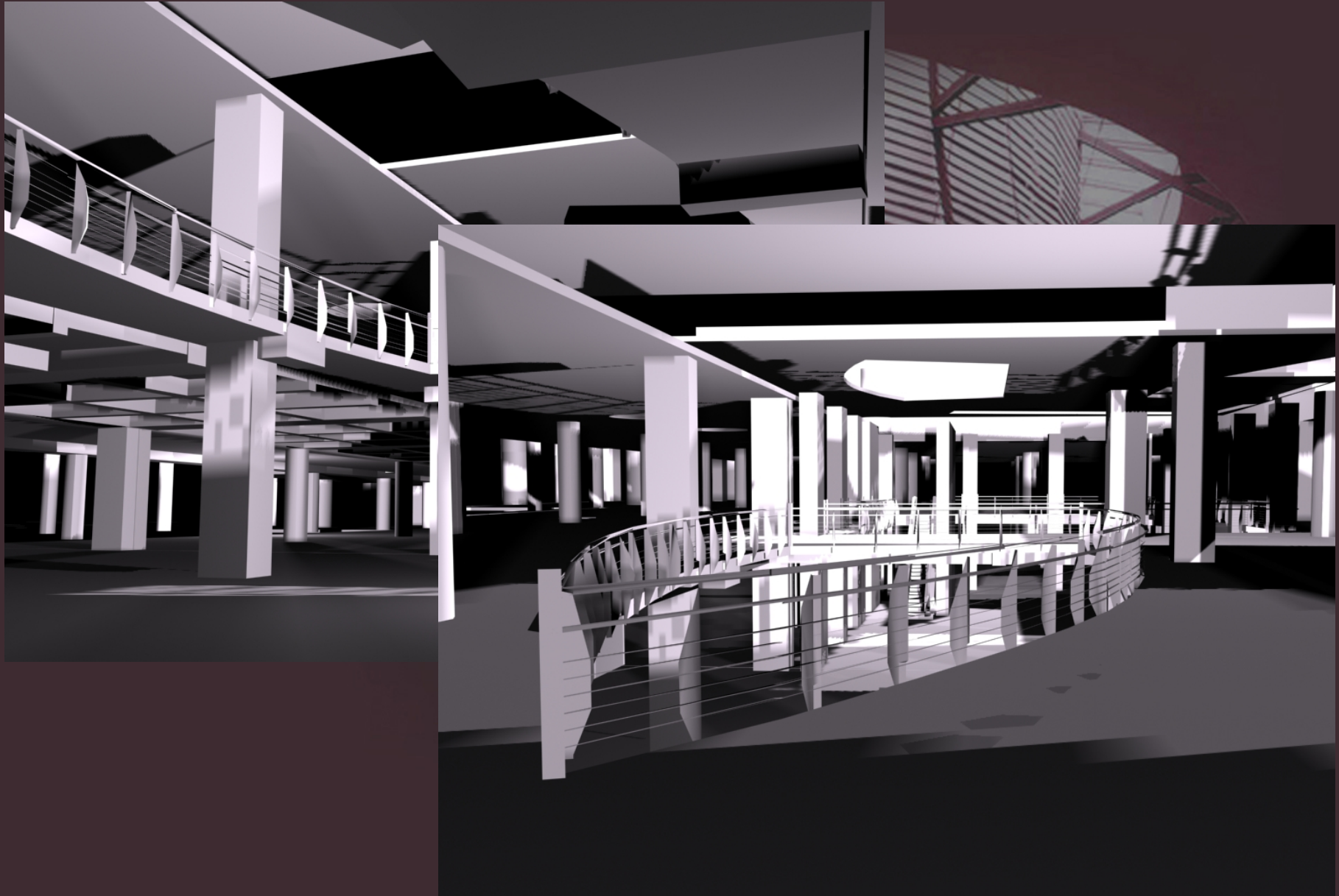
12, 40391.14, 0.00

SNAP GRID ORTHO POLAR OSNAP OTRACK LWT MODEL

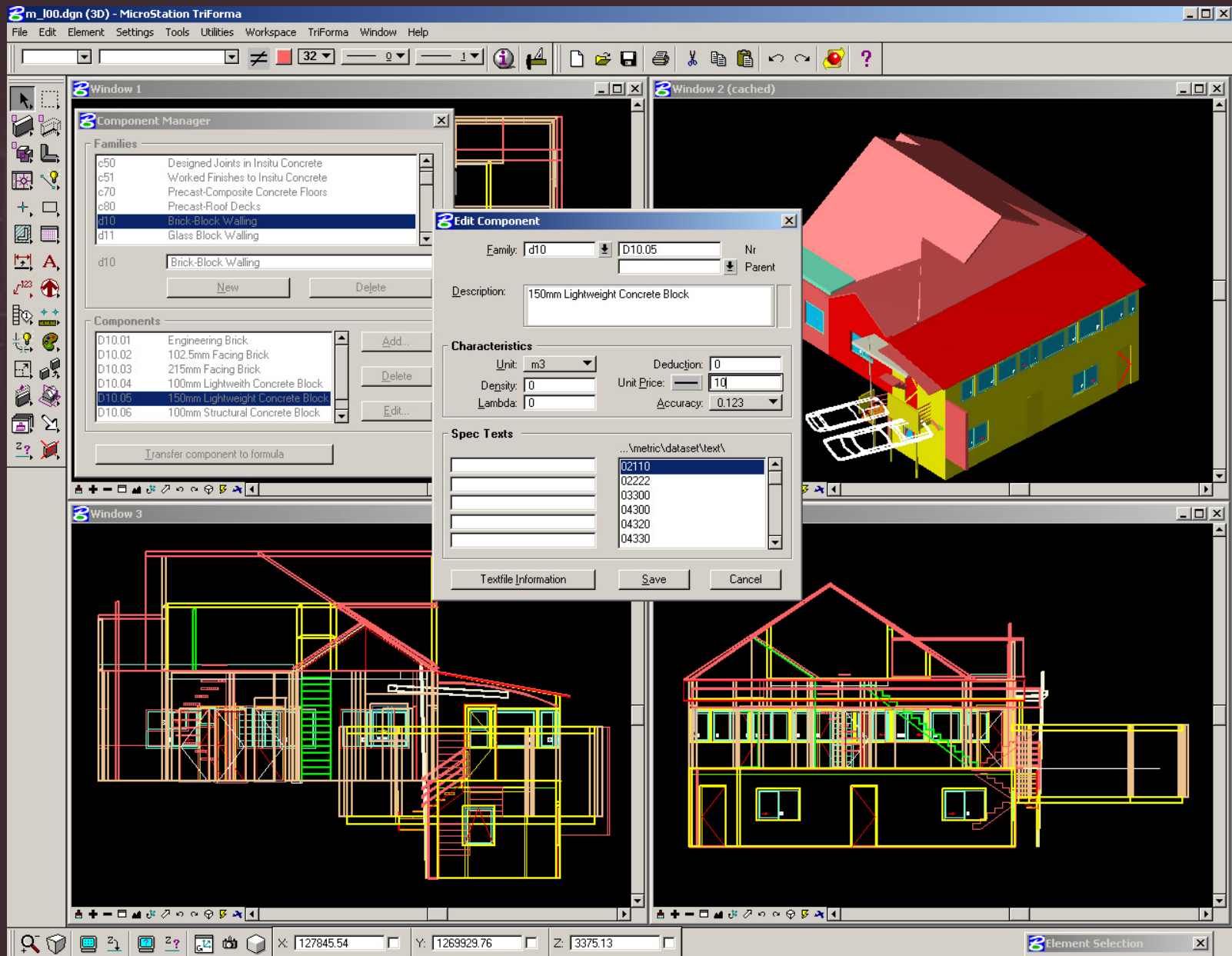




# QUICK RENDERED EXAMPLES FOR PRESENTATION

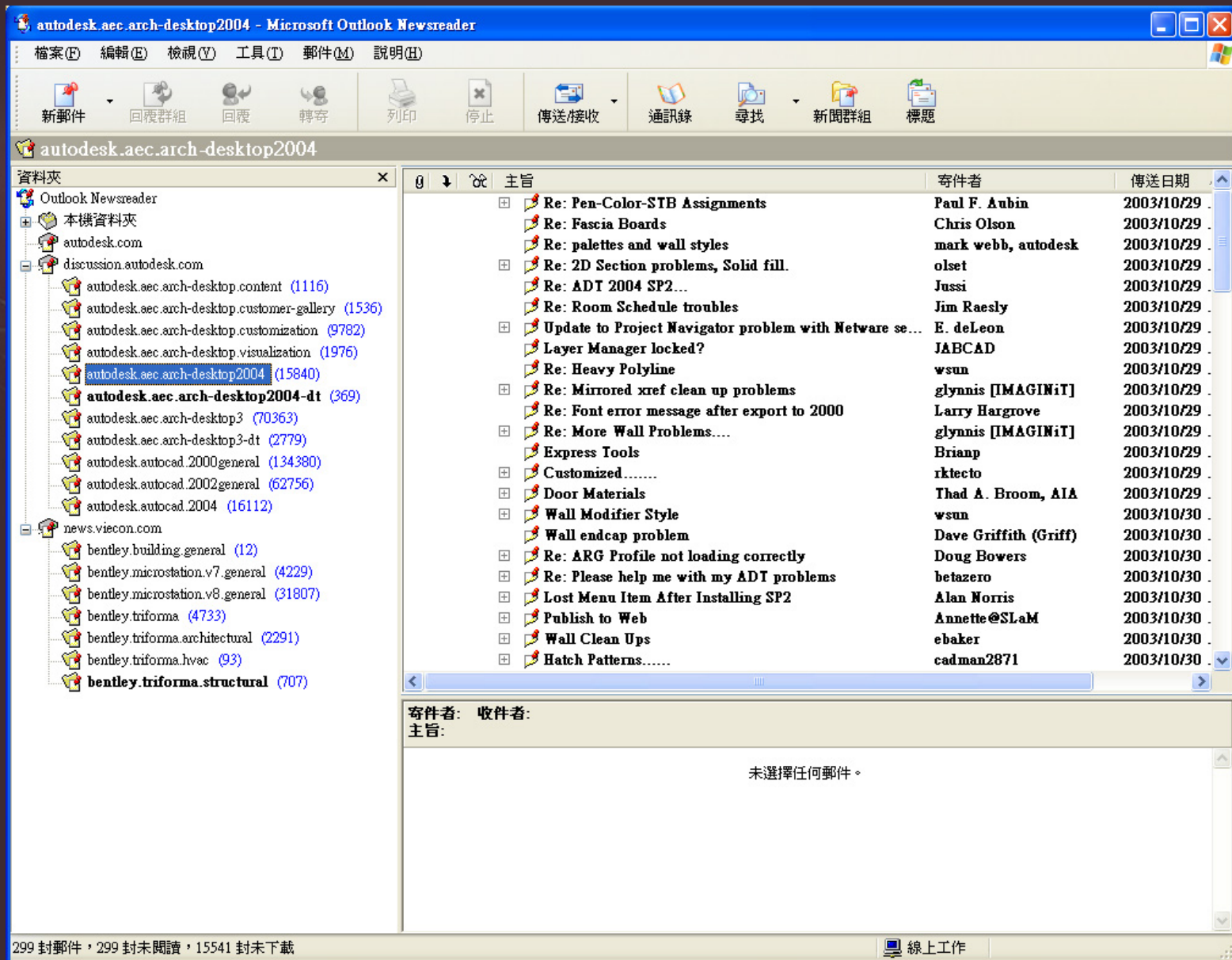


# COST





# WE ARE NOT ALONE!!!



# DEMONSTRATION





# 3D MODELLING IN BUILDING DESIGN IS.....

- Multiple Efficiency (Double productivity – easy!)
- WYSIWYG
- More Time in Design, Not Drafting
- Coherence in Information
- Collaboration among Disciplines
- Resolves Problem in Early Phase

.... the way to go!!!

# OBSTACLES in HONG KONG PRACTICE

- CAD = Computer Aided **DESIGN**,  
NOT Computer Aided Drafting
- Heavier Time Investment upfront vs Overall efficiency
- Resistance of downstream Disciplines
- Powerful Software vs Customized Industry Needs

.... End...!!!



