

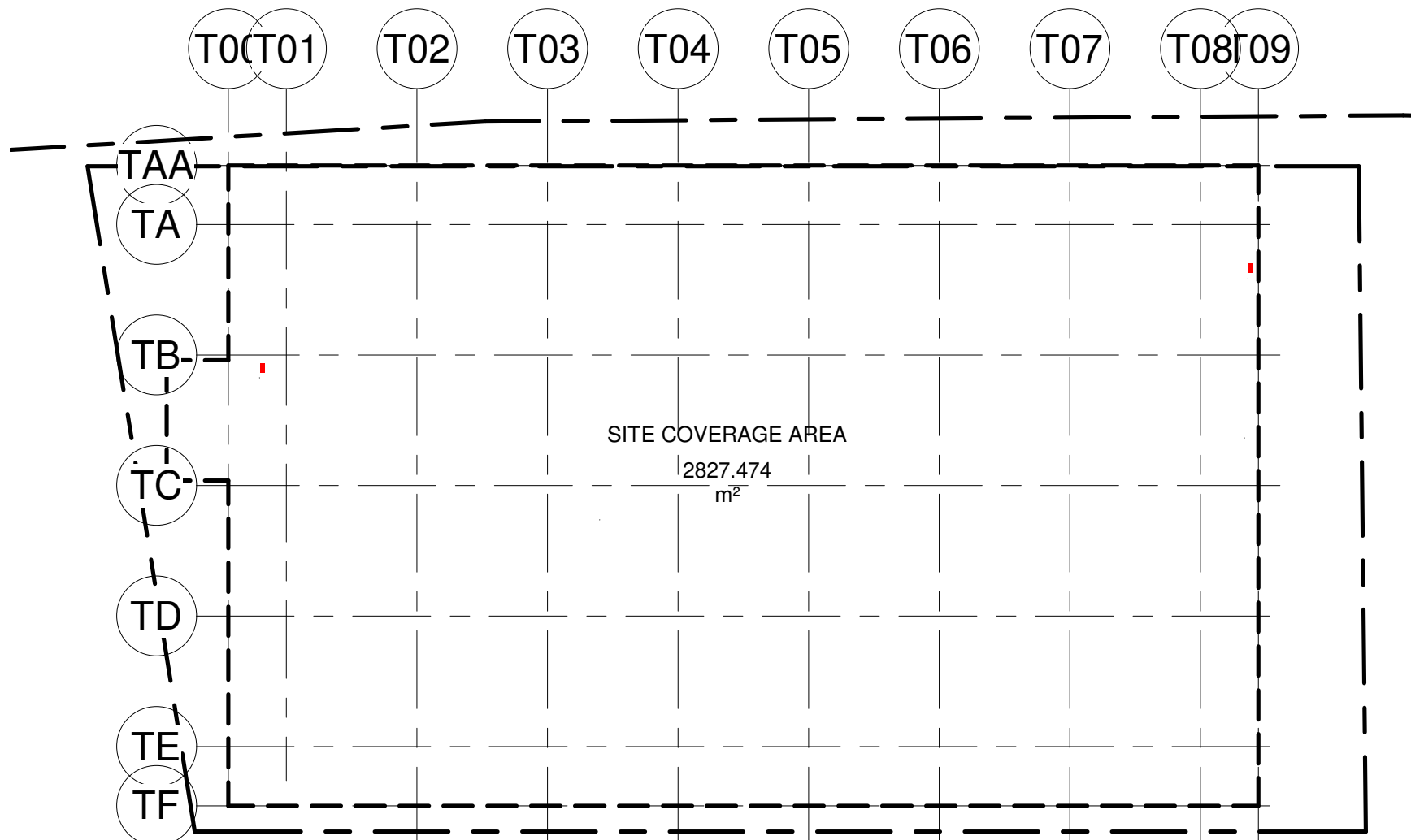
ALL DIMENSIONS AND LEVELS SHOWN ARE REFERRED TO THE STRUCTURE AND TO PRINCIPAL DATUM (P.D.), AND ARE IN MILLIMETRES UNLESS OTHERWISE STATED.







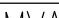
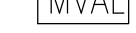
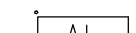


- THE FOLLOWING PLANS TO BE SUBMITTED SEPARATELY :
  - FOUNDATION
  - STRUCTURAL PLANS & R.C.C. CALCULATIONS AND DETAILS
  - DRAINAGE
  - GLASS WALL & CANOPY.
- ARTIFICIAL LIGHTING TO BE PROVIDED FOR THE AREAS WITHOUT NATURAL LIGHTING WHERE REQUIRED.
- MECHANICAL VENTILATION IS TO BE PROVIDED FOR THE PARKING AREAS. MECHANICAL VENTILATION WILL BE PROVIDED SUPPLEMENT FOR ANYWHERE WHILE NATURAL VENTILATION IS NOT EFFECTIVE.
- THE INTERNAL SURFACE OF EVERY LAVATORY SHALL BE GLAZED TILE OR OTHER NON-ABSORBENT MATERIAL UP TO CEILING HEIGHT.
- CLEAR HEADROOM OF NOT LESS THAN 4700mm IS TO BE PROVIDED FOR ALL LOADING/UNLOADING OF GOODS VEHICLES.
- HEADROOM FOR ALL STAIRCASES TO BE 2000mm MINIMUM. CLEARANCE FROM FINISHED FLOOR TO UNDERSIDE OF BEAM TO BE NOT LESS THAN 2300 MM FOR ALL USABLE AREAS.
- NOTES FOR THE FIRE RATED DOORS
  - DOORS TO STAIRCASES TO BE NOT LESS THAN -30/- FIRE RESISTANCE RATING, SELF-CLOSING TYPE UNLESS SPECIFIED OTHERWISE. DOORS AT STAIRCASE TO PROTECTED LOBBY, TO HAVE A TRANSPARENT UPPER PANEL OF REQUIRED FRR.
  - ALL FIRE DOORS INCLUDING FRAMES AND IRONMONGERIES TO BE CONSTRUCTED & CERTIFIED IN ACCORDANCE WITH BS 476: PARTS 20 & 22: 1987
  - DOORS OF PROTECTED LOBBY TO BE PROVIDED WITH SMOKE SEALS & TESTED IN ACCORDANCE WITH THE REQUIREMENTS AS STIPULATED UNDER E9.1 & E9.2 OF CoP FOR FIRE PROPERTIES OF BUILDING ELEMENTS AND COMPONENTS.
- ALL STAIRCASES TO HAVE HANDRAILS ON BOTH SIDES.
- ALL STAIRCASES TO HAVE RISERS NOT MORE THAN 175mm IN HEIGHT AND TREADS NOT LESS THAN 225mm IN WIDTH, AND ARE TO BE NATURALLY VENTILATED .
- FIRE ESCAPE STAIRCASES TO BE PROVIDED ARTIFICIAL LIGHTING AND EMERGENCY POWER SUPPLY.
- ALL BRICKWORK, CONCRETE OR MASONRY BLOCKWORKS SHOWN ARE TO BE BUILT IN 1:3 CEMENT MORTAR. ALL R.C. WORKS SHOWN ARE TO COMPLY WITH BUILDING (CONSTRUCTION) REGULATION 56(1).
- ALL LIFT LANDING DOORS ON OR ABOVE GROUND LEVEL TO HAVE -120/- FRR TO COMPLY WITH C9.1 OF FRC (FOR INTEGRITY).
- ALL FLAT ROOFS WILL BE FINISHED WITH CONCRETE TILE ON CEMENT/SAND SCREEDING ON WATERPROOFING MEMBRANE ON C/S SCREEDING LAID TO 1:100 FALL UNLESS OTHERWISE STATED.
- NOTES FOR BARRIER FREE ACCESS
  - PROVISIONS OF THE DISABLED SHALL COMPLY WITH THE "DESIGN MANUAL, BARRIER FREE ACCESS 2008" PUBLISHED BY BUILDINGS DEPARTMENT, HONG KONG GOVERNMENT.
  - LIFT MARKED "D" SHALL BE SUITABLE FOR USE FOR BARRIER-FREE ACCESS
  - DOORS, INCLUDING EACH LEAF OF A PAIR OF DOUBLE DOORS, SHALL HAVE A CLEAR WIDTH OF NOT LESS THAN 800mm & FOR DOORS OF ACCESSIBLE TOILETS, SHALL HAVE A CLEAR WIDTH OF NOT LESS THAN 900mm.
- LIFTS AND ESCALATORS (SAFETY) ORDINANCE TO BE COMPLIED WITH.
- BUILDINGS (VENTILATION SYSTEM) REGULATION TO BE COMPLIED WITH.
- ALL PARAPETS OR RAILINGS TO BE 1100MM MINIMUM ABOVE FINISHED FLOOR LEVEL.
- ALL WINDOWS PROVIDED AT GROUND FLOOR LEVEL TO BE 2500mm MIN. ABOVE GROUND.
- ILLUMINATED NOTICE SIGN FOR THE FIREMAN'S LIFT SHALL BE DISPLAYED AT CONSPICUOUS POSITION OUTSIDE THE BUILDING NEAR THE FIRE SERVICE ACCESS POINT.
- PROTECTIVE GUARDS TO BE INSTALLED AT ALL REQUIRED LOCATIONS FOR PROTECTION OF EXPOSED RUNNINGS OF HORIZONTAL OR VERTICAL PIPES/DUCTS FROM DAMAGE BY ANY MOVING VEHICLES OR OBJECTS.
- THE AGGREGATE AREA OF OPENABLE CURTAIN WALL TO BE PROVIDED NOT LESS THAN 6.25% OF THE "TOTAL USABLE AREA FOR OFFICE" ON EACH FLOOR.
- 450MM HT. SMOKE BARRIER WITH FRR OF NOT LESS THAN -30/- FROM CEILING SOFFIT TO BE PROVIDED FOR ALL INTERNAL VOIDS & INTERNAL STAIRCASE OF THE BUILDING.
- THE FORMATION OF EVA SHALL BE COMPLETED IN ACCORDANCE TO FIRE SAFETY CODE 2011 REQUIREMENTS PRIOR TO THE OCCUPATION OF THE BUILDING.
- ALL INTERNAL STAIRCASES WILL BE PROVIDED WITH ARTIFICIAL LIGHTING.
- PIPE DUCTS SHALL BE SEALED AT EACH FLOOR LEVEL WITH FIRE RESISTANCE MATERIAL WITH -60/- FRR WHERE COMPARTMENT VOLUME EXCEEDING 7000CU.M. , -120/- FRR SHALL BE PROVIDED.
- ALL NON-ACCESSIBLE FLAT ROOFS TO BE ACCESSED FOR MAINTENANCE BY MOVABLE LADDERS.
- THE GLAZING MATERIALS FOR THE CANOPY SHALL MEET THE FOLLOWING CRITERIA: - IT SHOULD NOT BE OF THE TYPE WHICH WILL MELT AND FORM BURNING DROPLETS UNDER FIRE SITUATION; AND - WHEN IT IS SHATTERED, NO SHARP AND HARMFUL PIECES ARE FORMED.
- STEEL FIXED LADDER / SEPARATE ACCESS SHALL BE PROVIDED TO LIFT PIT AT MORE THAN 1600 DEPTH BELOW FIRST LANDING.
- OFFICES NOT COMPLYING B(P)R 30 SHALL BE PROVIDED WITH ARTIFICIAL LIGHTING AND FRESH AIR SUPPLY OF MIN. 1.12m<sup>3</sup> OR 10L/PERSON. ROOMS CONTAINING SOIL OR WASTE FITMENTS NOT COMPLYING B(P)30 SHALL BE PROVIDED WITH MECHANICAL VENTILATION OF NOT LESS THAN 10 AIR CHANGES PER HOUR & ARTIFICIAL LIGHTING TO THE SATISFACTION OF ArchSD.
- MEMBERS FOR SUPPORT OF CURTAIN WALL ARE NOT ELEMENT OF CONSTRUCTION. NO FIRE RESISTANCE PERIOD FOR THE STEEL TRUSSES IS PROVIDED.
- ADDITIONAL SPRINKLER HEADS WILL BE PROVIDED ON EACH SIDE OF THE 240 MIN. FIRE RATED DOORS AND 120 MIN. & 240 MIN. FIRE SHUTTERS WITH MINIMUM 30 MIN. INSULATION TO MEET THE REQUIREMENTS AS STIPULATED IN ITEM I(2) RELATED TO CLAUSE C8.1 OF CORRIGENDUM TO THE COP FOR FIRE SAFETY IN BUILDINGS 2011.
- FIRE ALARM SYSTEM AUDIBLE TO ALERT PERSONS IN THE INNER ROOM OF ANY DANGER FROM FIRE OR SMOKE SHALL BE REQUIRED WHERE VISION PANELS ARE NOT PROVIDED ON DOORS/WALLS IN COMPLIANCE WITH PNAP APP-1/21.

(UNDER BUILDINGS (PLANNING) REGULATIONS)






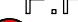
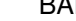
NOTIONAL SITE AREA	= 3445.208 M <sup>2</sup> (APPROX.)
CLASS OF SITE	= A
USE	= NON-DOMESTIC
MEAN STREET LEVEL	= (5.54+5.2)/2 = 5.37m P.D. ( A KUNG KOK STREET )
BUILDING HEIGHT	= 22.60 m - 5.37m = 17.23 m
MAX. NOTIONAL PLOT RATIO	= 3.2
ACTUAL TOTAL G.F.A.	= 9884.080 M <sup>2</sup>
ACTUAL PLOT RATIO	= 9884.080 / 3445.208
	= 2.869 < 3.2 ( PERMITTED )

- a. FIRE HYDRANT/HOSE REEL SYSTEM TO BE PROVIDED FOR THE ENTIRE BUILDING. THE SYSTEM TO BE INSTALLED IN ACCORDANCE WITH THE APRIL 2012 EDITION OF THE CODES OF PRACTICE FOR MINIMUM FIRE SERVICE INSTALLATIONS AND EQUIPMENT AND FSD CIRCULAR LETTER NO. 2/2013.
- a. HYDRANTS AND HOSE REELS TO BE PROVIDED TO ENSURE THAT EVERY PART OF THE BUILDING CAN BE REACHED BY A LENGTH OF NOT MORE THAN 30m OF FIRE SERVICES HOSE OR HOSE REEL TUBING.
- b. ONE 36000 LITRES F.S. WATER TANK TO BE PROVIDED AT R/F AS INDICATED ON PLANS.
- c. FIXED FIRE PUMP SET (DUTY/STANDBY/JOCKEY) TO BE PROVIDED AT R/F TO MAINTAIN A RUNNING PRESSURE OF 350-850 kPa WITH MINIMUM FLOW OF NOT LESS THAN 900 L/MIN FROM ANY TWO HYDRANT OUTLETS.
- d. ONE 2000 LITRES F.S. TRANSFER WATER TANK AND TWO F.S. TRANSFER PUMPS (DUTY/STANDBY) TO BE PROVIDED AT G/F AS INDICATED ON PLANS.
- e. AN INDEPENDENT F.S. INLET TO BE PROVIDED FOR EACH HYDRANT RISING MAIN. ALL F.S. INLETS TO BE INTERCONNECTED.
2. AN AUTOMATIC SPRINKLER SYSTEM TO BE PROVIDED AND INSTALLED IN ACCORDANCE WITH THE LPC SPRINKLER RULES BS EN 12845:2003 AND FSD CIRCULAR LETTERS NO. 3/2006 AND 3/2012. THE CLASSIFICATION OF THE OCCUPANCIES TO BE ORDINARY HAZARD GROUP 2 FROM G/F TO R/F.
- a. SPRINKLERS TO BE PROVIDED THROUGHOUT THE ENTIRE BUILDING INCLUDING STAIRCASES, COMMON CORRIDORS AND TOILETS EXCEPT E/M PLANT ROOMS, TRANSFORMER ROOM, LV SWITCH ROOM, ELV ROOMS, IT ROOMS, IT ROOMS, TBE & PABX ROOM, LIFT MACHINE ROOM, GENSER ROOM, F.S./SPRINKLER INLET & SPRINKLER CONTROL VALVE CABINET, CHECK METER CABINETS AND SERVICES DUCTS.
- b. ONE 84000 LITRES SPRINKLER WATER TANK TO BE PROVIDED AT R/F AS INDICATED ON PLANS (SPRINKLER ALARM SIGNALS TO BE LINKED TO THE F.S. COMMUNICATION CENTRE BY DIRECT TELEPHONE LINE).
- c. SPRINKLER PUMP SET (DUTY/STANDBY/JOCKEY) TO BE PROVIDED AT R/F TO SERVE THE SPRINKLER SYSTEM. THE SPRINKLER INSTALLATION WILL NOT EXCEED 45m.
- d. ONE 2000 LITRES SPRINKLER TRANSFER WATER TANK AND TWO SPRINKLER TRANSFER PUMPS (DUTY/STANDBY) TO BE PROVIDED AT G/F AS INDICATED ON PLANS.
- e. TWO SPRINKLER CONTROL VALVE SETS AND TWO SPRINKLER INLETS TO BE PROVIDED AT G/F AS INDICATED ON PLANS.
- f. ALL SPRINKLER ALARM SIGNALS TO BE TRANSMITTED TO THE MAIN FIRE ANNUNCIATOR PANEL LOCATED AT MAIN ENQUIRY COUNTER/RECEPTION/SECURITY DEPOT AT G/F.
3. A FIRE DETECTION AND ALARM SYSTEM TO BE PROVIDED IN ACCORDANCE WITH THE LPC RULES FOR AUTOMATIC FIRE DETECTION AND ALARM INSTALLATIONS AND BS 5839 : PART 1 : 2002 + A2 : 2008 AND FSD CIRCULAR LETTERS NO. 1/2009, 3/ 2010 AND 2/2012.
- a. HEAT DETECTORS TO BE PROVIDED FOR ALL E/M PLANT ROOMS, TRANSFORMER ROOM, LV SWITCH ROOM, ELV ROOMS, ELV ROOMS, IT ROOMS, TBE & PABX ROOM, LIFT MACHINE ROOM, GENSER ROOM AND IN AREAS NOT COVERED BY SPRINKLER INSTALLATION EXCEPT F.S./SPRINKLER INLET & SPRINKLER CONTROL VALVE CABINET, CHECK METER CABINETS AND SERVICES DUCTS.
- b. BREAKGLASS UNITS AND FIRE ALARM BELLS TO BE LOCATED AT ALL HOSE REEL POINTS. THE MANUAL FIRE ALARM SYSTEM TO BE INCORPORATED IN THE FVHR SYSTEM AND INSTALLED AS AN INTEGRAL PART OF THE FIRE DETECTION SYSTEM.
- c. ONE MAIN FIRE ANNUNCIATOR PANEL TO BE PROVIDED AT MAIN ENQUIRY COUNTER/RECEPTION/SECURITY DEPOT AT G/F TO RECEIVE ALL FIRE ALARM SIGNALS OF THE ENTIRE BUILDING.
- d. ALL FIRE ALARM SIGNALS INCLUDING FIRE DETECTORS, FLOW SWITCHES AND BREAKGLASS UNITS TO BE LINKED TO THE F.S. COMMUNICATION CENTRE BY A DIRECT TELEPHONE LINE.
- e. VISUAL ALARM SIGNALS (FLASHING RED LIGHTS) TO BE PROVIDED AND BE LOCATED AT A PROMINENT LOCATION IN PLACES WHICH ARE INTENDED TO BE ACCESSIBLE TO THE PUBLIC. THE VISUAL ALARM SIGNALS TO BE INSTALLED IN ACCORDANCE WITH THE FSD CIRCULAR LETTERS NO. 4/2001 AND 2/2012, BS 5839 : PART 1 : 2002 + A2 : 2008 AND BARRIER FREE ACCESS 2008.
4. PORTABLE FIRE EXTINGUISHERS/SAND BUCKETS TO BE PROVIDED AT ALL E/M PLANT ROOMS, TRANSFORMER ROOM, LV SWITCH ROOM, TBE ROOMS AND CAR PARKING AREAS.
5. NO VAC CONTROL SHALL BE PROVIDED AS EACH AIR DISTRIBUTION DUCTWORK SYSTEM DOES NOT EXCEED 1000 L/s AND INDIVIDUAL PLANT ROOMS ARE MECHANICALLY VENTILATED DIRECTLY TO OUTSIDE.
6. AN INDEPENDENT EMERGENCY GENERATOR OF SUFFICIENT CAPACITY TO BE PROVIDED TO MEET THE FSI LOADS DURING SHORTAGE OF UTILITY MAINS.
7. EMERGENCY LIGHTING TO BE PROVIDED THROUGHOUT THE ENTIRE BUILDING AND ALL EXIT ROUTES LEADING TO THE GROUND LEVEL. (EMERGENCY LIGHTING SHALL COMPLY WITH BRITISH STANDARD 5266 - 1 : 2011 AND BS EN 1838 : 1999 COMPLETED WITH SELF-CONTAINED 2 HOURS BATTERY AND CHARGER KIT.)
8. SUFFICIENT DIRECTIONAL EXIT SIGNS COMPLY TO BS 5499, BS 5266 AND FSD CIRCULAR LETTER NO. 5/2008 AND COMPLETED WITH SELF-CONTAINED 2 HOURS BATTERY AND CHARGER KIT TO BE PROVIDED TO ENSURE THAT ALL EXIT ROUTES FROM ANY FLOOR WITHIN THE BUILDING ARE CLEARLY INDICATED AS REQUIRED BY THE CONFIGURATION OF STAIRCASES SERVING THE BUILDING.
9. FIREMAN'S LIFT AS MARKED 'A' TO BE PROVIDED AS INDICATED ON PLANS.
10. ALL LININGS FOR ACOUSTIC AND THERMAL INSULATION PURPOSES IN DUCTINGS AND CONCEALED LOCATIONS TO BE OF CLASS 1 OR 2 RATE OF SURFACE SPREAD OF FLAME AS PER BRITISH STANDARD 476: PART 7 OR ITS INTERNATIONAL EQUIVALENT, OR BE BROUGHT UP TO THAT STANDARD BY USE OF AN APPROVED FIRE RETARDANT PRODUCT.
11. ALL LININGS FOR ACOUSTIC, THERMAL INSULATION AND DECORATIVE PURPOSES WITHIN PROTECTED MEANS OF ESCAPE TO BE OF CLASS 1 OR 2 RATE OF SURFACE SPREAD OF FLAME AS PER BRITISH STANDARD 476: PART 7 OR ITS INTERNATIONAL EQUIVALENT, OR BE BROUGHT UP TO THAT STANDARD BY USE OF AN APPROVED FIRE RETARDANT PRODUCT.
12. NO STORAGE OR USE OF DANGEROUS GOODS AS DEFINED IN CHAPTER 295 OF THE LAWS OF HONG KONG TO BE NOTIFIED TO THE DIRECTOR OF FIRE SERVICES.
13. AUDIO/VISUAL ADVISORY SYSTEM WILL NOT BE PROVIDED AS ANY ONE SINGLE OCCUPANCY ON ANY ONE FLOOR DOES NOT EXCEED 2000m<sup>2</sup>.
14. SMOKE EXTRACTION SYSTEM WILL NOT BE PROVIDED AS THE AGGREGATE AREA OF OPENABLE WINDOWS OF THE COMPARTMENT EXCEED 6.25% OF THE FLOOR AREA OF THAT COMPARTMENT.



- |   |  |   |                           |
|---|--|---|---------------------------|
|   | EXIT SIGN                                    |   | BOUNDARY LINE             |
|  | DIRECTIONAL EXIT SIGN                        |  | FIRE SERVICE ACCESS POINT |
|  | ARTIFICIAL LIGHTING & MECHANICAL VENTILATION |   |                           |
|  | ARTIFICIAL LIGHTING                          |   |                           |
|  | PIPE DUCT                                    |   |                           |
|  | PROPOSED STRUCTURE FLOOR LEVEL MARK          |   |                           |
|  | PROPOSED FINISHED FLOOR LEVEL MARK           |   |                           |
|  | EXISTING LEVEL FLOOR MARK                    |   |                           |
|  | SURFACE CHANNEL                              |   |                           |

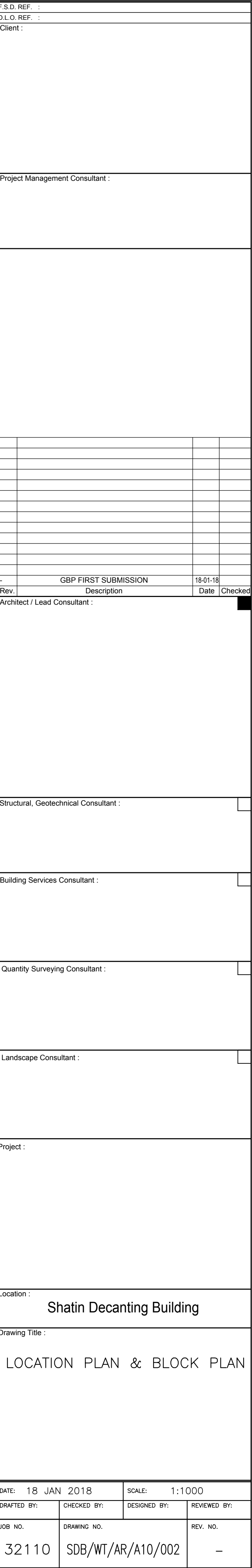
- |            |  |
|------------|--|
| <b>D1</b>  | -/60/60 FRR SELF-CLOSING DOOR W/ VISION PANEL AND SMOKE SEAL           |
| <b>D2</b>  | -/60/60 FRR SELF-CLOSING DOOR W/ SMOKE SEAL                            |
| <b>D3</b>  | -/120/120 FRR SELF-CLOSING DOOR W/ SMOKE SEAL                          |
| <b>D4</b>  | - / - / - SELF-CLOSING DOOR W/ VISION PANEL                            |
| <b>D23</b> | -/60/60 FRR DOOR / ACCESS PANEL W/ SMOKE SEAL<br>(600W. X 2000H. MIN.) |

- |   |  |   |   |
|---|--|---|---|
|  | FIREMAN'S LIFT                                     |  | 2 NOS.OF SAND BUCKET                        |
|  | BARRIER-FREE LIFT                                  |  | FIRE HYDRANT                                |
|  | 4.5 Kg CO <sub>2</sub> FIRE EXTINGUISHER           |  | HOSE REEL WITH MANUAL FIRE ALARM CALL POINT |
|  | 9 LITRES WATER / CO <sub>2</sub> FIRE EXTINGUISHER |   |   |

- |   |  |
|---|--|
|    | BRICK  |
|    | CONCRETE SLAB (LIGHTER WASH)                     |
|    | CONCRETE (PLAIN OR REINFORCED)                   |
|  | SOLID CONCRETE BLOCK                             |
|  | HOLLOW CONCRETE BLOCK                            |
|  | LIGHTWEIGHT PARTITION                            |
|  | PLASTER OR CEMENT RENDERING                      |
|  | MOSAIC OR OTHER NON-ABSORBENT FLOOR / WALL TILES |
|  | GLASS  |
|  | TIMBER   |
|  | METAL WORK OR STEEL                              |
|  | STONE FINISH                                     |
|  | SANITARY FITTINGS                                |
|  | BARRIER - FREE PROVISION                         |
|  | EARTH (UNEXCAVATED)                              |
|  | EXISTING STRUCTURE                               |
|  | EXISTING WOOD DECK                               |

[illegible]

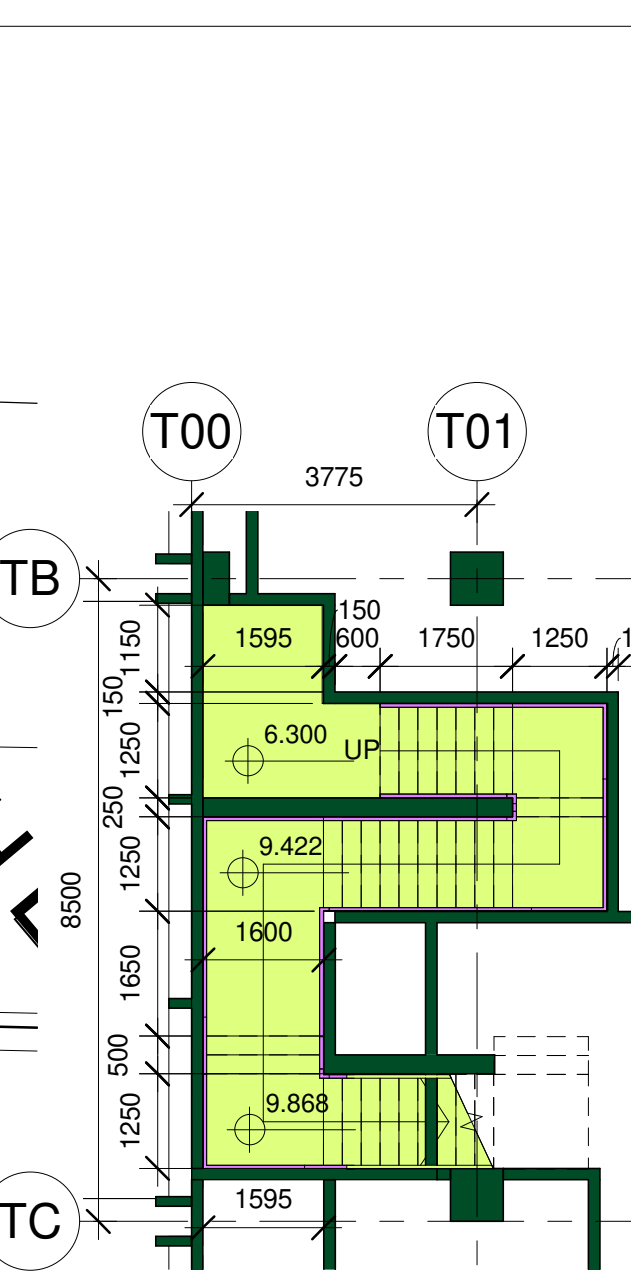




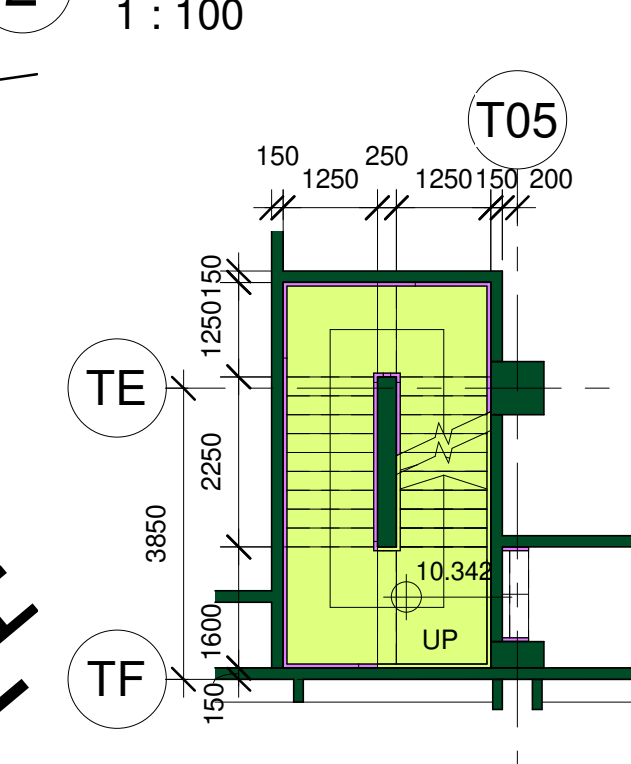




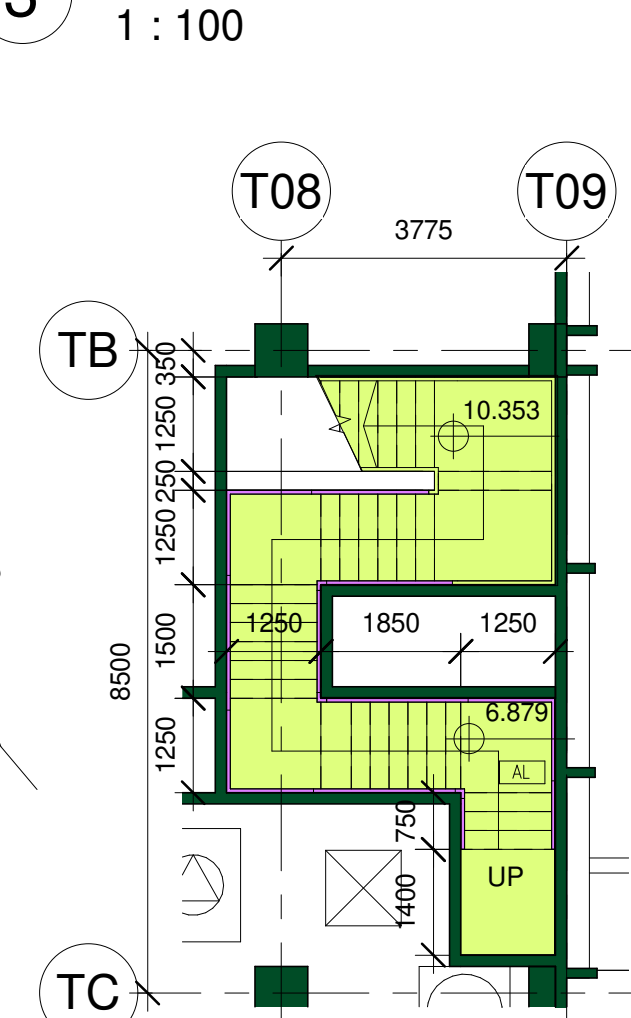
1 GROUND FLOOR PLAN  
1 : 100



2 (ST-01) PART PLAN  
1 : 100



3 (ST-02) PART PLAN  
1 : 100



4 (ST-03) PART PLAN  
1 : 100

# Jockey Club Centre for Positive Ageing

Project Management Consultant:		
Structural, Geotechnical Consultant:		
Building Services Consultant:		
Quantity Surveying Consultant:		
Landscape Consultant:		
Project:		
Location:		
Drawing Title:		
GROUND FLOOR PLAN		
DATE: 18 JAN 2018 SCALE: 1:100 (A0)		
DRAWING NO. 32110 SDBWT/AR/A10/003		
DESIGNED BY: CHECKED BY: REVIEWED BY:		
JOB NO. 32110		
REV. NO. 1		





DATE: 18 JAN 2018		SCALE: 1:100	
DRAFTED BY: CKF	CHECKED BY: DFC	DESIGNED BY: WHN	REVIEWED BY:
JOB NO. 32110	DRAWING NO. SDB/WT/AR/ A10/004		REV.NO. —



THE OWNERSHIP OF THE COPYRIGHT IN THIS DRAWING IS RETAINED BY THE ISSUER WHOSE CONSENT MUST BE OBTAINED BEFORE ANY USE OR REPRODUCTION OF THE DRAWING OR ANY PART THEREOF CAN BE MADE.





DATE: 18 JAN 2018		SCALE: 1:100	
DRAFTED BY:	CHECKED BY:	DESIGNED BY:	REVIEWED BY:
JOB NO. 32110	DRAWING NO. SDB/WT/AR/ A10/006		REV. NO. —



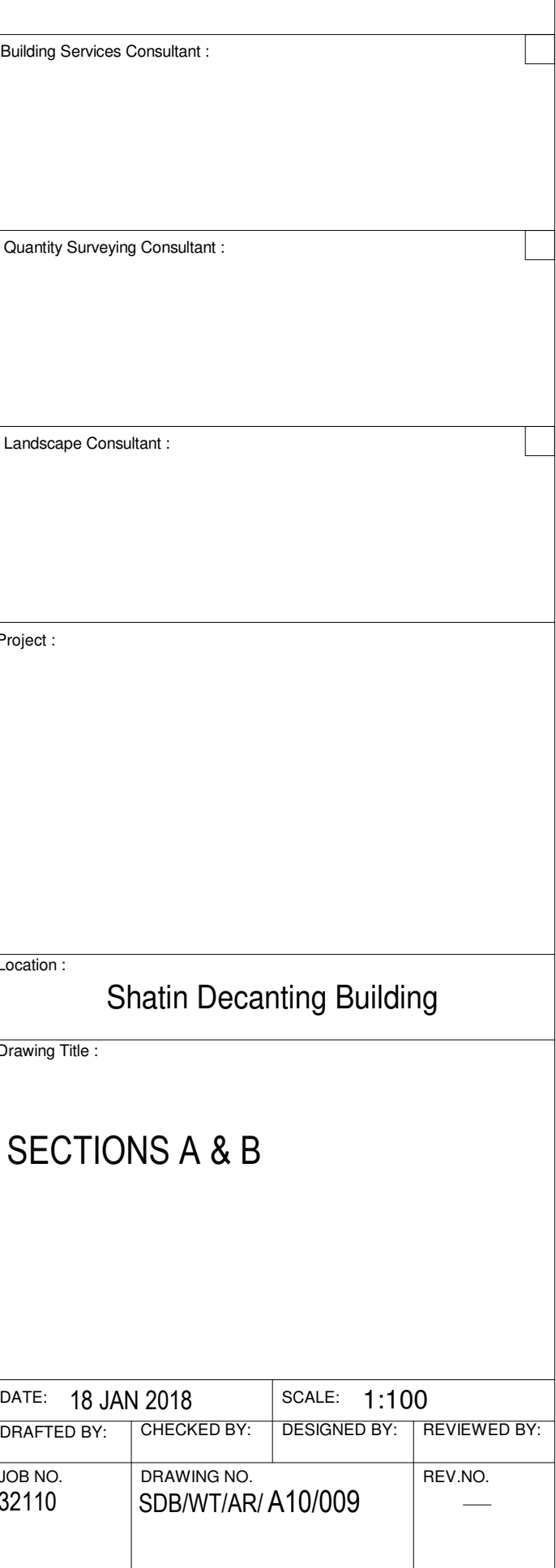
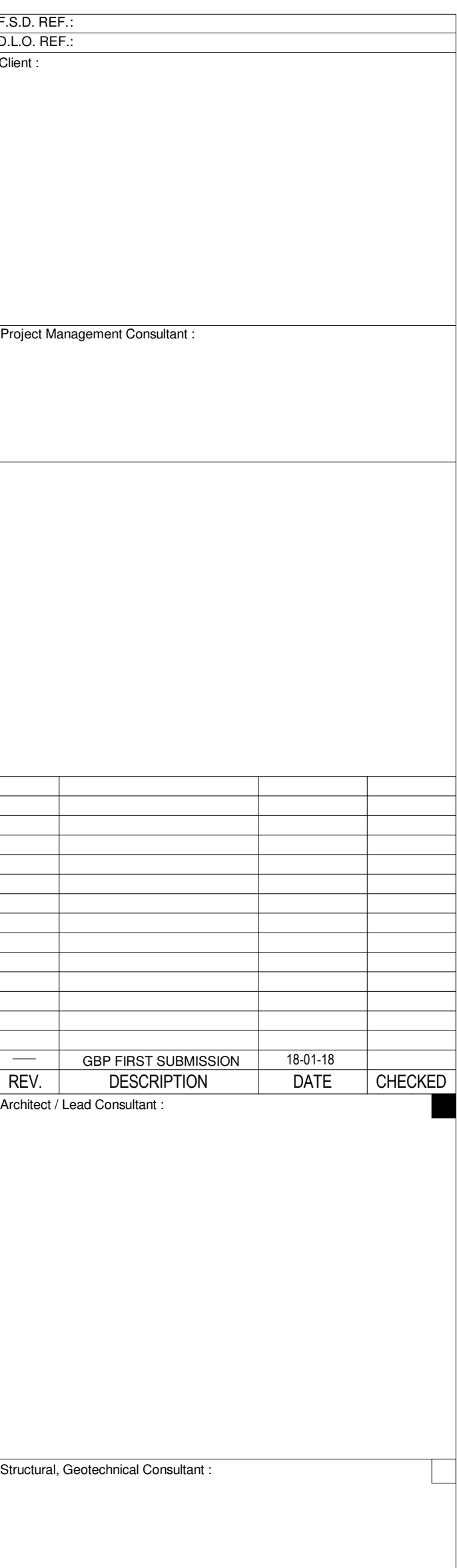
THE OWNERSHIP OF THE COPYRIGHT IN THIS DRAWING IS RETAINED BY THE ISSUER WHOSE CONSENT MUST BE OBTAINED BEFORE ANY USE OR REPRODUCTION OF THE DRAWING OR ANY PART THEREOF CAN BE MADE



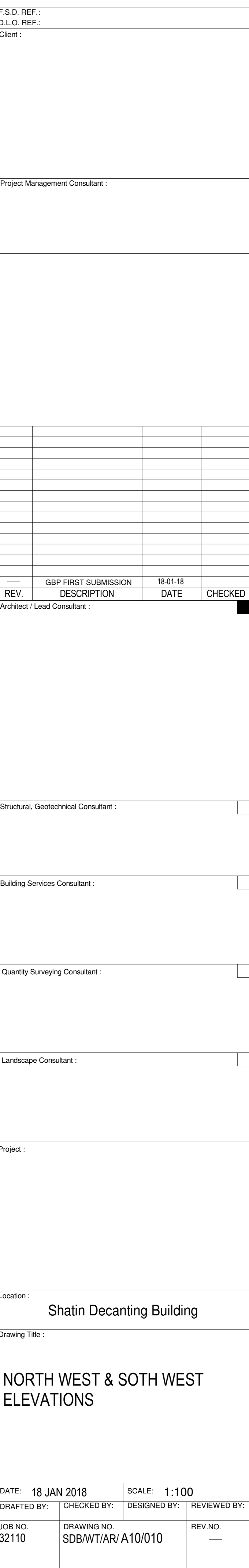


ANY PART THEREOF CAN BE MADE.











2 NORTH EAST ELEVATION



$$\begin{aligned} &= 905.486 + (1497.400 / 2) \\ &= 1654.186 \text{ m}^2 \end{aligned}$$

FLOOR AREA:		
(A)	FLOOR AREA	=2827.474 m <sup>2</sup>
		=2827.474 m <sup>2</sup>
DEDUCT AREA: (NOT LIMIT ON GFA EXEMPTION)		
EXEMPTION		
(1)	CARPARK	=1497.400 m <sup>2</sup>
(2)	LOADING / UNLOADING	=153.930 m <sup>2</sup>
(3)	REFUSE CHAMBER	=14.820 m <sup>2</sup>
(4)	TRANSFORMER ROOM	=57.041 m <sup>2</sup>
(5)	LV SWITCHCH ROOM	=28.324 m <sup>2</sup>
(6)	WATER TANK AND PUMP ROOM	=74.261 m <sup>2</sup>
(7)	ELV	=8.000 m <sup>2</sup>
(8)	WATER METER CABINET FOR POTABLE WATER SUPPLY AND CLEANING WATER SUPPLY	=1.867 m <sup>2</sup>
(9)	CHECK METER CABINET FOR FRESH WATER AND FLUSH WATER SUPPLY	=4.810 m <sup>2</sup>
(10)	TELECOM LEAD-IN ROOM	=3.156 m <sup>2</sup>
(11)	FS TRANSFER PUMP AND TANK ROOM	=66.945 m <sup>2</sup>
(12)	CHECK MEATER CABINET FOR F.S.	=1.803 m <sup>2</sup>
(13)	H.R.	=0.300 m <sup>2</sup>
(14)	H.R.	=0.270 m <sup>2</sup>
(15)	F.S. INLET	=1.481 m <sup>2</sup>
(16)	FS CONTROL VALVE	=2.500 m <sup>2</sup>
(17)	H.R.	=0.270 m <sup>2</sup>
		=1921.988 m <sup>2</sup>

ACTUAL GFA OF SECOND FLOOR :  
=2795.985 - 31.446  
=2764.539 m<sup>2</sup>

FLOOR AREA:			
①	FLOOR AREA	=2795.985	m <sup>2</sup>
DEDUCT AREA: (NOT LIMIT ON GFA EXEMPTION)			
EXEMPTION			
①	REFUSE RM.	= 3.645	m <sup>2</sup>
②	ELV ROOM	= 8.000	m <sup>2</sup>
③	EL ROOM	= 6.700	m <sup>2</sup>
④	TO ⑥ H.R.		
	0.270 + 0.475 + 0.270	= 1.015	m <sup>2</sup>
⑦	TO ⑮ P.D.		
	5.603 + 1.875 + 1.50 + 0.518 + 0.518 + 0.518 + 0.518 + 0.518 + 0.518	= 12.086	m <sup>2</sup>
		= 31.446	m <sup>2</sup>

ACTUAL GFA OF FIRST FLOOR:  
=2795.985-95.344  
=2700.641 m<sup>2</sup>

FLOOR AREA:			
①	FLOOR AREA	=2795.985	m <sup>2</sup>
		=2795.985	m <sup>2</sup>
DEDUCT AREA: (NOT LIMIT ON GFA EXEMPTION)			
EXEMPTION			
①	REFUSE RM.	= 3.645	m <sup>2</sup>
②	TBE ROOM	= 47.597	m <sup>2</sup>
③	ELV ROOM	= 8.000	m <sup>2</sup>
④	EL ROOM	= 6.700	m <sup>2</sup>
⑤	PABX ROOM	=16.446	m <sup>2</sup>
⑥	TO ⑧ H.R.		
	0.270 + 0.300 + 0.300	= 0.870	m <sup>2</sup>
⑨	TO ⑩ P.D.		
	5.603 + 1.875 + 1.50 + 0.518 + 0.518 + 0.518 + 0.518 + 0.518 + 0.518	= 12.086	m <sup>2</sup>
		= 95.344	m <sup>2</sup>

FLOOR	G.F.A. (m <sup>2</sup> )
THIRD FLOOR	2764.714
SECOND FLOOR	2764.539
FIRST FLOOR	2700.641
GROUND FLOOR	1654.186
TOTAL:	9884.080 (m <sup>2</sup> )

ACTUAL GFA OF THIRD FLOOR :  
=2795.985 - 31.271  
=2764.714 m<sup>2</sup>

FLOOR AREA:			
①	FLOOR AREA	=2795.985	m <sup>2</sup>
DEDUCT AREA: (NOT LIMIT ON GFA EXEMPTION)			
EXEMPTION			
①	REFUSE RM.	= 3.645	m <sup>2</sup>
②	ELV ROOM	= 8.000	m <sup>2</sup>
③	EL ROOM	= 6.700	m <sup>2</sup>
④	TO ⑥ H.R.		
	0.270 + 0.300 + 0.270	= 0.840	m <sup>2</sup>
⑦	TO ⑮ P.D.		
	5.603+ 1.875 + 1.50 + 0.518 + 0.518 + 0.518+ 0.518 + 0.518 + 0.518	= 12.086	m <sup>2</sup>
		= 31.271	m <sup>2</sup>

[illegible]





TOTAL UFA CALCULATION:

GROUND FLOOR	= 464.220 m <sup>2</sup>
FIRST FLOOR	= 2131.373 m <sup>2</sup>
SECOND FLOOR	= 2208.529 m <sup>2</sup>
THIRD FLOOR	= 2164.825 m <sup>2</sup>
<hr/>	
TOTAL UFA	= 6968.947 m <sup>2</sup>

Area Schedule (UFA AND UFS)1/F		
Number	Name	Area
1	DEMONSTRATION/ PRACTICAL ROOM	201.063 m <sup>2</sup>
2	SLUICE RM	8.940 m <sup>2</sup>
3	CENTRAL NURSING DIVISION OPEN PLAN	19.110 m <sup>2</sup>
4	LECTURE THEATRE	243.277 m <sup>2</sup>
5	(FOR B1) AV EQ. RM.	10.732 m <sup>2</sup>
6	LOCKER RM	21.995 m <sup>2</sup>
7	TM/EQ	7.356 m <sup>2</sup>
8	CM & FUR	15.968 m <sup>2</sup>
9	SKILL LAB/SIM CENTRE W/ CONTROL ROOM	127.808 m <sup>2</sup>
10	LEARNING RESOURCE CENTER	33.618 m <sup>2</sup>
11	SCHOOL OF MIDWIFERY (OPEN PLAN)	136.127 m <sup>2</sup>
12	TEACHING RESOURCE CENTER	22.680 m <sup>2</sup>
13	CON. RE.	9.141 m <sup>2</sup>
14	LECTURE ROOM/ CLASS ROOM	97.607 m <sup>2</sup>
15	PERSONNEL RECORDS STORE	177.949 m <sup>2</sup>
16	(FOR D3) MEETING RM.	15.086 m <sup>2</sup>
17	(FOR D3) MEETING RM.	15.086 m <sup>2</sup>
18	WELFARE EQ STORE	32.520 m <sup>2</sup>
19	(FOR D3) MEETING RM.	15.980 m <sup>2</sup>
20	STORE	19.870 m <sup>2</sup>
21	LIBRARY (OPEN PLAN)	66.390 m <sup>2</sup>
22	CLUSTER GM	9.874 m <sup>2</sup>
23	PER. SEC.	6.275 m <sup>2</sup>
24	HUMAN RESOURCES DIVISION	352.767 m <sup>2</sup>
25	CON. RECORD STORE	23.197 m <sup>2</sup>
26	CLINICAL SKILLS EQUIOMENT STORE	34.791 m <sup>2</sup>
27	(FOR D3) MEETING RM.	22.365 m <sup>2</sup>
28	(FOR B2)MEETING RM.	30.639 m <sup>2</sup>
29	(FOR B2) MEETING RM.	28.791 m <sup>2</sup>
30	LECTURE ROOM/ CLASS ROOM	98.326 m <sup>2</sup>
31	CONFIDENTIAL RECORDS STORE	168.325 m <sup>2</sup>
32	RECEPTION & WAITING AREA	57.720 m <sup>2</sup>
ADD	TOTAL UFA:	2131.373 m <sup>2</sup>
33	CORRIDOR	218.846 m <sup>2</sup>
	TOTAL UFS:	2350.219 m <sup>2</sup>



TOTAL UFS CALCULATION:

GROUND FLOOR	= 578.811 m <sup>2</sup>
FIRST FLOOR	= 2350.219 m <sup>2</sup>
SECOND FLOOR	= 2417.882 m <sup>2</sup>
THIRD FLOOR	= 2405.468 m <sup>2</sup>
<hr/>	
TOTAL UFS	= 7752.380 m <sup>2</sup>

Area Schedule (UFA AND UFS)3/F		
Number	Room Name	Area
1	RELAXATION CORNER	30.816 m <sup>2</sup>
2	CIPSC (OPEN PLAN)	71.471 m <sup>2</sup>
3	INTERVIEW	9.236 m <sup>2</sup>
4	INTERVIEW	10.495 m <sup>2</sup>
5	MEETING RM (COM)	6.382 m <sup>2</sup>
6	MEETING RM (COM)	6.897 m <sup>2</sup>
7	STORE	21.525 m <sup>2</sup>
8	GENERAL STORE	29.602 m <sup>2</sup>
9	OMS (OPEN PLAN)	15.208 m <sup>2</sup>
10	INTERNAL AUDIT OFFICE	16.755 m <sup>2</sup>
11	MEDICAL PHYSICAL UNIT STORE	29.820 m <sup>2</sup>
12	LECTURE ROOM (COM)	113.970 m <sup>2</sup>
13	CLUSTER CO. (P&MM)	8.165 m <sup>2</sup>
14	GENERAL OFFICE	10.765 m <sup>2</sup>
15	PROCUREMENT AND MATERIAL MANAGEMENT OFFICE	416.754 m <sup>2</sup>
16	LOCKER/ CHANGING	4.418 m <sup>2</sup>
17	WORK RM.	10.901 m <sup>2</sup>
18	FINANCE DEPARTMENT (OPEN PLAN)	518.954 m <sup>2</sup>
19	CLUSTER GM	8.830 m <sup>2</sup>
20	EYE BANK	15.147 m <sup>2</sup>
21	CONFIDENTIAL RECORDS STORE	179.880 m <sup>2</sup>
22	(FOR D1) MEETING RM.	16.335 m <sup>2</sup>
23	MEETING RM (COM)	7.924 m <sup>2</sup>
24	MEETING RM (COM)	7.459 m <sup>2</sup>
25	FURNITURE STORE	109.914 m <sup>2</sup>
26	LINEN STORE	73.342 m <sup>2</sup>
27	(FOR A5) MEETING RM.	32.808 m <sup>2</sup>
28	PPE STORE	381.052 m <sup>2</sup>
ADD	TOTAL UFA:	2164.825 m <sup>2</sup>
29	CORRIDOR	240.643 m <sup>2</sup>
	TOTAL UFS:	2405.468 m <sup>2</sup>

[illegible]



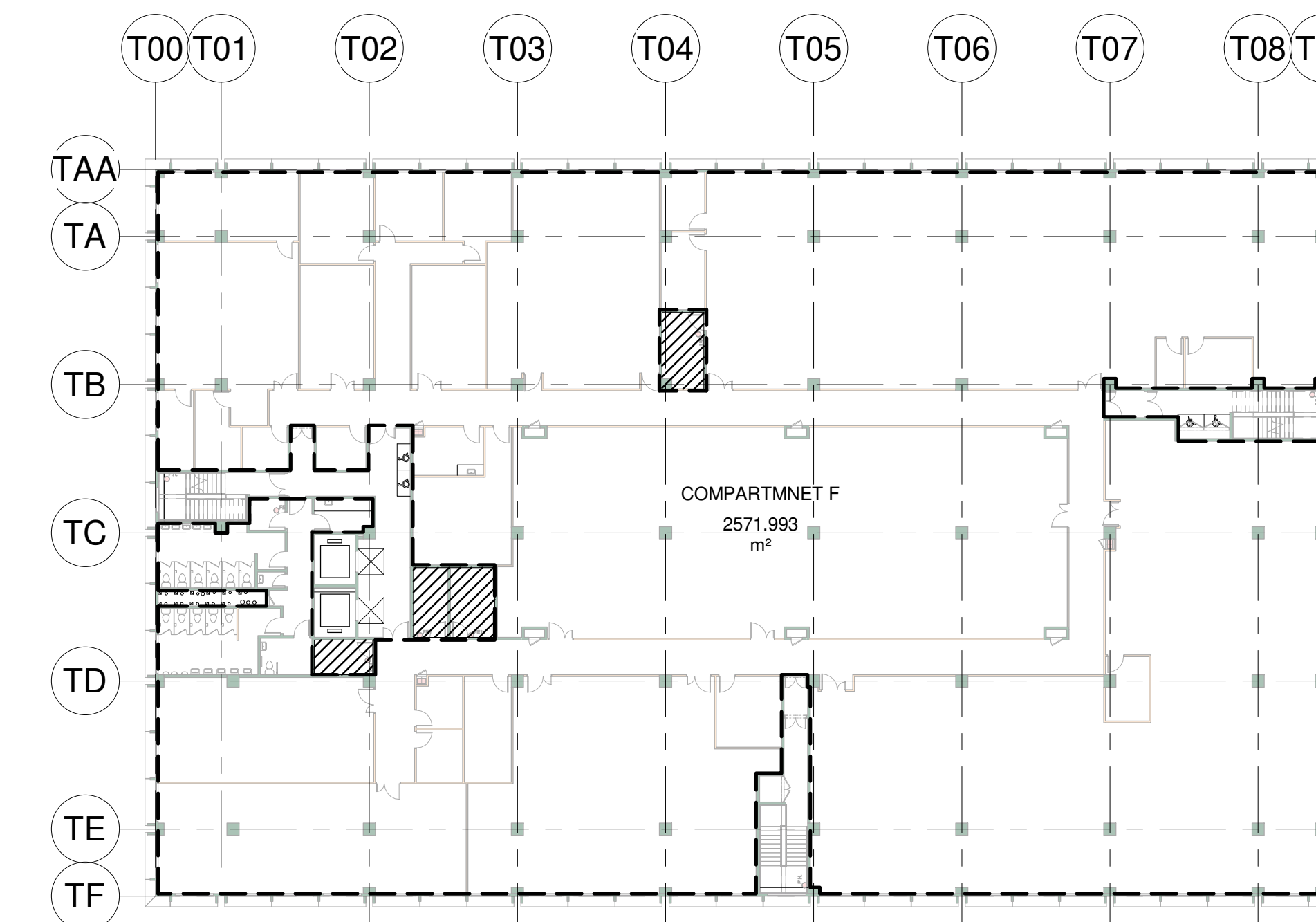
COMPARTMENT A	AREA = 1510.41 M <sup>2</sup>
COMPARTMENT B	AREA = 732.709 M <sup>2</sup>
COMPARTMENT C	AREA = 171.279 M <sup>2</sup>



COMPARTMENT D                      AREA =2510.348 M<sup>2</sup>



COMPARTMENT E                      AREA = 2571.317 M<sup>2</sup>



COMPARTMENT F AREA = 2571.993 M<sup>2</sup>

JOB NO. 32110	DRAWING NO. SDB/WT/AR/ A10/014	REV.NO. —
------------------	-----------------------------------	--------------

THE OWNERSHIP OF THE COPYRIGHT IN THIS DRAWING IS RETAINED BY THE ISSUER WHOSE CONSENT MUST BE OBTAINED BEFORE ANY USE OR REPRODUCTION OF THE DRAWING OR ANY PART THEREOF CAN BE MADE.



PROVISIONS OF EXIT DOORS AND EXIT ROUTE FROM ROOM OR STOREY

SCHEDULE OF EXIT DOORS & EXIT ROUTES

FLOOR	ROOM NAME	USE	U.F.A. (s.m.)	s.m. PER PERSON	CAPACITY (MAX. OF ROOM OR STOREY )	MIN. NO. OF EXIT DOORS & EXIT ROUTES		MIN. TOTAL EXIT		WIDTH		MIN. WIDTH OF EACH				
								EXIT DOORS		EXIT ROUTES		EXIT DOORS		EXIT ROUTES		
						REQ'D	PRO'D	REQ'D	PRO'D	REQ'D	PRO'D	REQ'D	PRO'D	REQ'D	PRO'D	
3/F	RELAXATION CORNER	OFFICE	30.816	9	4	1	1	750	850	-	-	750	850	-	-	
	CIPSC (OPEN PLAN)	OFFICE	71.471	9	8	1	1	750	1350	-	-	750	1350	-	-	
	INTERVIEW	OFFICE	9.236	9	2	1	1	750	850	-	-	750	850	-	-	
	INTERVIEW	OFFICE	10.495	9	2	1	1	750	850	-	-	750	850	-	-	
	MEETING RM (COM)	OFFICE	6.382	10	1	1	1	750	850	-	-	750	850	-	-	
	MEETING RM (COM)	OFFICE	6.897	10	1	1	1	750	850	-	-	750	850	-	-	
	STORE	STORE	21.525	30	1	1	1	750	850	-	-	750	850	-	-	
	GENERAL STORE	STORE	29.602	30	1	1	1	750	1350	-	-	750	1350	-	-	
	OMS (OPEN PLAN)	OFFICE	15.208	9	2	1	1	750	850	-	-	750	850	-	-	
	INTERNAL AUDIT OFFICE	OFFICE	16.755	9	2	1	1	750	850	-	-	750	850	-	-	
	MEDICAL PHYSICAL UNIT STORE	STORE	29.820	30	1	1	1	750	1350	-	-	750	1350	-	-	
	LECTURE ROOM (COM)	LECTURE ROOM	113.970	-	90	2	2	1750	1800	-	-	850	900	-	-	
	CLUSTER CO. (P&MM)	OFFICE	8.165	9	1	1	1	750	850	-	-	750	850	-	-	
	GENERAL OFFICE	OFFICE	10.765	9	2	1	1	750	850	-	-	750	850	-	-	
	PROCUREMENT AND MATERIAL MANAGEMENT OFFICE	OFFICE	416.754	9	47	2	2	1750	2700	-	-	850	1350	-	-	
	LOCKER/ CHANGING	OFFICE	4.418	9	1	1	1	750	850	-	-	750	850	-	-	
	WORK RM.	OFFICE	10.901	9	2	1	1	750	850	-	-	750	850	-	-	
	FINANCE DEPARTMENT (OPEN PLAN)	OFFICE	518.954	9	58	2	2	1750	2700	-	-	850	1350	-	-	
	CLUSTER GM	OFFICE	8.830	9	1	1	1	750	850	-	-	750	850	-	-	
	EYE BANK	OFFICE	15.147	9	2	1	1	750	850	-	-	750	850	-	-	
	CONFIDENTIAL RECORDS STORE	STORE	179.880	30	6	1	2	750	2700	-	-	750	1350	-	-	
	(FOR D1) MEETING RM.	OFFICE	16.335	10	2	1	1	750	850	-	-	750	850	-	-	
	MEETING RM (COM)	OFFICE	7.924	10	1	1	1	750	850	-	-	750	850	-	-	
	MEETING RM (COM)	OFFICE	7.459	10	1	1	1	750	850	-	-	750	850	-	-	
	FURNITURE STORE	STORE	109.914	30	4	1	1	750	1350	-	-	750	1350	-	-	
	LINEN STORE	STORE	73.342	30	3	1	1	750	1350	-	-	750	1350	-	-	
	(FOR A5) MEETING RM.	OFFICE	32.808	10	4	1	1	750	850	-	-	750	850	-	-	
	PPE STORE	STORE	381.052	30	13	1	3	750	4050	-	-	750	1350	-	-	
					TOTAL	263	2	3	3000	4100	3000	3750	1050	1200	1050	1250
2/F	IT TRAINING	OFFICE	45.514	9	6	1	1	750	850	-	-	750	850	-	-	
	IT D (OPEN PLAN)	OFFICE	62.618	9	7	1	1	750	1350	-	-	750	1350	-	-	
	IT EQ STORE ROOM	STORE	17.190	30	1	1	1	750	1350	-	-	750	1350	-	-	
	STORE	STORE	9.055	30	1	1	1	750	1350	-	-	750	1350	-	-	
	MEETING RM. (COM)	OFFICE	6.836	10	1	1	1	750	850	-	-	750	850	-	-	
	MEETING RM. (COM)	OFFICE	7.350	10	1	1	1	750	850	-	-	750	850	-	-	
	MEDICAL RECORD STORAGE AND FILING AREA (OPEN PLAN)	STORE	135.450	30	5	1	1	750	1350	-	-	750	1350	-	-	
	CONSULTANT (COS)	OFFICE	21.451	9	3	1	1	750	850	-	-	750	850	-	-	
	SENIOR E&M OFFICER ROOM	OFFICE	9.477	9	2	1	1	750	850	-	-	750	850	-	-	
	HOSPITAL PLANNING AND FACILITY MANAGEMENT DIVISION (OPEN PLAN)	OFFICE	491.191	9	55	2	2	1750	2700	-	-	850	1350	-	-	
	CON. FILE STORE	STORE	7.854	30	1	1	1	750	850	-	-	750	850	-	-	
	GENERAL STORE	STORE	14.531	30	1	1	1	750	850	-	-	750	850	-	-	
	STORE FOR FOREMAN OFFICE	STORE	78.278	30	3	1	1	750	1350	-	-	750	1350	-	-	
	STORE FOR UNIFORM	STORE	241.774	30	9	1	1	750	1350	-	-	750	1350	-	-	
	STORE FOR LINEN	STORE	207.720	30	7	1	1	750	1350	-	-	750	1350	-	-	
	MEDICAL RECORD STORAGE AND FILING AREA (OPEN PLAN)	STORE	427.260	30	15	1	2	750	2700	-	-	750	1350	-	-	
	MEETING RM (FOR A2)	OFFICE	44.250	10	5	1	1	750	850	-	-	750	850	-	-	
	MEDICAL RECORD STORAGE AND FILING AREA (OPEN PLAN)	STORE	381.730	30	13	1	3	750	4050	-	-	750	1350	-	-	
					TOTAL	136	2	3	1750	4100	2100	3750	850	1200	1050	1250
	1/F	DEMONSTRATION/ PRACTICAL ROOM	OFFICE	201.063	9	23	1	1								
SLUICE RM		OFFICE	8.940	9	1	1	1									
CENTRAL CONTROL & MONITORING SYSTEM RM		OFFICE	26.390	9	3											
LOCKER		OFFICE	4.781	9	1											
STORE 1		STORE	166.429	30	6											
DIETETICS STORE		STORE	18.225	30	1											
MAINTENANCE WORKSHOP		OFFICE	21.365	9	3											
STORE RM		STORE	27.680	30	1											
CLINICAL SKILLS EQUIOMENT STORE		STORE	26.115	30	1											
IT SERVER ROOM		OFFICE	28.900	9	4											
CTC H.DESK		OFFICE	6.041	9	1											
STORE		STORE	18.963	30	1											
CTC CENTRE		OFFICE	19.875	9	3											
CTC		OFFICE	10.495	9	2											
CTC		OFFICE	10.495	9	2											
CTC		OFFICE	10.495	9	2											
CTC		OFFICE	10.495	9	2											
CTC		OFFICE	10.495	9	2											
CTC		OFFICE	10.495	9	2											
CTC		OFFICE	10.495	9	2											
CTC		OFFICE	10.495	9	2											
CTC		OFFICE	10.495	9	2											
CTC		OFFICE	10.495	9	2											
CTC		OFFICE	10.495	9	2											
CTC		OFFICE	10.495	9	2											
CTC		OFFICE	10.495	9	2											
CTC		OFFICE	10.495	9	2											
CTC		OFFICE	10.495	9	2											
CTC		OFFICE	10.495	9	2											
CTC		OFFICE	10.495	9	2											
CTC		OFFICE	10.495	9	2											
CTC		OFFICE	10.495	9	2											
CTC		OFFICE	10.495	9	2											
CTC	OFFICE	10.495	9	2												
CTC	OFFICE	10.495	9	2												
CTC	OFFICE	10.495	9	2												
CTC	OFFICE	10.495	9	2												
CTC	OFFICE	10.495	9	2												
CTC	OFFICE	10.495	9	2												
CTC	OFFICE	10.495	9	2												
CTC	OFFICE	10.495	9	2												
CTC	OFFICE	10.495	9	2												
CTC	OFFICE	10.495	9	2												
CTC	OFFICE	10.495	9	2												
CTC	OFFICE	10.495	9	2												
CTC	OFFICE	10.495	9	2												
CTC	OFFICE	10.495	9	2												
CTC	OFFICE	10.495	9	2												
CTC	OFFICE	10.495	9	2												
CTC	OFFICE	10.495	9	2												
CTC	OFF															



