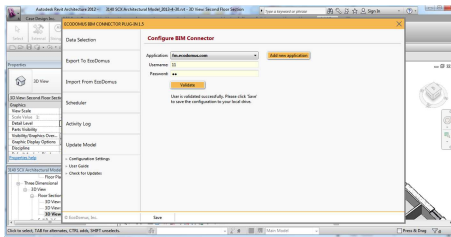


Step 1: Preparing ARCH Revit Model for Synchronization with EcoDomus PM

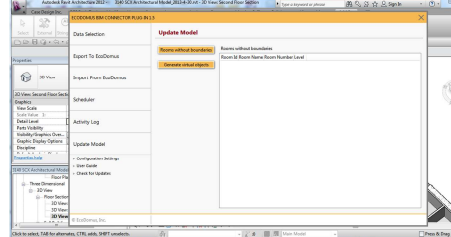
1



Revit Arch EcoDomus BIM Connector: Configuration Settings

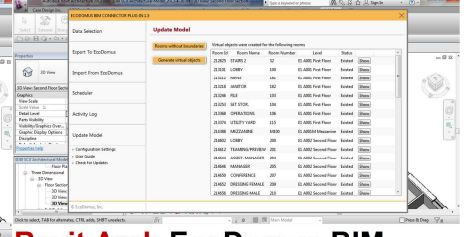
Login and Save

2



Revit Arch Update Model / Rooms without Boundaries / Fix Unbounded Rooms / Run Report and fix until Rooms are not shown here. Refer to Revit Warnings.

3



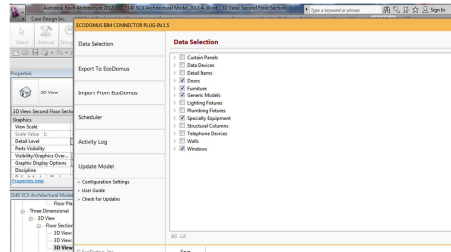
Revit Arch EcoDomus BIM Connector: Update Model / Generate Virtual Objects / Virtual Transparent Floors are created and lifted 1/4 " above modeled floor. Save the Revit Model.

4



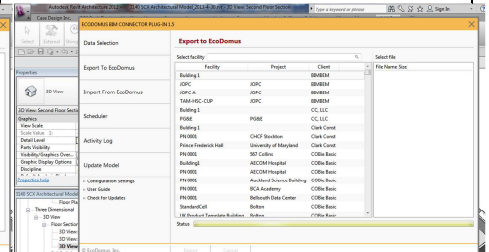
Revit Arch : Update Model / Generate Virtual Objects / Check to see if Virtual Floors, Stairs & Elevators Cut through. If not, Modify Virtual Floor Boundary.

5



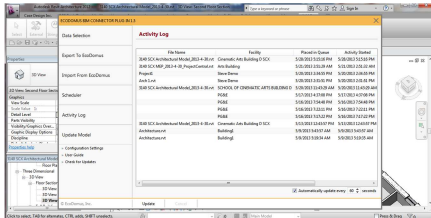
Revit Arch : Data Selection / Select Items In Revit Arch that will not be duplicated in Revit MEP / Save.

6



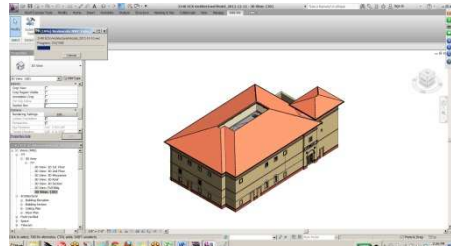
Revit Arch EcoDomus BIM Connector / Export to EcoDomus
Note: this step occurs ONLY after the Navis nwd Model is Uploaded to the BIM server.

7



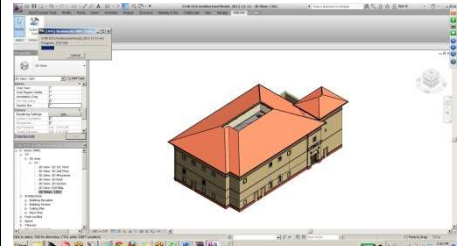
Revit Arch: Activity Log / check Auto Update for large models to track progress. Note: this step occurs ONLY after the Navis nwd Model is Uploaded to the BIM server.

8



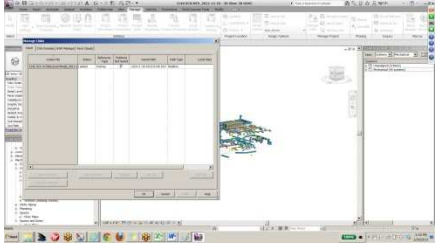
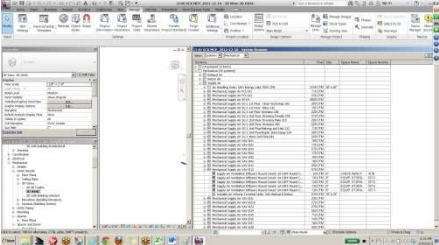
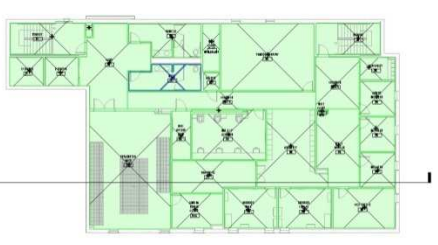
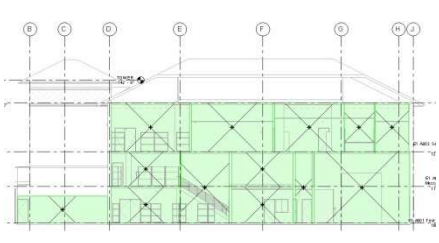
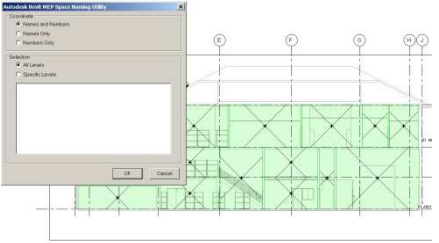
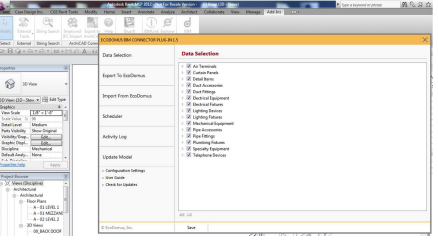
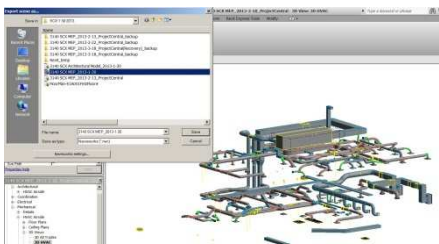
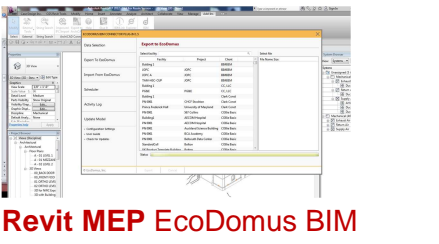
Revit Arch Set Detail Level to Coarse and Visual Style to Shaded in the Default 3D Home View

9



Revit Arch: Unbind all Ceilings / VG OFF MEP, Lines, DWGS and any elements that are not needed in the Navis model. Add-Ins External Tools / Export to Navisworks .nwc (use shared coordinates in NavisWorks Settings)

Step 2: Preparing MEP Revit Model for Synchronization with EcoDomus PM

<p>1</p>  <p>Revit MEP Link In Revit Arch File Manage > Links> Link Architectural File in. Use Origin to Origin</p>	<p>2</p>  <p>Revit MEP Check Spaces System Browser> Check for Space Names showing up in the System Browser</p>	<p>3</p>  <p>Revit MEP Fix Spaces Ensure that Revit MEP Space Entities are fully inserted in the model on all floors in Plan Views. Use Inquiry to check for Duplicates and errors.</p>
<p>4</p>  <p>Revit MEP Fix Spaces Check Revit MEP Space Entities in Section View. Ensure that spaces extend from Floor Slab to the Floor Slab above. MEP must be enclosed by spaces, nudge if needed</p>	<p>5</p>  <p>Revit MEP Fix Space Names/Nums Use the Autodesk Revit Space Naming Utility to synchronize Revit Arch Room Names/Numbers to Revit MEP Space Names/Numbers</p>	<p>6</p>  <p>Revit MEP EcoDomus BIM Connector - Data Selection. Check all elements¹ to be tracked. EcoDomus parameters are inserted as a shared parameter.</p>
<p>7</p>  <p>Revit MEP Export to NavisWorks .nwc</p>	<p>8</p>  <p>Revit MEP EcoDomus BIM Connector - Export to EcoDomus Select Facility, select File, Export</p>	<p>9</p>

¹ Revit MEP FM Item Selection: Check Mechanical Equipment, Electrical Equipment, Air Terminals, Electrical Fixtures, Telephone Devices, Lighting Fixtures, Lighting Devices, Duct Accessories, Plumbing Fixtures, Pipe Accessories and Specialty Equipment

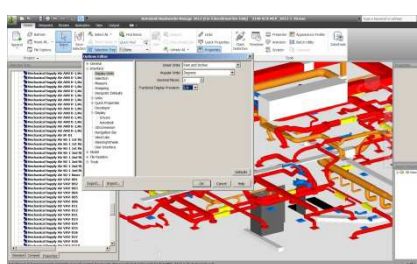
Step 3: Preparing the NavisWorks Models for Upload to EcoDomus

1



NavisWorks Open MEP NWC

2

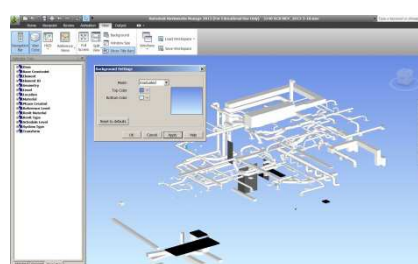


NavisWorks Change Display Units

Options> Interface> Display Units>

Linear Units: Feet and Inches,
Angular Units: Degrees, Decimal
Places: 2, Fractional Display
Precision: 1/4"

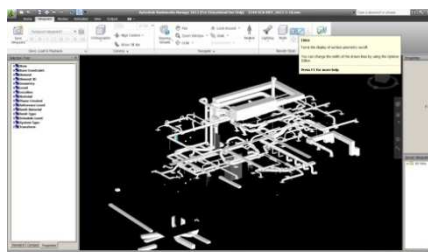
3



NavisWorks Change Background Properties to "Graduated"

View > Background > Graduated
Hit "Ok"

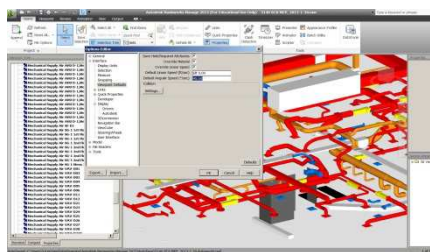
4



NavisWorks Turn off all Lines

View> Click the "Lines" Button

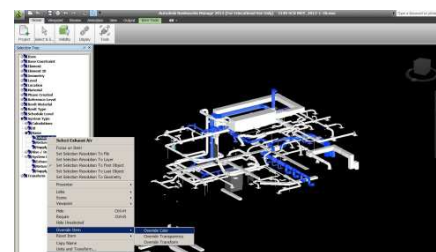
5



NavisWorks Viewpoint Default

Options Options> Interface>
Viewpoint Defaults> Check all 3
boxes, change Default Linear
Speed to 6ft/sec

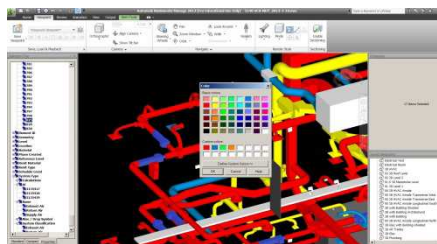
6



NavisWorks Coloring Systems

MEP.nwc Color MEP systems
individually, isolate via the
Selection Tree> System Type>
either by Id, Name or System
Classification

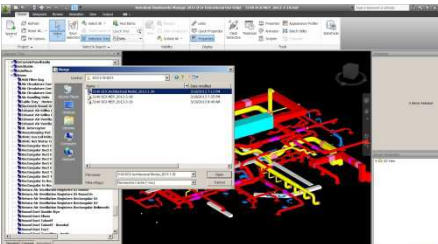
7



NavisWorks Coloring VAV Boxes, Dampers, Filters Differently

Select an shade close to each
System's color

8



NavisWorks Merge Arch.nwc file

Merge the Arch NavisWorks NWC
files into the current session

9

Make DWG's with only Room tags
on. Merge into Navis Model and
lift 1/4 inch above floor levels for
Room ID. When creating views,
using the Room Schedule can aid
as a checkoff guide.

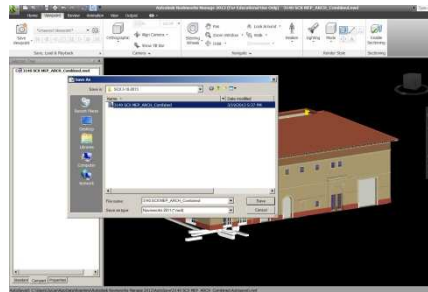
10



NavisWorks Make Viewpoints for each room, and above their ceilings

Name views according to official USC Room Names and Numbers

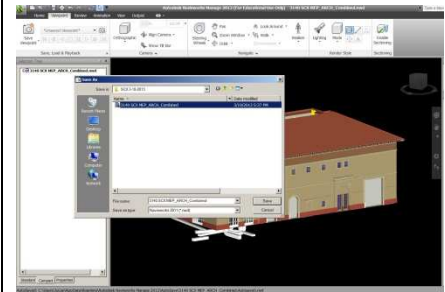
11



NavisWorks Save to .NWD

Publish merged Revit Arch and MEP .nwc cache files into .nwd

12



NavisWorks Save to .NWF

Save merged Revit Arch and MEP .nwc cache files into .nwf

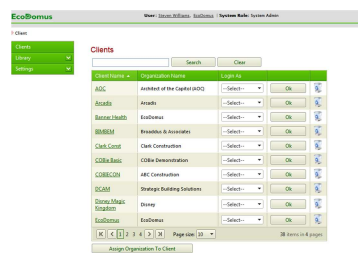
Step 4: Uploading the NavisWorks Model to EcoDomus

1



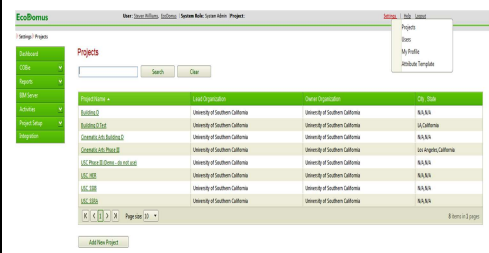
Log In to EcoDomus PM

2



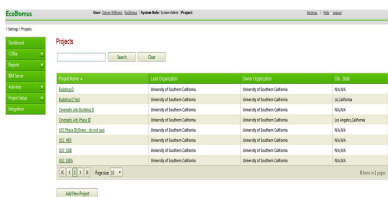
Select USC Client / Select OA

3



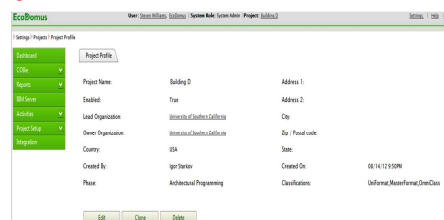
Select Settings/Projects

4



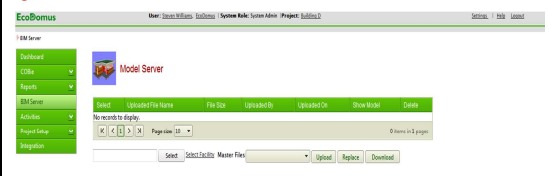
Search for your Project if it's not visible and Select.

5



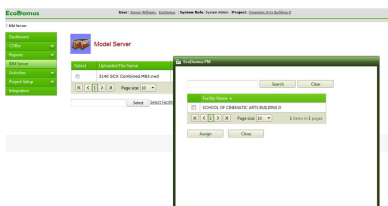
Select BIM Server

6



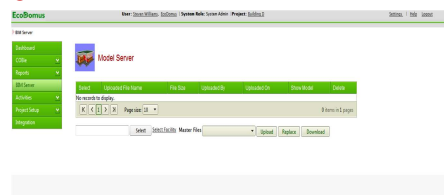
Select and open the NWD from your HD

7



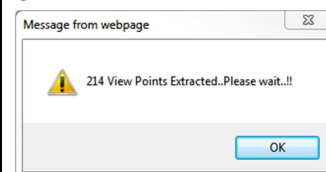
Select Facility and Assign

8



Upload NWD

9



Wait till View Points are Extracted/Select OK (Don't use parenthesis or apostrophes in ViewsNames.)